
INFECTIOUS DISEASES WEEKLY REPORT

TOKYO iDWR

Tokyo Metropolitan Infectious Disease Surveillance Center

11 July 2024 / Number 27
(7/1 ~ 7/7)

Surveillance System in Tokyo, Japan

The infectious diseases which all physicians must report
All physicians must report to health centers the incidence of the diseases which are shown at page one. Health centers electronically report the individual cases to Tokyo Metropolitan Infectious Disease Surveillance Center.

The infectious diseases required to be reported by the sentinels
The numbers of patients who visit the sentinel clinics or hospitals during a week are reported to health centers in Tokyo. And they electronically report the numbers to Tokyo Metropolitan Infectious Disease Surveillance Center. We have about 500 sentinel clinics and hospitals in Tokyo.

Tokyo Metropolitan Institute of Public Health

TEL:81-3-3363-3213 FAX:81-3-5332-7365

e-mail:tmiph@section.metro.tokyo.jp

URL:idsc.tmiph.metro.tokyo.lg.jp/

Number of patients with the diseases which all physicians must report

Category	Diseases	Tokyo				
		24th	25th	26th	27th	Cum 2024
I	Ebola hemorrhagic fever					
	Crimean-Congo hemorrhagic fever					
	Smallpox					
	South American hemorrhagic fever					
	Plague					
	Marburg disease					
	Lassa fever					
II	Acute poliomyelitis					
	Tuberculosis	50	51	39	41	1,073
	Diphtheria					
	Severe Acute Respiratory Syndrome(SARS)					
	Middle East Respiratory Syndrome (MERS)					
	Avian influenza H5N1					
Avian influenza H7N9						
III	Cholera					2
	Shigellosis			1		4
	Enterohemorrhagic Escherichia coli infection	9	10	9	14	122
	Typhoid fever				1	3
	Paratyphoid fever					2
IV	Hepatitis E	4	3	5	3	76
	West Nile fever					
	Hepatitis A		1			13
	Echinococcosis					
	Mpox					12
	Yellow fever					
	Psittacosis					
	Omsk hemorrhagic fever					
	Relapsing fever					
	Kyasanur forest disease					
	Q fever					
	Rabies					
	Coccidioidomycosis					1
	Zika virus infection					
	Severe Fever with Thrombocytopenia Syndrome					
	Hemorrhagic fever with renal syndrome					
	Western equine encephalitis					
	Tick-borne encephalitis					
	Anthrax					
	Chikungunya fever					
	Scrub typhus(Tsutsugamushi disease)					
	Dengue fever		1	1	2	31
	Eastern equine encephalitis					
	Avian influenza (excluding H5N1 and H7N9)					
	Nipah virus infection					
	Japanese spotted fever					
	Japanese encephalitis					
	Hantavirus pulmonary syndrome					
	Herpes B virus infection					
	Glanders					
	Brucellosis					
	Venezuelan equine encephalitis					
	Hendra virus infection					
Epidemic typhus						
Botulism						
Malaria	1		1		6	
Tularemia						
Lyme disease						
Lyssavirus infection(excluding rabies)						
Rift valley fever						
Melioidosis						
Legionellosis	4	2	4	6	74	
Leptospirosis					1	
Rocky mountain spotted fever						

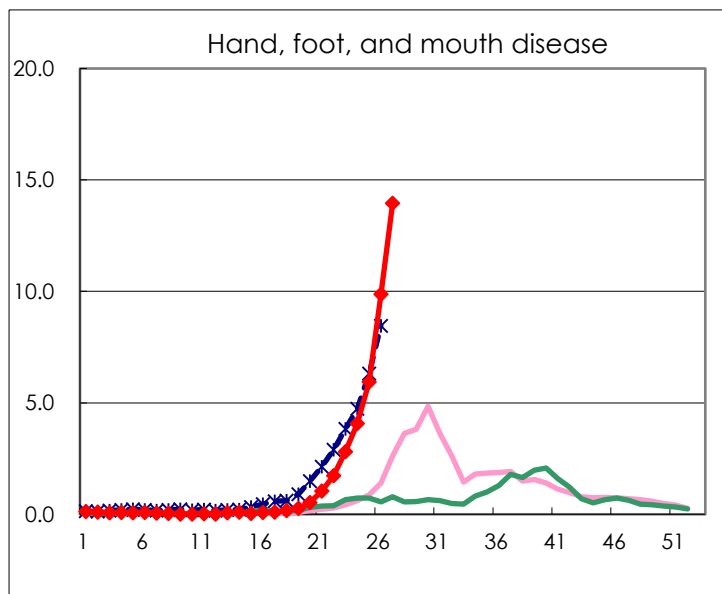
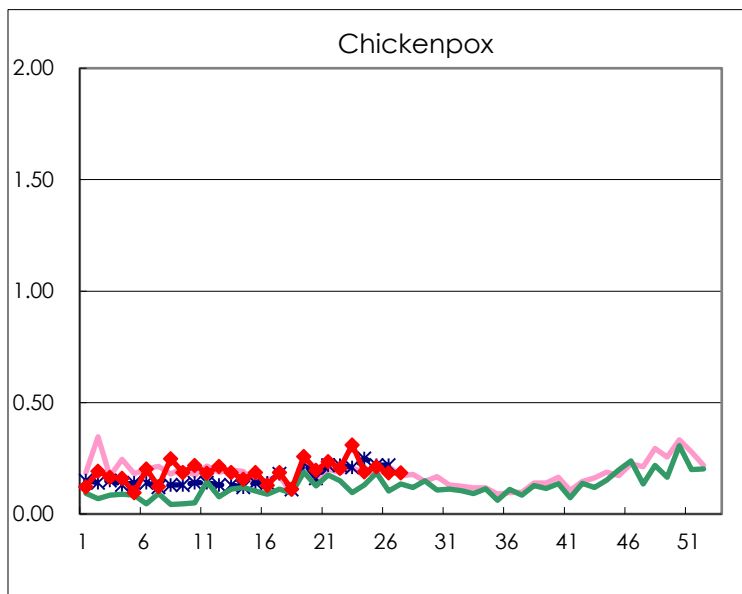
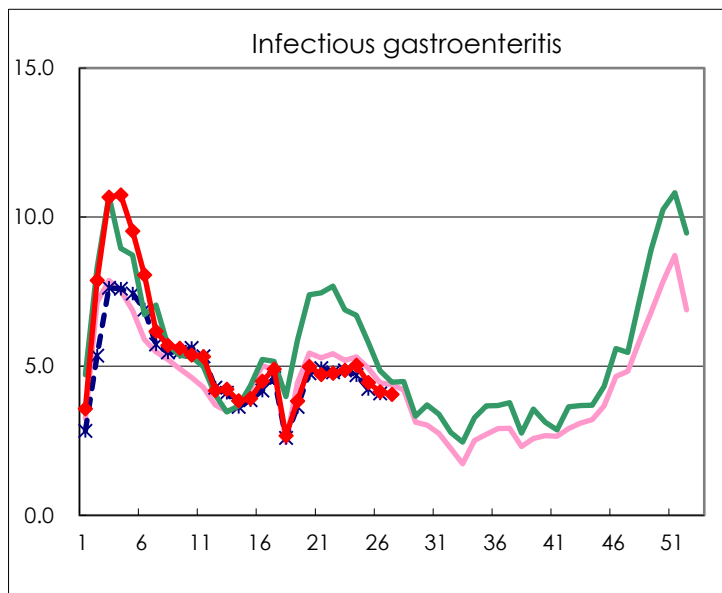
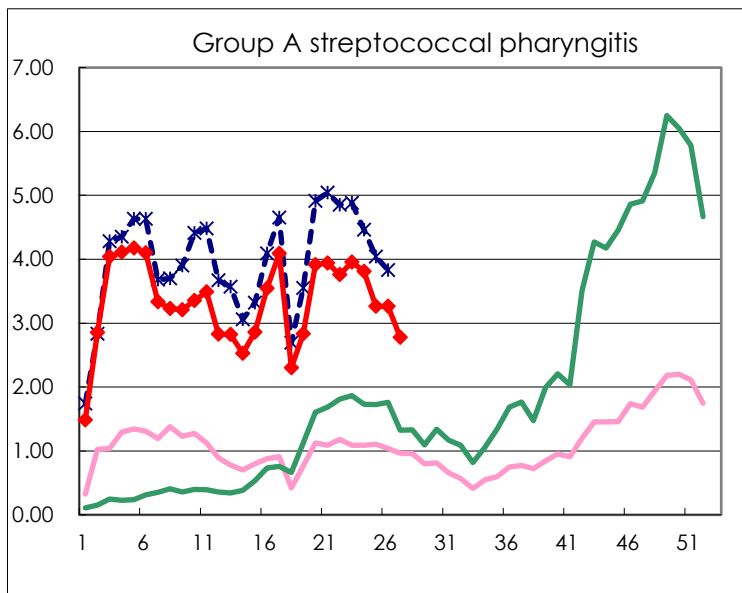
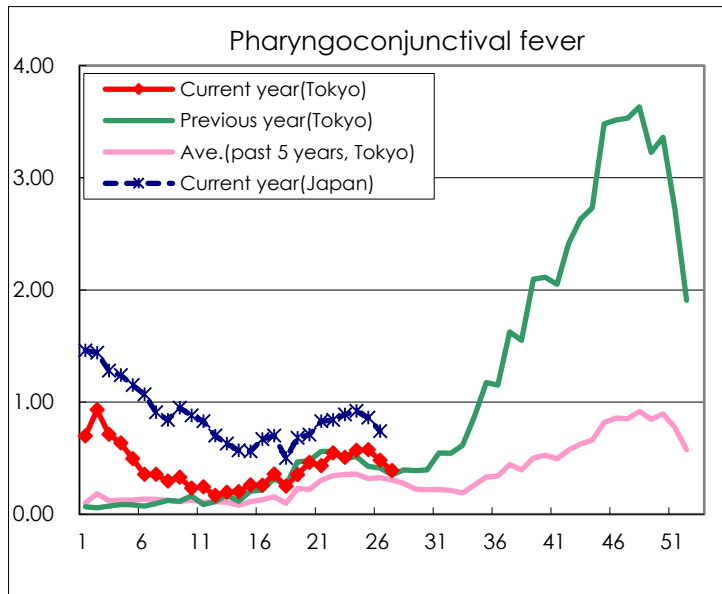
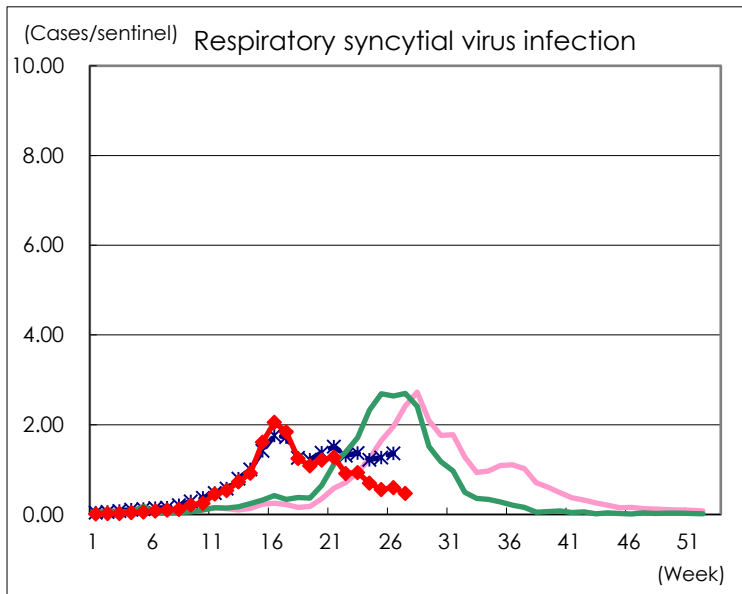
Category	Diseases	Tokyo				
		24th	25th	26th	27th	Cum 2024
V	Amebiasis		2	2	3	54
	Viral hepatitis(excluding hepatitis A and E)	1	1			19
	CRE infection	5	3	2	3	91
	Acute Flaccid Paralysis (excluding Acute poliomyelitis)	1				3
	Acute encephalitis(excluding JE and WNE)				2	25
	Cryptosporidiosis					5
	Creutzfeldt-Jakob disease		1			8
	Severe invasive streptococcal infections(TSLS)	5	1	2	3	164
	Acquired immunodeficiency syndrome (AIDS)	8	5	3	7	142
	Giardiasis					5
	Invasive <i>Haemophilus influenzae</i> disease	2	3			32
	Invasive meningococcal disease	1		1	1	5
	Invasive pneumococcal disease	7	3	1	4	166
	Varicella (limited to hospitalized case)		2	1	4	36
	Congenital rubella syndrome					
	Syphilis	75	80	69	84	1,856
	Disseminated cryptococcosis		3		2	14
	Tetanus					1
	Vancomycin-resistant <i>S. aureus</i> infection					
	Vancomycin-resistant <i>Enterococcus</i> infection	1				4
	Pertussis	6	6	7	13	79
Rubella						
Measles					7	
MDRA infection					1	

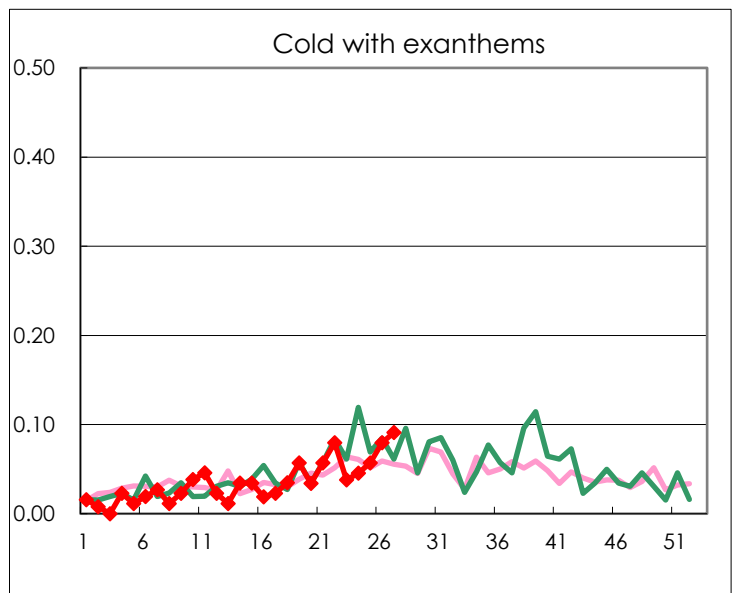
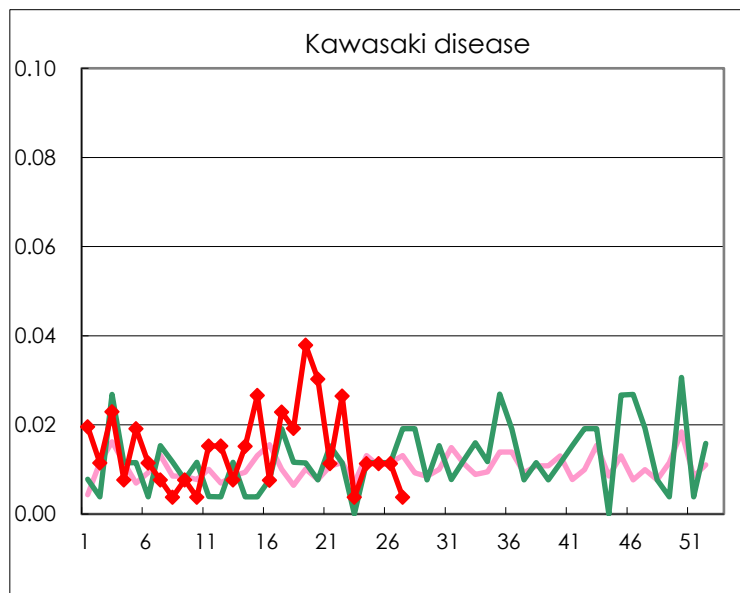
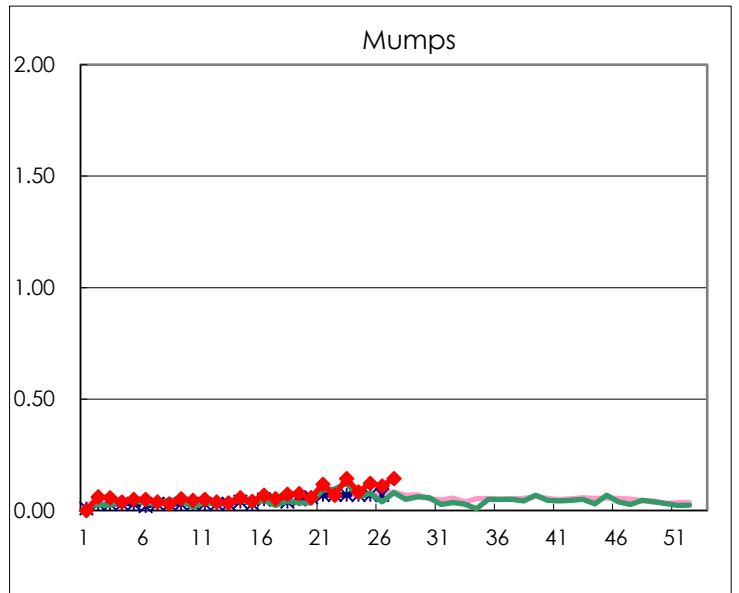
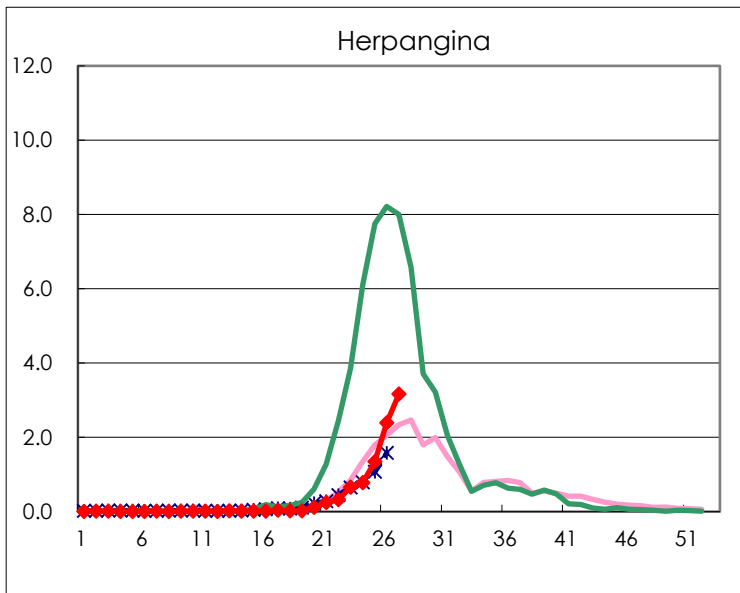
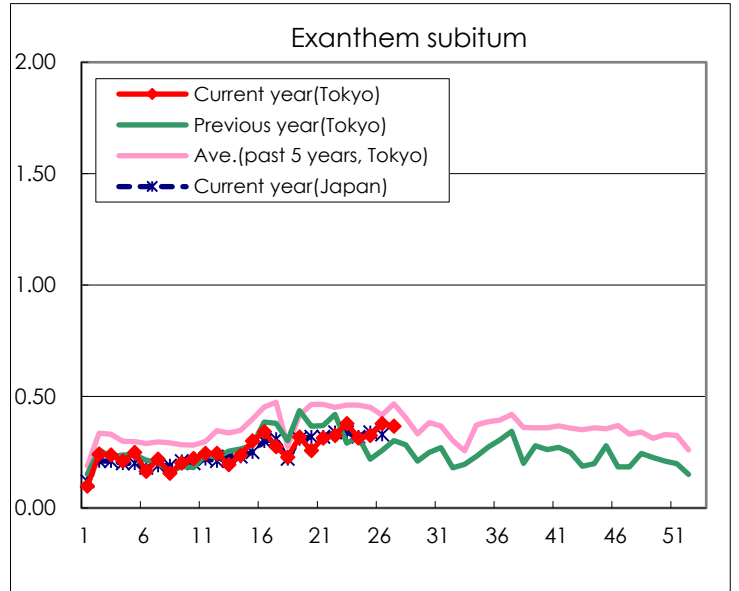
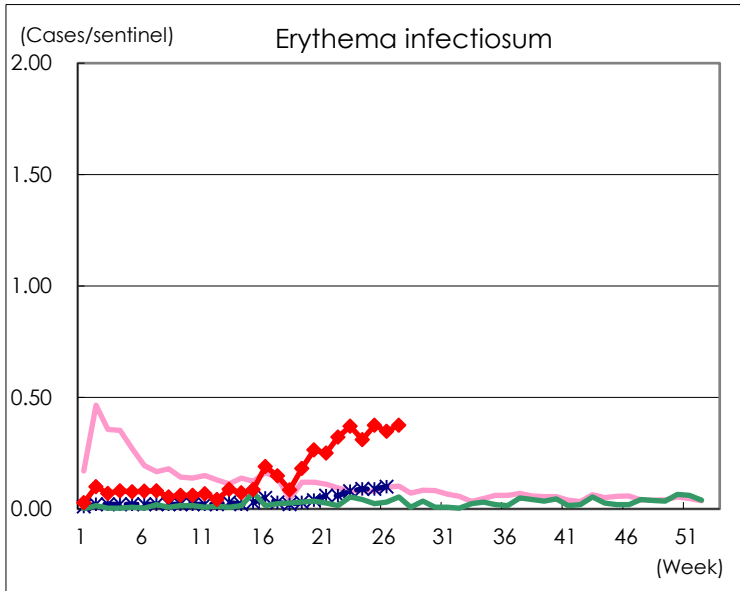
Number of patients with the diseases to be reported
by the designated clinics and hospitals

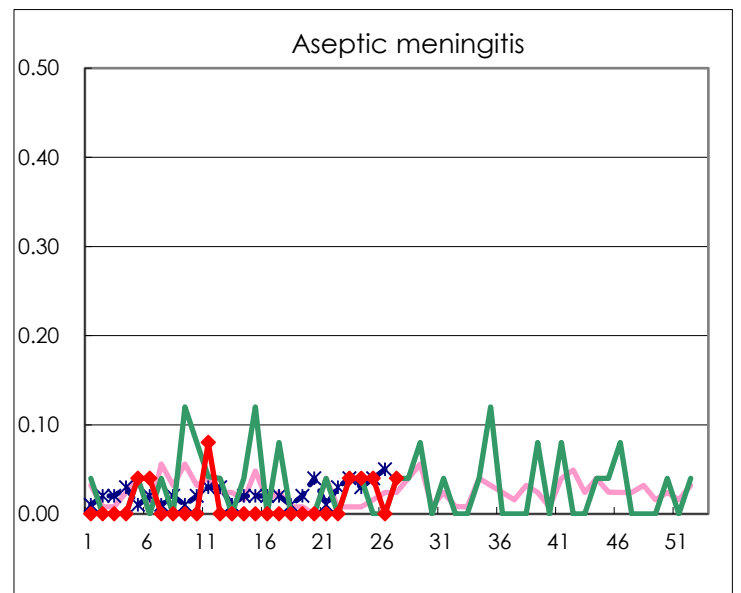
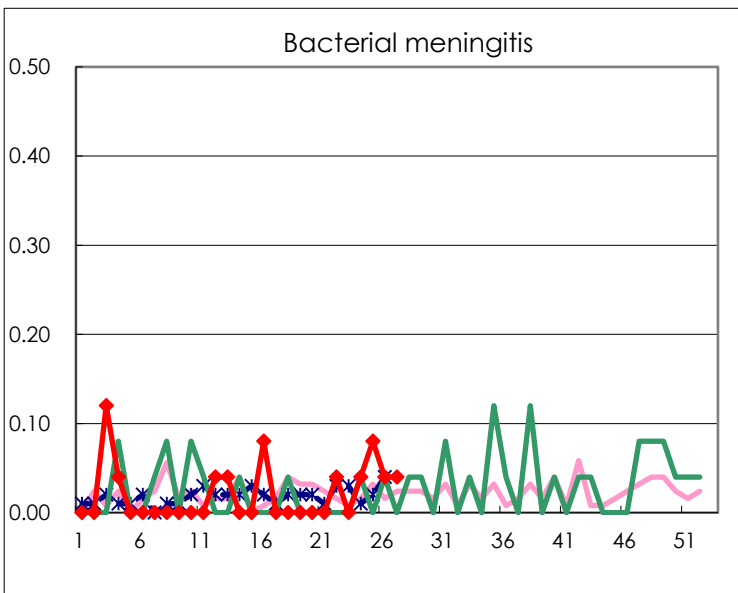
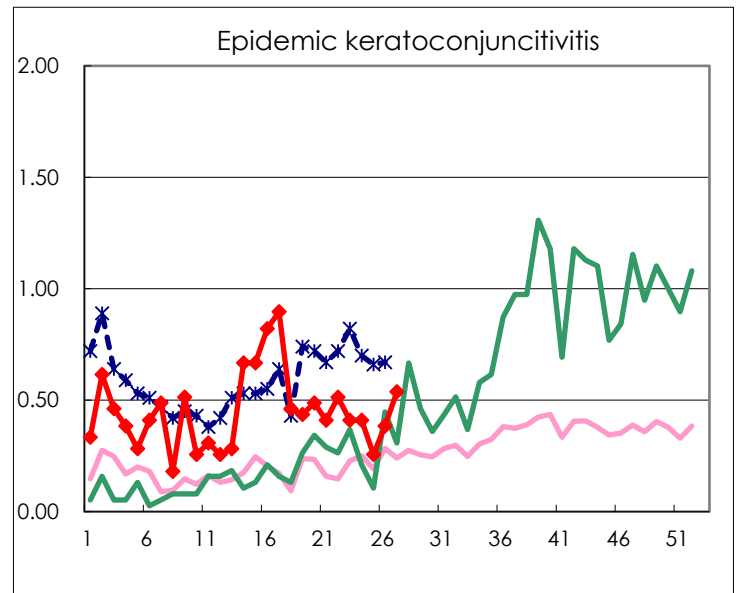
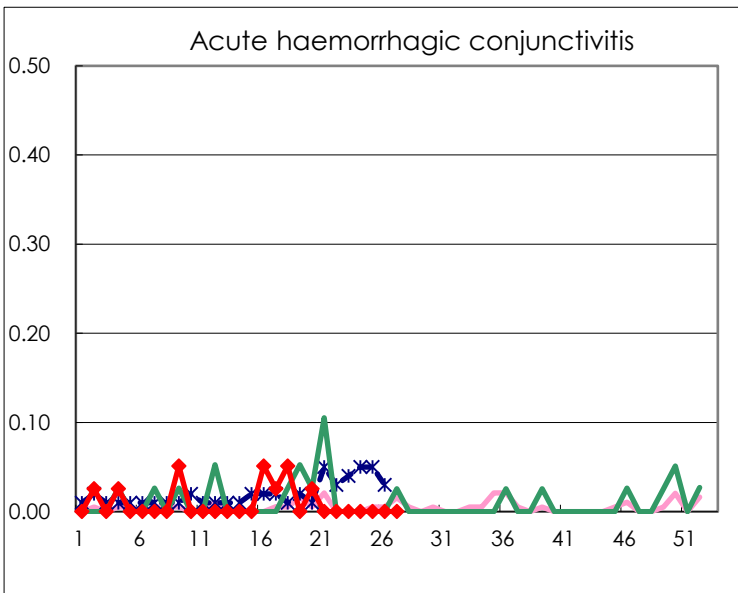
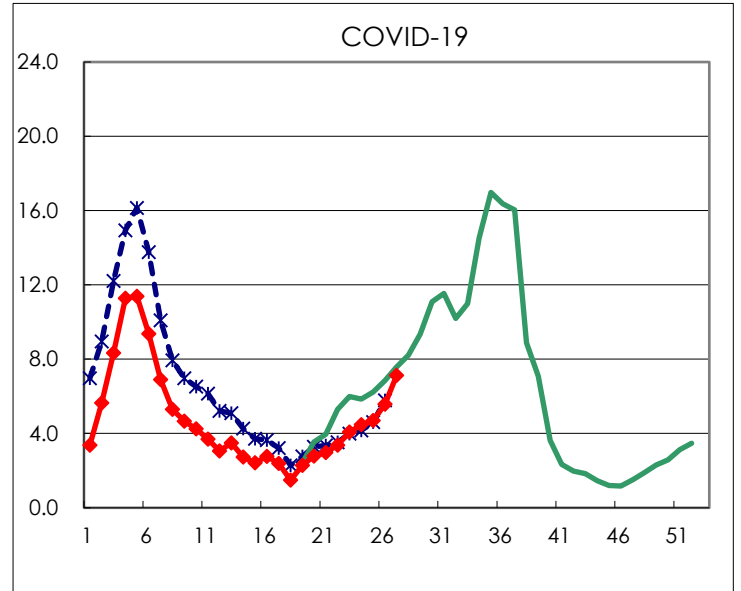
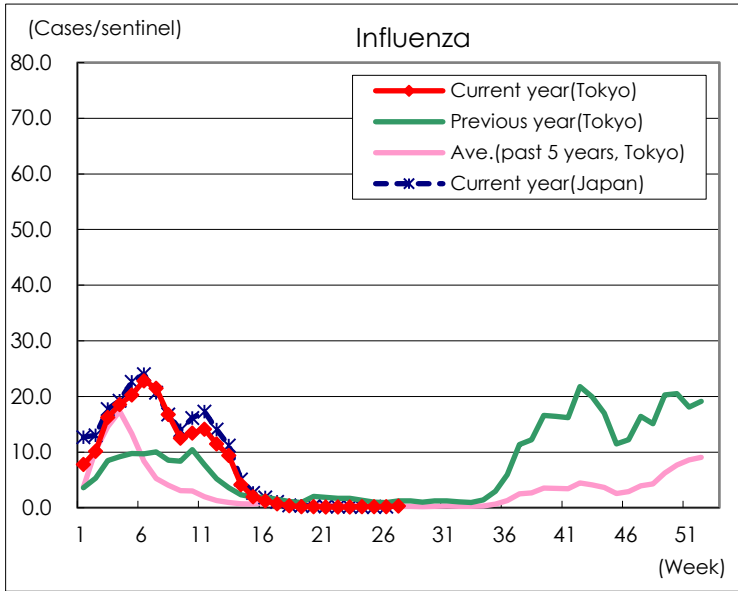
Diseases	Tokyo				
	24th	25th	26th	27th	/sentinel
Respiratory syncytial virus infection	184	147	158	125	0.47
Pharyngoconjunctival fever	150	152	127	103	0.39
Group A streptococcal pharyngitis	1,006	861	862	733	2.78
Infectious gastroenteritis	1,330	1,177	1,093	1,071	4.06
Chickenpox	50	56	49	49	0.19
Hand, foot, and mouth disease	1,076	1,567	2,609	3,686	13.96
Erythema infectiosum	82	99	92	99	0.38
Exanthem subitum	83	86	100	97	0.37
Herpangina	206	355	632	835	3.16
Mumps	22	32	29	38	0.14
Kawasaki disease	3	3	3	1	0.00
Cold with exanthems	12	15	21	24	0.09
Influenza	81	78	76	124	0.30
COVID-19	1,878	1,965	2,334	2,990	7.14
Acute hemorrhagic conjunctivitis					
Epidemic keratoconjunctivitis	16	10	15	21	0.54
Bacterial meningitis	1	2	1	1	0.04
Aseptic meningitis	1	1		1	0.04
Mycoplasma pneumonia	12	15	6	18	0.72
Chlamydial pneumonia (excluding psittacosis)					
Infectious gastroenteritis (only by Rotavirus)		1			
Influenza-Associated Hospitalizations		1	2	4	0.16
COVID-19-Associated Hospitalizations	120	135	140	161	6.44

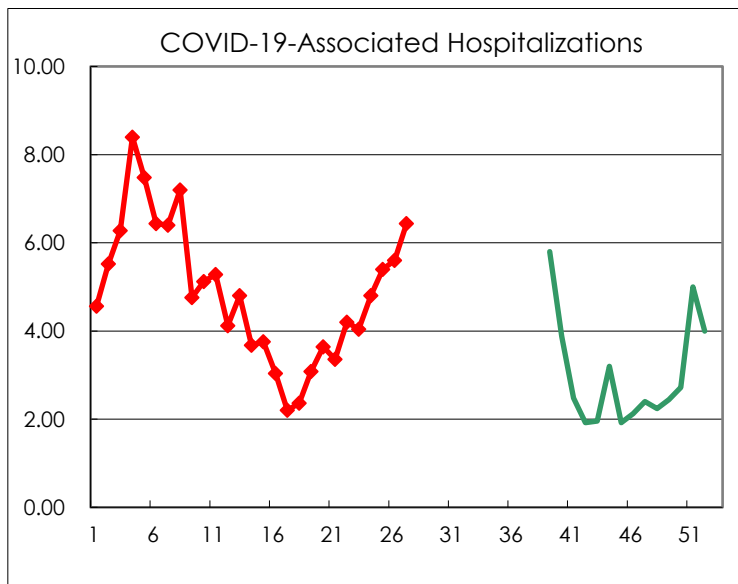
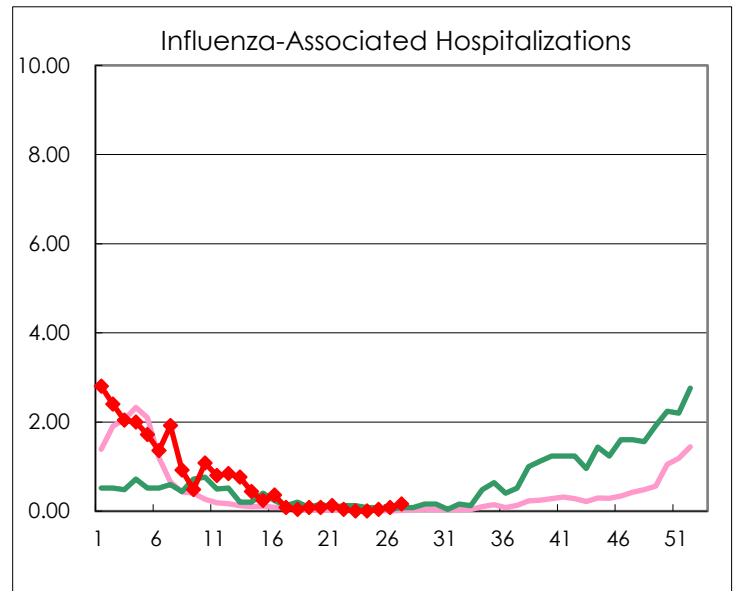
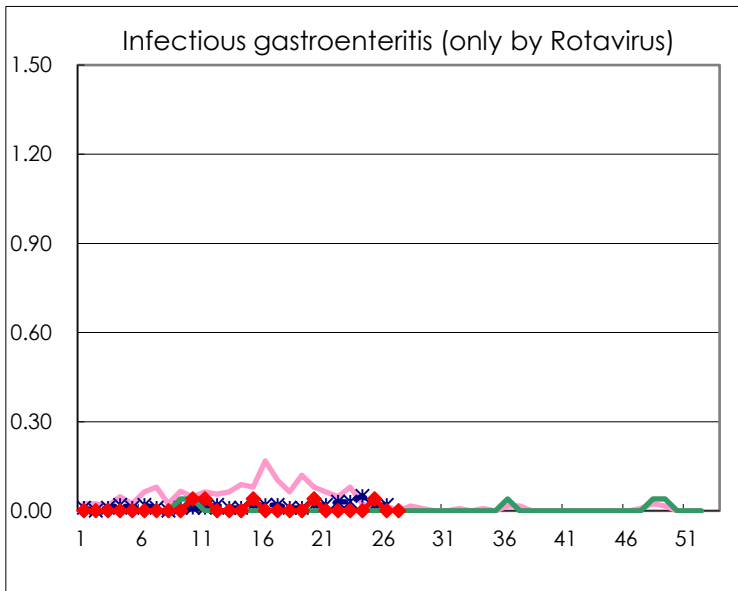
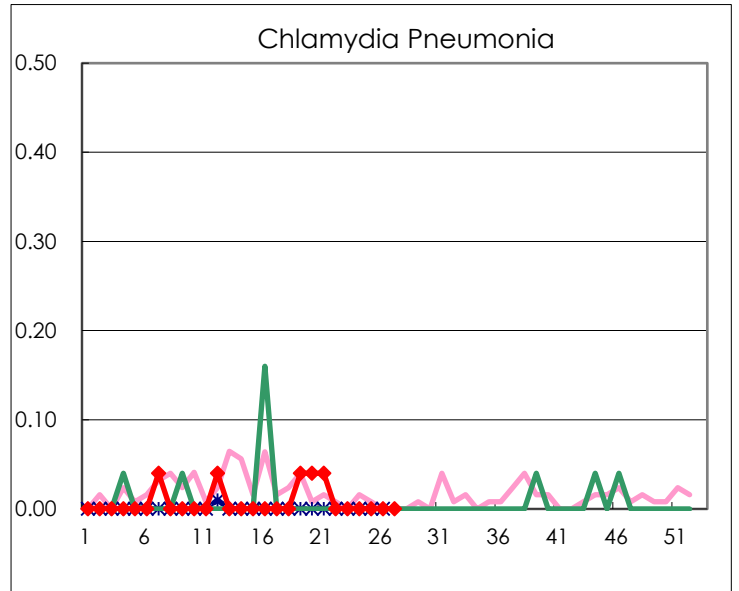
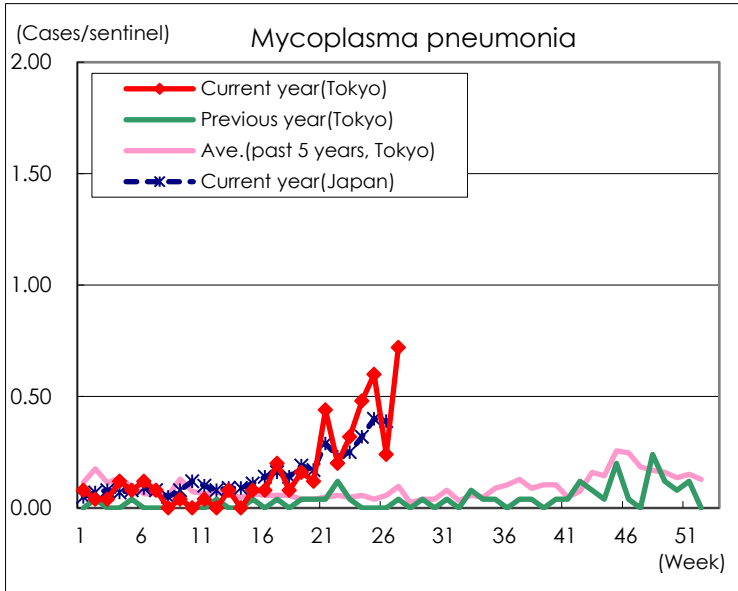
(Blank means 0.)

Disease Trend Graph (weekly reported cases per sentinel in comparison)









Number of sentinel facilities for weekly reporting		
Types of sentinels	Number of sentinels	Sentinels having reported
Pediatric	264	264
Influenza COVID-19	419	419
Ophthalmic	39	39
Specially-designated	25	25