
INFECTIOUS DISEASES WEEKLY REPORT

TOKYO IDWR

Tokyo Metropolitan Infectious Disease Surveillance Center

18 July 2024 / Number 28
(7/8 ~ 7/14)

Surveillance System in Tokyo, Japan

The infectious diseases which all physicians must report
All physicians must report to health centers the incidence of the diseases which are shown at page one. Health centers electronically report the individual cases to Tokyo Metropolitan Infectious Disease Surveillance Center.

The infectious diseases required to be reported by the sentinels
The numbers of patients who visit the sentinel clinics or hospitals during a week are reported to health centers in Tokyo. And they electronically report the numbers to Tokyo Metropolitan Infectious Disease Surveillance Center. We have about 500 sentinel clinics and hospitals in Tokyo.

Tokyo Metropolitan Institute of Public Health

TEL:81-3-3363-3213 FAX:81-3-5332-7365

e-mail:tmiph@section.metro.tokyo.jp

URL:idsc.tmiph.metro.tokyo.lg.jp/

Number of patients with the diseases which all physicians must report

Category	Diseases	Tokyo				
		25th	26th	27th	28th	Cum 2024
I	Ebola hemorrhagic fever					
	Crimean-Congo hemorrhagic fever					
	Smallpox					
	South American hemorrhagic fever					
	Plague					
	Marburg disease					
	Lassa fever					
II	Acute poliomyelitis					
	Tuberculosis	51	40	42	49	1,126
	Diphtheria					
	Severe Acute Respiratory Syndrome(SARS)					
	Middle East Respiratory Syndrome (MERS)					
	Avian influenza H5N1					
	Avian influenza H7N9					
III	Cholera					2
	Shigellosis		1			4
	Enterohemorrhagic Escherichia coli infection	10	9	15	14	137
	Typhoid fever			1		3
	Paratyphoid fever					2
IV	Hepatitis E	3	5	3	3	79
	West Nile fever					
	Hepatitis A	1				13
	Echinococcosis					
	Mpox					12
	Yellow fever					
	Psittacosis					
	Omsk hemorrhagic fever					
	Relapsing fever					
	Kyasanur forest disease					
	Q fever					
	Rabies					
	Coccidioidomycosis					1
	Zika virus infection					
	Severe Fever with Thrombocytopenia Syndrome					
	Hemorrhagic fever with renal syndrome					
	Western equine encephalitis					
	Tick-borne encephalitis					
	Anthrax					
	Chikungunya fever					
	Scrub typhus(Tsutsugamushi disease)					
	Dengue fever	1	1	2	1	32
	Eastern equine encephalitis					
	Avian influenza (excluding H5N1 and H7N9)					
	Nipah virus infection					
	Japanese spotted fever					
	Japanese encephalitis					
	Hantavirus pulmonary syndrome					
	Herpes B virus infection					
	Glanders					
	Brucellosis					
	Venezuelan equine encephalitis					
	Hendra virus infection					
	Epidemic typhus					
	Botulism					
	Malaria		1			6
	Tularemia					
Lyme disease						
Lyssavirus infection(excluding rabies)						
Rift valley fever						
Melioidosis						
Legionellosis	2	4	6	13	87	
Leptospirosis					1	
Rocky mountain spotted fever						

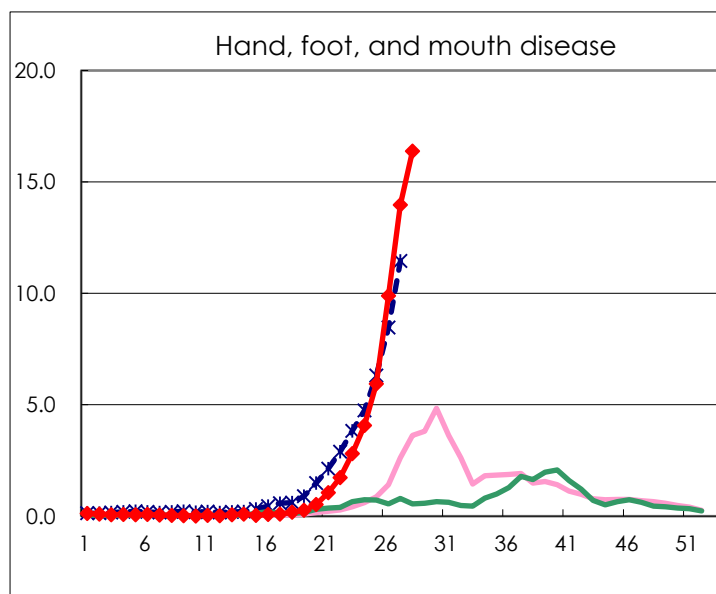
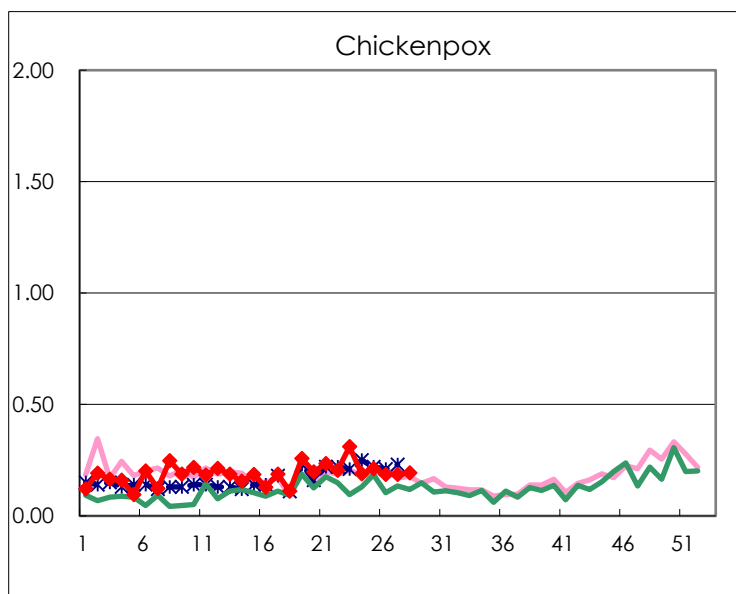
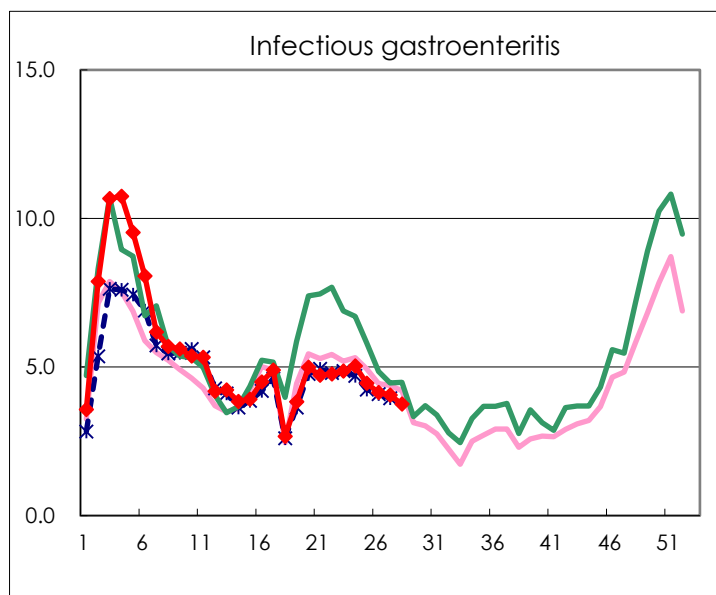
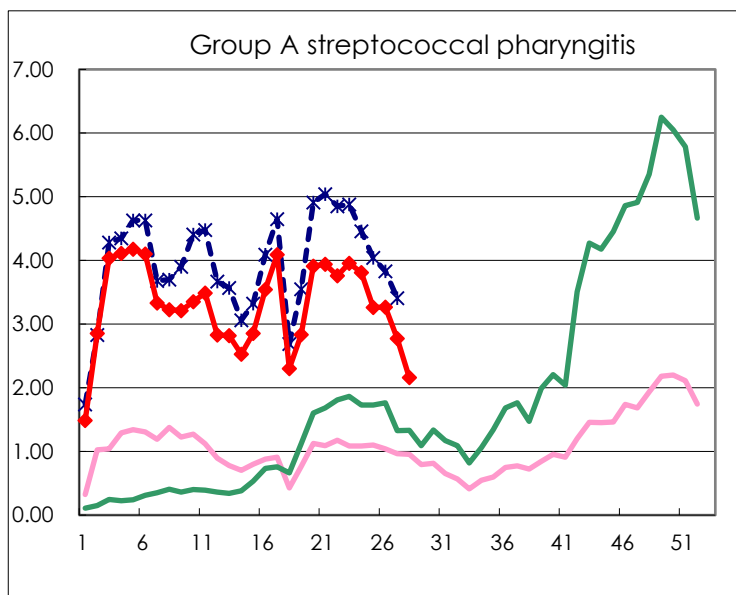
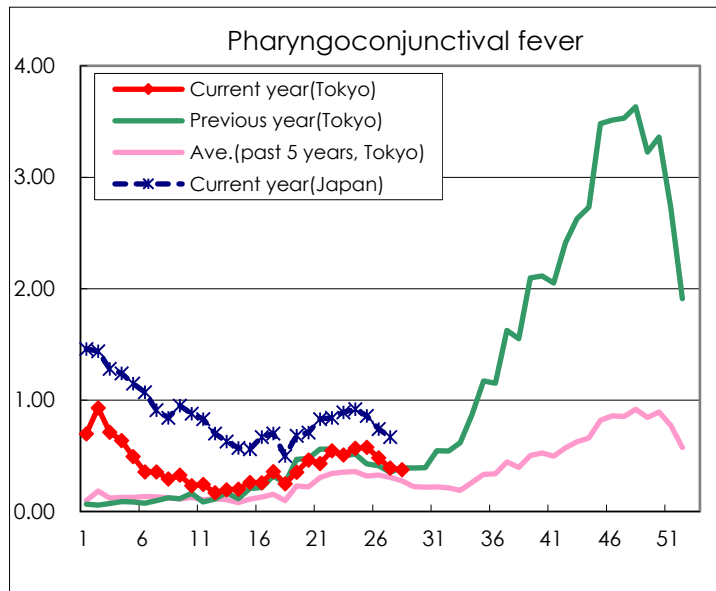
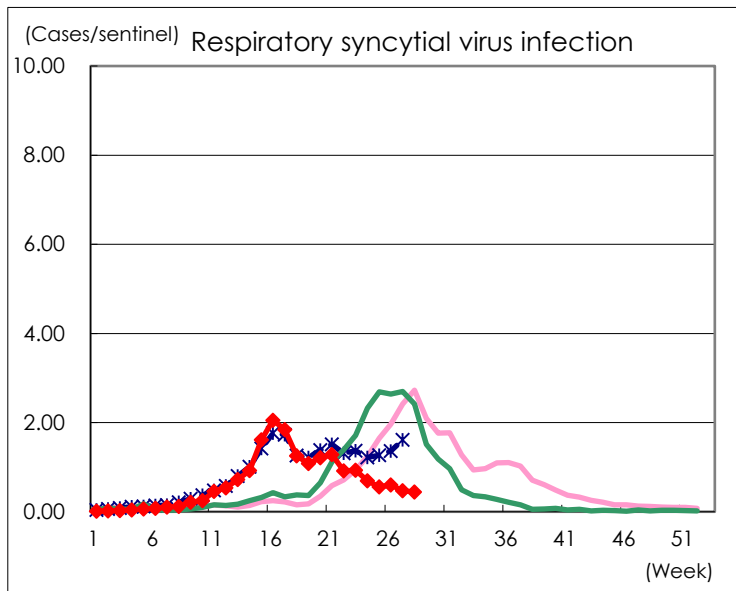
Category	Diseases	Tokyo				
		25th	26th	27th	28th	Cum 2024
V	Amebiasis	2	2	3	1	55
	Viral hepatitis(excluding hepatitis A and E)	1				19
	CRE infection	3	2	3	3	94
	Acute Flaccid Paralysis (excluding Acute poliomyelitis)					3
	Acute encephalitis(excluding JE and WNE)			2	2	27
	Cryptosporidiosis					5
	Creutzfeldt-Jakob disease	1				8
	Severe invasive streptococcal infections(TSLS)	1	2	3	3	167
	Acquired immunodeficiency syndrome (AIDS)	5	3	7	5	147
	Giardiasis					5
	Invasive <i>Haemophilus influenzae</i> disease	3			1	33
	Invasive meningococcal disease		1	1		5
	Invasive pneumococcal disease	3	1	4	3	169
	Varicella (limited to hospitalized case)	2	1	4	1	37
	Congenital rubella syndrome					
	Syphilis	80	69	85	66	1,923
	Disseminated cryptococcosis	3		2	1	15
	Tetanus					1
	Vancomycin-resistant <i>S. aureus</i> infection					
	Vancomycin-resistant Enterococcus infection					4
	Pertussis	6	7	14	2	82
	Rubella			1		1
	Measles					7
MDRA infection					1	

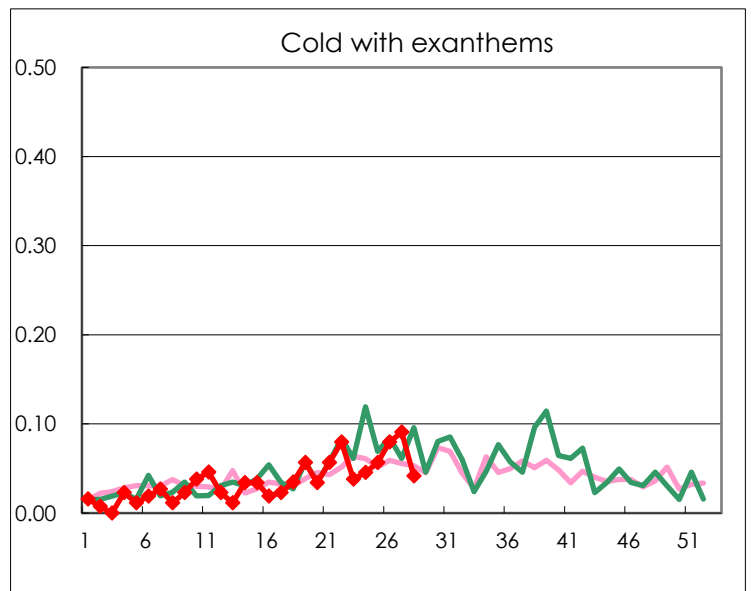
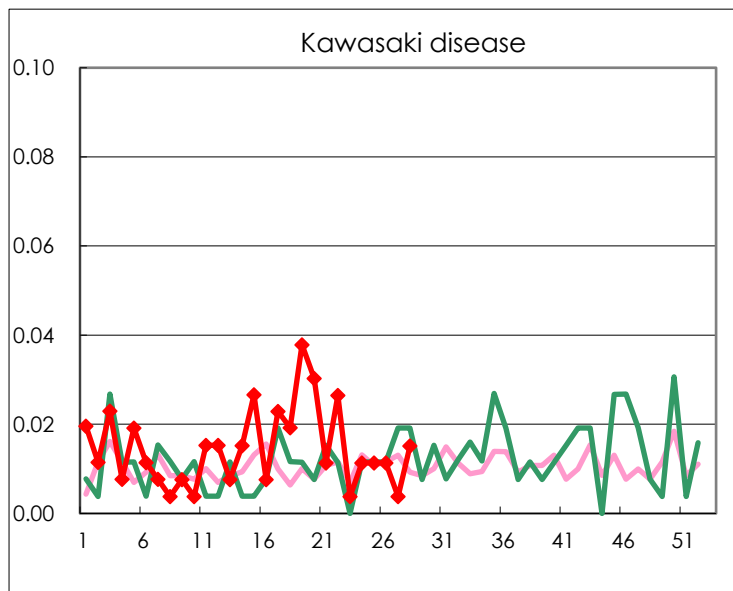
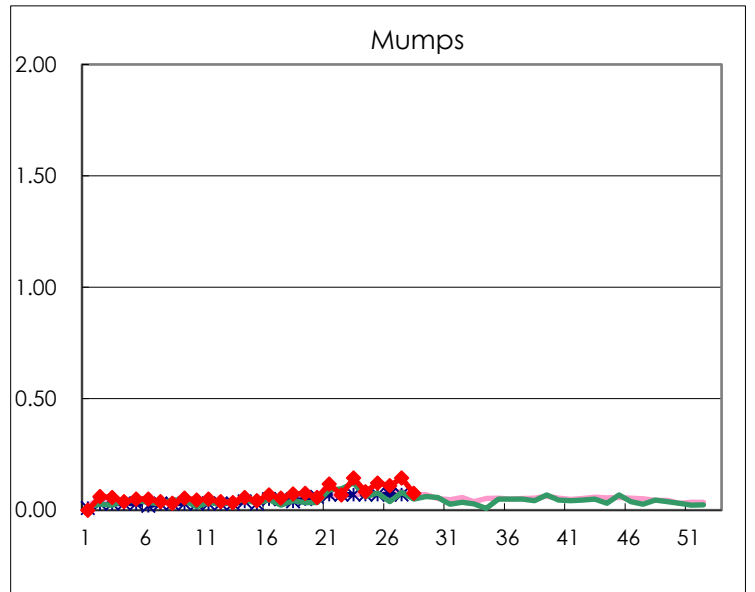
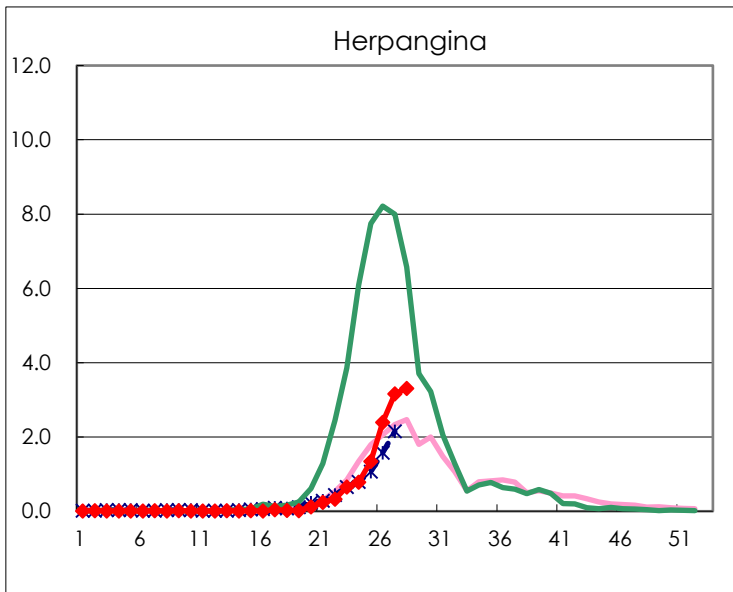
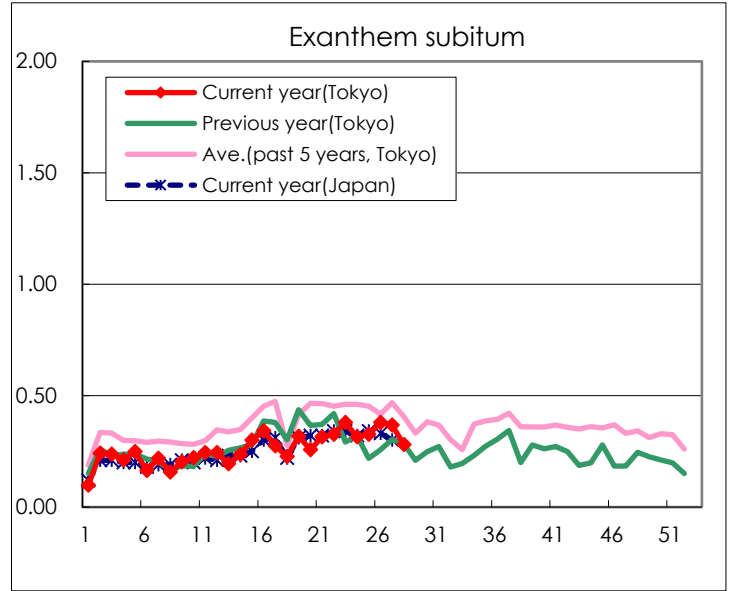
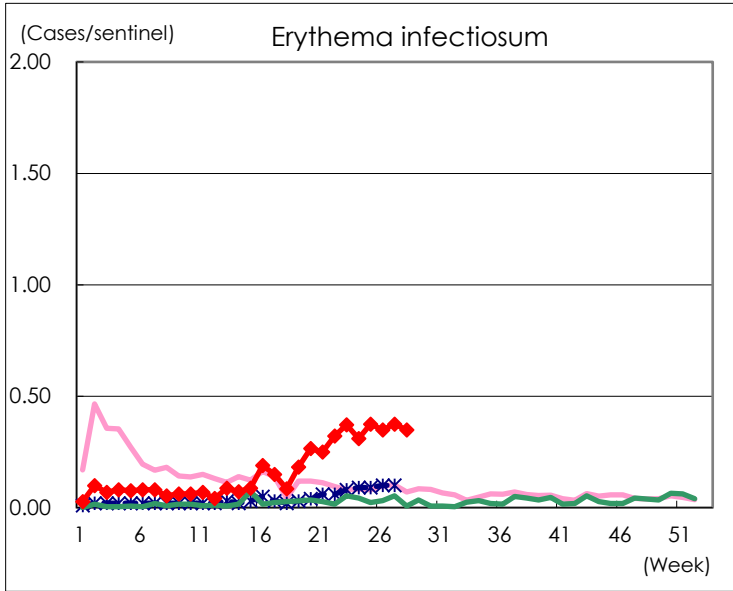
Number of patients with the diseases to be reported
by the designated clinics and hospitals

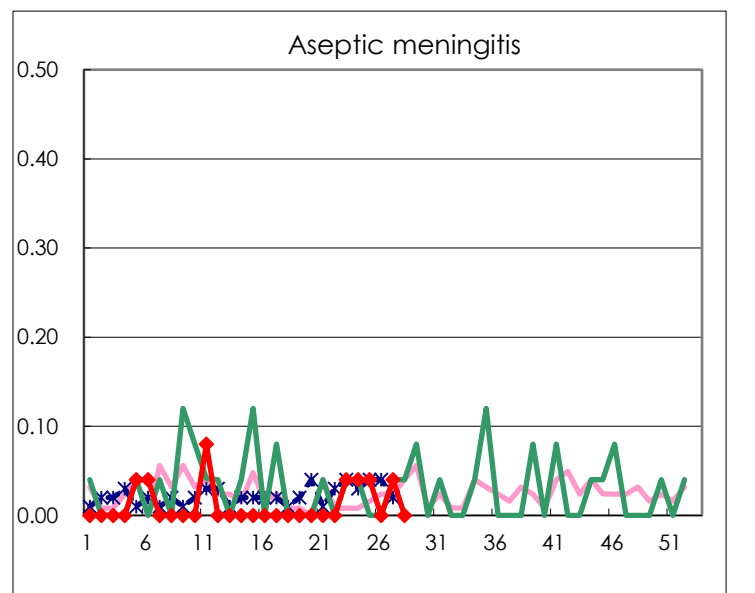
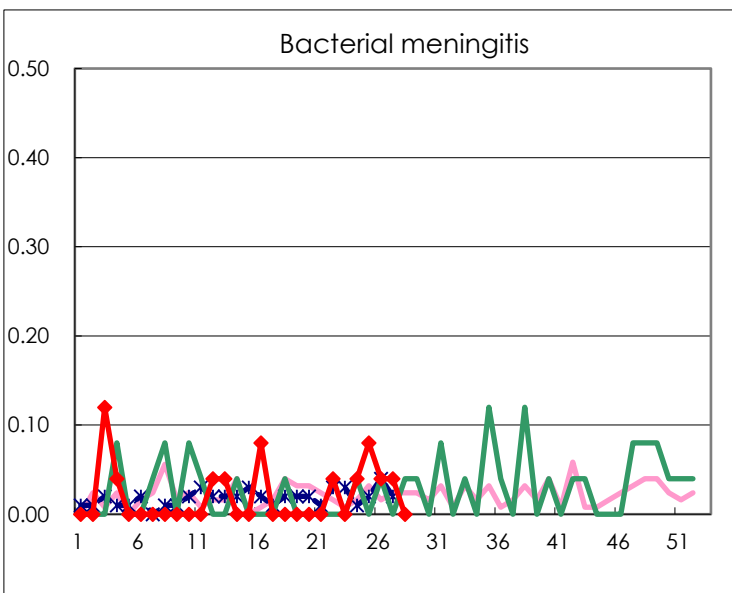
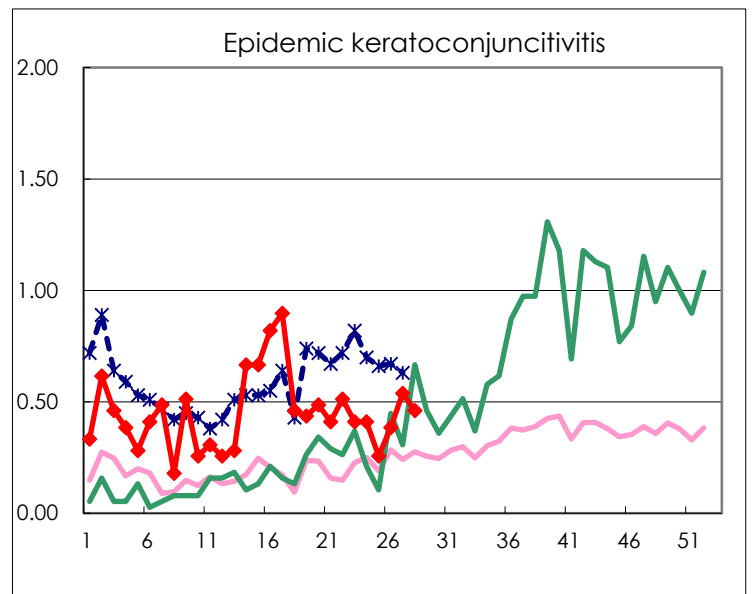
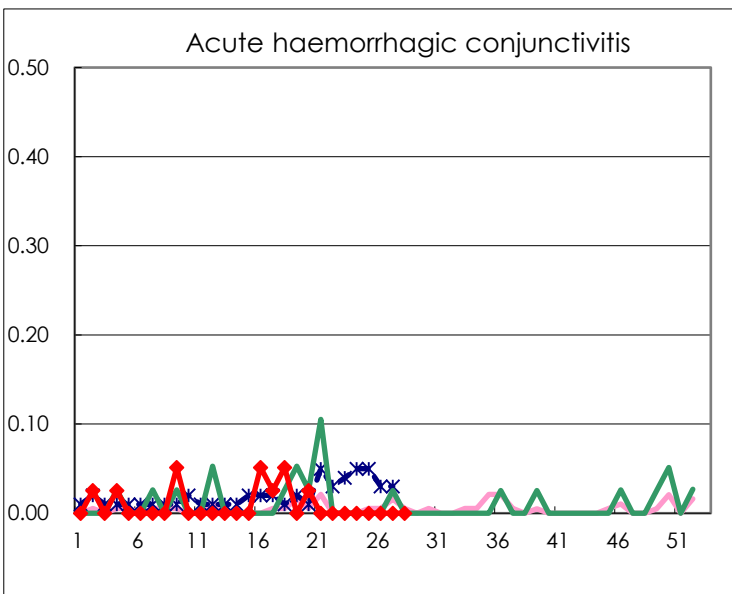
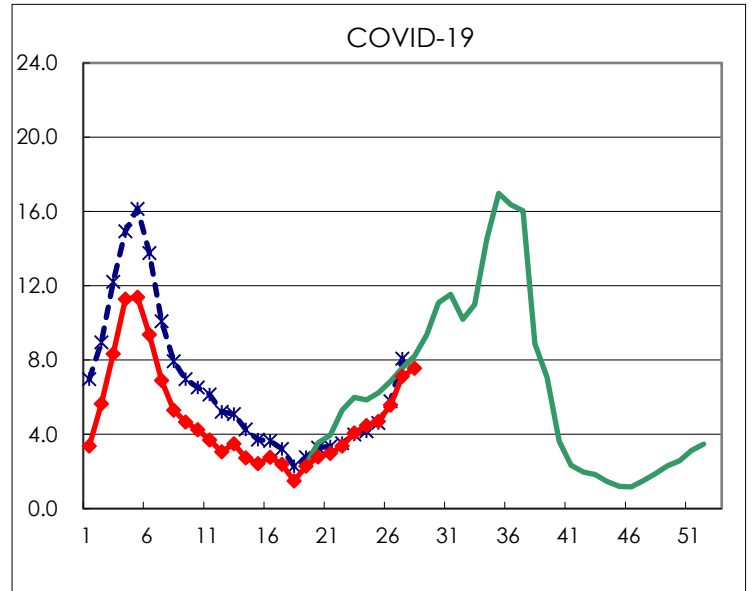
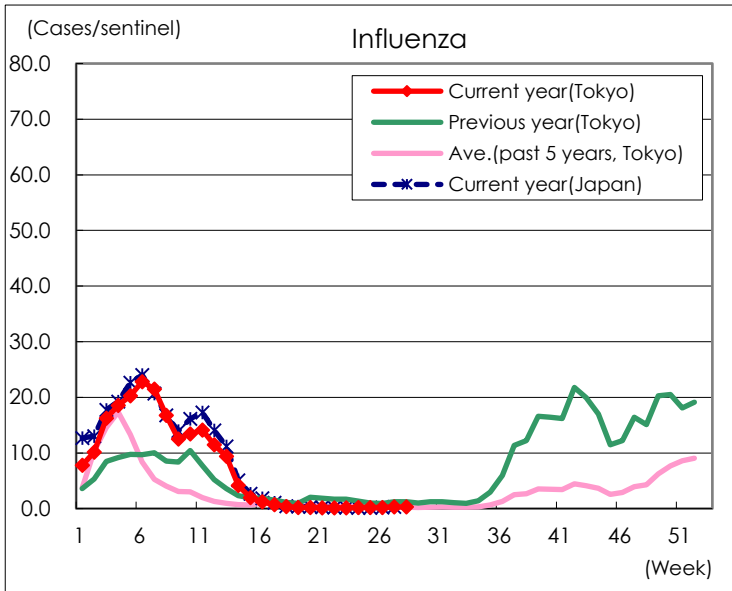
Diseases	Tokyo				
	25th	26th	27th	28th	/sentinel
Respiratory syncytial virus infection	147	158	125	116	0.44
Pharyngoconjunctival fever	152	127	103	99	0.38
Group A streptococcal pharyngitis	861	862	733	571	2.16
Infectious gastroenteritis	1,177	1,093	1,071	990	3.75
Chickenpox	56	49	49	51	0.19
Hand, foot, and mouth disease	1,567	2,609	3,689	4,326	16.39
Erythema infectiosum	99	92	99	92	0.35
Exanthem subitum	86	100	97	74	0.28
Herpangina	355	632	835	874	3.31
Mumps	32	29	38	20	0.08
Kawasaki disease	3	3	1	4	0.02
Cold with exanthems	15	21	24	11	0.04
Influenza	78	76	124	139	0.33
COVID-19	1,965	2,334	2,990	3,146	7.56
Acute hemorrhagic conjunctivitis					
Epidemic keratoconjunctivitis	10	15	21	18	0.46
Bacterial meningitis	2	1	1		
Aseptic meningitis	1		1		
Mycoplasma pneumonia	15	6	18	39	1.56
Chlamydial pneumonia (excluding psittacosis)					
Infectious gastroenteritis (only by Rotavirus)	1				
Influenza-Associated Hospitalizations	1	2	4	1	0.04
COVID-19-Associated Hospitalizations	135	140	161	208	8.32

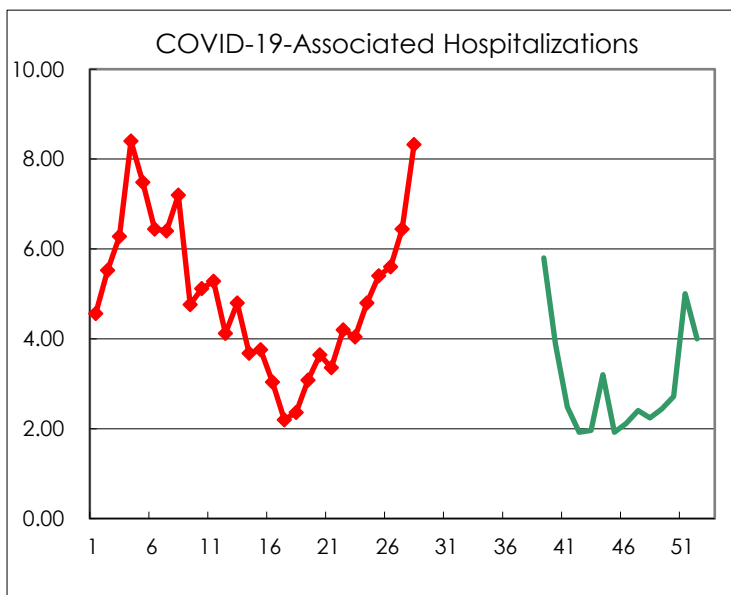
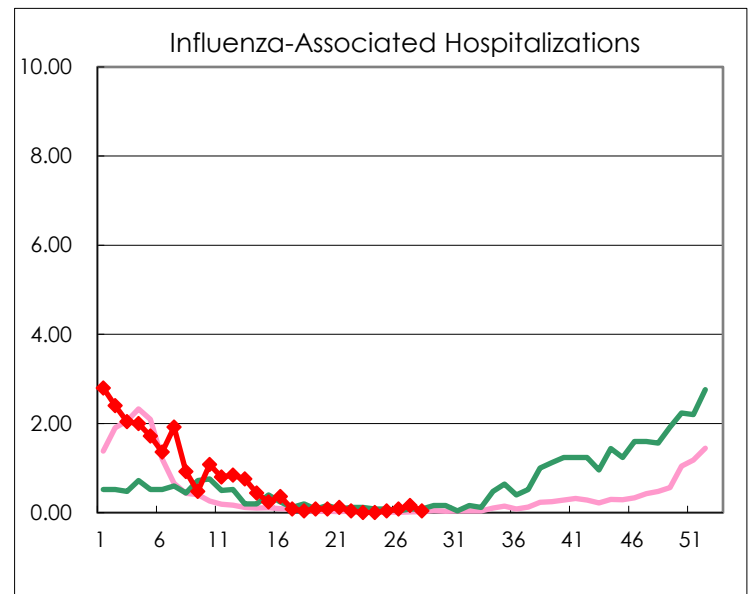
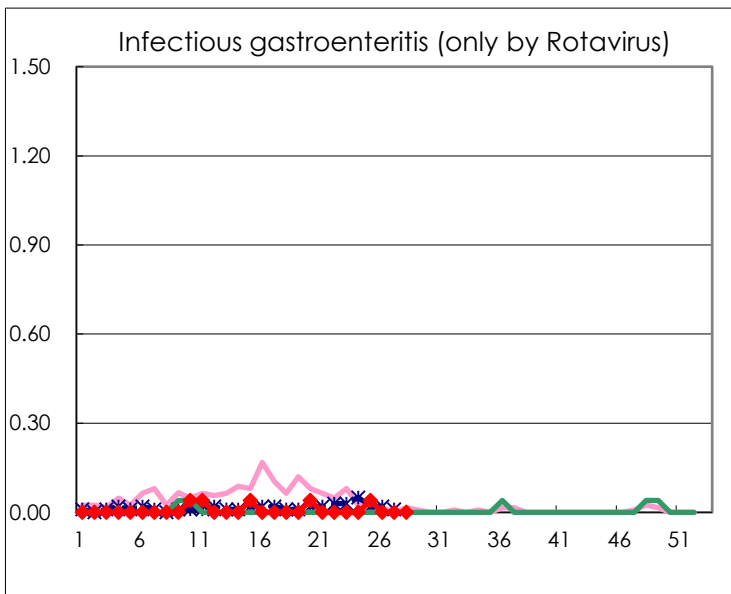
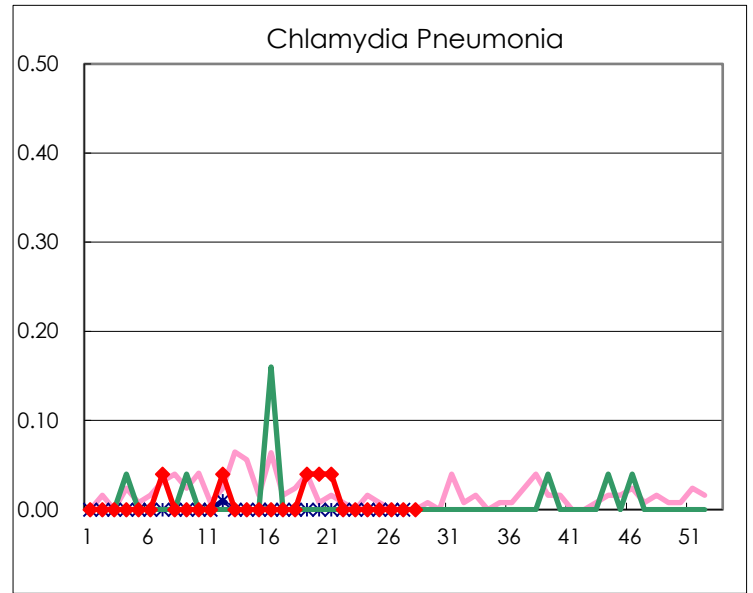
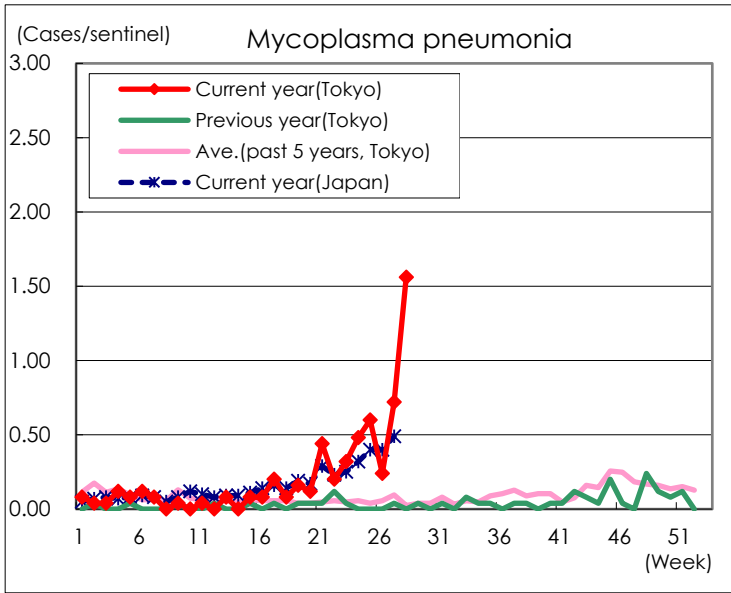
(Blank means 0.)

Disease Trend Graph (weekly reported cases per sentinel in comparison)









Number of sentinel facilities for weekly reporting		
Types of sentinels	Number of sentinels	Sentinels having reported
Pediatric	264	264
Influenza COVID-19	419	416
Ophthalmic	39	39
Specially-designated	25	25