
INFECTIOUS DISEASES WEEKLY REPORT

TOKYO iDWR

Tokyo Metropolitan Infectious Disease Surveillance Center

25 July 2024 / Number 29
(7/15 ~ 7/21)

Surveillance System in Tokyo, Japan

The infectious diseases which all physicians must report
All physicians must report to health centers the incidence of the diseases which are shown at page one. Health centers electronically report the individual cases to Tokyo Metropolitan Infectious Disease Surveillance Center.

The infectious diseases required to be reported by the sentinels
The numbers of patients who visit the sentinel clinics or hospitals during a week are reported to health centers in Tokyo. And they electronically report the numbers to Tokyo Metropolitan Infectious Disease Surveillance Center. We have about 500 sentinel clinics and hospitals in Tokyo.

Tokyo Metropolitan Institute of Public Health

TEL:81-3-3363-3213 FAX:81-3-5332-7365

e-mail:tmiph@section.metro.tokyo.jp

URL:idsc.tmiph.metro.tokyo.lg.jp/

Number of patients with the diseases which all physicians must report

Category	Diseases	Tokyo				
		26th	27th	28th	29th	Cum 2024
I	Ebola hemorrhagic fever					
	Crimean-Congo hemorrhagic fever					
	Smallpox					
	South American hemorrhagic fever					
	Plague					
	Marburg disease					
	Lassa fever					
II	Acute poliomyelitis					
	Tuberculosis	41	43	49	32	1,167
	Diphtheria					
	Severe Acute Respiratory Syndrome(SARS)					
	Middle East Respiratory Syndrome (MERS)					
	Avian influenza H5N1					
	Avian influenza H7N9					
III	Cholera					2
	Shigellosis	1				4
	Enterohemorrhagic Escherichia coli infection	9	15	14	14	151
	Typhoid fever		1			3
	Paratyphoid fever					2
IV	Hepatitis E	5	3	3	2	81
	West Nile fever					
	Hepatitis A				1	14
	Echinococcosis					
	Mpox					12
	Yellow fever					
	Psittacosis					
	Omsk hemorrhagic fever					
	Relapsing fever					
	Kyasanur forest disease					
	Q fever					
	Rabies					
	Coccidioidomycosis					1
	Zika virus infection					
	Severe Fever with Thrombocytopenia Syndrome					
	Hemorrhagic fever with renal syndrome					
	Western equine encephalitis					
	Tick-borne encephalitis					
	Anthrax					
	Chikungunya fever					
	Scrub typhus(Tsutsugamushi disease)					
	Dengue fever	1	2	1		32
	Eastern equine encephalitis					
	Avian influenza (excluding H5N1 and H7N9)					
	Nipah virus infection					
	Japanese spotted fever					
	Japanese encephalitis					
	Hantavirus pulmonary syndrome					
	Herpes B virus infection					
	Glanders					
	Brucellosis					
	Venezuelan equine encephalitis					
	Hendra virus infection					
Epidemic typhus						
Botulism						
Malaria	1			1	7	
Tularemia						
Lyme disease						
Lyssavirus infection(excluding rabies)						
Rift valley fever						
Melioidosis						
Legionellosis	4	6	13	7	94	
Leptospirosis					1	
Rocky mountain spotted fever						

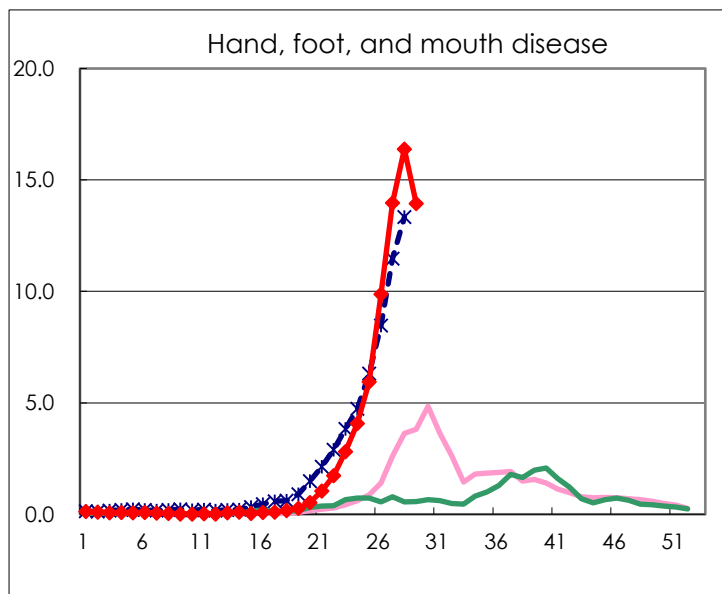
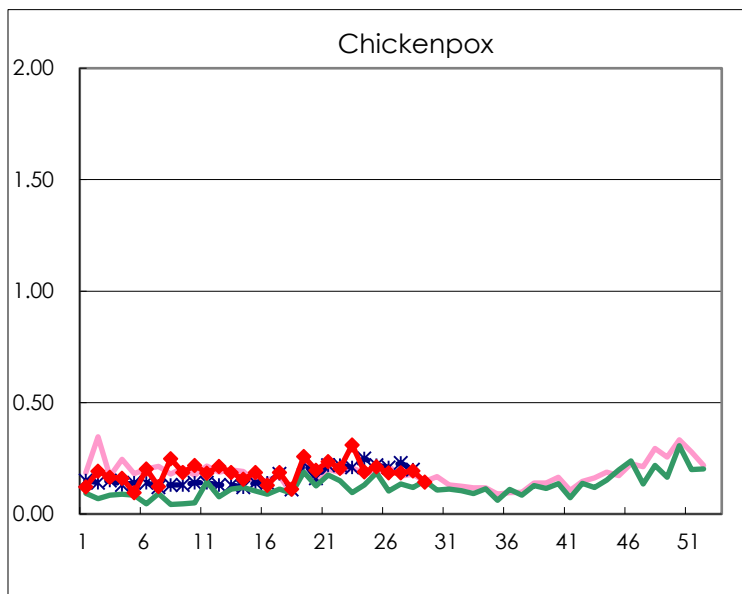
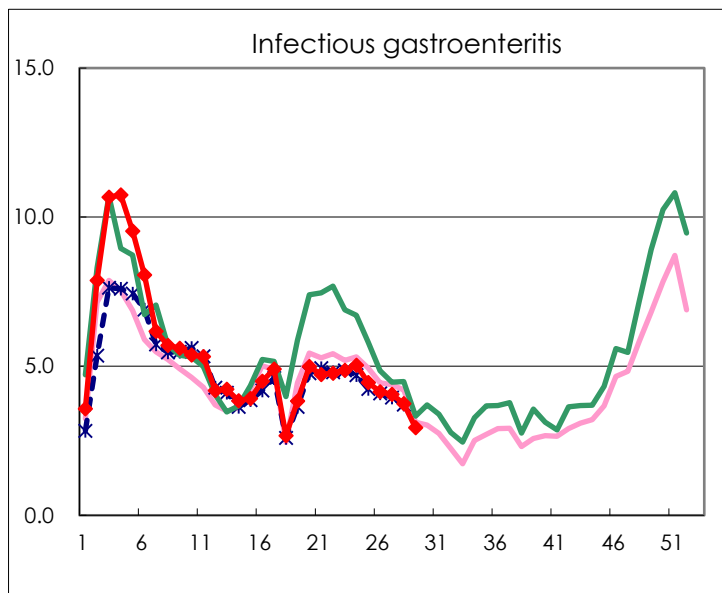
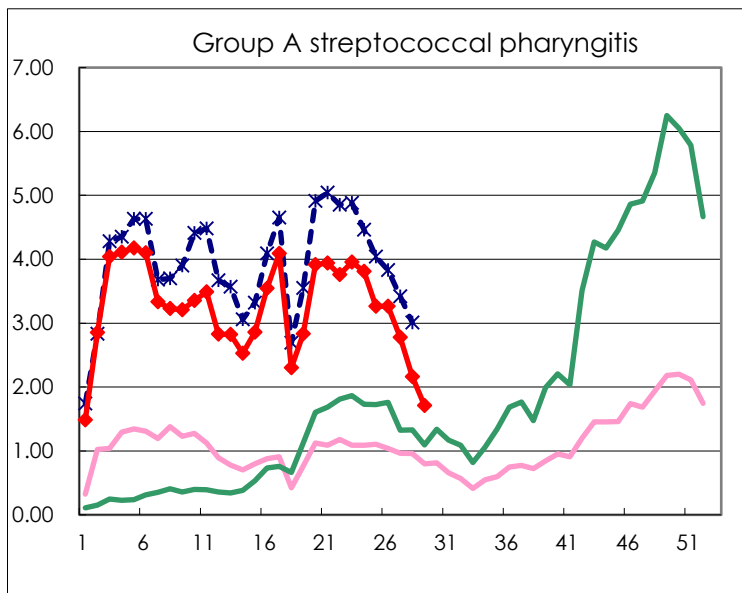
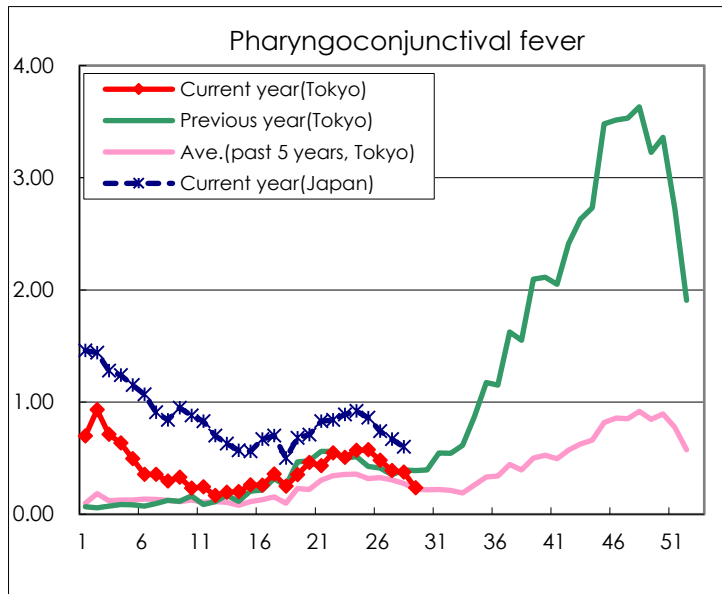
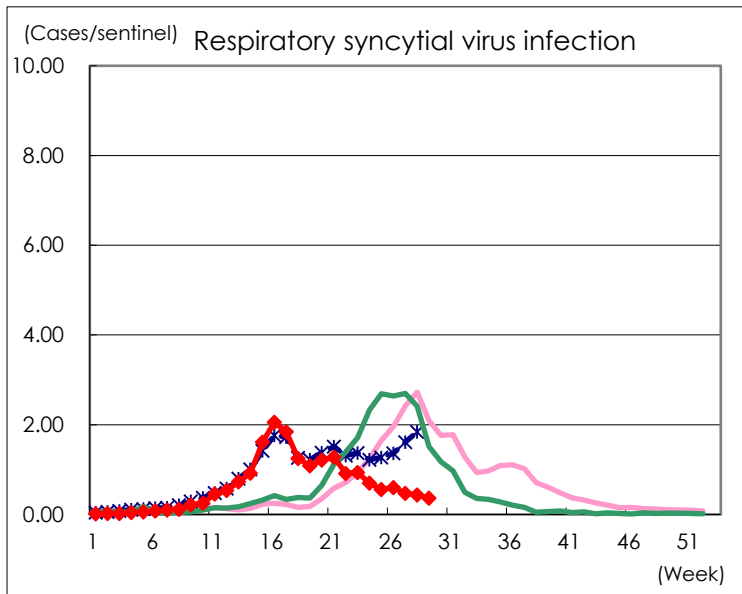
Category	Diseases	Tokyo				
		26th	27th	28th	29th	Cum 2024
V	Amebiasis	2	3	1	5	60
	Viral hepatitis(excluding hepatitis A and E)				3	22
	CRE infection	2	3	3	7	101
	Acute Flaccid Paralysis (excluding Acute poliomyelitis)					3
	Acute encephalitis(excluding JE and WNE)		2	2		27
	Cryptosporidiosis				1	6
	Creutzfeldt-Jakob disease					8
	Severe invasive streptococcal infections(TSLS)	2	3	3	6	173
	Acquired immunodeficiency syndrome (AIDS)	3	7	5	4	151
	Giardiasis				1	6
	Invasive <i>Haemophilus influenzae</i> disease			1	2	35
	Invasive meningococcal disease	1	1			5
	Invasive pneumococcal disease	1	4	3	2	171
	Varicella (limited to hospitalized case)	1	4	1		38
	Congenital rubella syndrome					
	Syphilis	69	85	70	68	1,997
	Disseminated cryptococcosis		2	1	1	16
	Tetanus					1
	Vancomycin-resistant <i>S. aureus</i> infection					
	Vancomycin-resistant <i>Enterococcus</i> infection				1	5
	Pertussis	7	14	2	1	83
Rubella		1			1	
Measles				1	8	
MDRA infection					1	

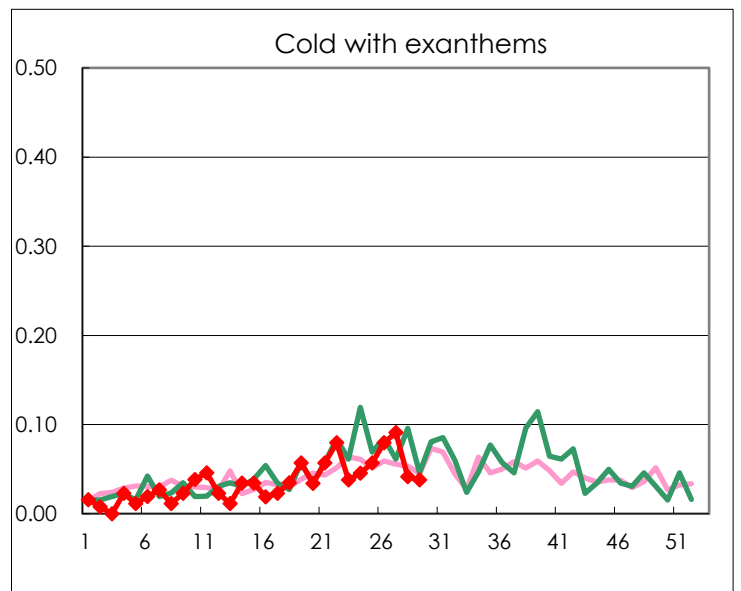
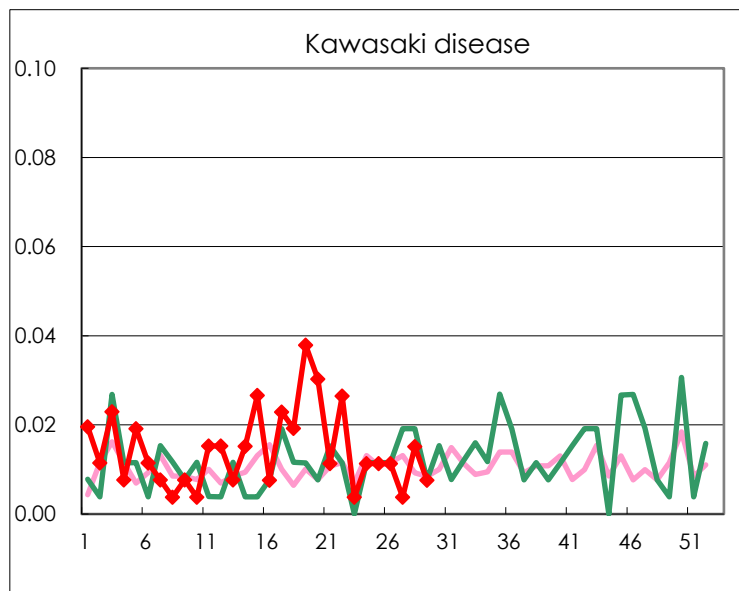
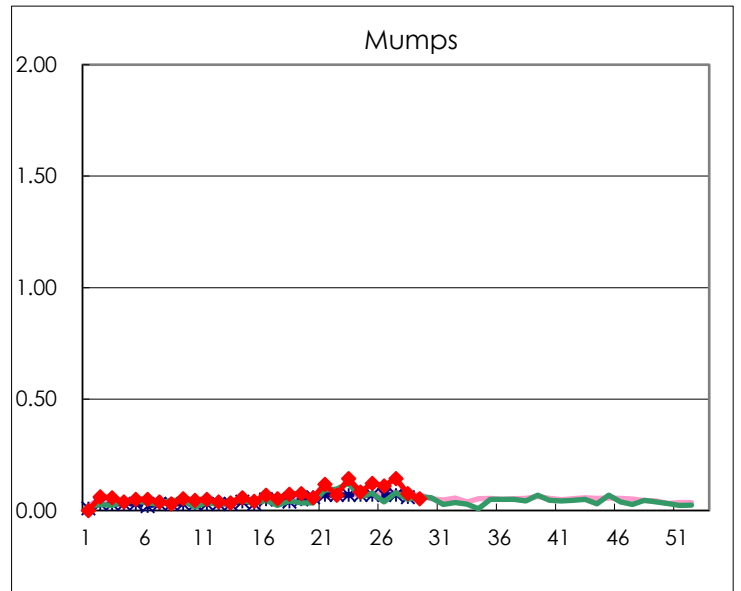
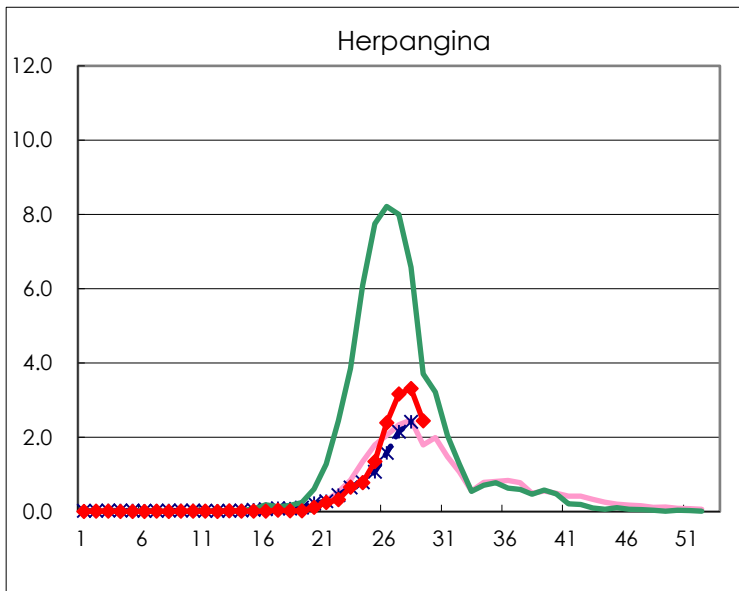
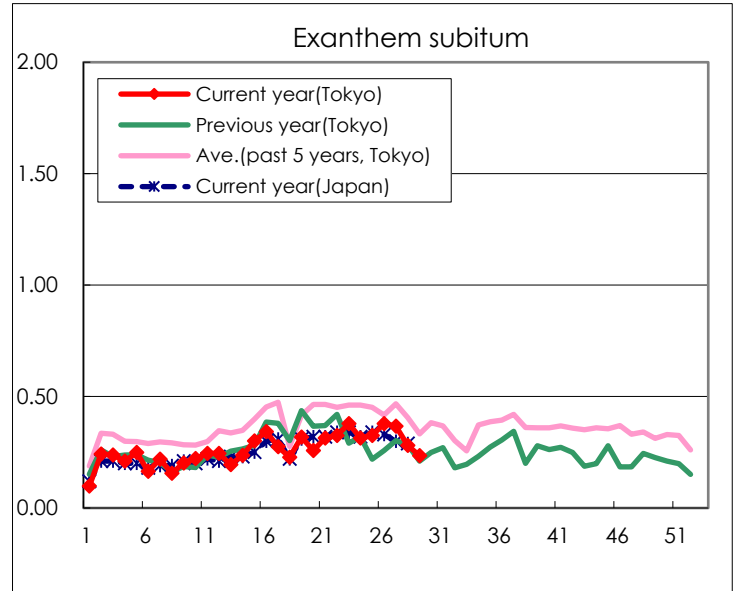
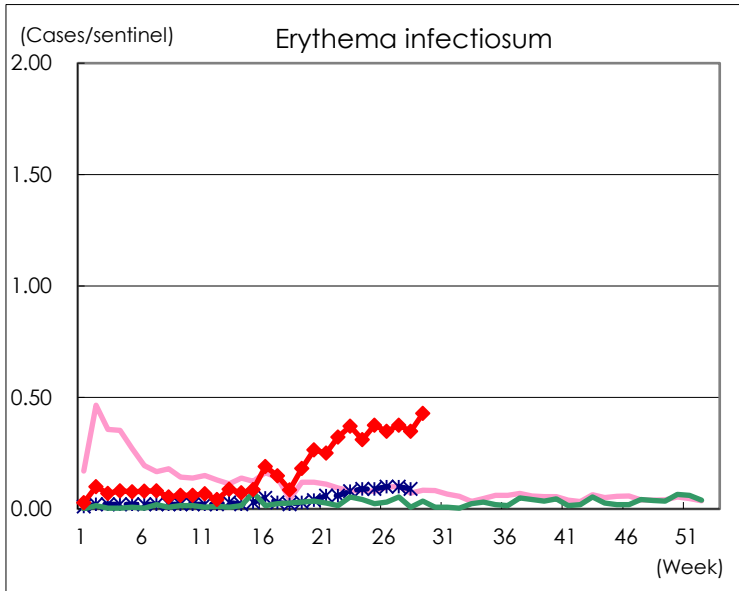
Number of patients with the diseases to be reported
by the designated clinics and hospitals

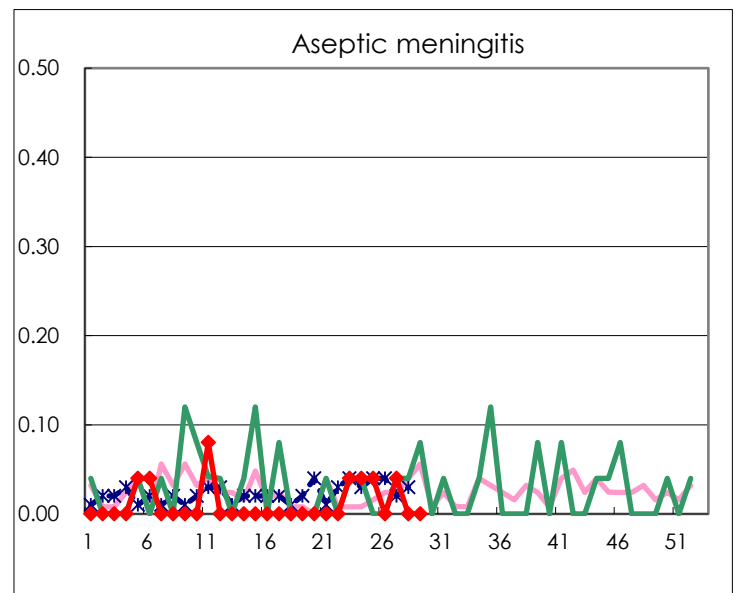
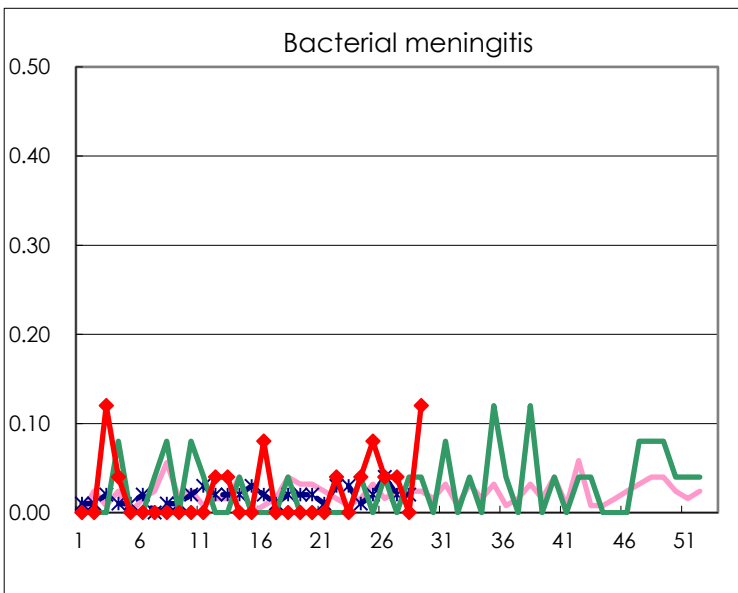
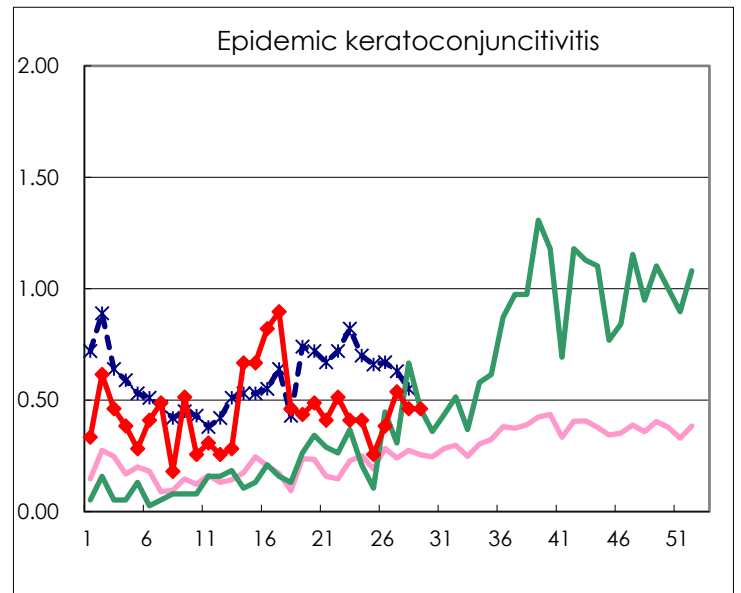
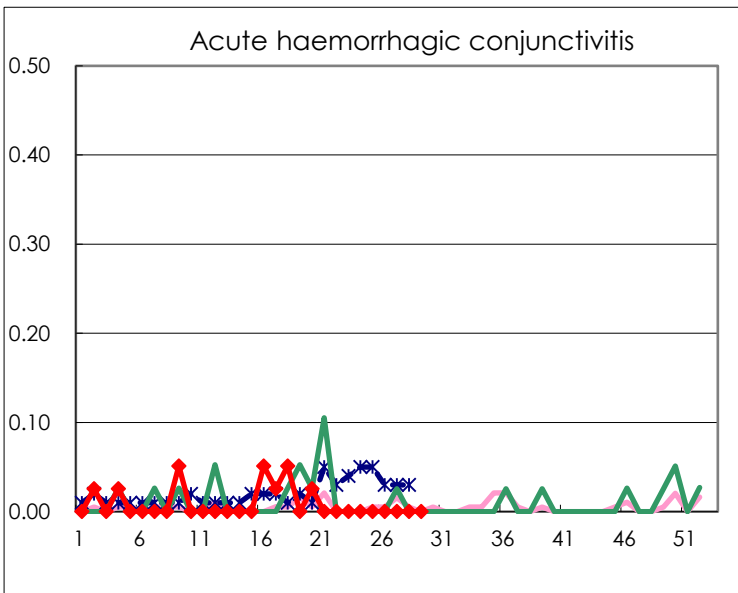
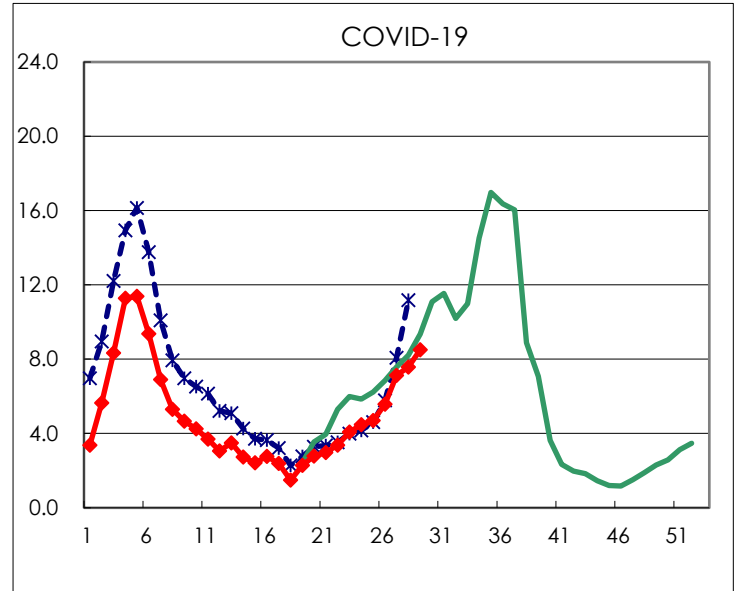
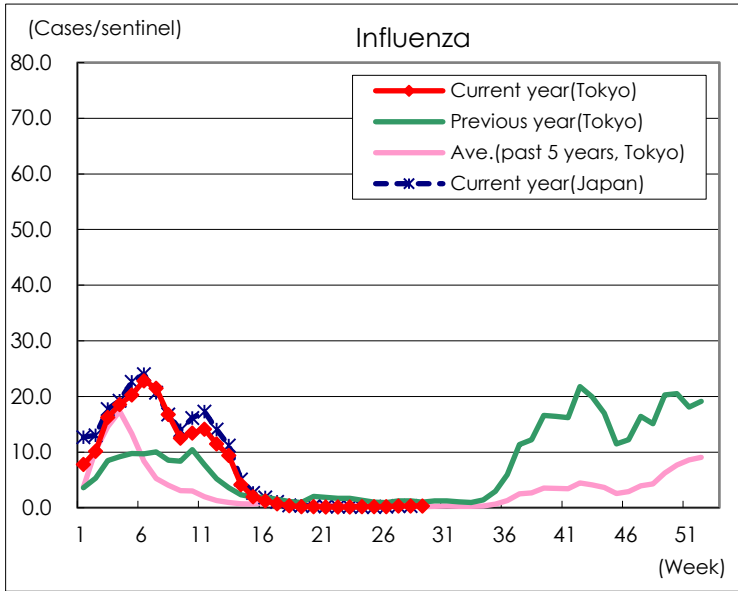
Diseases	Tokyo				
	26th	27th	28th	29th	/sentinel
Respiratory syncytial virus infection	158	125	116	97	0.37
Pharyngoconjunctival fever	127	103	99	62	0.23
Group A streptococcal pharyngitis	862	733	571	452	1.71
Infectious gastroenteritis	1,093	1,071	990	775	2.94
Chickenpox	49	49	51	38	0.14
Hand, foot, and mouth disease	2,609	3,689	4,326	3,679	13.94
Erythema infectiosum	92	99	92	113	0.43
Exanthem subitum	100	97	74	62	0.23
Herpangina	632	835	874	644	2.44
Mumps	29	38	20	14	0.05
Kawasaki disease	3	1	4	2	0.01
Cold with exanthems	21	24	11	10	0.04
Influenza	76	124	140	121	0.29
COVID-19	2,334	2,990	3,175	3,563	8.50
Acute hemorrhagic conjunctivitis					
Epidemic keratoconjunctivitis	15	21	18	18	0.46
Bacterial meningitis	1	1		3	0.12
Aseptic meningitis		1			
Mycoplasma pneumonia	6	18	39	28	1.12
Chlamydial pneumonia (excluding psittacosis)					
Infectious gastroenteritis (only by Rotavirus)					
Influenza-Associated Hospitalizations	2	4	1	2	0.08
COVID-19-Associated Hospitalizations	140	161	208	201	8.04

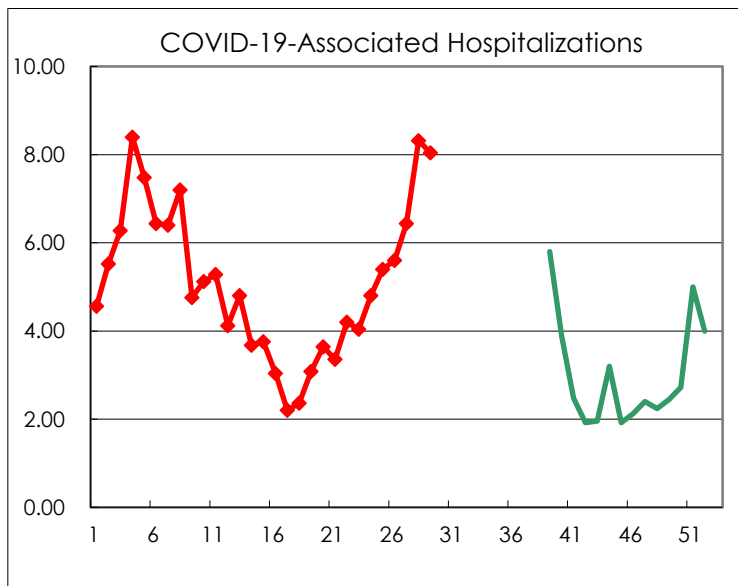
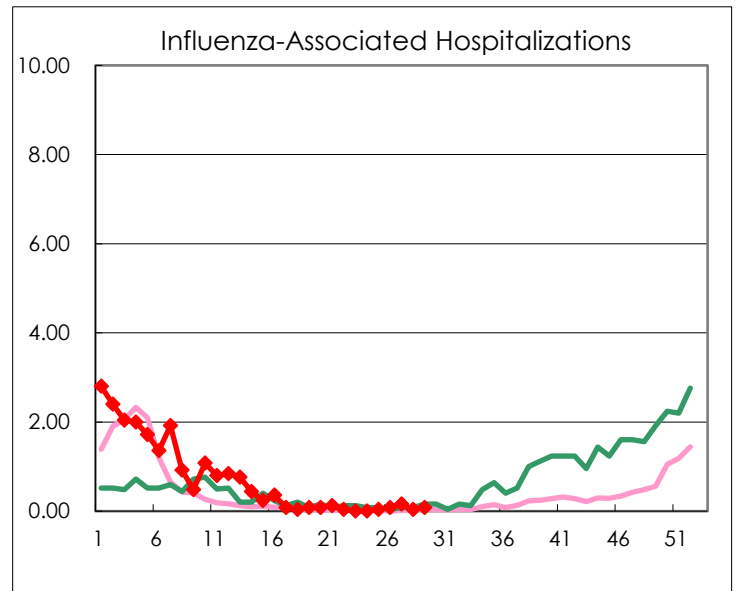
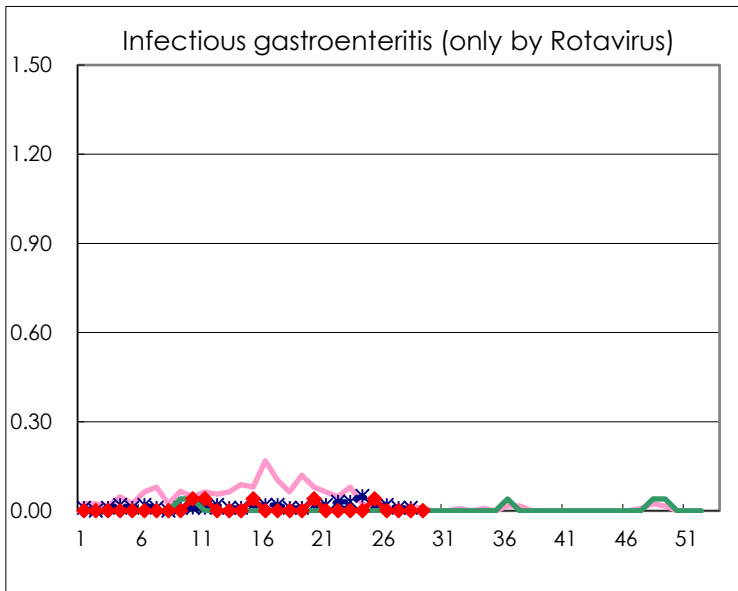
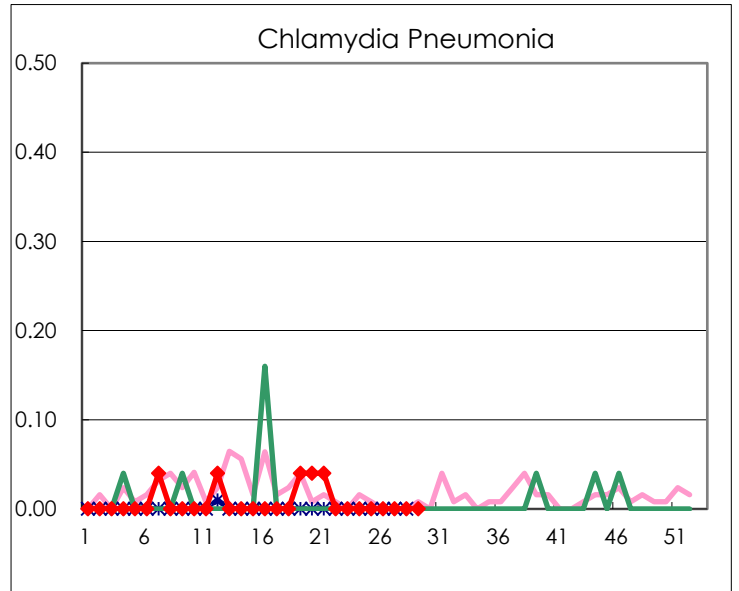
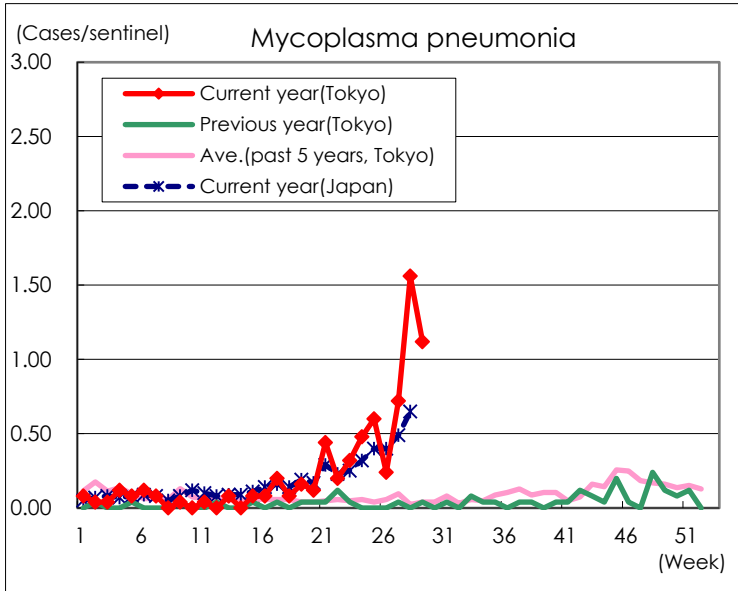
(Blank means 0.)

Disease Trend Graph (weekly reported cases per sentinel in comparison)









Number of sentinel facilities for weekly reporting		
Types of sentinels	Number of sentinels	Sentinels having reported
Pediatric	264	264
Influenza COVID-19	419	419
Ophthalmic	39	39
Specially-designated	25	25