
INFECTIOUS DISEASES WEEKLY REPORT

TOKYO iDWR

Tokyo Metropolitan Infectious Disease Surveillance Center

1 August 2024 / Number 30
(7/22 ~ 7/28)

Surveillance System in Tokyo, Japan

The infectious diseases which all physicians must report
All physicians must report to health centers the incidence of the diseases which are shown at page one. Health centers electronically report the individual cases to Tokyo Metropolitan Infectious Disease Surveillance Center.

The infectious diseases required to be reported by the sentinels
The numbers of patients who visit the sentinel clinics or hospitals during a week are reported to health centers in Tokyo. And they electronically report the numbers to Tokyo Metropolitan Infectious Disease Surveillance Center. We have about 500 sentinel clinics and hospitals in Tokyo.

Tokyo Metropolitan Institute of Public Health

TEL:81-3-3363-3213 FAX:81-3-5332-7365

e-mail:tmiph@section.metro.tokyo.jp

URL:idsc.tmiph.metro.tokyo.lg.jp/

Number of patients with the diseases which all physicians must report

Category	Diseases	Tokyo				
		27th	28th	29th	30th	Cum 2024
I	Ebola hemorrhagic fever					
	Crimean-Congo hemorrhagic fever					
	Smallpox					
	South American hemorrhagic fever					
	Plague					
	Marburg disease					
	Lassa fever					
II	Acute poliomyelitis					
	Tuberculosis	42	50	32	30	1,190
	Diphtheria					
	Severe Acute Respiratory Syndrome(SARS)					
	Middle East Respiratory Syndrome (MERS)					
	Avian influenza H5N1					
	Avian influenza H7N9					
III	Cholera					2
	Shigellosis					4
	Enterohemorrhagic Escherichia coli infection	15	14	14	15	166
	Typhoid fever	1				3
	Paratyphoid fever					2
IV	Hepatitis E	3	3	2	2	83
	West Nile fever					
	Hepatitis A			1		14
	Echinococcosis					
	Mpox					12
	Yellow fever					
	Psittacosis					
	Omsk hemorrhagic fever					
	Relapsing fever					
	Kyasanur forest disease					
	Q fever					
	Rabies					
	Coccidioidomycosis					1
	Zika virus infection					
	Severe Fever with Thrombocytopenia Syndrome					
	Hemorrhagic fever with renal syndrome					
	Western equine encephalitis					
	Tick-borne encephalitis					
	Anthrax					
	Chikungunya fever					
	Scrub typhus(Tsutsugamushi disease)					
	Dengue fever	2	1		3	35
	Eastern equine encephalitis					
	Avian influenza (excluding H5N1 and H7N9)					
	Nipah virus infection					
	Japanese spotted fever					
	Japanese encephalitis					
	Hantavirus pulmonary syndrome					
	Herpes B virus infection					
	Glanders					
	Brucellosis					
	Venezuelan equine encephalitis					
	Hendra virus infection					
Epidemic typhus						
Botulism						
Malaria			1		7	
Tularemia						
Lyme disease						
Lyssavirus infection(excluding rabies)						
Rift valley fever						
Melioidosis						
Legionellosis	6	13	7	9	103	
Leptospirosis					1	
Rocky mountain spotted fever						

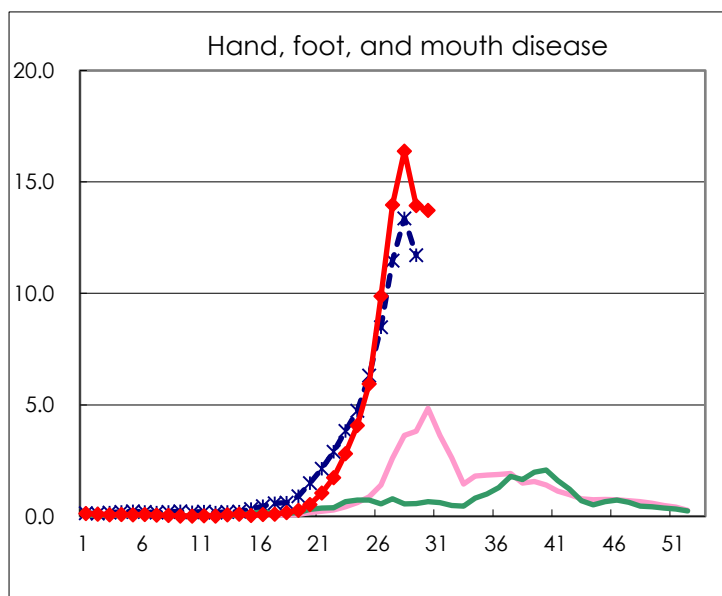
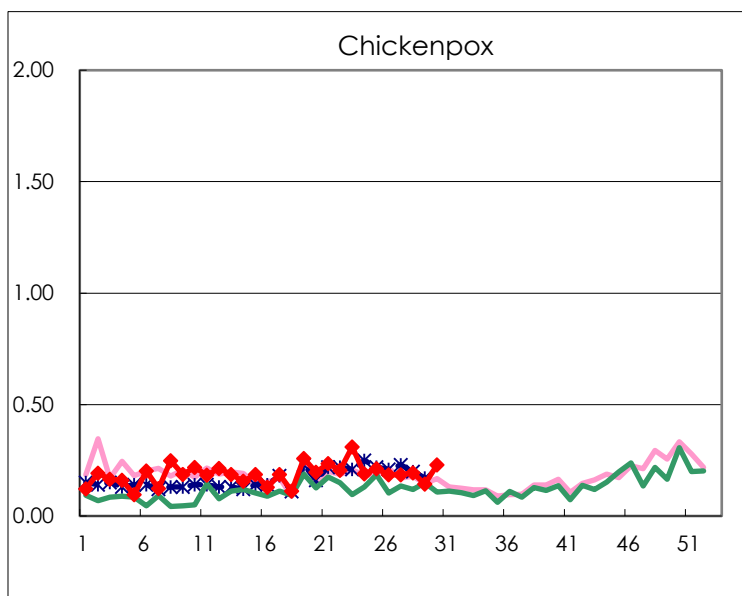
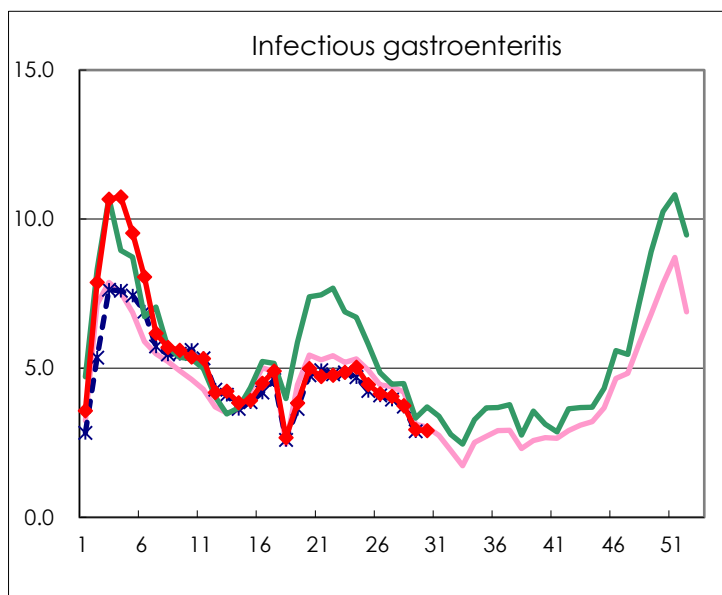
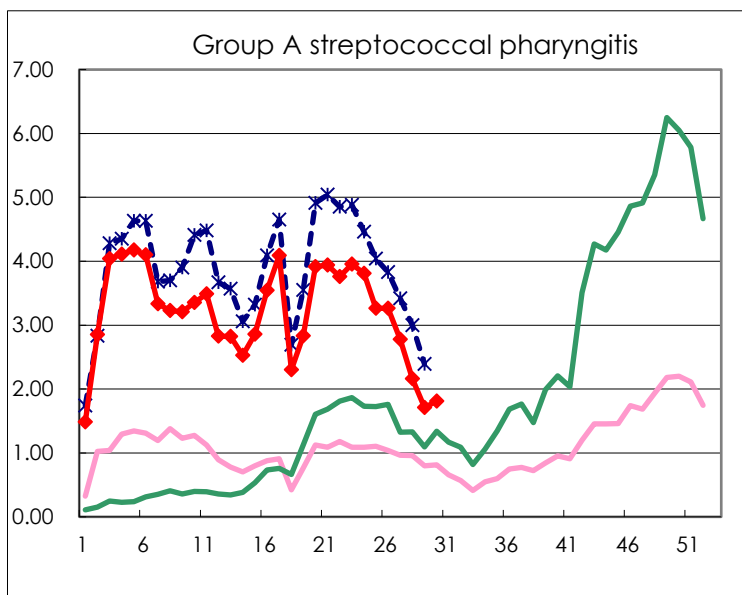
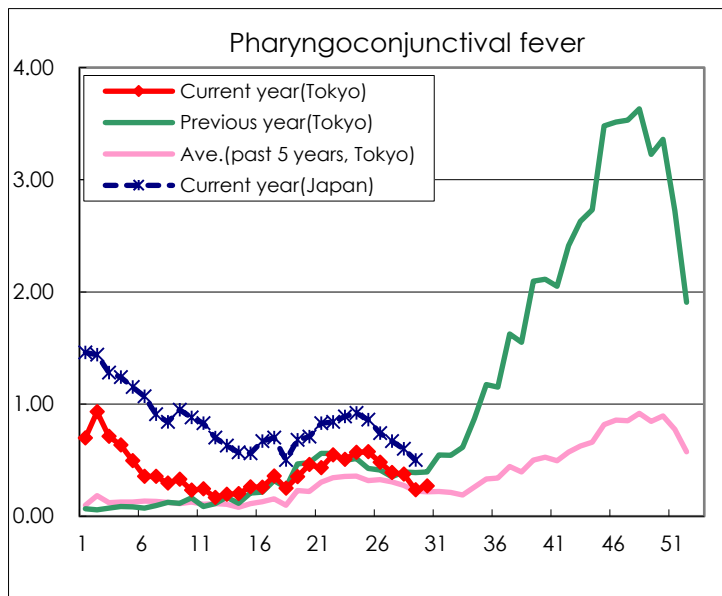
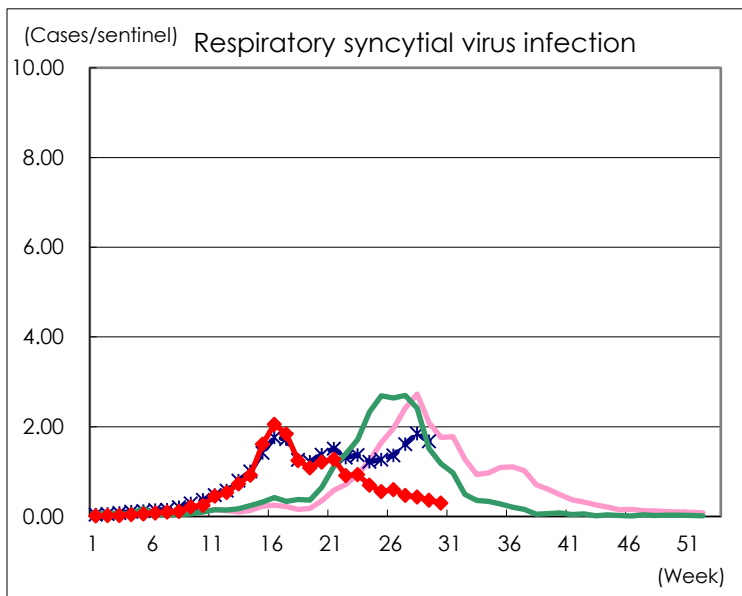
Category	Diseases	Tokyo				
		27th	28th	29th	30th	Cum 2024
V	Amebiasis	3	1	5	3	64
	Viral hepatitis(excluding hepatitis A and E)			3	3	25
	CRE infection	3	3	7		101
	Acute Flaccid Paralysis (excluding Acute poliomyelitis)	1				4
	Acute encephalitis(excluding JE and WNE)	2	2		1	28
	Cryptosporidiosis			1		6
	Creutzfeldt-Jakob disease					8
	Severe invasive streptococcal infections(TSLS)	3	3	6	4	177
	Acquired immunodeficiency syndrome (AIDS)	7	5	4	10	162
	Giardiasis			1	1	7
	Invasive <i>Haemophilus influenzae</i> disease		1	3	1	37
	Invasive meningococcal disease	1				5
	Invasive pneumococcal disease	4	3	2	2	173
	Varicella (limited to hospitalized case)	4	1			38
	Congenital rubella syndrome					
	Syphilis	85	70	70	68	2,074
	Disseminated cryptococcosis	2	1	1		16
	Tetanus					1
	Vancomycin-resistant <i>S. aureus</i> infection					
	Vancomycin-resistant <i>Enterococcus</i> infection			1		5
	Pertussis	14	2	1	6	89
Rubella	1				1	
Measles			1		8	
MDRA infection					1	

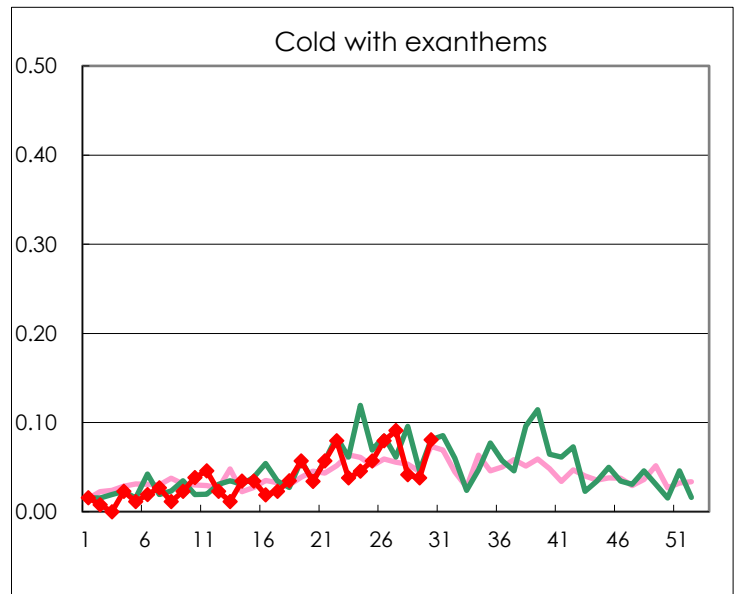
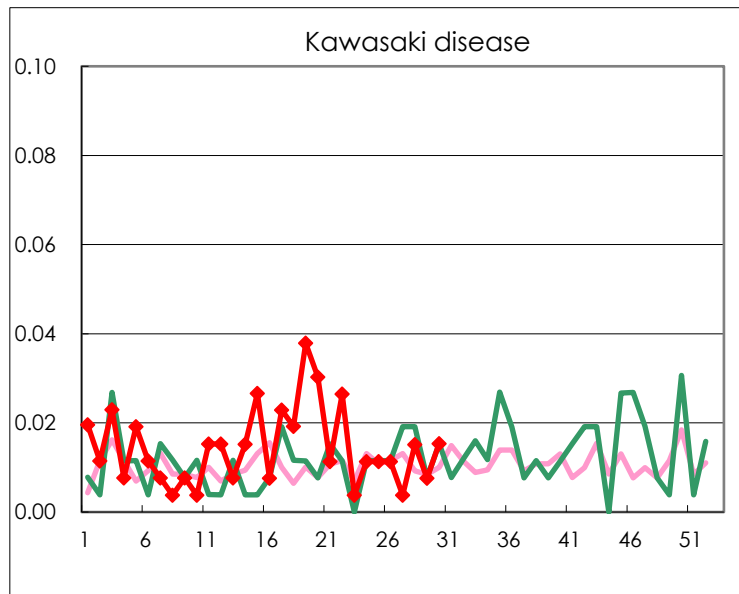
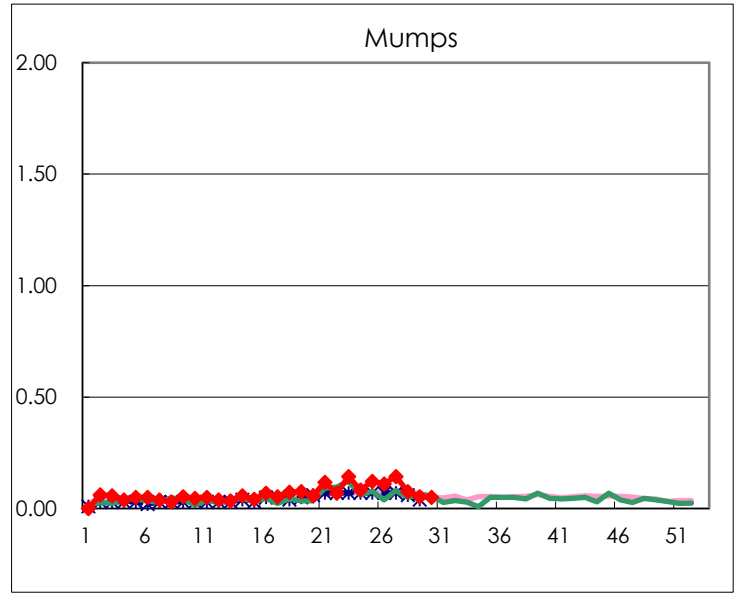
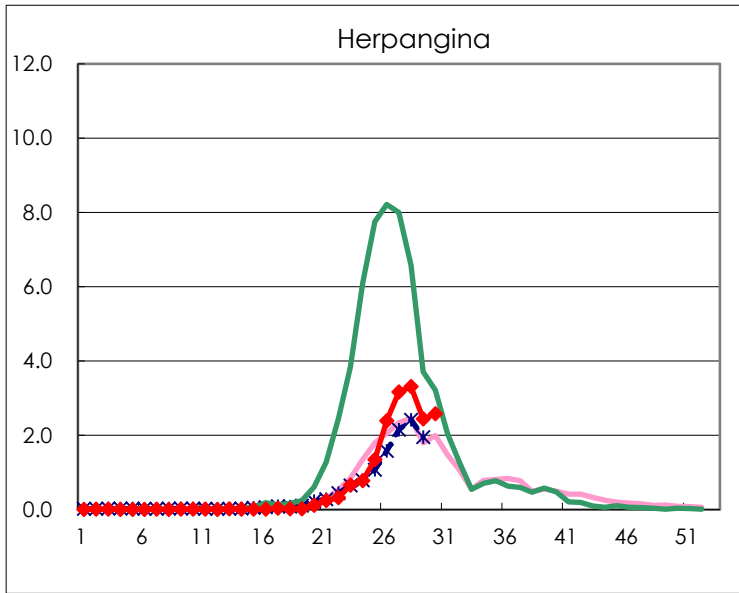
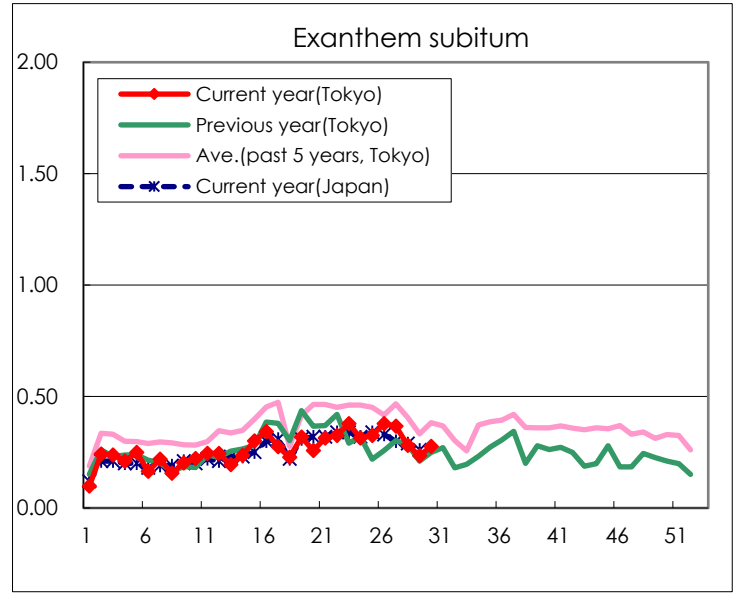
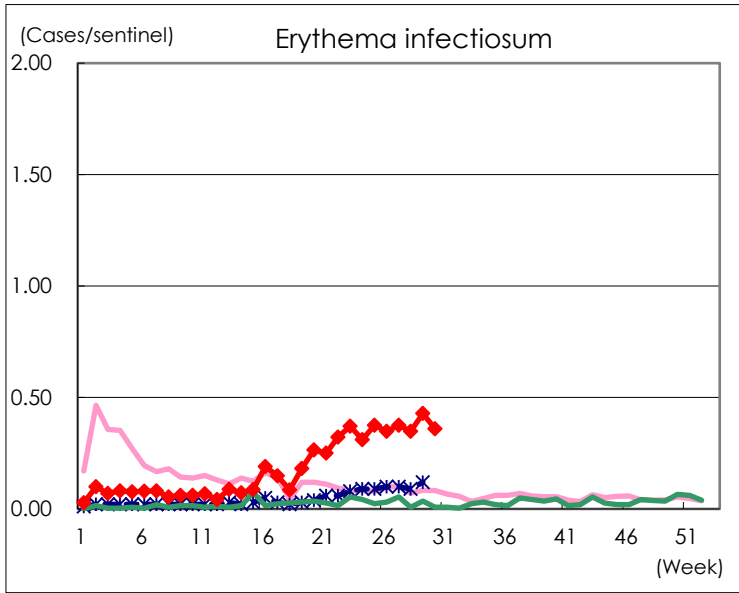
Number of patients with the diseases to be reported
by the designated clinics and hospitals

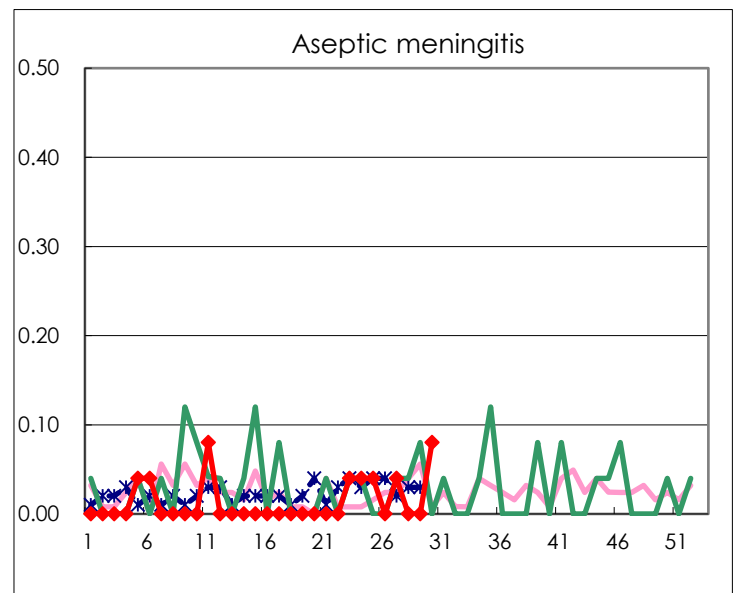
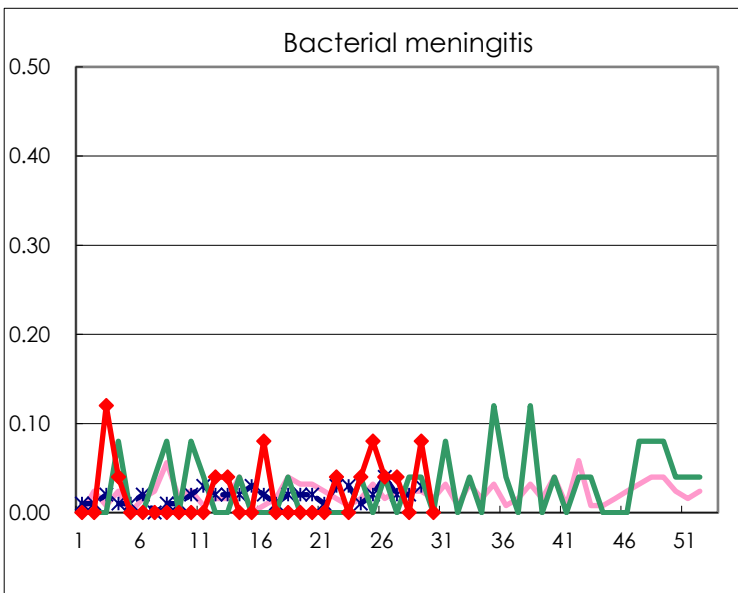
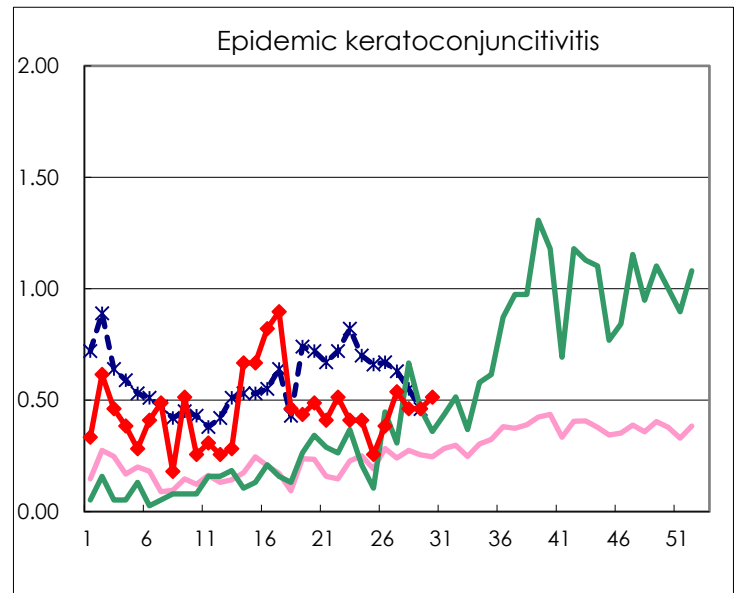
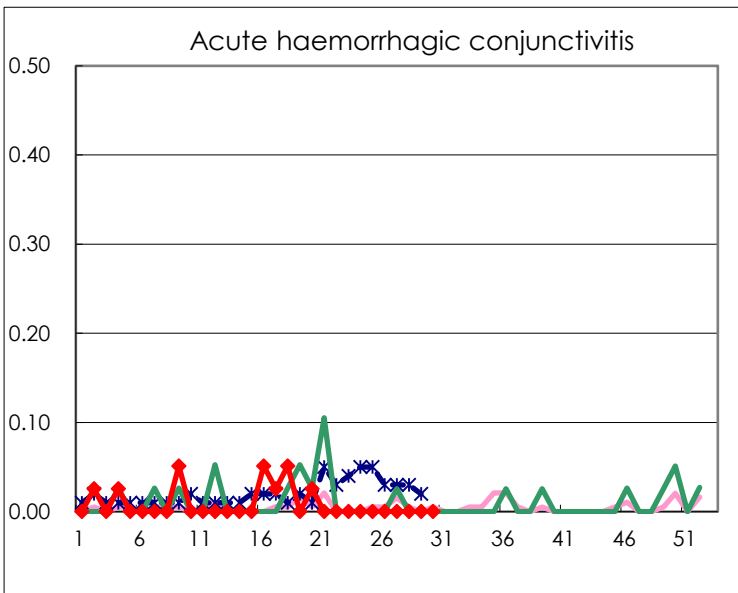
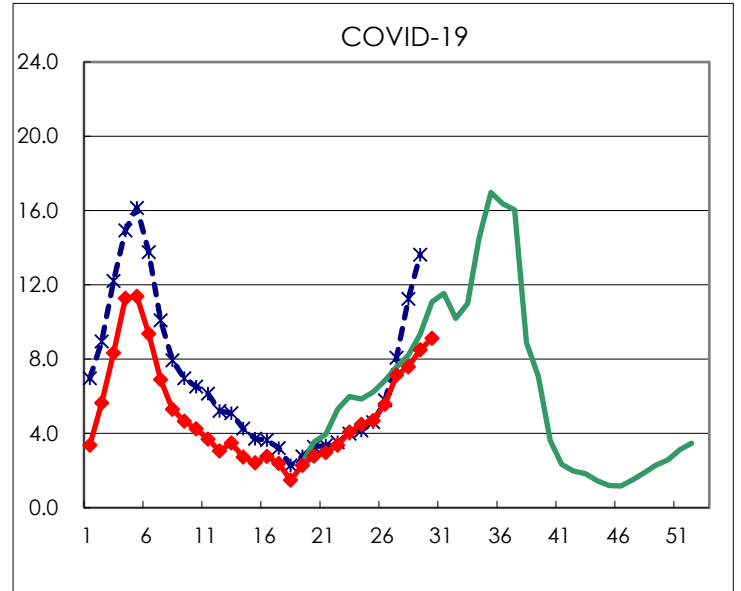
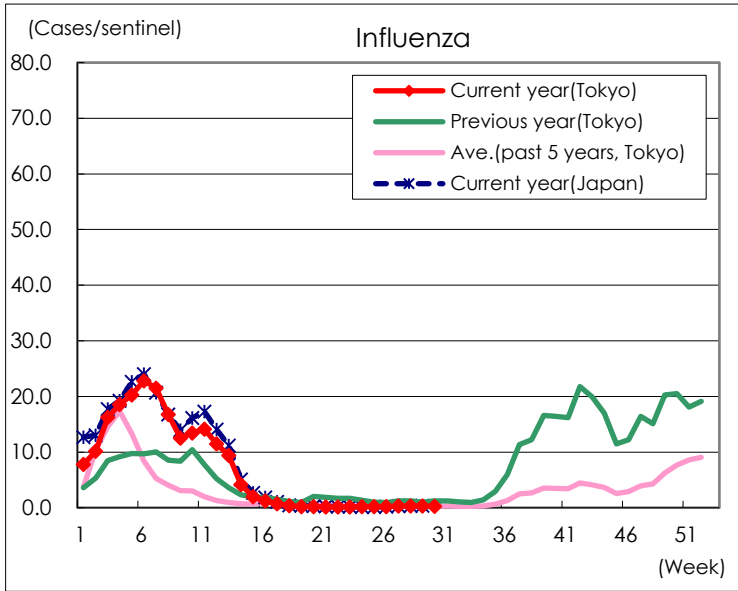
Diseases	Tokyo				
	27th	28th	29th	30th	/sentinel
Respiratory syncytial virus infection	125	116	97	78	0.30
Pharyngoconjunctival fever	103	99	62	70	0.27
Group A streptococcal pharyngitis	733	571	452	472	1.81
Infectious gastroenteritis	1,071	990	775	760	2.91
Chickenpox	49	51	38	60	0.23
Hand, foot, and mouth disease	3,689	4,326	3,679	3,582	13.72
Erythema infectiosum	99	92	113	94	0.36
Exanthem subitum	97	74	62	72	0.28
Herpangina	835	874	644	673	2.58
Mumps	38	20	14	13	0.05
Kawasaki disease	1	4	2	4	0.02
Cold with exanthems	24	11	10	21	0.08
Influenza	120	135	121	111	0.27
COVID-19	2,994	3,180	3,563	3,800	9.13
Acute hemorrhagic conjunctivitis					
Epidemic keratoconjunctivitis	21	18	18	20	0.51
Bacterial meningitis	1		2		
Aseptic meningitis	1			2	0.08
Mycoplasma pneumonia	18	39	29	27	1.08
Chlamydial pneumonia (excluding psittacosis)				1	0.04
Infectious gastroenteritis (only by Rotavirus)					
Influenza-Associated Hospitalizations	4	1	2	7	0.28
COVID-19-Associated Hospitalizations	161	208	201	237	9.48

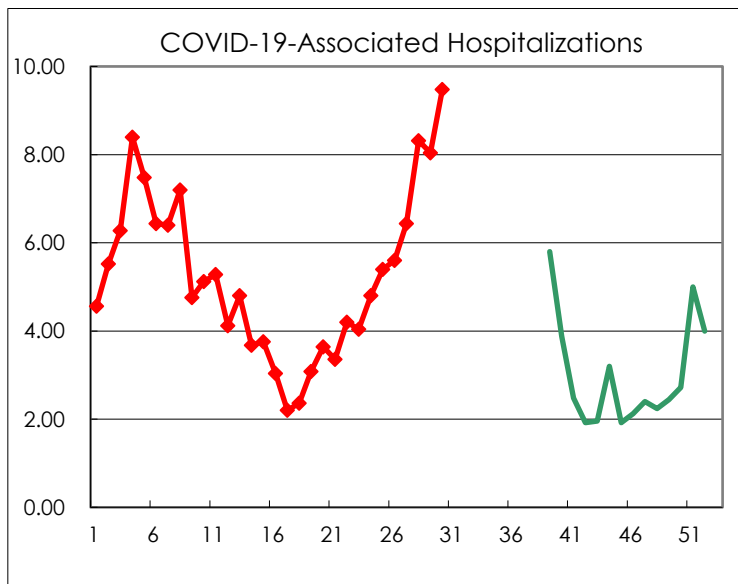
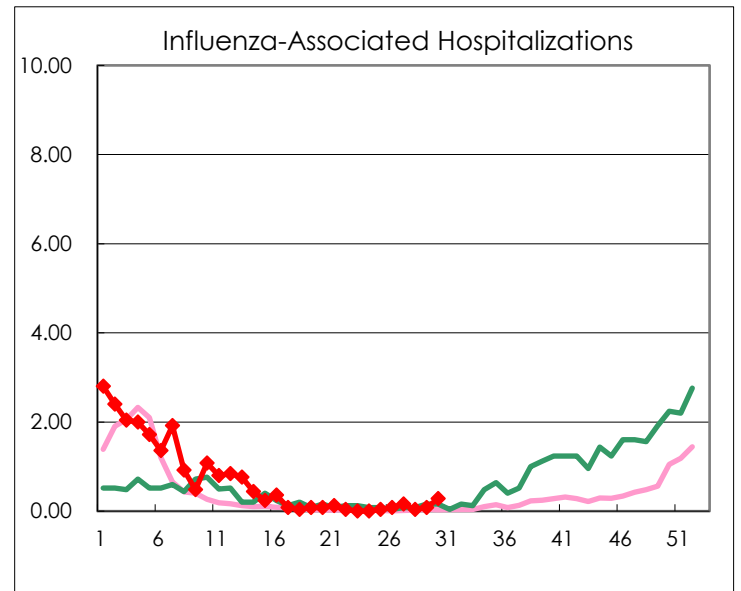
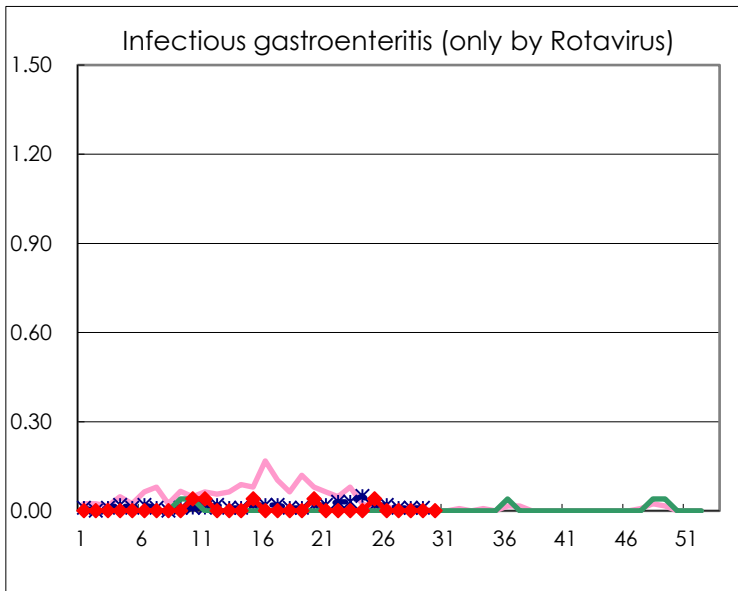
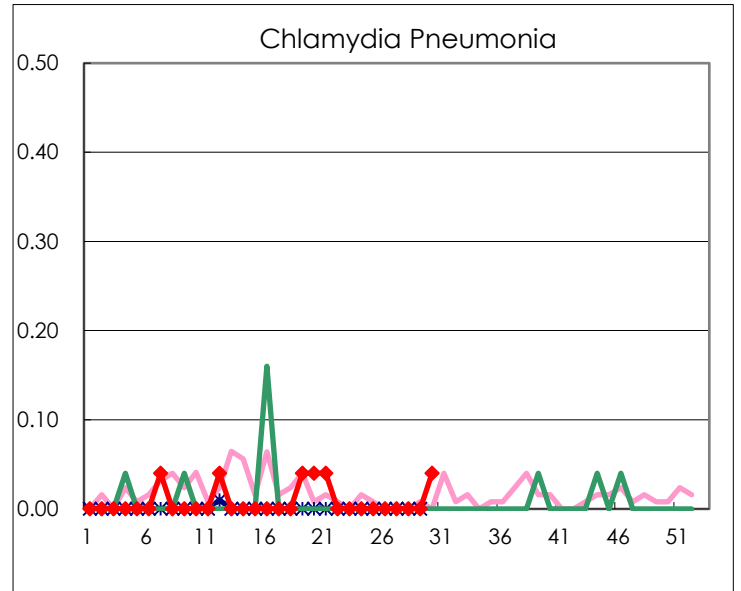
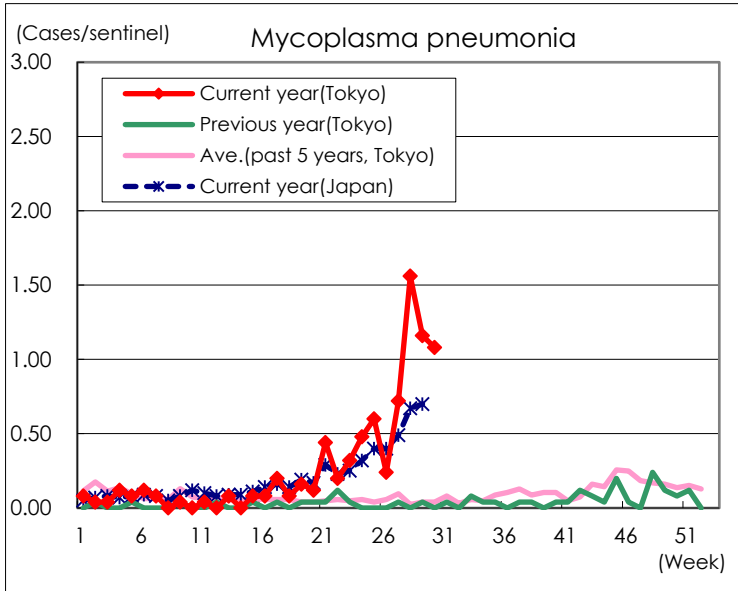
(Blank means 0.)

Disease Trend Graph (weekly reported cases per sentinel in comparison)









Number of sentinel facilities for weekly reporting		
Types of sentinels	Number of sentinels	Sentinels having reported
Pediatric	264	261
Influenza COVID-19	419	416
Ophthalmic	39	39
Specially-designated	25	25