
INFECTIOUS DISEASES WEEKLY REPORT

TOKYO IDWR

Tokyo Metropolitan Infectious Disease Surveillance Center

15 August 2024 / Number 32
(8/5 ~ 8/11)

Surveillance System in Tokyo, Japan

The infectious diseases which all physicians must report
All physicians must report to health centers the incidence of the diseases which are shown at page one. Health centers electronically report the individual cases to Tokyo Metropolitan Infectious Disease Surveillance Center.

The infectious diseases required to be reported by the sentinels
The numbers of patients who visit the sentinel clinics or hospitals during a week are reported to health centers in Tokyo. And they electronically report the numbers to Tokyo Metropolitan Infectious Disease Surveillance Center. We have about 500 sentinel clinics and hospitals in Tokyo.

Tokyo Metropolitan Institute of Public Health

TEL:81-3-3363-3213 FAX:81-3-5332-7365

e-mail:tmiph@section.metro.tokyo.jp

URL:idsc.tmiph.metro.tokyo.lg.jp/

Number of patients with the diseases which all physicians must report

Category	Diseases	Tokyo				
		29th	30th	31st	32nd	Cum 2024
I	Ebola hemorrhagic fever					
	Crimean-Congo hemorrhagic fever					
	Smallpox					
	South American hemorrhagic fever					
	Plague					
	Marburg disease					
	Lassa fever					
II	Acute poliomyelitis					
	Tuberculosis	32	30	38	51	1,284
	Diphtheria					
	Severe Acute Respiratory Syndrome(SARS)					
	Middle East Respiratory Syndrome (MERS)					
	Avian influenza H5N1					
	Avian influenza H7N9					
III	Cholera					2
	Shigellosis			2	3	9
	Enterohemorrhagic Escherichia coli infection	14	16	20	9	196
	Typhoid fever					3
	Paratyphoid fever					2
IV	Hepatitis E	2	3	1	3	89
	West Nile fever					
	Hepatitis A	1			1	15
	Echinococcosis					
	Mpox					12
	Yellow fever					
	Psittacosis					
	Omsk hemorrhagic fever					
	Relapsing fever					
	Kyasanur forest disease					
	Q fever					
	Rabies					
	Coccidioidomycosis					1
	Zika virus infection					
	Severe Fever with Thrombocytopenia Syndrome					
	Hemorrhagic fever with renal syndrome					
	Western equine encephalitis					
	Tick-borne encephalitis					
	Anthrax					
	Chikungunya fever					
	Scrub typhus(Tsutsugamushi disease)					
	Dengue fever		3	1	1	37
	Eastern equine encephalitis					
	Avian influenza (excluding H5N1 and H7N9)					
	Nipah virus infection					
	Japanese spotted fever					
	Japanese encephalitis					
	Hantavirus pulmonary syndrome					
	Herpes B virus infection					
	Glanders					
	Brucellosis					
	Venezuelan equine encephalitis					
	Hendra virus infection					
	Epidemic typhus					
	Botulism					
	Malaria	1				7
Tularemia						
Lyme disease						
Lyssavirus infection(excluding rabies)						
Rift valley fever						
Melioidosis						
Legionellosis	7	9	6	4	113	
Leptospirosis				2	3	
Rocky mountain spotted fever						

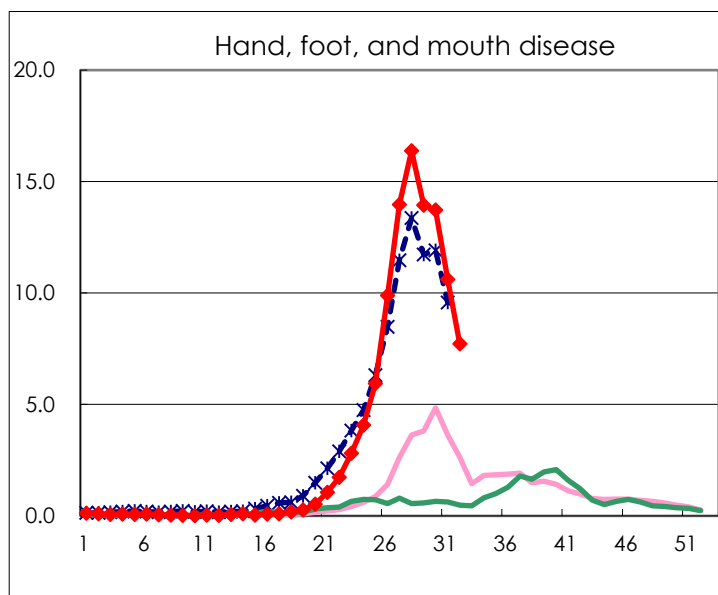
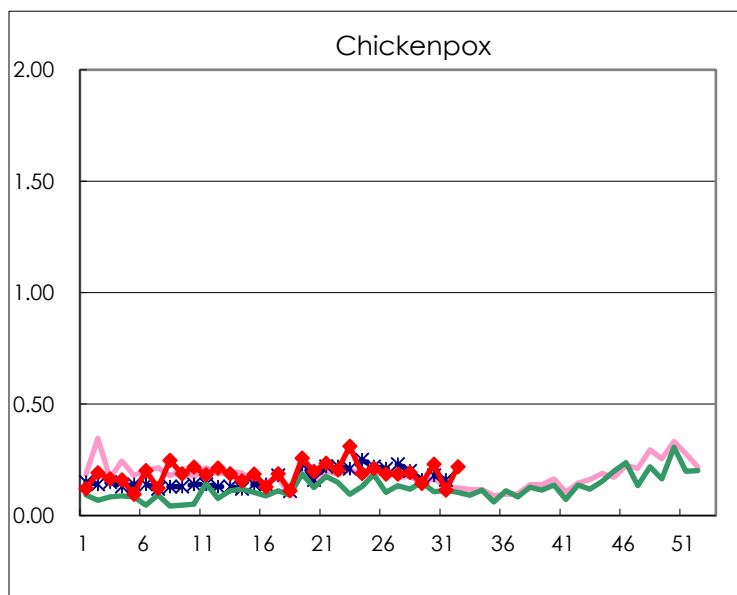
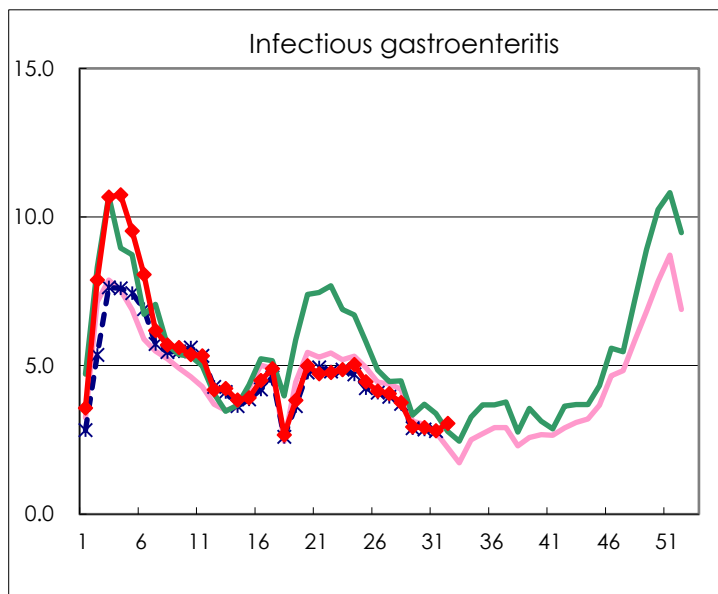
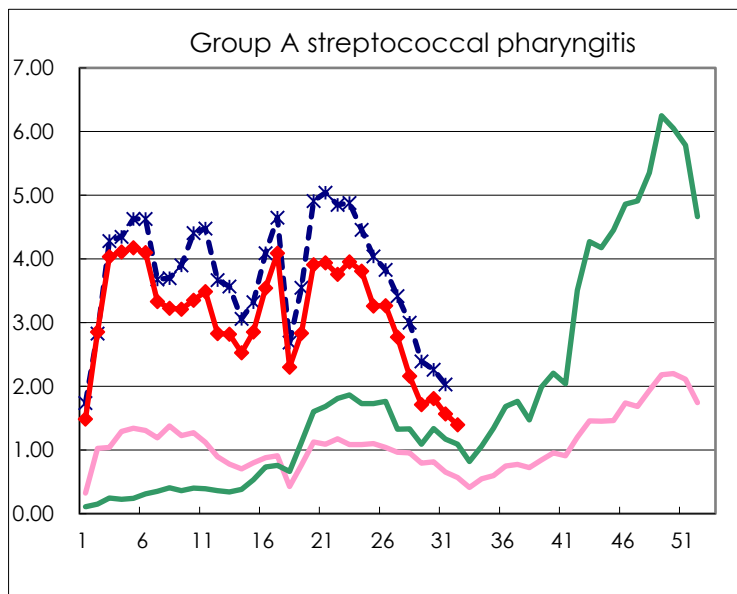
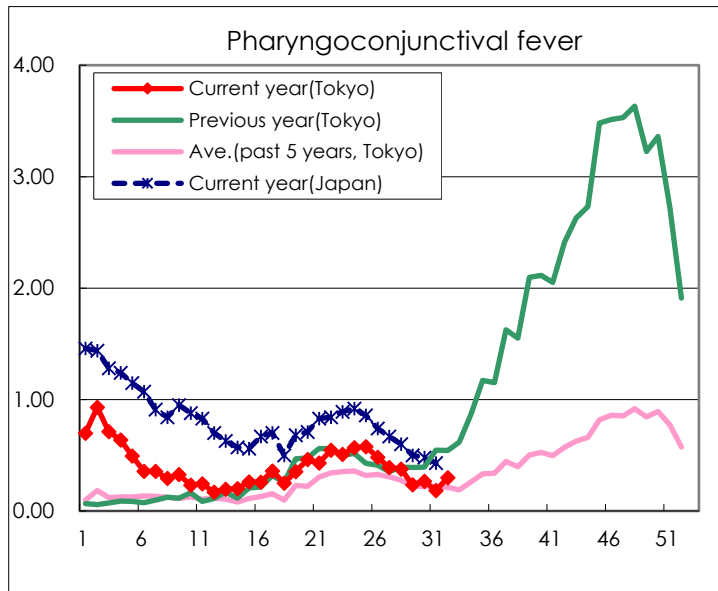
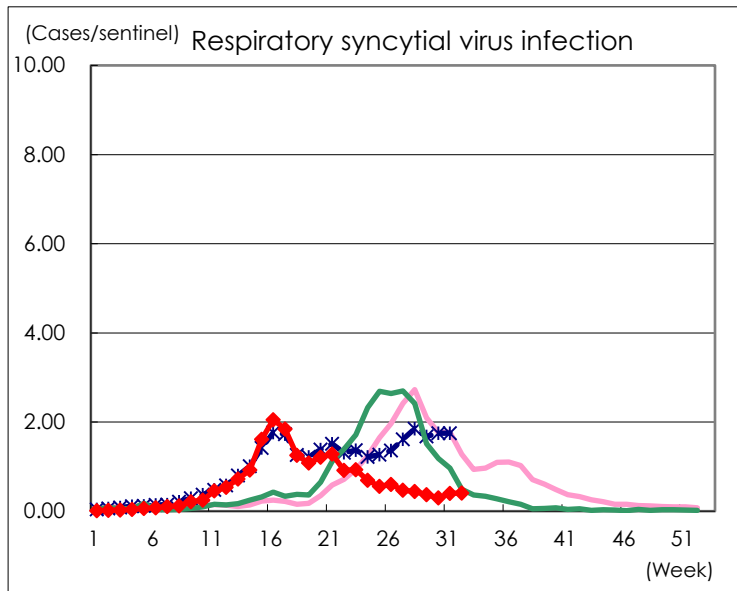
Category	Diseases	Tokyo				
		29th	30th	31st	32nd	Cum 2024
V	Amebiasis	5	3	2	1	69
	Viral hepatitis(excluding hepatitis A and E)	3	3			25
	CRE infection	7		3	3	107
	Acute Flaccid Paralysis (excluding Acute poliomyelitis)					4
	Acute encephalitis(excluding JE and WNE)		1	1		29
	Cryptosporidiosis	1				6
	Creutzfeldt-Jakob disease					8
	Severe invasive streptococcal infections(TSLS)	6	4	5	4	186
	Acquired immunodeficiency syndrome (AIDS)	4	11	6	3	172
	Giardiasis	1	1	2		9
	Invasive <i>Haemophilus influenzae</i> disease	3	1	2	1	40
	Invasive meningococcal disease			1		6
	Invasive pneumococcal disease	2	2	4	2	179
	Varicella (limited to hospitalized case)			1	2	41
	Congenital rubella syndrome					
	Syphilis	72	70	77	83	2,241
	Disseminated cryptococcosis	1				16
	Tetanus					1
	Vancomycin-resistant <i>S. aureus</i> infection					
	Vancomycin-resistant Enterococcus infection	1			1	6
	Pertussis	1	6	6	7	102
	Rubella					1
	Measles	1				8
MDRA infection					1	

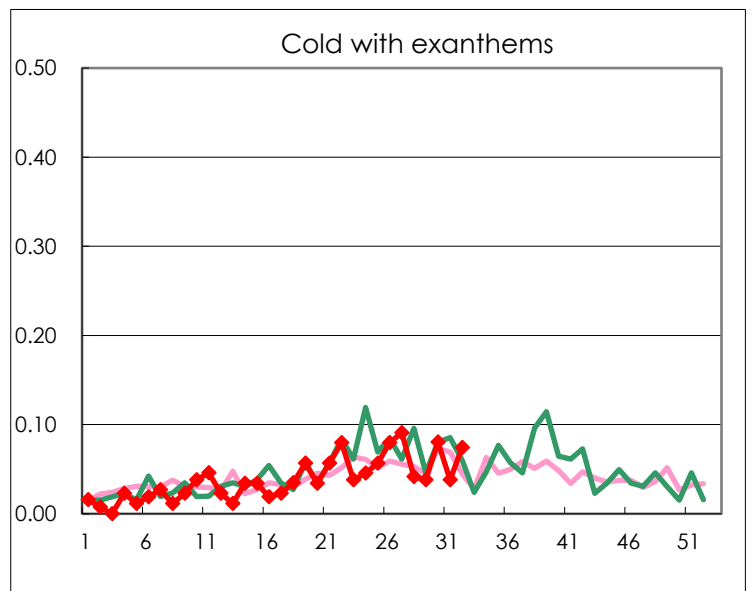
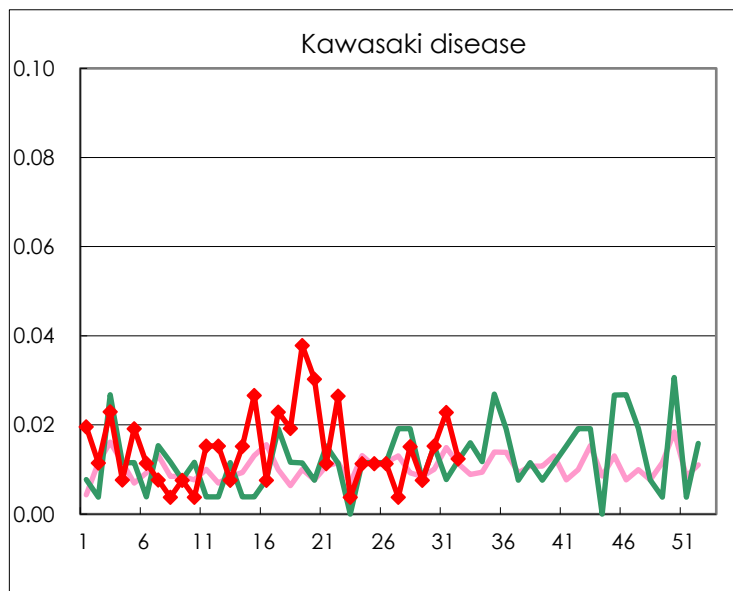
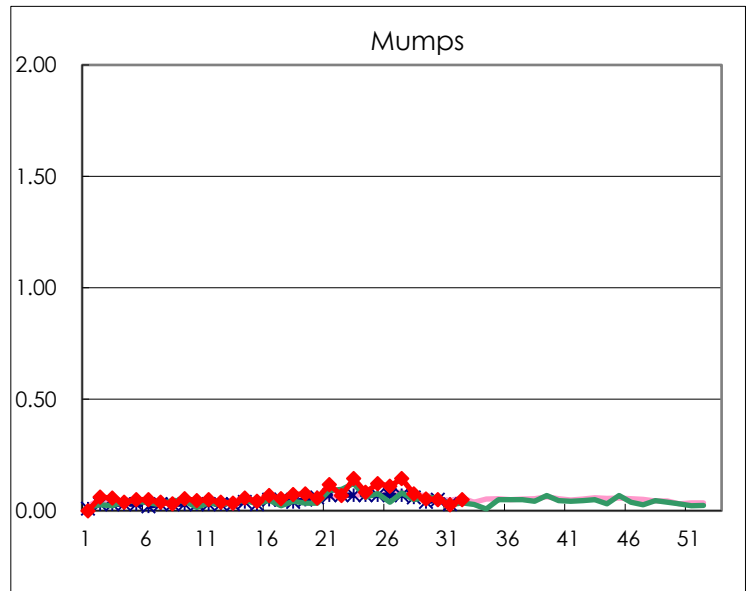
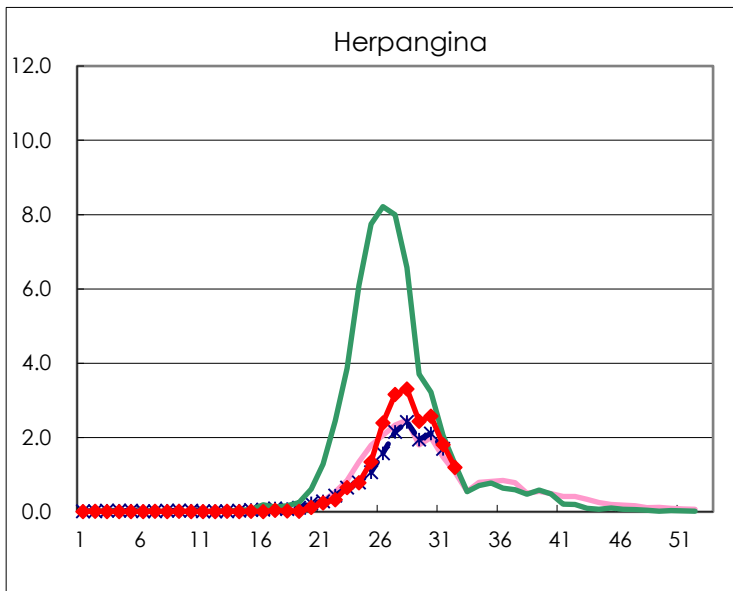
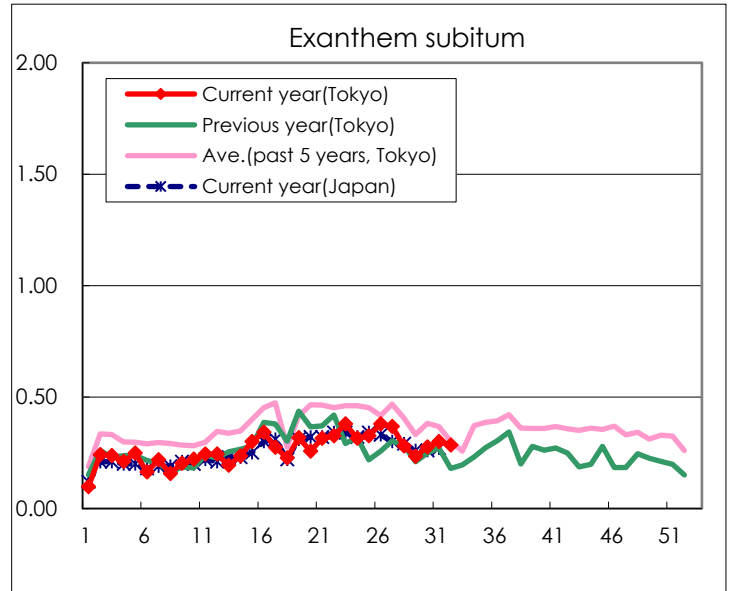
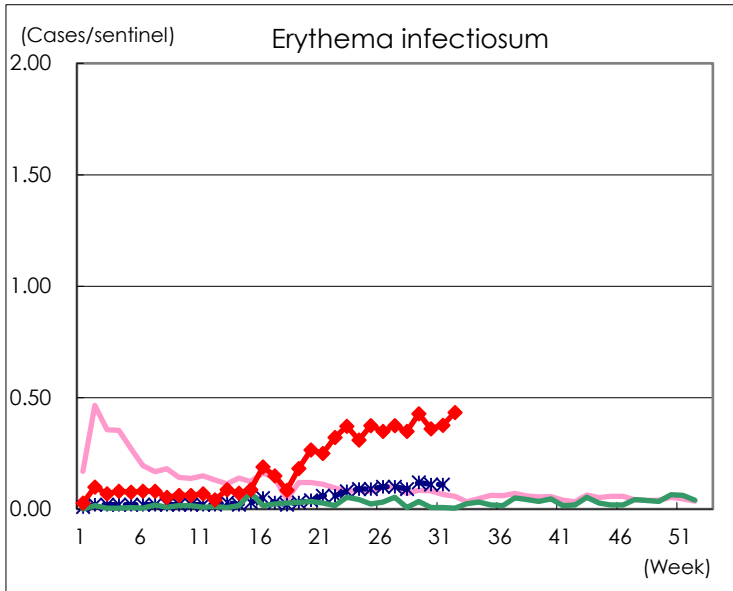
Number of patients with the diseases to be reported
by the designated clinics and hospitals

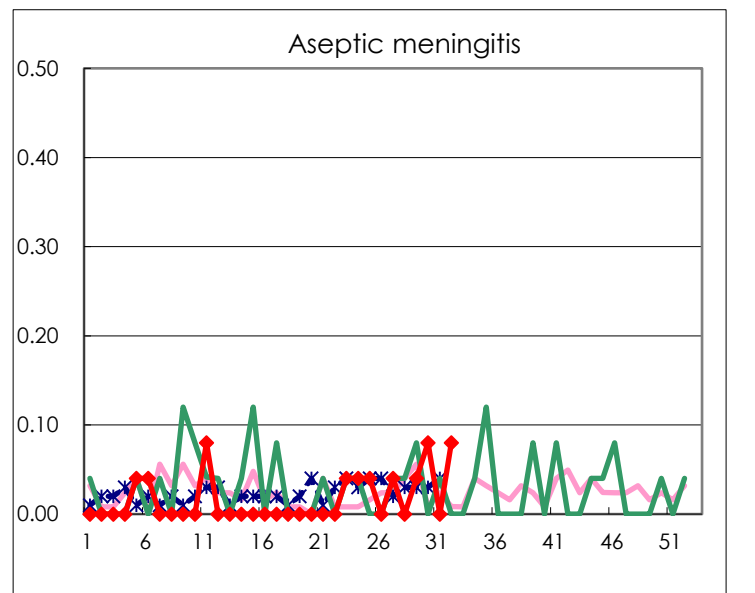
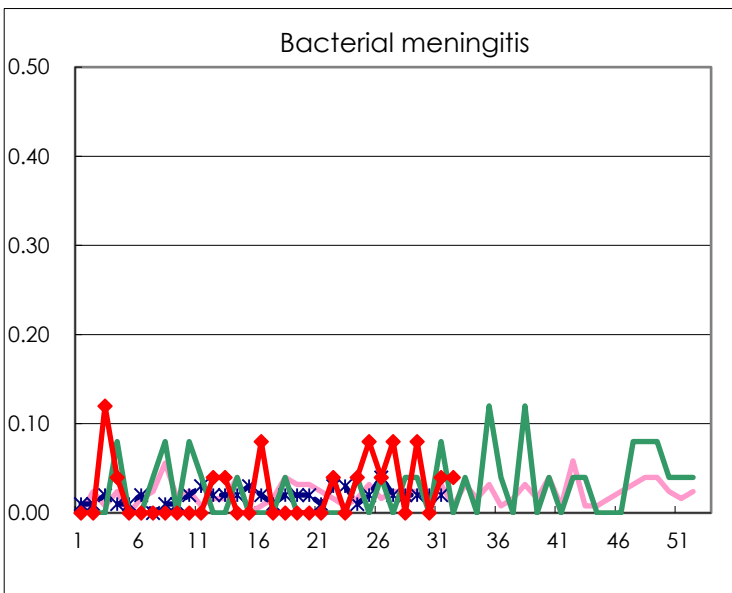
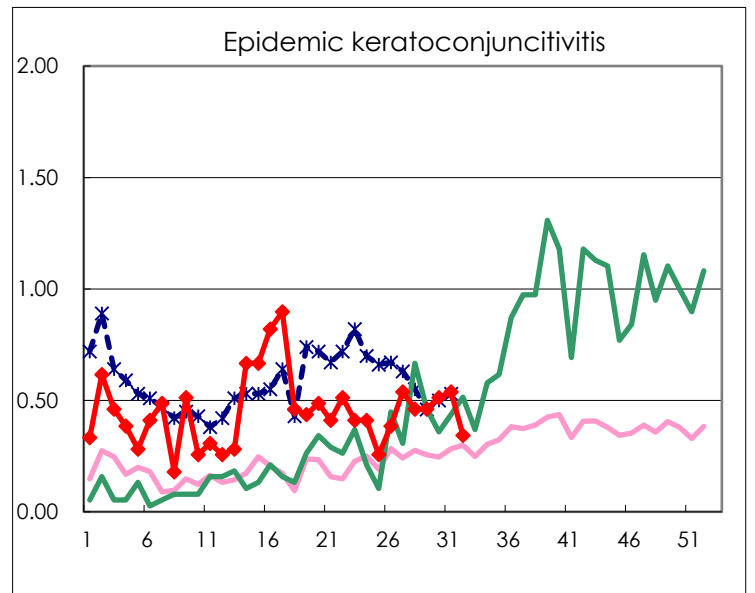
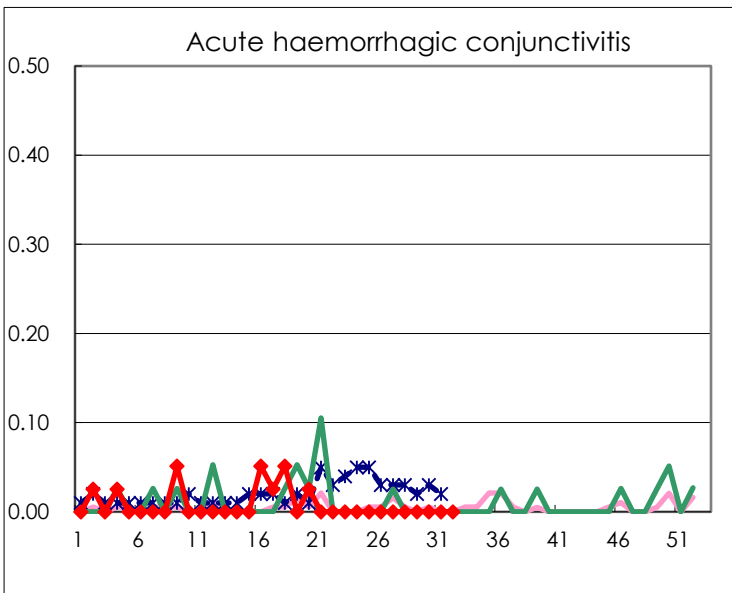
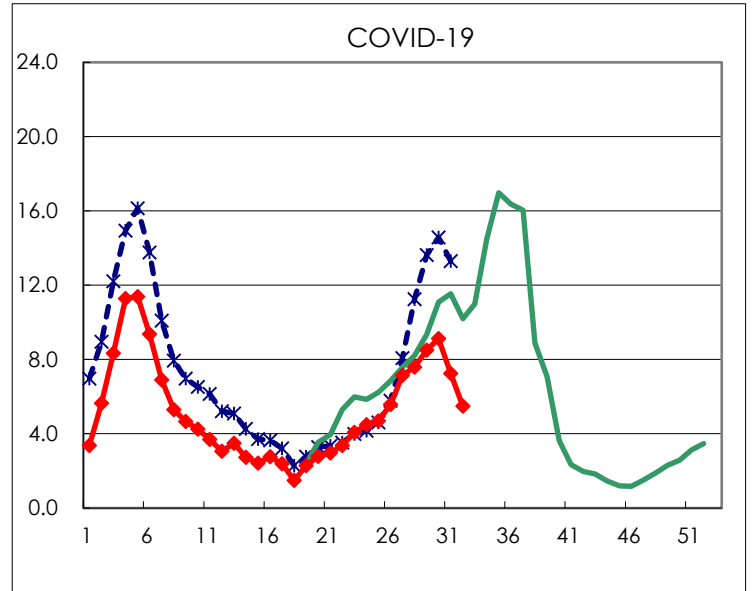
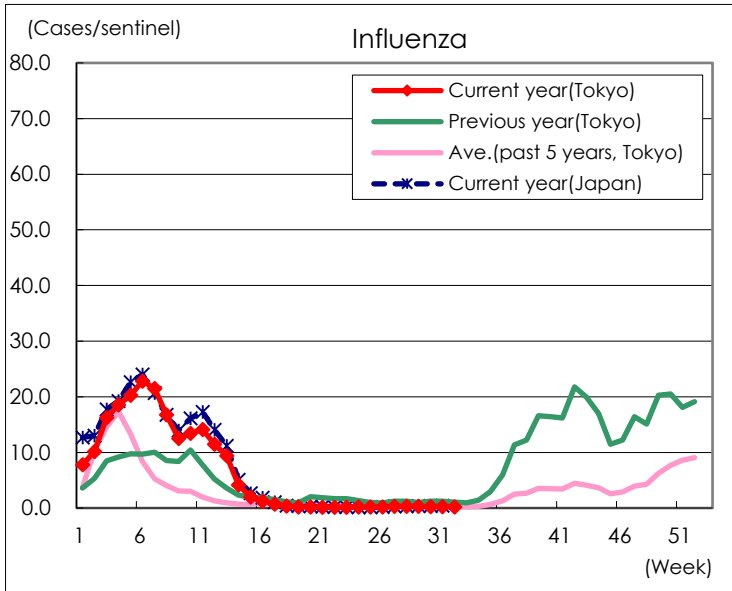
Diseases	Tokyo				
	29th	30th	31st	32nd	/sentinel
Respiratory syncytial virus infection	97	78	104	98	0.40
Pharyngoconjunctival fever	62	70	48	72	0.30
Group A streptococcal pharyngitis	452	472	413	338	1.40
Infectious gastroenteritis	775	760	737	738	3.05
Chickenpox	38	60	30	53	0.22
Hand, foot, and mouth disease	3,679	3,582	2,790	1,867	7.71
Erythema infectiosum	113	94	99	105	0.43
Exanthem subitum	62	72	79	69	0.29
Herpangina	644	673	476	289	1.19
Mumps	14	13	7	12	0.05
Kawasaki disease	2	4	6	3	0.01
Cold with exanthems	10	21	10	18	0.07
Influenza	121	111	102	79	0.21
COVID-19	3,563	3,800	3,031	2,110	5.49
Acute hemorrhagic conjunctivitis					
Epidemic keratoconjunctivitis	18	20	21	11	0.34
Bacterial meningitis	2		1	1	0.04
Aseptic meningitis	1	2		2	0.08
Mycoplasma pneumonia	29	27	37	53	2.12
Chlamydial pneumonia (excluding psittacosis)		1			
Infectious gastroenteritis (only by Rotavirus)					
Influenza-Associated Hospitalizations	2	7	3		
COVID-19-Associated Hospitalizations	201	237	204	179	7.16

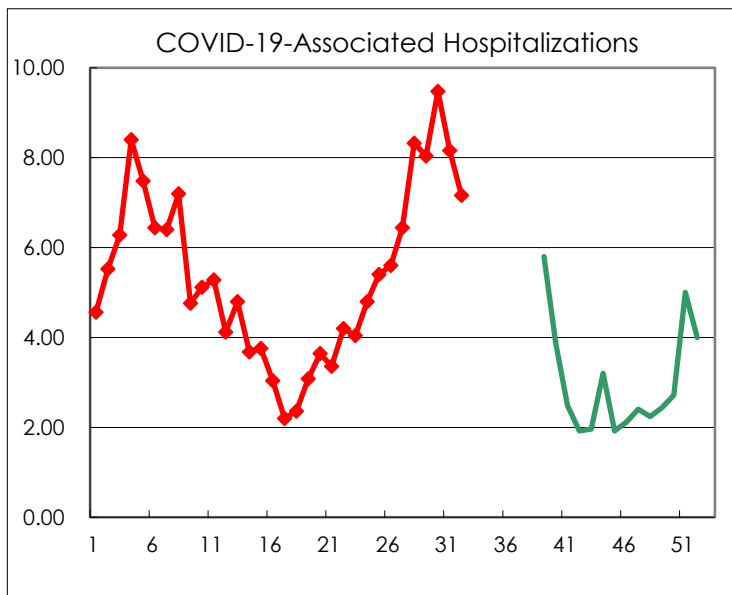
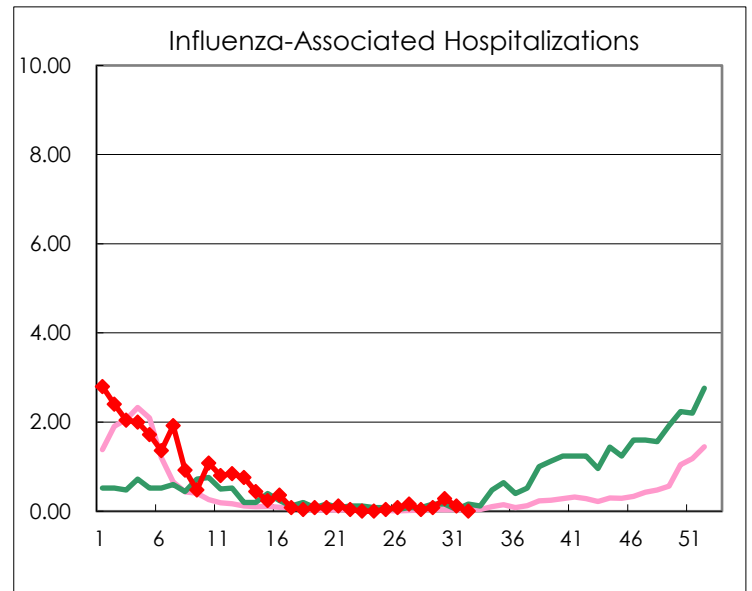
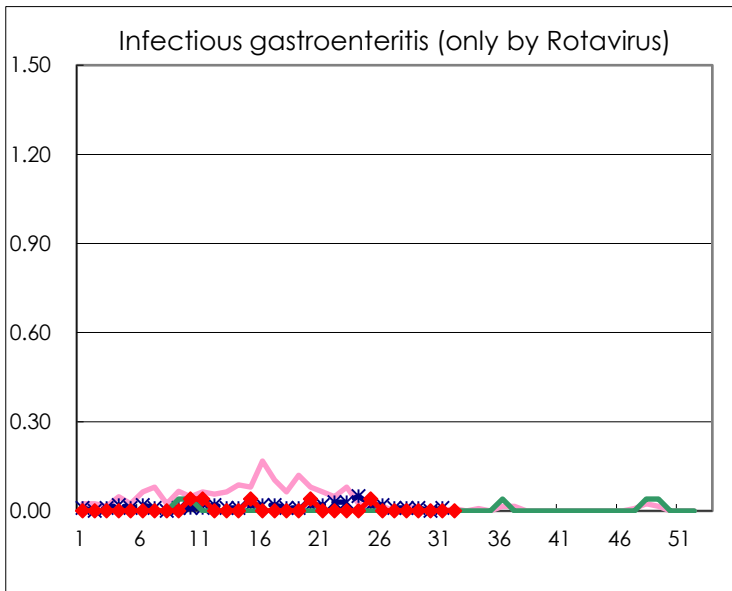
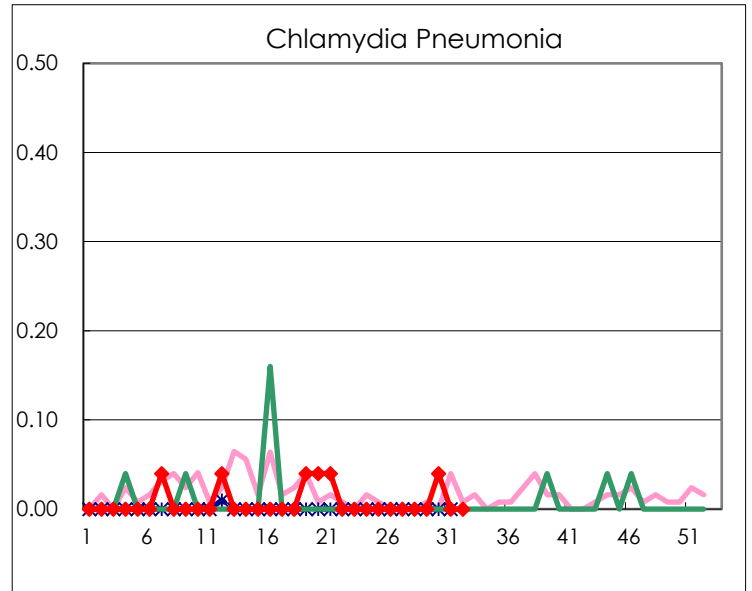
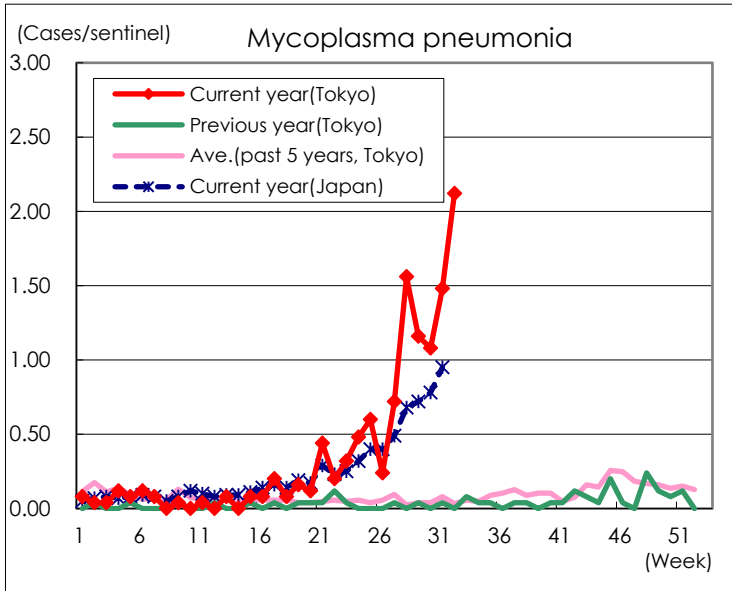
(Blank means 0.)

Disease Trend Graph (weekly reported cases per sentinel in comparison)









Number of sentinel facilities for weekly reporting		
Types of sentinels	Number of sentinels	Sentinels having reported
Pediatric	264	242
Influenza COVID-19	419	384
Ophthalmic	39	32
Specially-designated	25	25