
INFECTIOUS DISEASES WEEKLY REPORT

TOKYO iDWR

Tokyo Metropolitan Infectious Disease Surveillance Center

29 August 2024 / Number 34
(8/19 ~ 8/25)

Surveillance System in Tokyo, Japan

The infectious diseases which all physicians must report
All physicians must report to health centers the incidence of the diseases which are shown at page one. Health centers electronically report the individual cases to Tokyo Metropolitan Infectious Disease Surveillance Center.

The infectious diseases required to be reported by the sentinels
The numbers of patients who visit the sentinel clinics or hospitals during a week are reported to health centers in Tokyo. And they electronically report the numbers to Tokyo Metropolitan Infectious Disease Surveillance Center. We have about 500 sentinel clinics and hospitals in Tokyo.

Tokyo Metropolitan Institute of Public Health

TEL:81-3-3363-3213 FAX:81-3-5332-7365

e-mail:tmiph@section.metro.tokyo.jp

URL:idsc.tmiph.metro.tokyo.lg.jp/

Number of patients with the diseases which all physicians must report

Category	Diseases	Tokyo				
		31st	32nd	33rd	34th	Cum 2024
I	Ebola hemorrhagic fever					
	Crimean-Congo hemorrhagic fever					
	Smallpox					
	South American hemorrhagic fever					
	Plague					
	Marburg disease					
	Lassa fever					
II	Acute poliomyelitis					
	Tuberculosis	40	55	27	39	1,357
	Diphtheria					
	Severe Acute Respiratory Syndrome(SARS)					
	Middle East Respiratory Syndrome (MERS)					
	Avian influenza H5N1					
	Avian influenza H7N9					
III	Cholera					2
	Shigellosis	2	4	1	1	12
	Enterohemorrhagic Escherichia coli infection	20	9	19	27	245
	Typhoid fever					3
	Paratyphoid fever					2
IV	Hepatitis E	1	3	2	2	93
	West Nile fever					
	Hepatitis A		1			15
	Echinococcosis					
	Mpox					12
	Yellow fever					
	Psittacosis					
	Omsk hemorrhagic fever					
	Relapsing fever					
	Kyasanur forest disease					
	Q fever					
	Rabies					
	Coccidioidomycosis					1
	Zika virus infection					
	Severe Fever with Thrombocytopenia Syndrome					
	Hemorrhagic fever with renal syndrome					
	Western equine encephalitis					
	Tick-borne encephalitis					
	Anthrax					
	Chikungunya fever					
	Scrub typhus(Tsutsugamushi disease)					
	Dengue fever	1	1	2	2	41
	Eastern equine encephalitis					
	Avian influenza (excluding H5N1 and H7N9)					
	Nipah virus infection					
	Japanese spotted fever					
	Japanese encephalitis					
	Hantavirus pulmonary syndrome					
	Herpes B virus infection					
	Glanders					
	Brucellosis					
	Venezuelan equine encephalitis					
	Hendra virus infection					
	Epidemic typhus					
	Botulism					
	Malaria				1	8
	Tularemia					
	Lyme disease					
	Lyssavirus infection(excluding rabies)					
	Rift valley fever					
Melioidosis						
Legionellosis	6	4	1	2	116	
Leptospirosis		2			3	
Rocky mountain spotted fever						

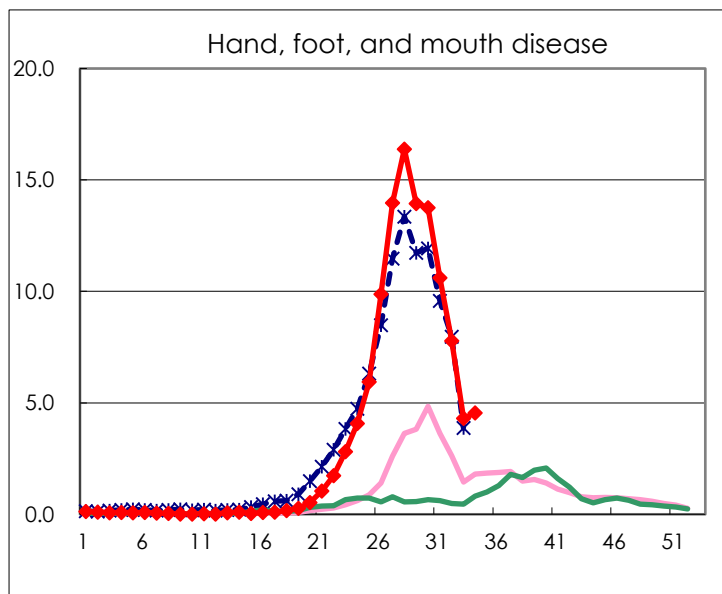
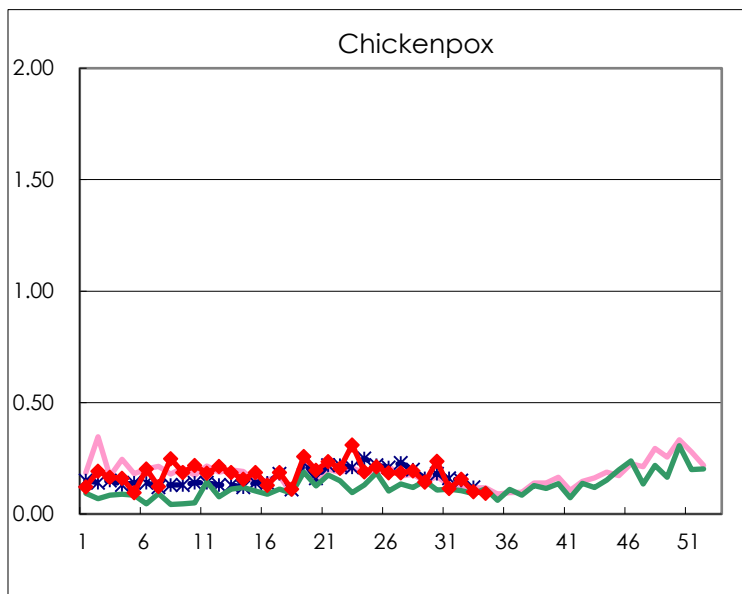
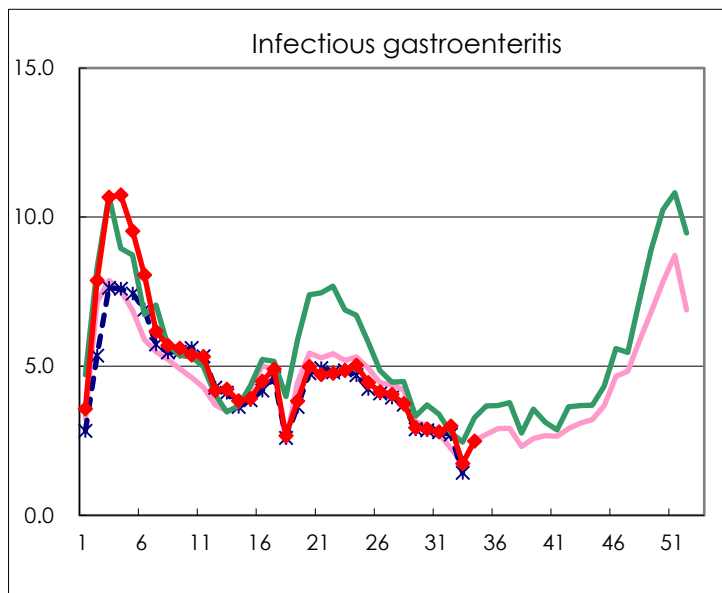
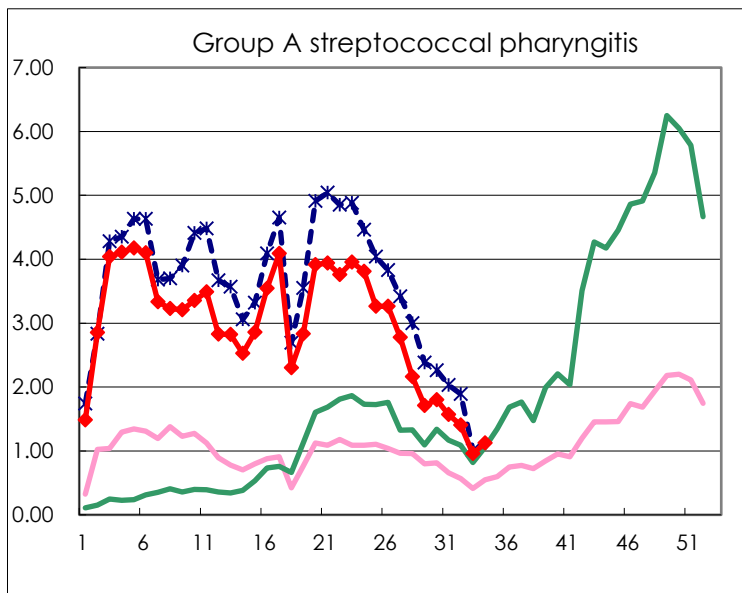
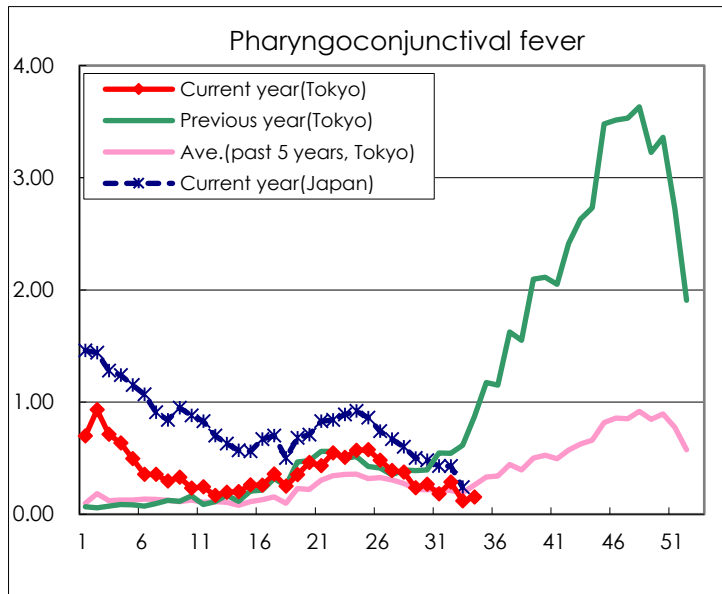
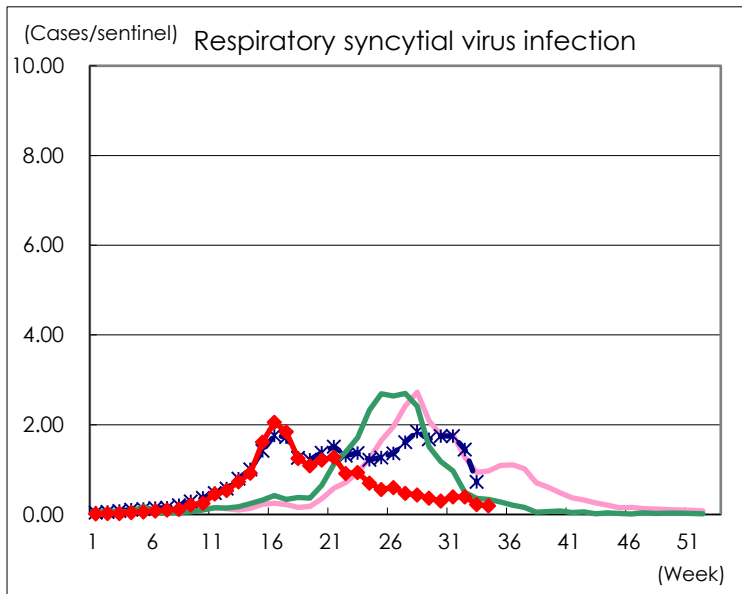
Category	Diseases	Tokyo				
		31st	32nd	33rd	34th	Cum 2024
V	Amebiasis	2	1	1	3	73
	Viral hepatitis(excluding hepatitis A and E)			1		26
	CRE infection	3	3	1	5	115
	Acute Flaccid Paralysis (excluding Acute poliomyelitis)					4
	Acute encephalitis(excluding JE and WNE)	1			1	30
	Cryptosporidiosis					6
	Creutzfeldt-Jakob disease					8
	Severe invasive streptococcal infections(TSLS)	5	5		5	192
	Acquired immunodeficiency syndrome (AIDS)	6	3	6	5	183
	Giardiasis	2				9
	Invasive <i>Haemophilus influenzae</i> disease	2	1	4		44
	Invasive meningococcal disease	1				6
	Invasive pneumococcal disease	4	3	2	4	187
	Varicella (limited to hospitalized case)	1	2	1	3	46
	Congenital rubella syndrome					
	Syphilis	78	86	56	77	2,381
	Disseminated cryptococcosis					16
	Tetanus					1
	Vancomycin-resistant <i>S. aureus</i> infection					
	Vancomycin-resistant <i>Enterococcus</i> infection		1			6
	Pertussis	6	7	12	13	127
	Rubella					1
	Measles					8
MDRA infection					1	

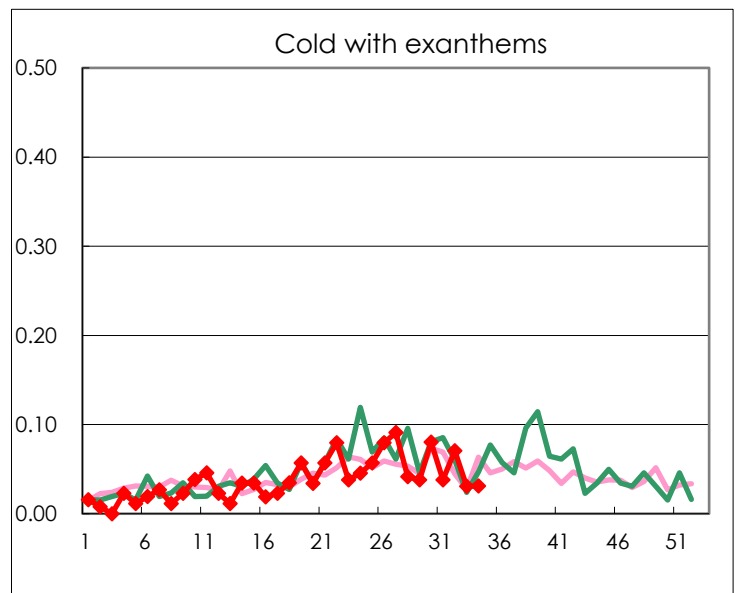
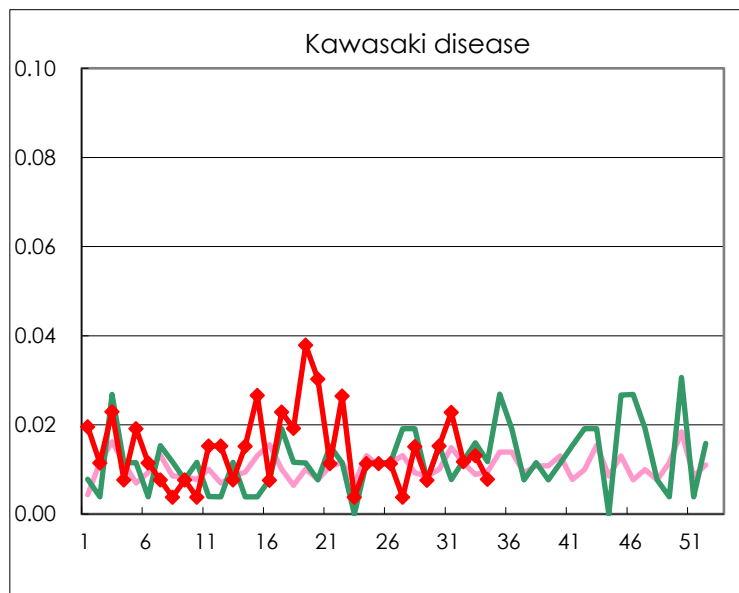
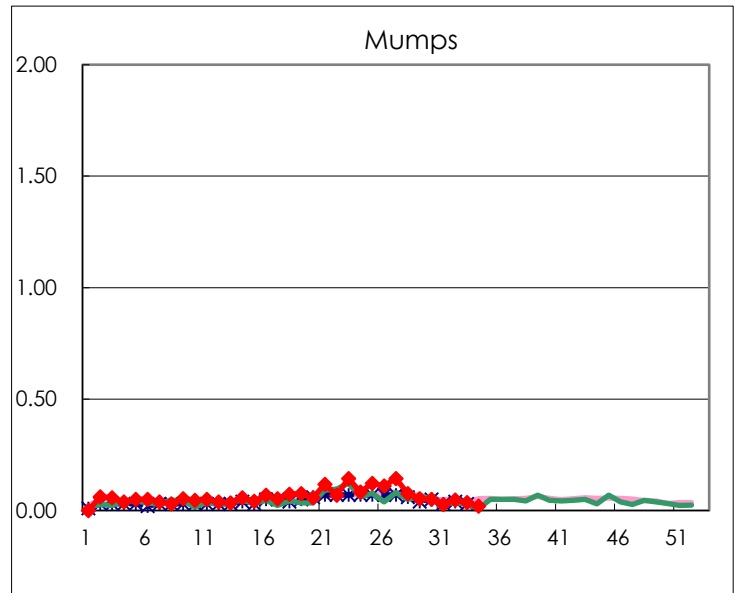
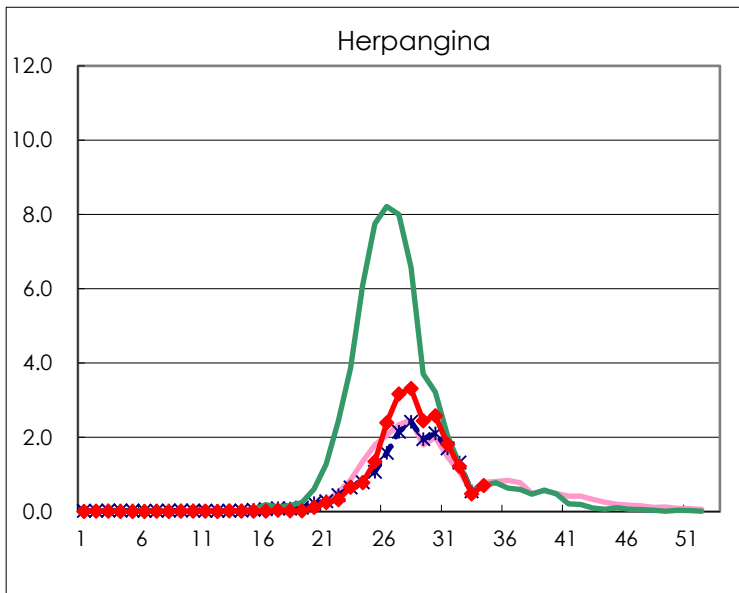
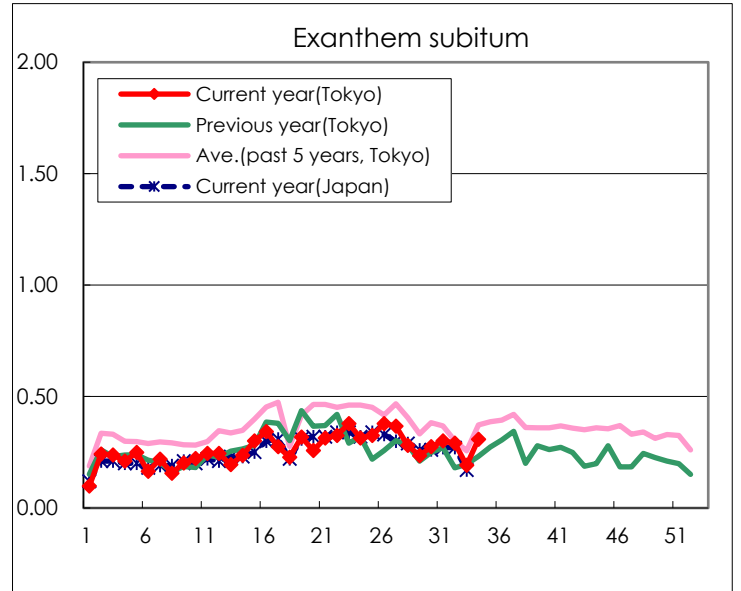
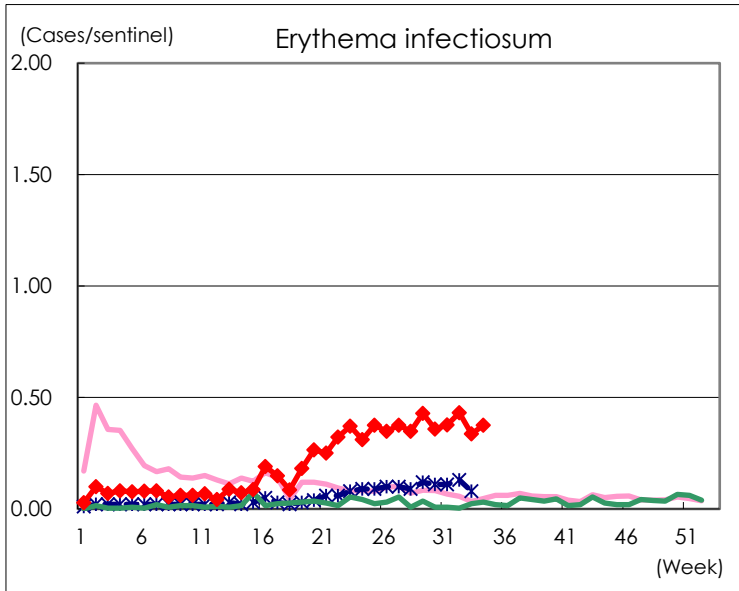
Number of patients with the diseases to be reported
by the designated clinics and hospitals

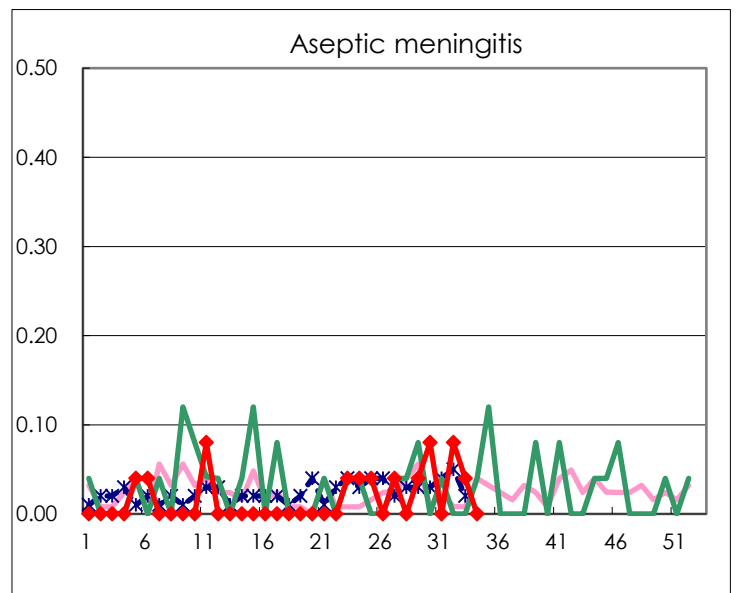
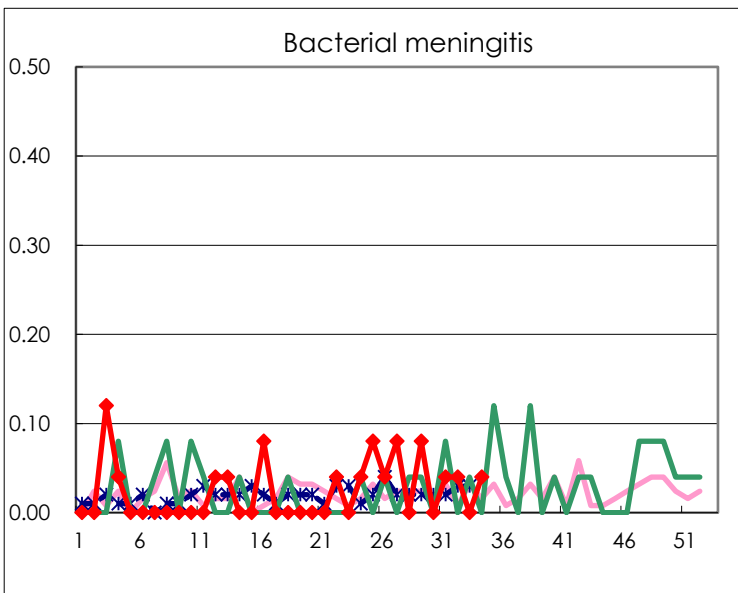
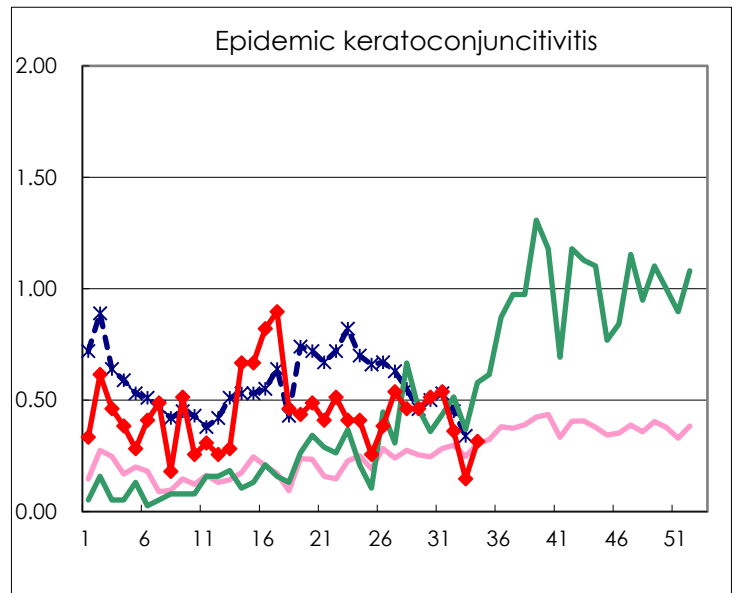
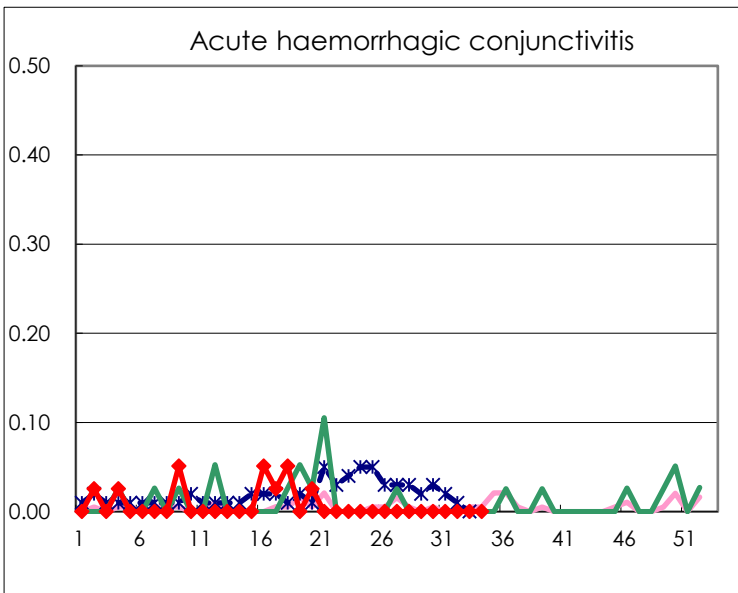
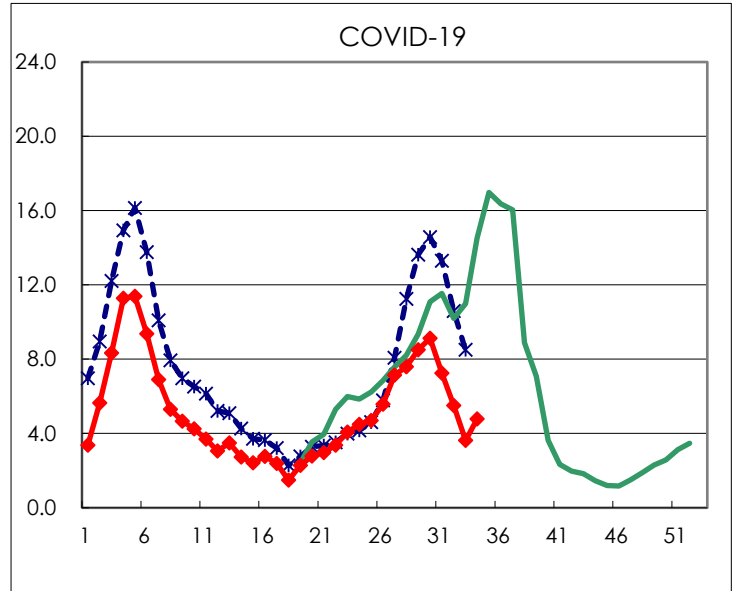
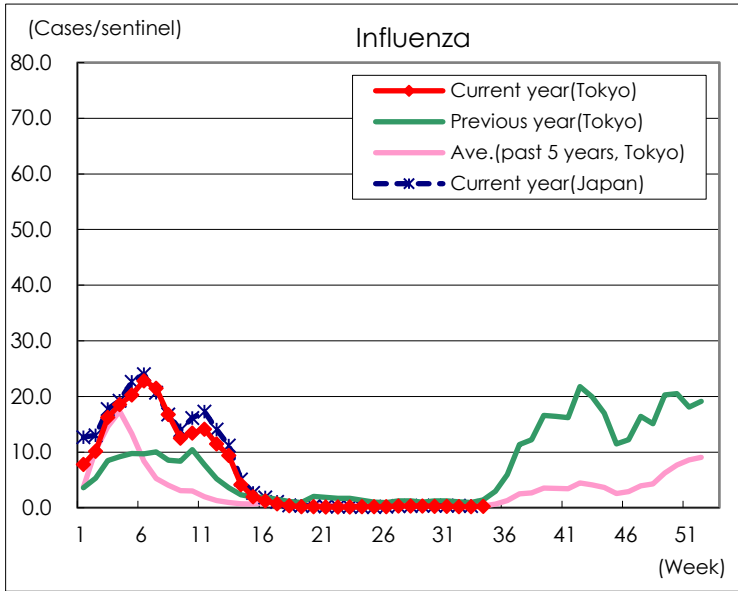
Diseases	Tokyo				
	31st	32nd	33rd	34th	/sentinel
Respiratory syncytial virus infection	104	100	50	50	0.20
Pharyngoconjunctival fever	48	73	27	39	0.15
Group A streptococcal pharyngitis	413	358	219	288	1.13
Infectious gastroenteritis	737	763	398	638	2.49
Chickenpox	30	40	23	24	0.09
Hand, foot, and mouth disease	2,790	1,983	987	1,164	4.55
Erythema infectiosum	99	110	77	96	0.38
Exanthem subitum	79	74	44	79	0.31
Herpangina	476	310	110	179	0.70
Mumps	7	12	8	5	0.02
Kawasaki disease	6	3	3	2	0.01
Cold with exanthems	10	18	7	8	0.03
Influenza	102	85	62	108	0.26
COVID-19	3,031	2,225	1,342	1,960	4.79
Acute hemorrhagic conjunctivitis					
Epidemic keratoconjunctivitis	21	13	5	12	0.32
Bacterial meningitis	1	1		1	0.04
Aseptic meningitis		2	1		
Mycoplasma pneumonia	37	53	55	38	1.52
Chlamydial pneumonia (excluding psittacosis)				1	0.04
Infectious gastroenteritis (only by Rotavirus)				1	0.04
Influenza-Associated Hospitalizations	3	1	8	2	0.08
COVID-19-Associated Hospitalizations	204	178	152	143	5.72

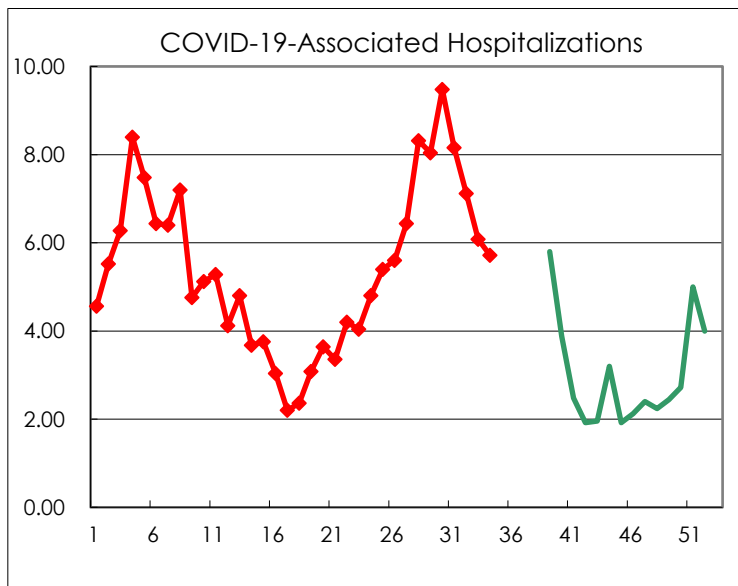
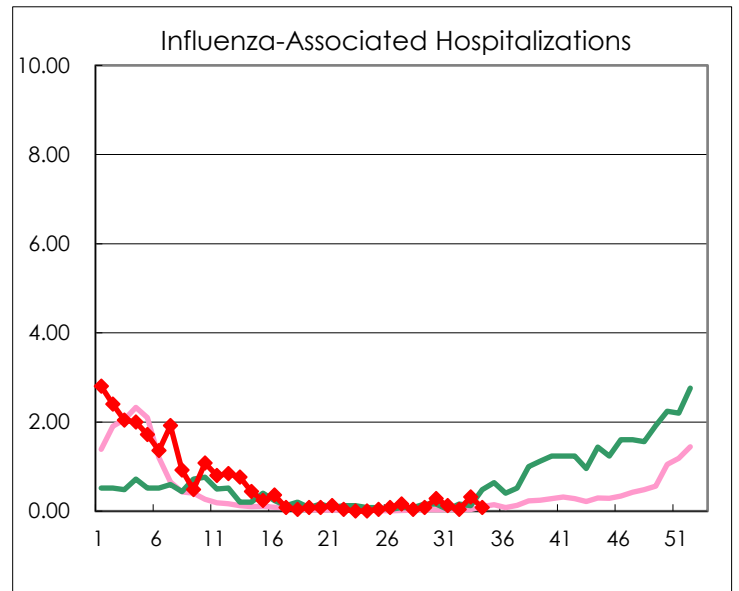
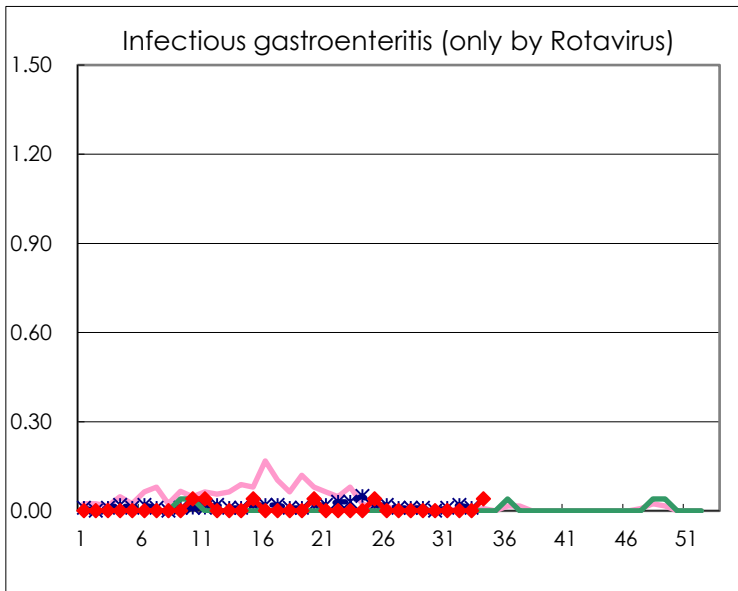
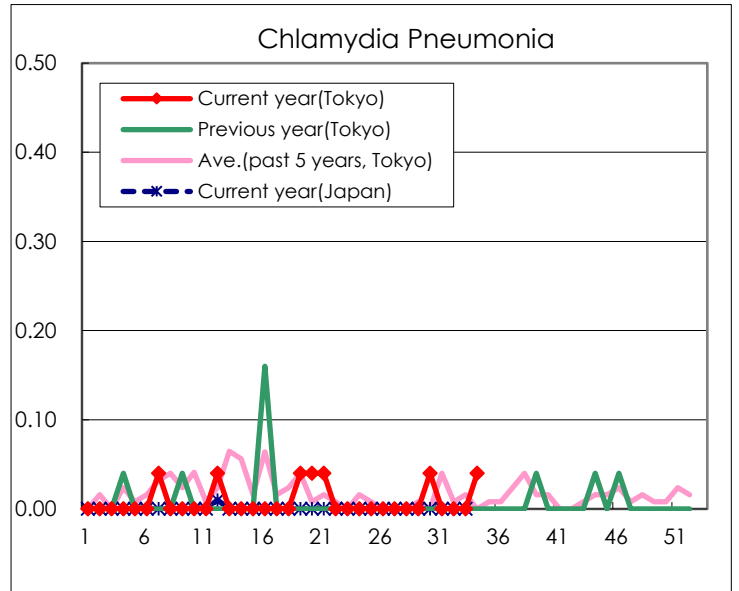
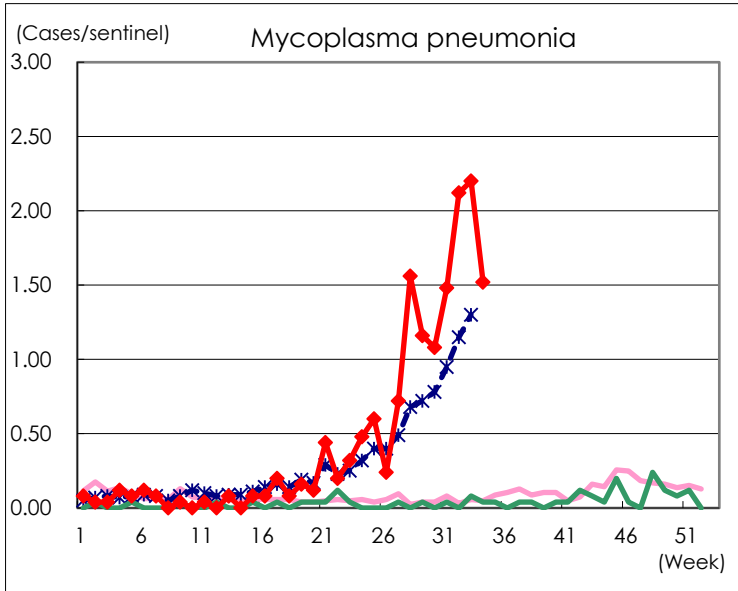
(Blank means 0.)

Disease Trend Graph (weekly reported cases per sentinel in comparison)









Number of sentinel facilities for weekly reporting		
Types of sentinels	Number of sentinels	Sentinels having reported
Pediatric	264	256
Influenza COVID-19	419	409
Ophthalmic	39	38
Specially-designated	25	25