
INFECTIOUS DISEASES WEEKLY REPORT

TOKYO iDWR

Tokyo Metropolitan Infectious Disease Surveillance Center

5 September 2024 / Number 35 (8/26 ~ 9/1)

Surveillance System in Tokyo, Japan

The infectious diseases which all physicians must report
All physicians must report to health centers the incidence of the diseases which are shown at page one. Health centers electronically report the individual cases to Tokyo Metropolitan Infectious Disease Surveillance Center.

The infectious diseases required to be reported by the sentinels
The numbers of patients who visit the sentinel clinics or hospitals during a week are reported to health centers in Tokyo. And they electronically report the numbers to Tokyo Metropolitan Infectious Disease Surveillance Center. We have about 500 sentinel clinics and hospitals in Tokyo.

Tokyo Metropolitan Institute of Public Health

TEL:81-3-3363-3213 FAX:81-3-5332-7365

e-mail:tmiph@section.metro.tokyo.jp

URL:idsc.tmiph.metro.tokyo.lg.jp/

Number of patients with the diseases which all physicians must report

Category	Diseases	Tokyo				
		32nd	33rd	34th	35th	Cum 2024
I	Ebola hemorrhagic fever					
	Crimean-Congo hemorrhagic fever					
	Smallpox					
	South American hemorrhagic fever					
	Plague					
	Marburg disease					
	Lassa fever					
II	Acute poliomyelitis					
	Tuberculosis	55	27	39	50	1,409
	Diphtheria					
	Severe Acute Respiratory Syndrome(SARS)					
	Middle East Respiratory Syndrome (MERS)					
	Avian influenza H5N1					
	Avian influenza H7N9					
III	Cholera					2
	Shigellosis	4	1	1	7	19
	Enterohemorrhagic Escherichia coli infection	9	19	27	20	265
	Typhoid fever				1	4
	Paratyphoid fever					2
IV	Hepatitis E	3	2	2	4	97
	West Nile fever					
	Hepatitis A	1				15
	Echinococcosis					
	Mpox					12
	Yellow fever					
	Psittacosis					
	Omsk hemorrhagic fever					
	Relapsing fever					
	Kyasanur forest disease					
	Q fever					
	Rabies					
	Coccidioidomycosis					1
	Zika virus infection					
	Severe Fever with Thrombocytopenia Syndrome					
	Hemorrhagic fever with renal syndrome					
	Western equine encephalitis					
	Tick-borne encephalitis					
	Anthrax					
	Chikungunya fever					
	Scrub typhus(Tsutsugamushi disease)					
	Dengue fever	1	2	2	3	44
	Eastern equine encephalitis					
	Avian influenza (excluding H5N1 and H7N9)					
	Nipah virus infection					
	Japanese spotted fever					
	Japanese encephalitis					
	Hantavirus pulmonary syndrome					
	Herpes B virus infection					
	Glanders					
	Brucellosis					
	Venezuelan equine encephalitis					
	Hendra virus infection					
Epidemic typhus						
Botulism						
Malaria			1		8	
Tularemia						
Lyme disease						
Lyssavirus infection(excluding rabies)						
Rift valley fever						
Melioidosis						
Legionellosis	4	1	2	11	127	
Leptospirosis	2				3	
Rocky mountain spotted fever						

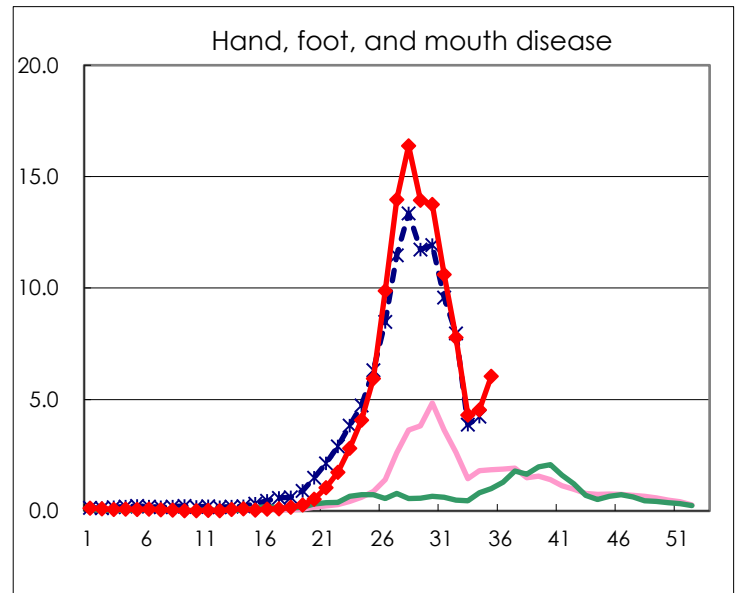
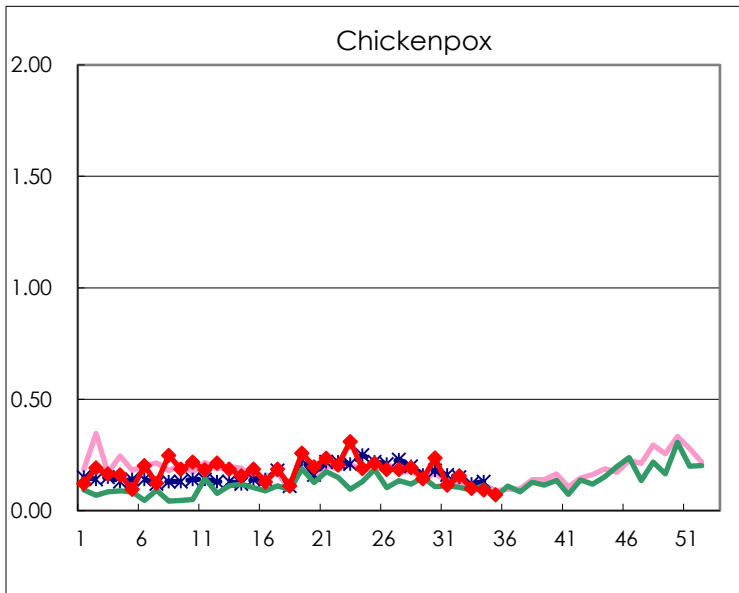
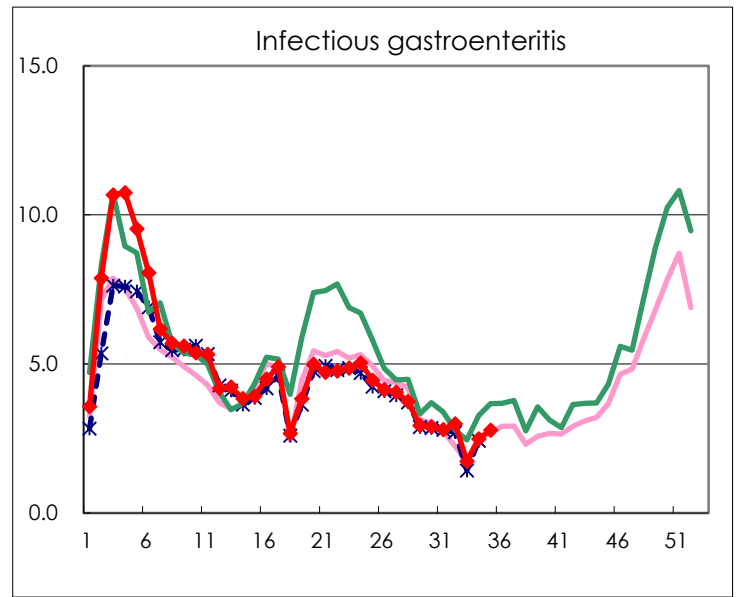
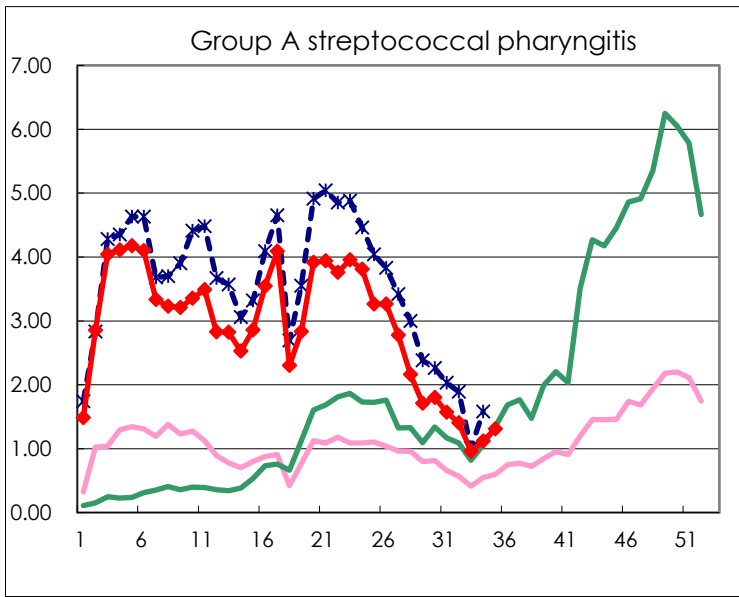
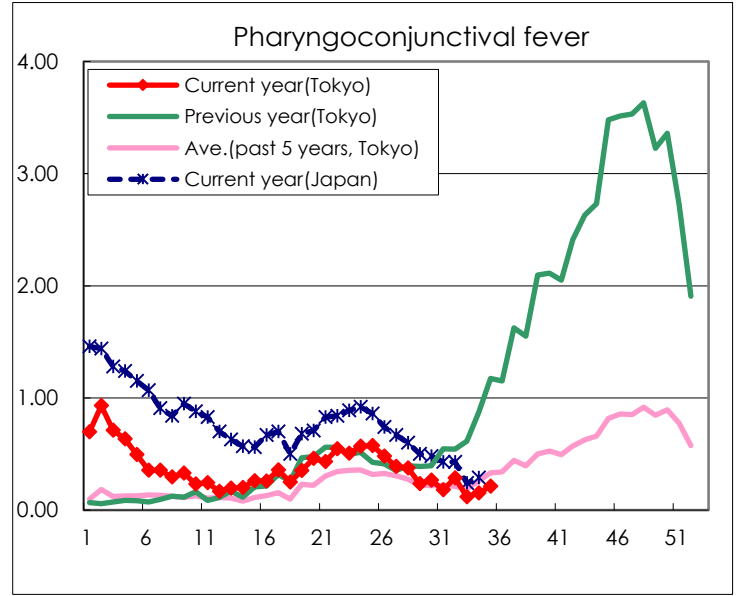
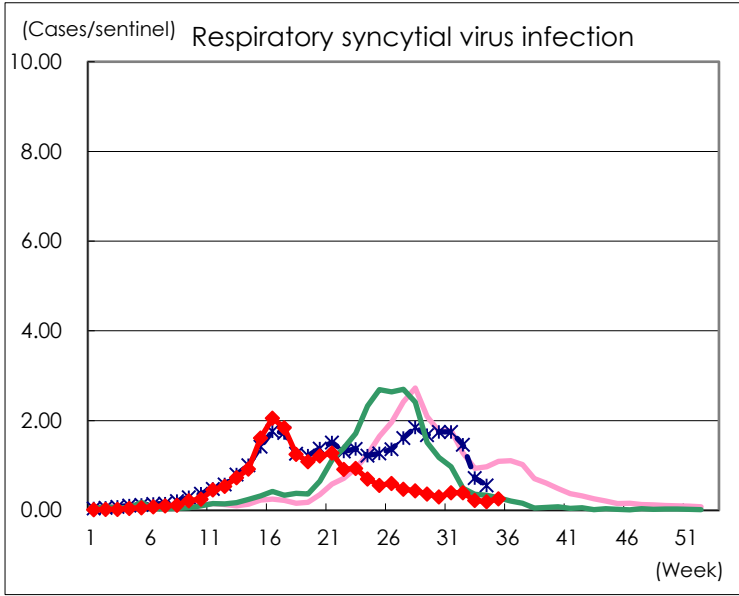
Category	Diseases	Tokyo				
		32nd	33rd	34th	35th	Cum 2024
V	Amebiasis	1	1	4	1	75
	Viral hepatitis(excluding hepatitis A and E)		1			26
	CRE infection	3	1	5	5	120
	Acute Flaccid Paralysis (excluding Acute poliomyelitis)					4
	Acute encephalitis(excluding JE and WNE)			1		30
	Cryptosporidiosis				1	7
	Creutzfeldt-Jakob disease			1		9
	Severe invasive streptococcal infections(TSLS)	5		5	4	196
	Acquired immunodeficiency syndrome (AIDS)	3	5	5	5	187
	Giardiasis				1	10
	Invasive <i>Haemophilus influenzae</i> disease	1	4		1	45
	Invasive meningococcal disease					6
	Invasive pneumococcal disease	4	2	4	5	193
	Varicella (limited to hospitalized case)	2	1	3		46
	Congenital rubella syndrome					
	Syphilis	86	57	78	77	2,460
	Disseminated cryptococcosis					16
	Tetanus					1
	Vancomycin-resistant <i>S. aureus</i> infection					
	Vancomycin-resistant <i>Enterococcus</i> infection	1				6
	Pertussis	7	12	14	15	143
Rubella					1	
Measles					8	
MDRA infection					1	

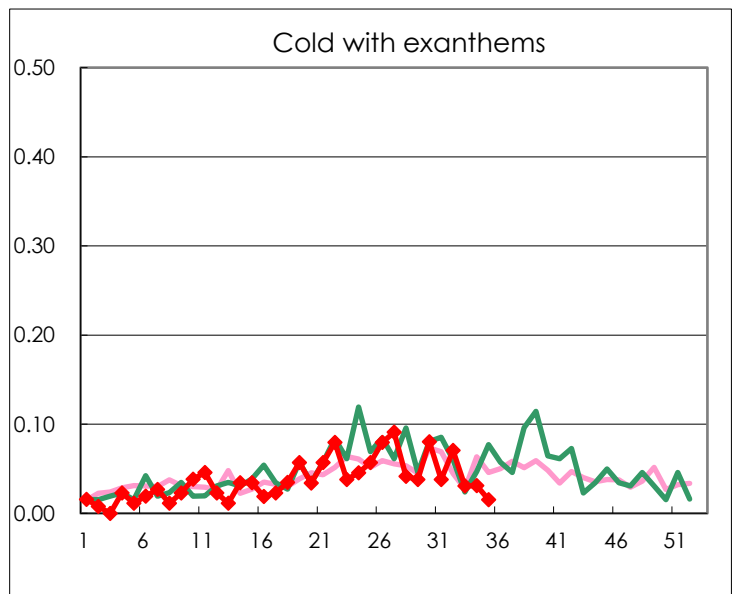
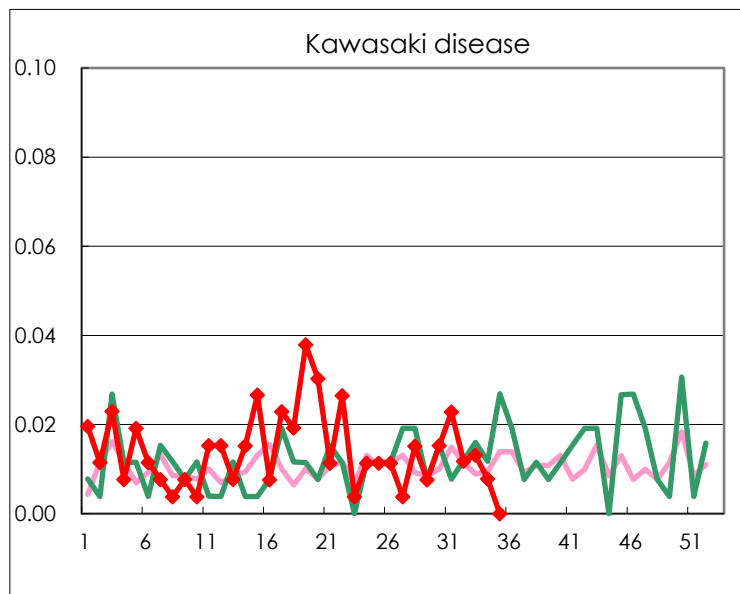
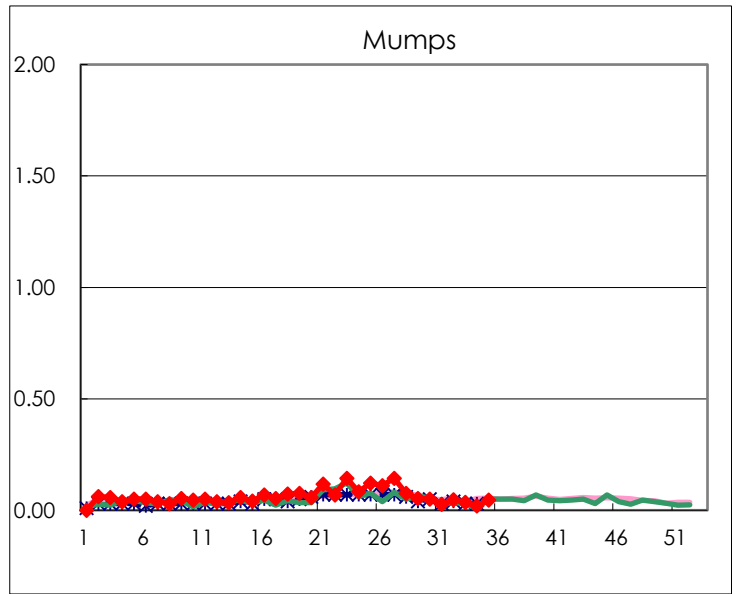
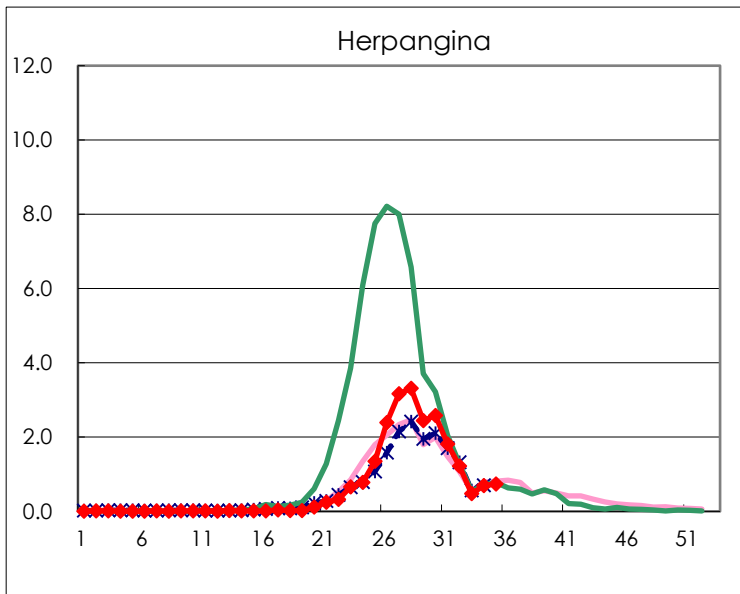
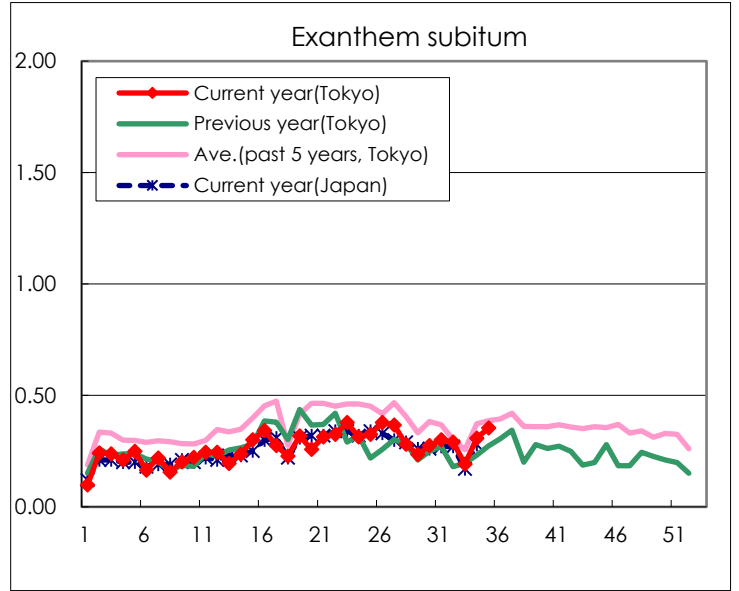
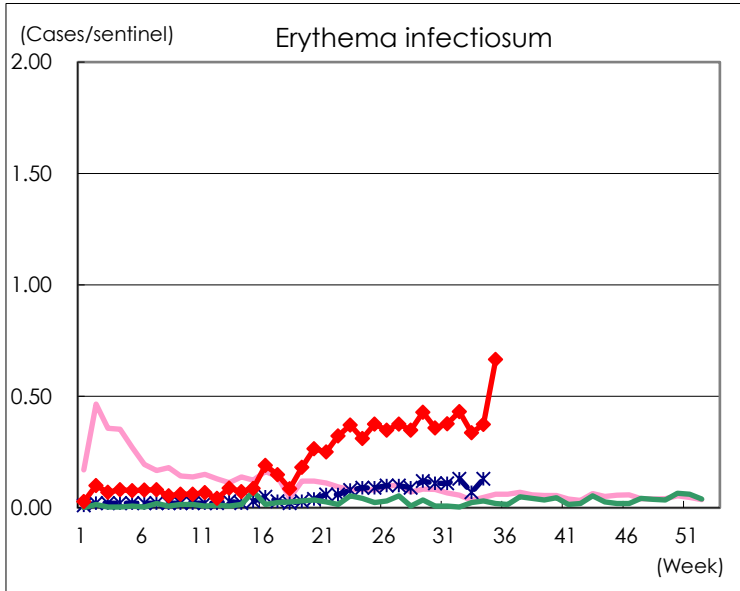
Number of patients with the diseases to be reported
by the designated clinics and hospitals

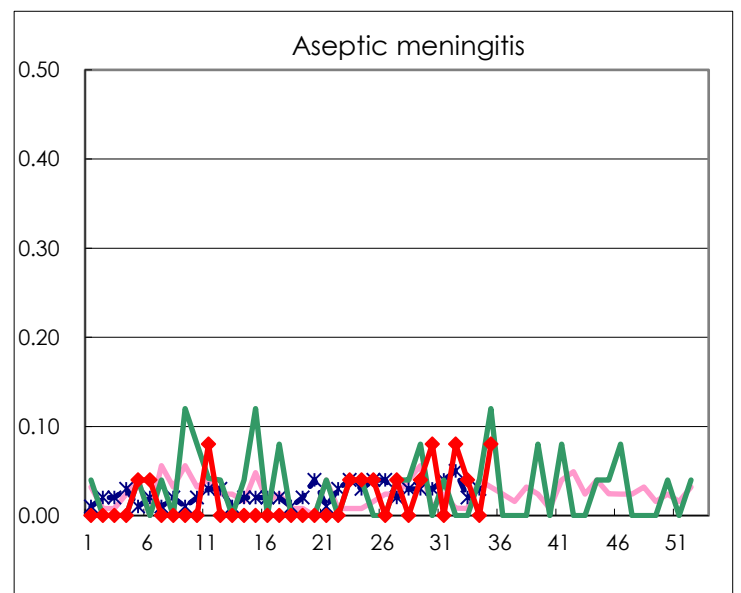
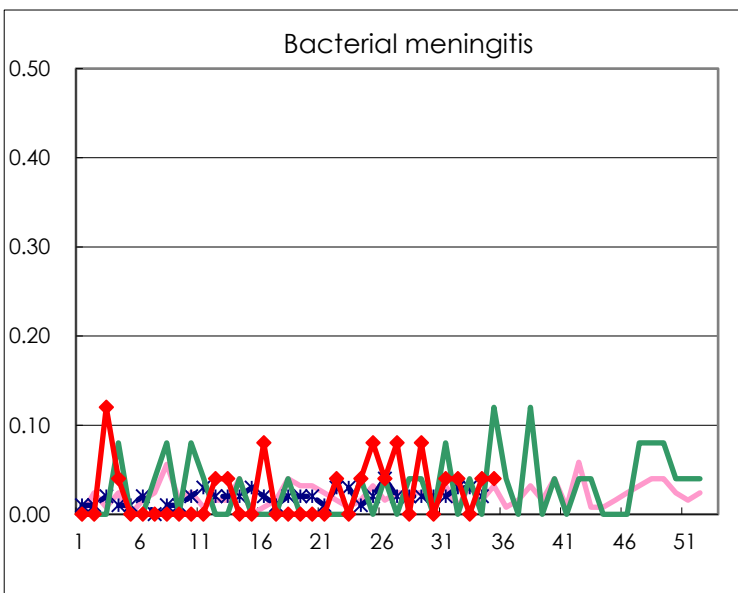
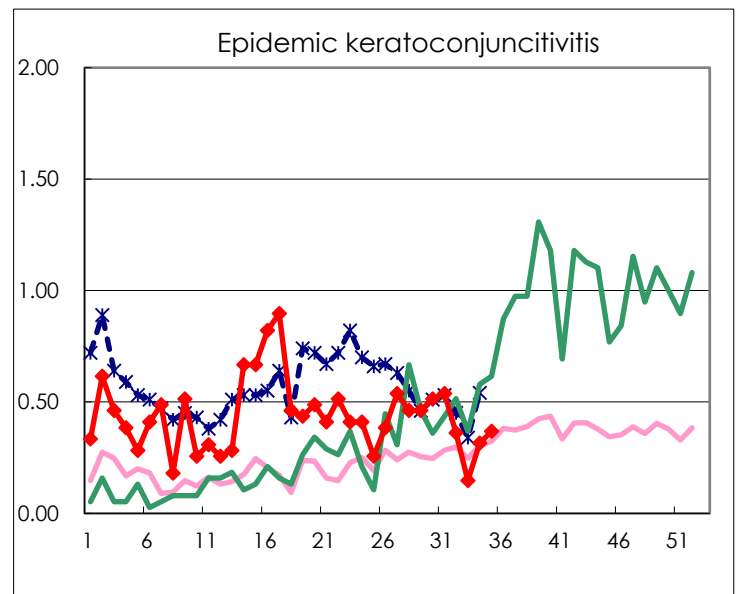
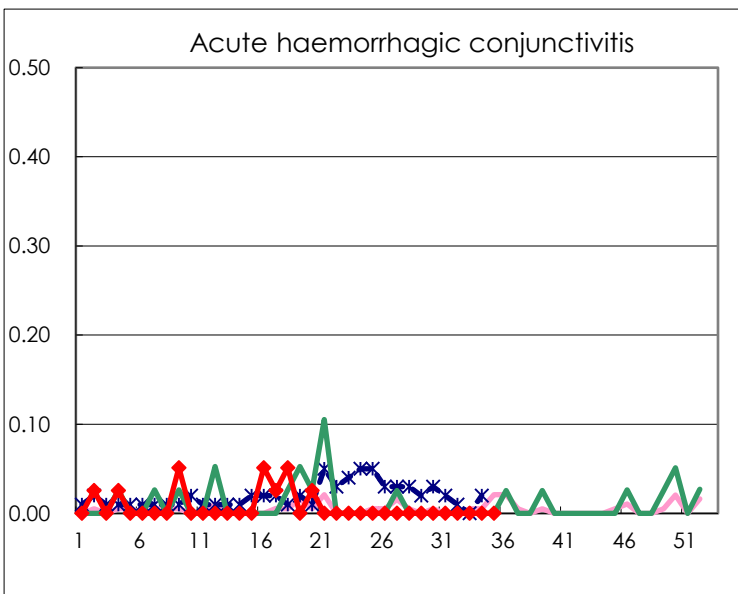
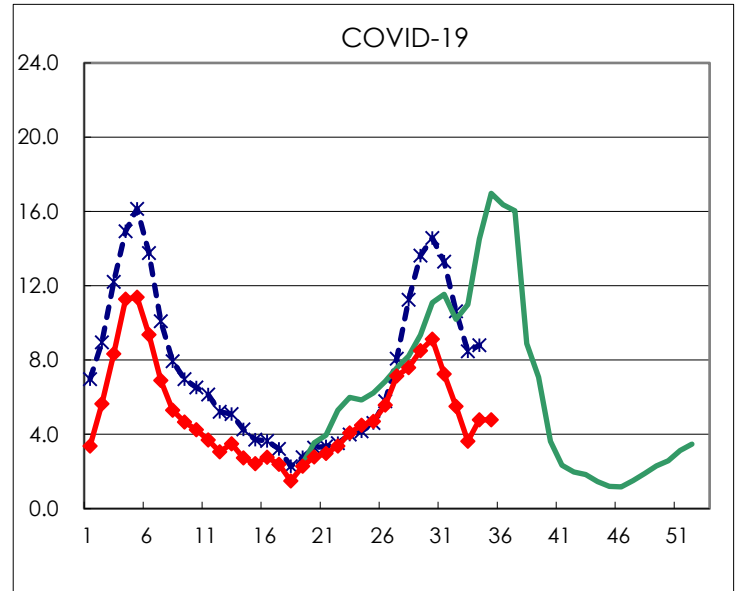
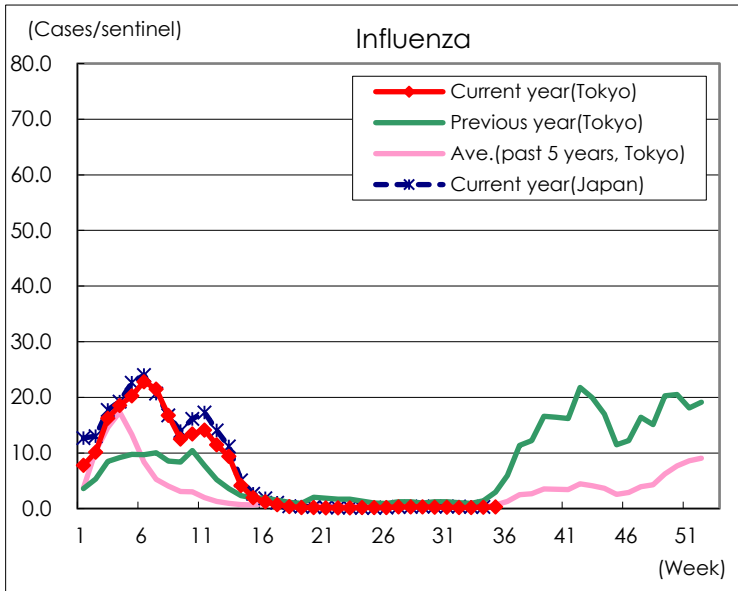
Diseases	Tokyo				
	32nd	33rd	34th	35th	/sentinel
Respiratory syncytial virus infection	100	50	50	68	0.26
Pharyngoconjunctival fever	73	27	39	56	0.21
Group A streptococcal pharyngitis	358	219	288	344	1.31
Infectious gastroenteritis	763	398	640	730	2.78
Chickenpox	40	23	24	19	0.07
Hand, foot, and mouth disease	1,983	987	1,166	1,589	6.04
Erythema infectiosum	110	77	96	175	0.67
Exanthem subitum	74	44	79	93	0.35
Herpangina	310	110	179	194	0.74
Mumps	12	8	5	12	0.05
Kawasaki disease	3	3	2		
Cold with exanthems	18	7	8	4	0.02
Influenza	85	62	108	130	0.31
COVID-19	2,225	1,342	1,962	1,987	4.78
Acute hemorrhagic conjunctivitis					
Epidemic keratoconjunctivitis	13	5	12	14	0.37
Bacterial meningitis	1		1	1	0.04
Aseptic meningitis	2	1		2	0.08
<i>Mycoplasma pneumoniae</i>	53	55	38	52	2.08
Chlamydial pneumonia (excluding <i>psittacosis</i>)			1	1	0.04
Infectious gastroenteritis (only by Rotavirus)			1	1	0.04
Influenza-Associated Hospitalizations	1	8	2	9	0.36
COVID-19-Associated Hospitalizations	178	152	143	145	5.80

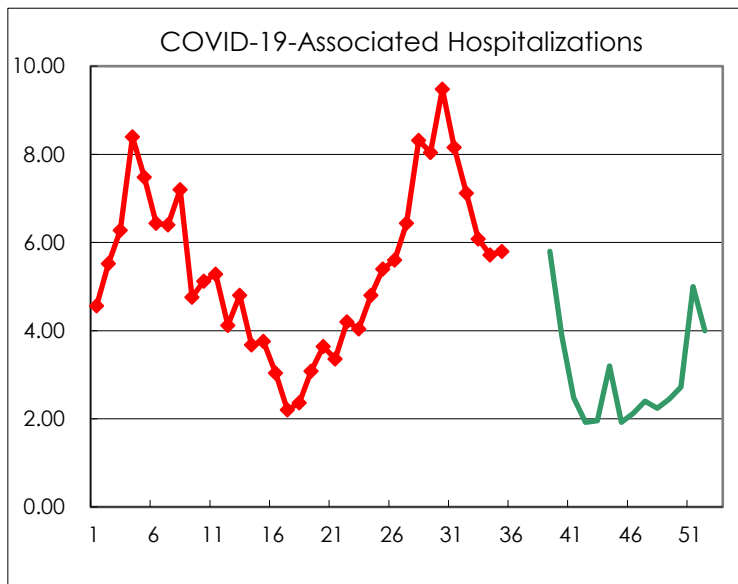
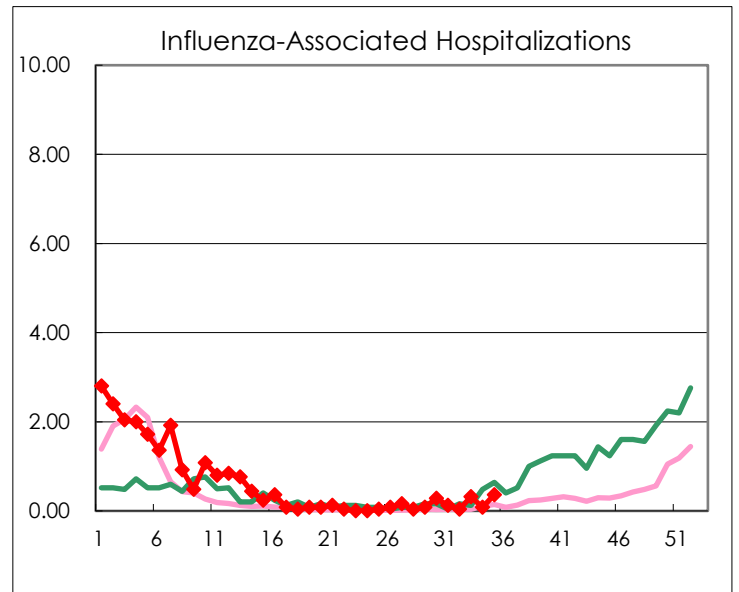
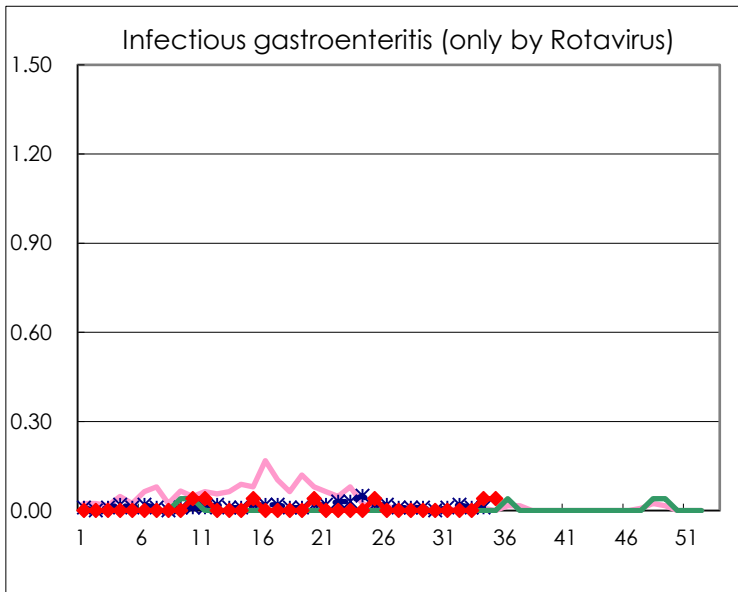
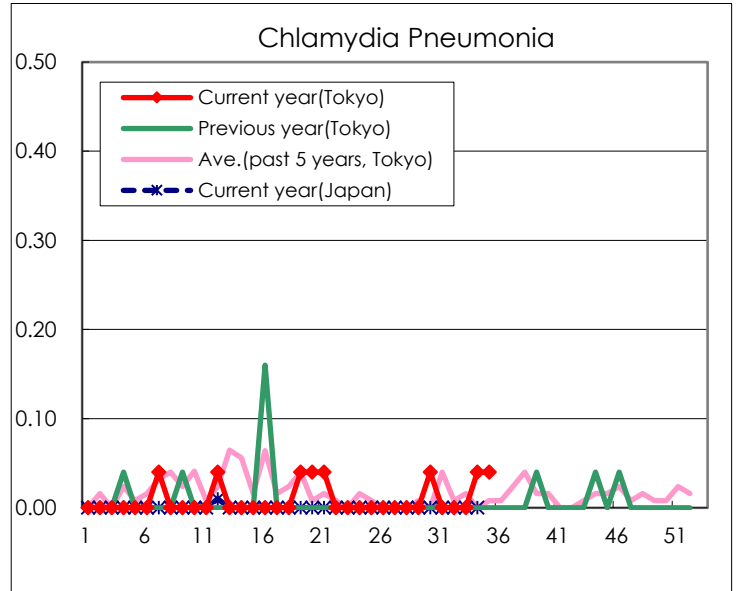
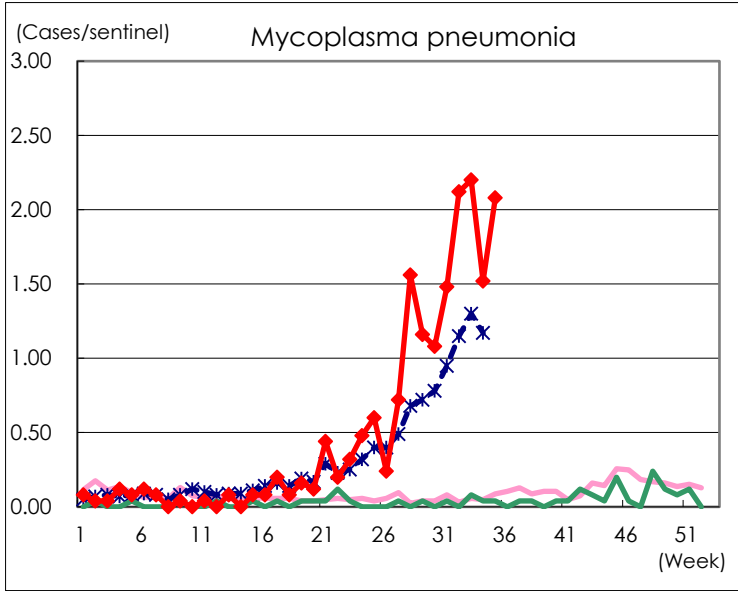
(Blank means 0.)

Disease Trend Graph (weekly reported cases per sentinel in comparison)









Number of sentinel facilities for weekly reporting		
Types of sentinels	Number of sentinels	Sentinels having reported
Pediatric	264	263
Influenza COVID-19	419	416
Ophthalmic	39	38
Specially-designated	25	25