

---

INFECTIOUS DISEASES WEEKLY REPORT

TOKYO **iDWR**

Tokyo Metropolitan Infectious Disease Surveillance Center

**12 September 2024 / Number 36**  
**( 9/2 ~ 9/8 )**

## Surveillance System in Tokyo, Japan

The infectious diseases which all physicians must report  
All physicians must report to health centers the incidence of the diseases which are shown at page one. Health centers electronically report the individual cases to Tokyo Metropolitan Infectious Disease Surveillance Center.

The infectious diseases required to be reported by the sentinels  
The numbers of patients who visit the sentinel clinics or hospitals during a week are reported to health centers in Tokyo. And they electronically report the numbers to Tokyo Metropolitan Infectious Disease Surveillance Center. We have about 500 sentinel clinics and hospitals in Tokyo.

Tokyo Metropolitan Institute of Public Health

TEL:81-3-3363-3213 FAX:81-3-5332-7365

e-mail:tmiph@section.metro.tokyo.jp

URL:idsc.tmiph.metro.tokyo.lg.jp/

---

Number of patients with the diseases which all physicians must report

Category	Diseases	Tokyo				
		33rd	34th	35th	36th	Cum 2024
I	Ebola hemorrhagic fever					
	Crimean-Congo hemorrhagic fever					
	Smallpox					
	South American hemorrhagic fever					
	Plague					
	Marburg disease					
	Lassa fever					
II	Acute poliomyelitis					
	Tuberculosis	27	39	51	53	1,463
	Diphtheria					
	Severe Acute Respiratory Syndrome(SARS)					
	Middle East Respiratory Syndrome (MERS)					
	Avian influenza H5N1					
	Avian influenza H7N9					
III	Cholera					2
	Shigellosis	1	1	7		19
	Enterohemorrhagic Escherichia coli infection	19	27	21	17	283
	Typhoid fever			1		4
	Paratyphoid fever					2
IV	Hepatitis E	2	2	4	3	100
	West Nile fever					
	Hepatitis A					15
	Echinococcosis		1			1
	Mpox					12
	Yellow fever					
	Psittacosis					
	Omsk hemorrhagic fever					
	Relapsing fever					
	Kyasanur forest disease					
	Q fever					
	Rabies					
	Coccidioidomycosis				1	2
	Zika virus infection					
	Severe Fever with Thrombocytopenia Syndrome					
	Hemorrhagic fever with renal syndrome					
	Western equine encephalitis					
	Tick-borne encephalitis					
	Anthrax					
	Chikungunya fever					
	Scrub typhus(Tsutsugamushi disease)					
	Dengue fever	2	2	3	4	48
	Eastern equine encephalitis					
	Avian influenza (excluding H5N1 and H7N9)					
	Nipah virus infection					
	Japanese spotted fever					
	Japanese encephalitis					
	Hantavirus pulmonary syndrome					
	Herpes B virus infection					
	Glanders					
	Brucellosis					
	Venezuelan equine encephalitis					
	Hendra virus infection					
	Epidemic typhus					
	Botulism					
	Malaria		1			8
	Tularemia					
	Lyme disease					
	Lyssavirus infection(excluding rabies)					
	Rift valley fever					
Melioidosis						
Legionellosis	1	2	14	13	143	
Leptospirosis					3	
Rocky mountain spotted fever						

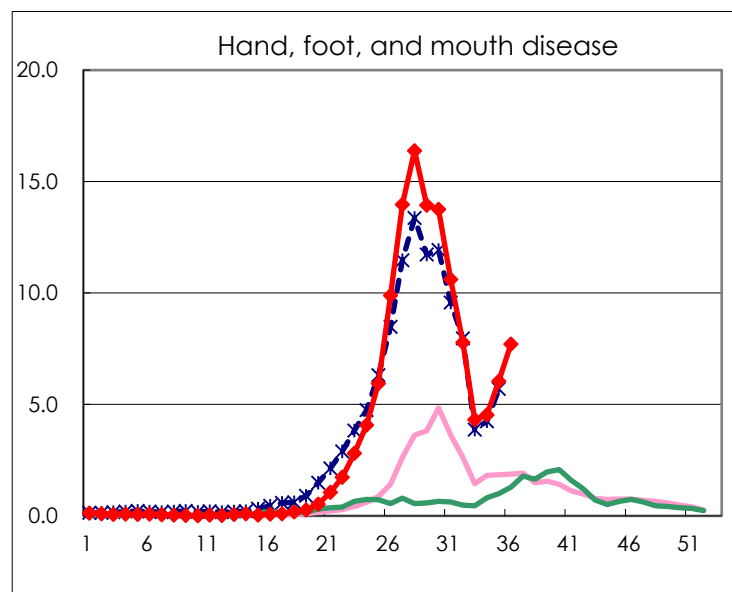
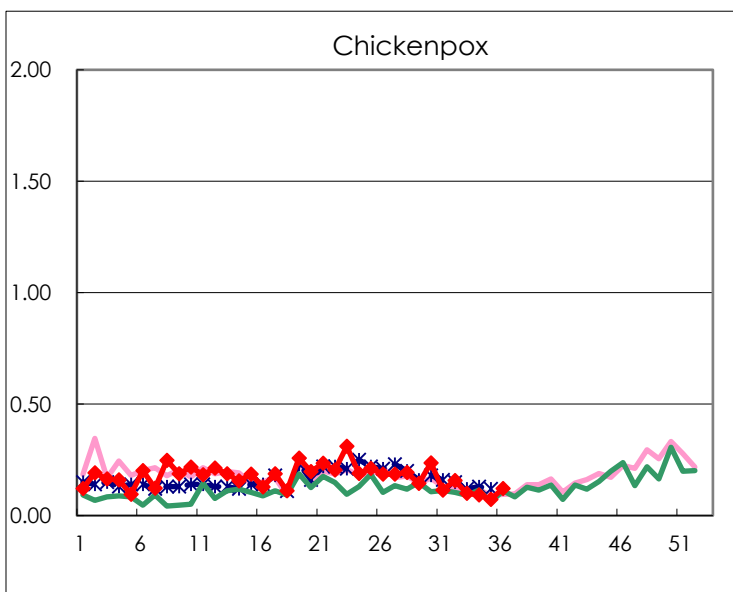
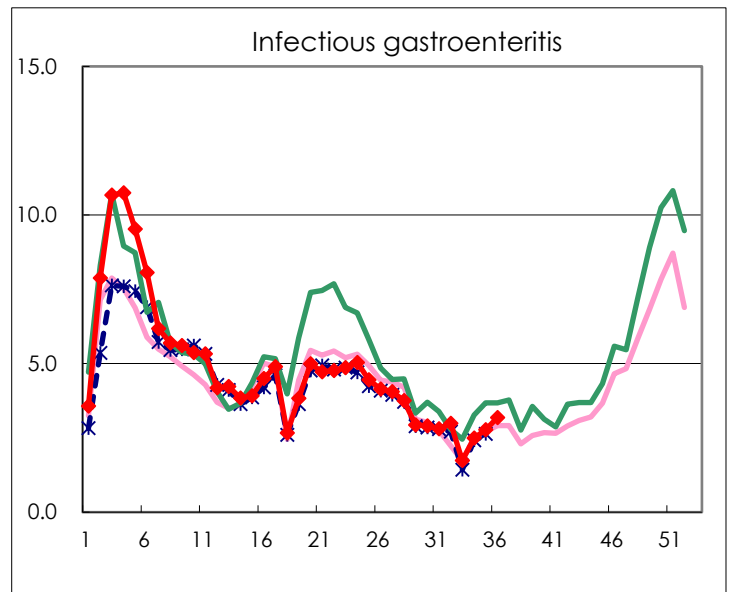
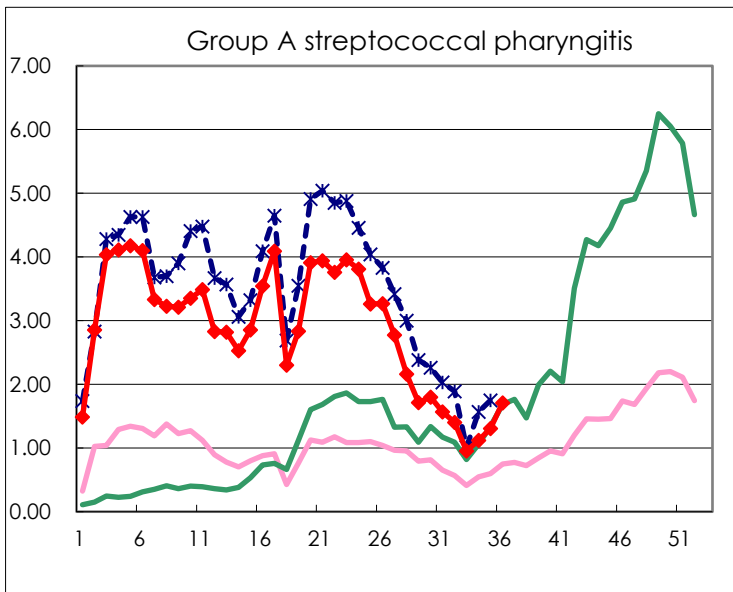
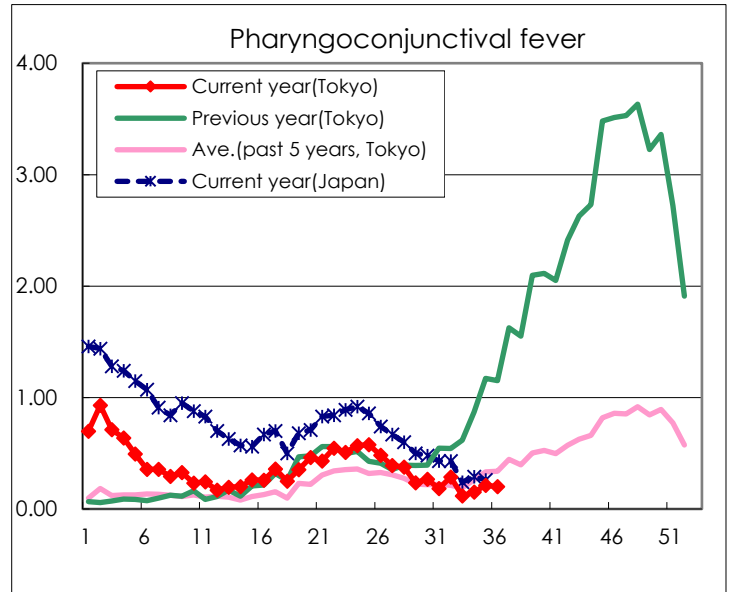
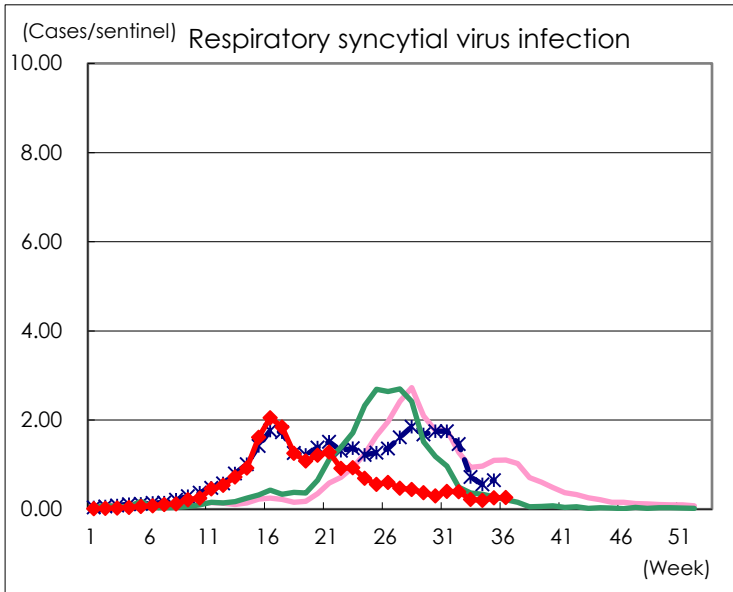
Category	Diseases	Tokyo				
		33rd	34th	35th	36th	Cum 2024
V	Amebiasis	1	4	1	2	77
	Viral hepatitis(excluding hepatitis A and E)	1				26
	CRE infection	1	5	6	8	129
	Acute Flaccid Paralysis (excluding Acute poliomyelitis)					4
	Acute encephalitis(excluding JE and WNE)		2		1	32
	Cryptosporidiosis			1	3	10
	Creutzfeldt-Jakob disease		1			9
	Severe invasive streptococcal infections(TSLs)		5	4	5	201
	Acquired immunodeficiency syndrome (AIDS)	5	5	5	9	196
	Giardiasis			1		10
	Invasive <i>Haemophilus influenzae</i> disease	4		1	1	46
	Invasive meningococcal disease					6
	Invasive pneumococcal disease	2	4	5	1	194
	Varicella (limited to hospitalized case)	1	3		2	48
	Congenital rubella syndrome					
	Syphilis	57	78	97	69	2,549
	Disseminated cryptococcosis					16
	Tetanus					1
	Vancomycin-resistant <i>S. aureus</i> infection					
	Vancomycin-resistant Enterococcus infection					6
	Pertussis	12	14	17	9	154
	Rubella					1
	Measles					8
MDRA infection					1	

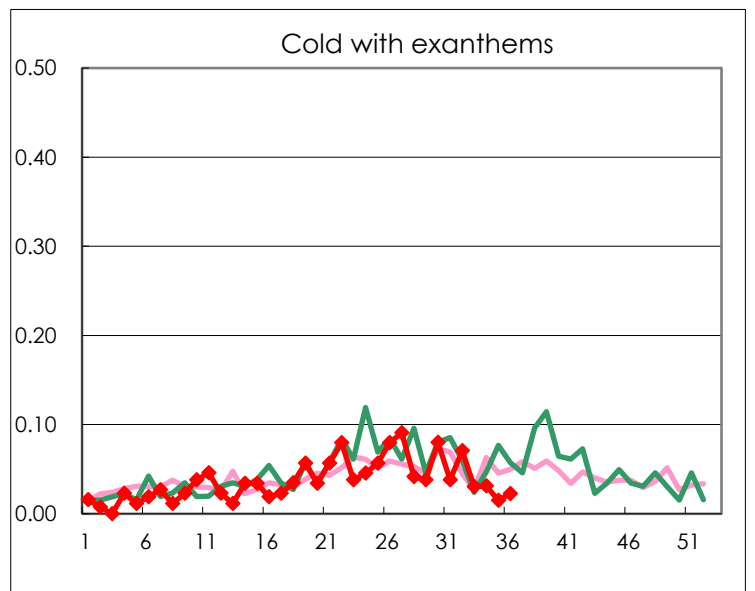
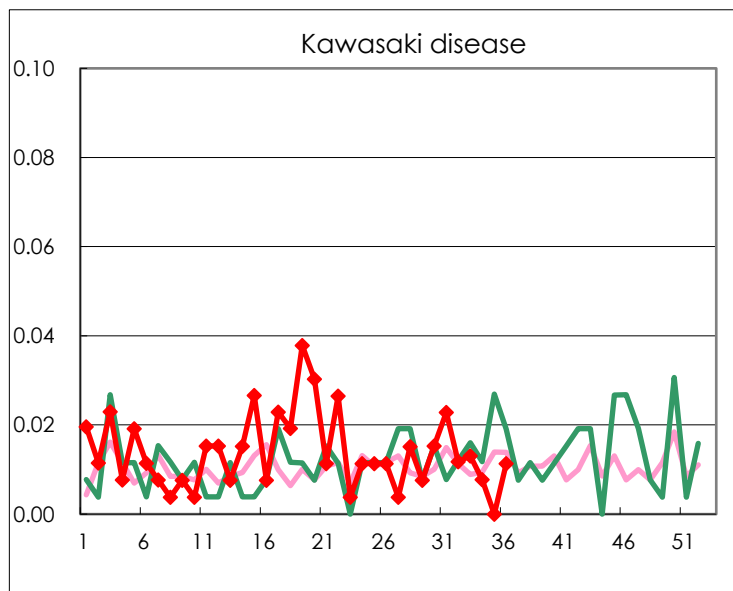
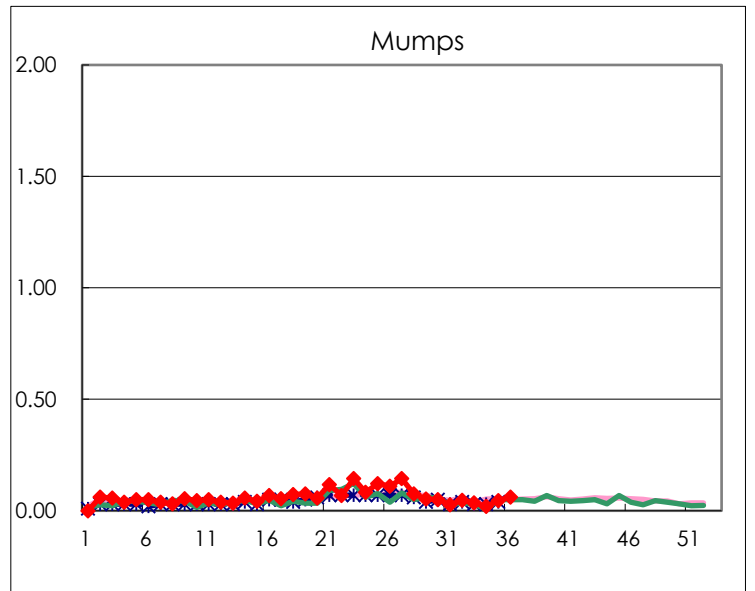
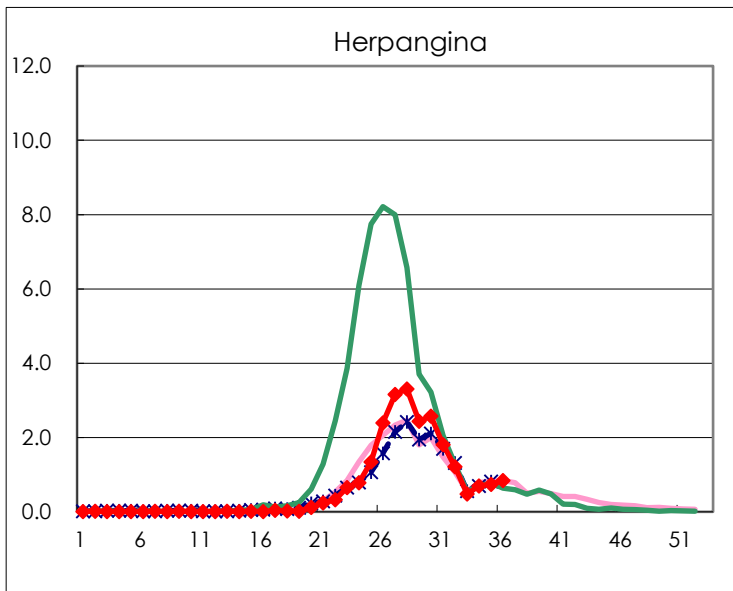
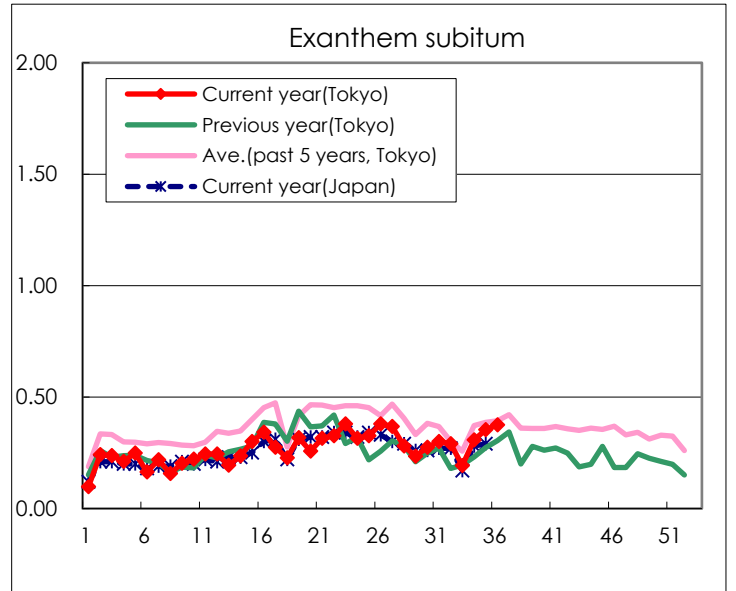
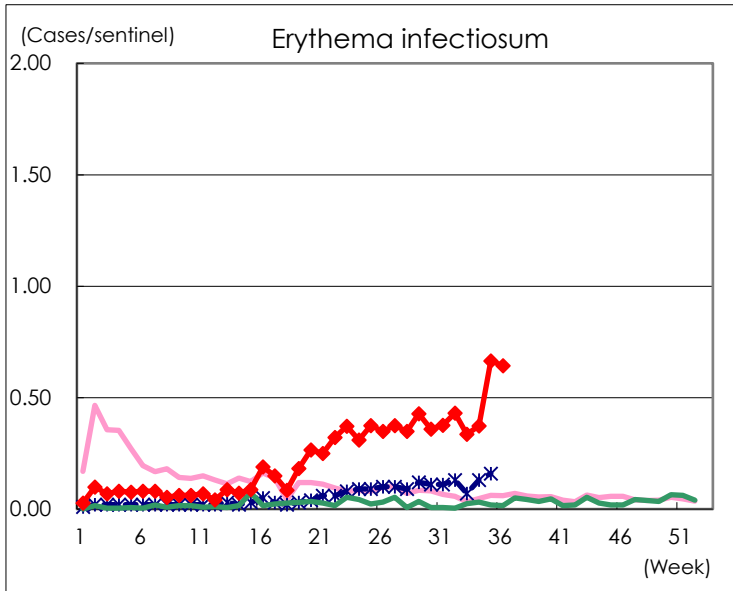
Number of patients with the diseases to be reported  
by the designated clinics and hospitals

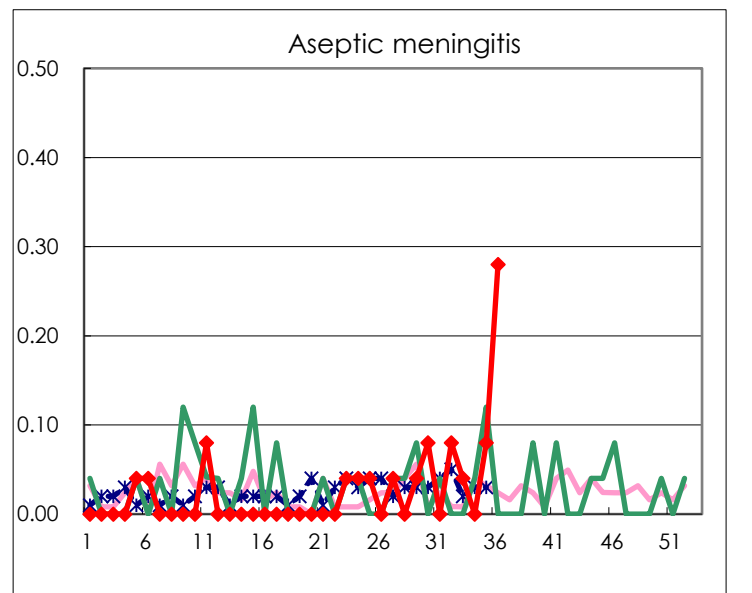
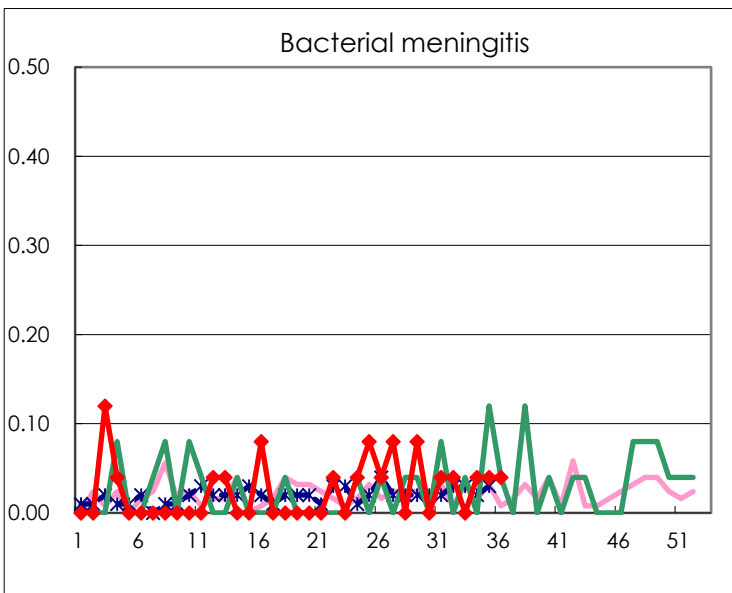
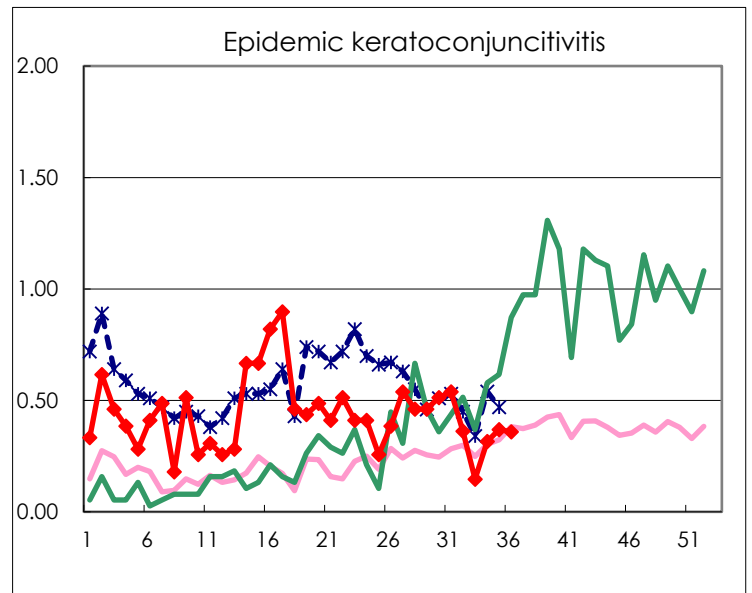
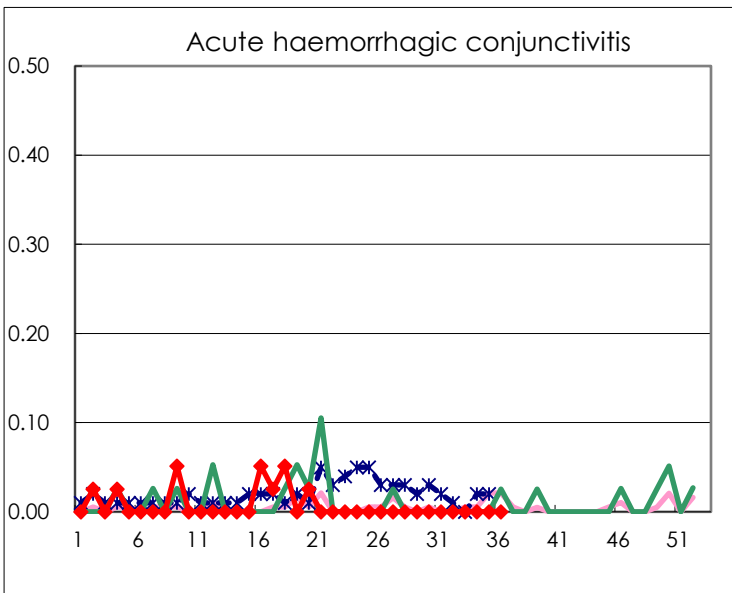
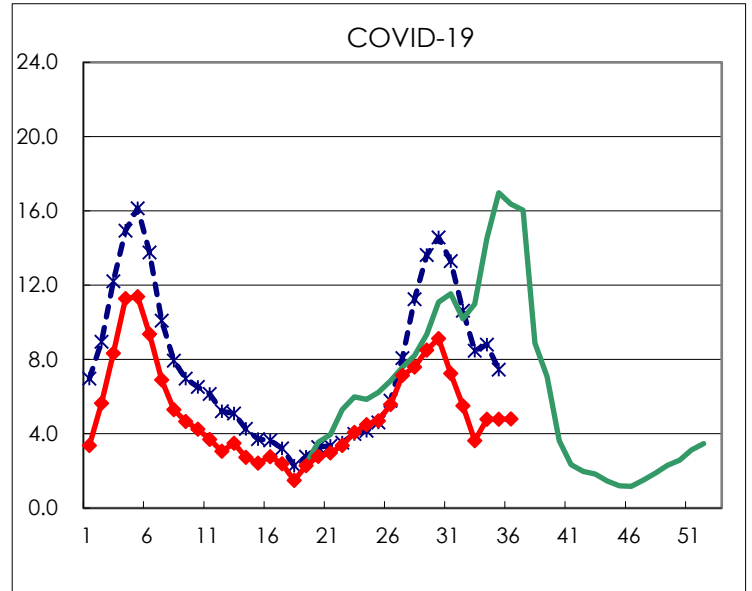
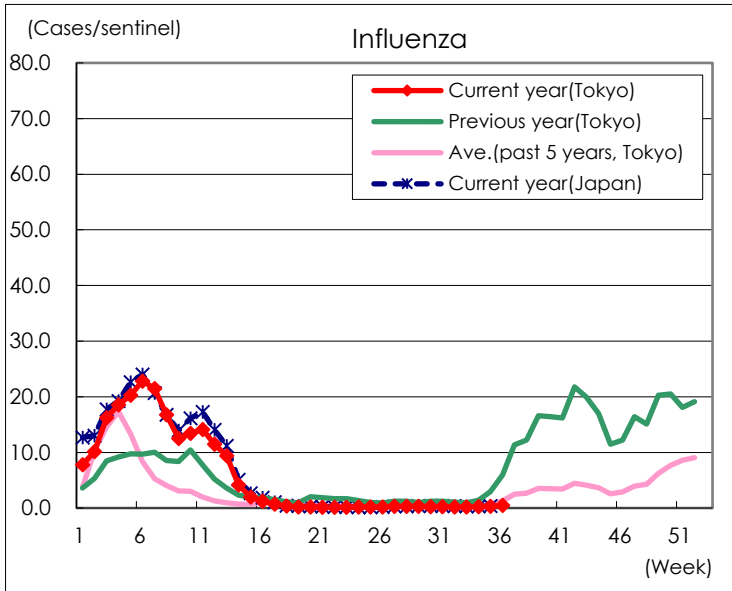
Diseases	Tokyo				
	33rd	34th	35th	36th	/sentinel
Respiratory syncytial virus infection	50	50	68	69	0.26
Pharyngoconjunctival fever	27	39	56	53	0.20
Group A streptococcal pharyngitis	219	288	344	451	1.71
Infectious gastroenteritis	398	640	730	839	3.18
Chickenpox	23	24	19	32	0.12
Hand, foot, and mouth disease	987	1,166	1,589	2,033	7.70
Erythema infectiosum	77	96	175	170	0.64
Exanthem subitum	44	79	93	99	0.38
Herpangina	110	179	194	222	0.84
Mumps	8	5	12	16	0.06
Kawasaki disease	3	2		3	0.01
Cold with exanthems	7	8	4	6	0.02
Influenza	62	108	130	208	0.50
COVID-19	1,342	1,962	1,987	2,011	4.80
Acute hemorrhagic conjunctivitis					
Epidemic keratoconjunctivitis	5	12	14	14	0.36
Bacterial meningitis		1	1	1	0.04
Aseptic meningitis	1		2	7	0.28
Mycoplasma pneumonia	55	38	52	32	1.28
Chlamydial pneumonia (excluding psittacosis)		1	1		
Infectious gastroenteritis (only by Rotavirus)		1	1		
Influenza-Associated Hospitalizations	8	2	9	3	0.12
COVID-19-Associated Hospitalizations	152	143	145	151	6.04

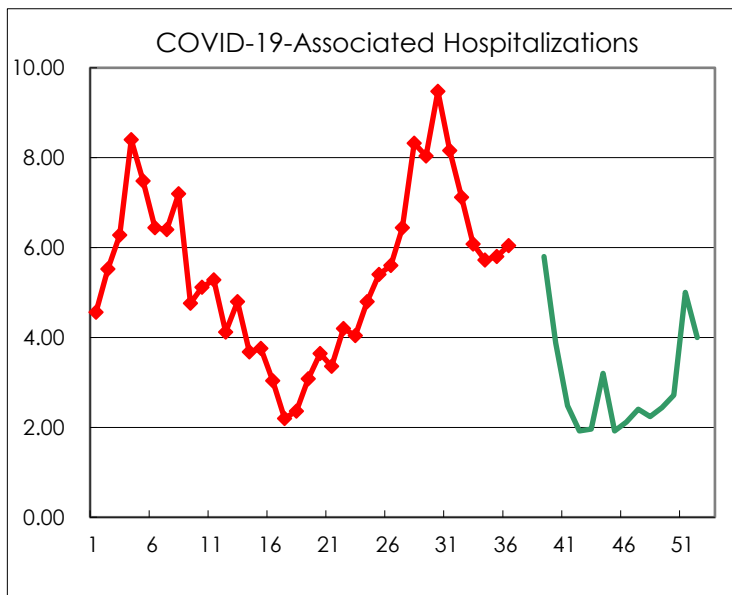
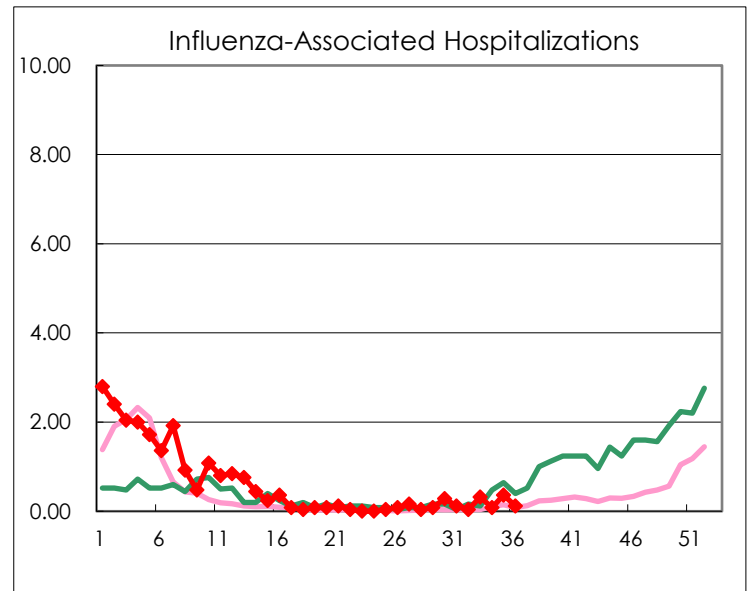
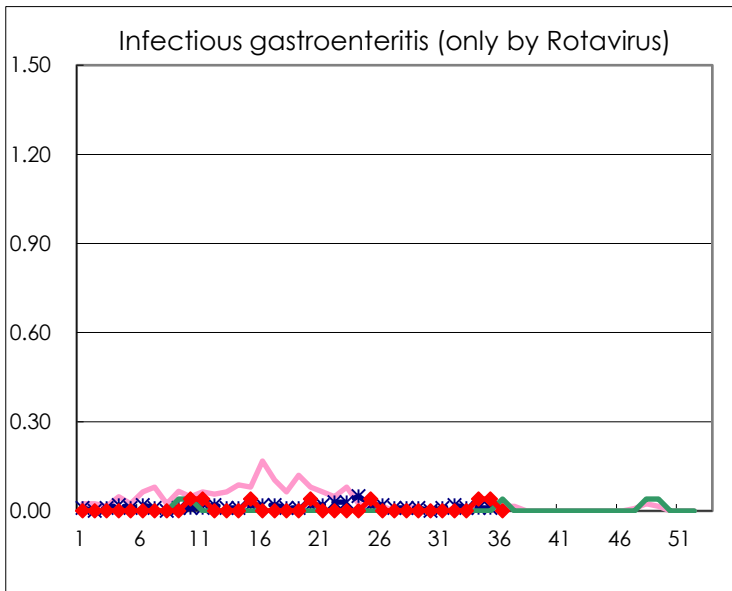
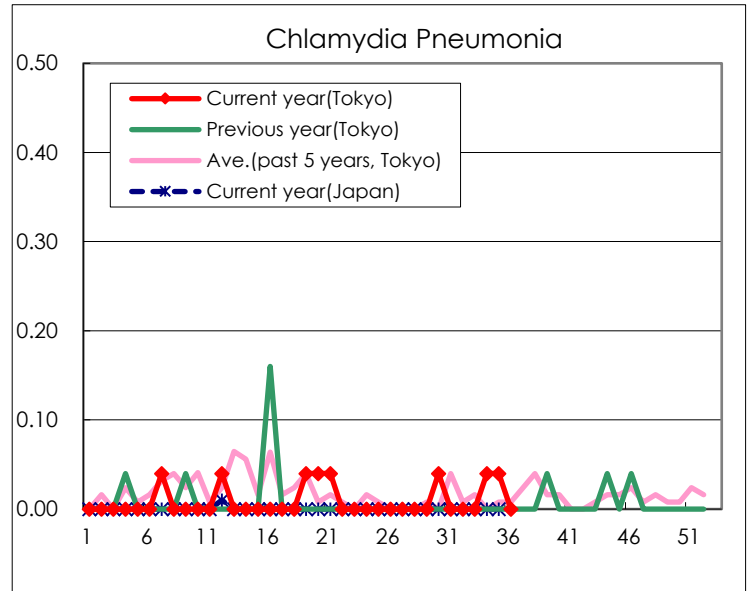
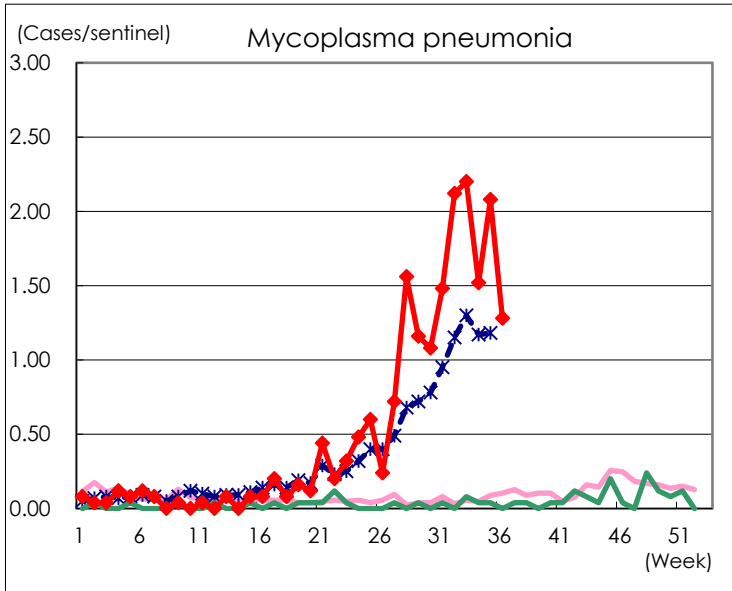
( Blank means 0. )

# Disease Trend Graph (weekly reported cases per sentinel in comparison)









Number of sentinel facilities for weekly reporting		
Types of sentinels	Number of sentinels	Sentinels having reported
Pediatric	264	264
Influenza COVID-19	419	419
Ophthalmic	39	39
Specially-designated	25	25