
INFECTIOUS DISEASES WEEKLY REPORT

TOKYO IDWR

Tokyo Metropolitan Infectious Disease Surveillance Center

19 September 2024 / Number 37
(9/9 ~ 9/15)

Surveillance System in Tokyo, Japan

The infectious diseases which all physicians must report
All physicians must report to health centers the incidence of the diseases which are shown at page one. Health centers electronically report the individual cases to Tokyo Metropolitan Infectious Disease Surveillance Center.

The infectious diseases required to be reported by the sentinels
The numbers of patients who visit the sentinel clinics or hospitals during a week are reported to health centers in Tokyo. And they electronically report the numbers to Tokyo Metropolitan Infectious Disease Surveillance Center. We have about 500 sentinel clinics and hospitals in Tokyo.

Tokyo Metropolitan Institute of Public Health

TEL:81-3-3363-3213 FAX:81-3-5332-7365

e-mail:tmiph@section.metro.tokyo.jp

URL:idsc.tmiph.metro.tokyo.lg.jp/

Number of patients with the diseases which all physicians must report

Category	Diseases	Tokyo				
		34th	35th	36th	37th	Cum 2024
I	Ebola hemorrhagic fever					
	Crimean-Congo hemorrhagic fever					
	Smallpox					
	South American hemorrhagic fever					
	Plague					
	Marburg disease					
	Lassa fever					
II	Acute poliomyelitis					
	Tuberculosis	39	51	53	49	1,512
	Diphtheria					
	Severe Acute Respiratory Syndrome(SARS)					
	Middle East Respiratory Syndrome (MERS)					
	Avian influenza H5N1					
	Avian influenza H7N9					
III	Cholera					2
	Shigellosis	1	7			19
	Enterohemorrhagic Escherichia coli infection	28	21	18	17	302
	Typhoid fever		1			4
	Paratyphoid fever					2
IV	Hepatitis E	2	4	3	2	102
	West Nile fever					
	Hepatitis A				1	16
	Echinococcosis	1				1
	Mpox					12
	Yellow fever					
	Psittacosis					
	Omsk hemorrhagic fever					
	Relapsing fever					
	Kyasanur forest disease					
	Q fever					
	Rabies					
	Coccidioidomycosis			1		2
	Zika virus infection					
	Severe Fever with Thrombocytopenia Syndrome					
	Hemorrhagic fever with renal syndrome					
	Western equine encephalitis					
	Tick-borne encephalitis					
	Anthrax					
	Chikungunya fever					
	Scrub typhus(Tsutsugamushi disease)					
	Dengue fever	2	3	4	1	49
	Eastern equine encephalitis					
	Avian influenza (excluding H5N1 and H7N9)					
	Nipah virus infection					
	Japanese spotted fever					
	Japanese encephalitis					
	Hantavirus pulmonary syndrome					
	Herpes B virus infection					
	Glanders					
	Brucellosis					
	Venezuelan equine encephalitis					
	Hendra virus infection					
Epidemic typhus						
Botulism						
Malaria	1				8	
Tularemia						
Lyme disease						
Lyssavirus infection(excluding rabies)						
Rift valley fever						
Melioidosis						
Legionellosis	2	14	13	11	154	
Leptospirosis					3	
Rocky mountain spotted fever						

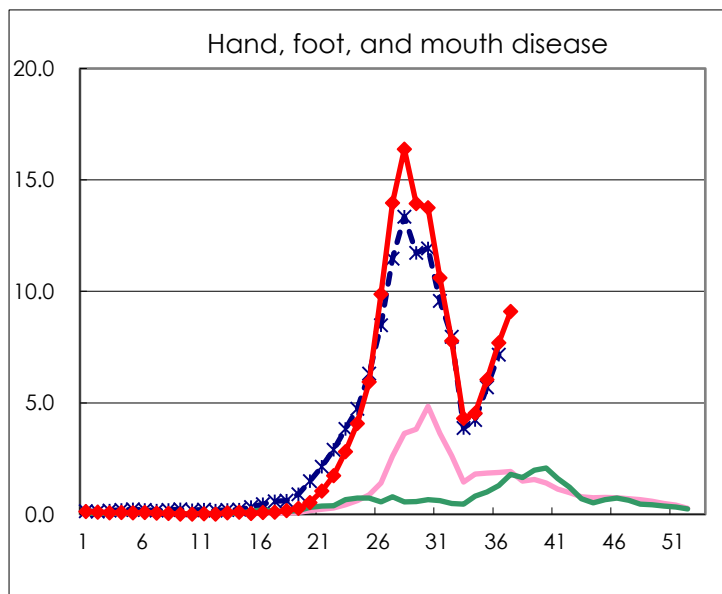
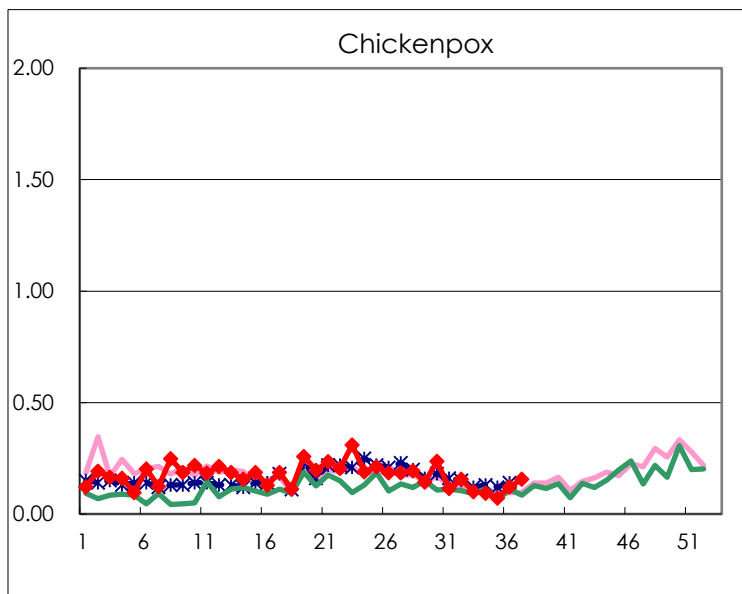
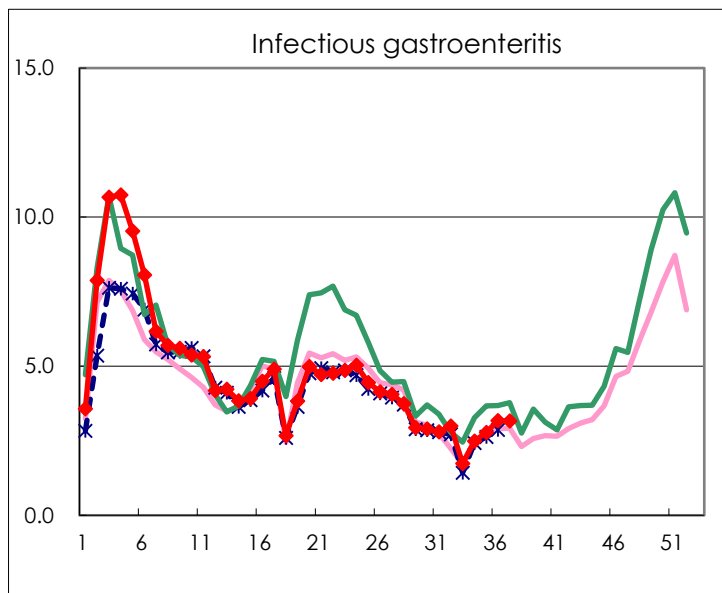
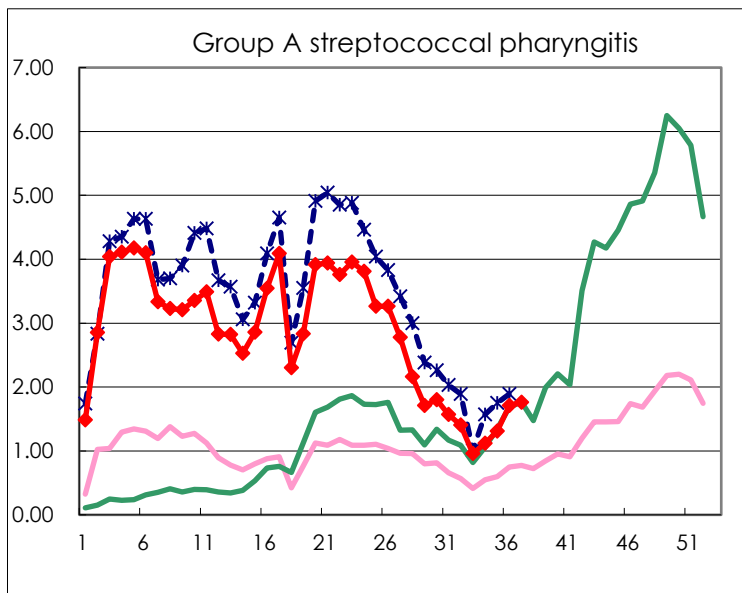
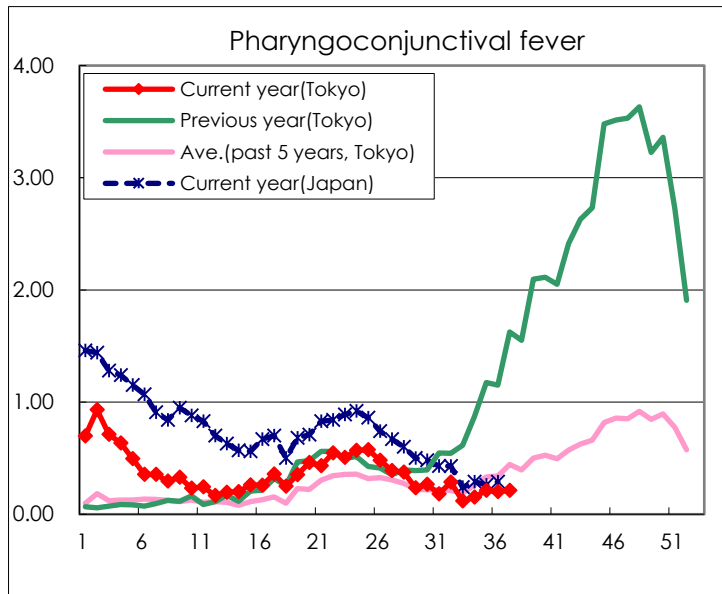
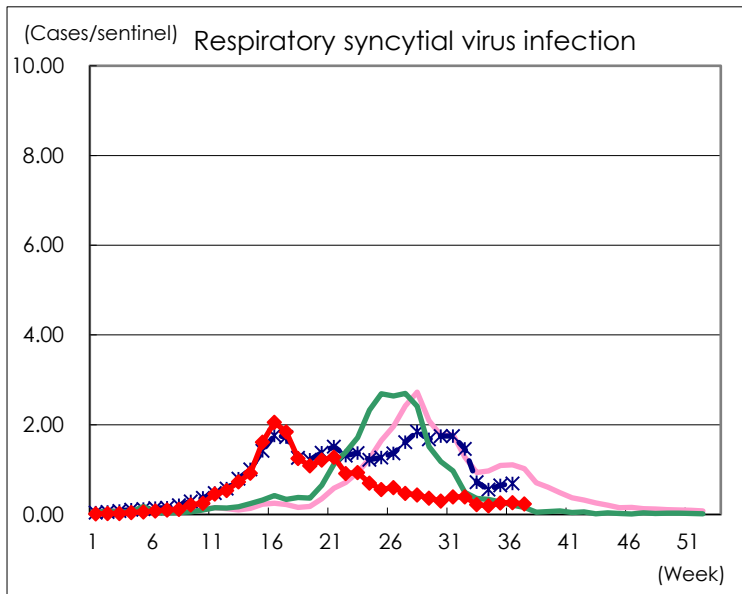
Category	Diseases	Tokyo				
		34th	35th	36th	37th	Cum 2024
V	Amebiasis	4	1	2	1	78
	Viral hepatitis(excluding hepatitis A and E)				2	28
	CRE infection	5	6	8	4	133
	Acute Flaccid Paralysis (excluding Acute poliomyelitis)					4
	Acute encephalitis(excluding JE and WNE)	2		1		32
	Cryptosporidiosis		1	3		10
	Creutzfeldt-Jakob disease	1				9
	Severe invasive streptococcal infections(TSLS)	5	4	5	1	202
	Acquired immunodeficiency syndrome (AIDS)	5	5	9	11	207
	Giardiasis		1			10
	Invasive <i>Haemophilus influenzae</i> disease		1	1	1	47
	Invasive meningococcal disease			1		7
	Invasive pneumococcal disease	4	5	2		195
	Varicella (limited to hospitalized case)	3		2		48
	Congenital rubella syndrome					
	Syphilis	78	97	73	65	2,618
	Disseminated cryptococcosis					16
	Tetanus					1
	Vancomycin-resistant <i>S. aureus</i> infection					
	Vancomycin-resistant <i>Enterococcus</i> infection					6
	Pertussis	14	17	10	4	159
	Rubella					1
	Measles					8
MDRA infection					1	

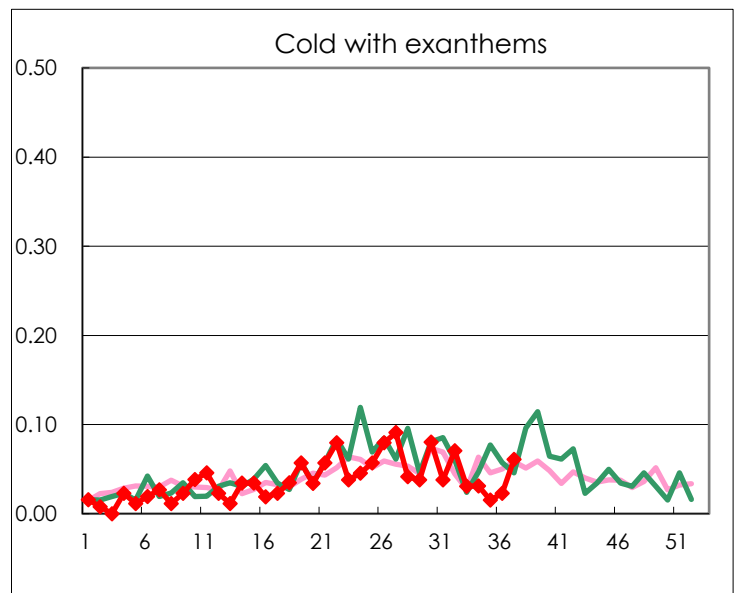
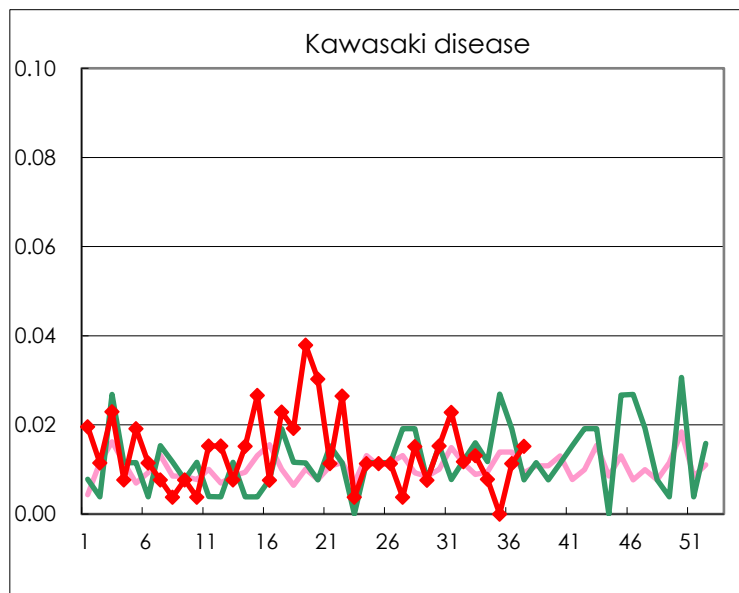
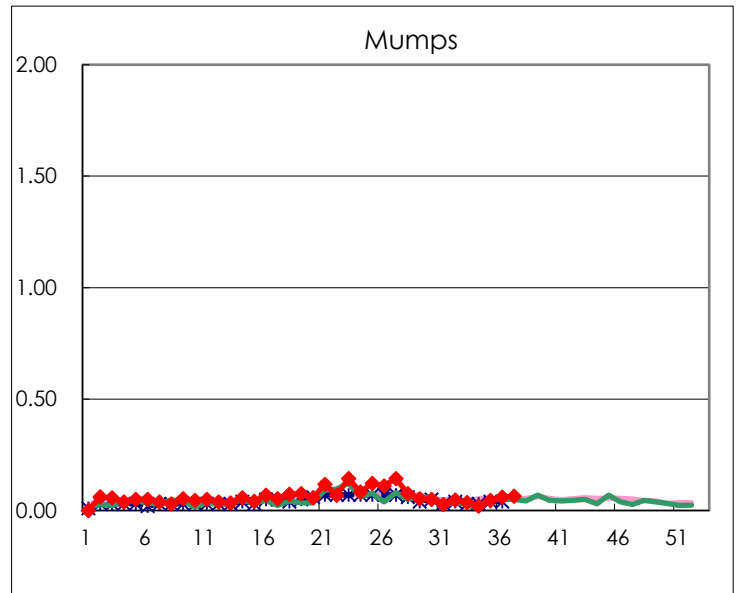
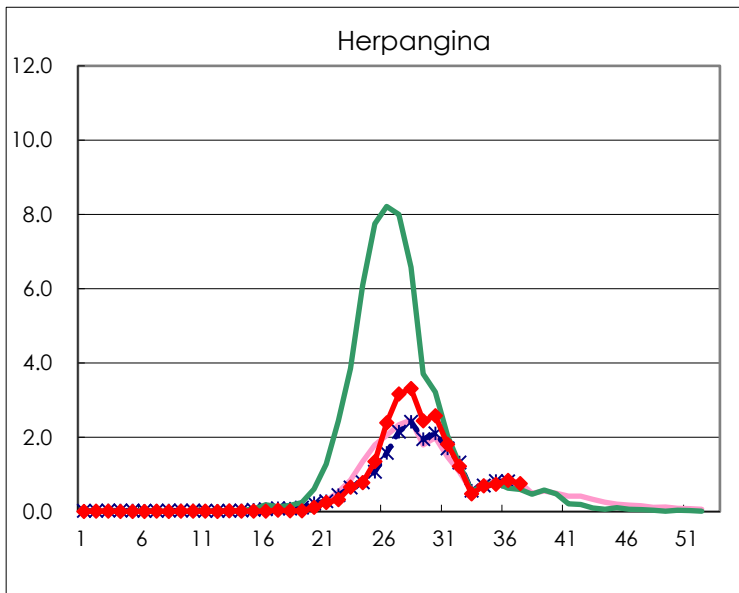
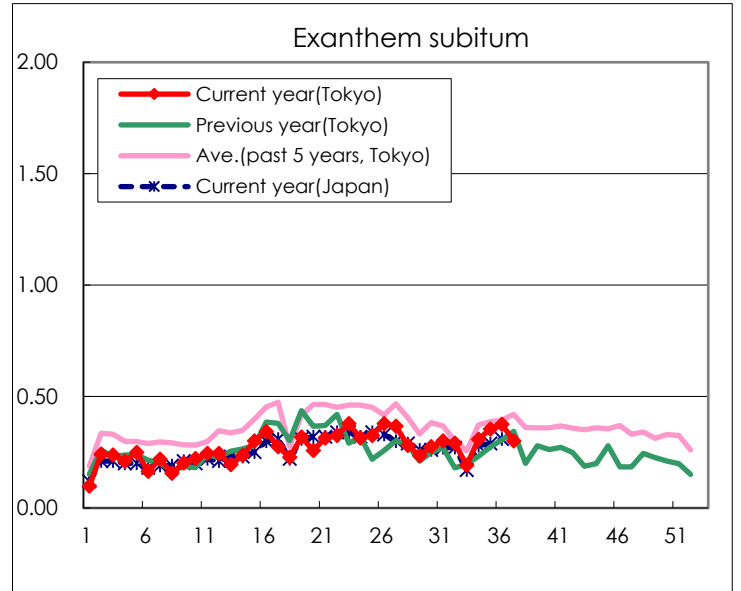
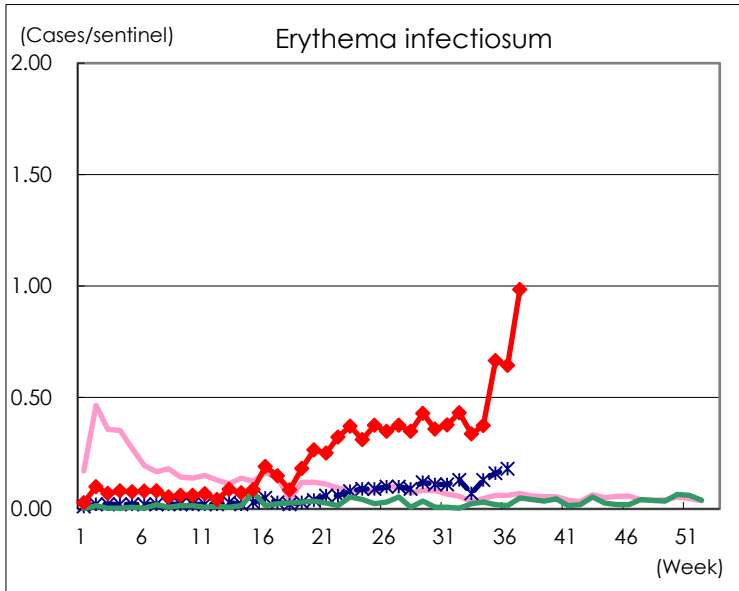
Number of patients with the diseases to be reported
by the designated clinics and hospitals

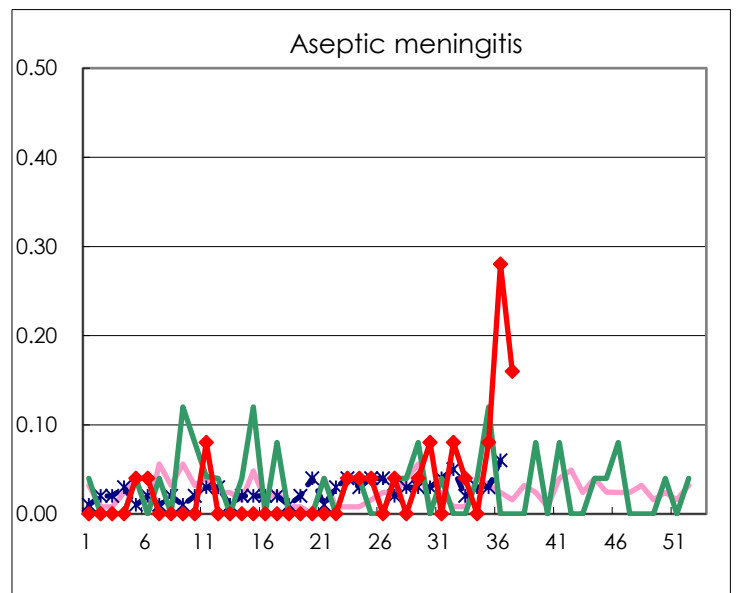
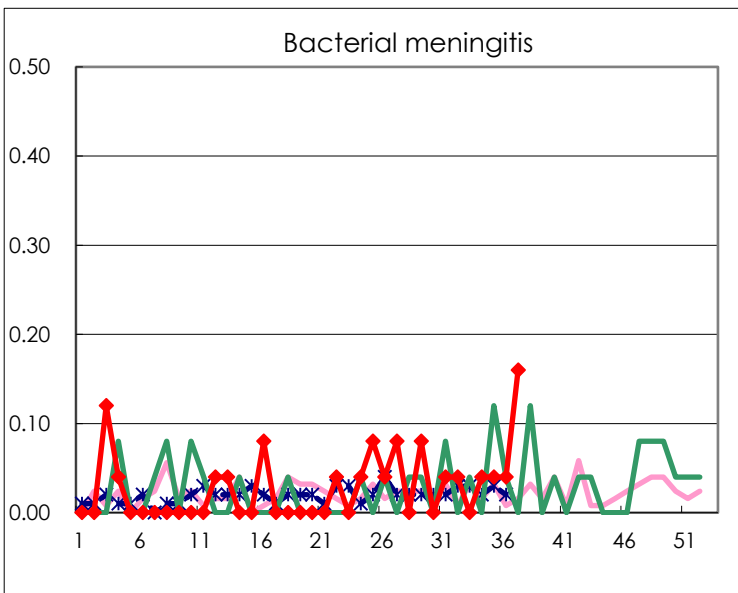
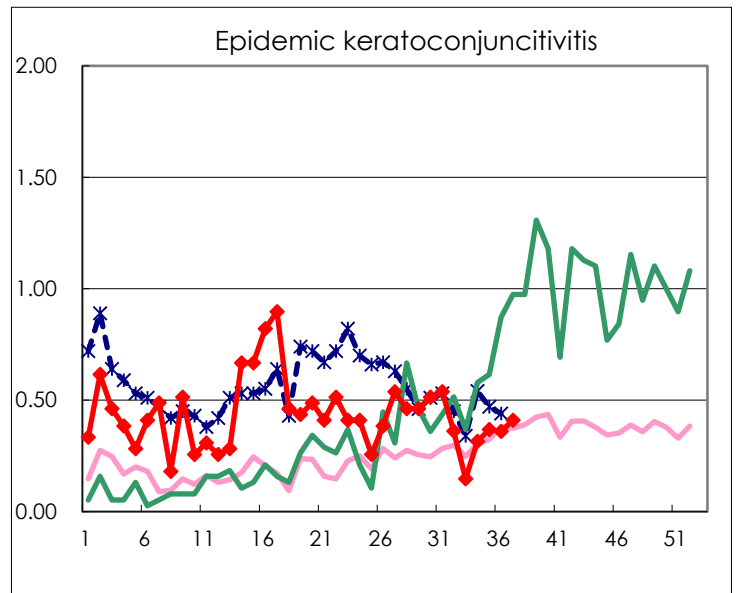
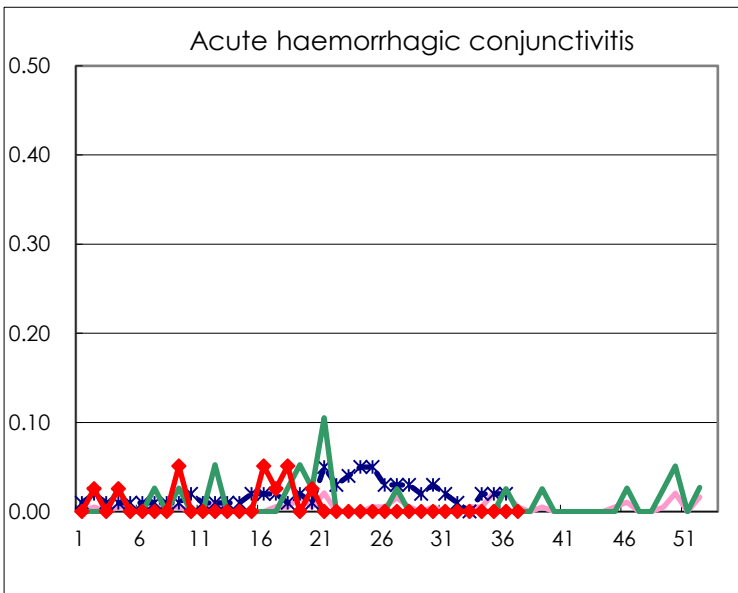
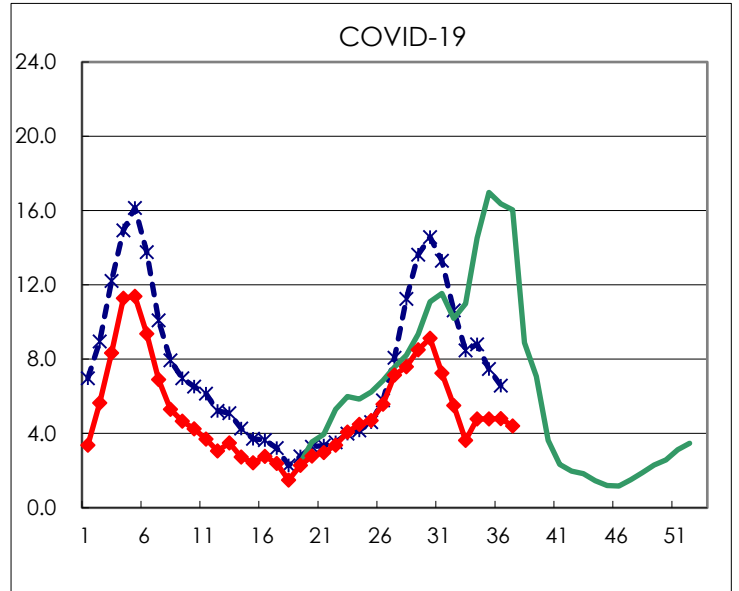
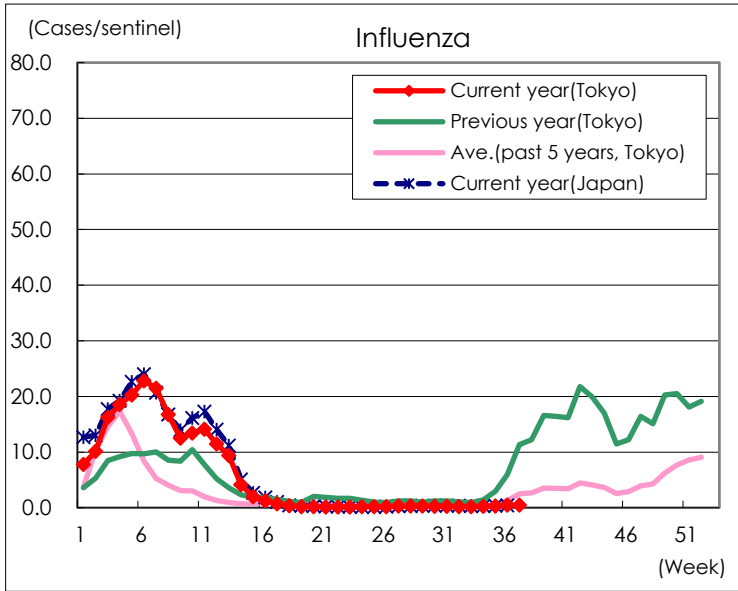
Diseases	Tokyo				
	34th	35th	36th	37th	/sentinel
Respiratory syncytial virus infection	50	68	69	63	0.24
Pharyngoconjunctival fever	39	56	53	56	0.21
Group A streptococcal pharyngitis	288	344	451	463	1.76
Infectious gastroenteritis	640	730	839	834	3.17
Chickenpox	24	19	32	41	0.16
Hand, foot, and mouth disease	1,166	1,589	2,033	2,394	9.10
Erythema infectiosum	96	175	170	259	0.98
Exanthem subitum	79	93	99	79	0.30
Herpangina	179	194	222	198	0.75
Mumps	5	12	16	17	0.06
Kawasaki disease	2		3	4	0.02
Cold with exanthems	8	4	6	16	0.06
Influenza	108	130	208	201	0.48
COVID-19	1,962	1,987	2,011	1,842	4.41
Acute hemorrhagic conjunctivitis					
Epidemic keratoconjunctivitis	12	14	14	16	0.41
Bacterial meningitis	1	1	1	4	0.16
Aseptic meningitis		2	7	4	0.16
Mycoplasma pneumonia	38	52	32	41	1.64
Chlamydial pneumonia (excluding psittacosis)	1	1			
Infectious gastroenteritis (only by Rotavirus)	1	1			
Influenza-Associated Hospitalizations	2	9	3	7	0.28
COVID-19-Associated Hospitalizations	143	145	151	133	5.32

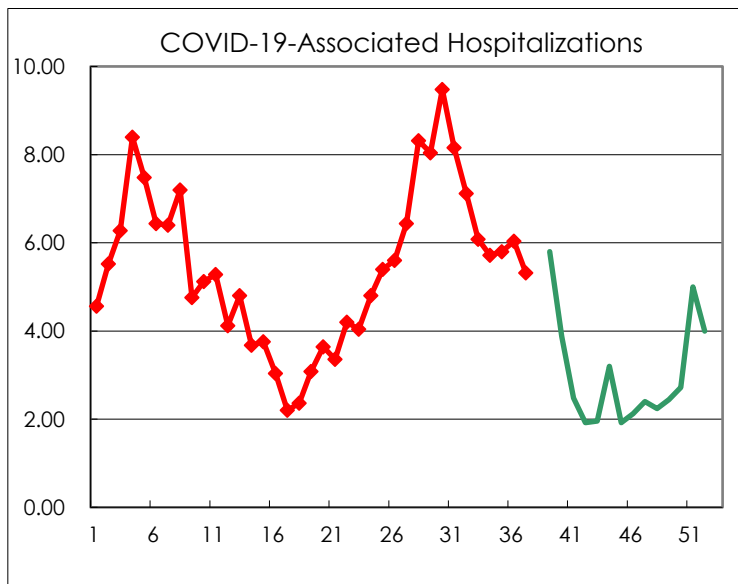
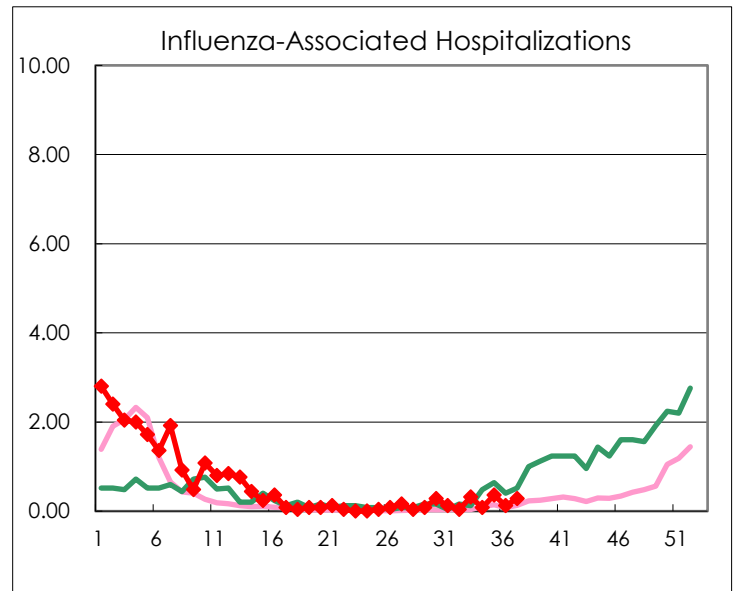
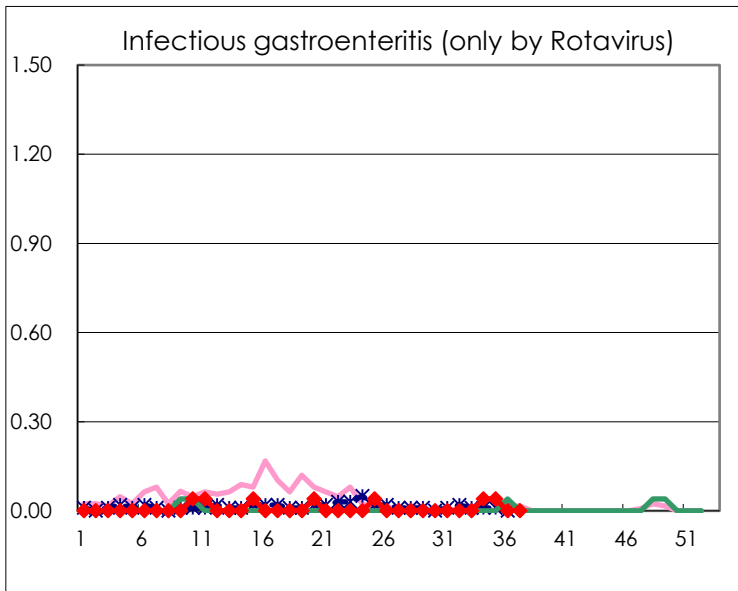
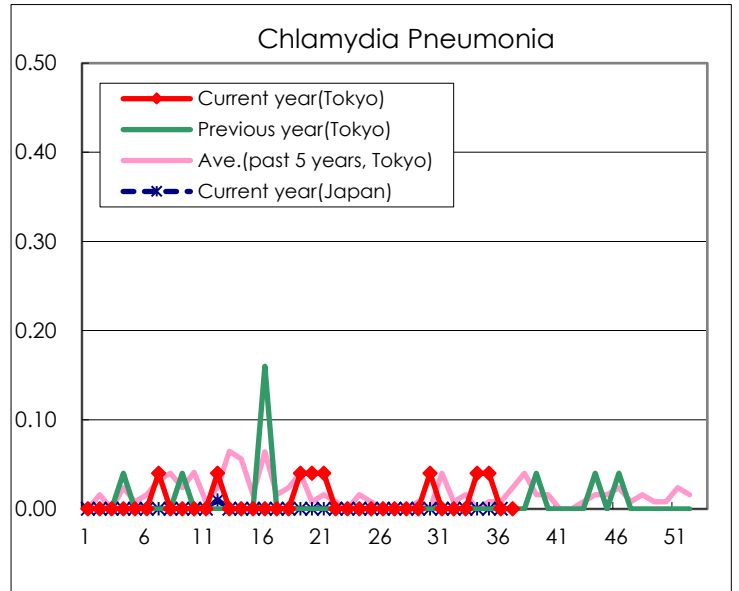
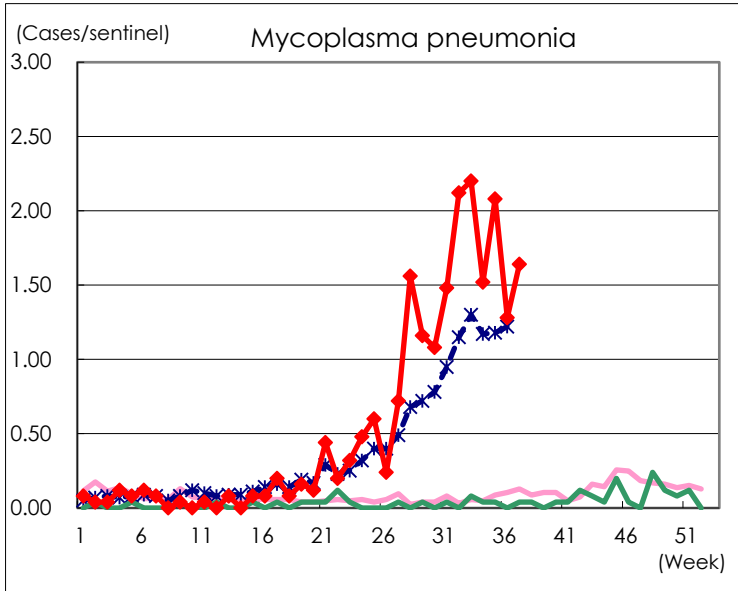
(Blank means 0.)

Disease Trend Graph (weekly reported cases per sentinel in comparison)









Number of sentinel facilities for weekly reporting		
Types of sentinels	Number of sentinels	Sentinels having reported
Pediatric	264	263
Influenza COVID-19	419	418
Ophthalmic	39	39
Specially-designated	25	25