
INFECTIOUS DISEASES WEEKLY REPORT

TOKYO **iDWR**

Tokyo Metropolitan Infectious Disease Surveillance Center

26 September 2024 / Number 38
(9/16 ~ 9/22)

Surveillance System in Tokyo, Japan

The infectious diseases which all physicians must report
All physicians must report to health centers the incidence of the diseases which are shown at page one. Health centers electronically report the individual cases to Tokyo Metropolitan Infectious Disease Surveillance Center.

The infectious diseases required to be reported by the sentinels
The numbers of patients who visit the sentinel clinics or hospitals during a week are reported to health centers in Tokyo. And they electronically report the numbers to Tokyo Metropolitan Infectious Disease Surveillance Center. We have about 500 sentinel clinics and hospitals in Tokyo.

Tokyo Metropolitan Institute of Public Health

TEL:81-3-3363-3213 FAX:81-3-5332-7365

e-mail:tmiph@section.metro.tokyo.jp

URL:idsc.tmiph.metro.tokyo.lg.jp/

Number of patients with the diseases which all physicians must report

Category	Diseases	Tokyo				
		35th	36th	37th	38th	Cum 2024
I	Ebola hemorrhagic fever					
	Crimean-Congo hemorrhagic fever					
	Smallpox					
	South American hemorrhagic fever					
	Plague					
	Marburg disease					
	Lassa fever					
II	Acute poliomyelitis					
	Tuberculosis	51	53	49	44	1,556
	Diphtheria					
	Severe Acute Respiratory Syndrome(SARS)					
	Middle East Respiratory Syndrome (MERS)					
	Avian influenza H5N1					
	Avian influenza H7N9					
III	Cholera					2
	Shigellosis	7				19
	Enterohemorrhagic Escherichia coli infection	21	18	17	16	318
	Typhoid fever	1			1	5
	Paratyphoid fever					2
IV	Hepatitis E	4	3	2	7	109
	West Nile fever					
	Hepatitis A			1	1	17
	Echinococcosis					1
	Mpox					12
	Yellow fever					
	Psittacosis					
	Omsk hemorrhagic fever					
	Relapsing fever					
	Kyasanur forest disease					
	Q fever					
	Rabies					
	Coccidioidomycosis		1			2
	Zika virus infection					
	Severe Fever with Thrombocytopenia Syndrome					
	Hemorrhagic fever with renal syndrome					
	Western equine encephalitis					
	Tick-borne encephalitis					
	Anthrax					
	Chikungunya fever					
	Scrub typhus(Tsutsugamushi disease)					
	Dengue fever	3	4	1	1	50
	Eastern equine encephalitis					
	Avian influenza (excluding H5N1 and H7N9)					
	Nipah virus infection					
	Japanese spotted fever					
	Japanese encephalitis					
	Hantavirus pulmonary syndrome					
	Herpes B virus infection					
	Glanders					
	Brucellosis					
	Venezuelan equine encephalitis					
	Hendra virus infection					
	Epidemic typhus					
	Botulism					
	Malaria				1	9
	Tularemia					
Lyme disease				1	1	
Lyssavirus infection(excluding rabies)						
Rift valley fever						
Melioidosis						
Legionellosis	14	13	11	5	159	
Leptospirosis					3	
Rocky mountain spotted fever						

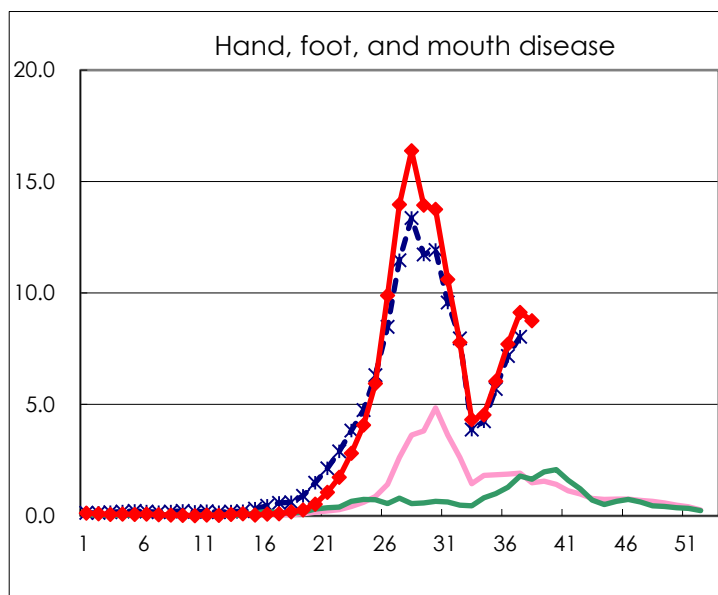
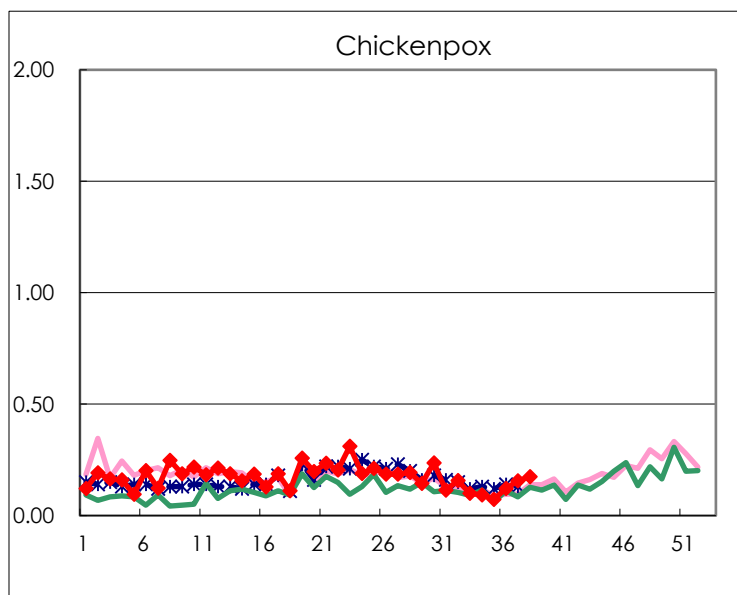
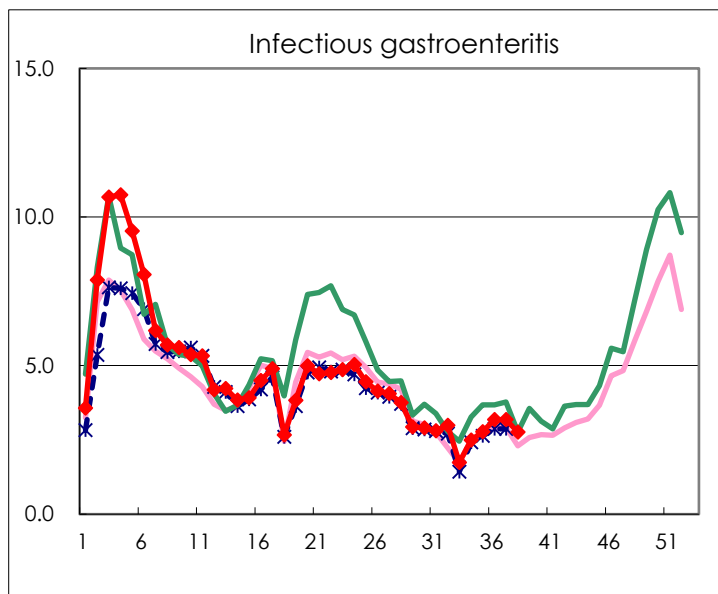
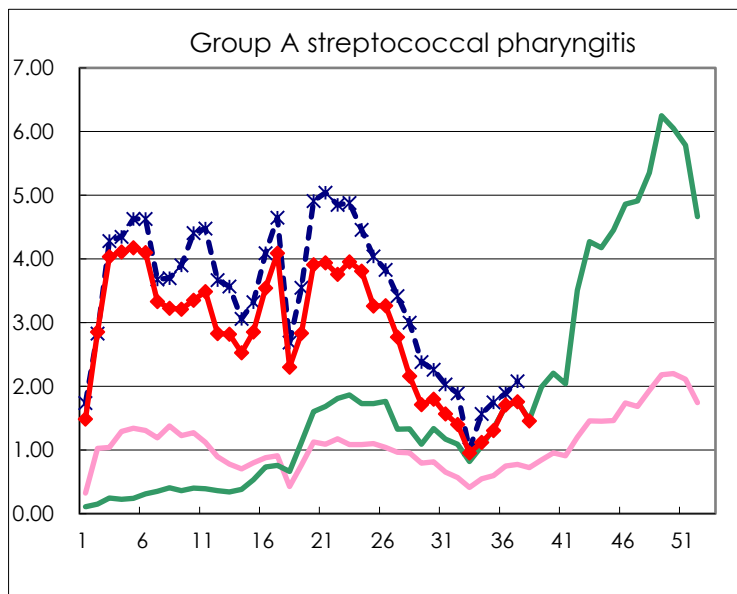
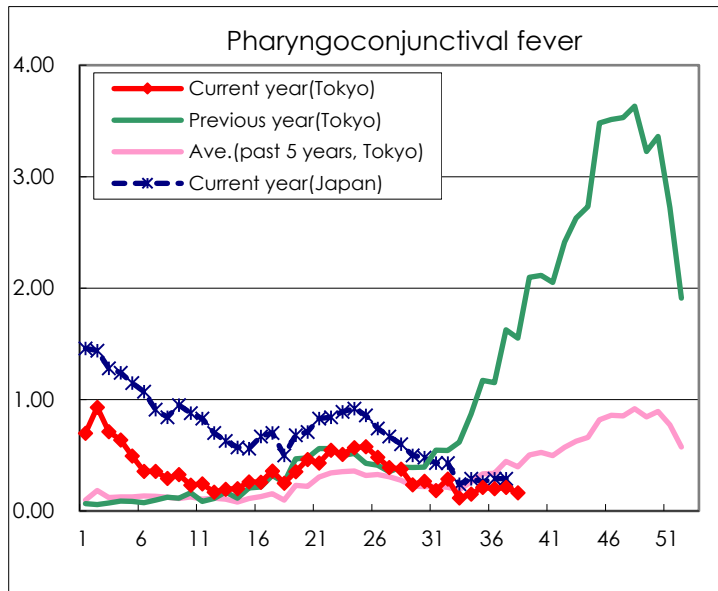
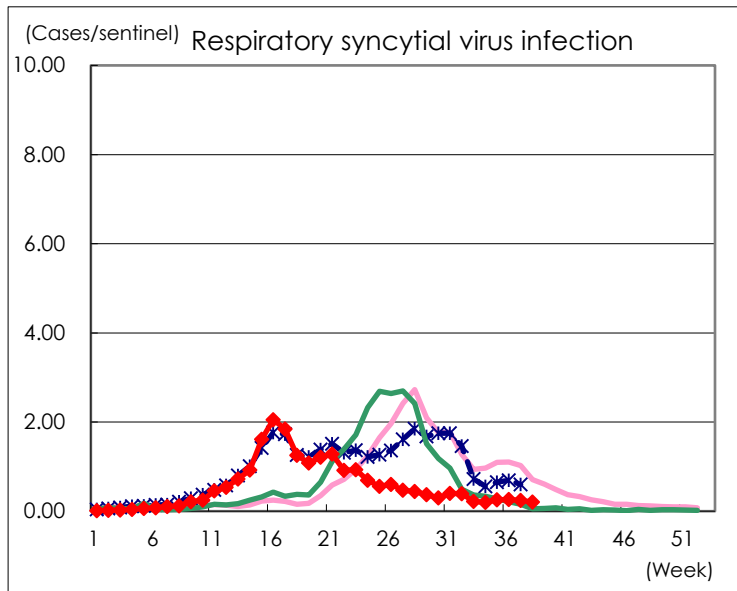
Category	Diseases	Tokyo				
		35th	36th	37th	38th	Cum 2024
V	Amebiasis	1	2	1	2	80
	Viral hepatitis(excluding hepatitis A and E)			2	2	30
	CRE infection	6	8	5	9	143
	Acute Flaccid Paralysis (excluding Acute poliomyelitis)					4
	Acute encephalitis(excluding JE and WNE)		1			32
	Cryptosporidiosis	1	3			10
	Creutzfeldt-Jakob disease					9
	Severe invasive streptococcal infections(TSLS)	4	5	1	2	204
	Acquired immunodeficiency syndrome (AIDS)	5	9	12	3	211
	Giardiasis	1				10
	Invasive <i>Haemophilus influenzae</i> disease	1	1	1		47
	Invasive meningococcal disease		1			7
	Invasive pneumococcal disease	5	2		2	197
	Varicella (limited to hospitalized case)		2			48
	Congenital rubella syndrome					
	Syphilis	97	74	66	93	2,713
	Disseminated cryptococcosis				1	17
	Tetanus					1
	Vancomycin-resistant <i>S. aureus</i> infection					
	Vancomycin-resistant Enterococcus infection					6
	Pertussis	17	11	5	12	173
	Rubella					1
	Measles				1	9
MDRA infection					1	

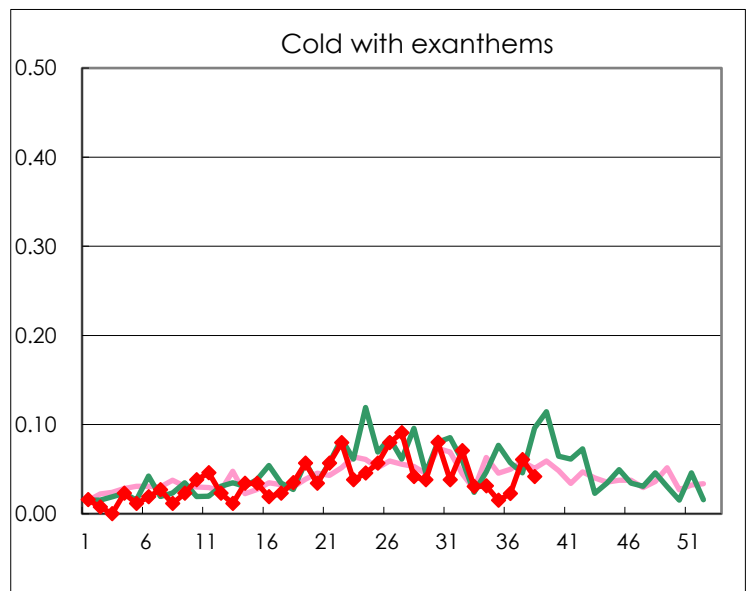
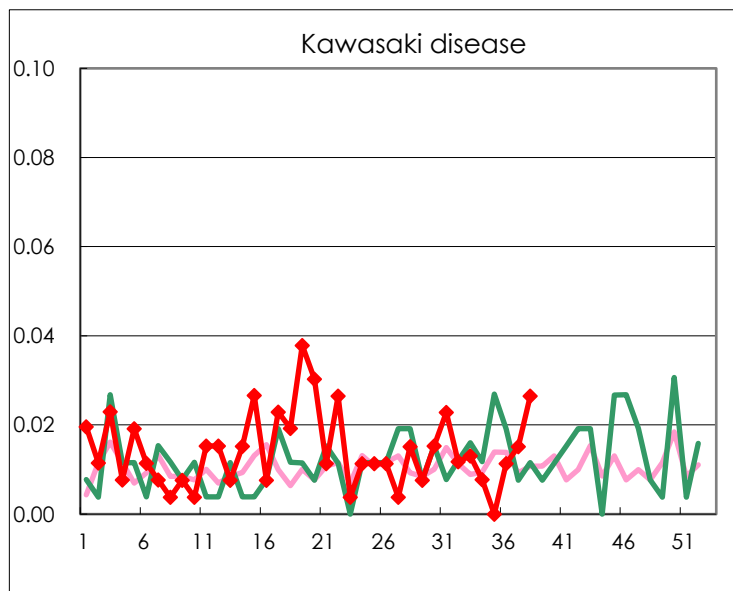
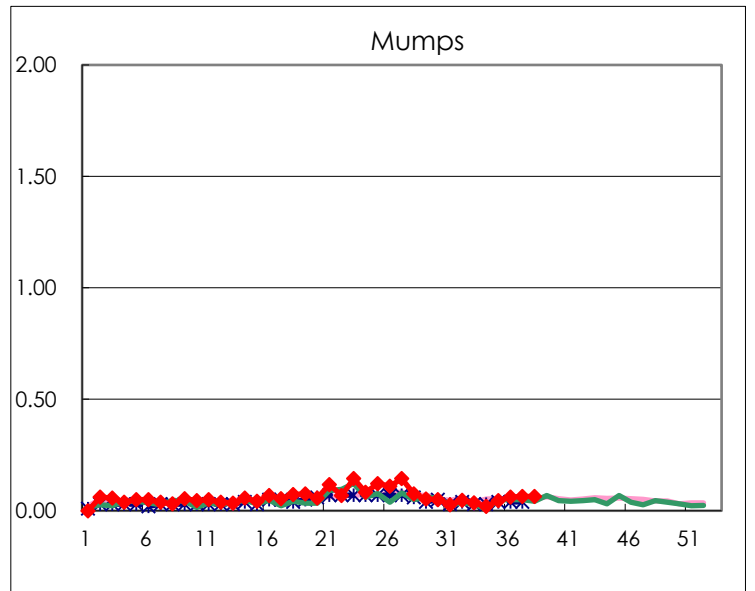
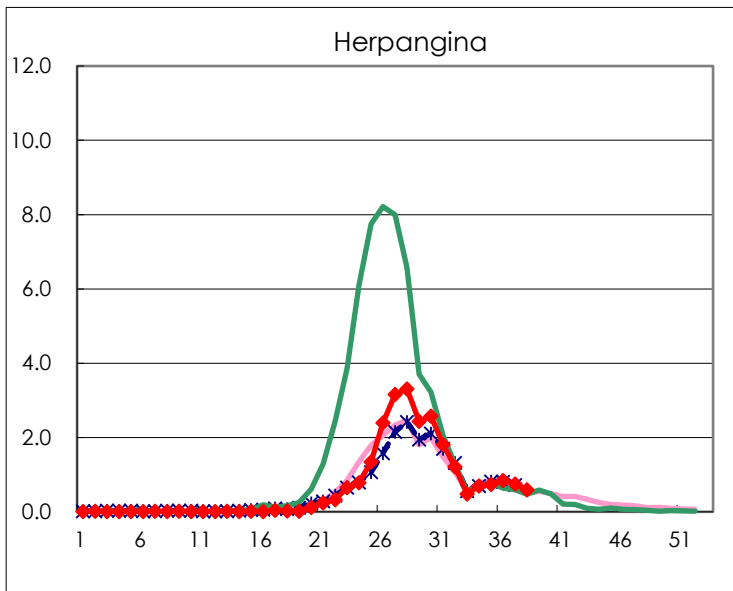
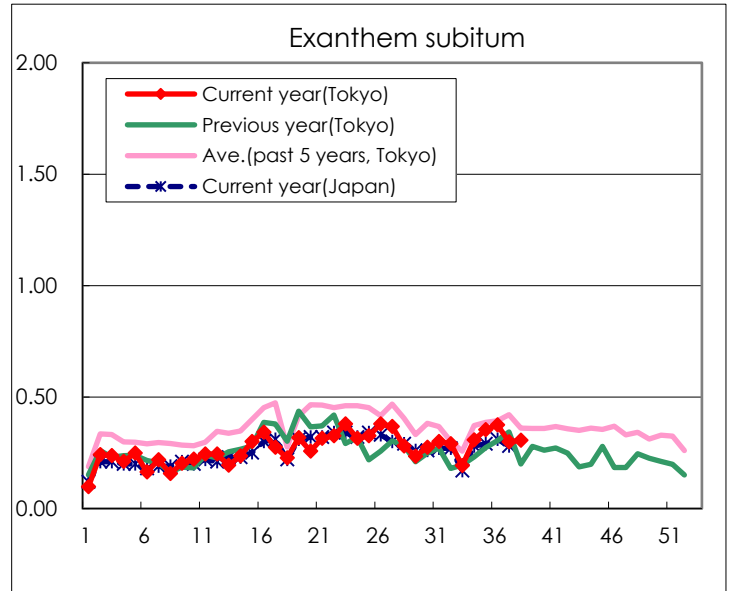
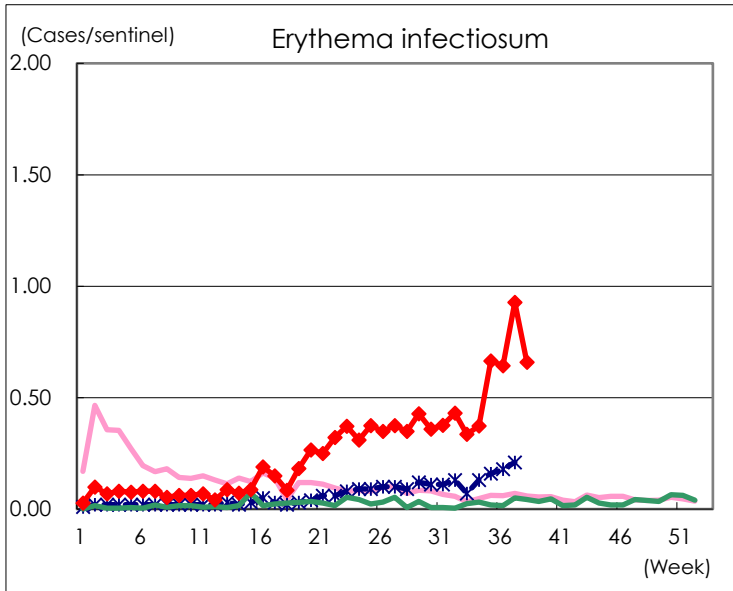
Number of patients with the diseases to be reported
by the designated clinics and hospitals

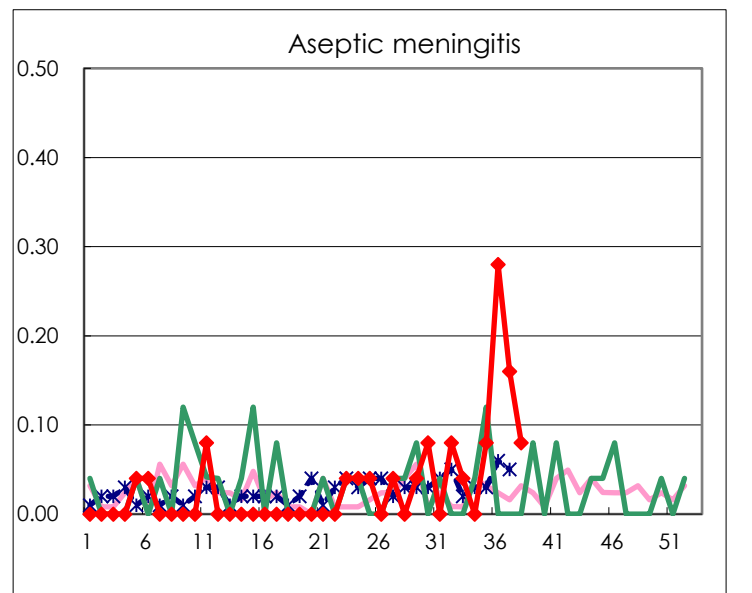
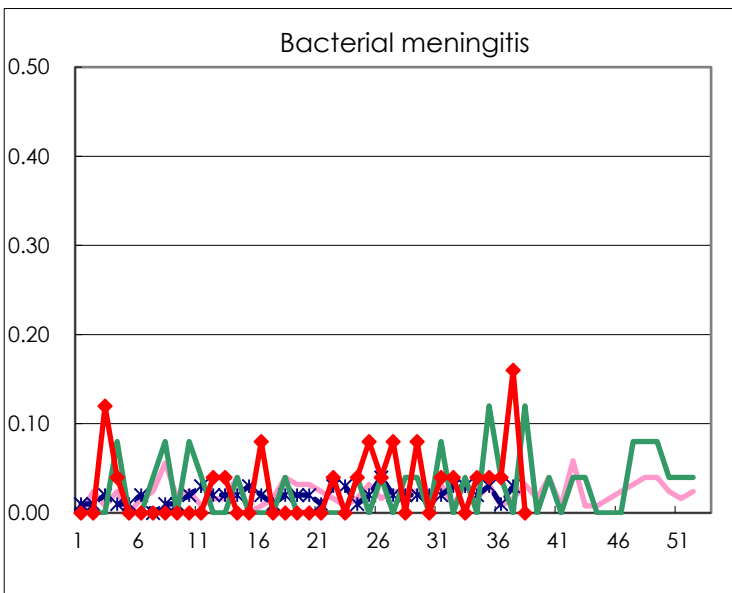
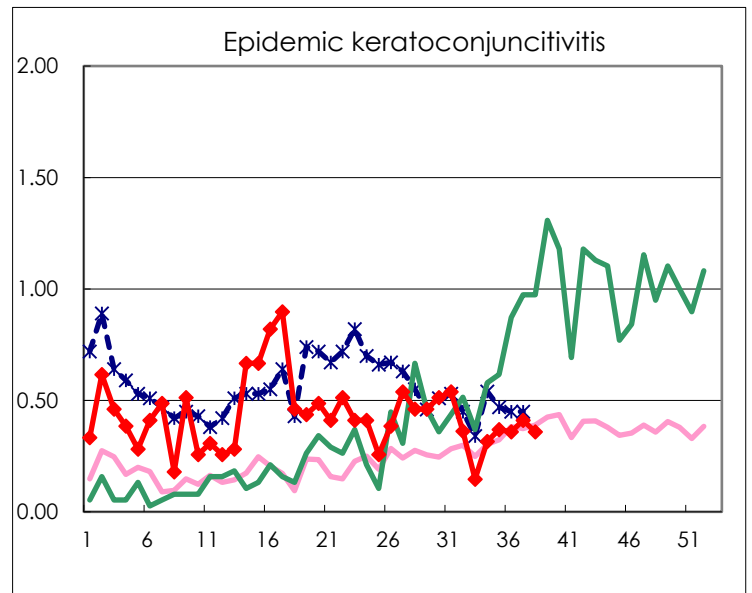
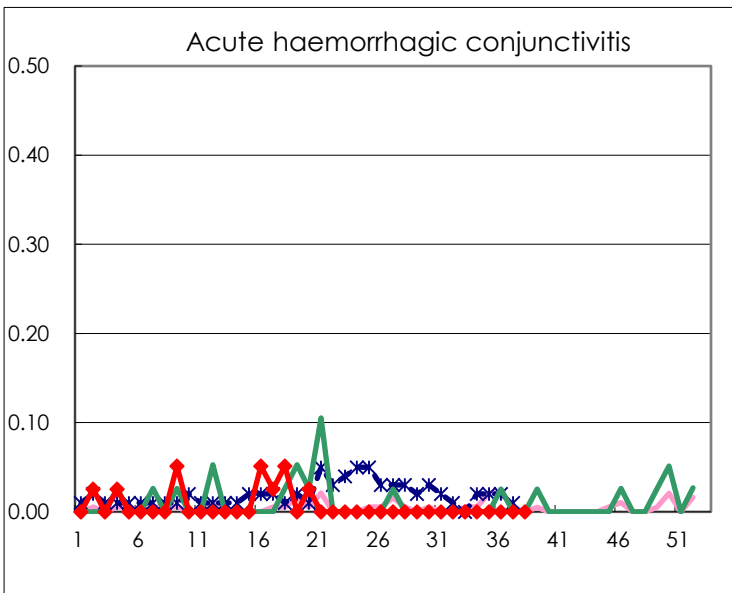
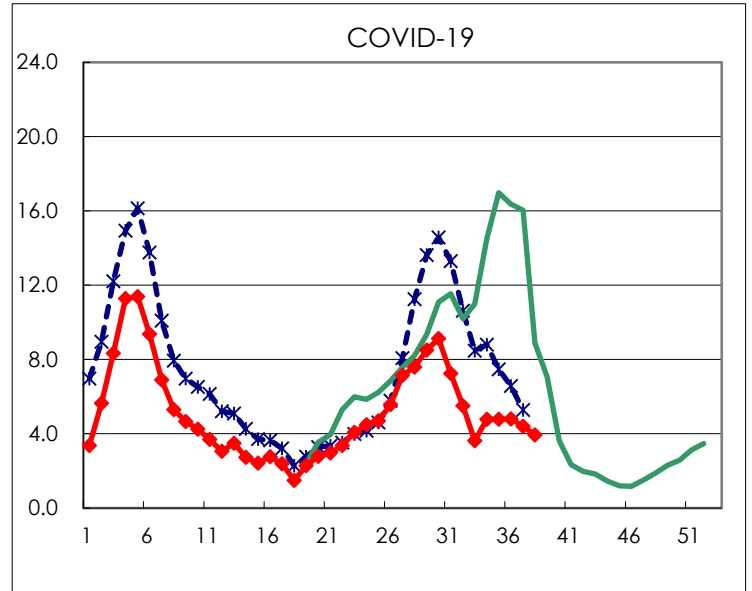
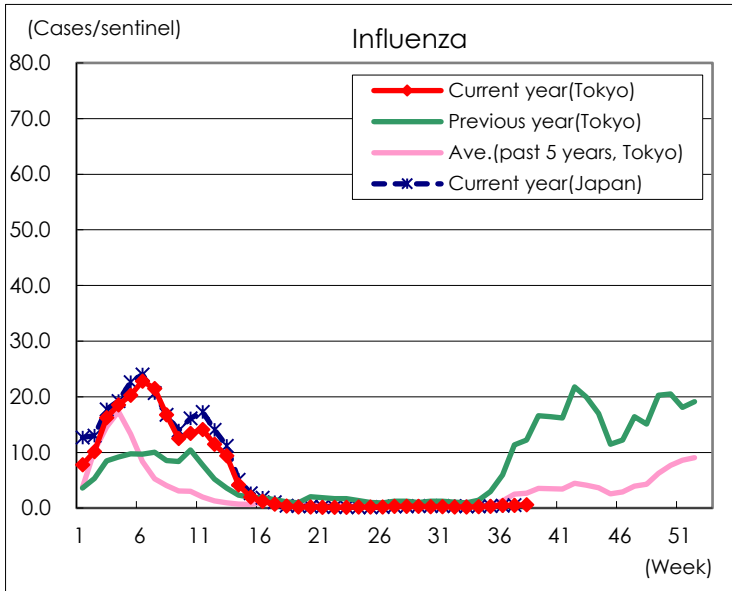
Diseases	Tokyo				
	35th	36th	37th	38th	/sentinel
Respiratory syncytial virus infection	68	69	63	54	0.20
Pharyngoconjunctival fever	56	53	56	43	0.16
Group A streptococcal pharyngitis	344	451	464	385	1.46
Infectious gastroenteritis	730	839	839	729	2.76
Chickenpox	19	32	41	46	0.17
Hand, foot, and mouth disease	1,589	2,033	2,411	2,312	8.76
Erythema infectiosum	175	170	245	174	0.66
Exanthem subitum	93	99	79	81	0.31
Herpangina	194	222	198	156	0.59
Mumps	12	16	17	17	0.06
Kawasaki disease		3	4	7	0.03
Cold with exanthems	4	6	16	11	0.04
Influenza	130	208	202	246	0.59
COVID-19	1,987	2,011	1,843	1,649	3.94
Acute hemorrhagic conjunctivitis					
Epidemic keratoconjunctivitis	14	14	16	14	0.36
Bacterial meningitis	1	1	4		
Aseptic meningitis	2	7	4	2	0.08
Mycoplasma pneumonia	52	32	41	70	2.80
Chlamydial pneumonia (excluding psittacosis)	1				
Infectious gastroenteritis (only by Rotavirus)	1				
Influenza-Associated Hospitalizations	9	3	7	3	0.12
COVID-19-Associated Hospitalizations	145	151	133	96	3.84

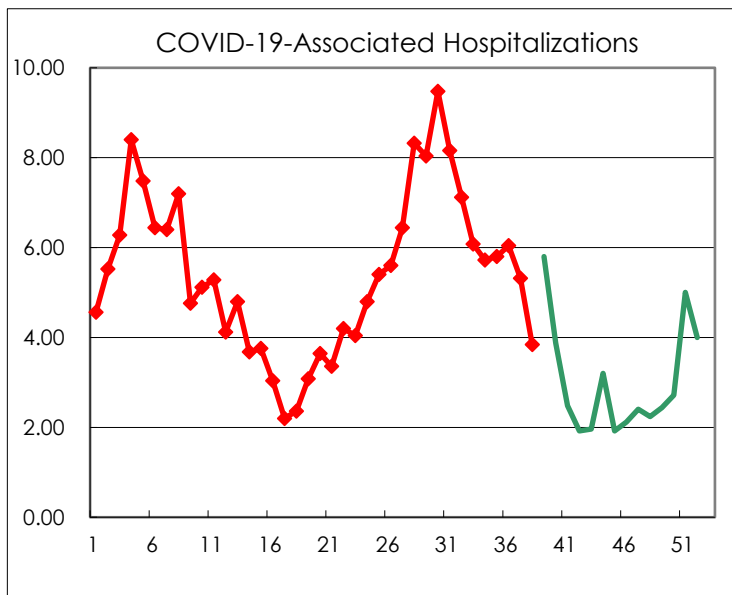
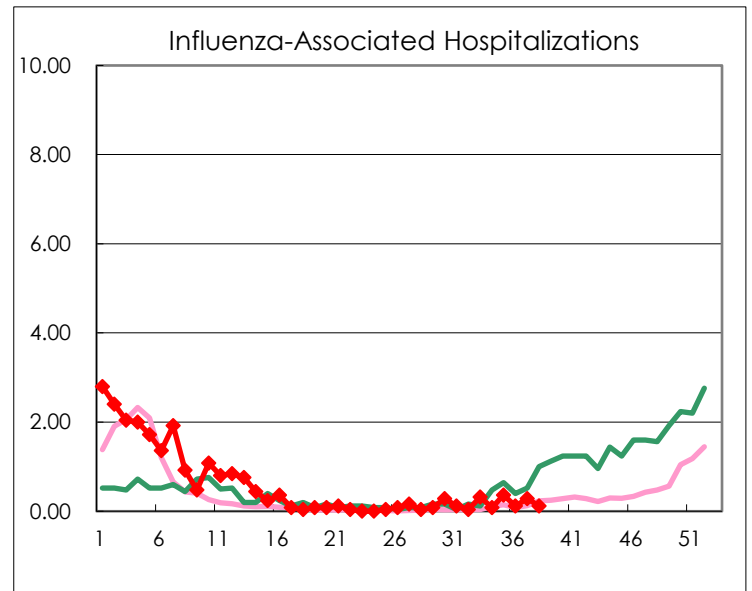
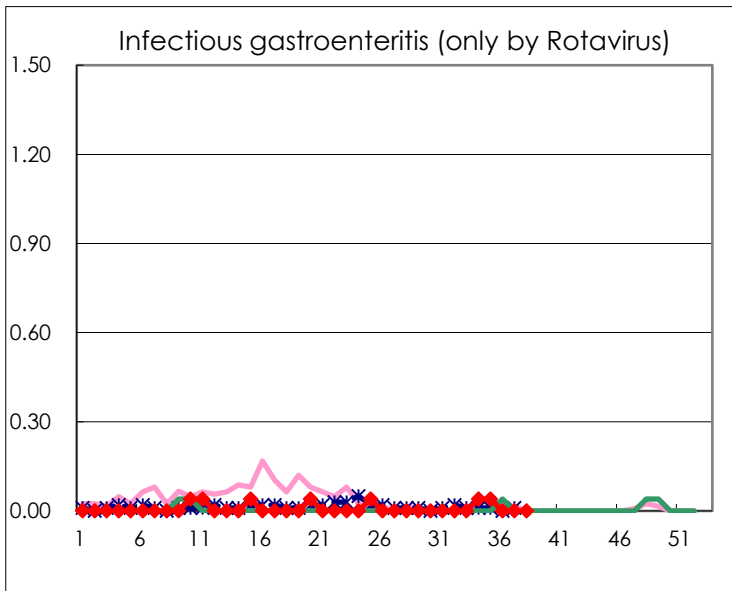
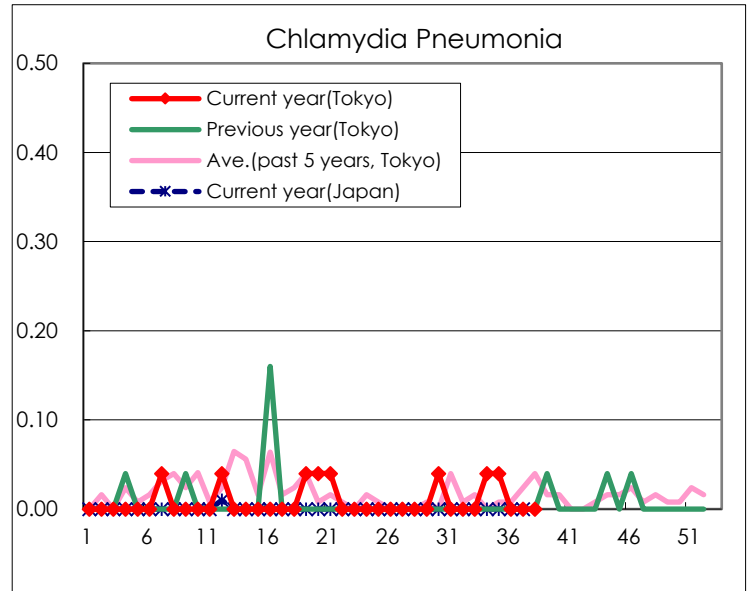
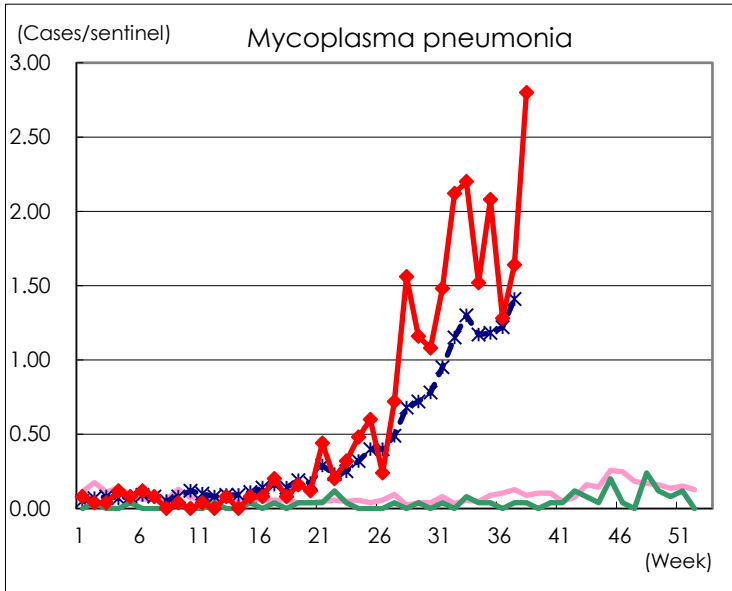
(Blank means 0.)

Disease Trend Graph (weekly reported cases per sentinel in comparison)









Number of sentinel facilities for weekly reporting		
Types of sentinels	Number of sentinels	Sentinels having reported
Pediatric	264	264
Influenza COVID-19	419	419
Ophthalmic	39	39
Specially-designated	25	25