
INFECTIOUS DISEASES WEEKLY REPORT

TOKYO iDWR

Tokyo Metropolitan Infectious Disease Surveillance Center

3 October 2024 / Number 39
(9/23 ~ 9/29)

Surveillance System in Tokyo, Japan

The infectious diseases which all physicians must report
All physicians must report to health centers the incidence of the diseases which are shown at page one. Health centers electronically report the individual cases to Tokyo Metropolitan Infectious Disease Surveillance Center.

The infectious diseases required to be reported by the sentinels
The numbers of patients who visit the sentinel clinics or hospitals during a week are reported to health centers in Tokyo. And they electronically report the numbers to Tokyo Metropolitan Infectious Disease Surveillance Center. We have about 500 sentinel clinics and hospitals in Tokyo.

Tokyo Metropolitan Institute of Public Health

TEL:81-3-3363-3213 FAX:81-3-5332-7365

e-mail:tmiph@section.metro.tokyo.jp

URL:idsc.tmiph.metro.tokyo.lg.jp/

Number of patients with the diseases which all physicians must report

Category	Diseases	Tokyo				
		36th	37th	38th	39th	Cum 2024
I	Ebola hemorrhagic fever					
	Crimean-Congo hemorrhagic fever					
	Smallpox					
	South American hemorrhagic fever					
	Plague					
	Marburg disease					
	Lassa fever					
II	Acute poliomyelitis					
	Tuberculosis	53	50	44	27	1,584
	Diphtheria					
	Severe Acute Respiratory Syndrome(SARS)					
	Middle East Respiratory Syndrome (MERS)					
	Avian influenza H5N1					
	Avian influenza H7N9					
III	Cholera					2
	Shigellosis					19
	Enterohemorrhagic Escherichia coli infection	18	17	18	16	336
	Typhoid fever			1		5
	Paratyphoid fever					2
IV	Hepatitis E	3	2	7	2	111
	West Nile fever					
	Hepatitis A		1	1		17
	Echinococcosis					1
	Mpox					12
	Yellow fever					
	Psittacosis					
	Omsk hemorrhagic fever					
	Relapsing fever					
	Kyasanur forest disease					
	Q fever					
	Rabies					
	Coccidioidomycosis	1				2
	Zika virus infection					
	Severe Fever with Thrombocytopenia Syndrome					
	Hemorrhagic fever with renal syndrome					
	Western equine encephalitis					
	Tick-borne encephalitis					
	Anthrax					
	Chikungunya fever					
	Scrub typhus(Tsutsugamushi disease)					
	Dengue fever	5	1	1	4	55
	Eastern equine encephalitis					
	Avian influenza (excluding H5N1 and H7N9)					
	Nipah virus infection					
	Japanese spotted fever					
	Japanese encephalitis					
	Hantavirus pulmonary syndrome					
	Herpes B virus infection					
	Glanders					
	Brucellosis					
	Venezuelan equine encephalitis					
	Hendra virus infection					
	Epidemic typhus					
	Botulism					
	Malaria			1		9
	Tularemia					
	Lyme disease			1		1
	Lyssavirus infection(excluding rabies)					
	Rift valley fever					
Melioidosis						
Legionellosis	13	11	5	3	162	
Leptospirosis				1	4	
Rocky mountain spotted fever						

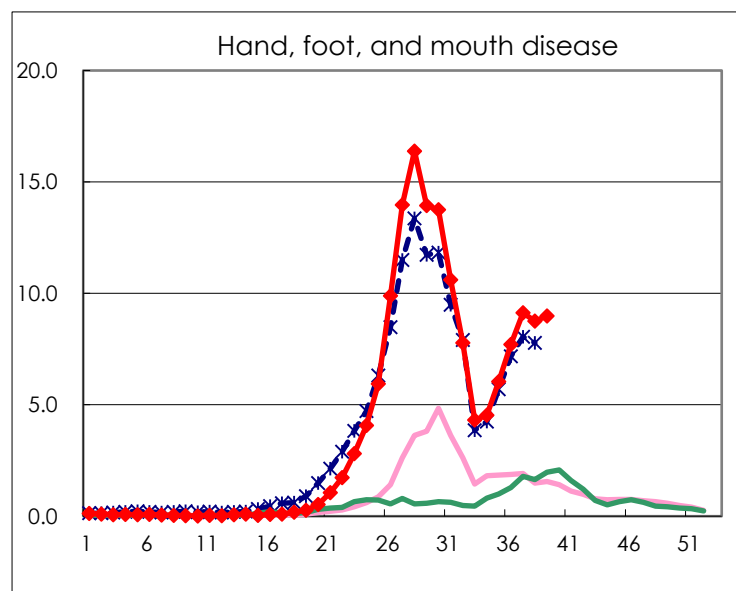
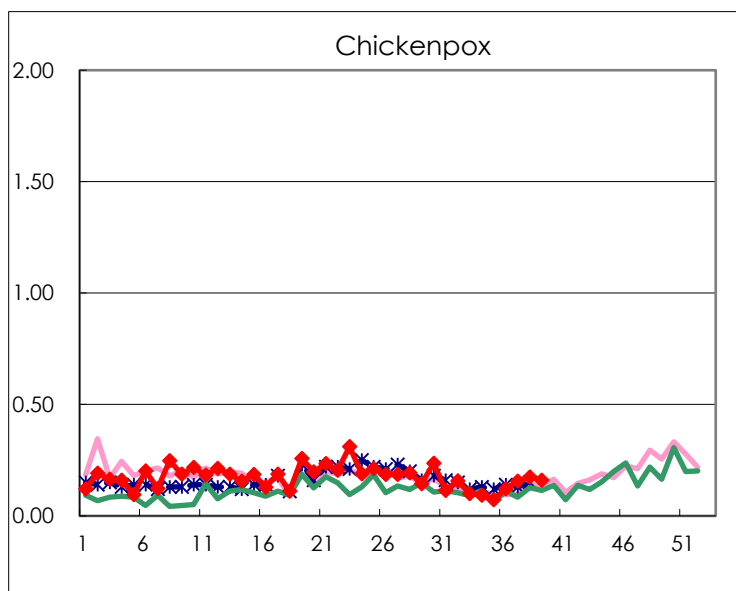
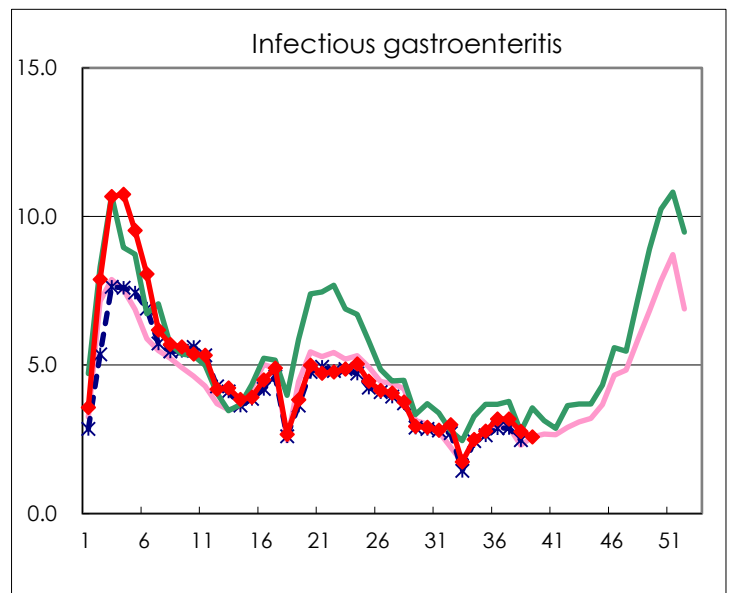
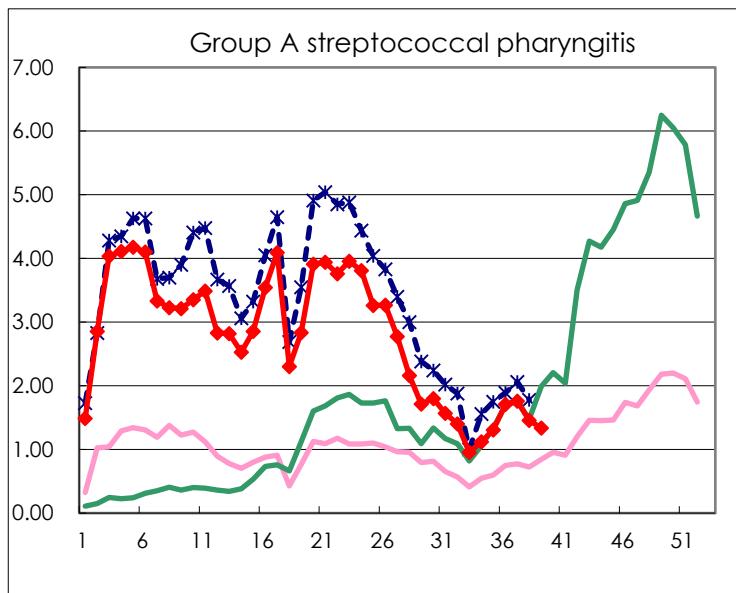
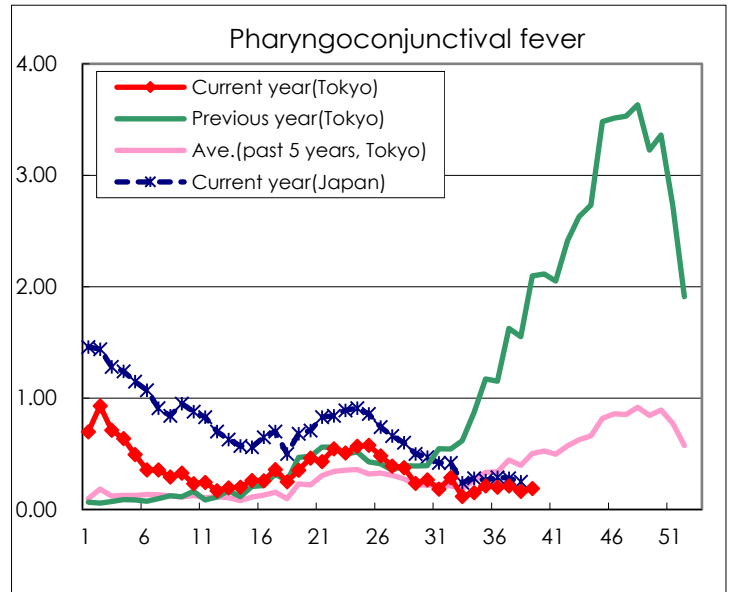
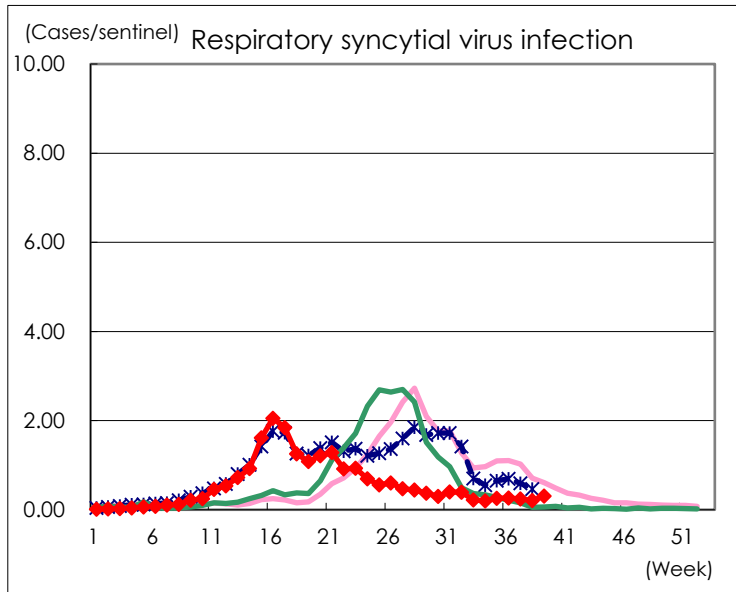
Category	Diseases	Tokyo				
		36th	37th	38th	39th	Cum 2024
V	Amebiasis	2	1	2	2	82
	Viral hepatitis(excluding hepatitis A and E)		2	2		31
	CRE infection	8	5	9	2	145
	Acute Flaccid Paralysis (excluding Acute poliomyelitis)					4
	Acute encephalitis(excluding JE and WNE)	1				32
	Cryptosporidiosis	3				10
	Creutzfeldt-Jakob disease					9
	Severe invasive streptococcal infections(TSLS)	5	1	2	2	206
	Acquired immunodeficiency syndrome (AIDS)	9	12	3	6	217
	Giardiasis		1			11
	Invasive <i>Haemophilus influenzae</i> disease	1	1	1	3	51
	Invasive meningococcal disease	1			2	9
	Invasive pneumococcal disease	2		3	2	200
	Varicella (limited to hospitalized case)	2			1	49
	Congenital rubella syndrome					
	Syphilis	75	67	95	85	2,803
	Disseminated cryptococcosis			1	1	18
	Tetanus					1
	Vancomycin-resistant <i>S. aureus</i> infection					
	Vancomycin-resistant Enterococcus infection					6
	Pertussis	11	5	12	13	186
	Rubella					1
	Measles			1		9
MDRA infection					1	

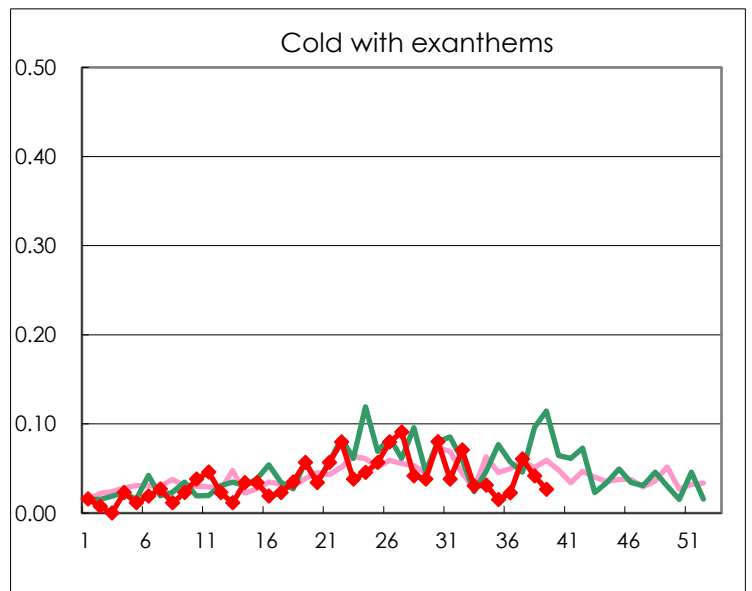
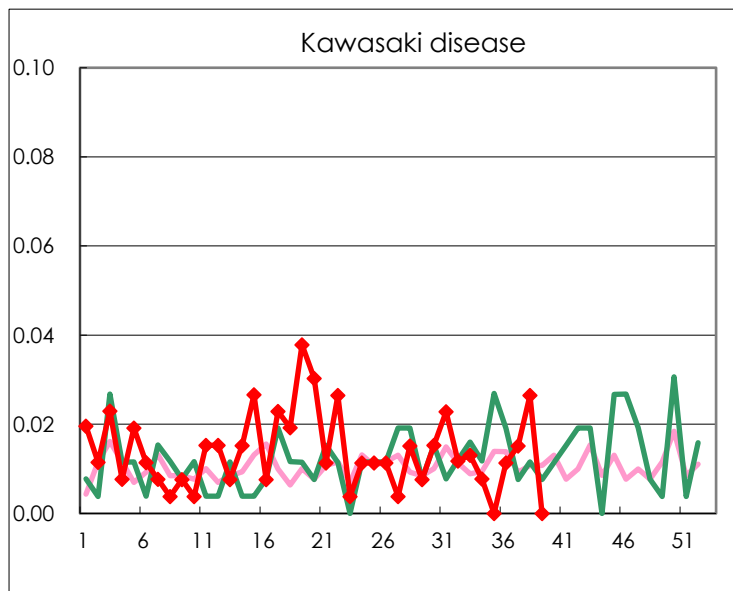
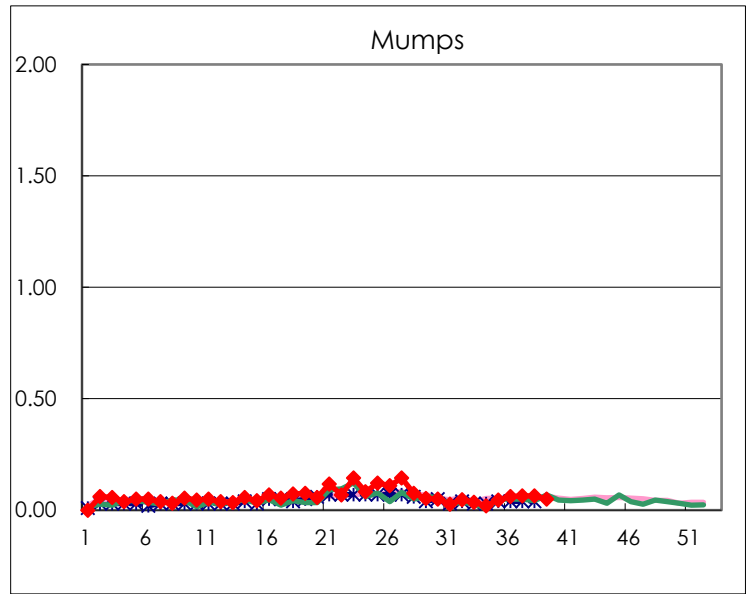
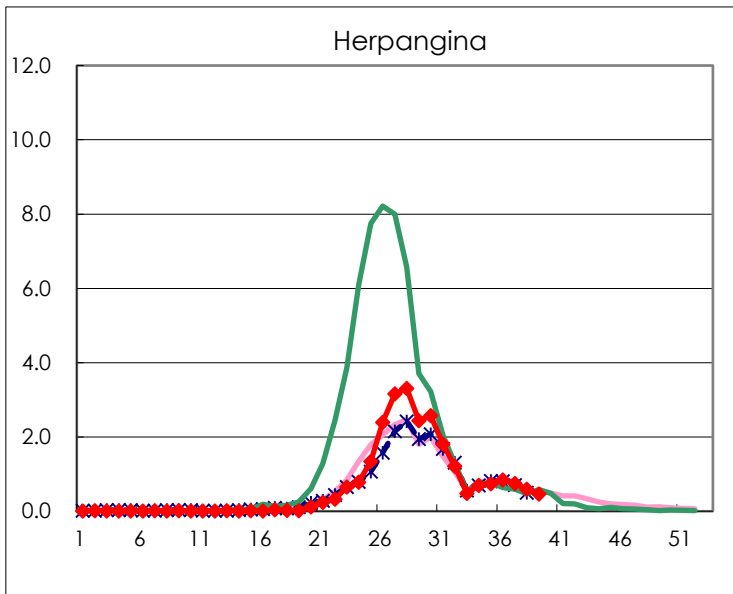
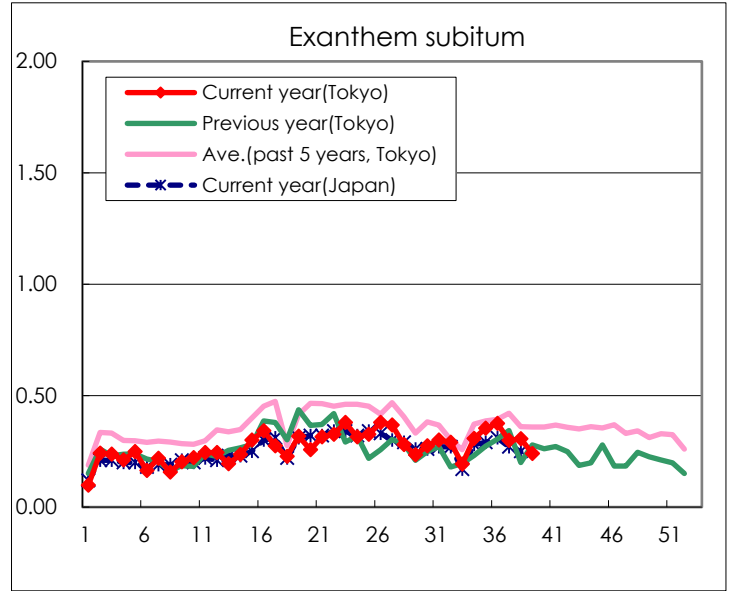
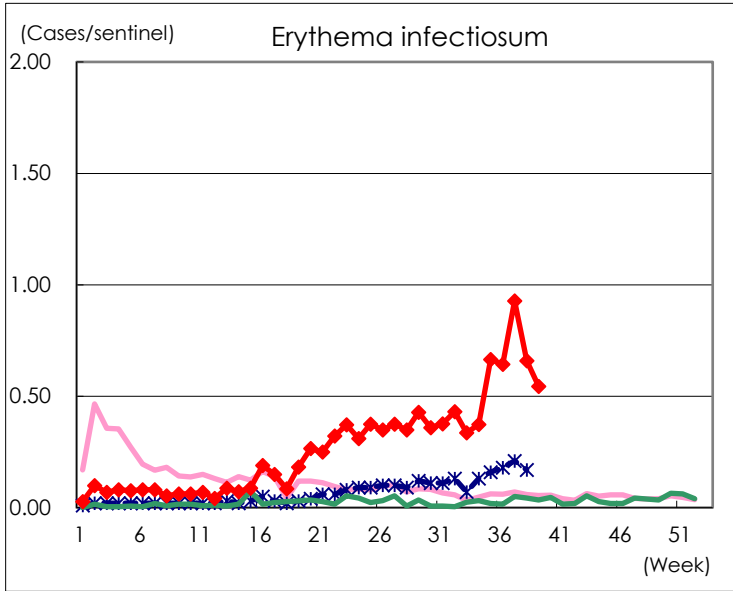
Number of patients with the diseases to be reported
by the designated clinics and hospitals

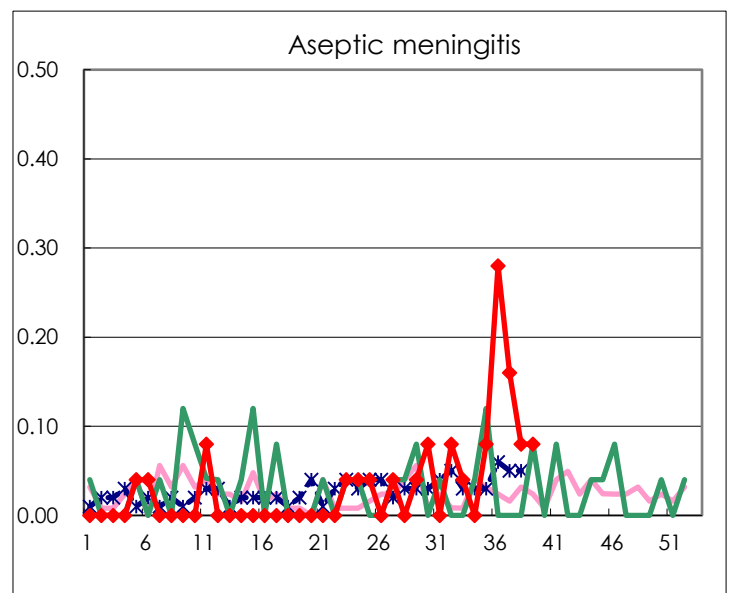
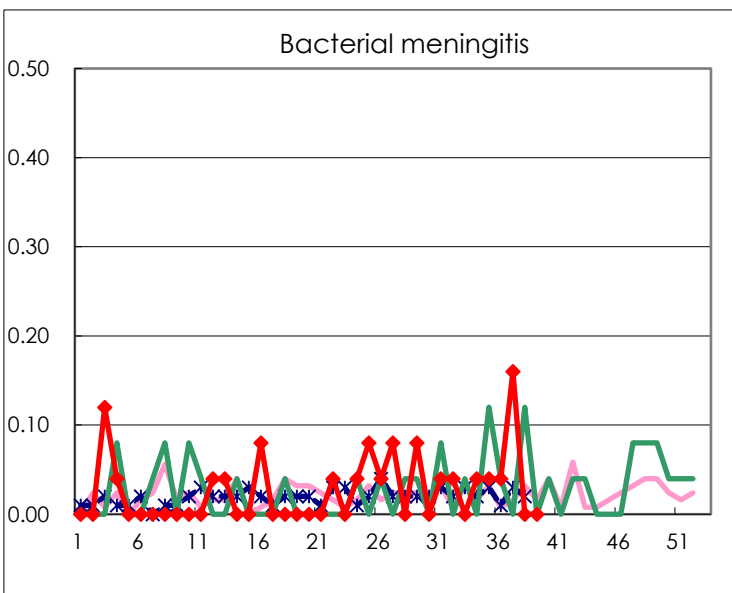
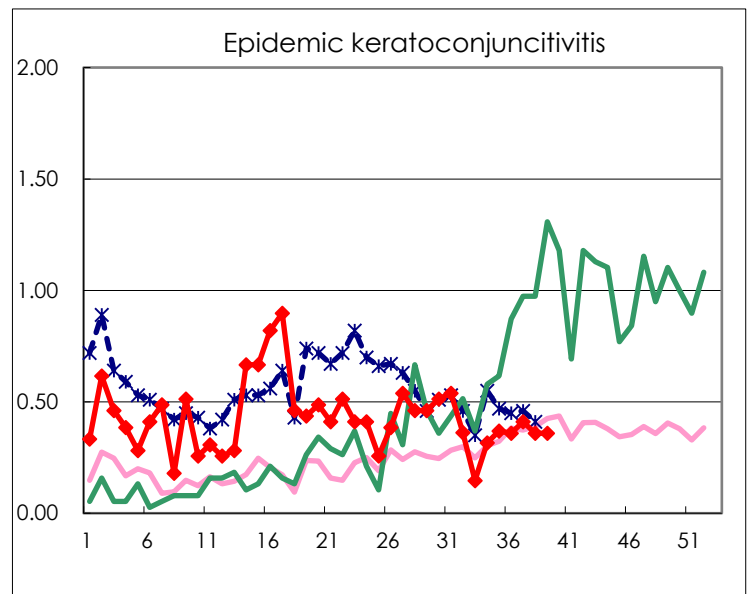
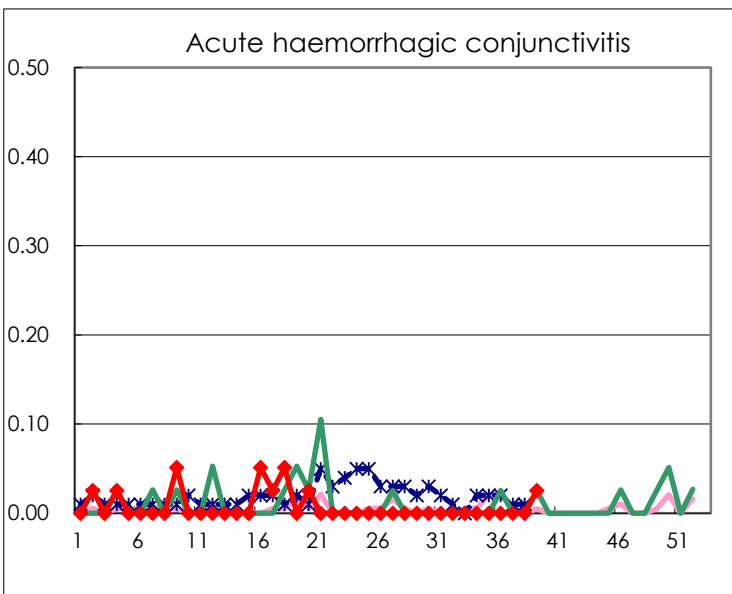
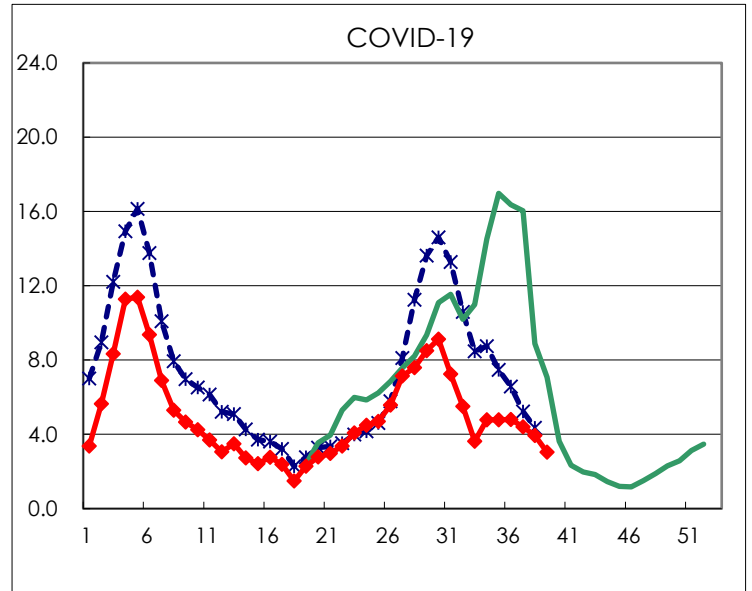
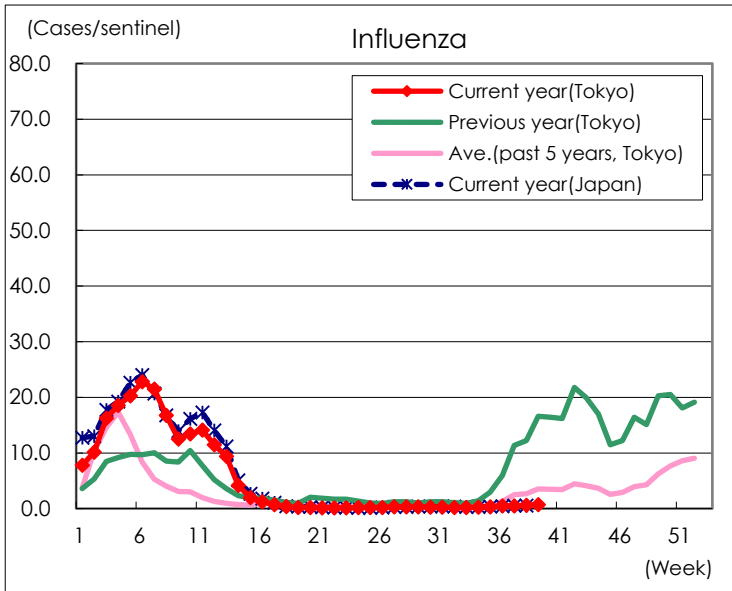
Diseases	Tokyo				
	36th	37th	38th	39th	/sentinel
Respiratory syncytial virus infection	69	63	54	81	0.31
Pharyngoconjunctival fever	53	56	43	50	0.19
Group A streptococcal pharyngitis	451	464	385	351	1.33
Infectious gastroenteritis	839	839	729	678	2.58
Chickenpox	32	41	46	42	0.16
Hand, foot, and mouth disease	2,033	2,411	2,312	2,363	8.98
Erythema infectiosum	170	245	174	143	0.54
Exanthem subitum	99	79	81	63	0.24
Herpangina	222	198	156	122	0.46
Mumps	16	17	17	13	0.05
Kawasaki disease	3	4	7		
Cold with exanthems	6	16	11	7	0.03
Influenza	208	202	246	290	0.69
COVID-19	2,011	1,843	1,649	1,272	3.04
Acute hemorrhagic conjunctivitis				1	0.03
Epidemic keratoconjunctivitis	14	16	14	14	0.36
Bacterial meningitis	1	4			
Aseptic meningitis	7	4	2	2	0.08
Mycoplasma pneumonia	32	41	70	74	2.96
Chlamydial pneumonia (excluding psittacosis)				1	0.04
Infectious gastroenteritis (only by Rotavirus)					
Influenza-Associated Hospitalizations	3	7	3	5	0.20
COVID-19-Associated Hospitalizations	151	133	96	94	3.76

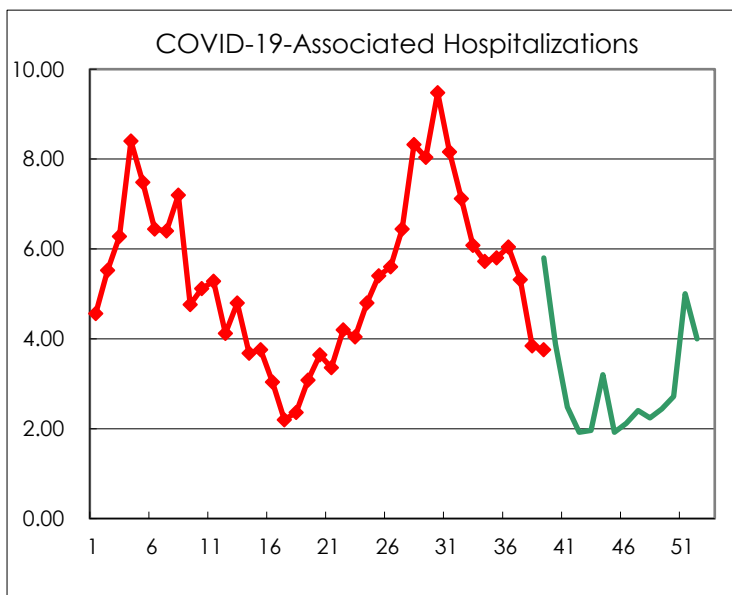
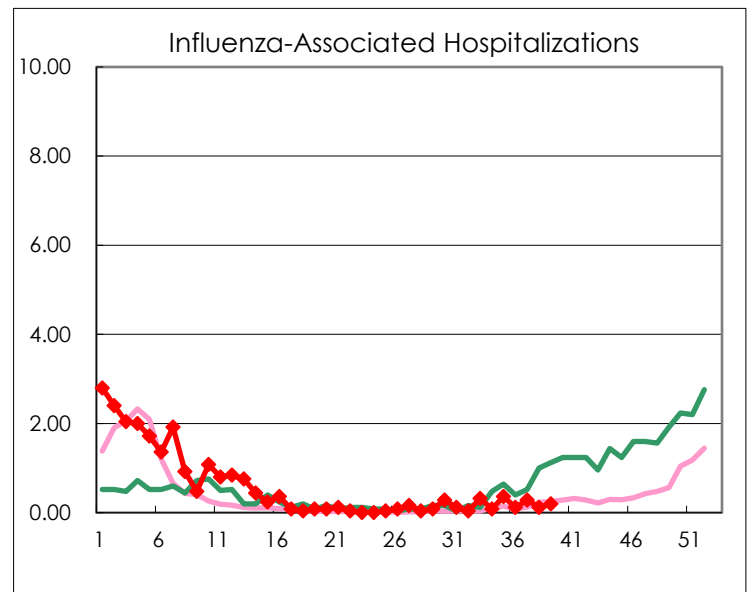
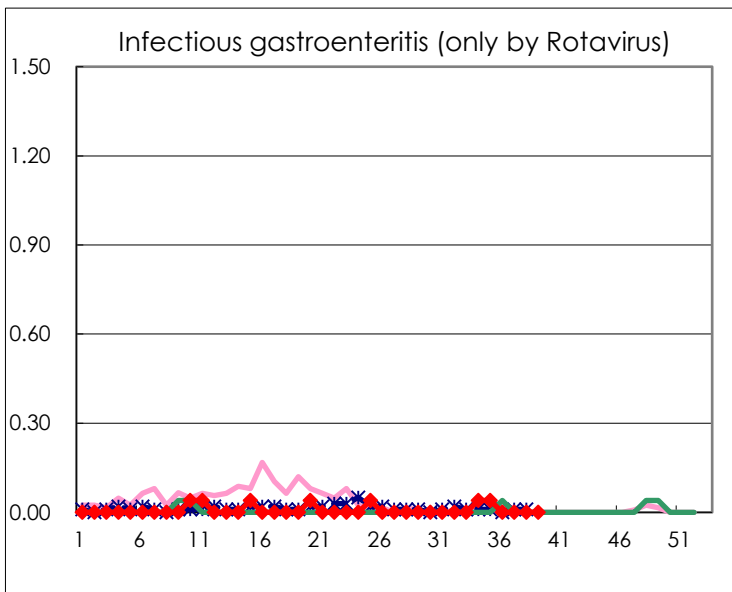
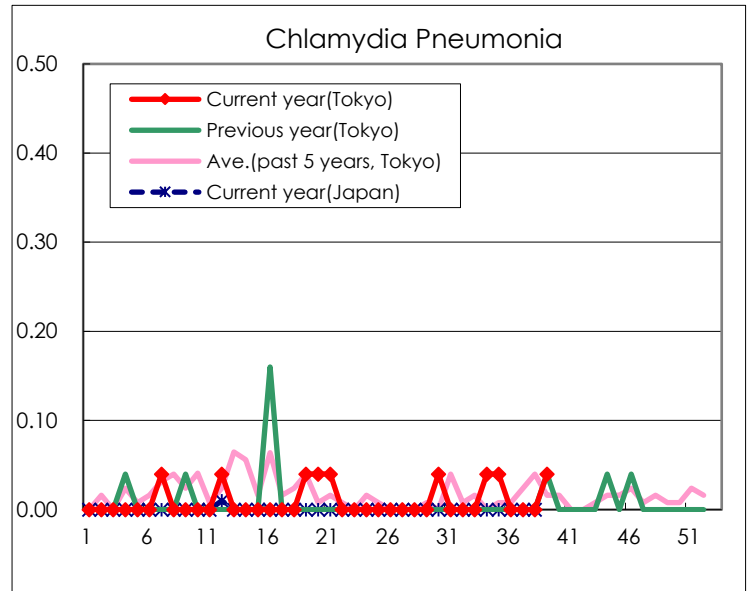
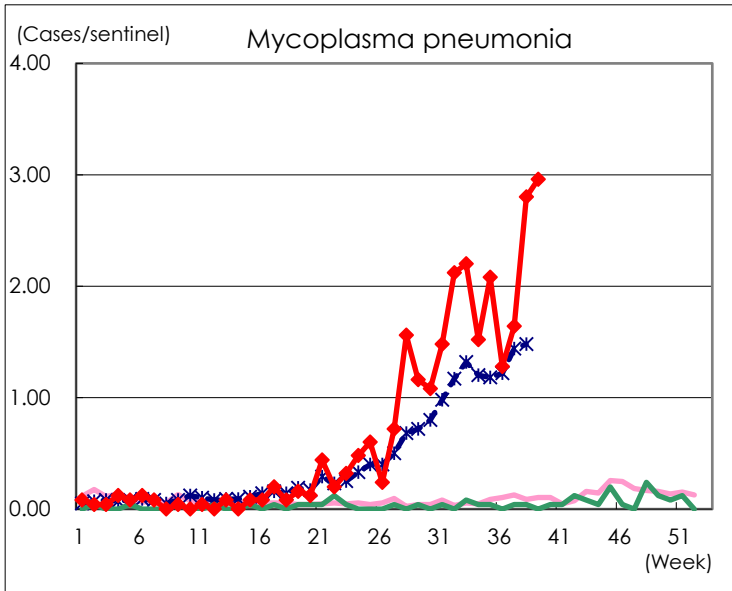
(Blank means 0.)

Disease Trend Graph (weekly reported cases per sentinel in comparison)









Number of sentinel facilities for weekly reporting		
Types of sentinels	Number of sentinels	Sentinels having reported
Pediatric	264	263
Influenza COVID-19	419	418
Ophthalmic	39	39
Specially-designated	25	25