

---

INFECTIOUS DISEASES WEEKLY REPORT

# TOKYO IDWR

Tokyo Metropolitan Infectious Disease Surveillance Center

**10 October 2024 / Number 40**  
**( 9/30 ~ 10/6 )**

## Surveillance System in Tokyo, Japan

The infectious diseases which all physicians must report  
All physicians must report to health centers the incidence of the diseases which are shown at page one. Health centers electronically report the individual cases to Tokyo Metropolitan Infectious Disease Surveillance Center.

The infectious diseases required to be reported by the sentinels  
The numbers of patients who visit the sentinel clinics or hospitals during a week are reported to health centers in Tokyo. And they electronically report the numbers to Tokyo Metropolitan Infectious Disease Surveillance Center. We have about 500 sentinel clinics and hospitals in Tokyo.

Tokyo Metropolitan Institute of Public Health

TEL:81-3-3363-3213 FAX:81-3-5332-7365

e-mail:tmiph@section.metro.tokyo.jp

URL:idsc.tmiph.metro.tokyo.lg.jp/

---

Number of patients with the diseases which all physicians must report

Category	Diseases	Tokyo				
		37th	38th	39th	40th	Cum 2024
I	Ebola hemorrhagic fever					
	Crimean-Congo hemorrhagic fever					
	Smallpox					
	South American hemorrhagic fever					
	Plague					
	Marburg disease					
	Lassa fever					
II	Acute poliomyelitis					
	Tuberculosis	50	45	27	49	1,634
	Diphtheria					
	Severe Acute Respiratory Syndrome(SARS)					
	Middle East Respiratory Syndrome (MERS)					
	Avian influenza H5N1					
III	Avian influenza H7N9					
	Cholera					2
	Shigellosis				2	21
	Enterohemorrhagic Escherichia coli infection	17	20	16	10	348
	Typhoid fever		1			5
IV	Paratyphoid fever					2
	Hepatitis E	2	7	3		112
	West Nile fever					
	Hepatitis A	1	1		1	18
	Echinococcosis					1
	Mpox					12
	Yellow fever					
	Psittacosis					
	Omsk hemorrhagic fever					
	Relapsing fever					
	Kyasanur forest disease					
	Q fever					
	Rabies					
	Coccidioidomycosis					2
	Zika virus infection					
	Severe Fever with Thrombocytopenia Syndrome					
	Hemorrhagic fever with renal syndrome					
	Western equine encephalitis					
	Tick-borne encephalitis					
	Anthrax					
	Chikungunya fever					
	Scrub typhus(Tsutsugamushi disease)					
	Dengue fever	1	1	4	2	57
	Eastern equine encephalitis					
	Avian influenza (excluding H5N1 and H7N9)					
	Nipah virus infection					
	Japanese spotted fever					
	Japanese encephalitis					
	Hantavirus pulmonary syndrome					
	Herpes B virus infection					
	Glanders					
	Brucellosis					
	Venezuelan equine encephalitis					
Hendra virus infection						
Epidemic typhus						
Botulism						
Malaria		1			9	
Tularemia						
Lyme disease		1			1	
Lyssavirus infection(excluding rabies)						
Rift valley fever						
Melioidosis						
Legionellosis	11	5	3	3	165	
Leptospirosis			1	1	5	
Rocky mountain spotted fever						

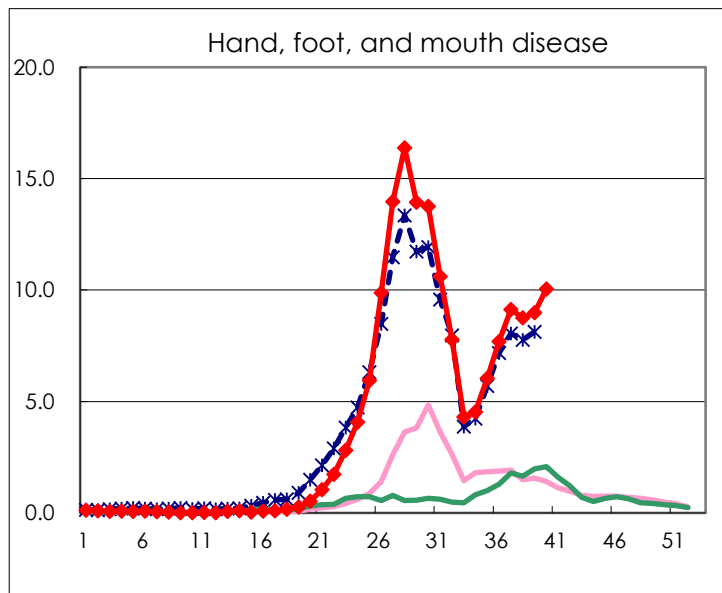
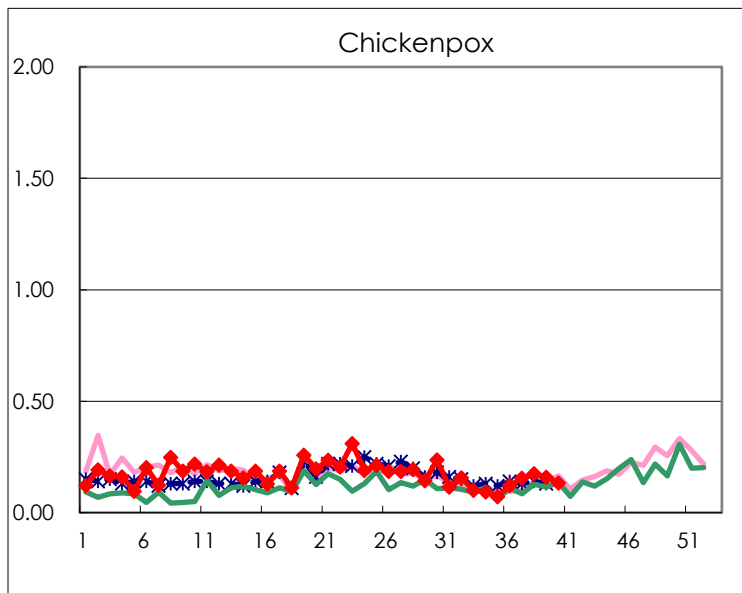
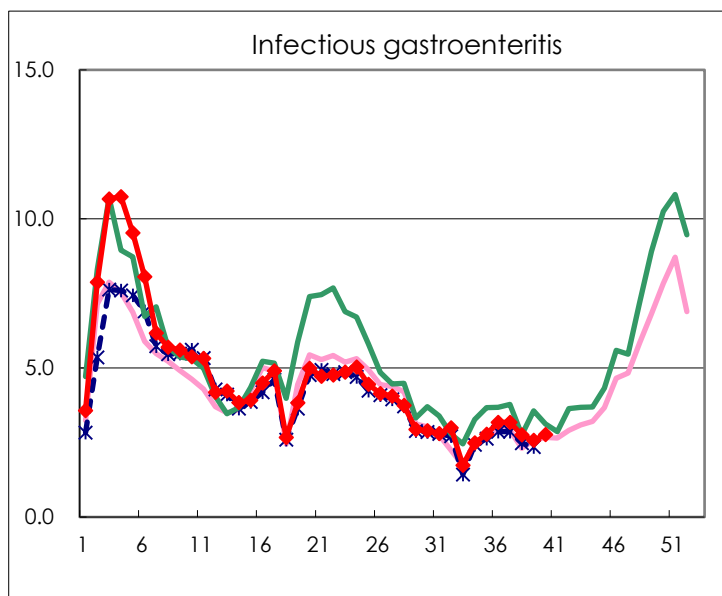
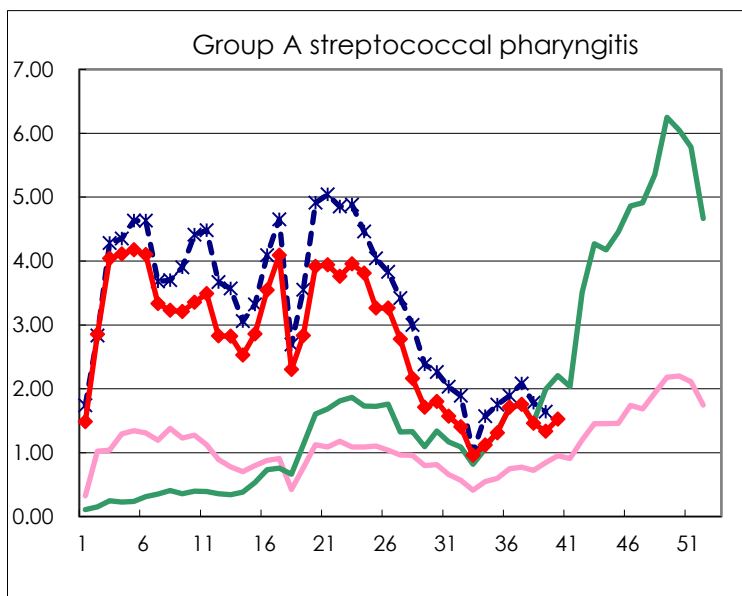
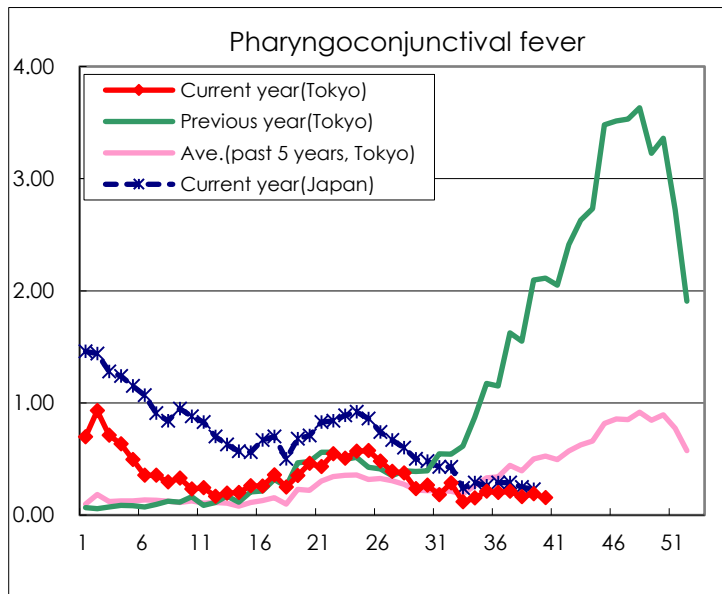
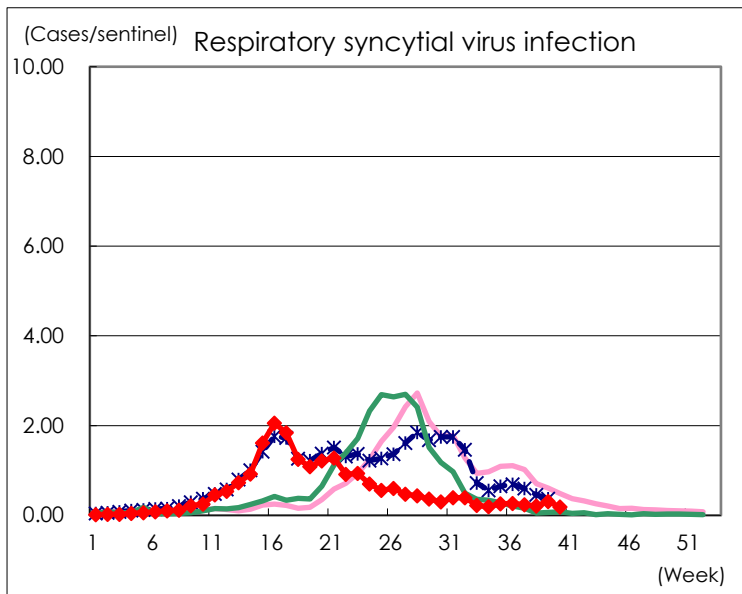
Category	Diseases	Tokyo				
		37th	38th	39th	40th	Cum 2024
V	Amebiasis	1	2	2	2	84
	Viral hepatitis(excluding hepatitis A and E)	2	2		1	32
	CRE infection	5	9	2	6	151
	Acute Flaccid Paralysis (excluding Acute poliomyelitis)					4
	Acute encephalitis(excluding JE and WNE)					32
	Cryptosporidiosis				1	11
	Creutzfeldt-Jakob disease					9
	Severe invasive streptococcal infections(TSLS)	1	2	2	2	208
	Acquired immunodeficiency syndrome (AIDS)	12	3	6	5	222
	Giardiasis	1				11
	Invasive <i>Haemophilus influenzae</i> disease	1	1	3		51
	Invasive meningococcal disease			2		9
	Invasive pneumococcal disease		3	2	3	203
	Varicella (limited to hospitalized case)			1	2	51
	Congenital rubella syndrome					
	Syphilis	67	98	90	75	2,886
	Disseminated cryptococcosis		1	1		18
	Tetanus					1
	Vancomycin-resistant <i>S. aureus</i> infection					
	Vancomycin-resistant <i>Enterococcus</i> infection					6
	Pertussis	5	12	13	11	197
	Rubella					1
Measles		1			9	
MDRA infection					1	

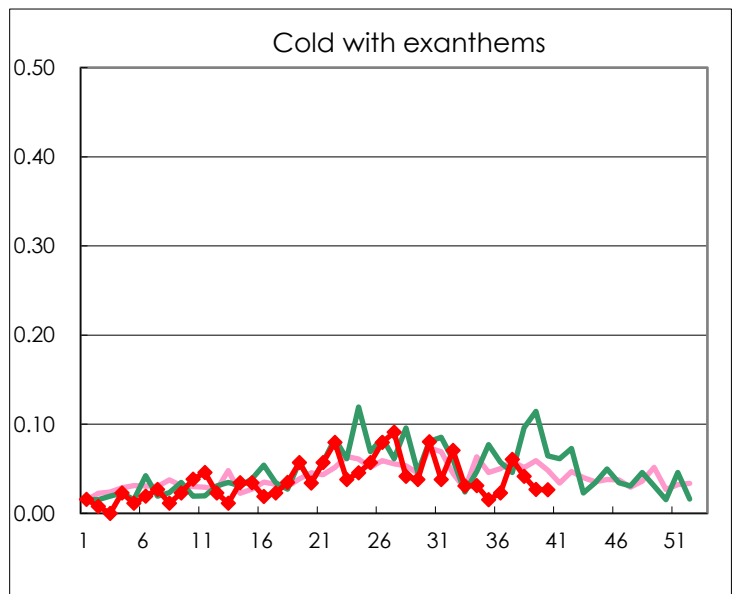
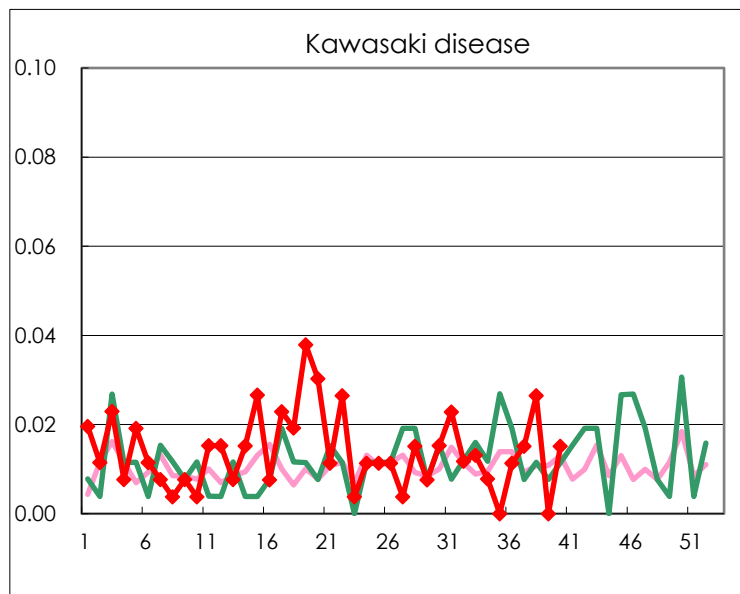
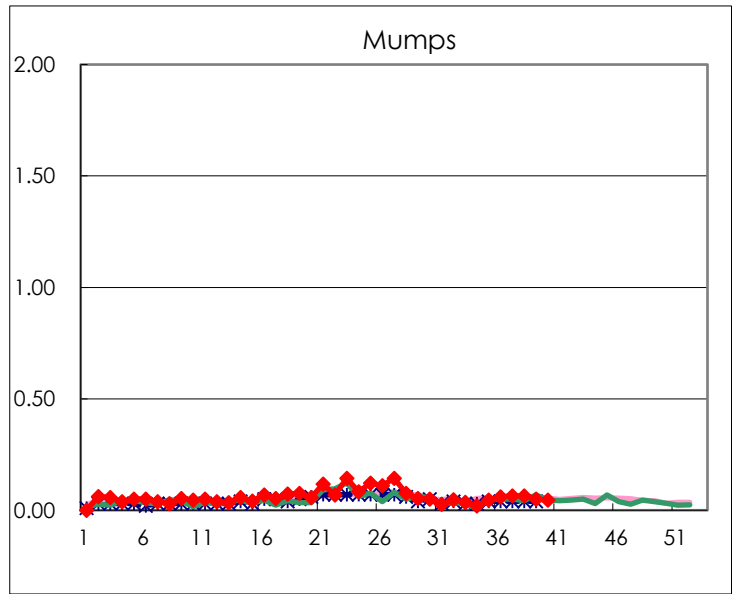
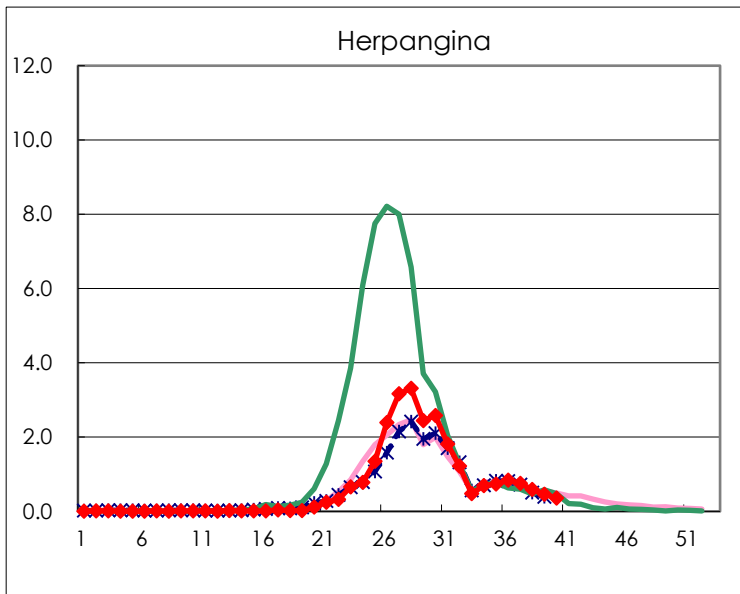
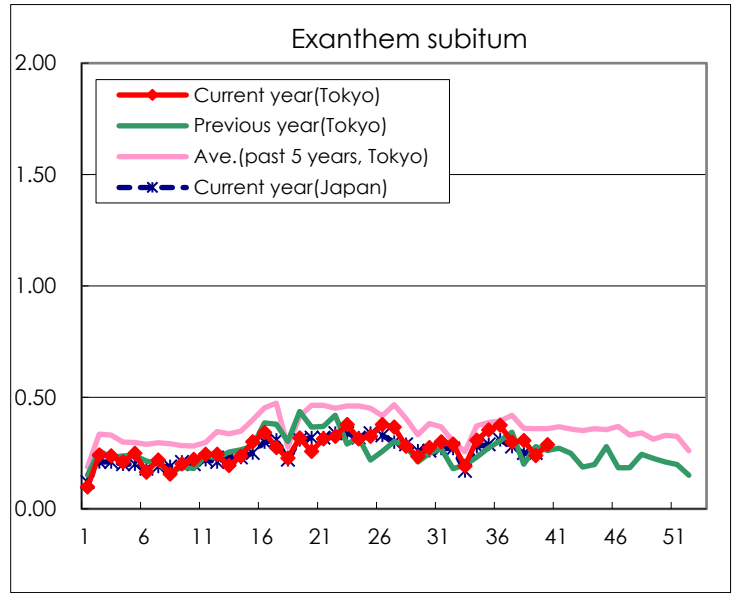
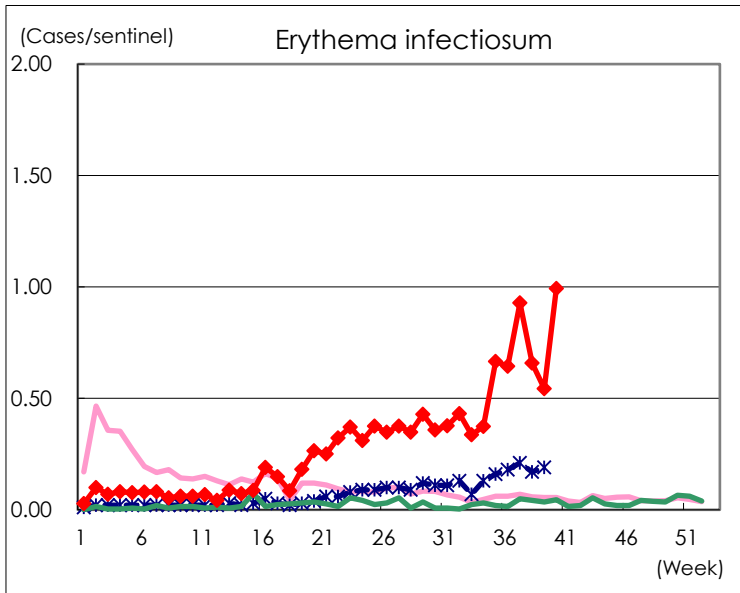
Number of patients with the diseases to be reported  
by the designated clinics and hospitals

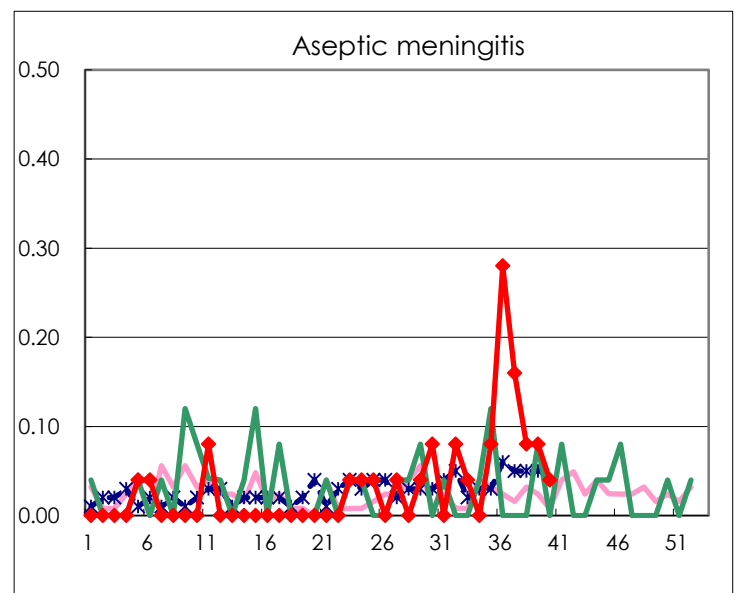
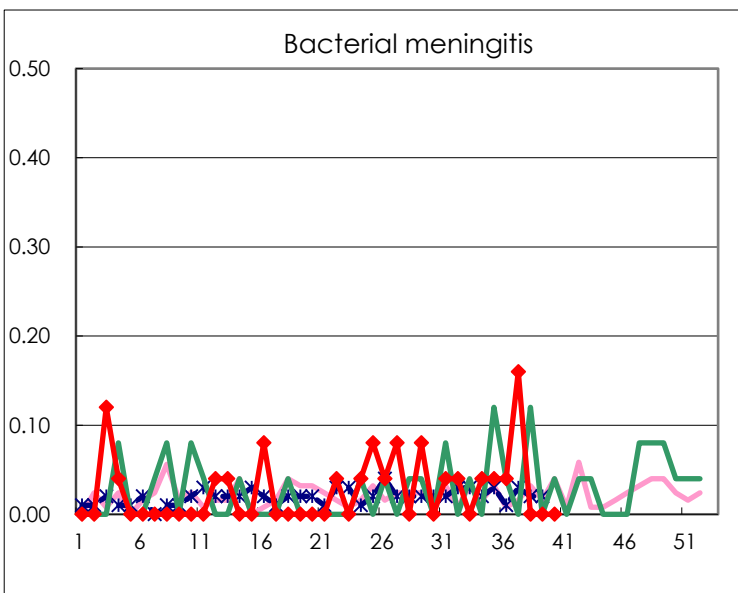
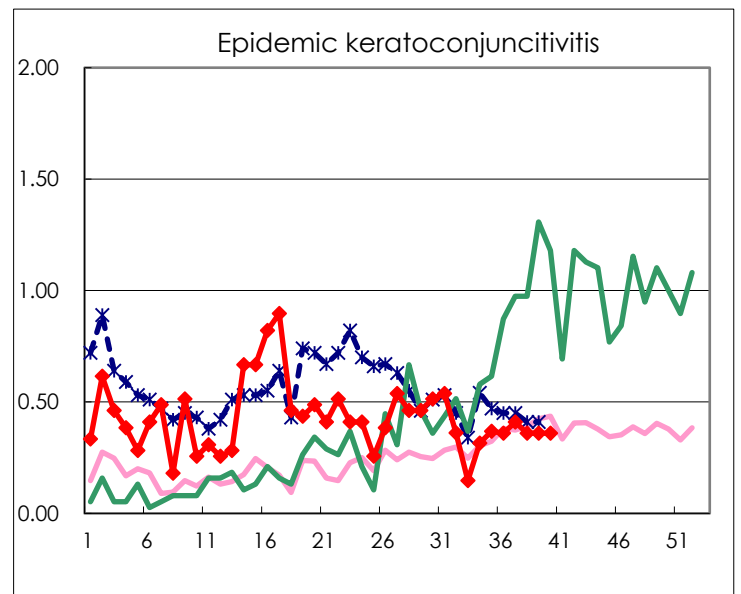
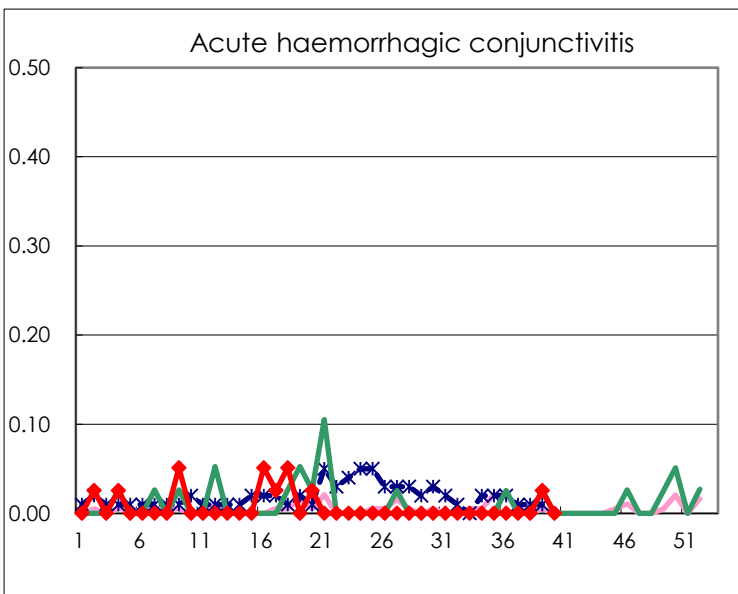
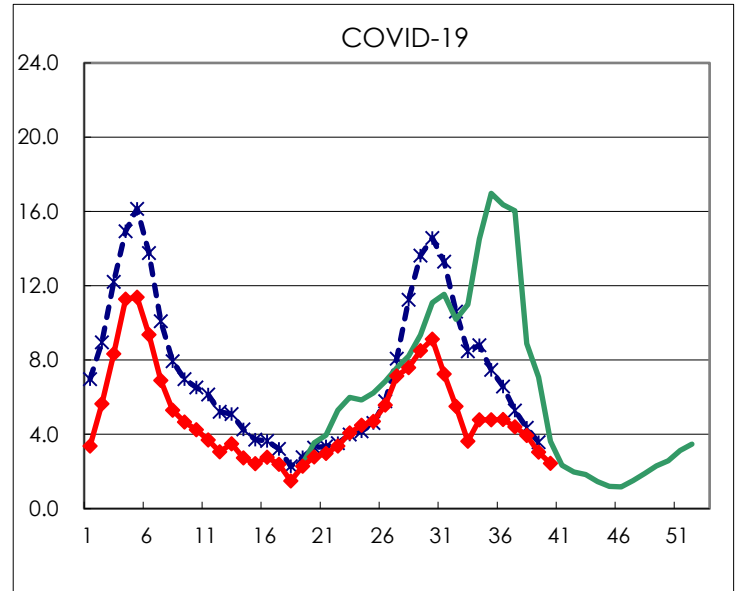
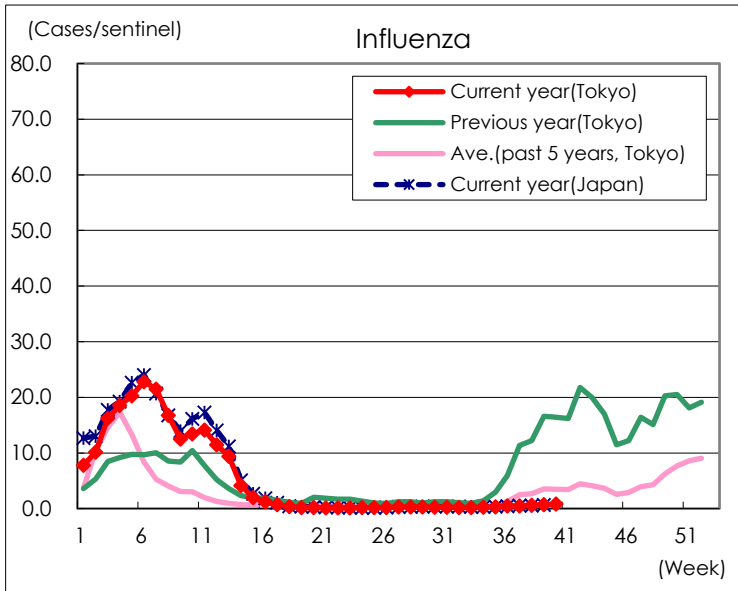
Diseases	Tokyo				
	37th	38th	39th	40th	/sentinel
Respiratory syncytial virus infection	63	54	81	50	0.19
Pharyngoconjunctival fever	56	43	50	41	0.16
Group A streptococcal pharyngitis	464	385	351	402	1.52
Infectious gastroenteritis	839	729	678	730	2.77
Chickenpox	41	46	42	35	0.13
Hand, foot, and mouth disease	2,411	2,312	2,363	2,655	10.06
Erythema infectiosum	245	174	143	262	0.99
Exanthem subitum	79	81	63	76	0.29
Herpangina	198	156	122	94	0.36
Mumps	17	17	13	12	0.05
Kawasaki disease	4	7		4	0.02
Cold with exanthems	16	11	7	7	0.03
Influenza	202	246	290	335	0.80
COVID-19	1,843	1,649	1,272	1,025	2.45
Acute hemorrhagic conjunctivitis			1		
Epidemic keratoconjunctivitis	16	14	14	14	0.36
Bacterial meningitis	4				
Aseptic meningitis	4	2	2	1	0.04
<i>Mycoplasma pneumoniae</i>	41	70	74	72	2.88
Chlamydial pneumonia (excluding <i>psittacosis</i> )			1	1	0.04
Infectious gastroenteritis (only by Rotavirus)					
Influenza-Associated Hospitalizations	7	3	5	6	0.24
COVID-19-Associated Hospitalizations	133	96	94	78	3.12

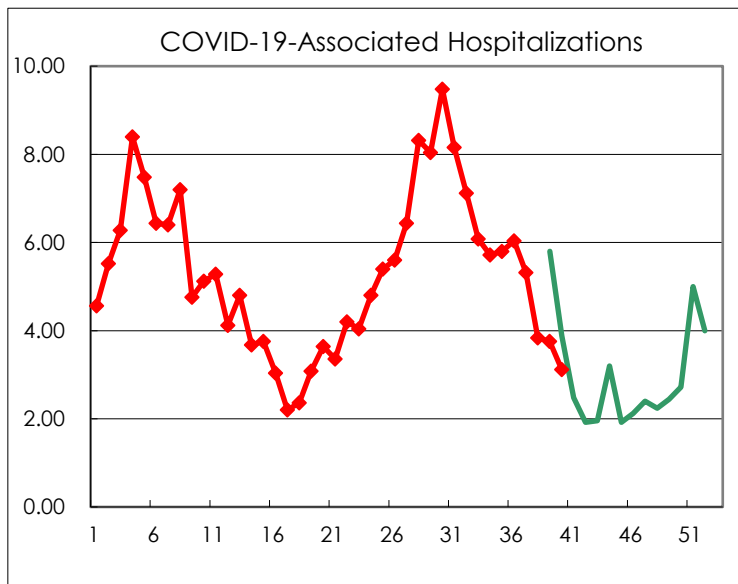
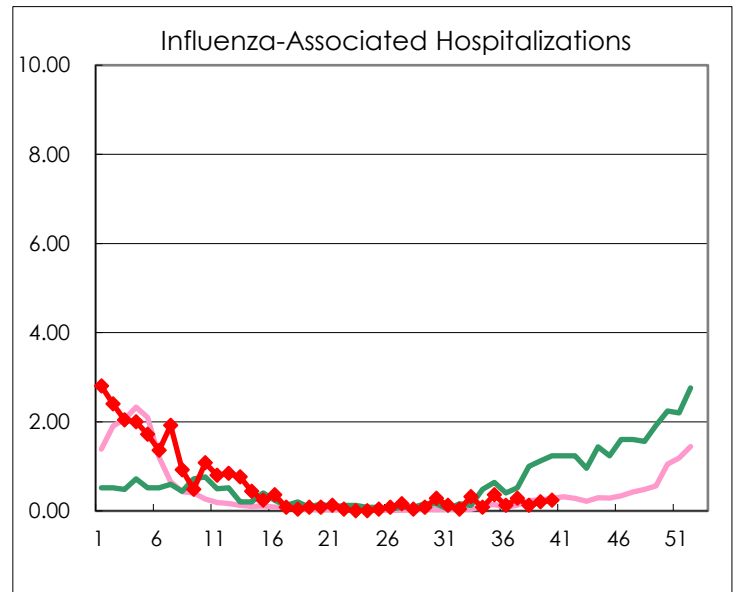
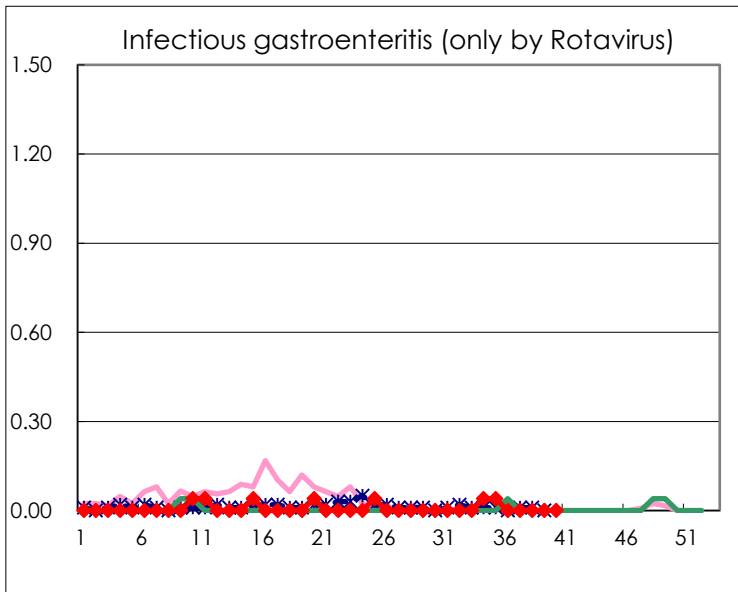
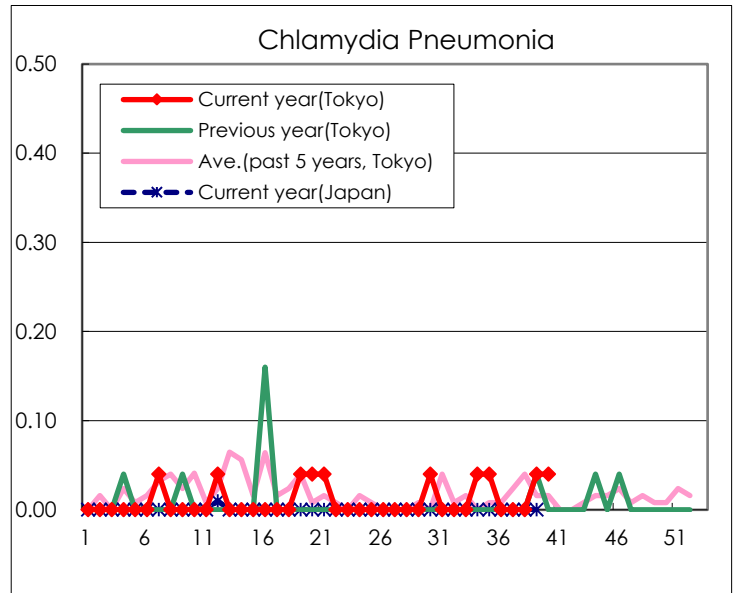
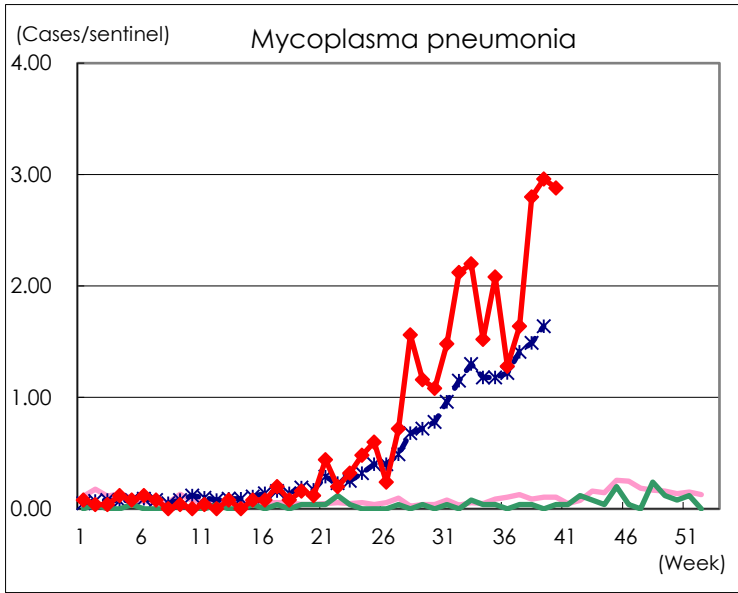
(Blank means 0.)

# Disease Trend Graph (weekly reported cases per sentinel in comparison)









Number of sentinel facilities for weekly reporting		
Types of sentinels	Number of sentinels	Sentinels having reported
Pediatric	264	264
Influenza COVID-19	419	419
Ophthalmic	39	39
Specially-designated	25	25