

---

INFECTIOUS DISEASES WEEKLY REPORT

# TOKYO IDWR

Tokyo Metropolitan Infectious Disease Surveillance Center

**17 October 2024 / Number 41**  
**( 10/7 ~ 10/13 )**

## Surveillance System in Tokyo, Japan

The infectious diseases which all physicians must report  
All physicians must report to health centers the incidence of the diseases which are shown at page one. Health centers electronically report the individual cases to Tokyo Metropolitan Infectious Disease Surveillance Center.

The infectious diseases required to be reported by the sentinels  
The numbers of patients who visit the sentinel clinics or hospitals during a week are reported to health centers in Tokyo. And they electronically report the numbers to Tokyo Metropolitan Infectious Disease Surveillance Center. We have about 500 sentinel clinics and hospitals in Tokyo.

Tokyo Metropolitan Institute of Public Health

TEL:81-3-3363-3213 FAX:81-3-5332-7365

e-mail:tmiph@section.metro.tokyo.jp

URL:idsc.tmiph.metro.tokyo.lg.jp/

---

Number of patients with the diseases which all physicians must report

Category	Diseases	Tokyo				
		38th	39th	40th	41st	Cum 2024
I	Ebola hemorrhagic fever					
	Crimean-Congo hemorrhagic fever					
	Smallpox					
	South American hemorrhagic fever					
	Plague					
	Marburg disease					
	Lassa fever					
II	Acute poliomyelitis					
	Tuberculosis	46	25	49	35	1,669
	Diphtheria					
	Severe Acute Respiratory Syndrome(SARS)					
	Middle East Respiratory Syndrome (MERS)					
	Avian influenza H5N1					
	Avian influenza H7N9					
III	Cholera					2
	Shigellosis			2	1	22
	Enterohemorrhagic Escherichia coli infection	20	16	10	20	368
	Typhoid fever	1				5
	Paratyphoid fever				1	3
IV	Hepatitis E	7	3		2	114
	West Nile fever					
	Hepatitis A	1		1		18
	Echinococcosis					1
	Mpox				2	14
	Yellow fever					
	Psittacosis					
	Omsk hemorrhagic fever					
	Relapsing fever					
	Kyasanur forest disease					
	Q fever					
	Rabies					
	Coccidioidomycosis					2
	Zika virus infection					
	Severe Fever with Thrombocytopenia Syndrome					
	Hemorrhagic fever with renal syndrome					
	Western equine encephalitis					
	Tick-borne encephalitis					
	Anthrax					
	Chikungunya fever				1	1
	Scrub typhus(Tsutsugamushi disease)					
	Dengue fever	1	4	2		57
	Eastern equine encephalitis					
	Avian influenza (excluding H5N1 and H7N9)					
	Nipah virus infection					
	Japanese spotted fever					
	Japanese encephalitis					
	Hantavirus pulmonary syndrome					
	Herpes B virus infection					
	Glanders					
	Brucellosis					
	Venezuelan equine encephalitis					
	Hendra virus infection					
Epidemic typhus						
Botulism						
Malaria	1				9	
Tularemia						
Lyme disease	1				1	
Lyssavirus infection(excluding rabies)						
Rift valley fever						
Melioidosis						
Legionellosis	5	3	3	14	179	
Leptospirosis		1	1		5	
Rocky mountain spotted fever						

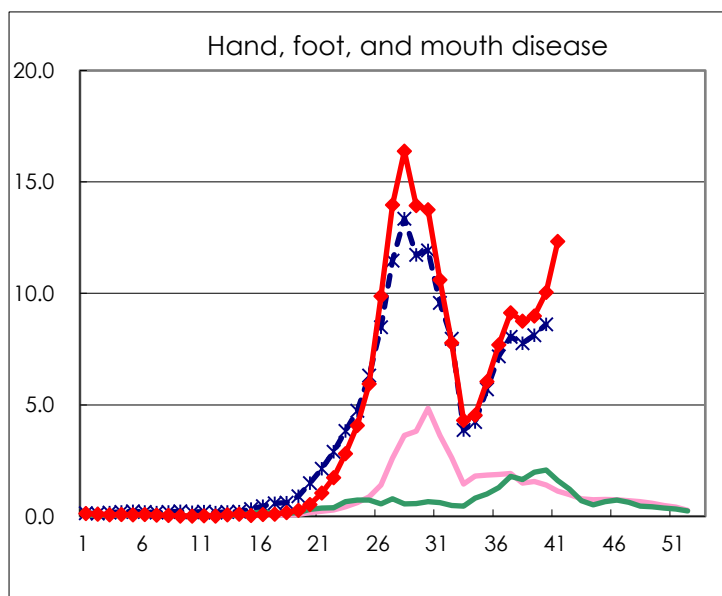
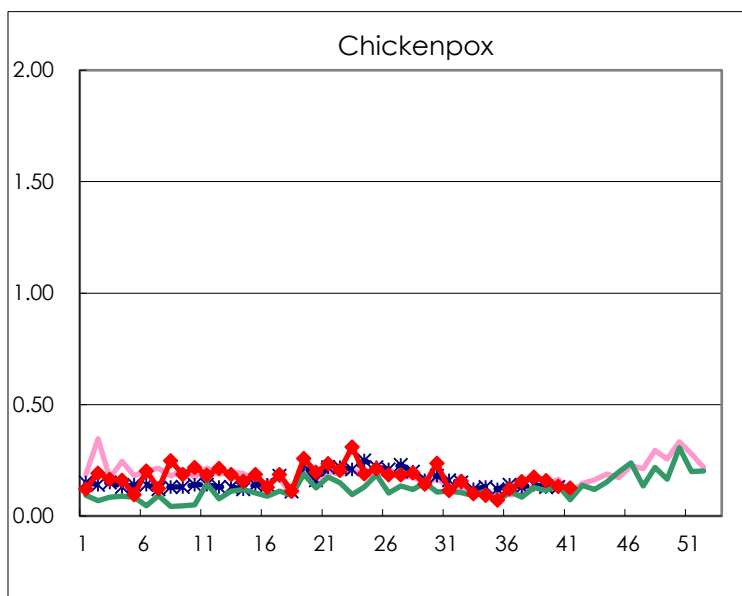
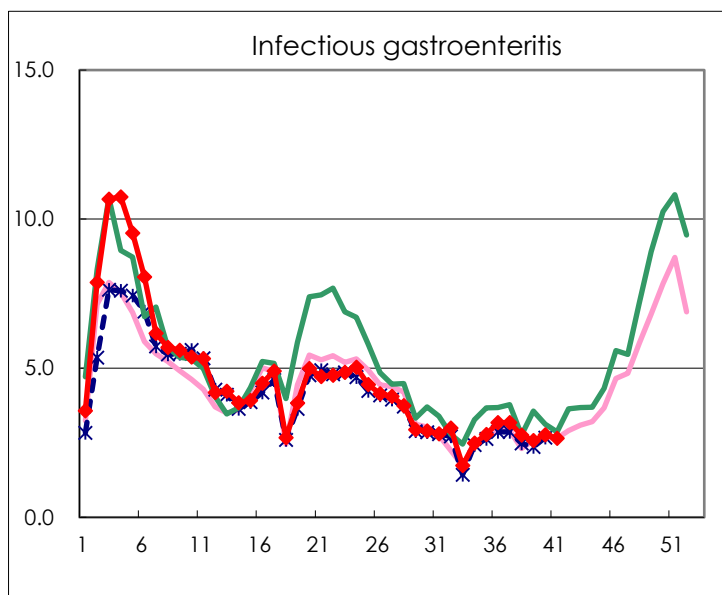
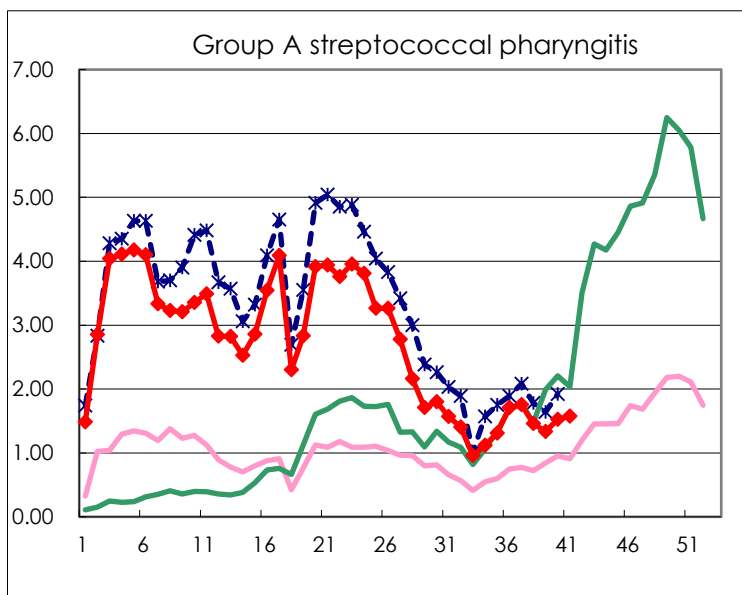
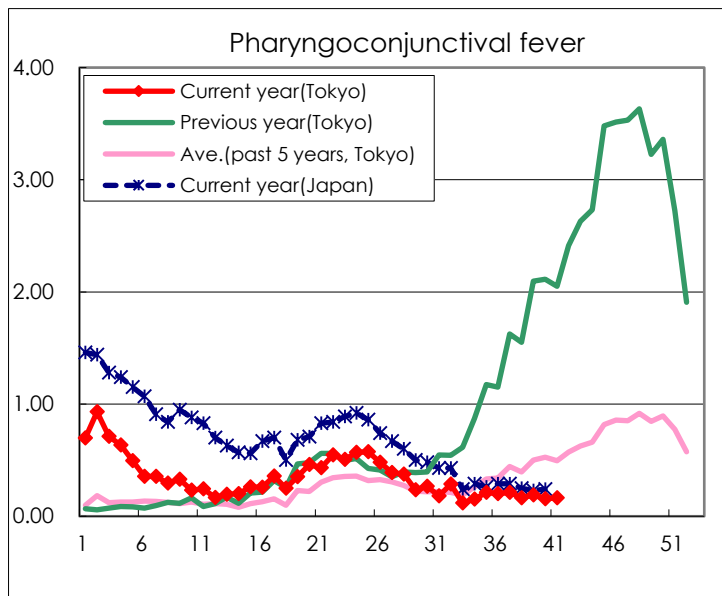
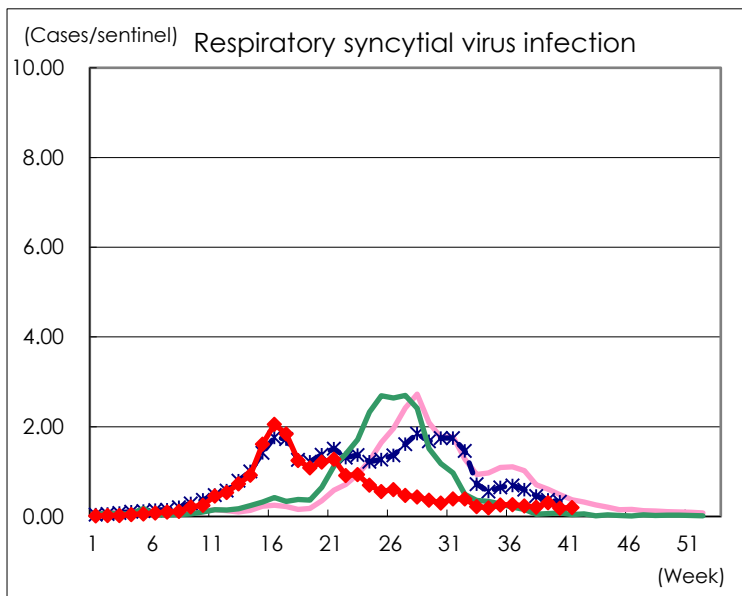
Category	Diseases	Tokyo				
		38th	39th	40th	41st	Cum 2024
V	Amebiasis	2	2	2		84
	Viral hepatitis(excluding hepatitis A and E)	2		1	1	33
	CRE infection	9	2	6	6	157
	Acute Flaccid Paralysis (excluding Acute poliomyelitis)					4
	Acute encephalitis(excluding JE and WNE)				1	33
	Cryptosporidiosis			1	1	12
	Creutzfeldt-Jakob disease					9
	Severe invasive streptococcal infections(TSLS)	2	2	2	1	210
	Acquired immunodeficiency syndrome (AIDS)	3	6	5	6	228
	Giardiasis				1	12
	Invasive <i>Haemophilus influenzae</i> disease	1	3		2	53
	Invasive meningococcal disease		2			9
	Invasive pneumococcal disease	3	2	3	2	205
	Varicella (limited to hospitalized case)		1	2	1	52
	Congenital rubella syndrome					
	Syphilis	98	90	77	68	2,956
	Disseminated cryptococcosis	1	1			18
	Tetanus					1
	Vancomycin-resistant <i>S. aureus</i> infection					
	Vancomycin-resistant <i>Enterococcus</i> infection				1	7
	Pertussis	12	13	11	22	219
Rubella					1	
Measles	1				9	
MDRA infection					1	

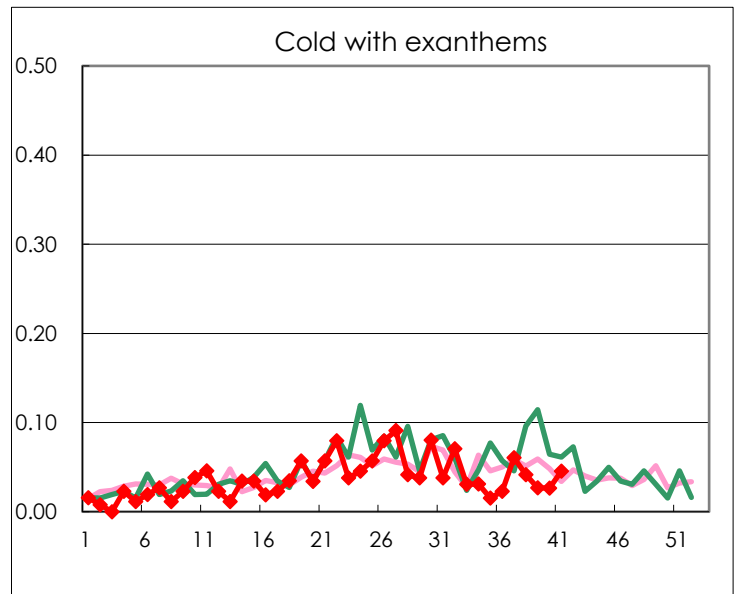
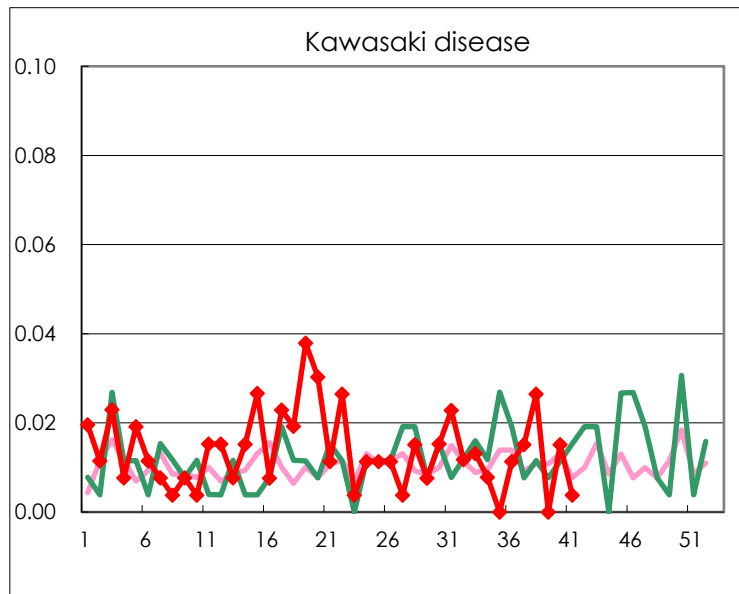
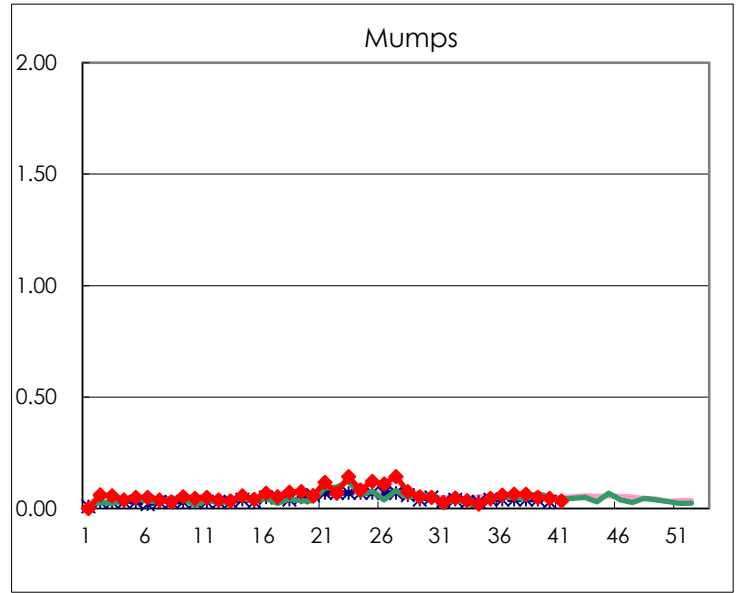
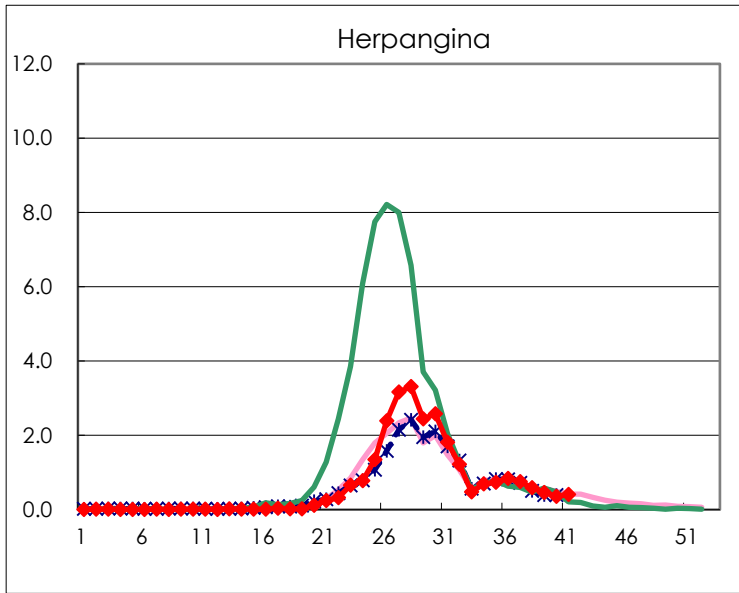
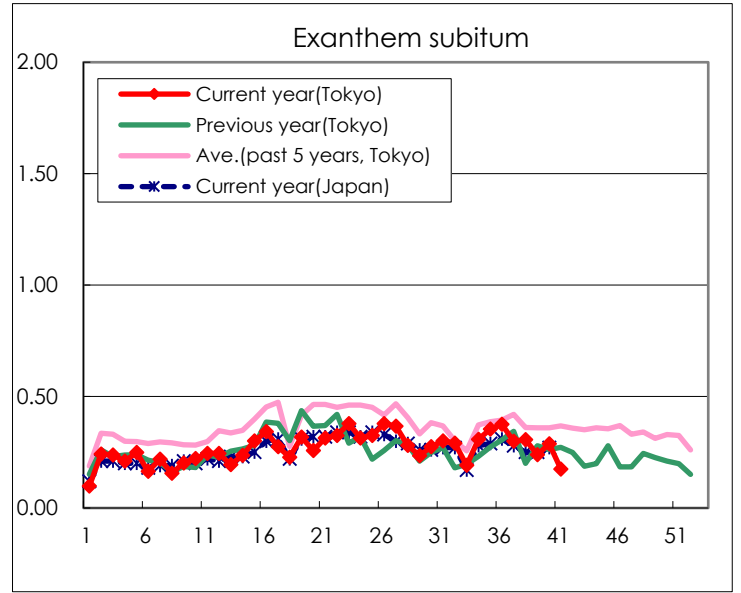
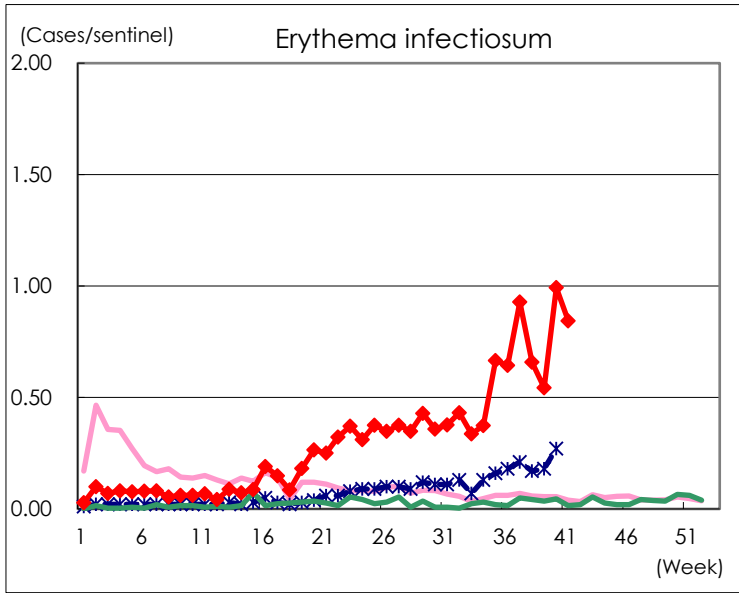
Number of patients with the diseases to be reported  
by the designated clinics and hospitals

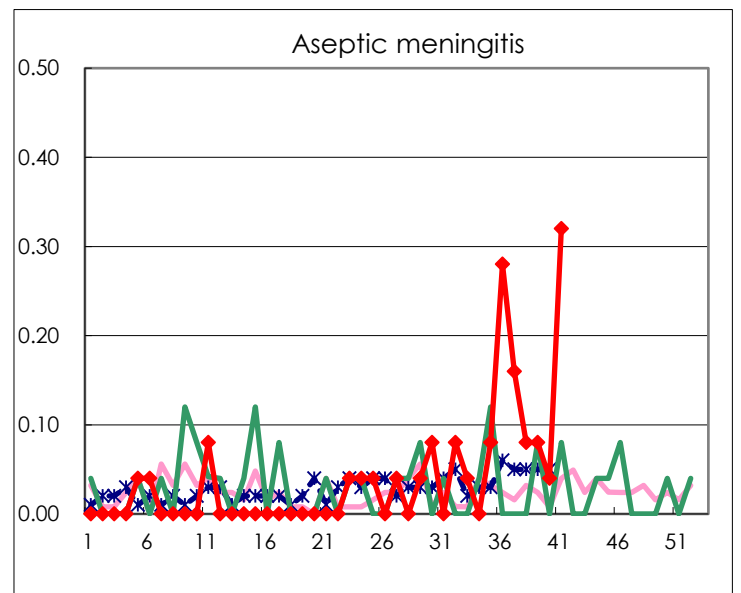
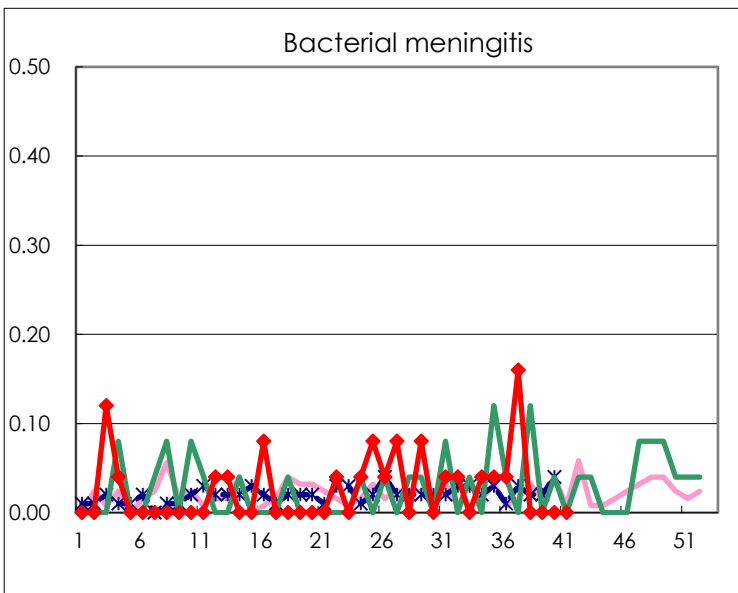
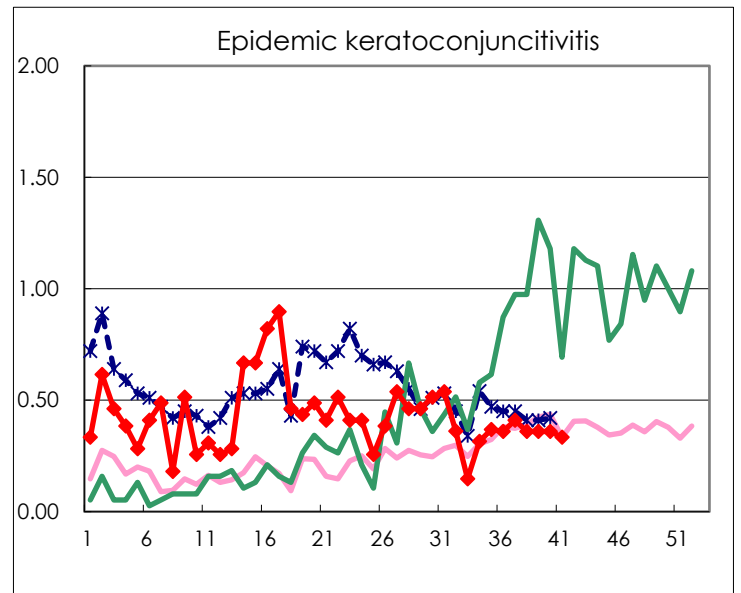
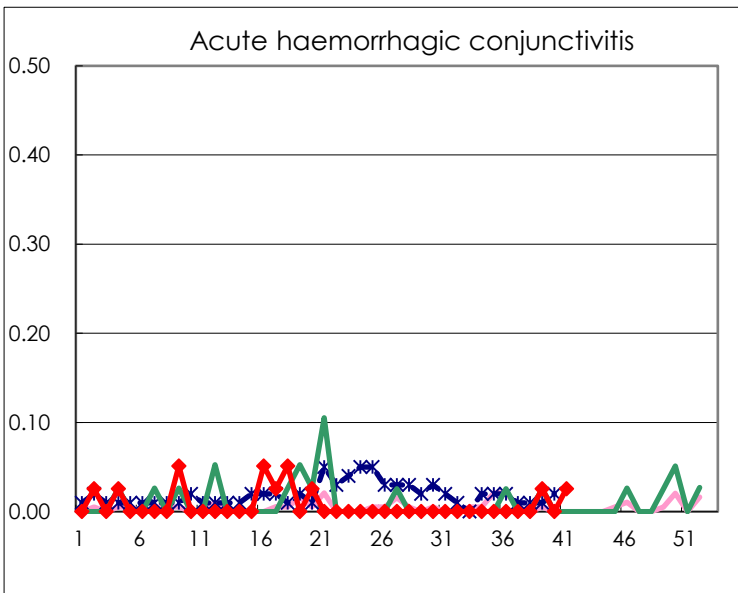
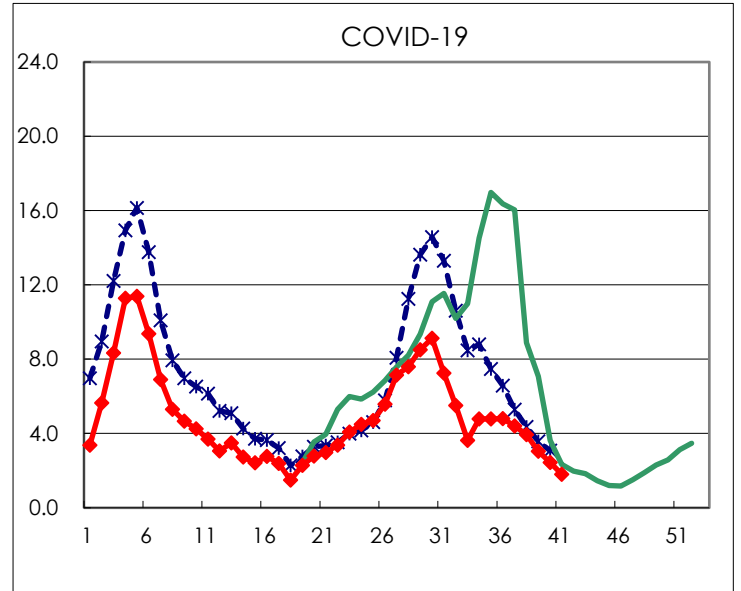
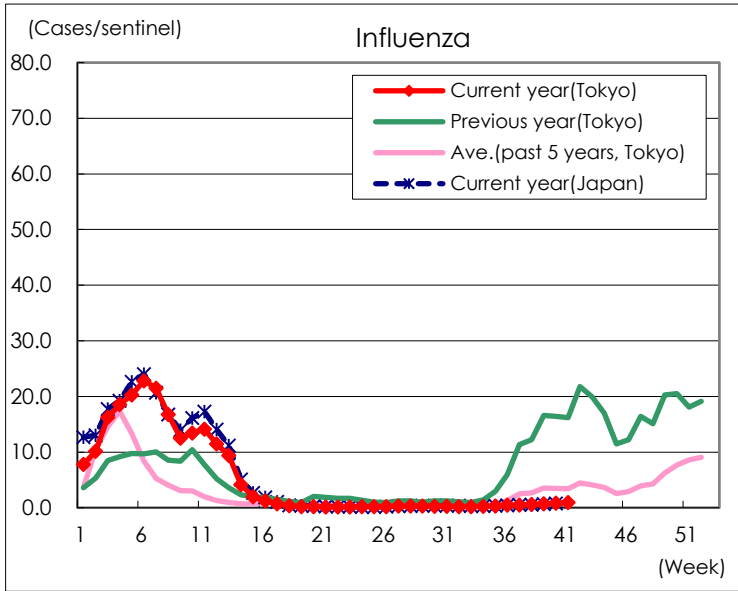
Diseases	Tokyo					
	38th	39th	40th	41st	/sentinel	
Respiratory syncytial virus infection	54	81	50	53	0.20	
Pharyngoconjunctival fever	43	50	41	43	0.16	
Group A streptococcal pharyngitis	385	351	402	414	1.57	
Infectious gastroenteritis	729	678	730	698	2.65	
Chickenpox	46	42	35	33	0.13	
Hand, foot, and mouth disease	2,312	2,363	2,655	3,243	12.33	
Erythema infectiosum	174	143	262	222	0.84	
Exanthem subitum	81	63	76	46	0.17	
Herpangina	156	122	94	108	0.41	
Mumps	17	13	12	9	0.03	
Kawasaki disease	7		4	1	0.00	
Cold with exanthems	11	7	7	12	0.05	
Influenza	246	290	335	393	0.94	
COVID-19	1,649	1,272	1,025	749	1.80	
Acute hemorrhagic conjunctivitis		1		1	0.03	
Epidemic keratoconjunctivitis	14	14	14	13	0.33	
Bacterial meningitis						
Aseptic meningitis	2	2	1	8	0.32	
<i>Mycoplasma pneumoniae</i>	70	74	72	70	2.80	
<i>Chlamydia pneumoniae</i> (excluding <i>psittacosis</i> )		1	1	1	0.04	
Infectious gastroenteritis (only by Rotavirus)						
Influenza-Associated Hospitalizations	3	5	6	9	0.36	
COVID-19-Associated Hospitalizations	96	94	78	91	3.64	

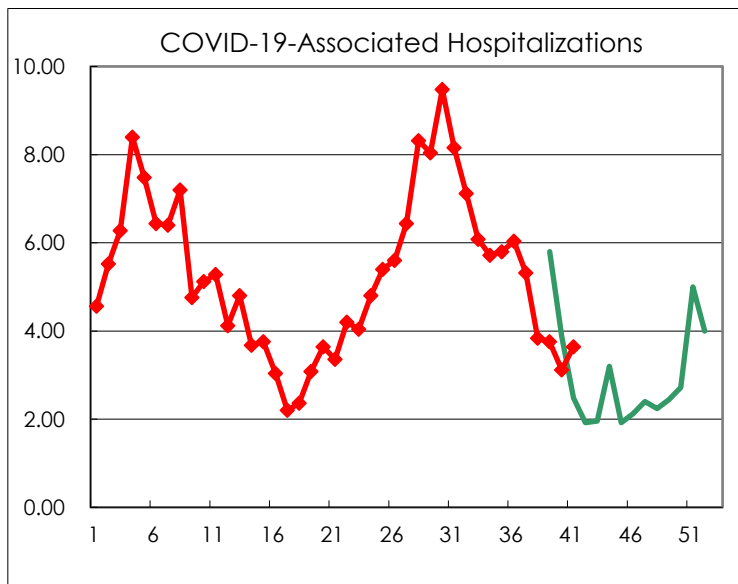
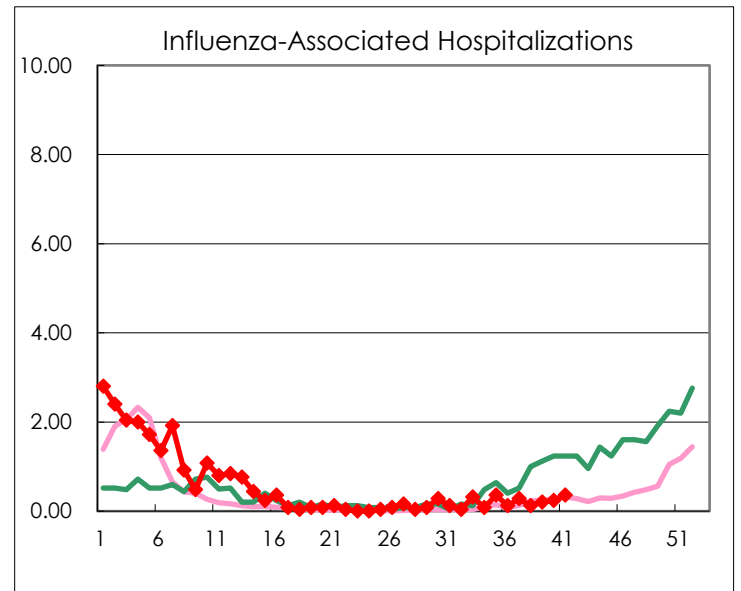
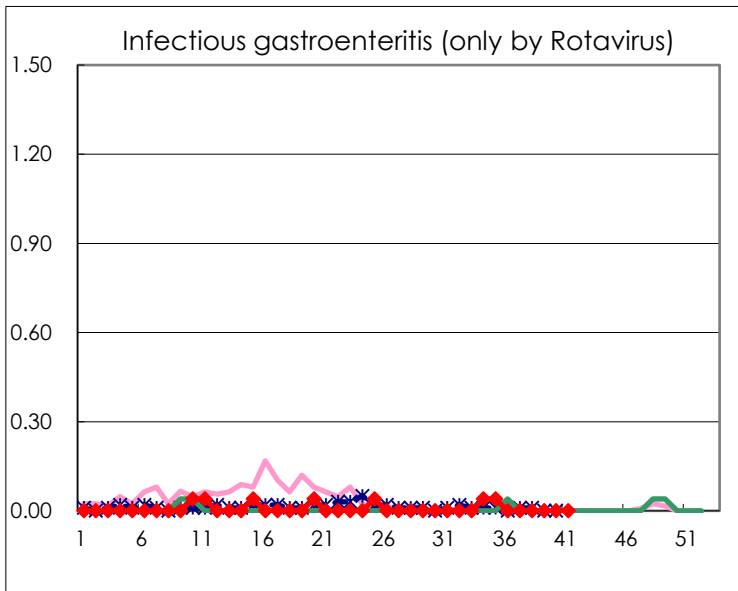
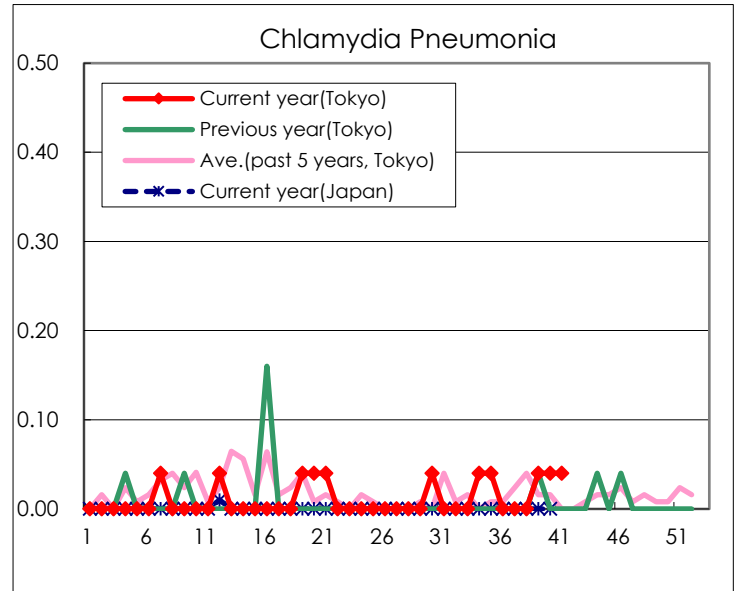
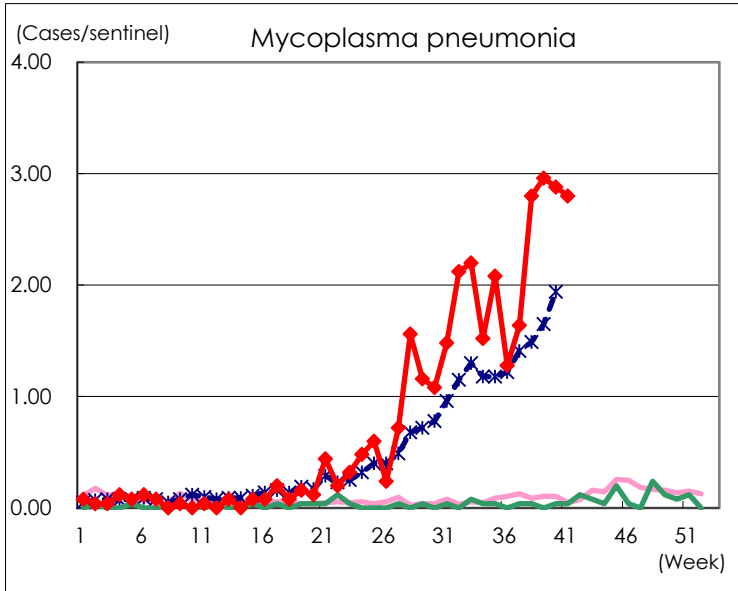
( Blank means 0. )

# Disease Trend Graph (weekly reported cases per sentinel in comparison)









Number of sentinel facilities for weekly reporting		
Types of sentinels	Number of sentinels	Sentinels having reported
Pediatric	264	263
Influenza COVID-19	419	417
Ophthalmic	39	39
Specially-designated	25	25