
INFECTIOUS DISEASES WEEKLY REPORT

TOKYO iDWR

Tokyo Metropolitan Infectious Disease Surveillance Center

24 October 2024 / Number 42
(10/14 ~ 10/20)

Surveillance System in Tokyo, Japan

The infectious diseases which all physicians must report
All physicians must report to health centers the incidence of the diseases which are shown at page one. Health centers electronically report the individual cases to Tokyo Metropolitan Infectious Disease Surveillance Center.

The infectious diseases required to be reported by the sentinels
The numbers of patients who visit the sentinel clinics or hospitals during a week are reported to health centers in Tokyo. And they electronically report the numbers to Tokyo Metropolitan Infectious Disease Surveillance Center. We have about 500 sentinel clinics and hospitals in Tokyo.

Tokyo Metropolitan Institute of Public Health

TEL:81-3-3363-3213 FAX:81-3-5332-7365

e-mail:tmiph@section.metro.tokyo.jp

URL:idsc.tmiph.metro.tokyo.lg.jp/

Number of patients with the diseases which all physicians must report

Category	Diseases	Tokyo				
		39th	40th	41st	42nd	Cum 2024
I	Ebola hemorrhagic fever					
	Crimean-Congo hemorrhagic fever					
	Smallpox					
	South American hemorrhagic fever					
	Plague					
	Marburg disease					
	Lassa fever					
II	Acute poliomyelitis					
	Tuberculosis	25	49	35	27	1,696
	Diphtheria					
	Severe Acute Respiratory Syndrome(SARS)					
	Middle East Respiratory Syndrome (MERS)					
	Avian influenza H5N1					
	Avian influenza H7N9					
III	Cholera					2
	Shigellosis		2	1		22
	Enterohemorrhagic Escherichia coli infection	16	10	20	18	386
	Typhoid fever					5
	Paratyphoid fever			1		3
IV	Hepatitis E	3		2	3	117
	West Nile fever					
	Hepatitis A		1			18
	Echinococcosis					1
	Mpox			2		14
	Yellow fever					
	Psittacosis					
	Omsk hemorrhagic fever					
	Relapsing fever					
	Kyasanur forest disease					
	Q fever					
	Rabies					
	Coccidioidomycosis					2
	Zika virus infection					
	Severe Fever with Thrombocytopenia Syndrome					
	Hemorrhagic fever with renal syndrome					
	Western equine encephalitis					
	Tick-borne encephalitis					
	Anthrax					
	Chikungunya fever			1		1
	Scrub typhus(Tsutsugamushi disease)					
	Dengue fever	4	2		1	58
	Eastern equine encephalitis					
	Avian influenza (excluding H5N1 and H7N9)					
	Nipah virus infection					
	Japanese spotted fever					
	Japanese encephalitis					
	Hantavirus pulmonary syndrome					
	Herpes B virus infection					
	Glanders					
	Brucellosis					
	Venezuelan equine encephalitis					
	Hendra virus infection					
Epidemic typhus						
Botulism						
Malaria					9	
Tularemia						
Lyme disease					1	
Lyssavirus infection(excluding rabies)						
Rift valley fever						
Melioidosis						
Legionellosis	3	3	14	11	191	
Leptospirosis	1	1			5	
Rocky mountain spotted fever						

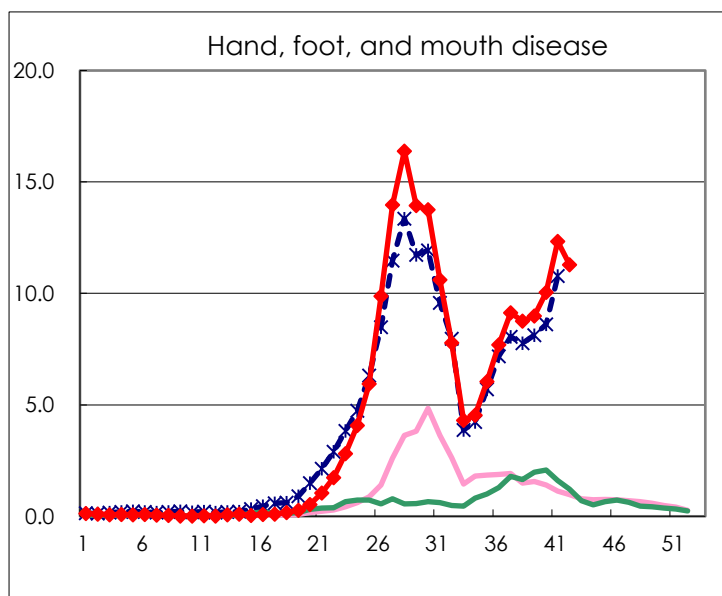
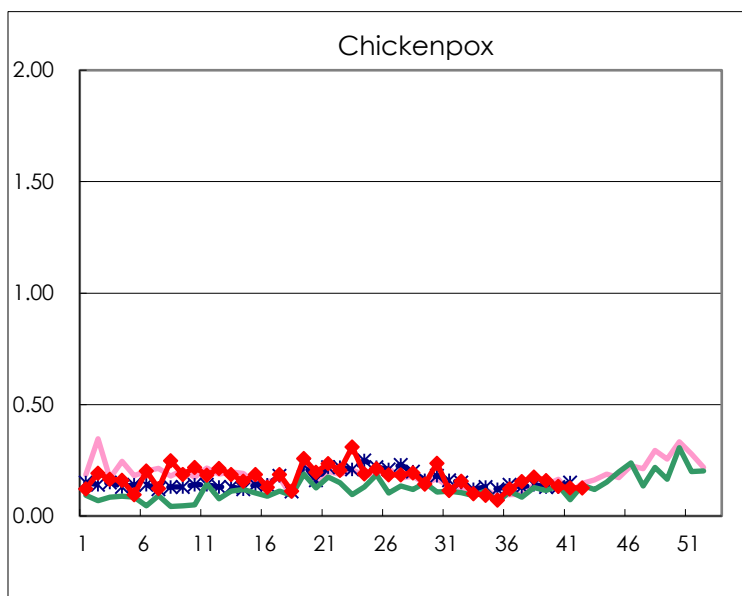
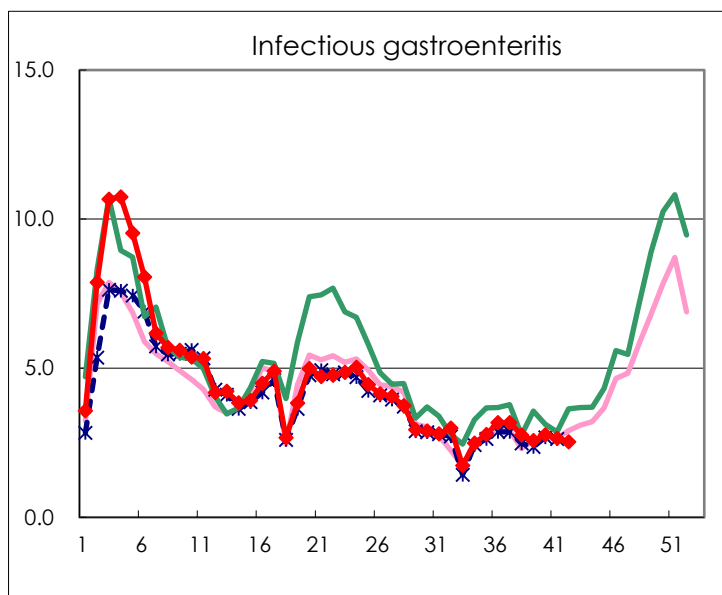
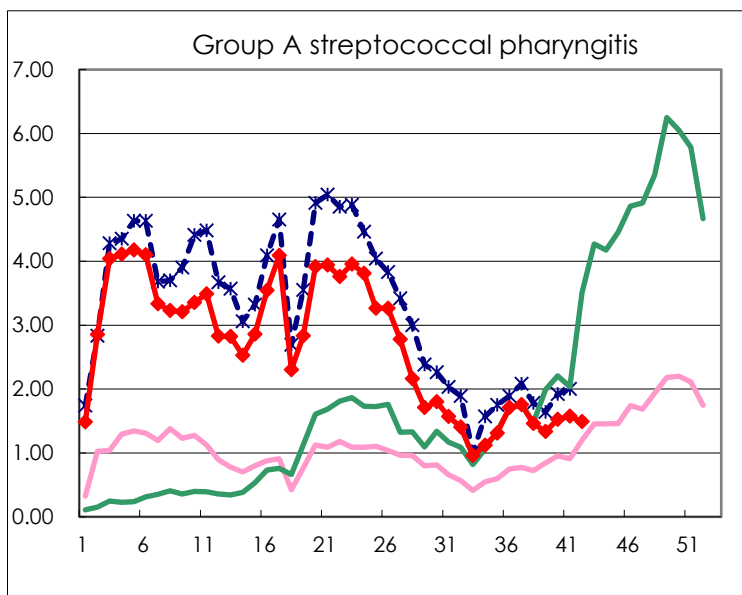
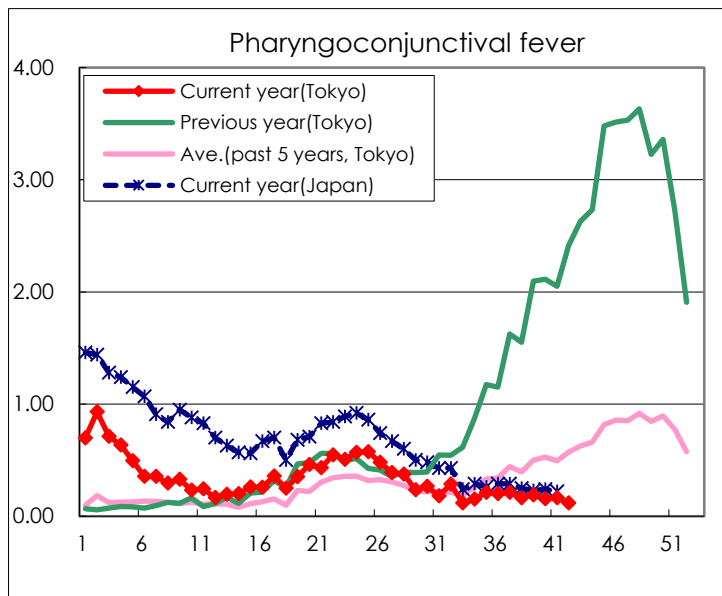
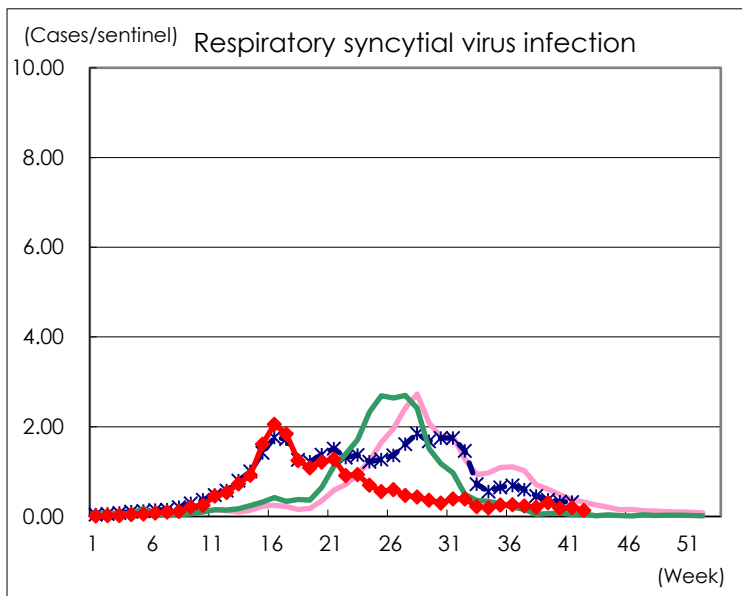
Category	Diseases	Tokyo				
		39th	40th	41st	42nd	Cum 2024
V	Amebiasis	2	2		1	85
	Viral hepatitis(excluding hepatitis A and E)		1	1	1	34
	CRE infection	2	6	6	4	161
	Acute Flaccid Paralysis (excluding Acute poliomyelitis)					4
	Acute encephalitis(excluding JE and WNE)			1		33
	Cryptosporidiosis		1	1		12
	Creutzfeldt-Jakob disease					9
	Severe invasive streptococcal infections(TSLS)	3	2	1	6	217
	Acquired immunodeficiency syndrome (AIDS)	6	5	6	2	230
	Giardiasis			1		12
	Invasive <i>Haemophilus influenzae</i> disease	3		2		53
	Invasive meningococcal disease	2				9
	Invasive pneumococcal disease	2	3	3	2	208
	Varicella (limited to hospitalized case)	1	2	1		52
	Congenital rubella syndrome					
	Syphilis	90	77	75	47	3,011
	Disseminated cryptococcosis	1			1	19
	Tetanus					1
	Vancomycin-resistant <i>S. aureus</i> infection					
	Vancomycin-resistant <i>Enterococcus</i> infection			1		7
	Pertussis	13	11	22	14	235
Rubella					1	
Measles				1	10	
MDRA infection					1	

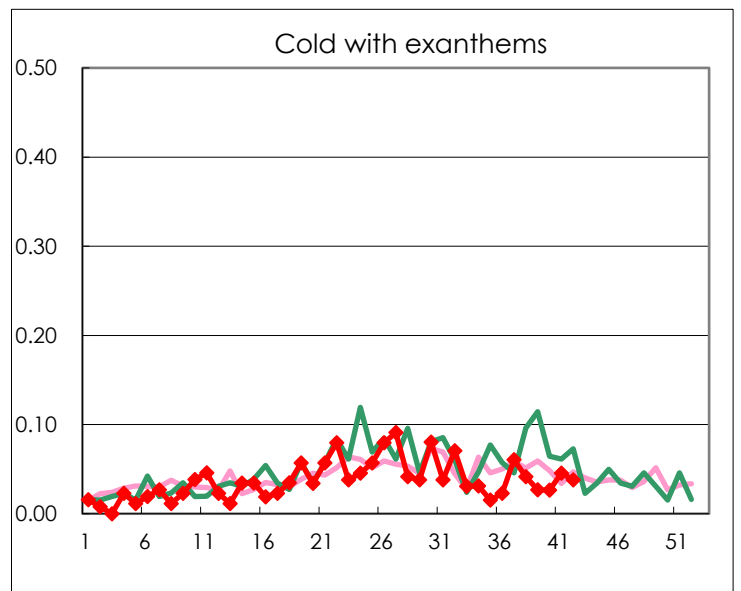
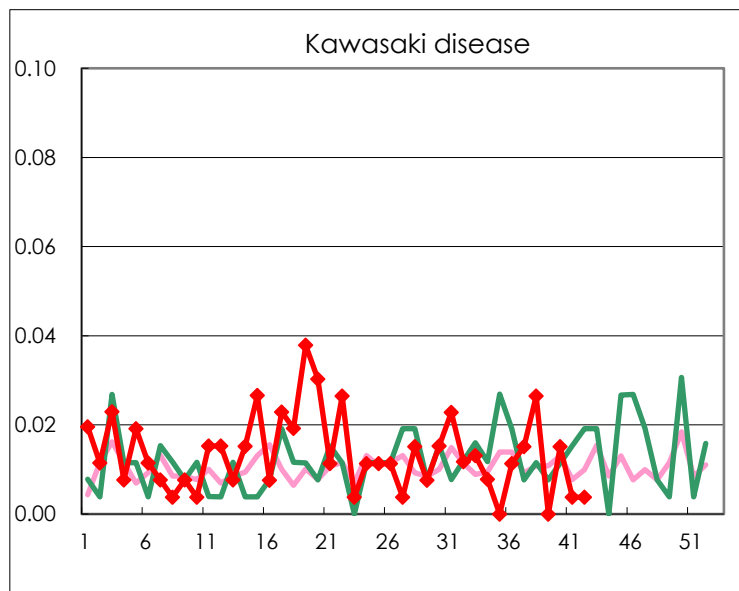
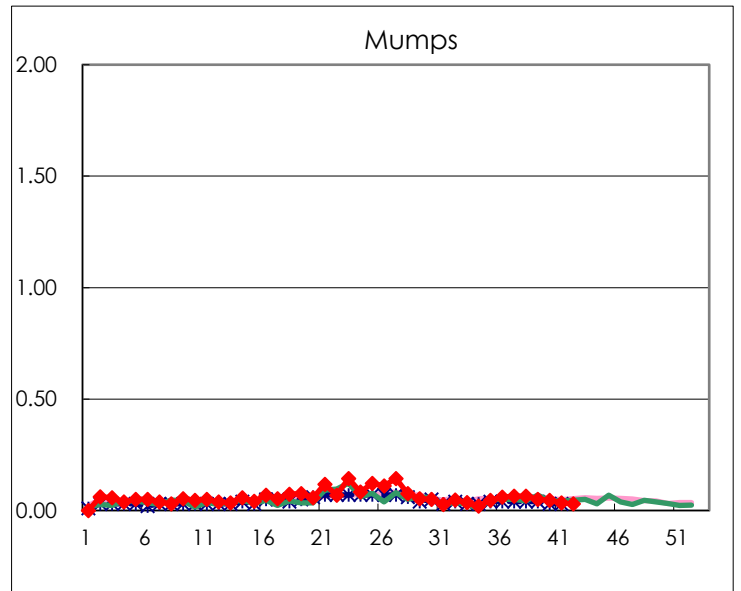
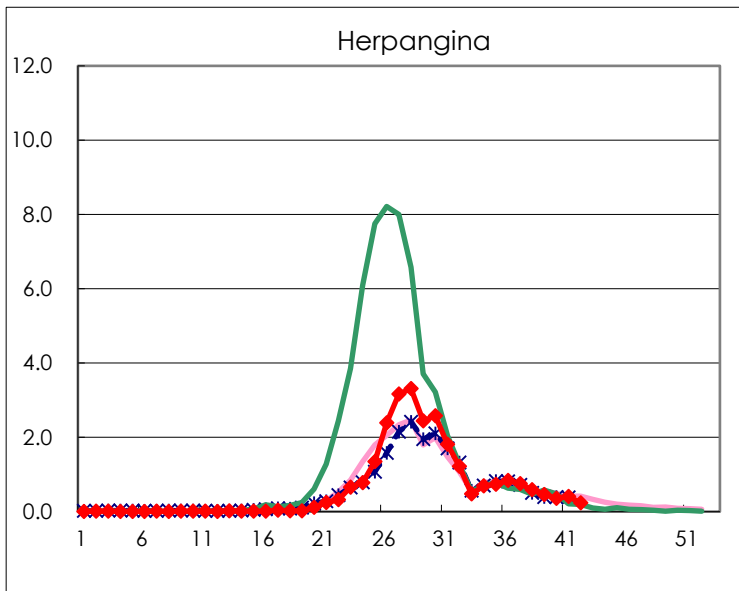
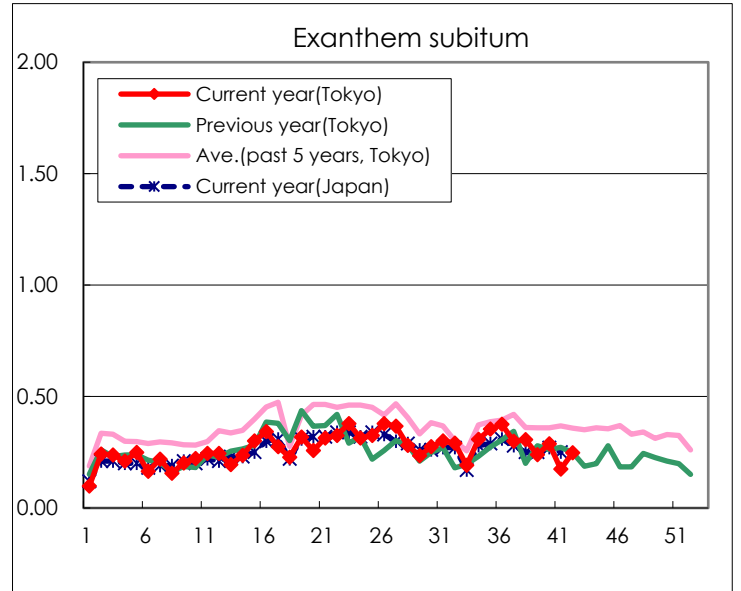
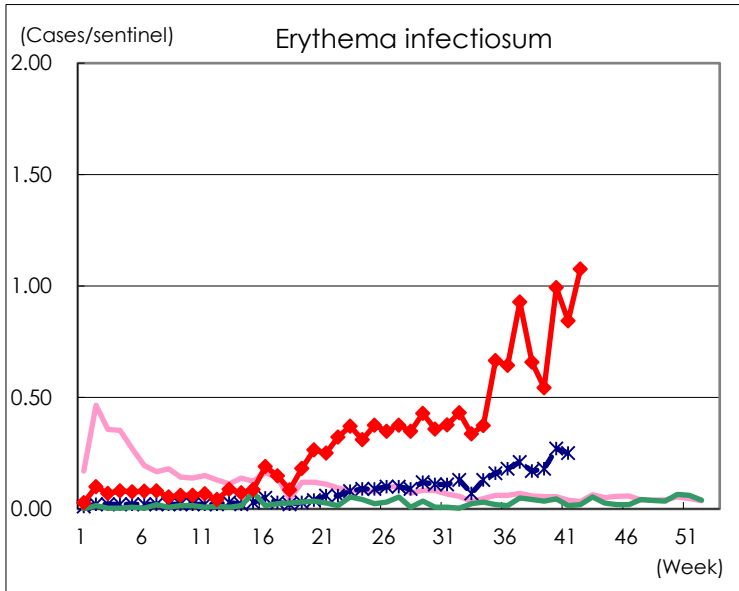
Number of patients with the diseases to be reported
by the designated clinics and hospitals

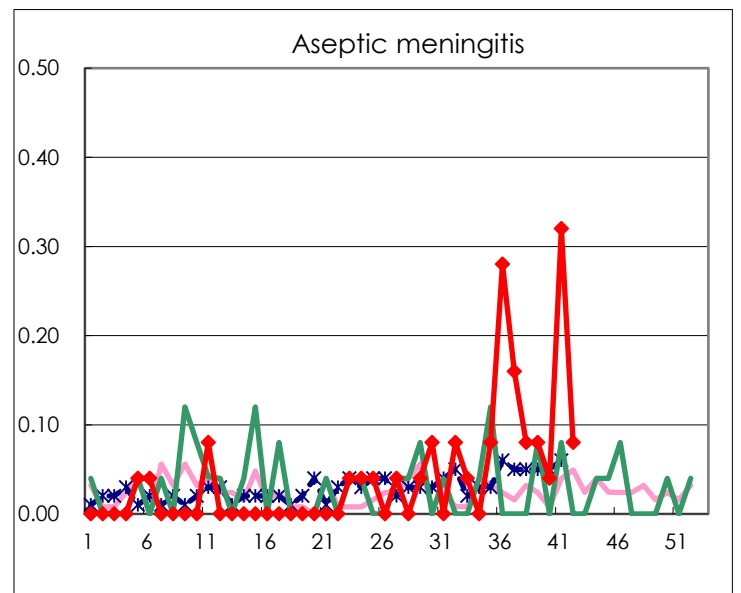
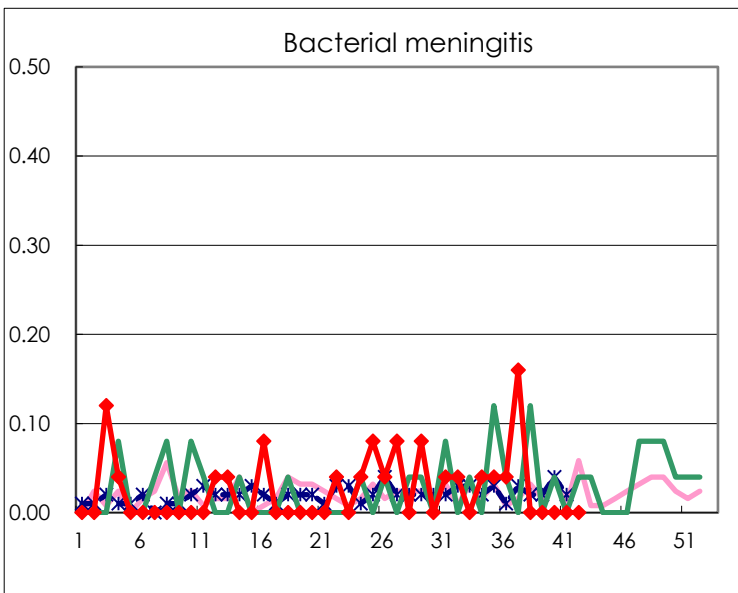
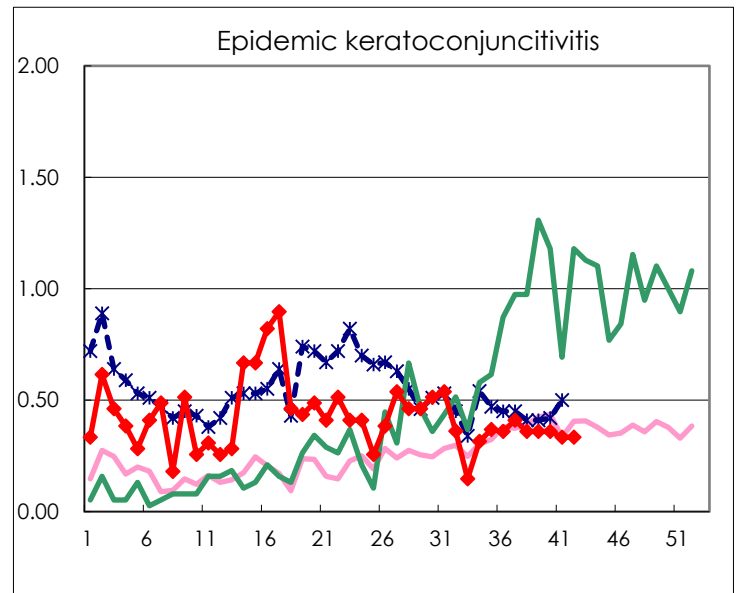
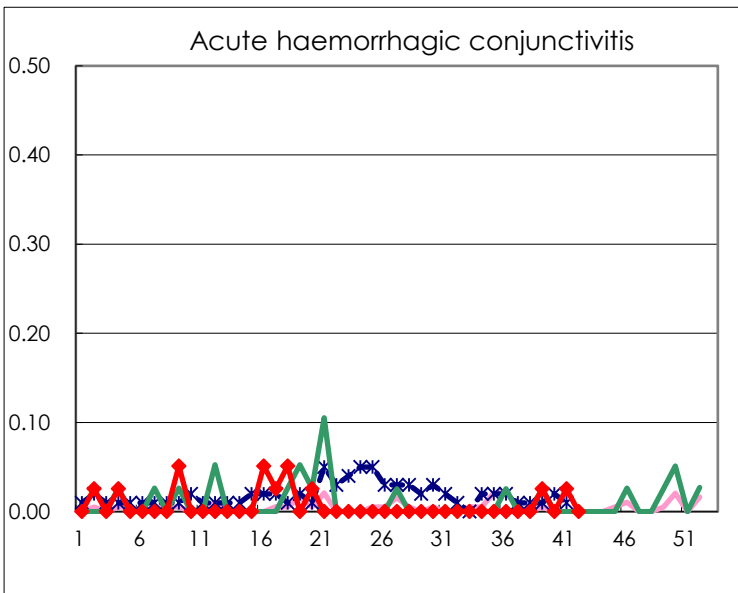
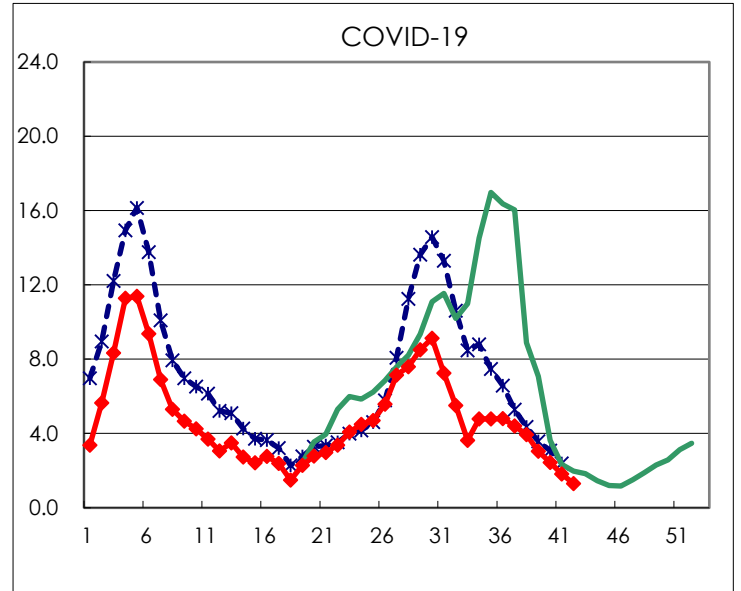
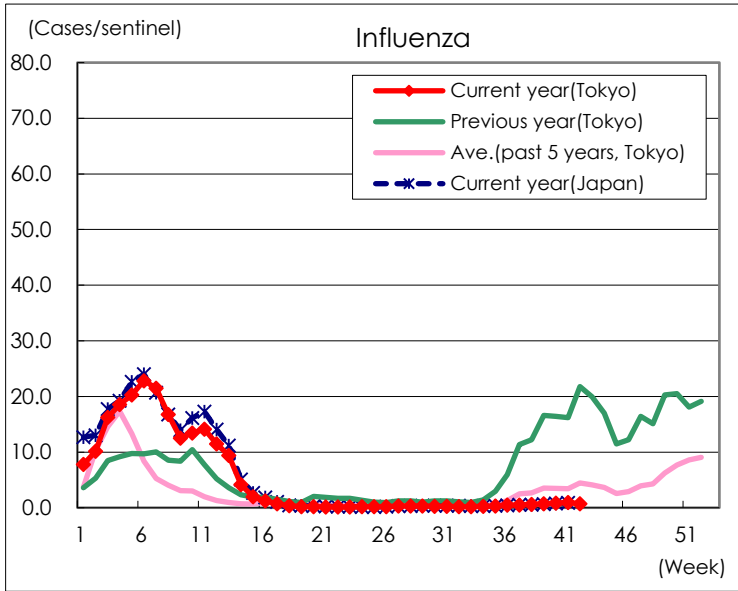
Diseases	Tokyo				
	39th	40th	41st	42nd	/sentinel
Respiratory syncytial virus infection	81	50	53	35	0.13
Pharyngoconjunctival fever	50	41	43	31	0.12
Group A streptococcal pharyngitis	351	402	414	392	1.49
Infectious gastroenteritis	678	730	698	666	2.53
Chickenpox	42	35	33	33	0.13
Hand, foot, and mouth disease	2,363	2,655	3,243	2,967	11.28
Erythema infectiosum	143	262	222	283	1.08
Exanthem subitum	63	76	46	65	0.25
Herpangina	122	94	108	61	0.23
Mumps	13	12	9	8	0.03
Kawasaki disease		4	1	1	0.00
Cold with exanthems	7	7	12	10	0.04
Influenza	290	335	395	308	0.74
COVID-19	1,272	1,025	758	543	1.30
Acute hemorrhagic conjunctivitis	1		1		
Epidemic keratoconjunctivitis	14	14	13	13	0.33
Bacterial meningitis					
Aseptic meningitis	2	1	8	2	0.08
<i>Mycoplasma pneumoniae</i>	74	72	70	96	3.84
<i>Chlamydia pneumoniae</i> (excluding <i>psittacosis</i>)	1	1	1	4	0.16
Infectious gastroenteritis (only by Rotavirus)					
Influenza-Associated Hospitalizations	5	6	9	1	0.04
COVID-19-Associated Hospitalizations	94	78	91	51	2.04

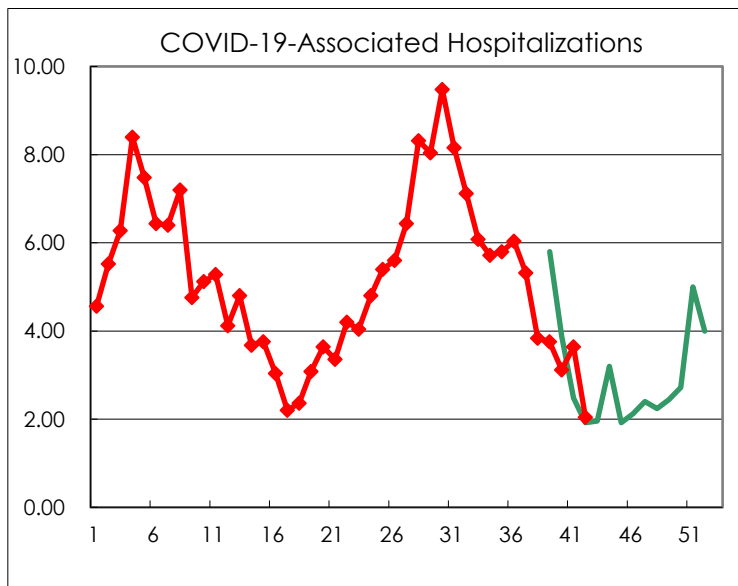
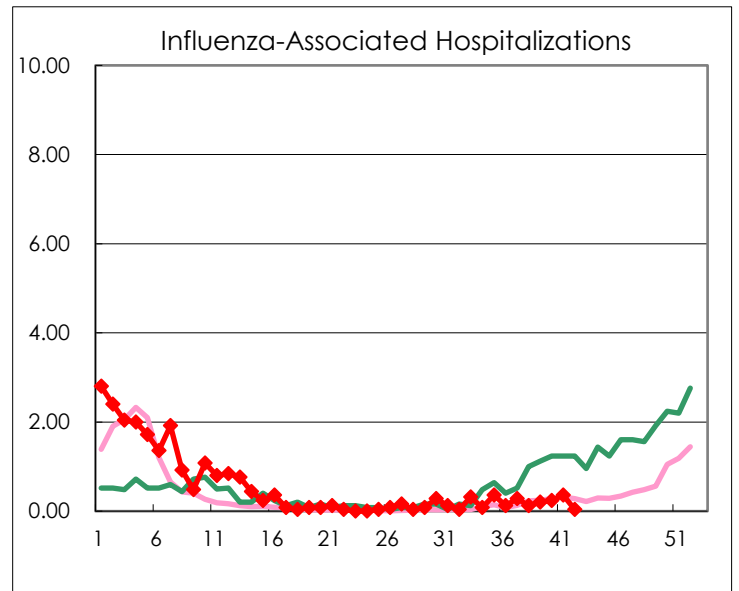
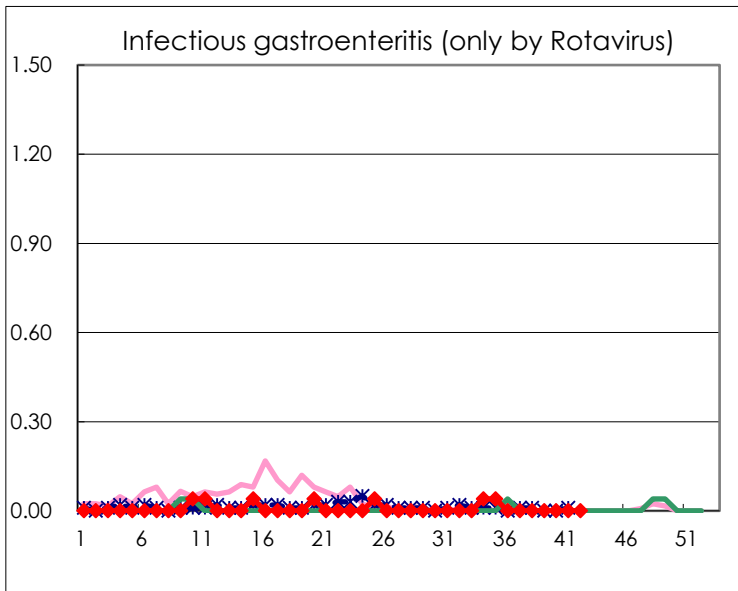
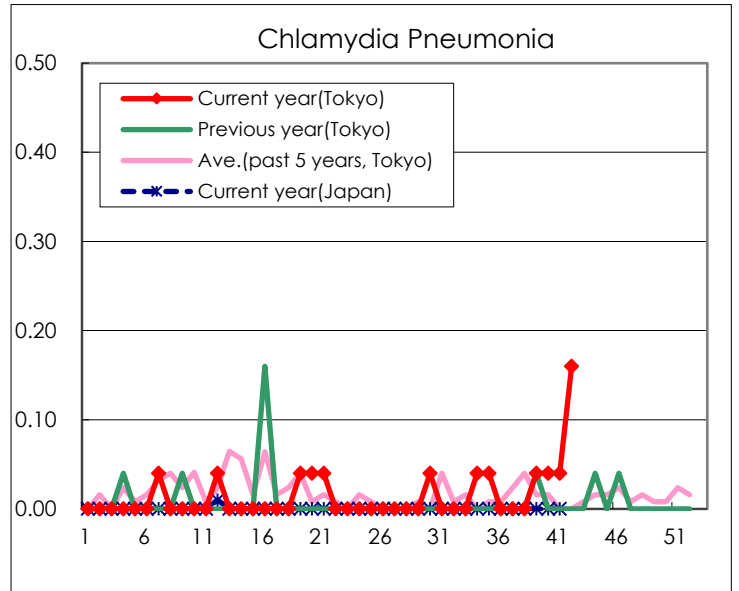
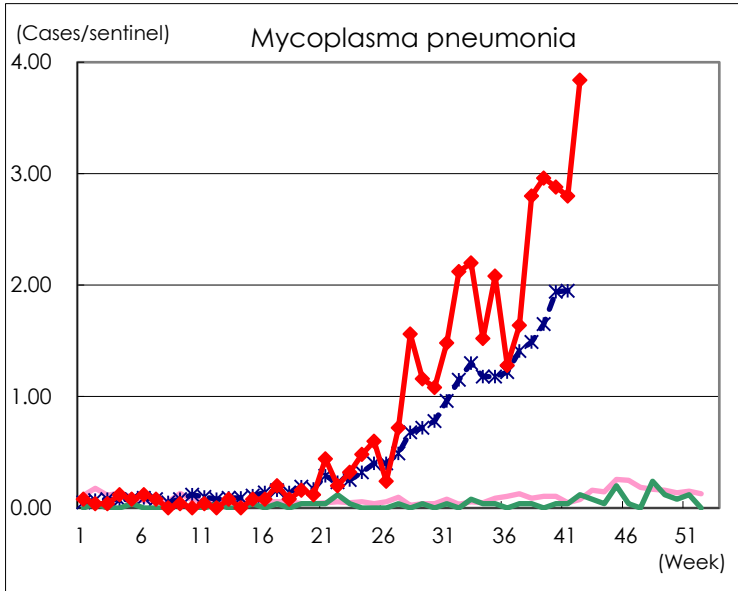
(Blank means 0.)

Disease Trend Graph (weekly reported cases per sentinel in comparison)









Number of sentinel facilities for weekly reporting		
Types of sentinels	Number of sentinels	Sentinels having reported
Pediatric	264	263
Influenza COVID-19	419	418
Ophthalmic	39	39
Specially-designated	25	25