

2024年11月7日 / 44号
10月28日 - 11月3日

东京传染病监控系统

所有医生均必须上报的传染病

医生必须向卫生所通报发生该疾病。卫生所则向東京都传染病信息中心报告个别案例。

定点医疗机构上报的传染病

由定点诊所或医院每周向卫生所上报来访患者数量。卫生所则向東京都传染病信息中心报告患者总数。东京都内约有500家定点诊所与医院。

東京都健康安全研究中心

TEL:81-3-3363-3213 FAX:81-3-5332-7365

e-mail:tmiph@section.metro.tokyo.jp

URL:idscc.tmiph.metro.tokyo.lg.jp/

全数掌握对象疾病 上报数量

类别	疾病	Diseases	东京				
			第41周	第42周	第43周	第44周	2024年累计
I	埃博拉出血热	Ebola hemorrhagic fever					
	克里米亚 - 刚果出血热	Crimean-Congo hemorrhagic fever					
	天花	Smallpox					
	南美出血热	South American hemorrhagic fever					
	鼠疫	Plague					
	马尔堡出血热	Marburg disease					
II	拉萨热	Lassa fever					
	脊髓灰质炎 (小儿麻痹)	Acute poliomyelitis					
	结核病	Tuberculosis	37	27	41	49	1,786
	白喉	Diphtheria					
	严重急性呼吸系统综合症 (SARS)	Severe Acute Respiratory Syndrome (SARS)					
	中东呼吸综合症	Middle East Respiratory Syndrome (MERS)					
	禽流感 (H5N1)	Avian influenza H5N1					
III	禽流感 (H7N9)	Avian influenza H7N9					
	霍乱	Cholera					2
	细菌性痢疾	Shigellosis	1		1		23
	肠道出血性大肠杆菌感染症	Enterohemorrhagic Escherichia coli infection	21	18	19	10	416
	伤寒	Typhoid fever					5
	副伤寒	Paratyphoid fever					2
IV	E型肝炎	Hepatitis E	2	3	2	5	124
	西尼罗热	West Nile fever					
	A型肝炎	Hepatitis A					18
	棘球蚴病	Echinococcosis					1
	Mpox	Mpox	2				14
	黄热病	Yellow fever					
	鹦鹉热	Psittacosis					
	鄂木斯克出血热	Omsk hemorrhagic fever					
	回归热	Relapsing fever					
	夸赛纳森林病 (Kysanur forest disease)	Kyasanur forest disease					
	Q型流感	Q fever					
	狂犬病	Rabies					
	球孢子菌病	Coccidioidomycosis					2
	兹卡病毒感染症	Zika virus infection					
	发热伴血小板减少综合症	Severe Fever with Thrombocytopenia Syndrome					
	肾综合症出血热	Hemorrhagic fever with renal syndrome					
	西部马脑炎	Western equine encephalitis					
	蜱媒脑炎	Tick-borne encephalitis					
	炭疽病	Anthrax					
	屈公病	Chikungunya fever	1			1	2
	恙虫病	Scrub typhus (Tsutsugamushi disease)					
	登革热	Dengue fever		1		2	60
	东部马脑炎	Eastern equine encephalitis					
	禽流感 (除H5N1、H7N9以外)	Avian influenza (excluding H5N1 and H7N9)					
	立百病毒感染症	Nipah virus infection					
	日本红斑热	Japanese spotted fever					
	日本脑炎	Japanese encephalitis					
	汉坦病毒肺综合症	Hantavirus pulmonary syndrome					
	猴疱疹	Herpes B virus infection					
	马鼻疽	Glanders					
	布鲁氏杆菌病	Brucellosis					
	委内瑞拉马脑炎 (Venezuelan equine encephalitis)	Venezuelan equine encephalitis					
	亨德拉病毒感染症	Hendra virus infection					
斑疹伤寒	Epidemic typhus						
肉毒杆菌中毒	Botulism						
疟疾	Malaria					9	
兔热病	Tularemia						
莱姆病	Lyme disease					1	
丽莎病毒感染症	Lyssavirus infection (excluding rabies)						
裂谷热	Rift valley fever						
类鼻疽	Melioidosis						
退伍军人症	Legionellosis	14	12	10	8	210	
钩端螺旋体病	Leptospirosis					5	
落基山斑疹热	Rocky mountain spotted fever						

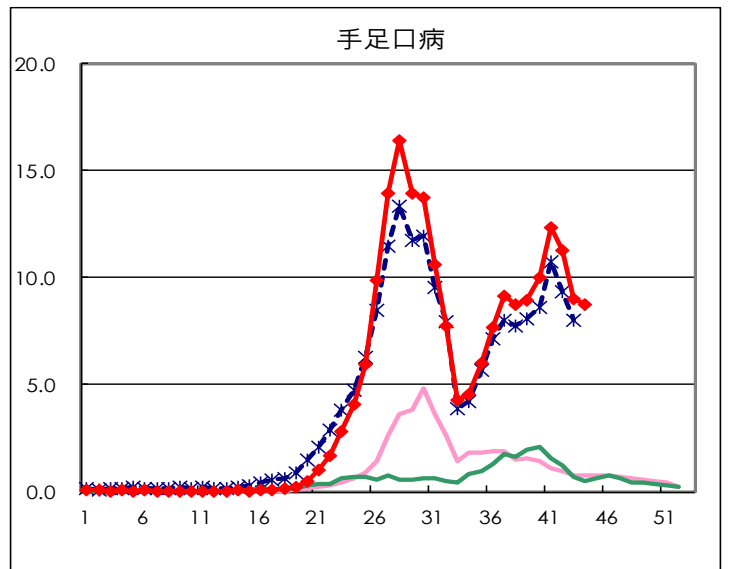
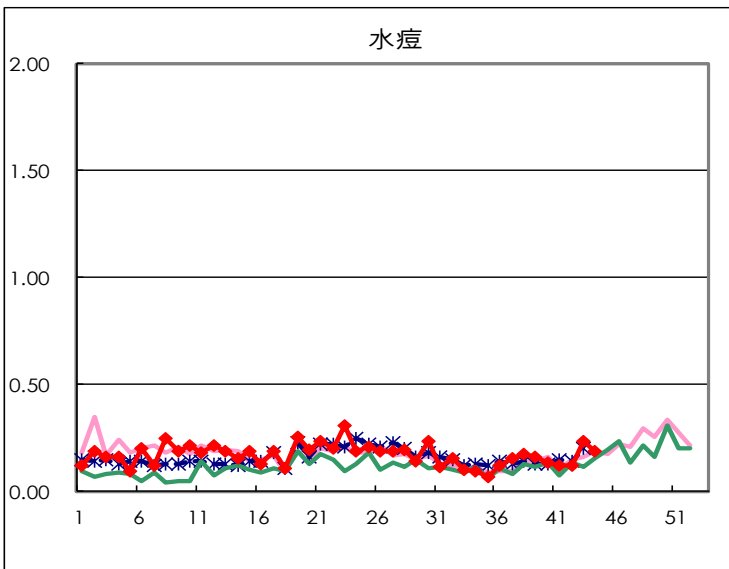
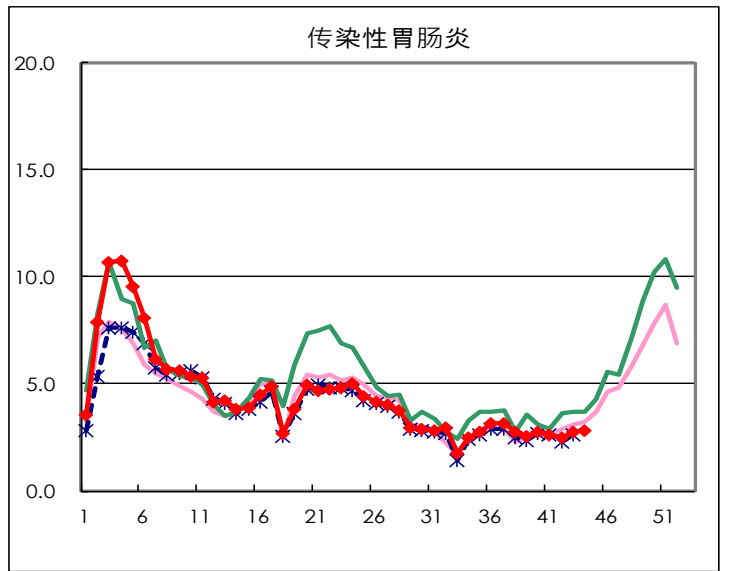
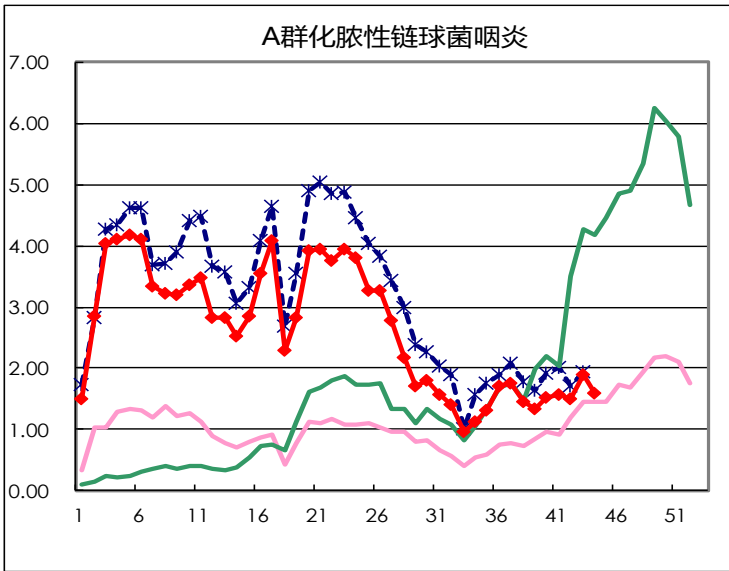
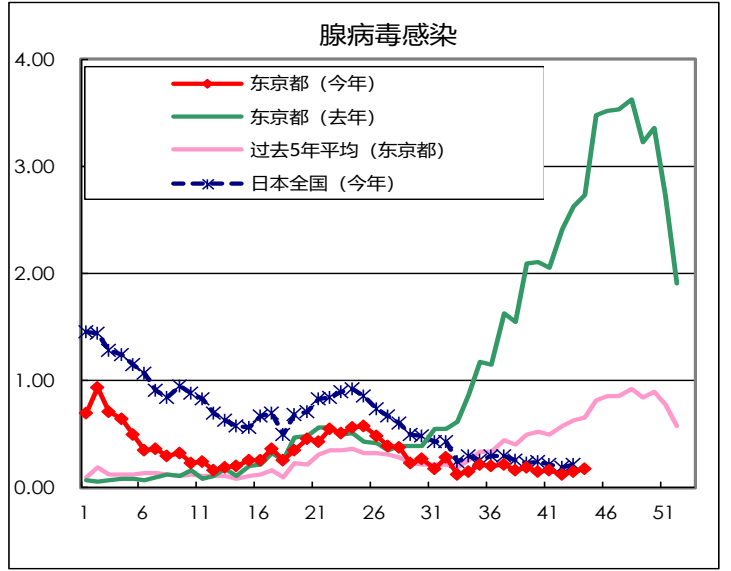
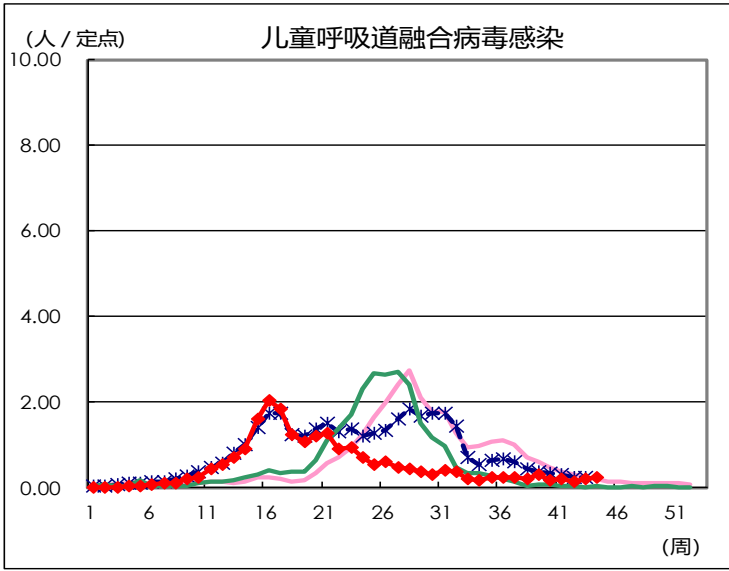
类别	疾病	Diseases	东京				
			第41周	第42周	第43周	第44周	2024年累计
V	阿米巴痢疾	Amebiasis		1	3	2	90
	病毒性肝炎 (除A型、E型以外)	Viral hepatitis (excluding hepatitis A and E)	1	1		1	35
	CRE infection	CRE infection	6	5	5	4	171
	急性弛缓性麻痹 (excluding Acute poliomyelitis)	Acute Flaccid Paralysis (excluding Acute poliomyelitis)					4
	急性脑炎	Acute encephalitis (excluding JE and WNE)	1		2	1	36
	隐孢子虫病	Cryptosporidiosis	1			1	13
	库贾氏病	Creutzfeldt-Jakob disease					9
	酿脓链球菌 (Streptococcus pyogenes) 感染症	Severe invasive streptococcal infections (TSLs)	1	6	2	2	221
	后天免疫缺陷综合征	Acquired immunodeficiency syndrome (AIDS)	6	3	8	5	244
	贾第虫病	Giardiasis	1				12
	侵袭性嗜血杆菌感染症	Invasive <i>Haemophilus influenzae</i> disease	2			3	56
	侵袭性脑膜炎感染症	Invasive meningococcal disease					10
	侵袭性肺炎链球菌感染症	Invasive pneumococcal disease	3	2	4	5	217
	水痘 (仅限住院病例)	Varicella (limited to hospitalized case)	1		1	3	56
	先天性德国麻疹综合征	Congenital rubella syndrome					
	梅毒	Syphilis	79	63	77	70	3,178
	播散性隐球菌症	Disseminated cryptococcosis		1			19
	破伤风	Tetanus				1	2
	万古霉素耐药金黄色葡萄球菌 (Vancomycin-resistant <i>Staphylococcus aureus</i> , VRSA) 感染症	Vancomycin-resistant <i>S. aureus</i> infection					
	万古霉素抗性肠球菌 (Vancomycin-Resistant Enterococci, VRE) 感染症	Vancomycin-resistant Enterococcus infection	1				7
百日咳	Pertussis	22	16	9	14	260	
德国麻疹	Rubella					1	
麻疹	Measles		1			10	
抗药性不动杆菌感染症	MDRA infection					1	

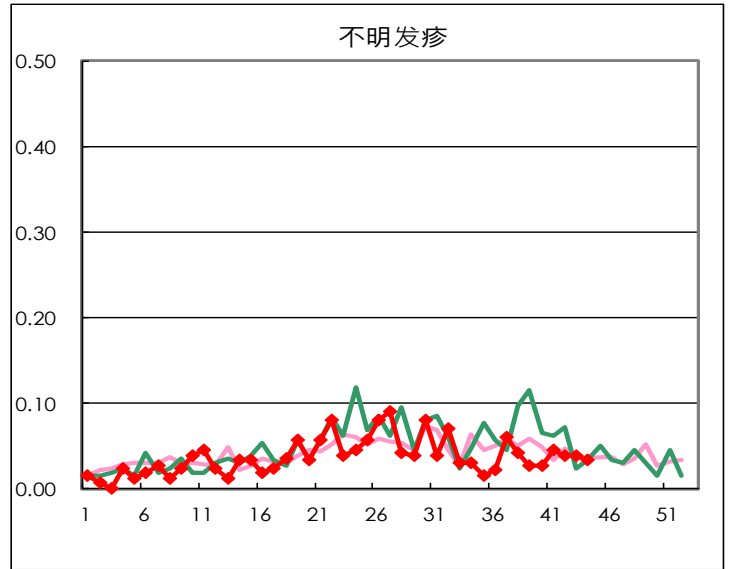
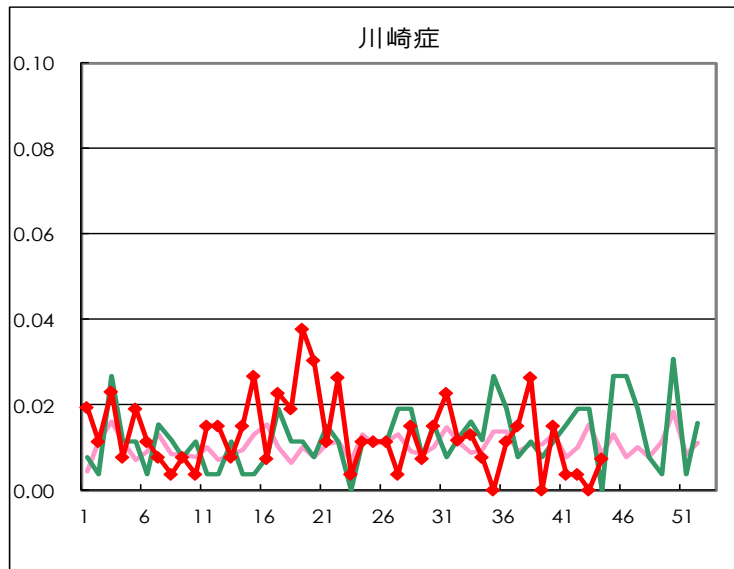
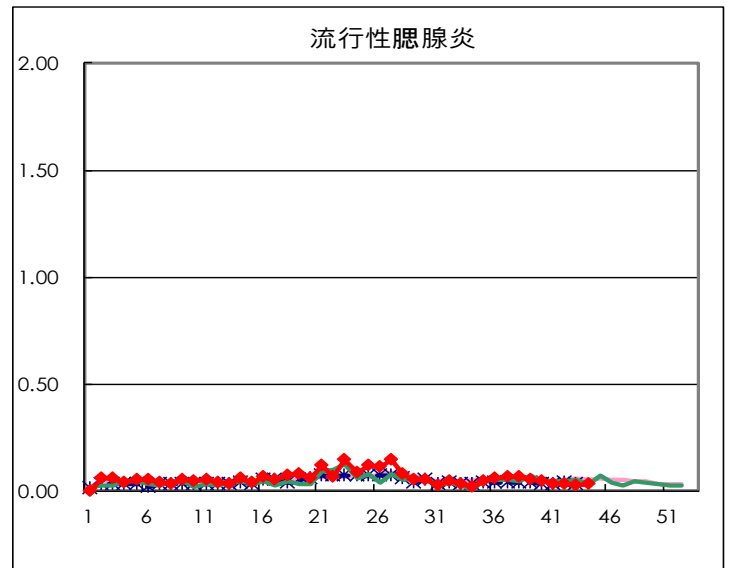
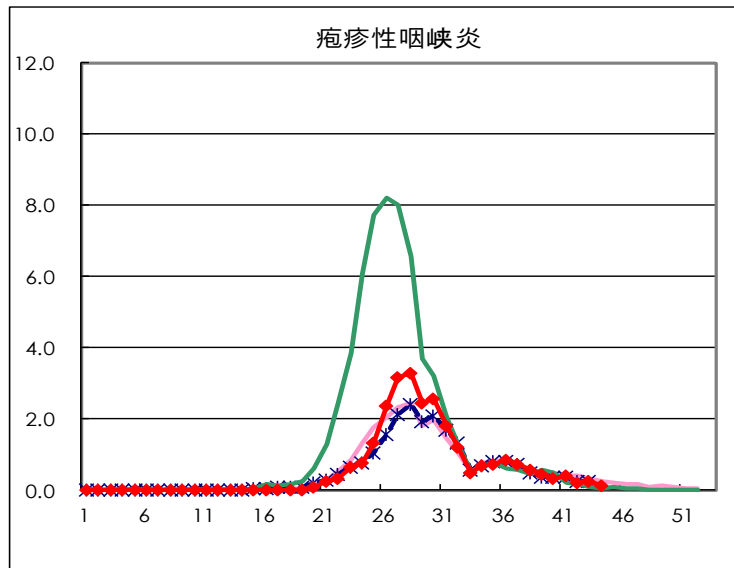
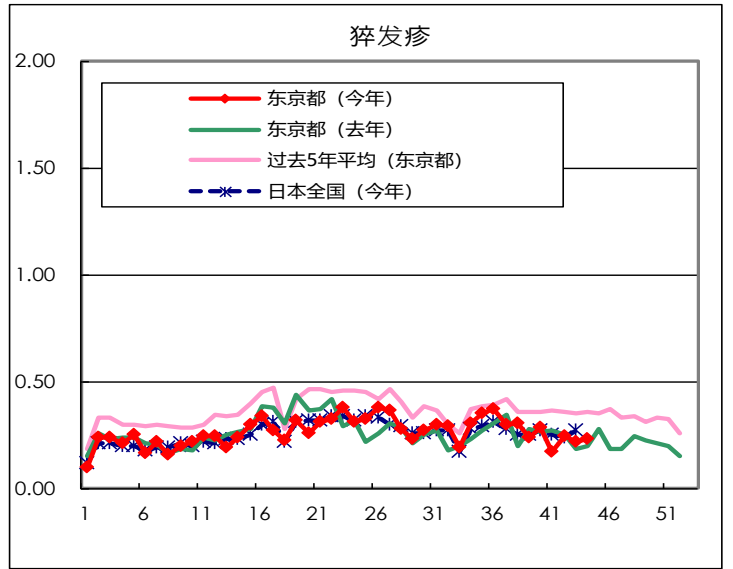
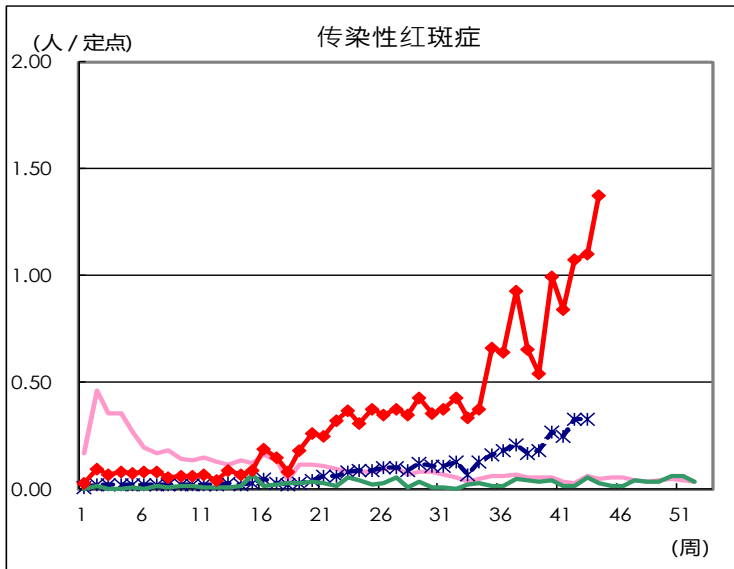
定点掌握对象疾病报告数量

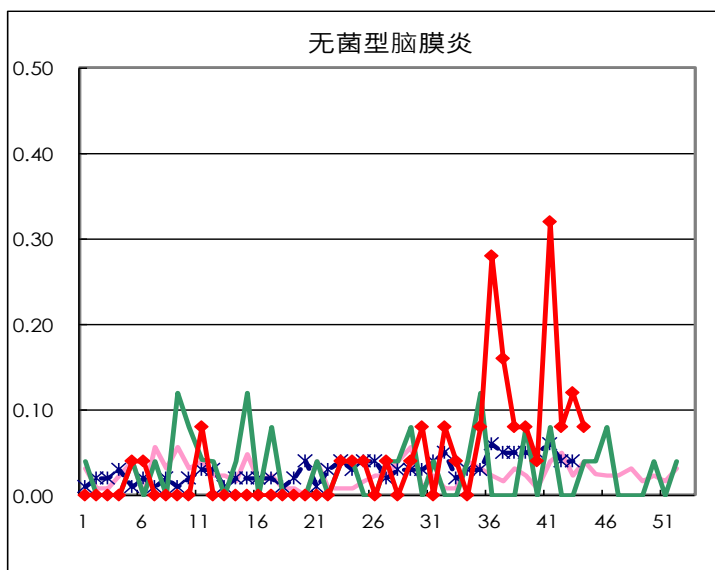
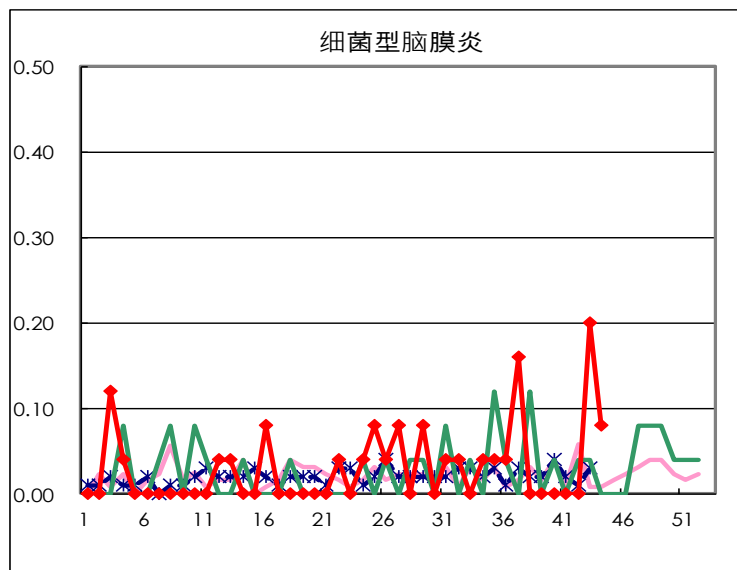
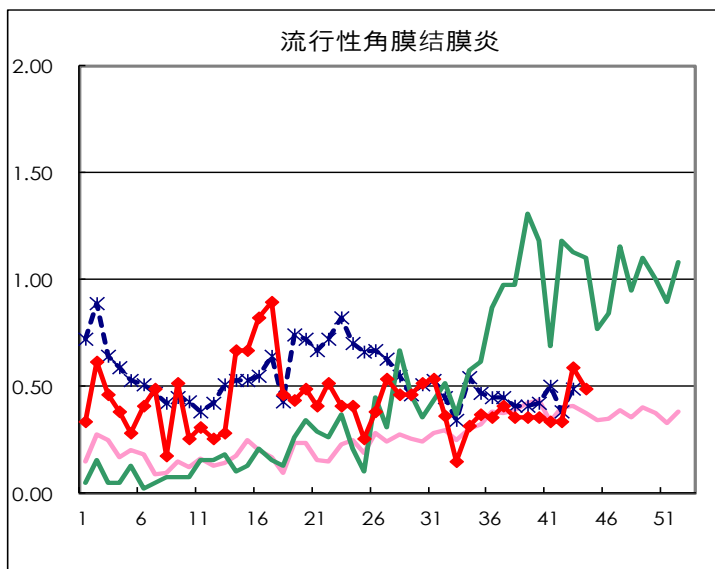
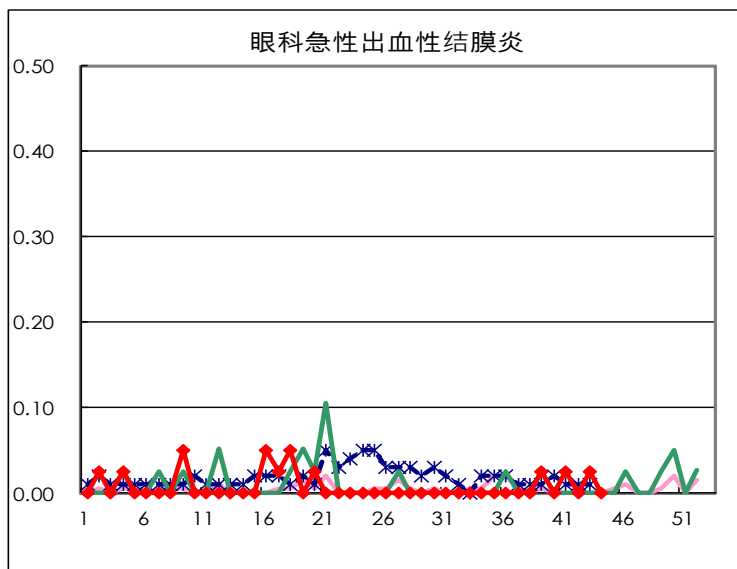
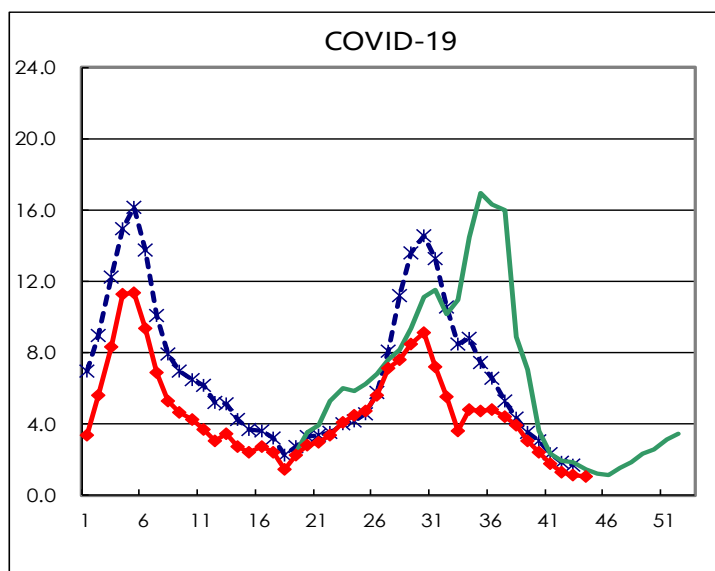
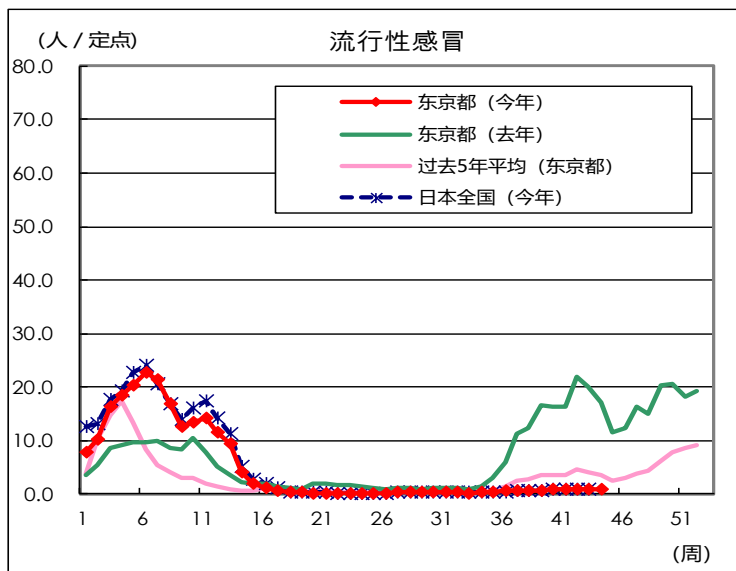
疾病	Diseases	东京				
		第41周	第42周	第43周	第44周	每哨兵
儿童呼吸道融合病毒感染	Respiratory syncytial virus infection	53	35	52	66	0.25
腺病毒感染	Pharyngoconjunctival fever	43	31	39	45	0.17
A群化脓性链球菌咽炎	Group A streptococcal pharyngitis	414	392	499	418	1.58
传染性胃肠炎	Infectious gastroenteritis	698	666	723	743	2.81
水痘	Chickenpox	33	33	62	50	0.19
手足口病	Hand, foot, and mouth disease	3,243	2,967	2,373	2,311	8.75
传染性红斑症	Erythema infectiosum	222	283	290	363	1.38
猝发疹	Exanthem subitum	46	65	58	62	0.23
疱疹性咽峡炎	Herpangina	108	61	70	40	0.15
流行性腮腺炎	Mumps	9	8	6	8	0.03
川崎症	Kawasaki disease	1	1		2	0.01
不明发疹	Cold with exanthems	12	10	10	9	0.03
流行性感冒	Influenza	395	308	307	386	0.92
COVID-19	COVID-19	758	543	491	456	1.09
眼科急性出血性结膜炎	Acute hemorrhagic conjunctivitis	1		1		
流行性角膜结膜炎	Epidemic keratoconjunctivitis	13	13	23	19	0.49
细菌型脑膜炎	Bacterial meningitis			5	2	0.08
无菌型脑膜炎	Aseptic meningitis	8	2	3	2	0.08
霉浆菌肺炎	Mycoplasma pneumonia	83	112	121	107	4.28
披衣菌肺炎 (除鹦鹉病外)	Chlamydial pneumonia (excluding psittacosis)	1	4		2	0.08
感染性肠胃炎 (轮状病毒)	Infectious gastroenteritis (only by Rotavirus)					
流行性感冒住院	Influenza-Associated Hospitalizations	9	1	5	13	0.52
COVID-19-Associated Hospitalizations	COVID-19-Associated Hospitalizations	91	51	56	53	2.12

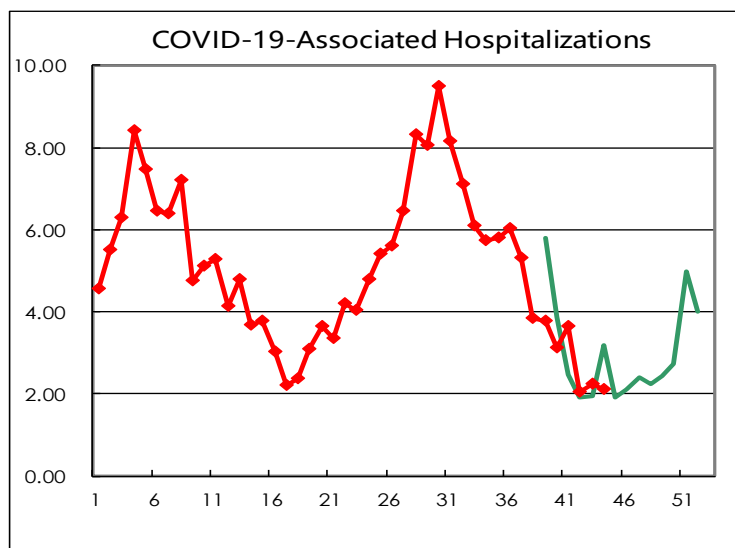
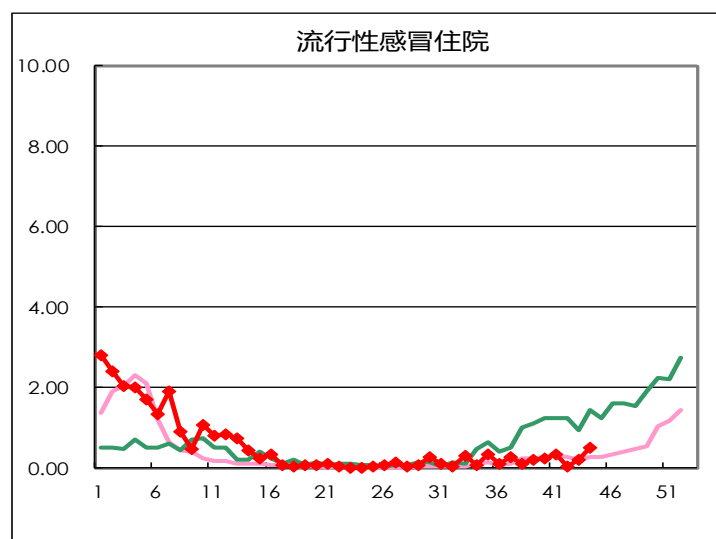
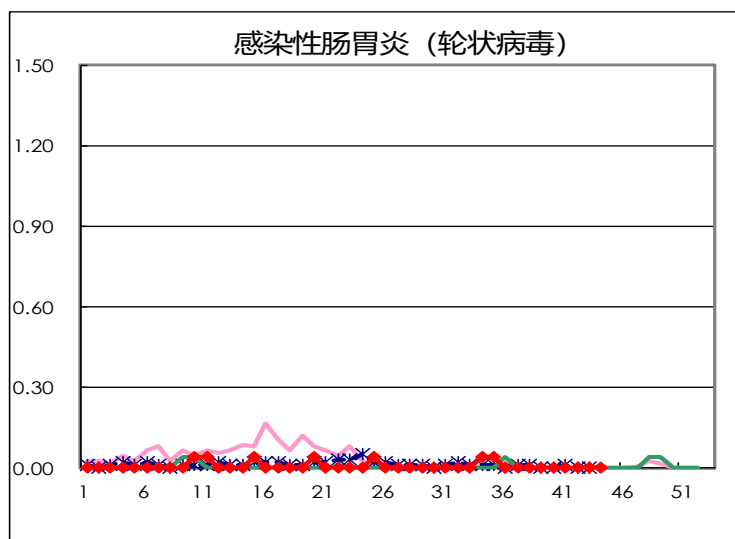
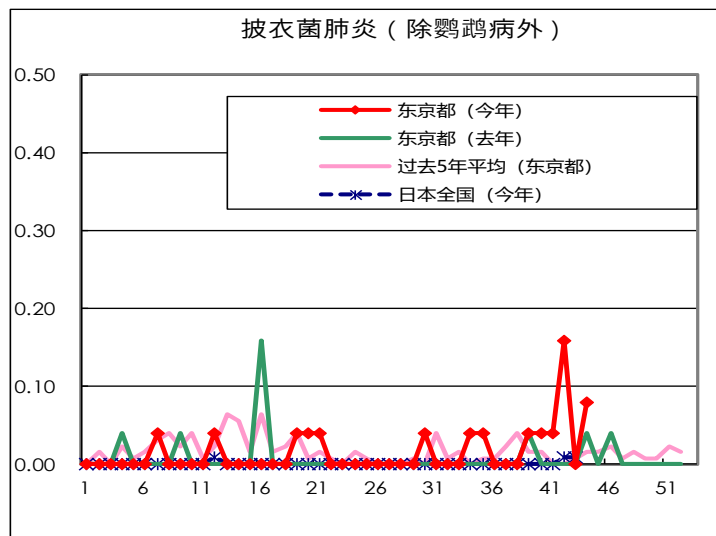
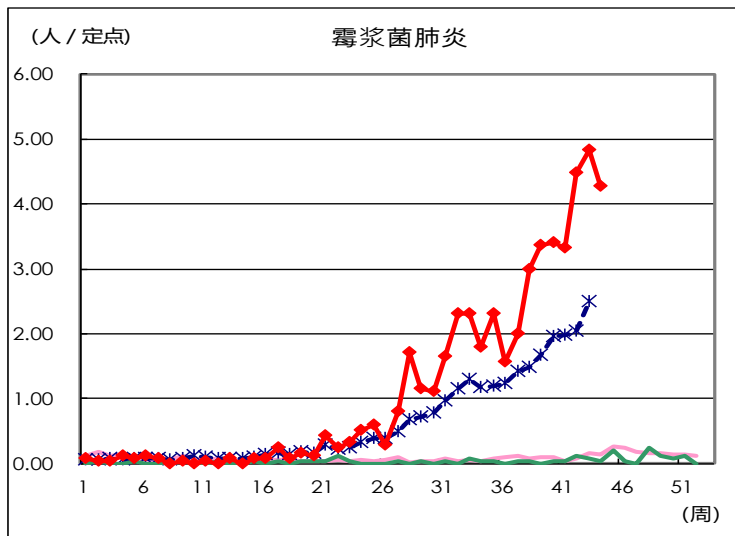
(空白为0)

定点掌握对象疾病在每定点医疗机构的报告数量









每周报告的哨点设施数量

哨兵的类型	定点医疗机构数量	报告医疗机构数量
小儿科的	264	264
流行性感冒 COVID-19	419	418
眼科	39	39
专门设计的	25	25