
INFECTIOUS DISEASES WEEKLY REPORT

TOKYO iDWR

Tokyo Metropolitan Infectious Disease Surveillance Center

7 November 2024 / Number 44
(10/28 ~ 11/3)

Surveillance System in Tokyo, Japan

The infectious diseases which all physicians must report
All physicians must report to health centers the incidence of the diseases which are shown at page one. Health centers electronically report the individual cases to Tokyo Metropolitan Infectious Disease Surveillance Center.

The infectious diseases required to be reported by the sentinels
The numbers of patients who visit the sentinel clinics or hospitals during a week are reported to health centers in Tokyo. And they electronically report the numbers to Tokyo Metropolitan Infectious Disease Surveillance Center. We have about 500 sentinel clinics and hospitals in Tokyo.

Tokyo Metropolitan Institute of Public Health

TEL:81-3-3363-3213 FAX:81-3-5332-7365

e-mail:tmiph@section.metro.tokyo.jp

URL:idsc.tmiph.metro.tokyo.lg.jp/

Number of patients with the diseases which all physicians must report

Category	Diseases	Tokyo				
		41st	42nd	43rd	44th	Cum 2024
I	Ebola hemorrhagic fever					
	Crimean-Congo hemorrhagic fever					
	Smallpox					
	South American hemorrhagic fever					
	Plague					
	Marburg disease					
	Lassa fever					
II	Acute poliomyelitis					
	Tuberculosis	37	27	41	49	1,786
	Diphtheria					
	Severe Acute Respiratory Syndrome(SARS)					
	Middle East Respiratory Syndrome (MERS)					
	Avian influenza H5N1					
	Avian influenza H7N9					
III	Cholera					2
	Shigellosis	1		1		23
	Enterohemorrhagic Escherichia coli infection	21	18	19	10	416
	Typhoid fever					5
	Paratyphoid fever					2
IV	Hepatitis E	2	3	2	5	124
	West Nile fever					
	Hepatitis A					18
	Echinococcosis					1
	Mpox	2				14
	Yellow fever					
	Psittacosis					
	Omsk hemorrhagic fever					
	Relapsing fever					
	Kyasanur forest disease					
	Q fever					
	Rabies					
	Coccidioidomycosis					2
	Zika virus infection					
	Severe Fever with Thrombocytopenia Syndrome					
	Hemorrhagic fever with renal syndrome					
	Western equine encephalitis					
	Tick-borne encephalitis					
	Anthrax					
	Chikungunya fever	1			1	2
	Scrub typhus(Tsutsugamushi disease)					
	Dengue fever		1		2	60
	Eastern equine encephalitis					
	Avian influenza (excluding H5N1 and H7N9)					
	Nipah virus infection					
	Japanese spotted fever					
	Japanese encephalitis					
	Hantavirus pulmonary syndrome					
	Herpes B virus infection					
	Glanders					
	Brucellosis					
	Venezuelan equine encephalitis					
	Hendra virus infection					
Epidemic typhus						
Botulism						
Malaria					9	
Tularemia						
Lyme disease					1	
Lyssavirus infection(excluding rabies)						
Rift valley fever						
Melioidosis						
Legionellosis	14	12	10	8	210	
Leptospirosis					5	
Rocky mountain spotted fever						

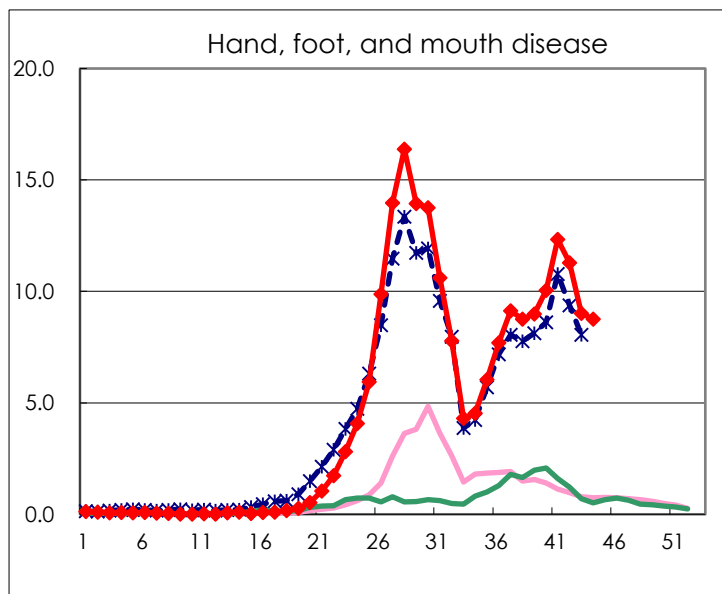
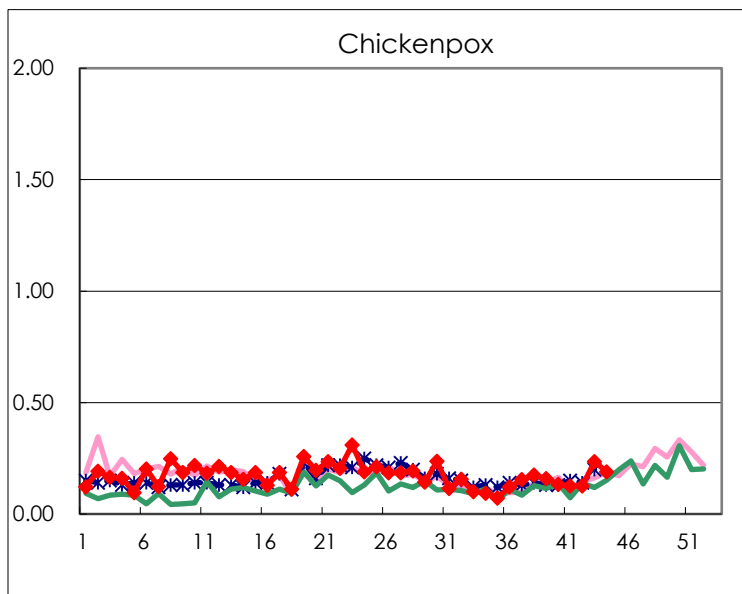
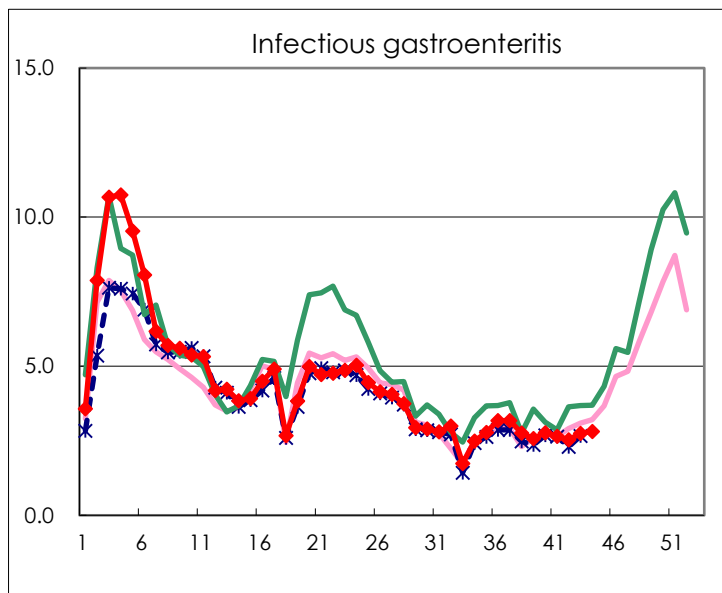
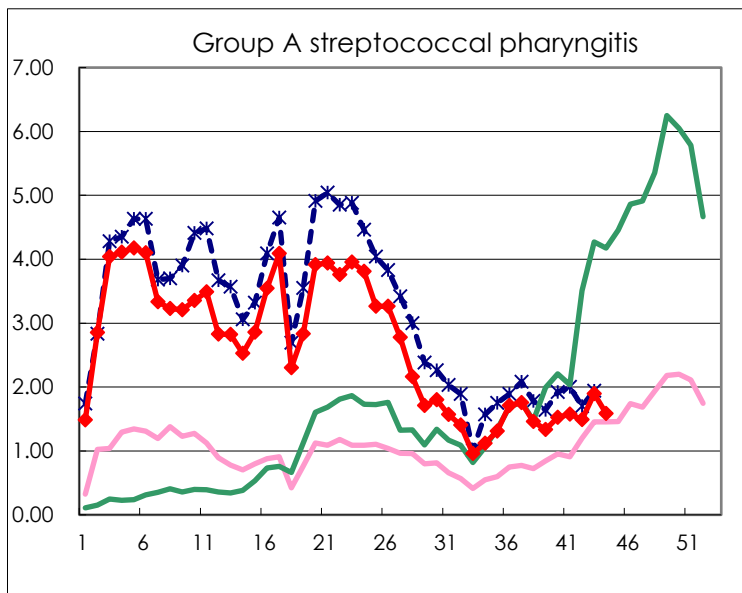
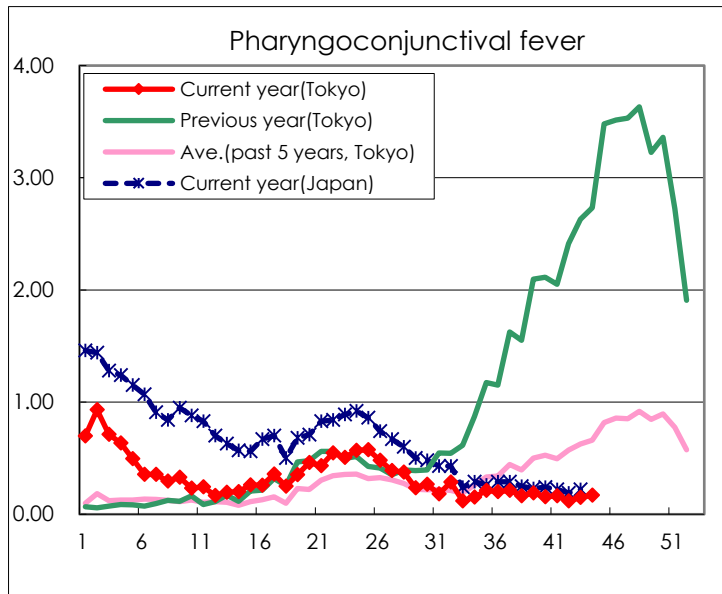
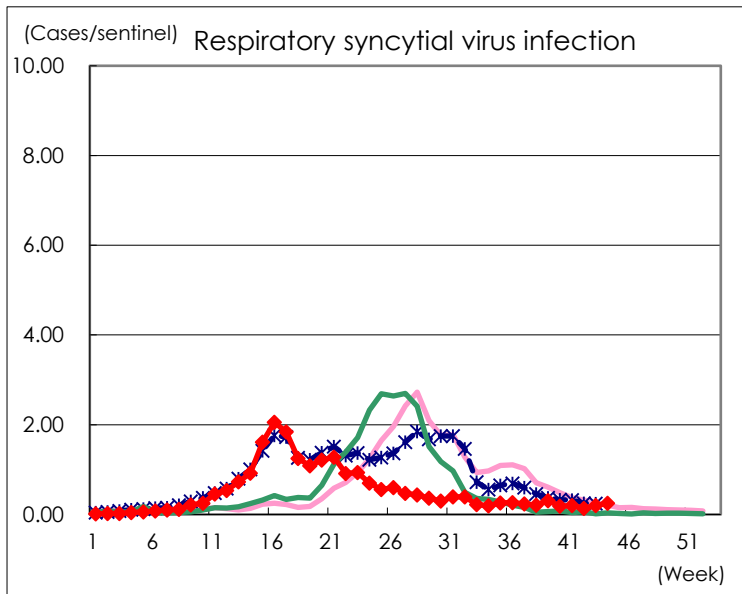
Category	Diseases	Tokyo				
		41st	42nd	43rd	44th	Cum 2024
V	Amebiasis		1	3	2	90
	Viral hepatitis(excluding hepatitis A and E)	1	1		1	35
	CRE infection	6	5	5	4	171
	Acute Flaccid Paralysis (excluding Acute poliomyelitis)					4
	Acute encephalitis(excluding JE and WNE)	1		2	1	36
	Cryptosporidiosis	1			1	13
	Creutzfeldt-Jakob disease					9
	Severe invasive streptococcal infections(TSLS)	1	6	2	2	221
	Acquired immunodeficiency syndrome (AIDS)	6	3	8	5	244
	Giardiasis	1				12
	Invasive <i>Haemophilus influenzae</i> disease	2			3	56
	Invasive meningococcal disease					10
	Invasive pneumococcal disease	3	2	4	5	217
	Varicella (limited to hospitalized case)	1		1	3	56
	Congenital rubella syndrome					
	Syphilis	79	63	77	70	3,178
	Disseminated cryptococcosis		1			19
	Tetanus				1	2
	Vancomycin-resistant <i>S. aureus</i> infection					
	Vancomycin-resistant <i>Enterococcus</i> infection	1				7
	Pertussis	22	16	9	14	260
	Rubella					1
	Measles		1			10
MDRA infection					1	

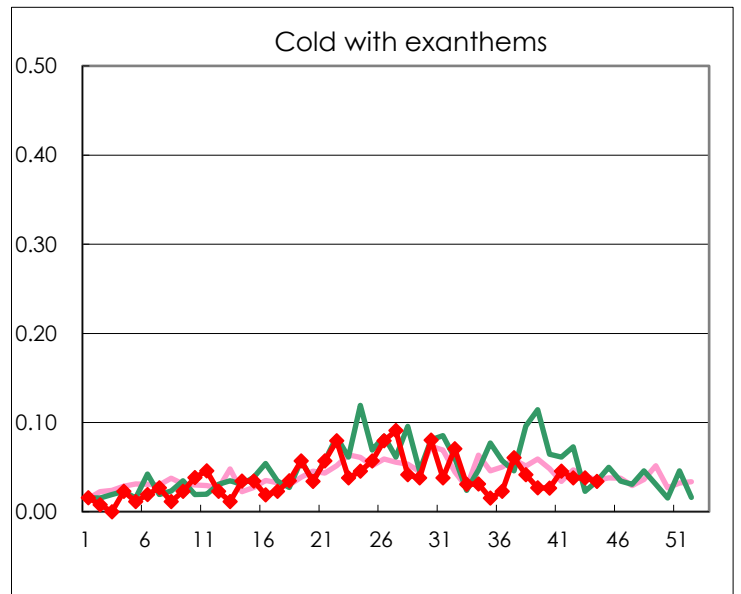
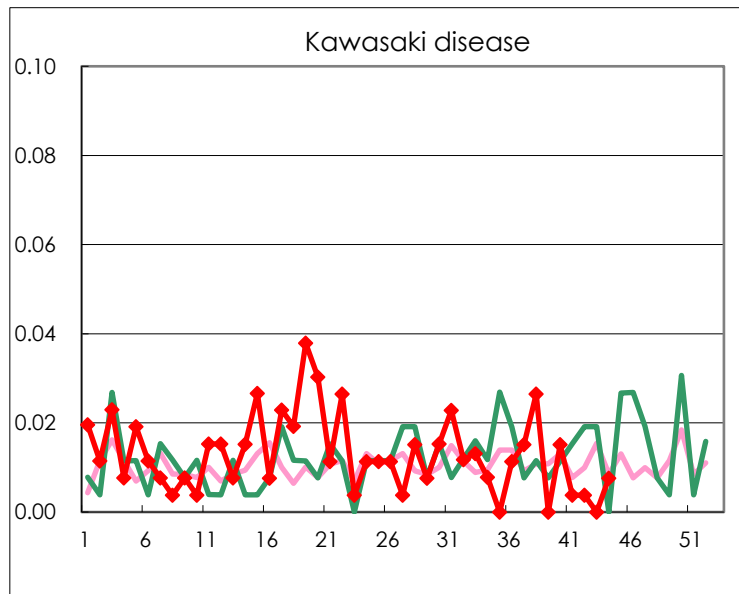
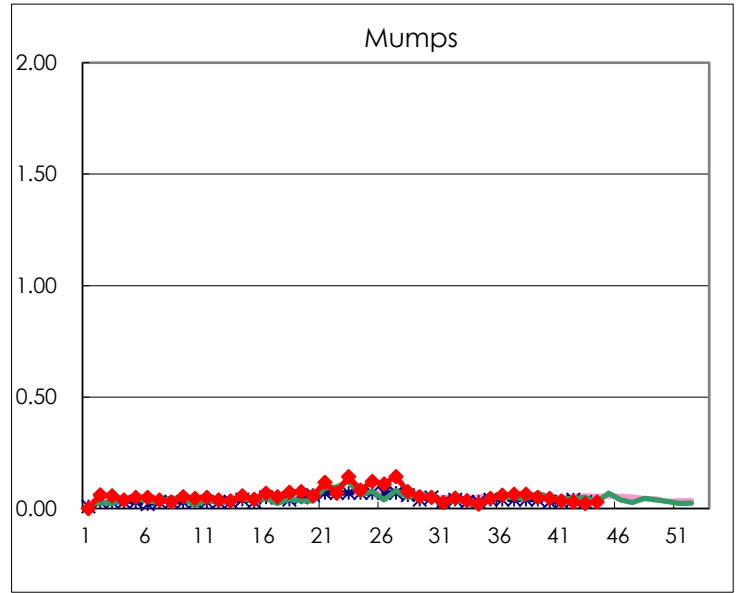
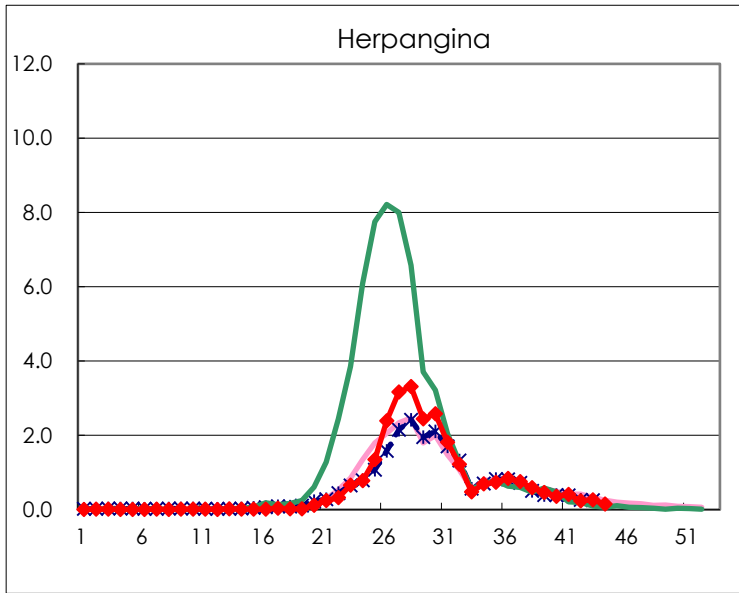
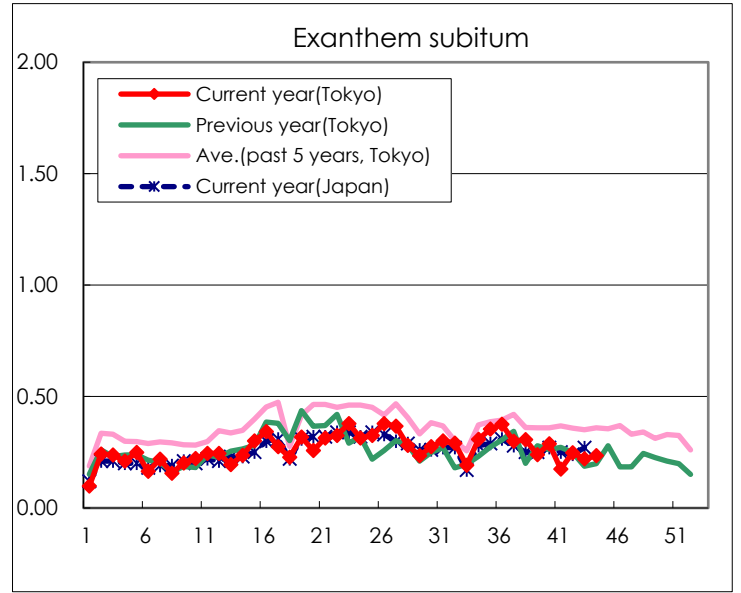
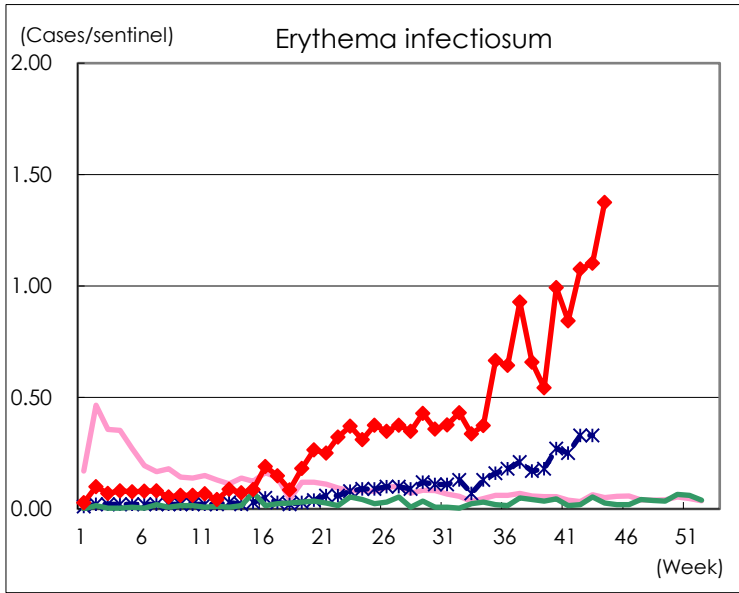
Number of patients with the diseases to be reported
by the designated clinics and hospitals

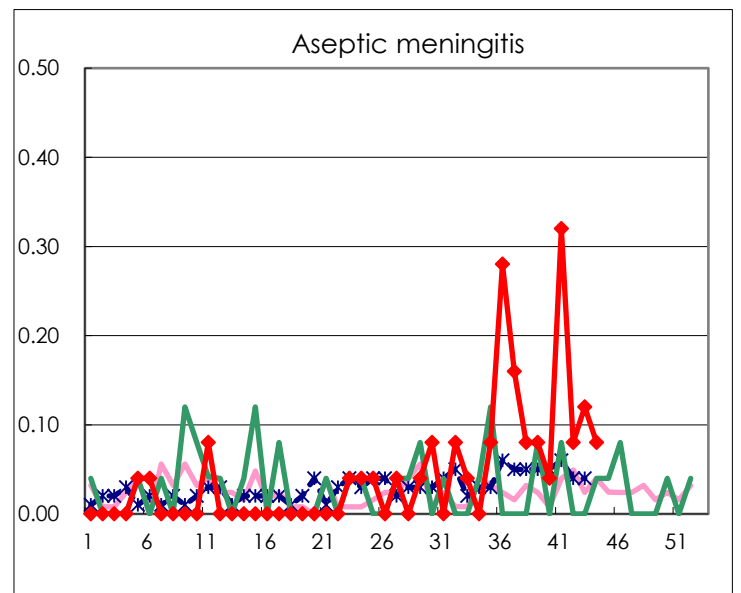
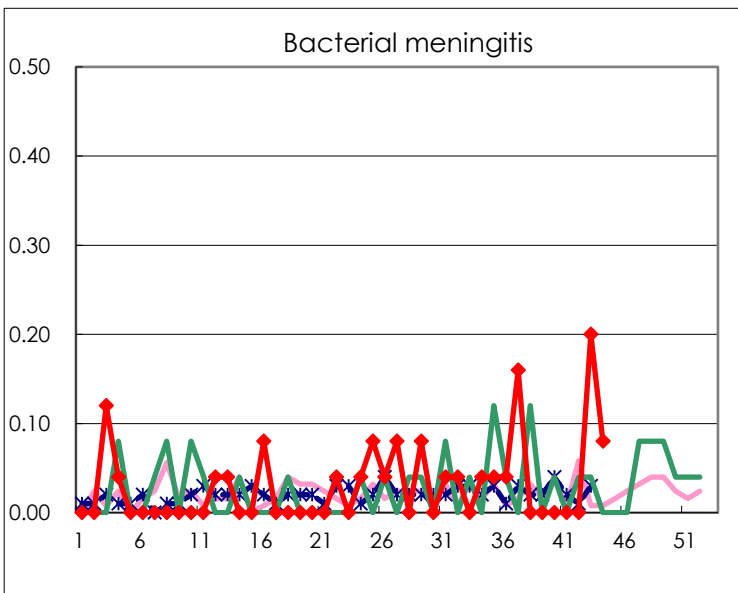
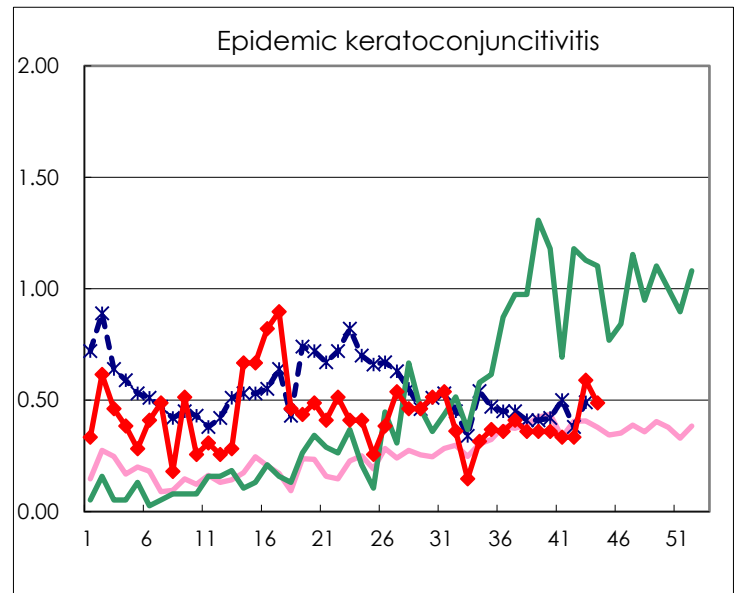
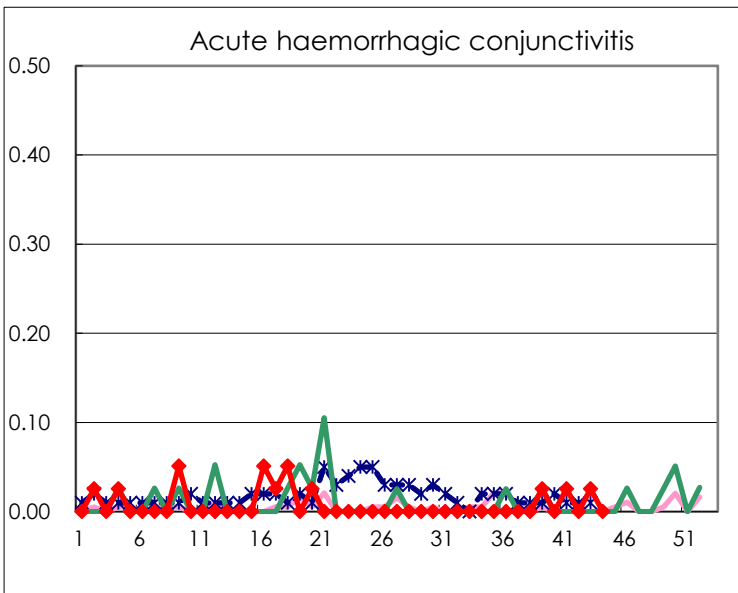
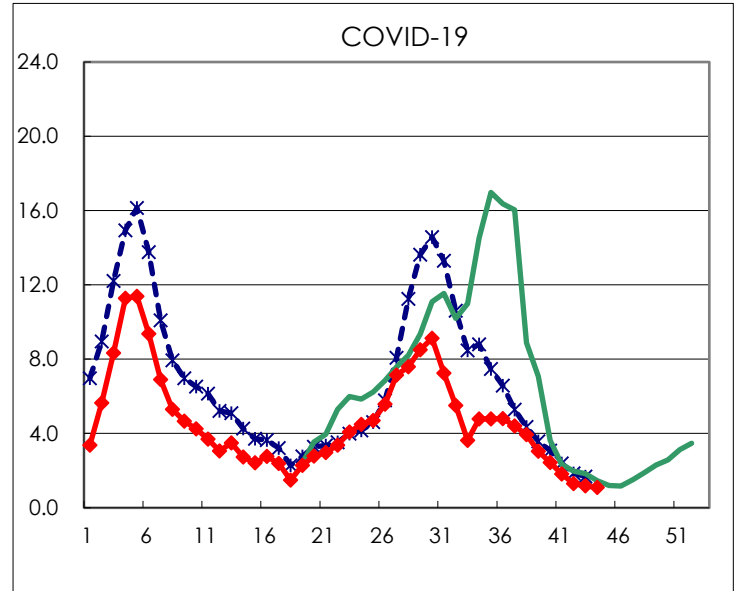
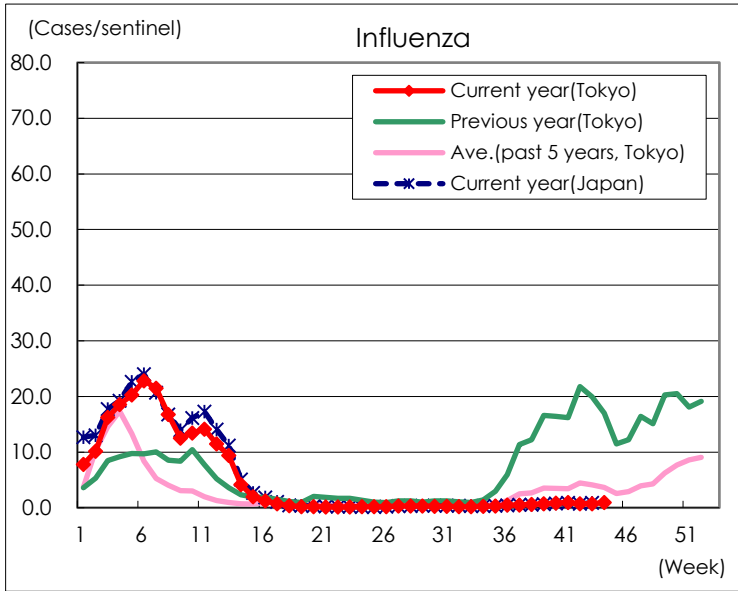
Diseases	Tokyo				
	41st	42nd	43rd	44th	/sentinel
Respiratory syncytial virus infection	53	35	52	66	0.25
Pharyngoconjunctival fever	43	31	39	45	0.17
Group A streptococcal pharyngitis	414	392	499	418	1.58
Infectious gastroenteritis	698	666	723	743	2.81
Chickenpox	33	33	62	50	0.19
Hand, foot, and mouth disease	3,243	2,967	2,373	2,311	8.75
Erythema infectiosum	222	283	290	363	1.38
Exanthem subitum	46	65	58	62	0.23
Herpangina	108	61	70	40	0.15
Mumps	9	8	6	8	0.03
Kawasaki disease	1	1		2	0.01
Cold with exanthems	12	10	10	9	0.03
Influenza	395	308	307	386	0.92
COVID-19	758	543	491	456	1.09
Acute hemorrhagic conjunctivitis	1		1		
Epidemic keratoconjunctivitis	13	13	23	19	0.49
Bacterial meningitis			5	2	0.08
Aseptic meningitis	8	2	3	2	0.08
<i>Mycoplasma pneumoniae</i>	83	112	121	107	4.28
<i>Chlamydia pneumoniae</i> (excluding <i>psittacosis</i>)	1	4		2	0.08
Infectious gastroenteritis (only by Rotavirus)					
Influenza-Associated Hospitalizations	9	1	5	13	0.52
COVID-19-Associated Hospitalizations	91	51	56	53	2.12

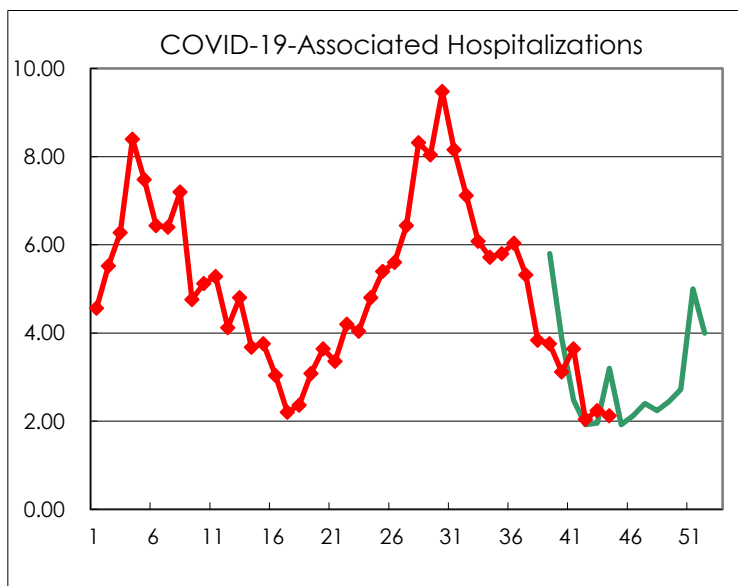
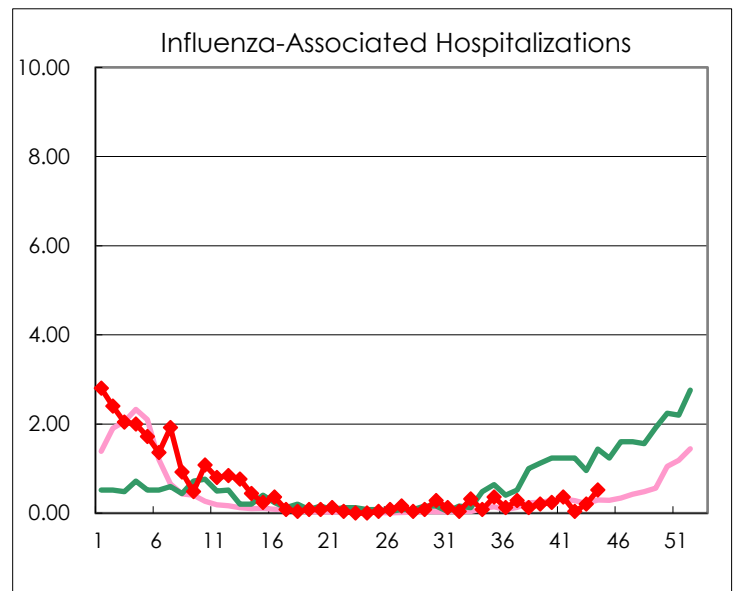
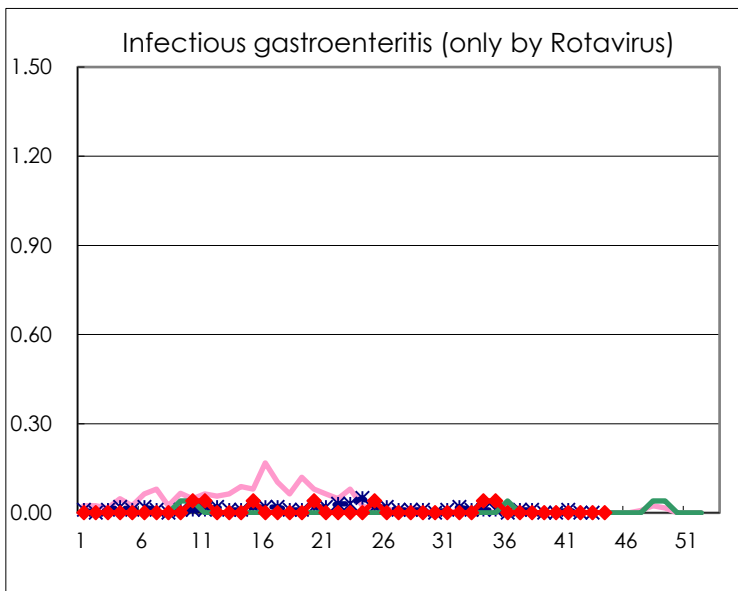
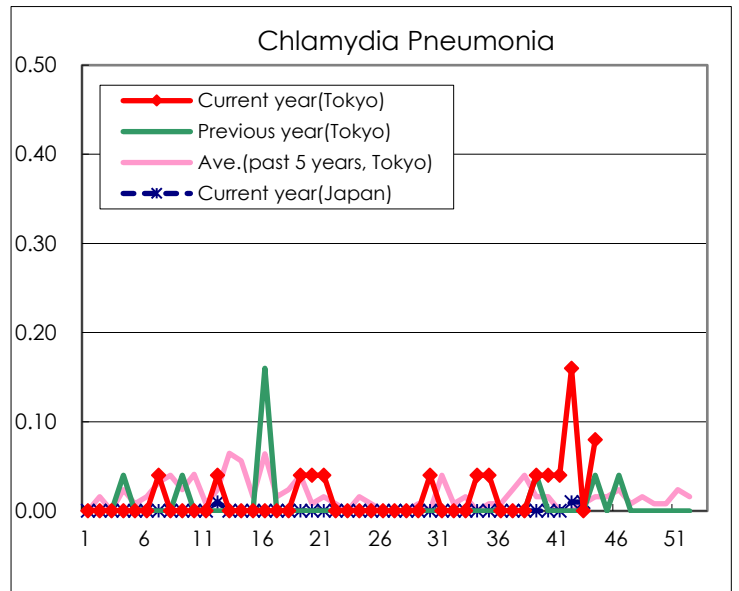
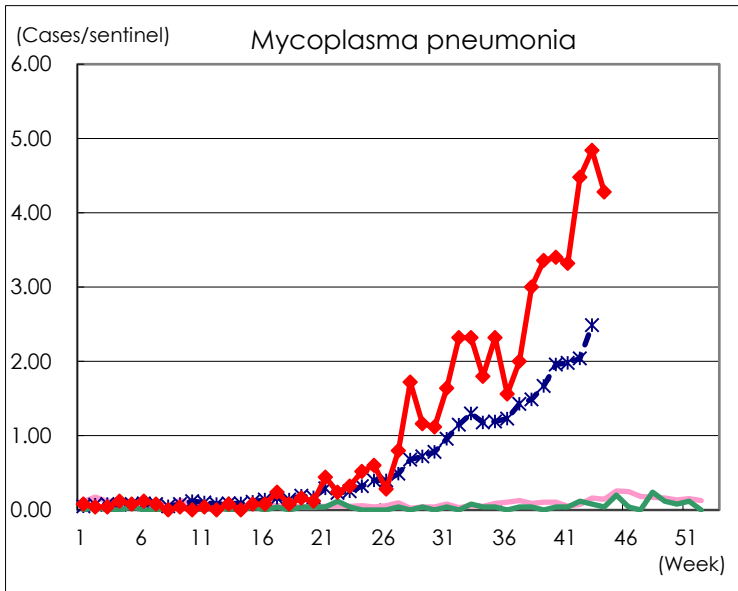
(Blank means 0.)

Disease Trend Graph (weekly reported cases per sentinel in comparison)









Number of sentinel facilities for weekly reporting		
Types of sentinels	Number of sentinels	Sentinels having reported
Pediatric	264	264
Influenza COVID-19	419	418
Ophthalmic	39	39
Specially-designated	25	25