
INFECTIOUS DISEASES WEEKLY REPORT

TOKYO IDWR

Tokyo Metropolitan Infectious Disease Surveillance Center

14 November 2024 / Number 45 (11/4 ~ 11/10)

Surveillance System in Tokyo, Japan

The infectious diseases which all physicians must report
All physicians must report to health centers the incidence of the diseases which are shown at page one. Health centers electronically report the individual cases to Tokyo Metropolitan Infectious Disease Surveillance Center.

The infectious diseases required to be reported by the sentinels
The numbers of patients who visit the sentinel clinics or hospitals during a week are reported to health centers in Tokyo. And they electronically report the numbers to Tokyo Metropolitan Infectious Disease Surveillance Center. We have about 500 sentinel clinics and hospitals in Tokyo.

Tokyo Metropolitan Institute of Public Health

TEL:81-3-3363-3213 FAX:81-3-5332-7365

e-mail:tmiph@section.metro.tokyo.jp

URL:idsc.tmiph.metro.tokyo.lg.jp/

Number of patients with the diseases which all physicians must report

Category	Diseases	Tokyo				
		42nd	43rd	44th	45th	Cum 2024
I	Ebola hemorrhagic fever					
	Crimean-Congo hemorrhagic fever					
	Smallpox					
	South American hemorrhagic fever					
	Plague					
	Marburg disease					
	Lassa fever					
II	Acute poliomyelitis					
	Tuberculosis	27	40	49	33	1,818
	Diphtheria					
	Severe Acute Respiratory Syndrome(SARS)					
	Middle East Respiratory Syndrome (MERS)					
	Avian influenza H5N1					
	Avian influenza H7N9					
III	Cholera					2
	Shigellosis		1			23
	Enterohemorrhagic Escherichia coli infection	18	19	10	6	422
	Typhoid fever				1	6
	Paratyphoid fever				1	3
IV	Hepatitis E	3	2	5	2	126
	West Nile fever					
	Hepatitis A					18
	Echinococcosis					1
	Mpox					14
	Yellow fever					
	Psittacosis					
	Omsk hemorrhagic fever					
	Relapsing fever					
	Kyasanur forest disease					
	Q fever					
	Rabies					
	Coccidioidomycosis					2
	Zika virus infection					
	Severe Fever with Thrombocytopenia Syndrome					
	Hemorrhagic fever with renal syndrome					
	Western equine encephalitis					
	Tick-borne encephalitis					
	Anthrax					
	Chikungunya fever			1		2
	Scrub typhus(Tsutsugamushi disease)				2	2
	Dengue fever	1		2	3	63
	Eastern equine encephalitis					
	Avian influenza (excluding H5N1 and H7N9)					
	Nipah virus infection					
	Japanese spotted fever					
	Japanese encephalitis					
	Hantavirus pulmonary syndrome					
	Herpes B virus infection					
	Glanders					
	Brucellosis					
	Venezuelan equine encephalitis					
	Hendra virus infection					
	Epidemic typhus					
	Botulism					
	Malaria				1	10
Tularemia						
Lyme disease					1	
Lyssavirus infection(excluding rabies)						
Rift valley fever						
Melioidosis						
Legionellosis	12	10	8	14	224	
Leptospirosis					5	
Rocky mountain spotted fever						

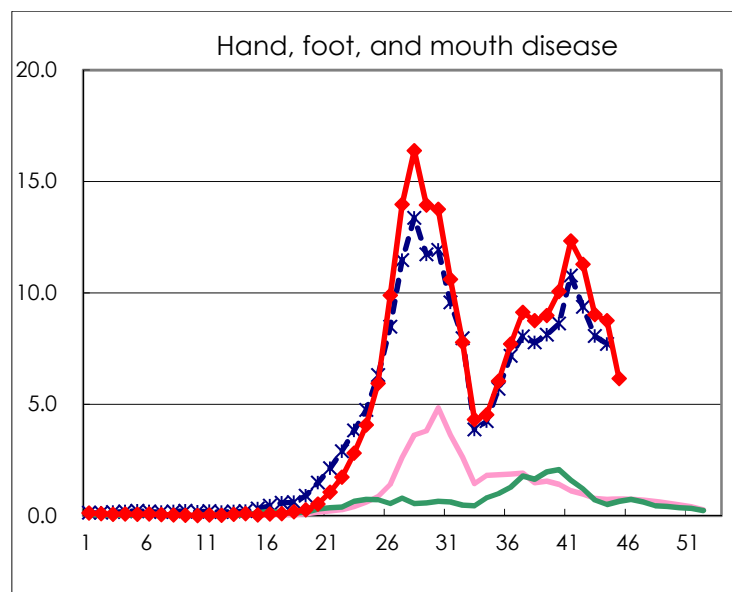
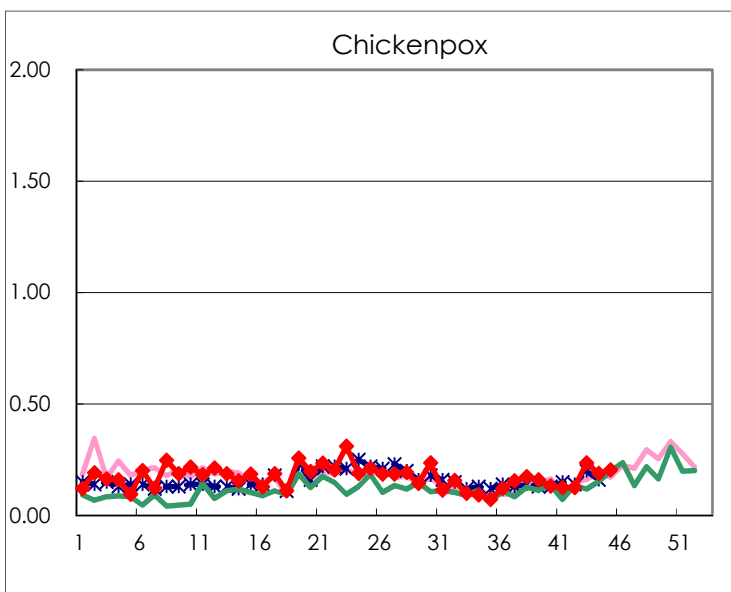
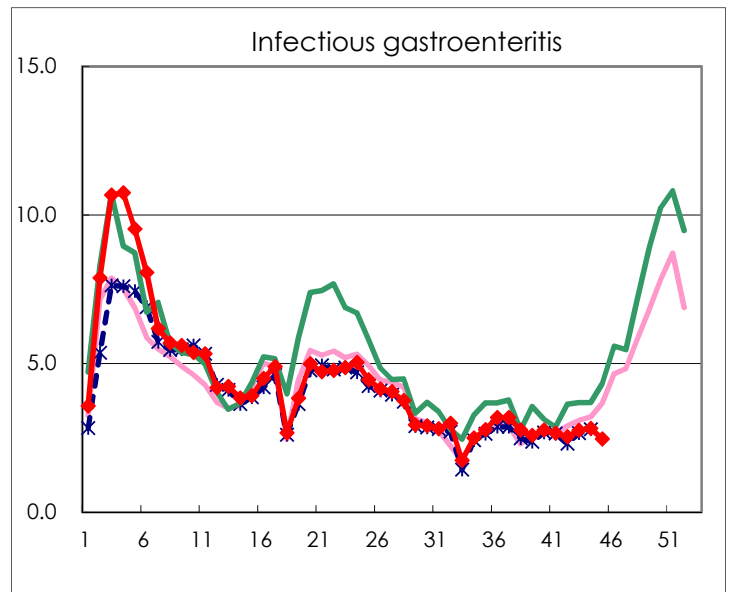
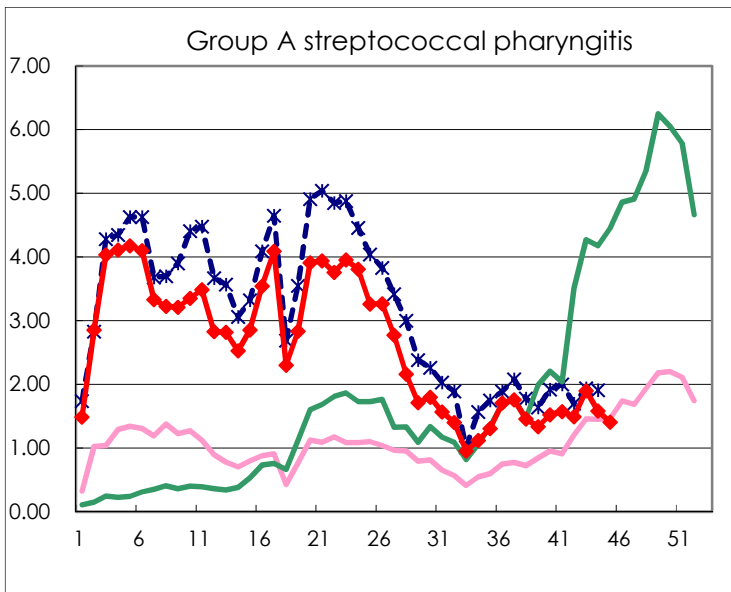
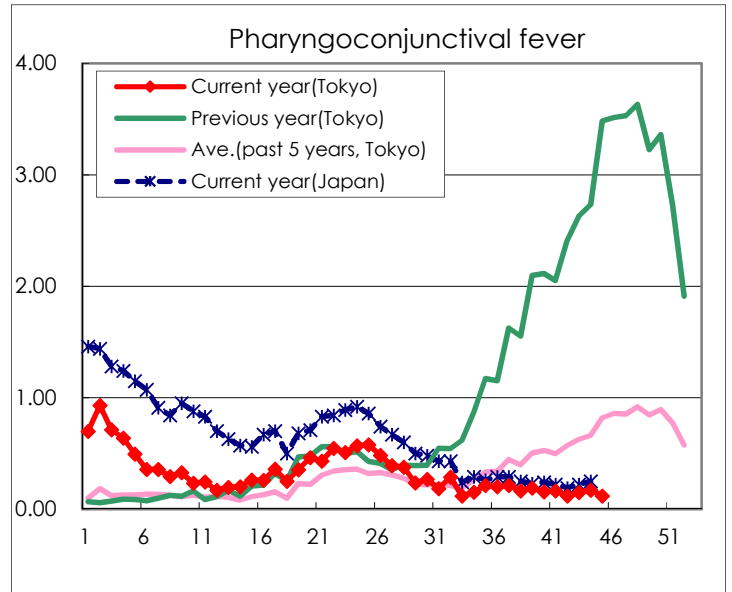
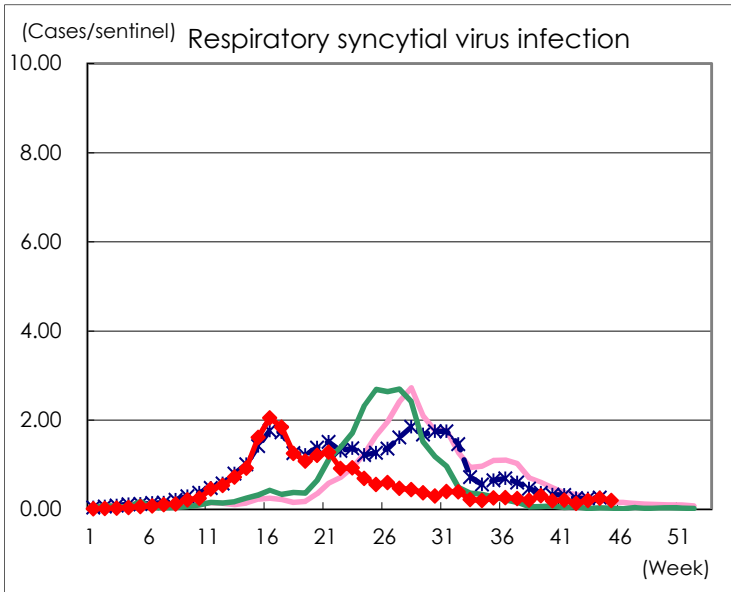
Category	Diseases	Tokyo				
		42nd	43rd	44th	45th	Cum 2024
V	Amebiasis	1	3	2	2	92
	Viral hepatitis(excluding hepatitis A and E)	1		1	1	36
	CRE infection	5	5	4	1	172
	Acute Flaccid Paralysis (excluding Acute poliomyelitis)					4
	Acute encephalitis(excluding JE and WNE)		2	1	2	38
	Cryptosporidiosis			1	1	14
	Creutzfeldt-Jakob disease					9
	Severe invasive streptococcal infections(TSLS)	6	2	2	1	222
	Acquired immunodeficiency syndrome (AIDS)	3	8	6	4	249
	Giardiasis				1	13
	Invasive <i>Haemophilus influenzae</i> disease			3	2	58
	Invasive meningococcal disease					10
	Invasive pneumococcal disease	2	4	6	3	221
	Varicella (limited to hospitalized case)		1	3	1	56
	Congenital rubella syndrome					
	Syphilis	63	78	82	73	3,265
	Disseminated cryptococcosis	1				19
	Tetanus			1		2
	Vancomycin-resistant <i>S. aureus</i> infection					
	Vancomycin-resistant Enterococcus infection					7
Pertussis	16	9	15	15	276	
Rubella					1	
Measles	1				10	
MDRA infection					1	

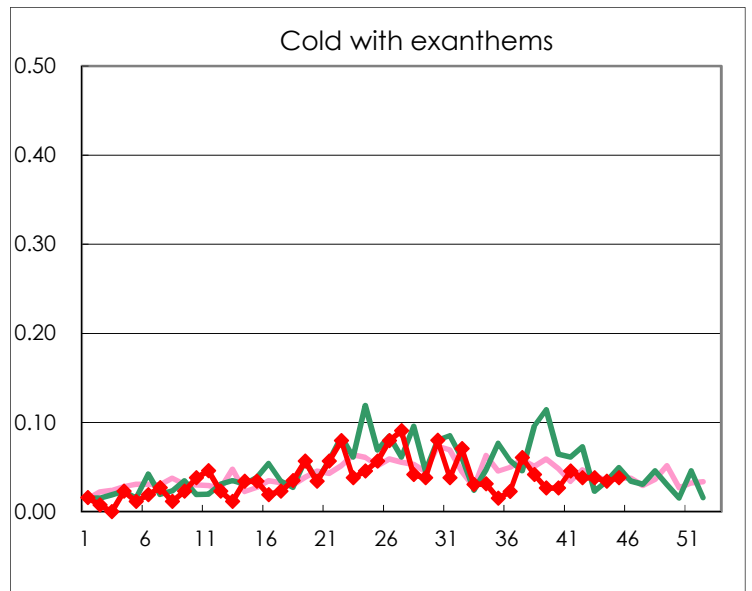
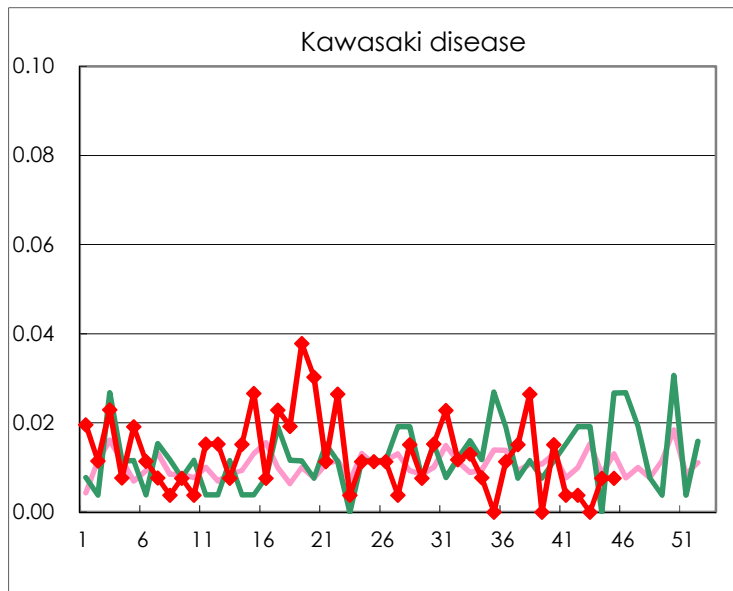
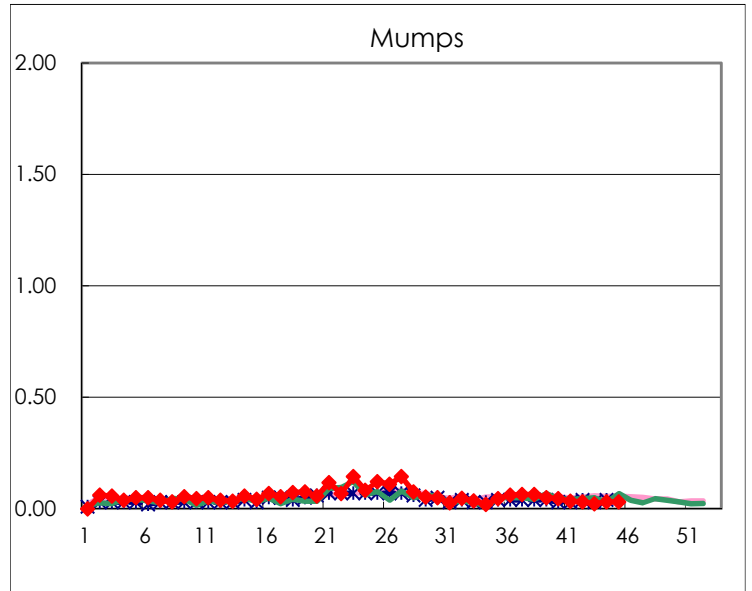
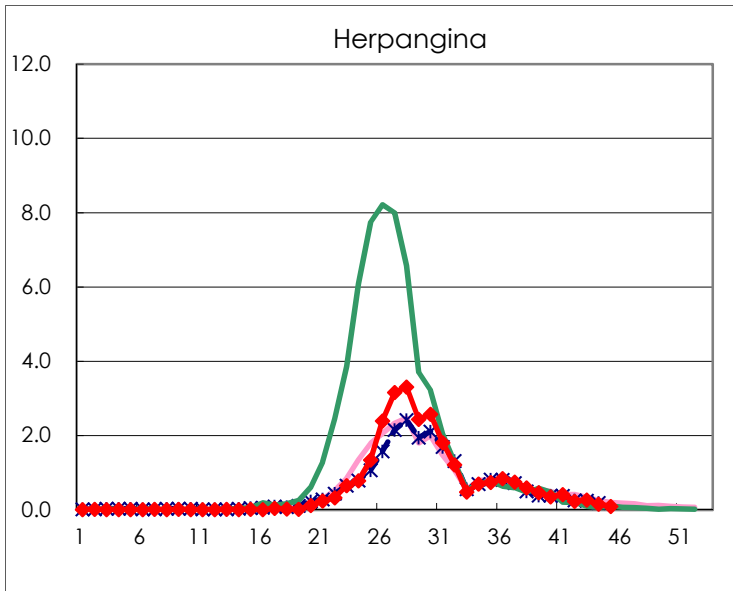
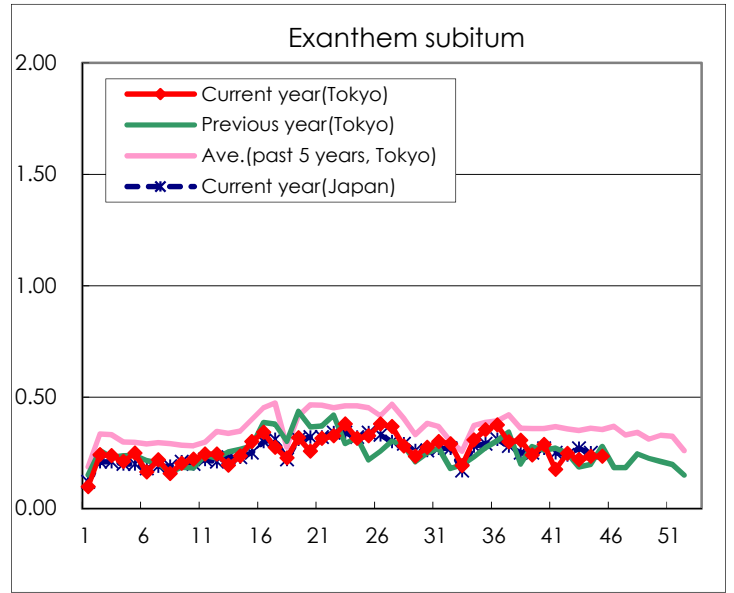
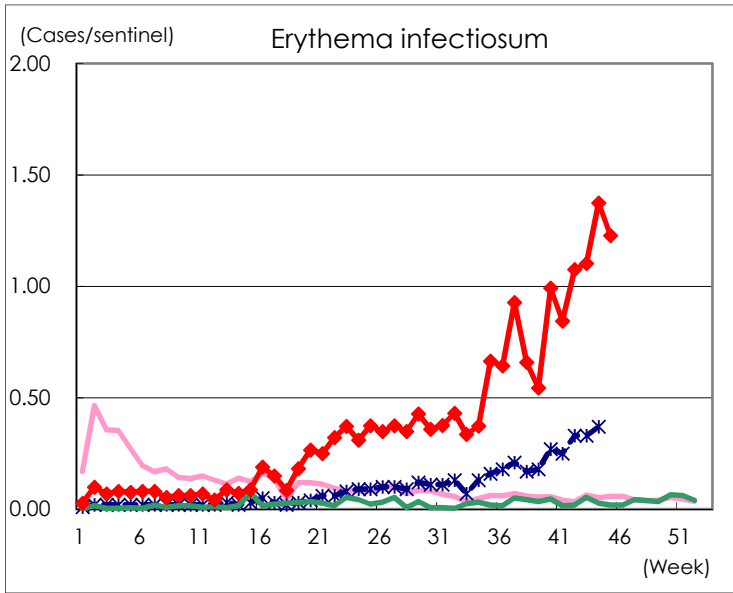
Number of patients with the diseases to be reported
by the designated clinics and hospitals

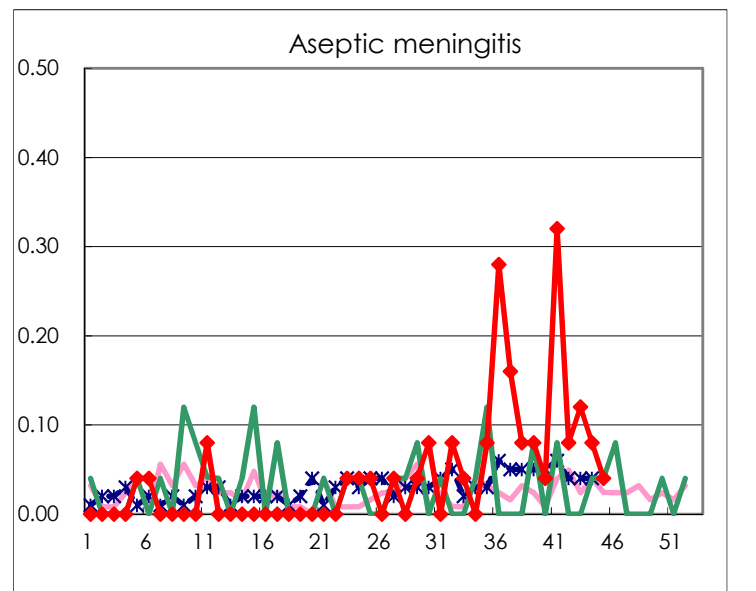
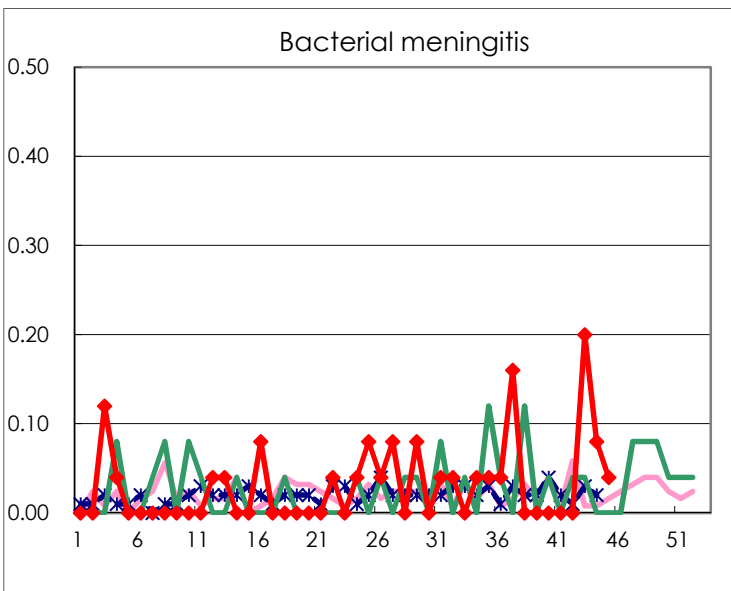
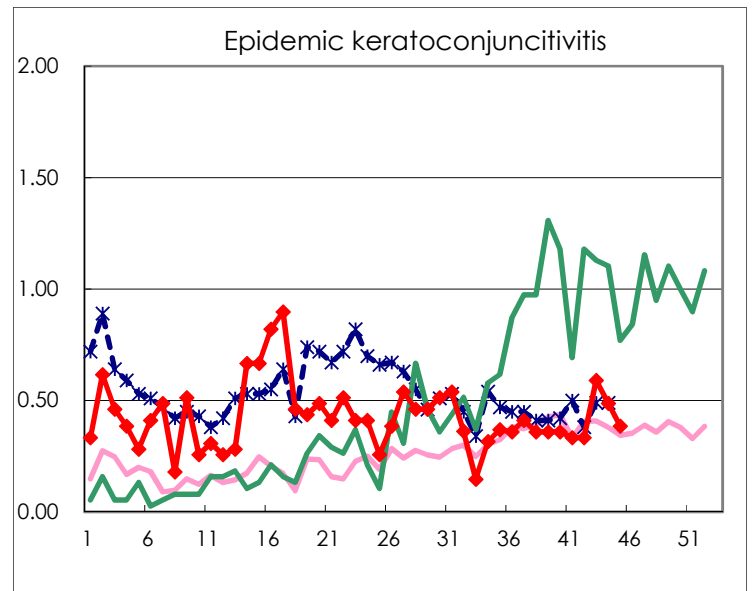
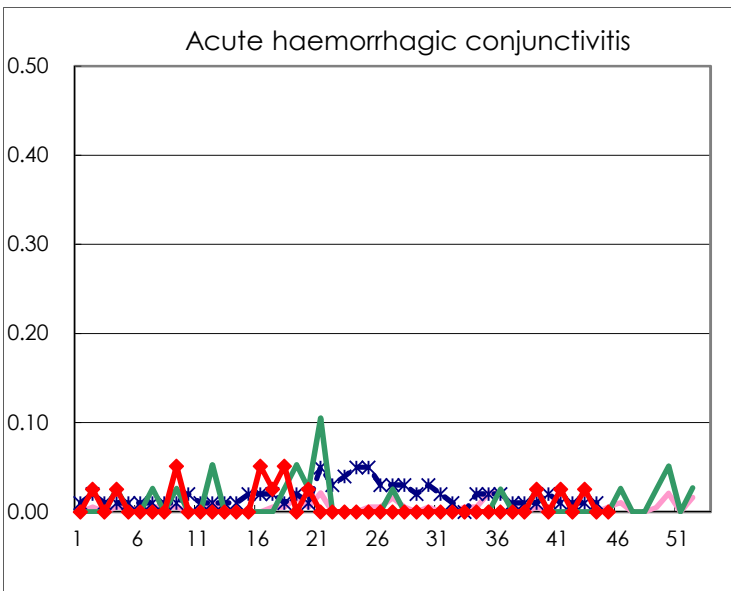
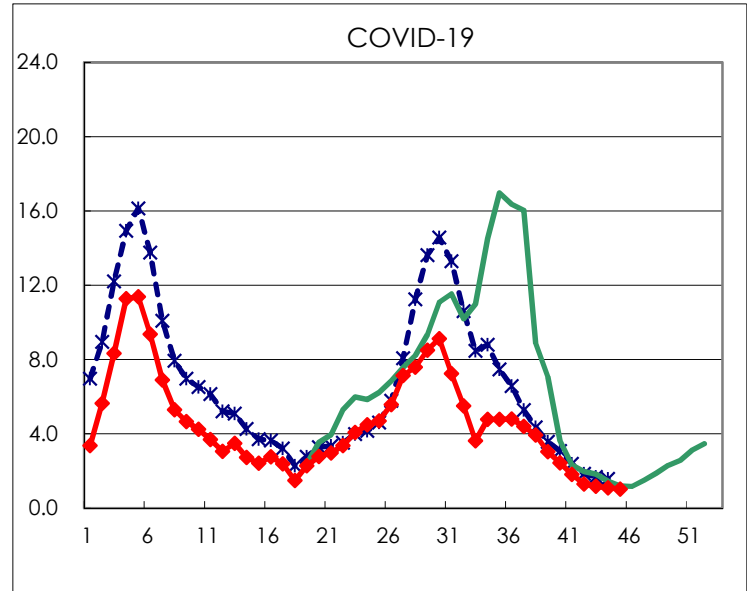
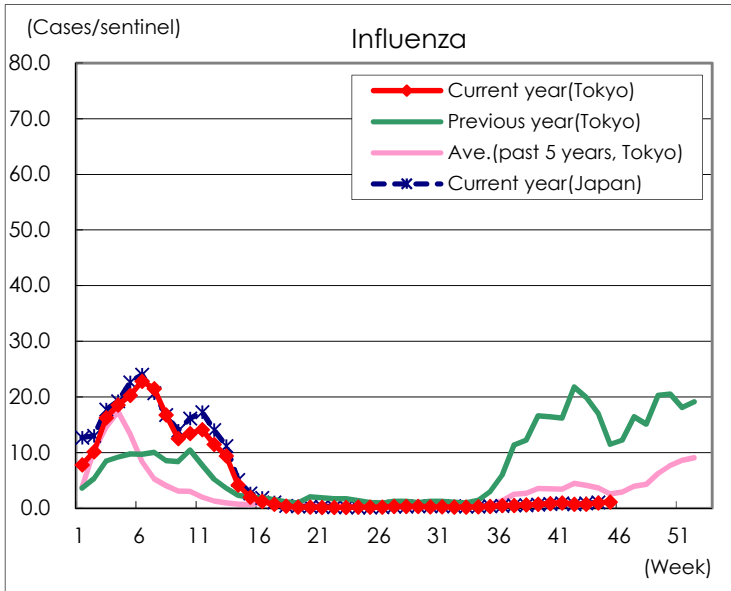
Diseases	Tokyo				
	42nd	43rd	44th	45th	/sentinel
Respiratory syncytial virus infection	35	52	66	52	0.20
Pharyngoconjunctival fever	31	39	45	31	0.12
Group A streptococcal pharyngitis	392	499	418	371	1.41
Infectious gastroenteritis	666	723	743	650	2.46
Chickenpox	33	62	50	54	0.20
Hand, foot, and mouth disease	2,967	2,373	2,311	1,626	6.16
Erythema infectiosum	283	290	363	324	1.23
Exanthem subitum	65	58	62	62	0.23
Herpangina	61	70	40	24	0.09
Mumps	8	6	8	8	0.03
Kawasaki disease	1		2	2	0.01
Cold with exanthems	10	10	9	10	0.04
Influenza	308	307	387	468	1.12
COVID-19	543	491	456	432	1.03
Acute hemorrhagic conjunctivitis		1			
Epidemic keratoconjunctivitis	13	23	19	15	0.38
Bacterial meningitis		5	2	1	0.04
Aseptic meningitis	2	3	2	1	0.04
Mycoplasma pneumonia	112	121	107	99	3.96
Chlamydial pneumonia (excluding psittacosis)	4		2	1	0.04
Infectious gastroenteritis (only by Rotavirus)					
Influenza-Associated Hospitalizations	1	5	13	4	0.16
COVID-19-Associated Hospitalizations	51	56	53	69	2.76

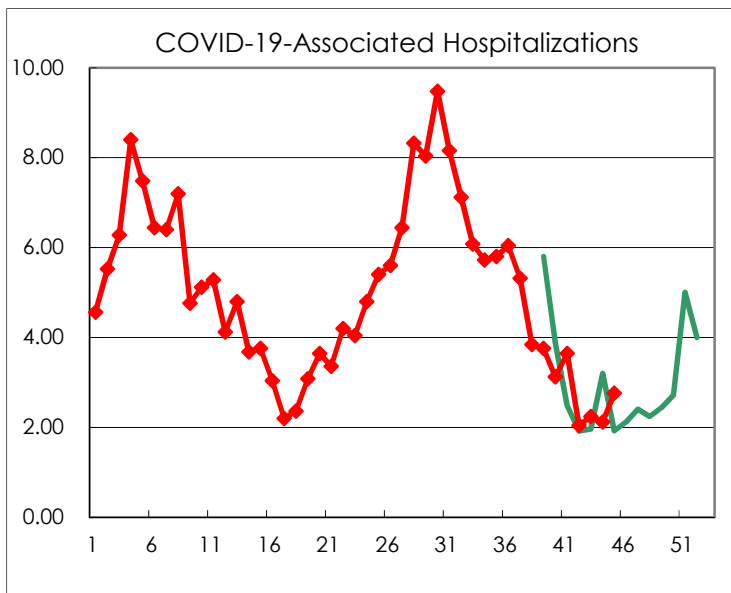
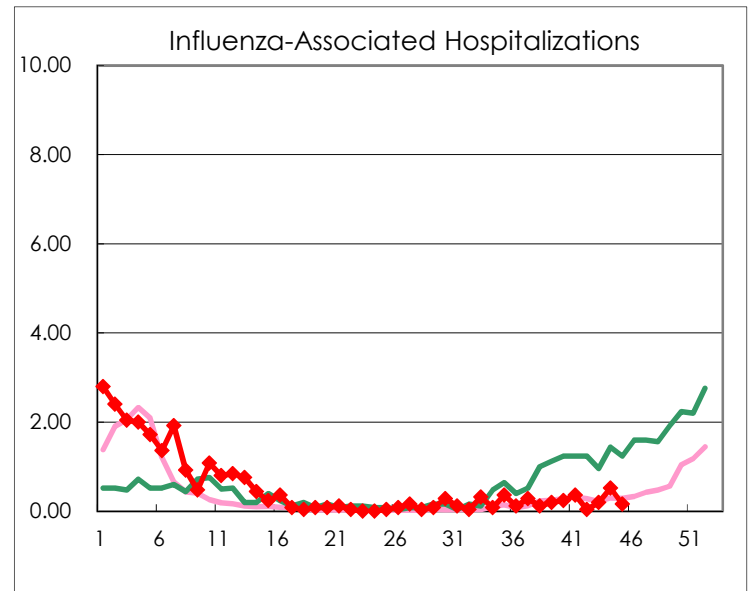
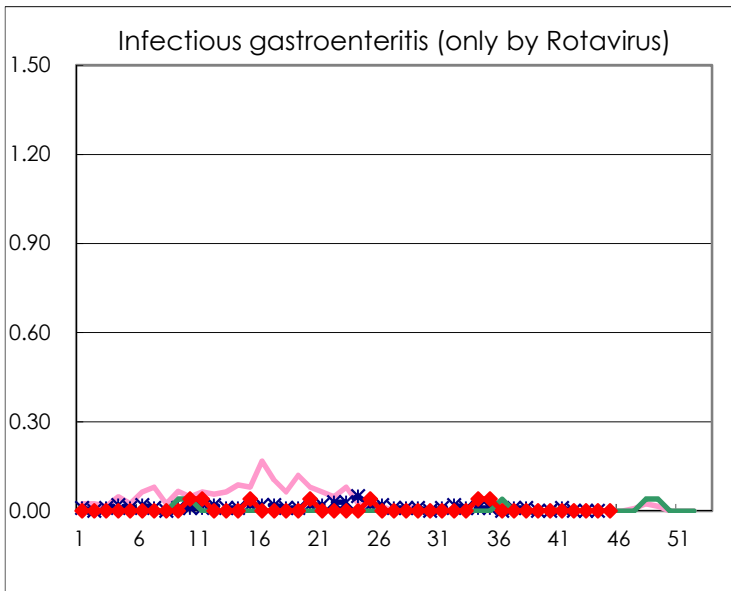
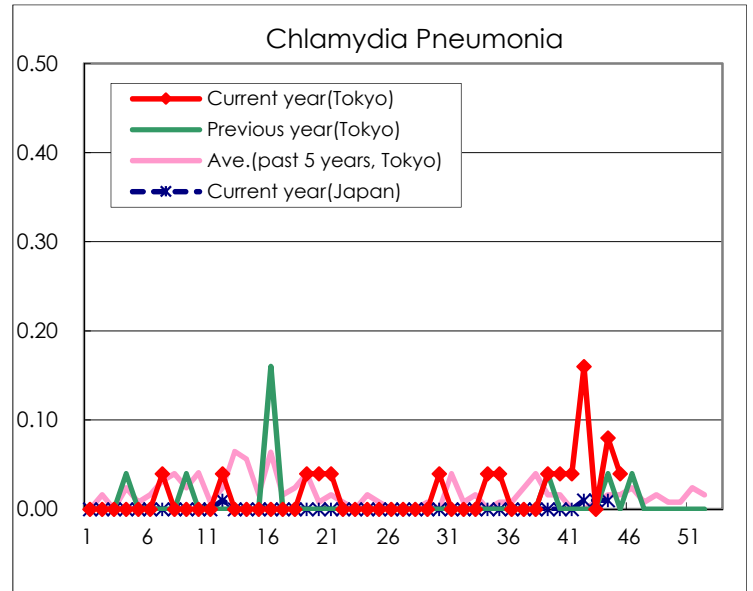
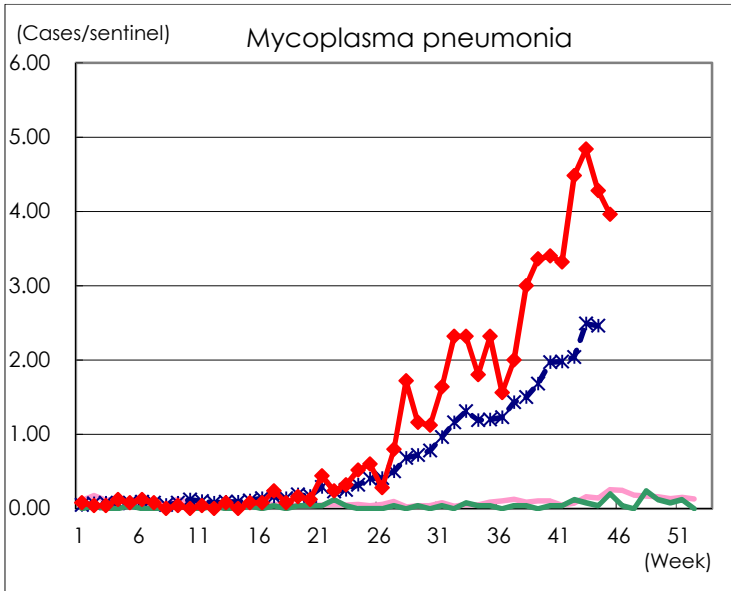
(Blank means 0.)

Disease Trend Graph (weekly reported cases per sentinel in comparison)









Number of sentinel facilities for weekly reporting		
Types of sentinels	Number of sentinels	Sentinels having reported
Pediatric	264	264
Influenza COVID-19	419	418
Ophthalmic	39	39
Specially-designated	25	25