
INFECTIOUS DISEASES WEEKLY REPORT

TOKYO iDWR

Tokyo Metropolitan Infectious Disease Surveillance Center

5 December 2024 / Number 48
(11/25 ~ 12/1)

Surveillance System in Tokyo, Japan

The infectious diseases which all physicians must report
All physicians must report to health centers the incidence of the diseases which are shown at page one. Health centers electronically report the individual cases to Tokyo Metropolitan Infectious Disease Surveillance Center.

The infectious diseases required to be reported by the sentinels
The numbers of patients who visit the sentinel clinics or hospitals during a week are reported to health centers in Tokyo. And they electronically report the numbers to Tokyo Metropolitan Infectious Disease Surveillance Center. We have about 500 sentinel clinics and hospitals in Tokyo.

Tokyo Metropolitan Institute of Public Health

TEL:81-3-3363-3213 FAX:81-3-5332-7365

e-mail:tmiph@section.metro.tokyo.jp

URL:idsc.tmiph.metro.tokyo.lg.jp/

Number of patients with the diseases which all physicians must report

Category	Diseases	Tokyo				
		45th	46th	47th	48th	Cum 2024
I	Ebola hemorrhagic fever					
	Crimean-Congo hemorrhagic fever					
	Smallpox					
	South American hemorrhagic fever					
	Plague					
	Marburg disease					
	Lassa fever					
II	Acute poliomyelitis					
	Tuberculosis	36	62	36	56	1,974
	Diphtheria					
	Severe Acute Respiratory Syndrome(SARS)					
	Middle East Respiratory Syndrome (MERS)					
	Avian influenza H5N1					
	Avian influenza H7N9					
III	Cholera					2
	Shigellosis					23
	Enterohemorrhagic Escherichia coli infection	6	12	11	6	451
	Typhoid fever	1				6
	Paratyphoid fever	1				3
IV	Hepatitis E	2	2		1	129
	West Nile fever					
	Hepatitis A			1		19
	Echinococcosis					1
	Mpox					14
	Yellow fever					
	Psittacosis					
	Omsk hemorrhagic fever					
	Relapsing fever					
	Kyasanur forest disease					
	Q fever					
	Rabies					
	Coccidioidomycosis					2
	Zika virus infection					
	Severe Fever with Thrombocytopenia Syndrome					
	Hemorrhagic fever with renal syndrome					
	Western equine encephalitis					
	Tick-borne encephalitis					
	Anthrax					
	Chikungunya fever		1	1	1	5
	Scrub typhus(Tsutsugamushi disease)	2				2
	Dengue fever	3				63
	Eastern equine encephalitis					
	Avian influenza (excluding H5N1 and H7N9)					
	Nipah virus infection					
	Japanese spotted fever					
	Japanese encephalitis				1	1
	Hantavirus pulmonary syndrome					
	Herpes B virus infection					
	Glanders					
	Brucellosis					
	Venezuelan equine encephalitis					
	Hendra virus infection					
	Epidemic typhus					
	Botulism					
	Malaria	1				10
	Tularemia					
	Lyme disease					1
	Lyssavirus infection(excluding rabies)					
	Rift valley fever					
Melioidosis						
Legionellosis	14	7	9	5	246	
Leptospirosis					5	
Rocky mountain spotted fever						

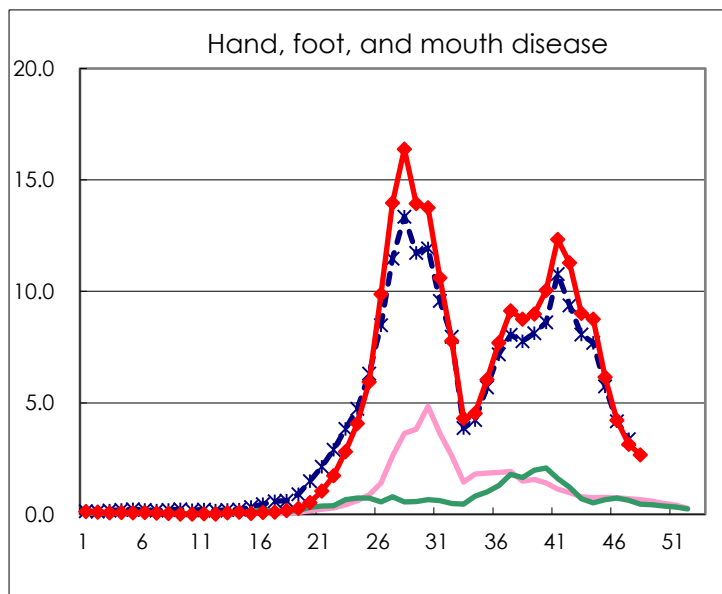
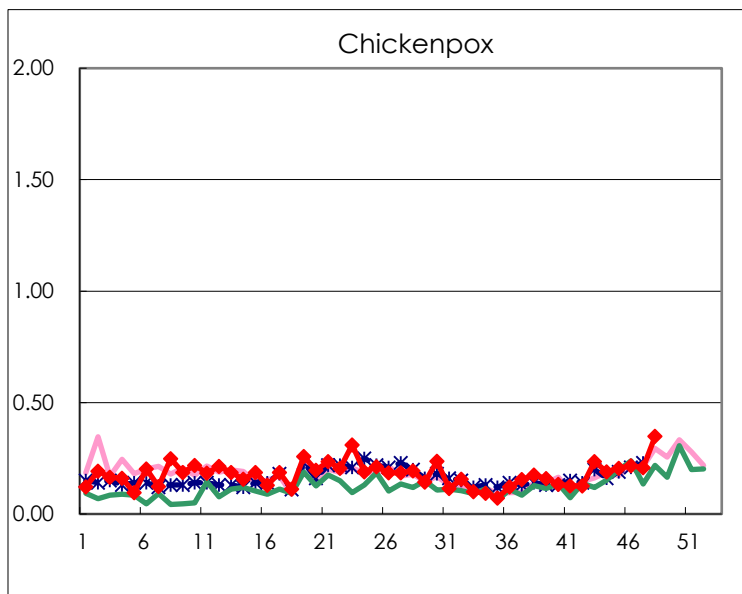
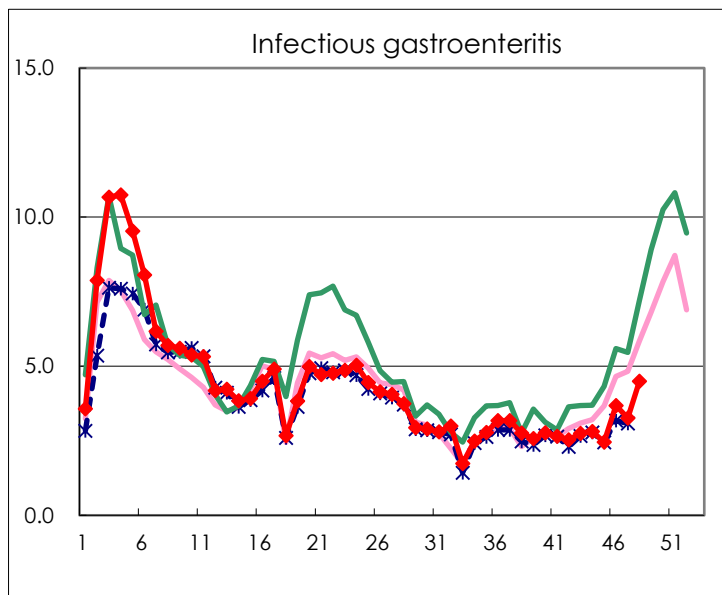
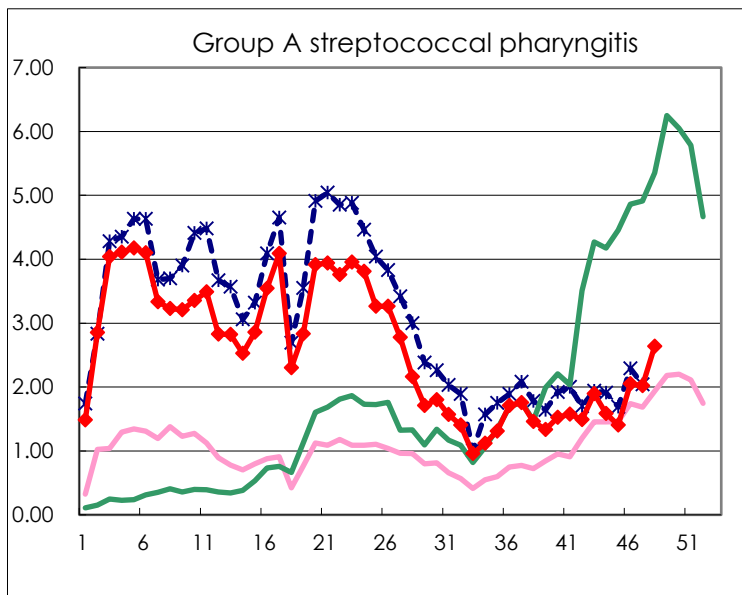
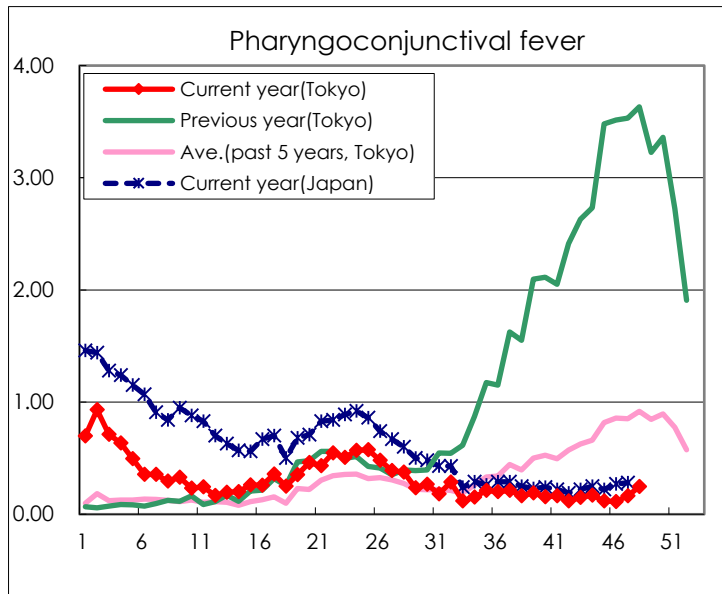
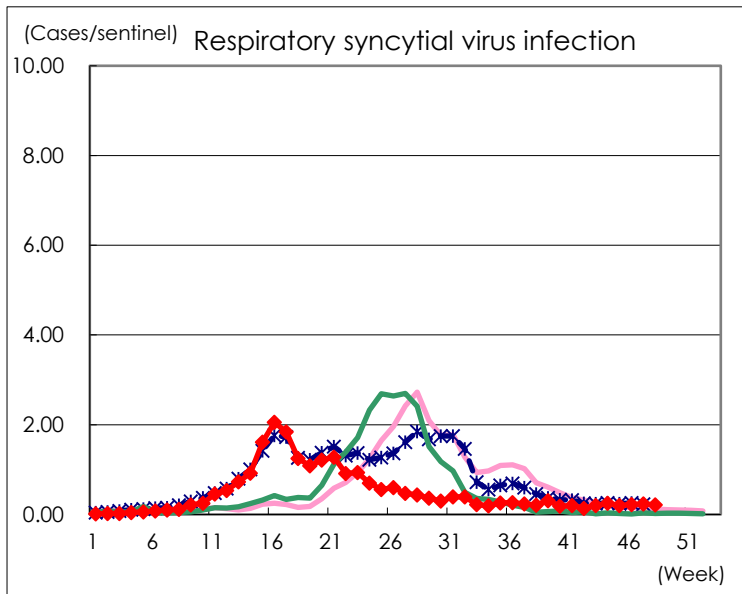
Category	Diseases	Tokyo				
		45th	46th	47th	48th	Cum 2024
V	Amebiasis	2	1	1		94
	Viral hepatitis(excluding hepatitis A and E)	1	1			37
	CRE infection	1	3	5	5	185
	Acute Flaccid Paralysis (excluding Acute poliomyelitis)				1	5
	Acute encephalitis(excluding JE and WNE)	2		3	1	42
	Cryptosporidiosis	1				14
	Creutzfeldt-Jakob disease					9
	Severe invasive streptococcal infections(TSLS)	1	2	2	2	228
	Acquired immunodeficiency syndrome (AIDS)	4	4	6	8	268
	Giardiasis	1		1		14
	Invasive <i>Haemophilus influenzae</i> disease	3		2	4	65
	Invasive meningococcal disease					10
	Invasive pneumococcal disease	3	4	6	8	239
	Varicella (limited to hospitalized case)	1	2		4	62
	Congenital rubella syndrome					
	Syphilis	77	71	68	62	3,476
	Disseminated cryptococcosis					19
	Tetanus					2
	Vancomycin-resistant <i>S. aureus</i> infection					
	Vancomycin-resistant <i>Enterococcus</i> infection					7
	Pertussis	15	13	21	17	327
	Rubella					1
Measles					10	
MDRA infection					1	

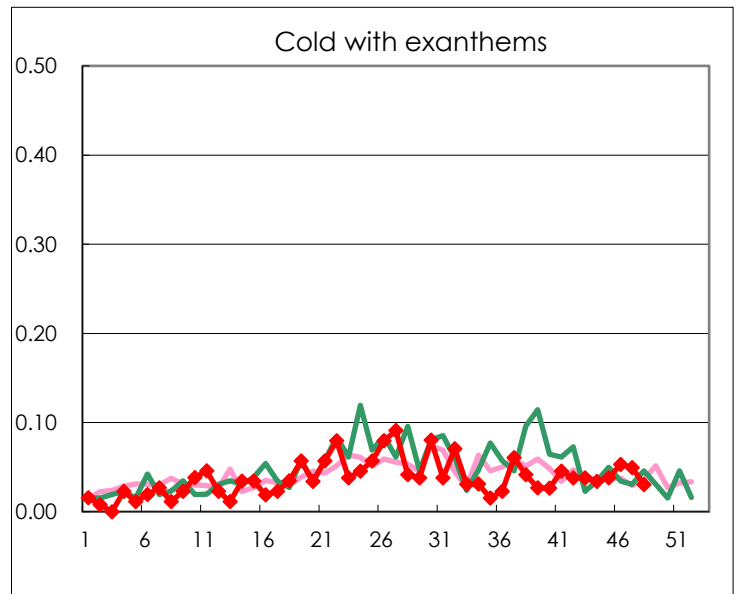
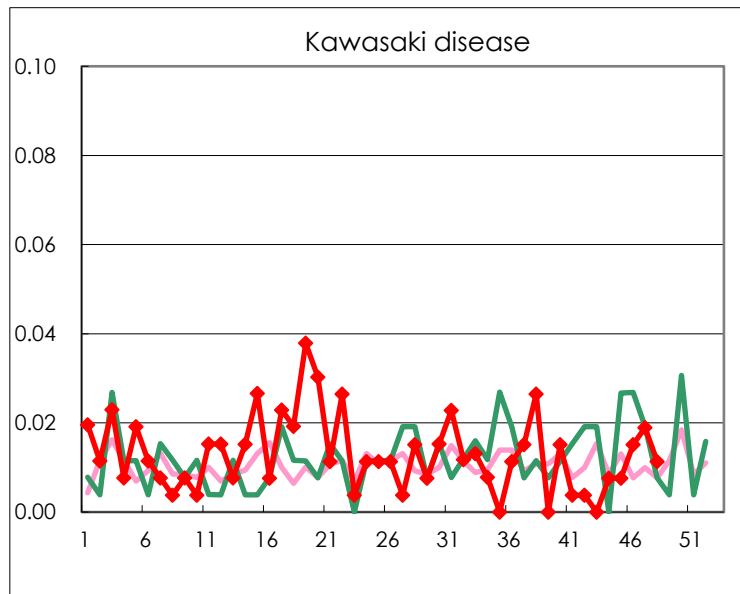
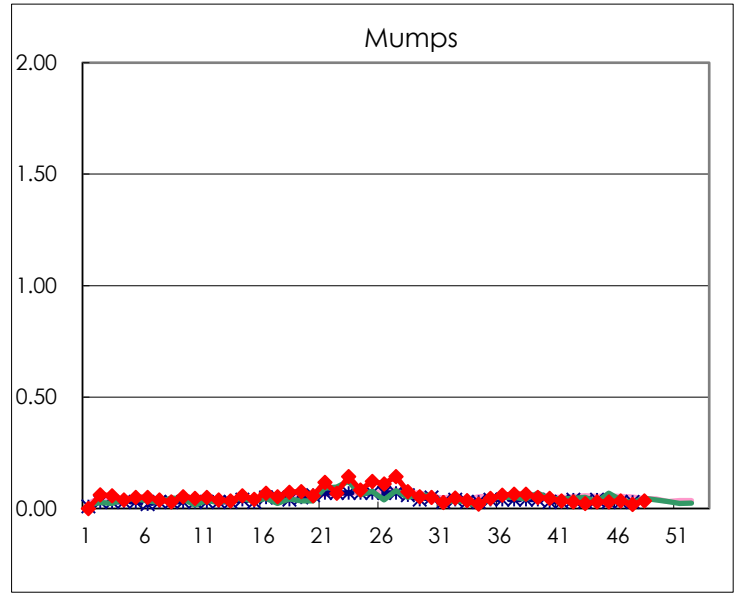
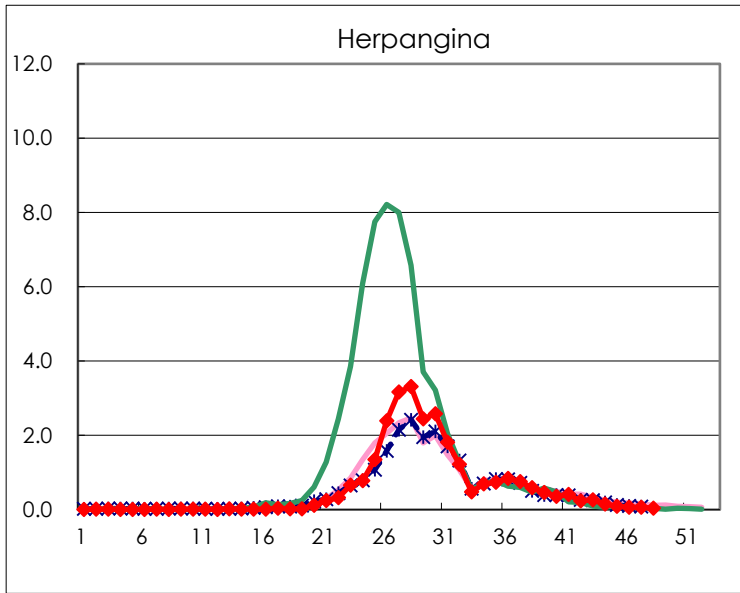
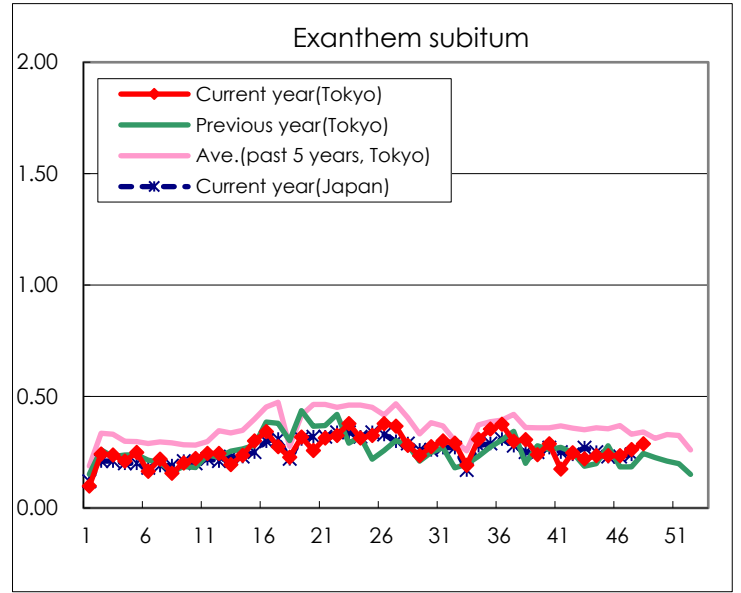
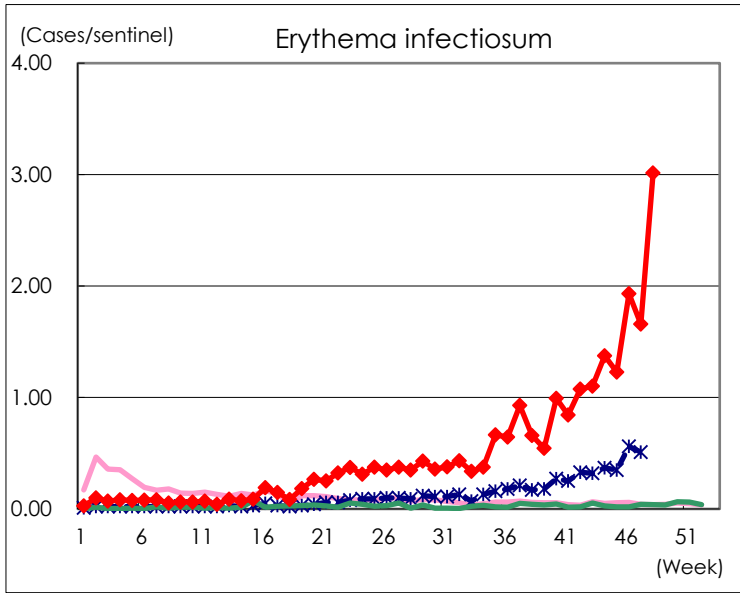
Number of patients with the diseases to be reported
by the designated clinics and hospitals

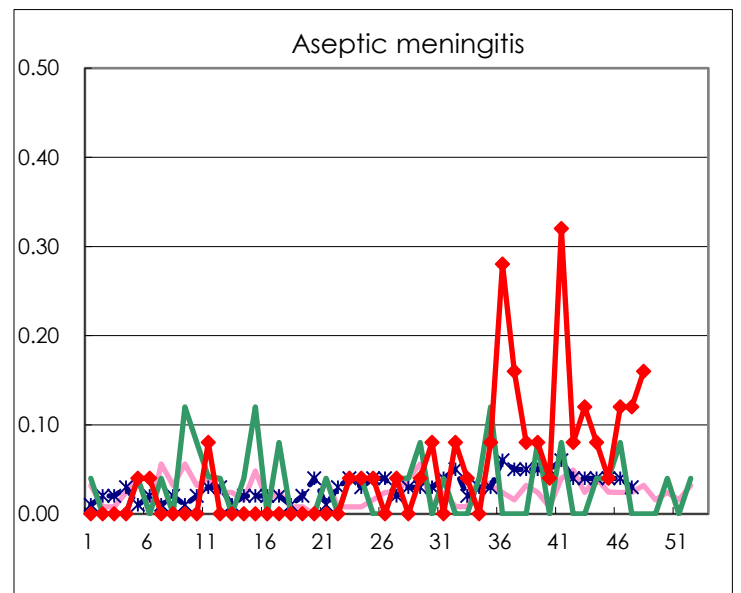
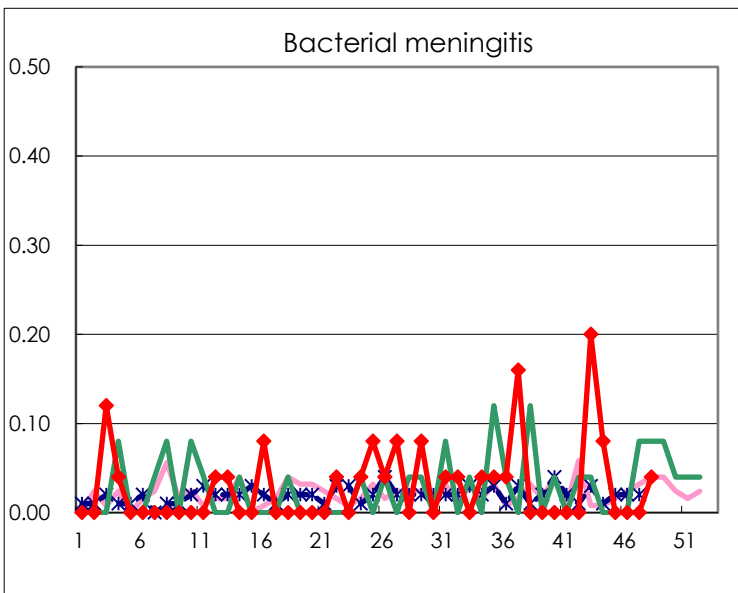
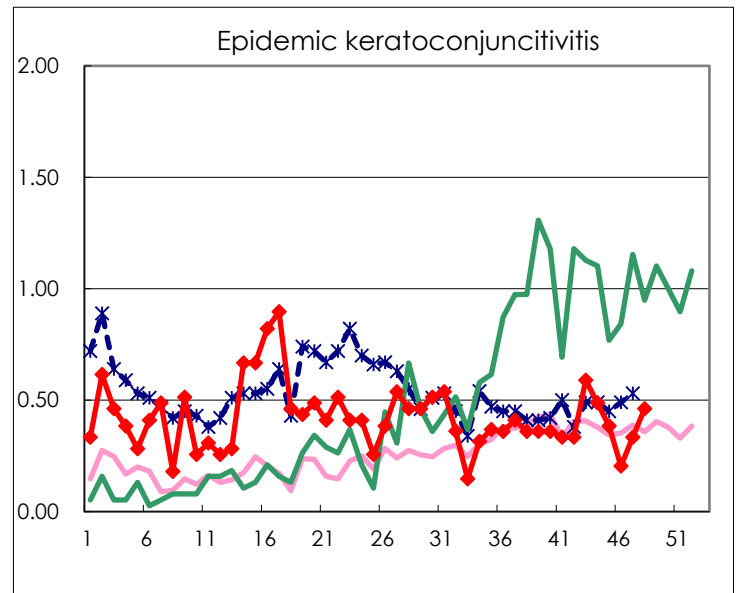
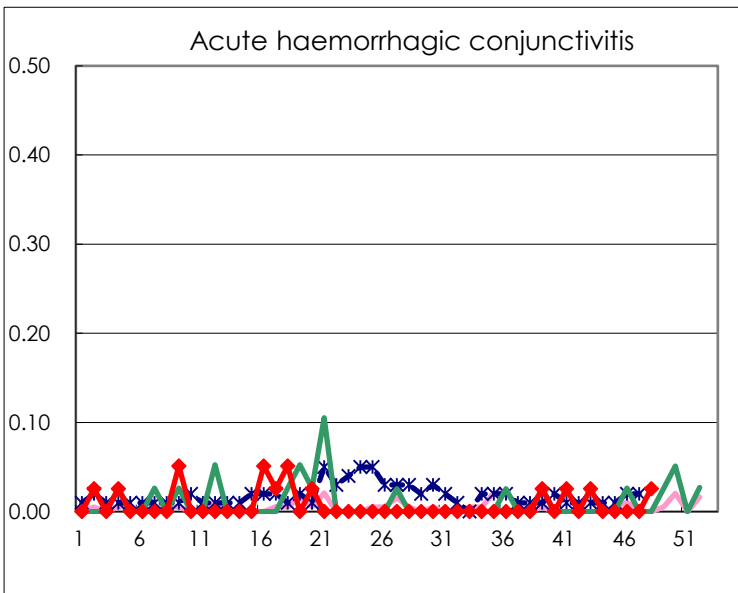
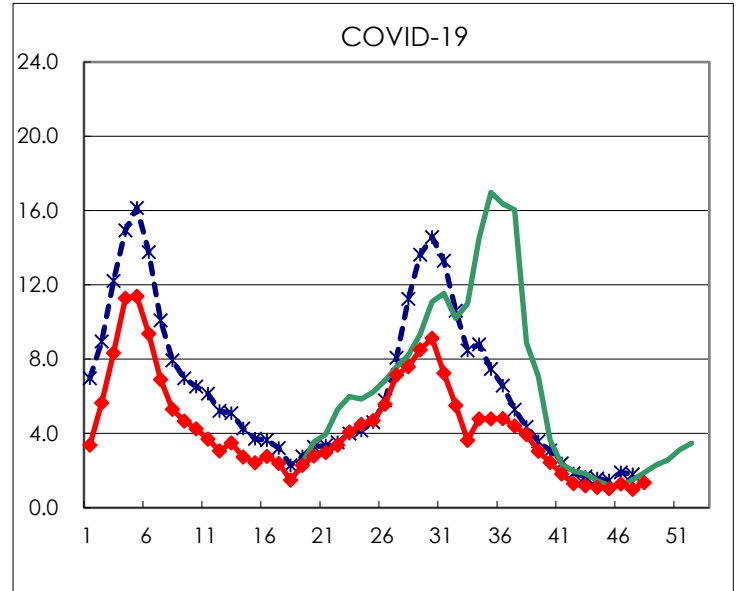
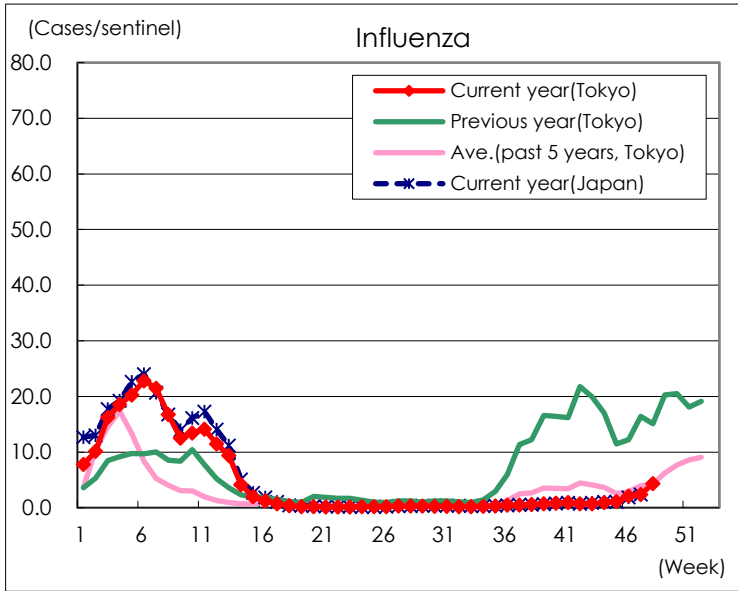
Diseases	Tokyo				
	45th	46th	47th	48th	/sentinel
Respiratory syncytial virus infection	52	59	62	57	0.22
Pharyngoconjunctival fever	31	30	43	65	0.25
Group A streptococcal pharyngitis	371	541	534	696	2.64
Infectious gastroenteritis	650	971	861	1,186	4.49
Chickenpox	54	57	55	92	0.35
Hand, foot, and mouth disease	1,626	1,113	830	703	2.66
Erythema infectiosum	324	510	438	796	3.02
Exanthem subitum	62	62	69	76	0.29
Herpangina	24	16	17	10	0.04
Mumps	8	9	5	9	0.03
Kawasaki disease	2	4	5	3	0.01
Cold with exanthems	10	14	13	8	0.03
Influenza	468	873	1,000	1,807	4.32
COVID-19	432	537	415	566	1.35
Acute hemorrhagic conjunctivitis				1	0.03
Epidemic keratoconjunctivitis	15	8	13	18	0.46
Bacterial meningitis				1	0.04
Aseptic meningitis	1	3	3	4	0.16
<i>Mycoplasma pneumoniae</i>	100	108	107	70	2.80
Chlamydial pneumonia (excluding <i>psittacosis</i>)	1			1	0.04
Infectious gastroenteritis (only by Rotavirus)				2	0.08
Influenza-Associated Hospitalizations	4	16	16	17	0.68
COVID-19-Associated Hospitalizations	69	53	51	69	2.76

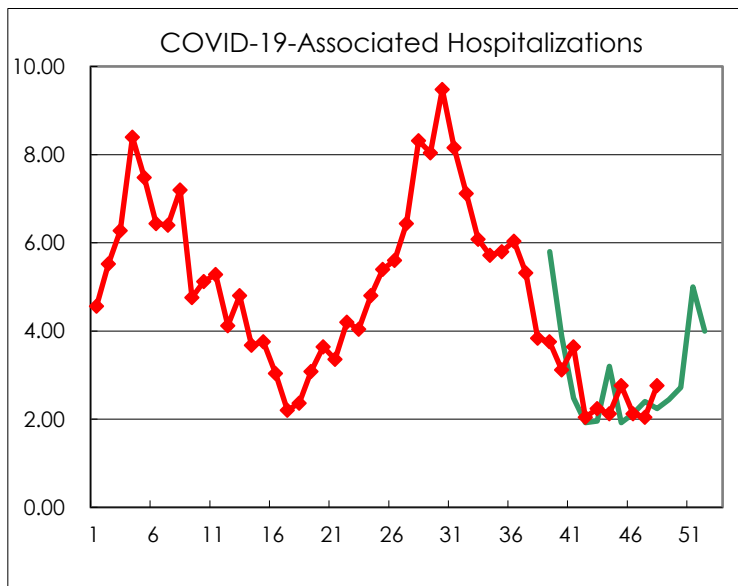
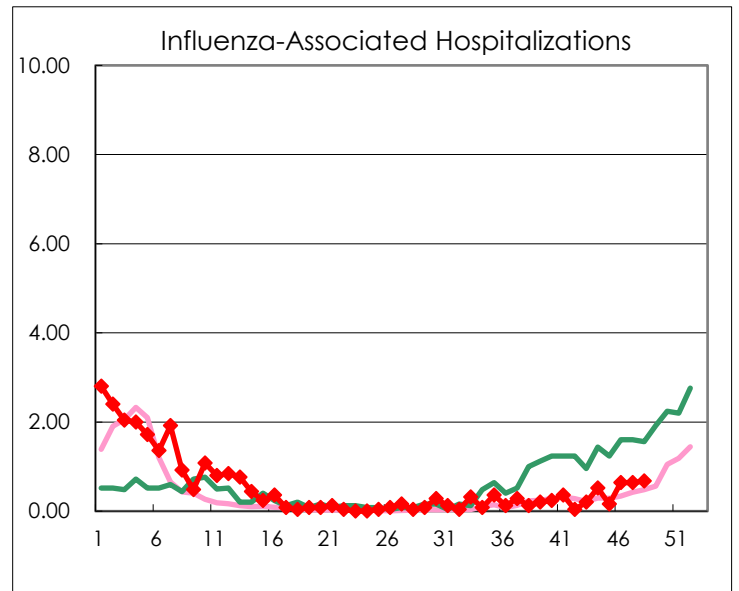
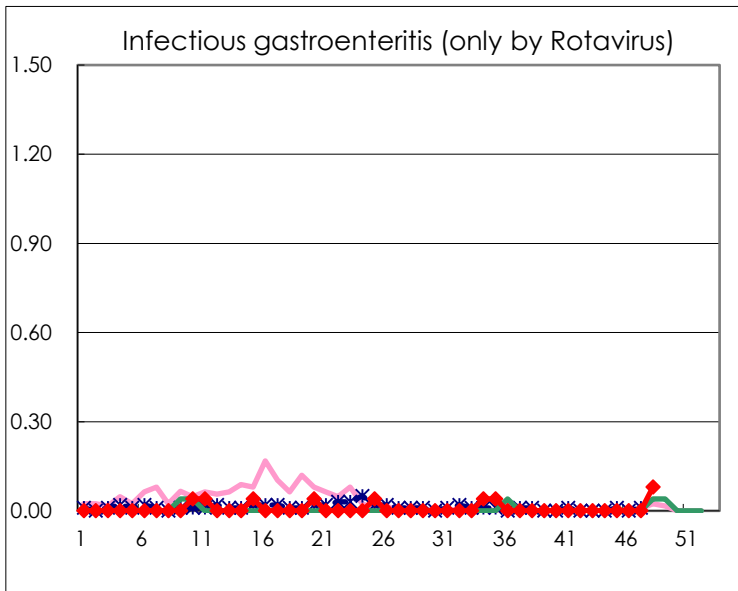
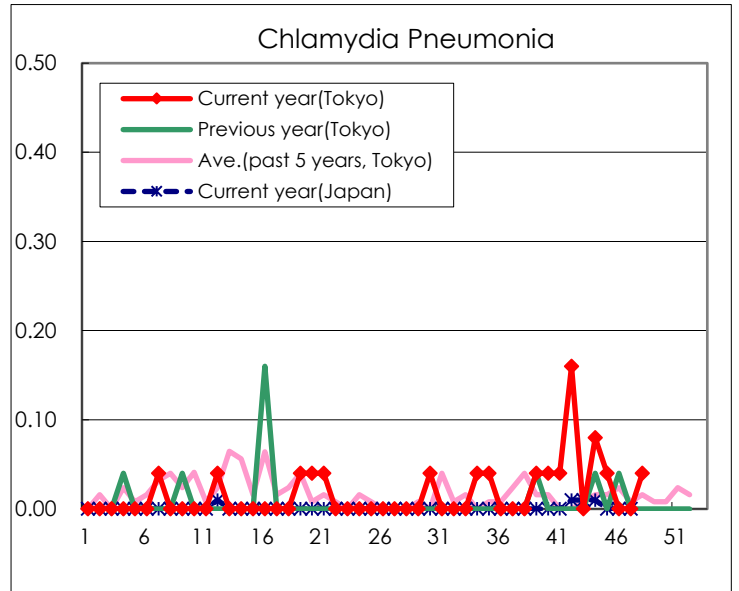
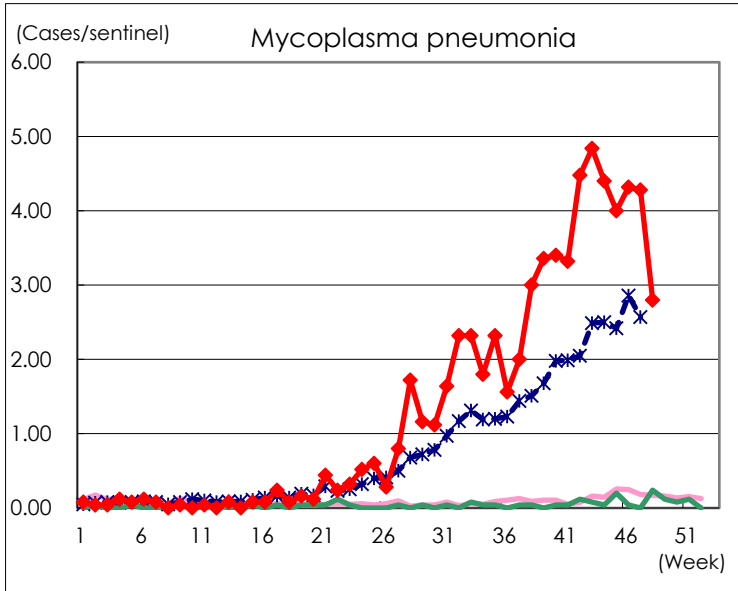
(Blank means 0.)

Disease Trend Graph (weekly reported cases per sentinel in comparison)









Number of sentinel facilities for weekly reporting		
Types of sentinels	Number of sentinels	Sentinels having reported
Pediatric	264	264
Influenza COVID-19	419	418
Ophthalmic	39	39
Specially-designated	25	25