

2024年12月12日 / 49号
12月2日 - 12月8日

东京传染病监控系统

所有医生均必须上报的传染病

医生必须向卫生所通报发生该疾病。卫生所则向東京都传染病信息中心报告个别案例。

定点医疗机构上报的传染病

由定点诊所或医院每周向卫生所上报来访患者数量。卫生所则向東京都传染病信息中心报告患者总数。東京都内约有500家定点诊所与医院。

東京都健康安全研究中心

TEL:81-3-3363-3213 FAX:81-3-5332-7365

e-mail:tmiph@section.metro.tokyo.jp

URL:idsctmiph.metro.tokyo.lg.jp/

全数掌握对象疾病 上报数量

类别	疾病	Diseases	东京				
			第46周	第47周	第48周	第49周	2024年累计
I	埃博拉出血热	Ebola hemorrhagic fever					
	克里米亚 - 刚果出血热	Crimean-Congo hemorrhagic fever					
	天花	Smallpox					
	南美出血热	South American hemorrhagic fever					
	鼠疫	Plague					
	马尔堡出血热	Marburg disease					
	拉萨热	Lassa fever					
II	脊髓灰质炎 (小儿麻痹)	Acute poliomyelitis					
	结核病	Tuberculosis	62	36	56	44	2,019
	白喉	Diphtheria					
	严重急性呼吸系统综合症 (SARS)	Severe Acute Respiratory Syndrome (SARS)					
	中东呼吸综合症	Middle East Respiratory Syndrome (MERS)					
	禽流感 (H5N1)	Avian influenza H5N1					
	禽流感 (H7N9)	Avian influenza H7N9					
III	霍乱	Cholera					2
	细菌性痢疾	Shigellosis				1	24
	肠道出血性大肠杆菌感染症	Enterohemorrhagic Escherichia coli infection	12	11	6	10	461
	伤寒	Typhoid fever					6
	副伤寒	Paratyphoid fever					3
IV	E型肝炎	Hepatitis E	3		1	1	131
	西尼罗热	West Nile fever					
	A型肝炎	Hepatitis A		1			19
	棘球蚴病	Echinococcosis					1
	Mpox	Mpox					14
	黄热病	Yellow fever					
	鹦鹉热	Psittacosis					
	鄂木斯克出血热	Omsk hemorrhagic fever					
	回归热	Relapsing fever					
	夸赛纳森林病 (Kyananur forest disease)	Kyasanur forest disease					
	Q型流感	Q fever					
	狂犬病	Rabies					
	球孢子菌病	Coccidioidomycosis					2
	兹卡病毒感染症	Zika virus infection					
	发热伴血小板减少综合症	Severe Fever with Thrombocytopenia Syndrome					
	肾综合症出血热	Hemorrhagic fever with renal syndrome					
	西部马脑炎	Western equine encephalitis					
	蜱媒脑炎	Tick-borne encephalitis					
	炭疽病	Anthrax					
	屈公病	Chikungunya fever	1	1	1		5
	恙虫病	Scrub typhus (Tsutsugamushi disease)					2
	登革热	Dengue fever	1			2	66
	东部马脑炎	Eastern equine encephalitis					
	禽流感 (除H5N1、H7N9以外)	Avian influenza (excluding H5N1 and H7N9)					
	立百病毒感染症	Nipah virus infection					
	日本红斑热	Japanese spotted fever					
	日本脑炎	Japanese encephalitis			1		1
	汉坦病毒肺综合症	Hantavirus pulmonary syndrome					
	猴疱疹	Herpes B virus infection					
	马鼻疽	Glanders					
	布鲁氏杆菌病	Brucellosis					
	委内瑞拉马脑炎 (Venezuelan equine encephalitis)	Venezuelan equine encephalitis					
	亨德拉病毒感染症	Hendra virus infection					
斑疹伤寒	Epidemic typhus						
肉毒杆菌中毒	Botulism						
疟疾	Malaria					10	
兔热病	Tularemia						
莱姆病	Lyme disease					1	
丽莎病毒感染症	Lyssavirus infection (excluding rabies)						
裂谷热	Rift valley fever						
类鼻疽	Melioidosis						
退伍军人症	Legionellosis	7	9	5	6	252	
钩端螺旋体病	Leptospirosis					5	
落基山斑疹热	Rocky mountain spotted fever						

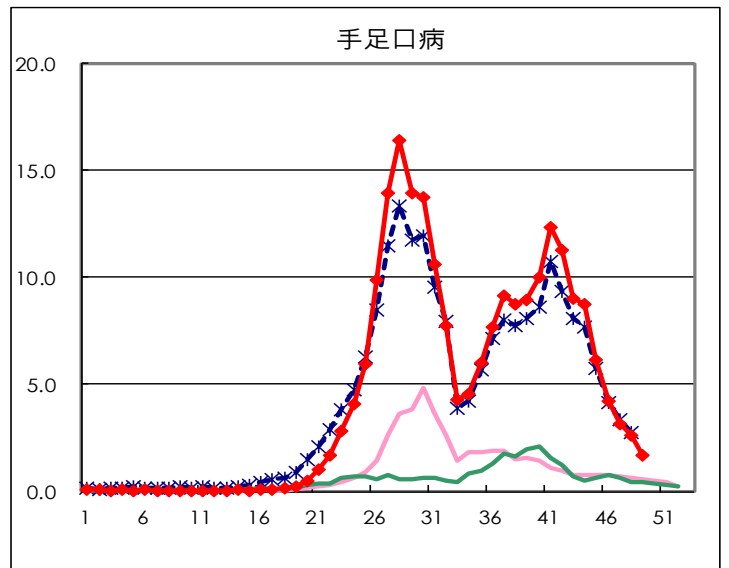
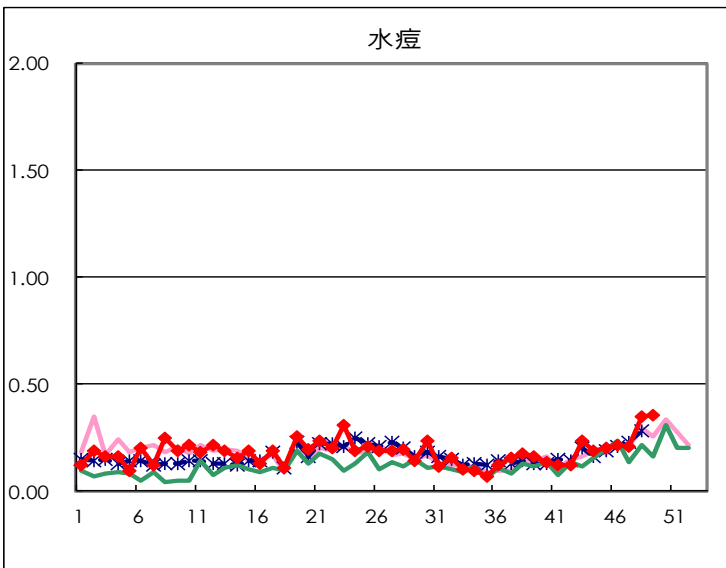
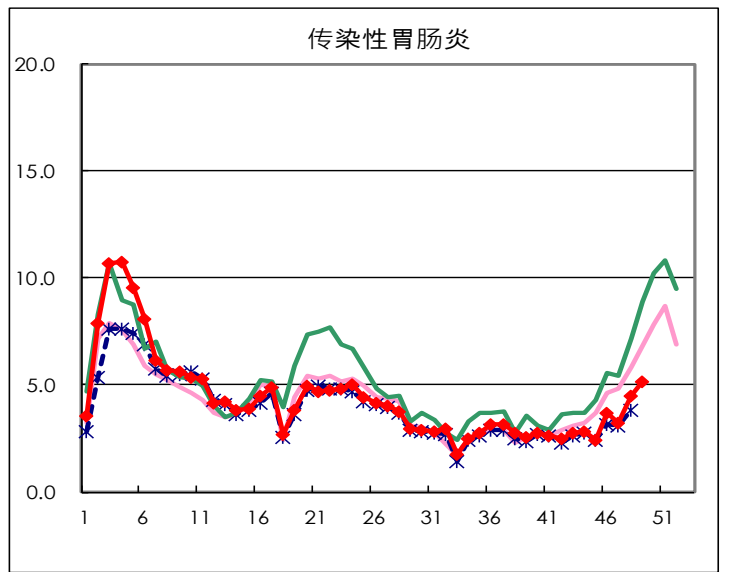
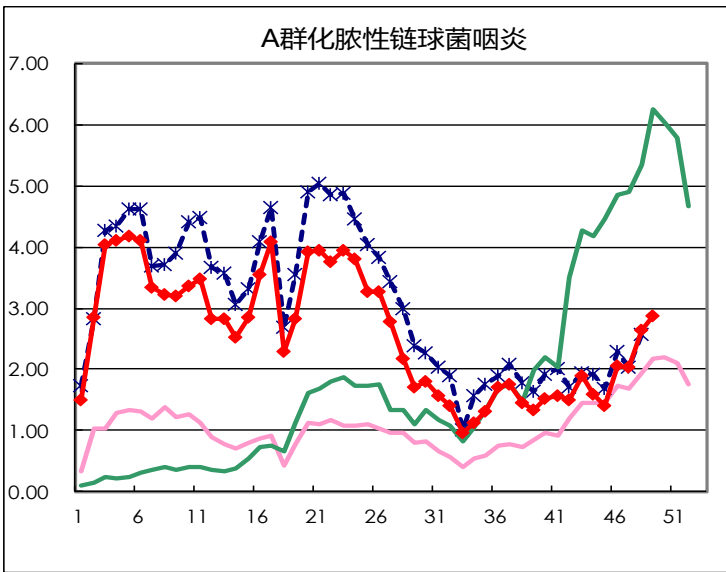
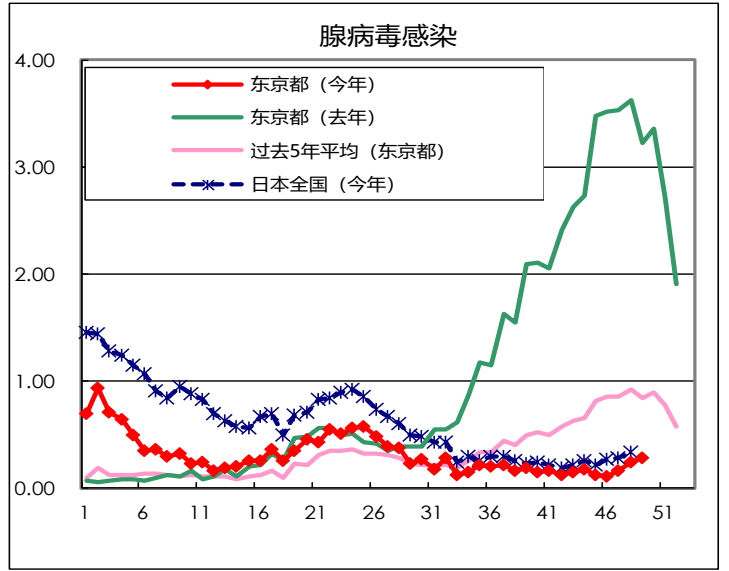
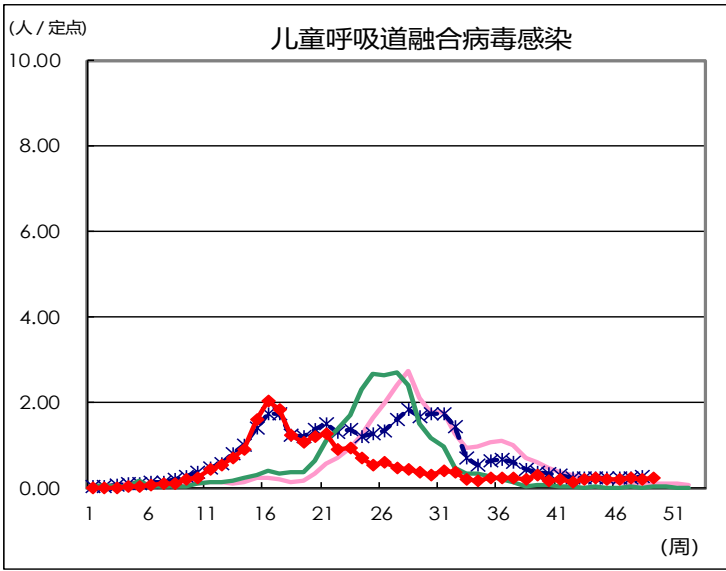
类别	疾病	Diseases	东京				
			第46周	第47周	第48周	第49周	2024年累计
V	阿米巴痢疾	Amebiasis	1	1		3	97
	病毒性肝炎 (除A型、E型以外)	Viral hepatitis (excluding hepatitis A and E)	1			4	41
	CRE infection	CRE infection	3	5	5	10	195
	Acute Flaccid Paralysis (excluding Acute poliomyelitis)	Acute Flaccid Paralysis (excluding Acute poliomyelitis)			1		5
	急性脑炎	Acute encephalitis (excluding JE and WNE)		3	1	2	44
	隐孢子虫病	Cryptosporidiosis					14
	库贾氏病	Creutzfeldt-Jakob disease			1		10
	酿脓链球菌 (Streptococcus pyogenes) 感染症	Severe invasive streptococcal infections (TSLs)	2	2	2	7	235
	后天免疫缺陷综合症	Acquired immunodeficiency syndrome (AIDS)	4	6	8	3	271
	贾第虫病	Giardiasis		1			14
	侵袭性嗜血杆菌感染症	Invasive <i>Haemophilus influenzae</i> disease		2	4	2	67
	侵袭性脑膜炎感染症	Invasive meningococcal disease					10
	侵袭性肺炎链球菌感染症	Invasive pneumococcal disease	4	6	9	5	245
	水痘 (仅限住院病例)	Varicella (limited to hospitalized case)	2		4	1	63
	先天性德国麻疹综合症	Congenital rubella syndrome					
	梅毒	Syphilis	71	69	62	73	3,551
	播散性隐球菌症	Disseminated cryptococcosis					19
	破伤风	Tetanus					2
	万古霉素耐金黄色葡萄球菌 (Vancomycin-resistant <i>Staphylococcus aureus</i> , VRSA) 感染症	Vancomycin-resistant <i>S. aureus</i> infection					
	万古霉素抗药性肠球菌 (Vancomycin-Resistant Enterococci, VRE) 感染症	Vancomycin-resistant Enterococcus infection					7
百日咳	Pertussis	13	21	17	15	341	
德国麻疹	Rubella					1	
麻疹	Measles					10	
抗药性不动杆菌感染症	MDRA infection					1	

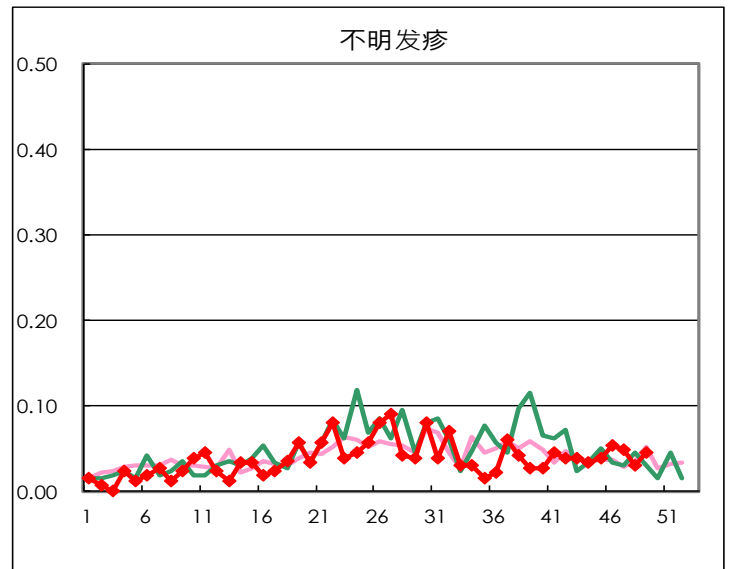
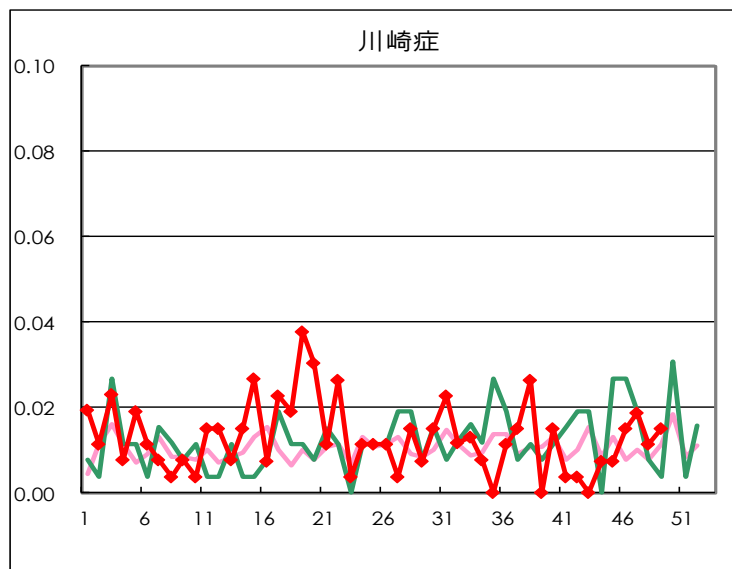
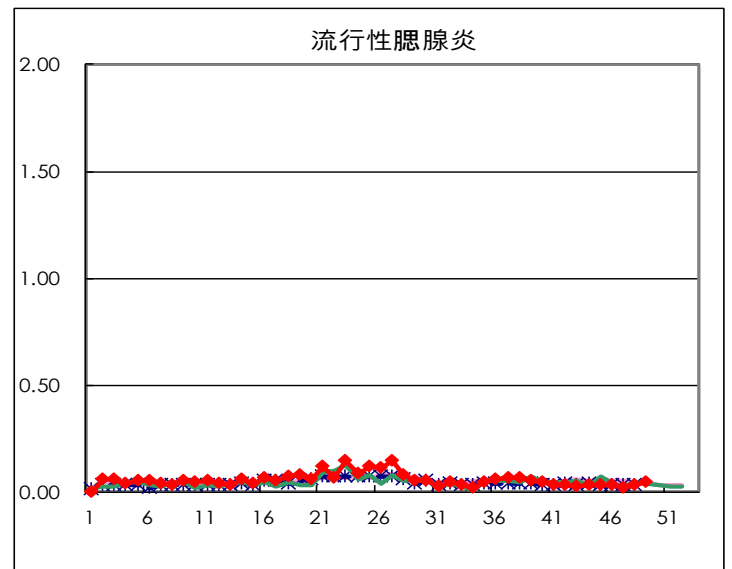
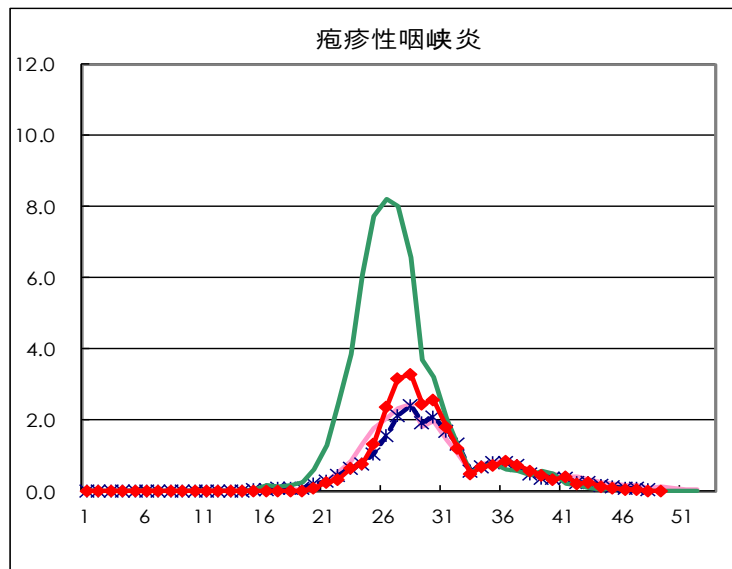
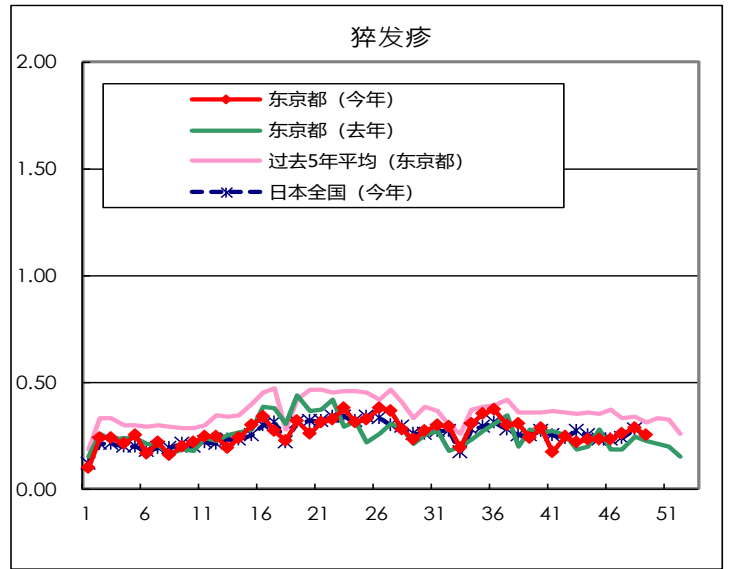
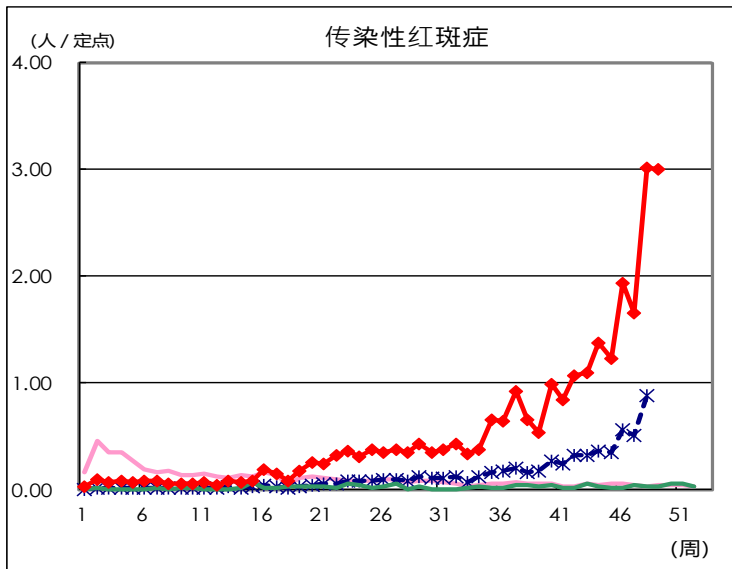
定点掌握对象疾病报告数量

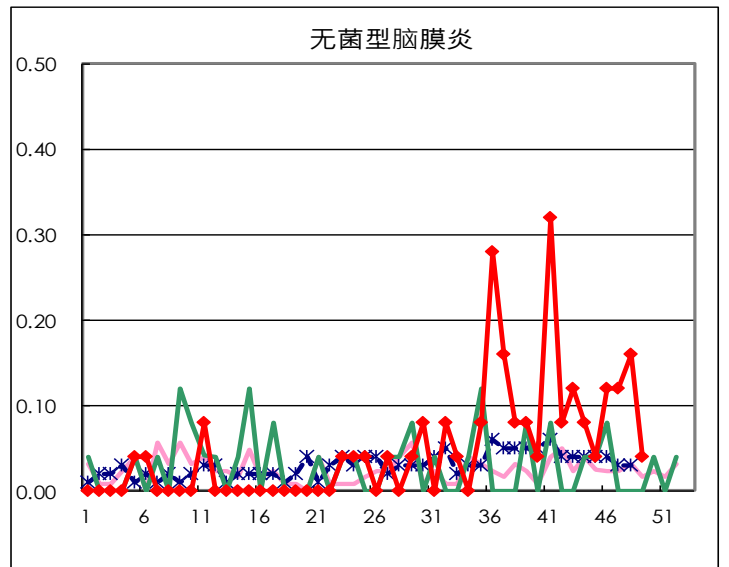
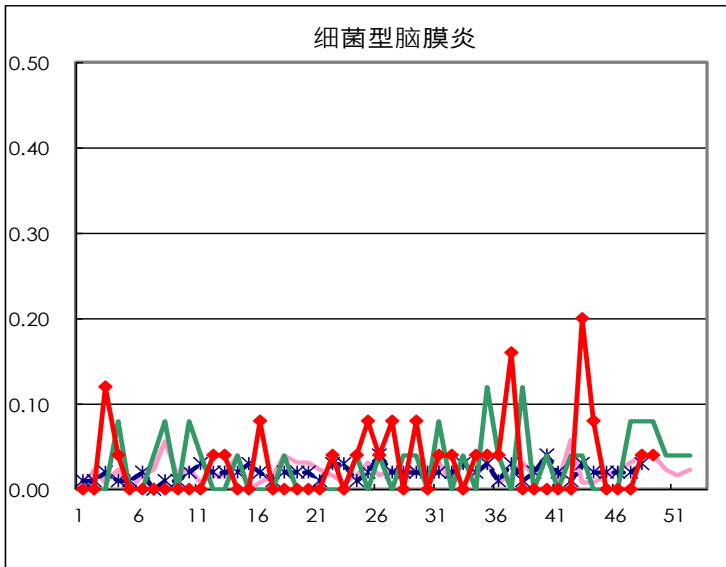
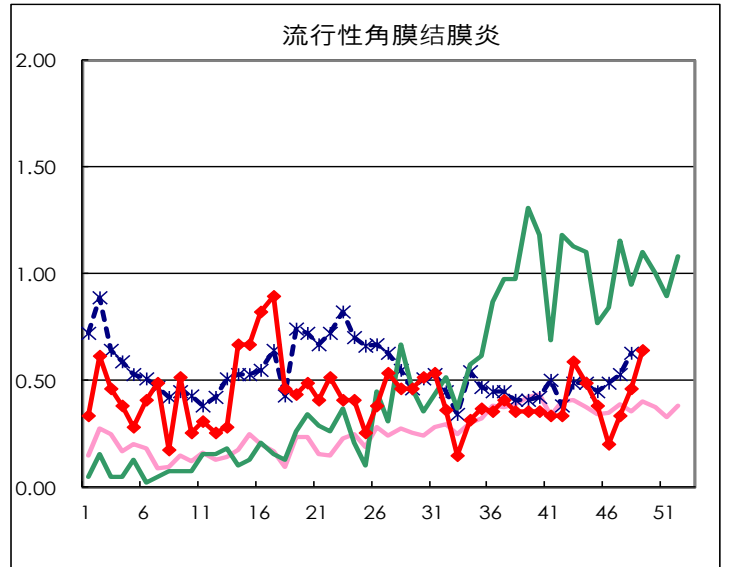
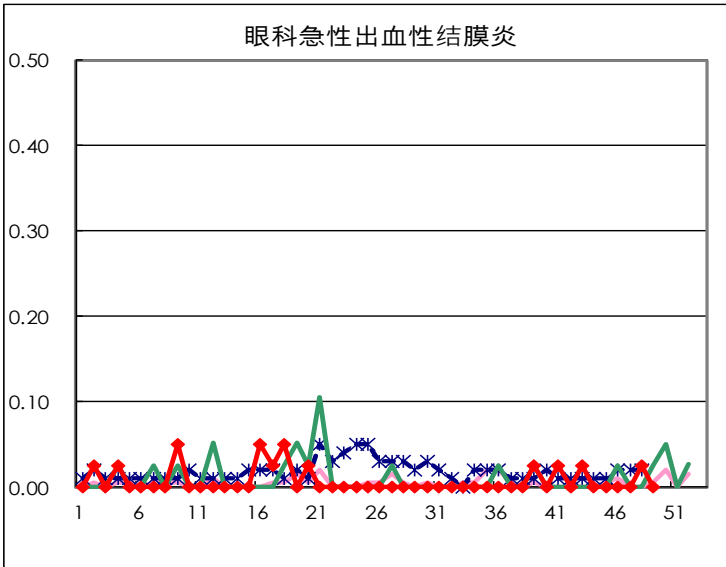
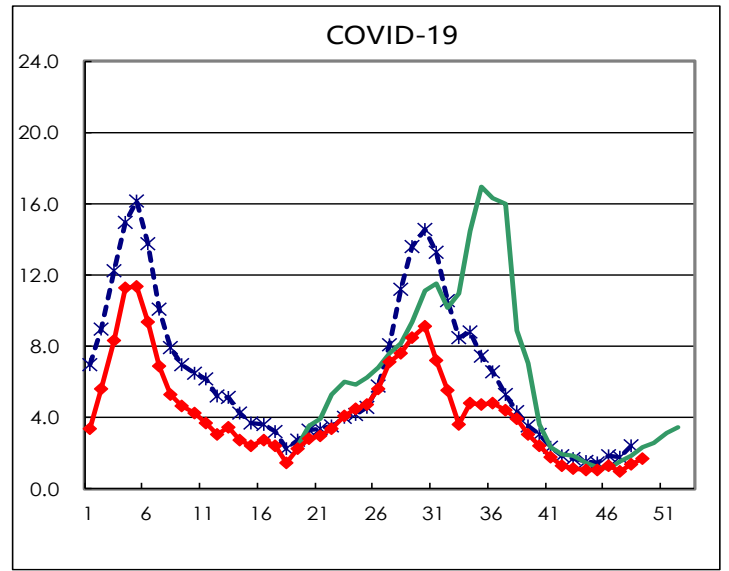
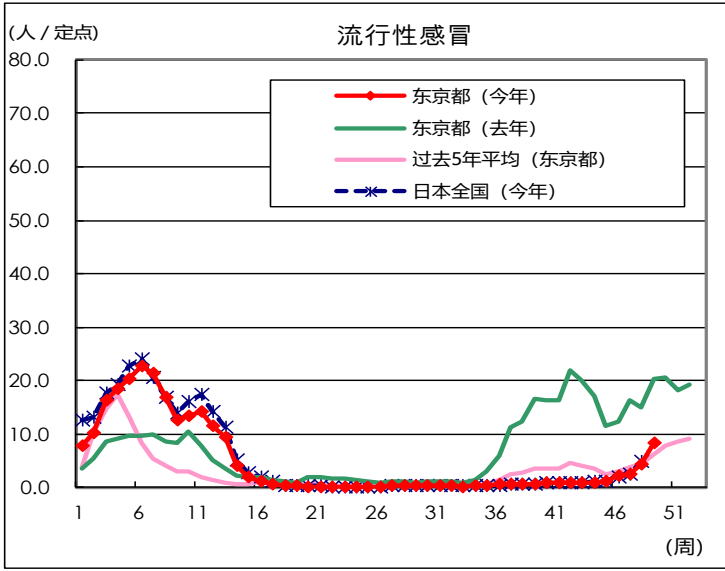
疾病	Diseases	东京				
		第46周	第47周	第48周	第49周	每哨兵
儿童呼吸道融合病毒感染	Respiratory syncytial virus infection	59	62	57	66	0.25
腺病毒感染	Pharyngoconjunctival fever	30	43	65	76	0.29
A群化脓性链球菌咽炎	Group A streptococcal pharyngitis	541	534	696	759	2.88
传染性胃肠炎	Infectious gastroenteritis	971	861	1,186	1,372	5.20
水痘	Chickenpox	57	55	92	94	0.36
手足口病	Hand, foot, and mouth disease	1,113	830	703	454	1.72
传染性红斑症	Erythema infectiosum	510	438	796	792	3.00
猝发疹	Exanthem subitum	62	69	76	67	0.25
疱疹性咽峡炎	Herpangina	16	17	10	5	0.02
流行性腮腺炎	Mumps	9	5	9	12	0.05
川崎症	Kawasaki disease	4	5	3	4	0.02
不明发疹	Cold with exanthems	14	13	8	12	0.05
流行性感冒	Influenza	873	1,000	1,807	3,425	8.19
COVID-19	COVID-19	537	415	566	719	1.72
眼科急性出血性结膜炎	Acute hemorrhagic conjunctivitis			1		
流行性角膜炎	Epidemic keratoconjunctivitis	8	13	18	25	0.64
细菌型脑膜炎	Bacterial meningitis			1	1	0.04
无菌型脑膜炎	Aseptic meningitis	3	3	4	1	0.04
霉浆菌肺炎	Mycoplasma pneumonia	108	107	70	81	3.24
披衣菌肺炎 (除鹦鹉病外)	Chlamydial pneumonia (excluding psittacosis)			1		
感染性肠胃炎 (轮状病毒)	Infectious gastroenteritis (only by Rotavirus)			2	1	0.04
流行性感冒住院	Influenza-Associated Hospitalizations	16	16	18	37	1.48
COVID-19-Associated Hospitalizations	COVID-19-Associated Hospitalizations	53	51	69	81	3.24

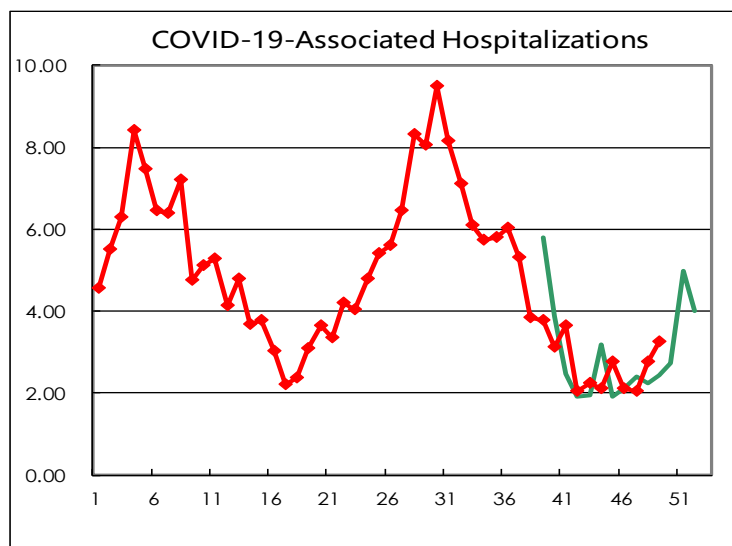
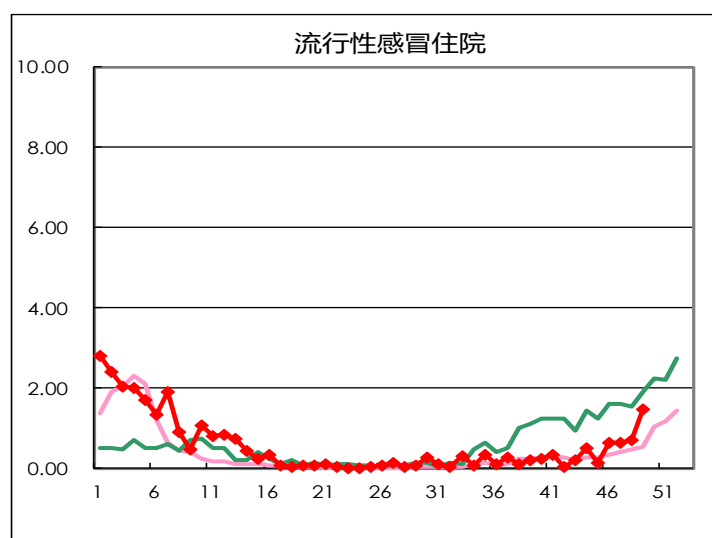
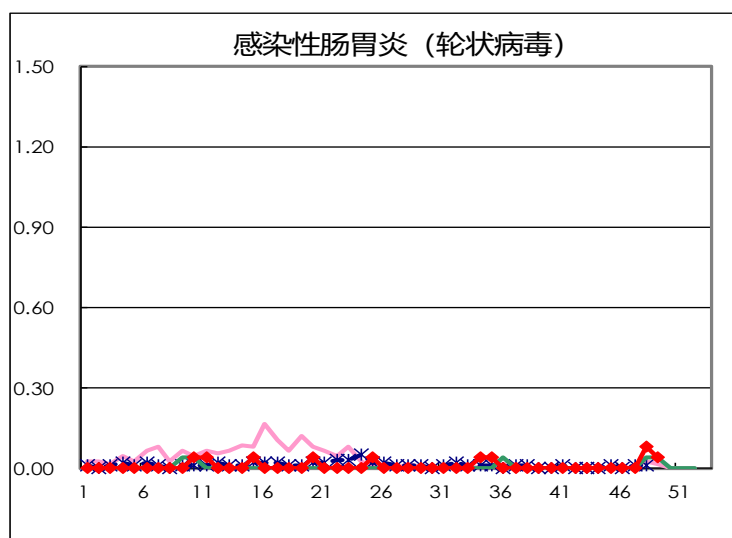
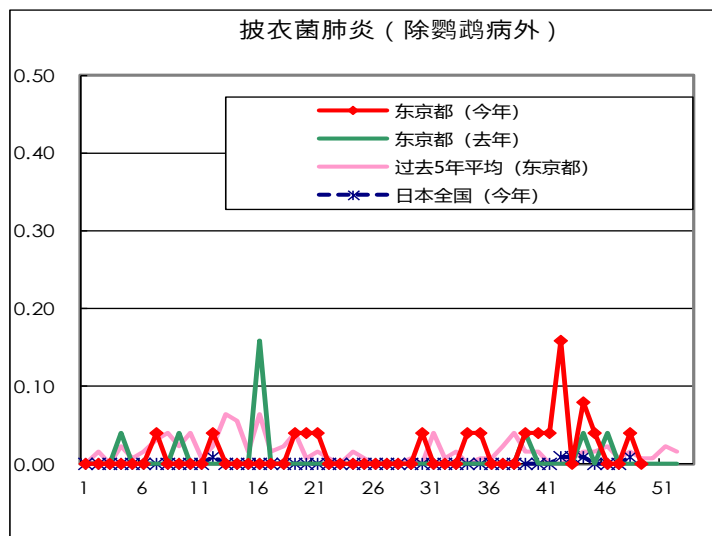
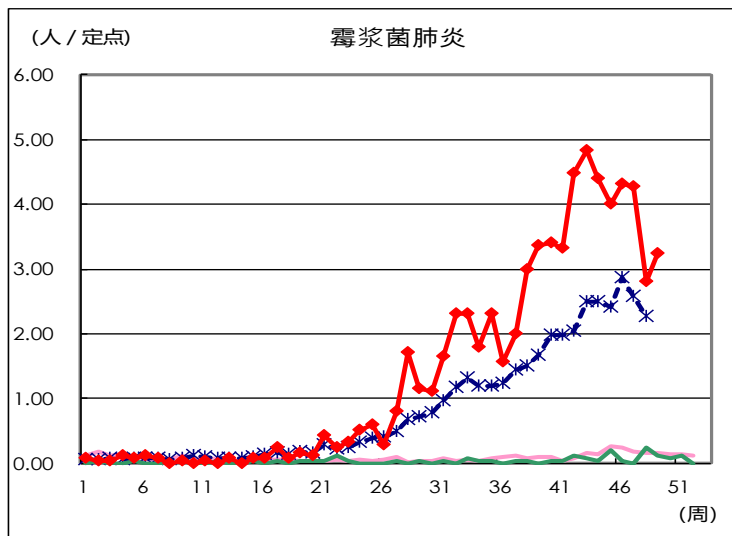
(空白为0)

定点掌握对象疾病在每定点医疗机构的报告数量









每周报告的哨点设施数量

哨兵的类型	定点医疗机构数量	报告医疗机构数量
小儿科的	264	264
流行性感冒 COVID-19	419	418
眼科	39	39
专门设计的	25	25