

---

INFECTIOUS DISEASES WEEKLY REPORT

# TOKYO IDWR

Tokyo Metropolitan Infectious Disease Surveillance Center

## 12 December 2024 / Number 49 ( 12/2 ~ 12/8 )

### Surveillance System in Tokyo, Japan

The infectious diseases which all physicians must report  
All physicians must report to health centers the incidence of the diseases which are shown at page one. Health centers electronically report the individual cases to Tokyo Metropolitan Infectious Disease Surveillance Center.

The infectious diseases required to be reported by the sentinels  
The numbers of patients who visit the sentinel clinics or hospitals during a week are reported to health centers in Tokyo. And they electronically report the numbers to Tokyo Metropolitan Infectious Disease Surveillance Center. We have about 500 sentinel clinics and hospitals in Tokyo.

Tokyo Metropolitan Institute of Public Health

TEL:81-3-3363-3213 FAX:81-3-5332-7365

e-mail:tmiph@section.metro.tokyo.jp

URL:idsc.tmiph.metro.tokyo.lg.jp/

---

Number of patients with the diseases which all physicians must report

Category	Diseases	Tokyo				
		46th	47th	48th	49th	Cum 2024
I	Ebola hemorrhagic fever					
	Crimean-Congo hemorrhagic fever					
	Smallpox					
	South American hemorrhagic fever					
	Plague					
	Marburg disease					
	Lassa fever					
II	Acute poliomyelitis					
	Tuberculosis	62	36	56	44	2,019
	Diphtheria					
	Severe Acute Respiratory Syndrome(SARS)					
	Middle East Respiratory Syndrome (MERS)					
	Avian influenza H5N1					
III	Avian influenza H7N9					
	Cholera					2
	Shigellosis				1	24
	Enterohemorrhagic Escherichia coli infection	12	11	6	10	461
	Typhoid fever					6
IV	Paratyphoid fever					3
	Hepatitis E	3		1	1	131
	West Nile fever					
	Hepatitis A		1			19
	Echinococcosis					1
	Mpox					14
	Yellow fever					
	Psittacosis					
	Omsk hemorrhagic fever					
	Relapsing fever					
	Kyasanur forest disease					
	Q fever					
	Rabies					
	Coccidioidomycosis					2
	Zika virus infection					
	Severe Fever with Thrombocytopenia Syndrome					
	Hemorrhagic fever with renal syndrome					
	Western equine encephalitis					
	Tick-borne encephalitis					
	Anthrax					
	Chikungunya fever	1	1	1		5
	Scrub typhus(Tsutsugamushi disease)					2
	Dengue fever	1			2	66
	Eastern equine encephalitis					
	Avian influenza (excluding H5N1 and H7N9)					
	Nipah virus infection					
	Japanese spotted fever					
	Japanese encephalitis			1		1
	Hantavirus pulmonary syndrome					
	Herpes B virus infection					
	Glanders					
	Brucellosis					
	Venezuelan equine encephalitis					
Hendra virus infection						
Epidemic typhus						
Botulism						
Malaria					10	
Tularemia						
Lyme disease					1	
Lyssavirus infection(excluding rabies)						
Rift valley fever						
Melioidosis						
Legionellosis	7	9	5	6	252	
Leptospirosis					5	
Rocky mountain spotted fever						

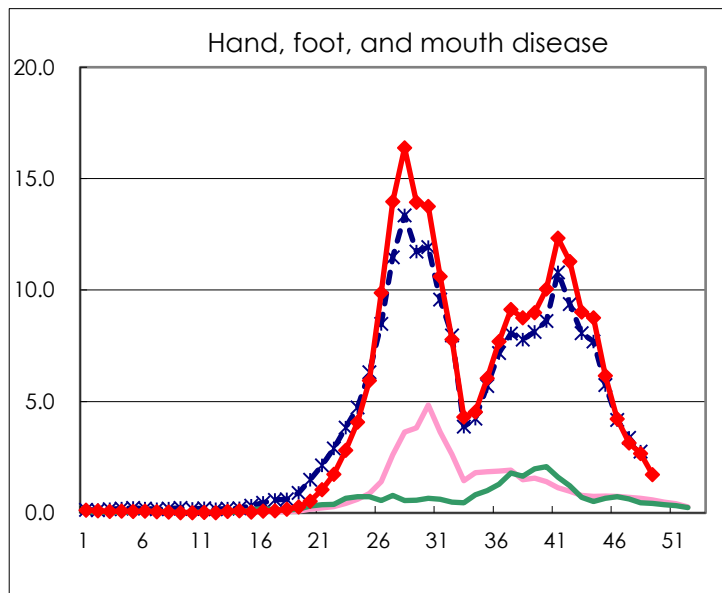
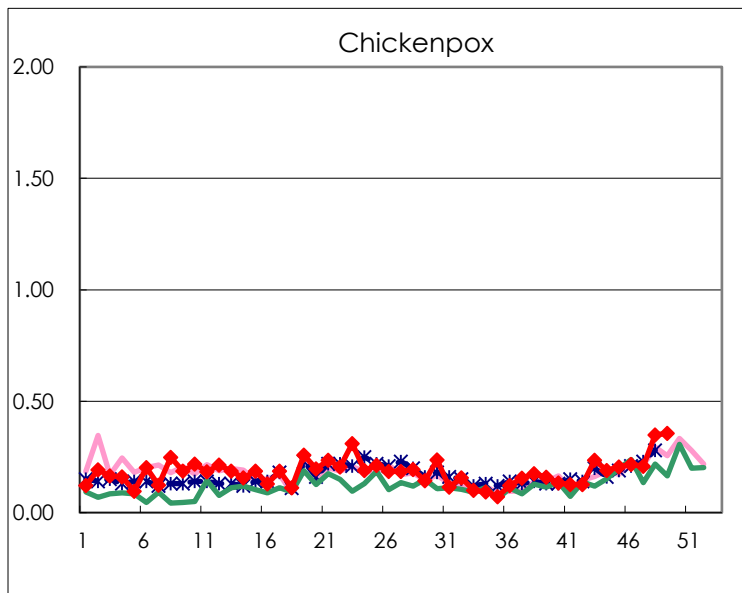
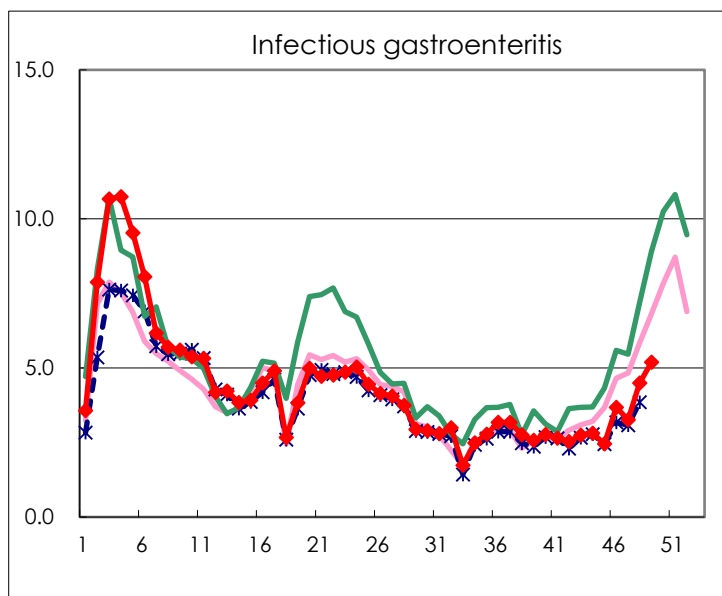
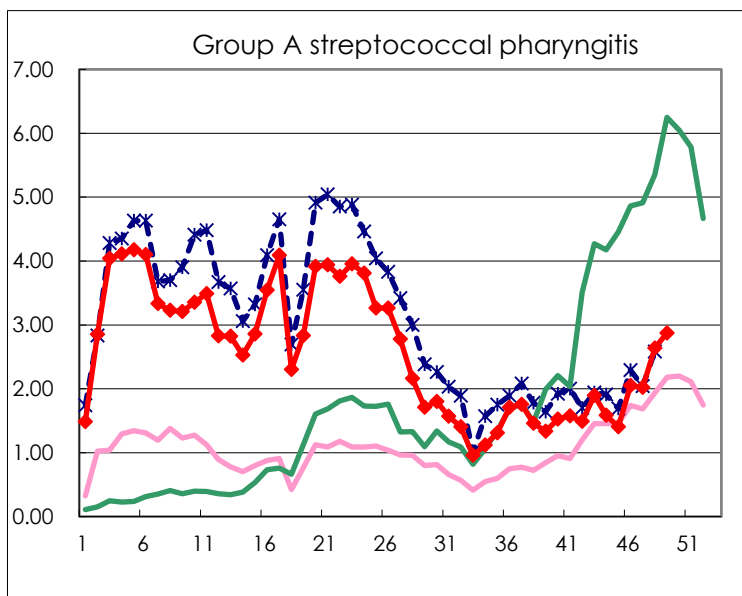
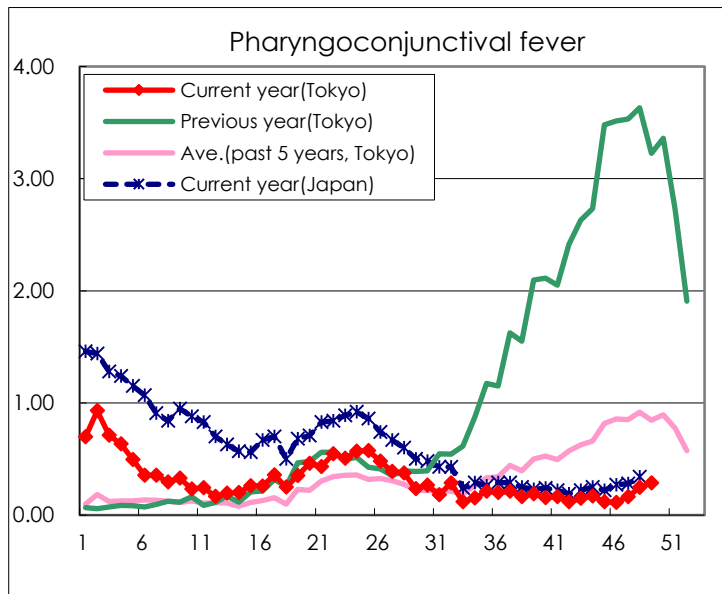
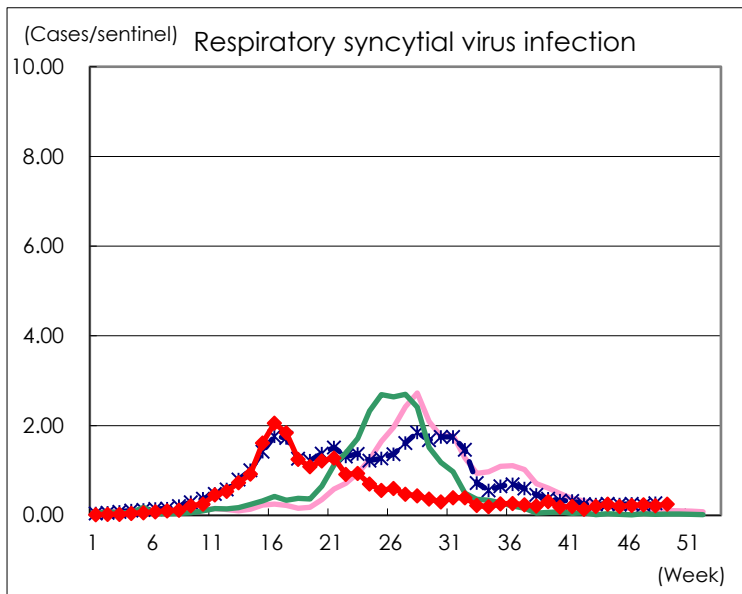
Category	Diseases	Tokyo				
		46th	47th	48th	49th	Cum 2024
V	Amebiasis	1	1		3	97
	Viral hepatitis(excluding hepatitis A and E)	1			4	41
	CRE infection	3	5	5	10	195
	Acute Flaccid Paralysis (excluding Acute poliomyelitis)			1		5
	Acute encephalitis(excluding JE and WNE)		3	1	2	44
	Cryptosporidiosis					14
	Creutzfeldt-Jakob disease			1		10
	Severe invasive streptococcal infections(TSLS)	2	2	2	7	235
	Acquired immunodeficiency syndrome (AIDS)	4	6	8	3	271
	Giardiasis		1			14
	Invasive <i>Haemophilus influenzae</i> disease		2	4	2	67
	Invasive meningococcal disease					10
	Invasive pneumococcal disease	4	6	9	5	245
	Varicella (limited to hospitalized case)	2		4	1	63
	Congenital rubella syndrome					
	Syphilis	71	69	62	73	3,551
	Disseminated cryptococcosis					19
	Tetanus					2
	Vancomycin-resistant <i>S. aureus</i> infection					
	Vancomycin-resistant <i>Enterococcus</i> infection					7
	Pertussis	13	21	17	15	341
	Rubella					1
Measles					10	
MDRA infection					1	

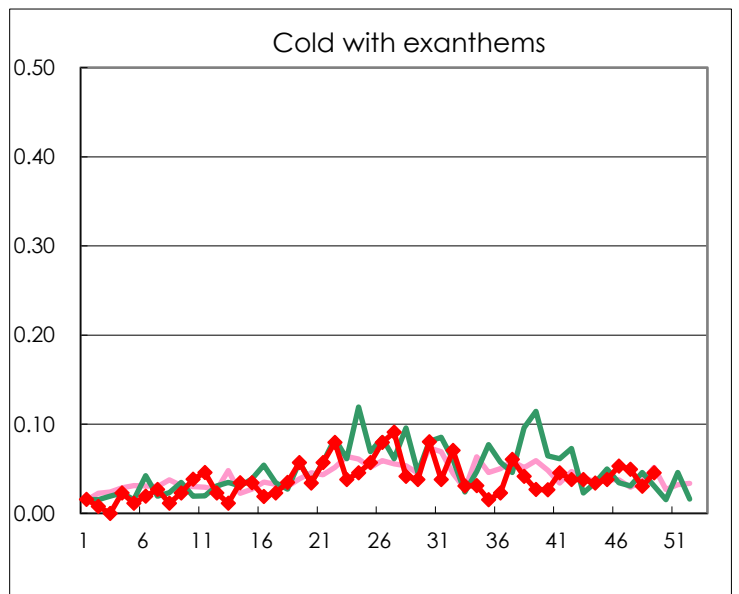
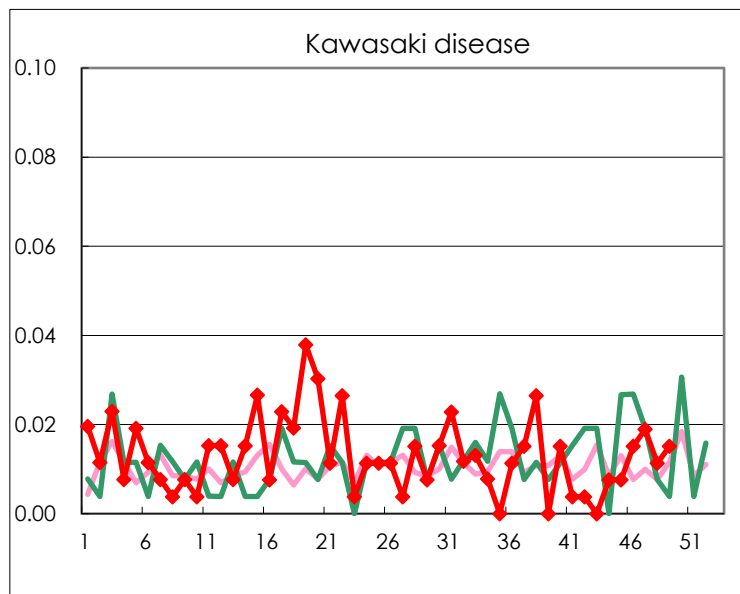
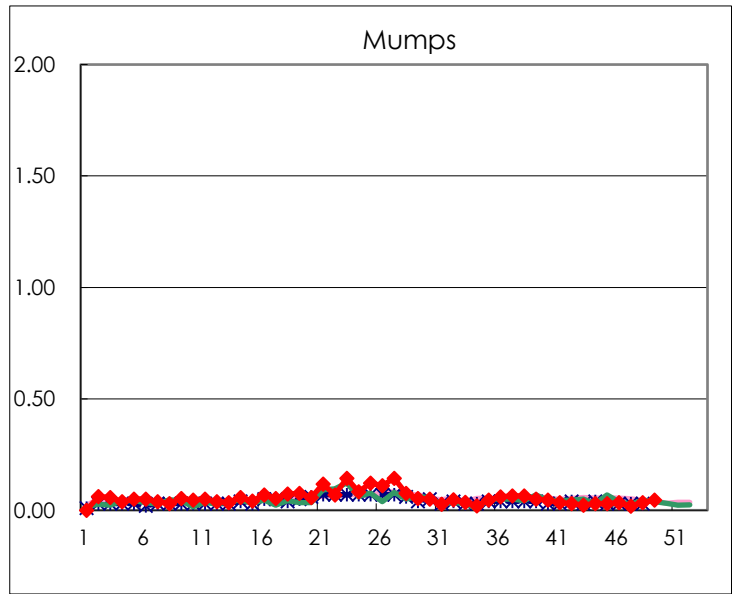
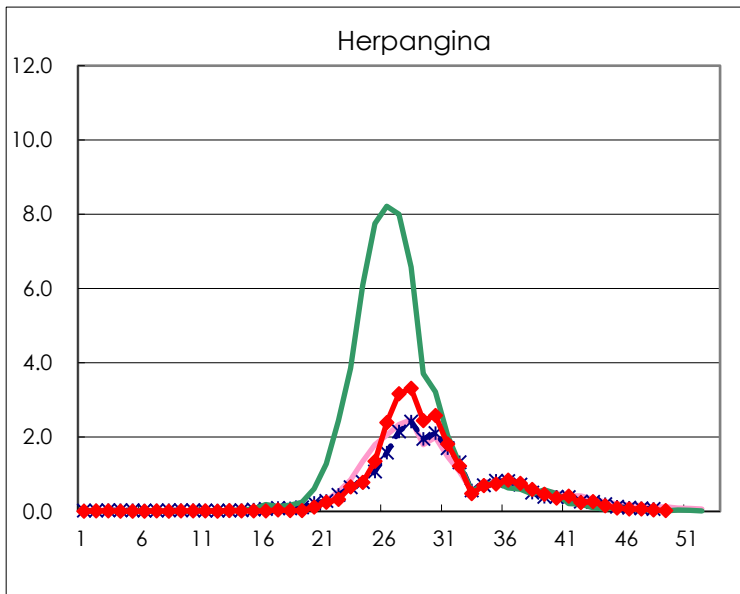
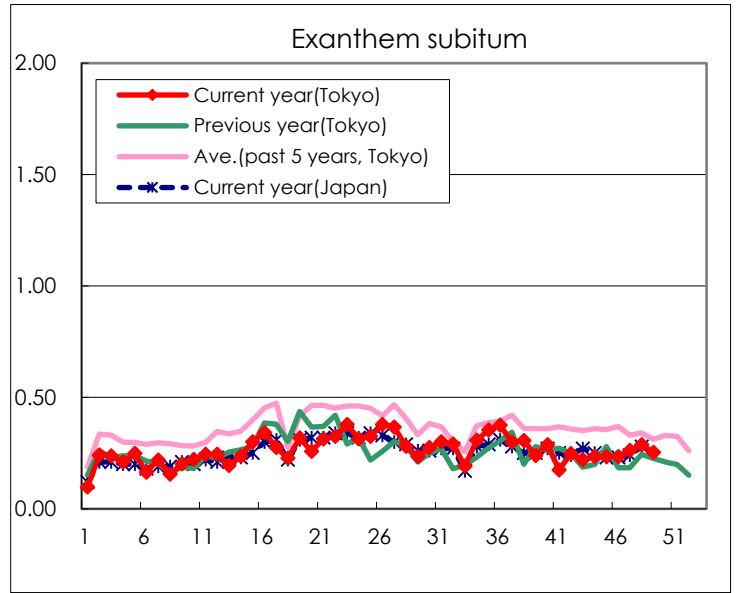
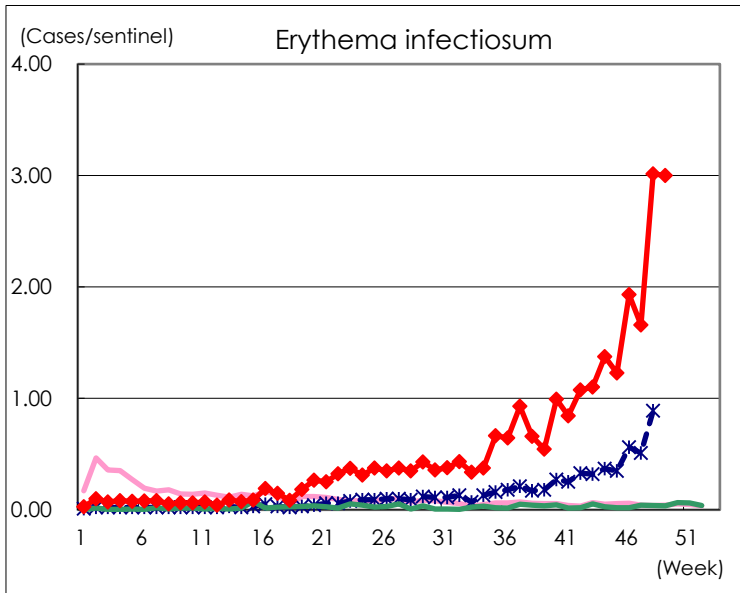
Number of patients with the diseases to be reported  
by the designated clinics and hospitals

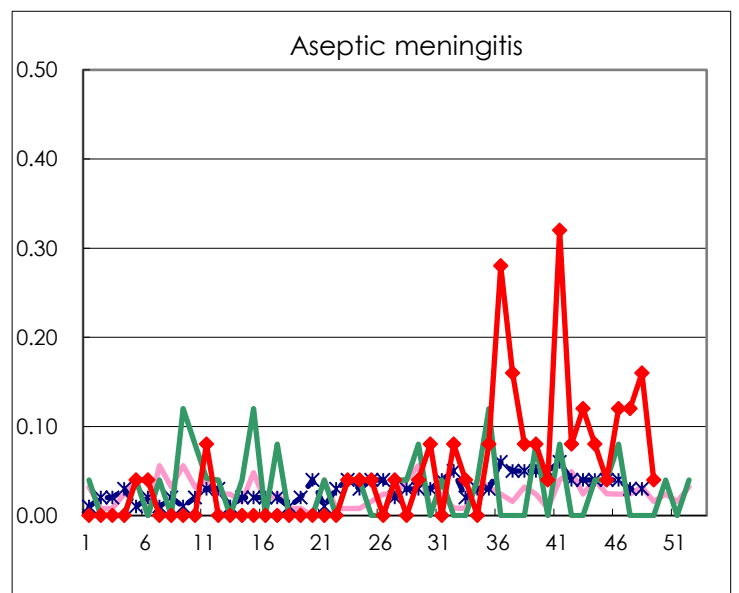
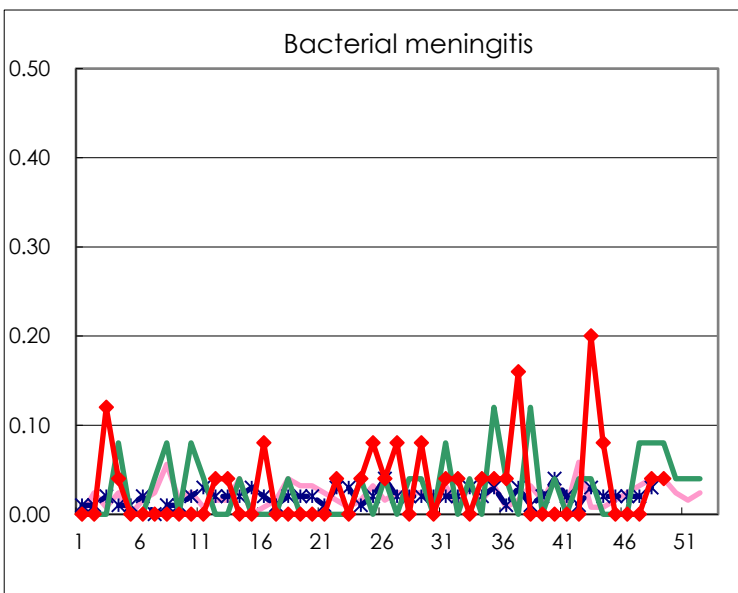
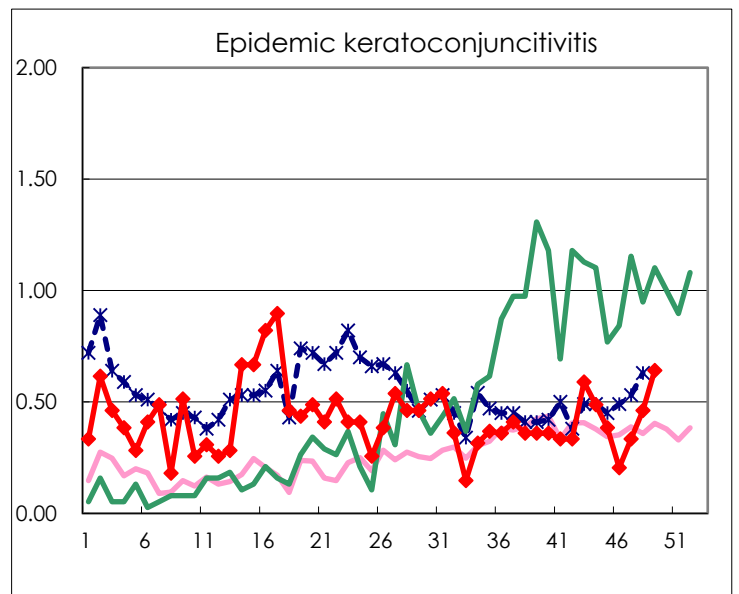
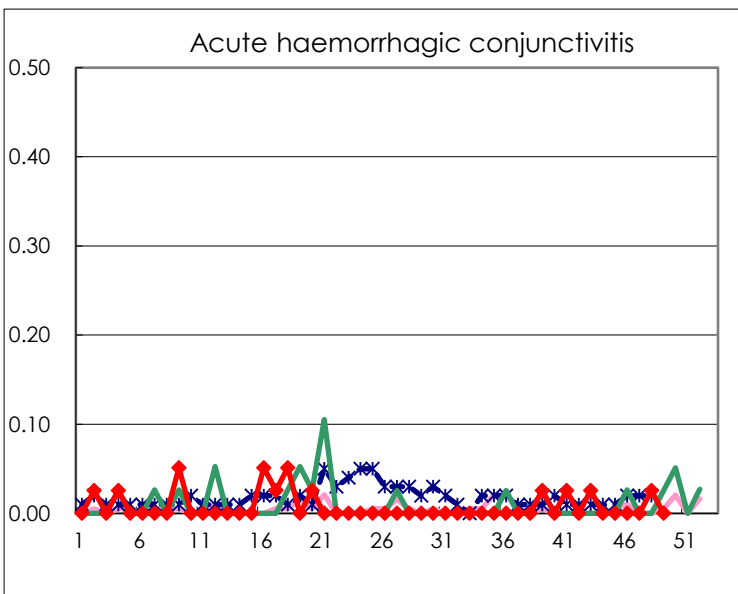
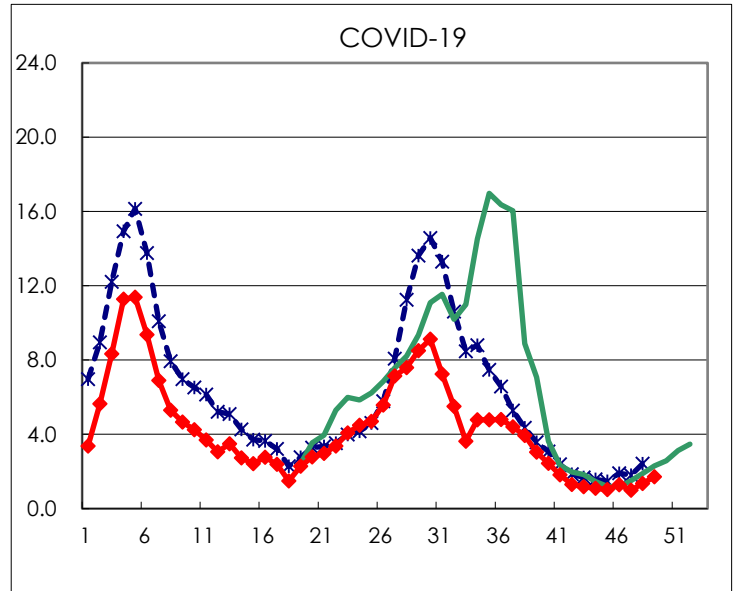
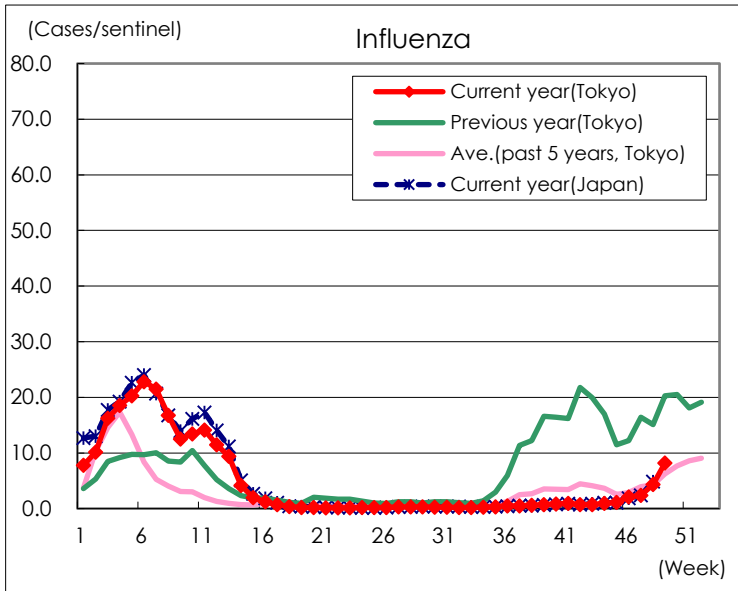
Diseases	Tokyo				
	46th	47th	48th	49th	/sentinel
Respiratory syncytial virus infection	59	62	57	66	0.25
Pharyngoconjunctival fever	30	43	65	76	0.29
Group A streptococcal pharyngitis	541	534	696	759	2.88
Infectious gastroenteritis	971	861	1,186	1,372	5.20
Chickenpox	57	55	92	94	0.36
Hand, foot, and mouth disease	1,113	830	703	454	1.72
Erythema infectiosum	510	438	796	792	3.00
Exanthem subitum	62	69	76	67	0.25
Herpangina	16	17	10	5	0.02
Mumps	9	5	9	12	0.05
Kawasaki disease	4	5	3	4	0.02
Cold with exanthems	14	13	8	12	0.05
Influenza	873	1,000	1,807	3,425	8.19
COVID-19	537	415	566	719	1.72
Acute hemorrhagic conjunctivitis			1		
Epidemic keratoconjunctivitis	8	13	18	25	0.64
Bacterial meningitis			1	1	0.04
Aseptic meningitis	3	3	4	1	0.04
<i>Mycoplasma pneumoniae</i>	108	107	70	81	3.24
Chlamydial pneumonia (excluding <i>psittacosis</i> )			1		
Infectious gastroenteritis (only by Rotavirus)			2	1	0.04
Influenza-Associated Hospitalizations	16	16	18	37	1.48
COVID-19-Associated Hospitalizations	53	51	69	81	3.24

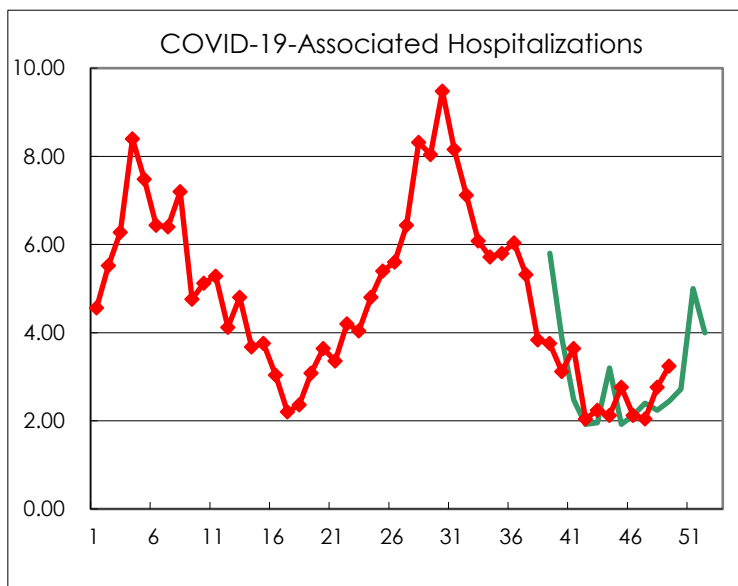
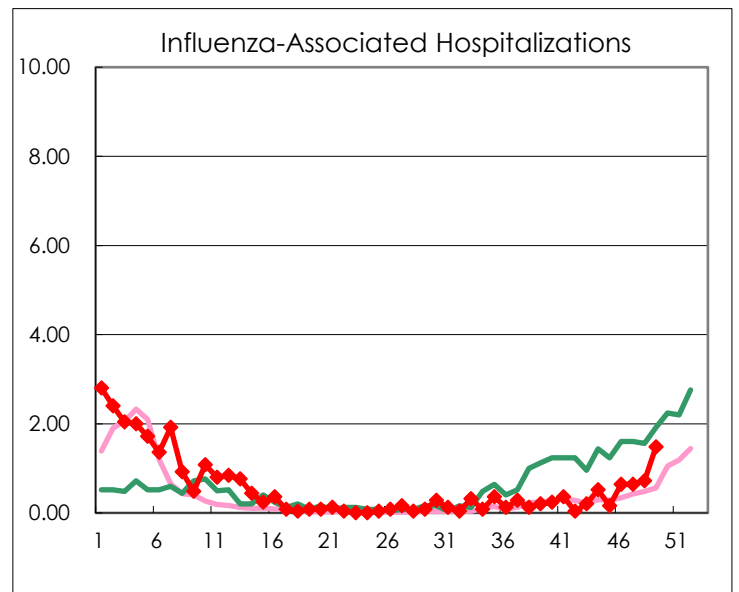
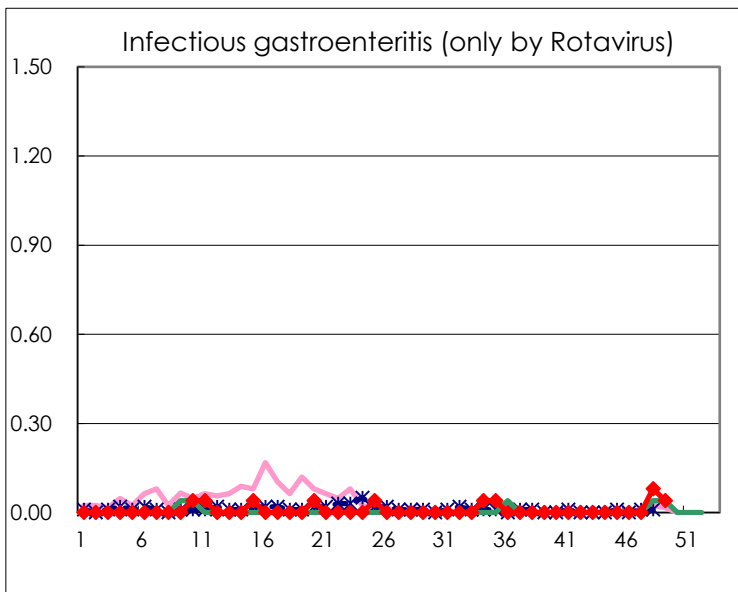
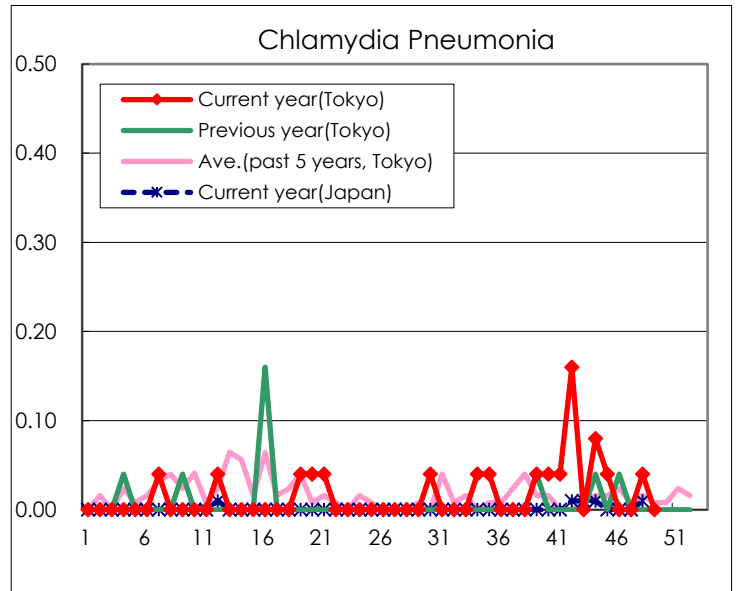
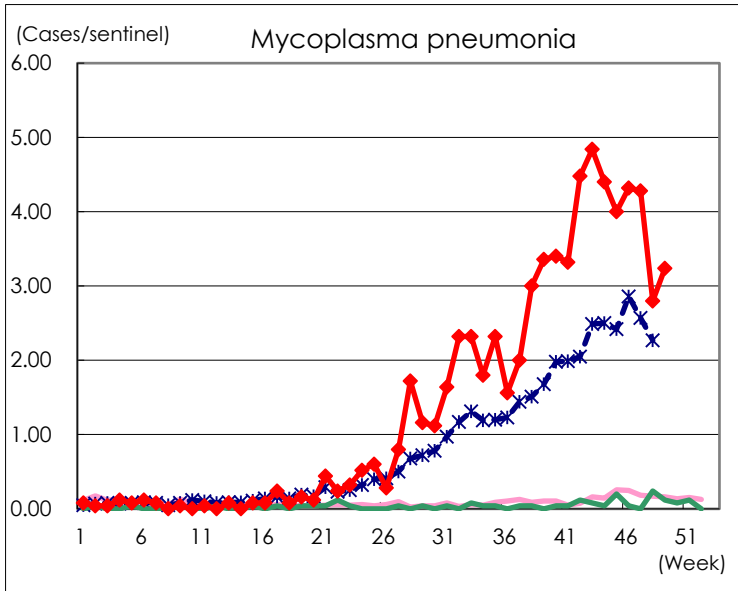
(Blank means 0.)

# Disease Trend Graph (weekly reported cases per sentinel in comparison)









Number of sentinel facilities for weekly reporting		
Types of sentinels	Number of sentinels	Sentinels having reported
Pediatric	264	264
Influenza COVID-19	419	418
Ophthalmic	39	39
Specially-designated	25	25