
INFECTIOUS DISEASES WEEKLY REPORT

TOKYO iDWR

Tokyo Metropolitan Infectious Disease Surveillance Center

19 December 2024 / Number 50
(12/9 ~ 12/15)

Surveillance System in Tokyo, Japan

The infectious diseases which all physicians must report
All physicians must report to health centers the incidence of the diseases which are shown at page one. Health centers electronically report the individual cases to Tokyo Metropolitan Infectious Disease Surveillance Center.

The infectious diseases required to be reported by the sentinels
The numbers of patients who visit the sentinel clinics or hospitals during a week are reported to health centers in Tokyo. And they electronically report the numbers to Tokyo Metropolitan Infectious Disease Surveillance Center. We have about 500 sentinel clinics and hospitals in Tokyo.

Tokyo Metropolitan Institute of Public Health

TEL:81-3-3363-3213 FAX:81-3-5332-7365

e-mail:tmiph@section.metro.tokyo.jp

URL:idsc.tmiph.metro.tokyo.lg.jp/

Number of patients with the diseases which all physicians must report

Category	Diseases	Tokyo				
		47th	48th	49th	50th	Cum 2024
I	Ebola hemorrhagic fever					
	Crimean-Congo hemorrhagic fever					
	Smallpox					
	South American hemorrhagic fever					
	Plague					
	Marburg disease					
	Lassa fever					
II	Acute poliomyelitis					
	Tuberculosis	36	55	46	41	2,061
	Diphtheria					
	Severe Acute Respiratory Syndrome(SARS)					
	Middle East Respiratory Syndrome (MERS)					
	Avian influenza H5N1					
Avian influenza H7N9						
III	Cholera					2
	Shigellosis			1	1	25
	Enterohemorrhagic Escherichia coli infection	11	6	10	1	462
	Typhoid fever				1	7
	Paratyphoid fever					3
IV	Hepatitis E		1	1	1	132
	West Nile fever					
	Hepatitis A	1			1	20
	Echinococcosis					1
	Mpox					14
	Yellow fever					
	Psittacosis					
	Omsk hemorrhagic fever					
	Relapsing fever					
	Kyasanur forest disease					
	Q fever					
	Rabies					
	Coccidioidomycosis					2
	Zika virus infection					
	Severe Fever with Thrombocytopenia Syndrome					
	Hemorrhagic fever with renal syndrome					
	Western equine encephalitis					
	Tick-borne encephalitis					
	Anthrax					
	Chikungunya fever	1	1			5
	Scrub typhus(Tsutsugamushi disease)				1	3
	Dengue fever			2		66
	Eastern equine encephalitis					
	Avian influenza (excluding H5N1 and H7N9)					
	Nipah virus infection					
	Japanese spotted fever					
	Japanese encephalitis		1			1
	Hantavirus pulmonary syndrome					
	Herpes B virus infection					
	Glanders					
	Brucellosis					
	Venezuelan equine encephalitis					
	Hendra virus infection					
Epidemic typhus						
Botulism						
Malaria					10	
Tularemia						
Lyme disease					1	
Lyssavirus infection(excluding rabies)						
Rift valley fever						
Melioidosis						
Legionellosis	9	5	7	2	255	
Leptospirosis					5	
Rocky mountain spotted fever						

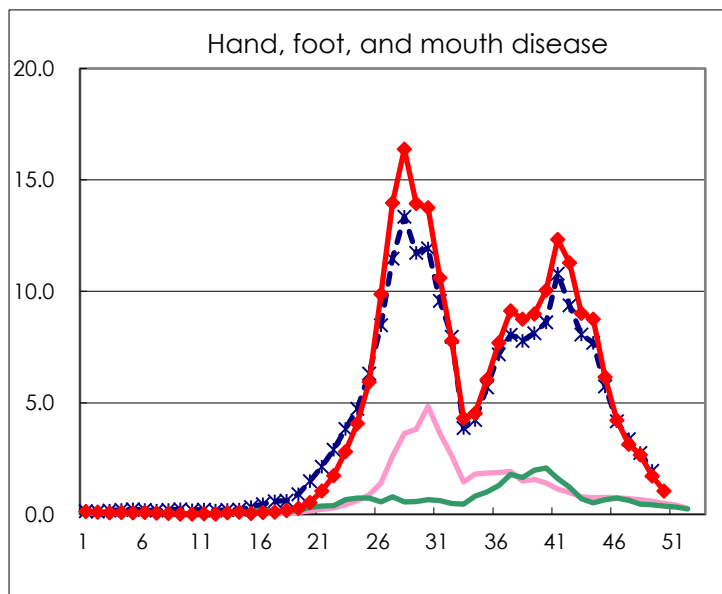
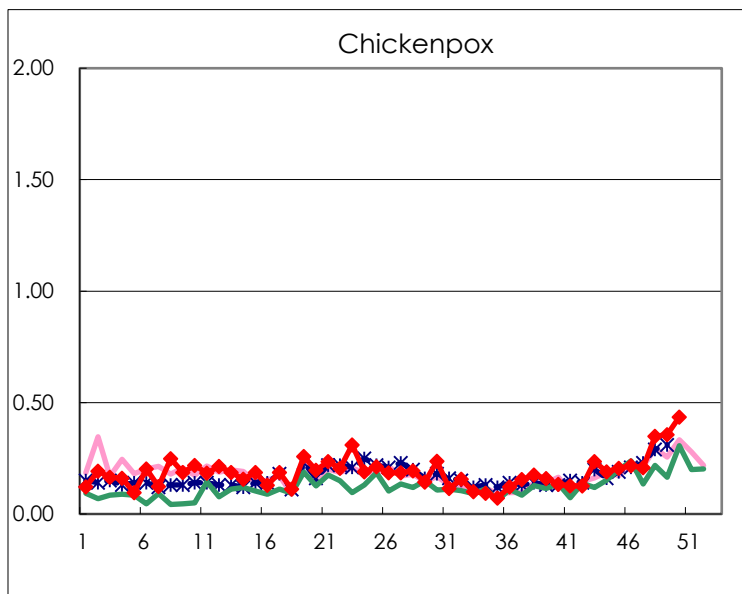
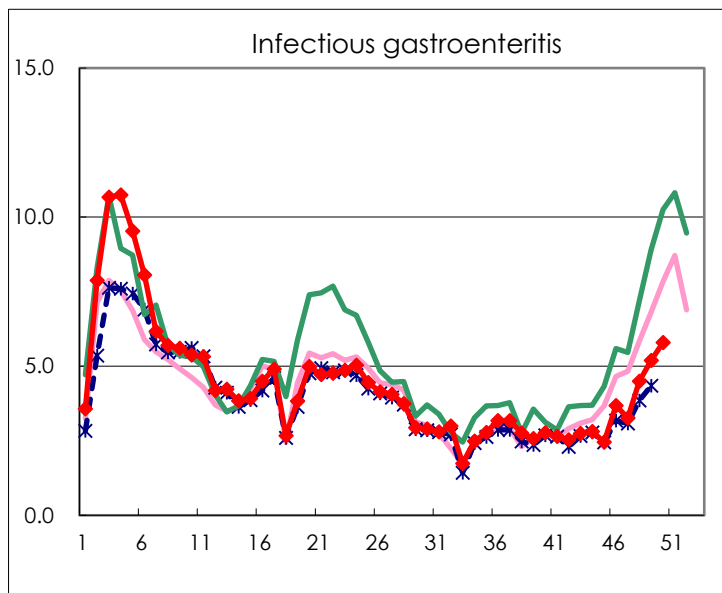
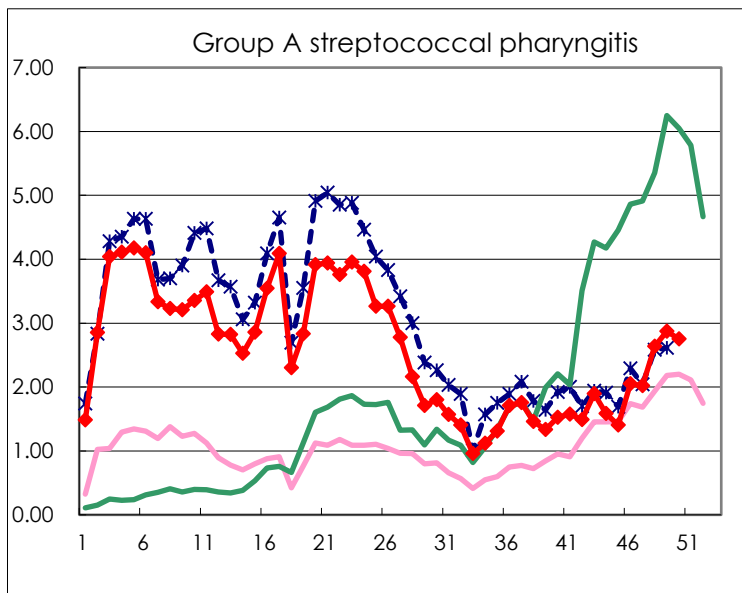
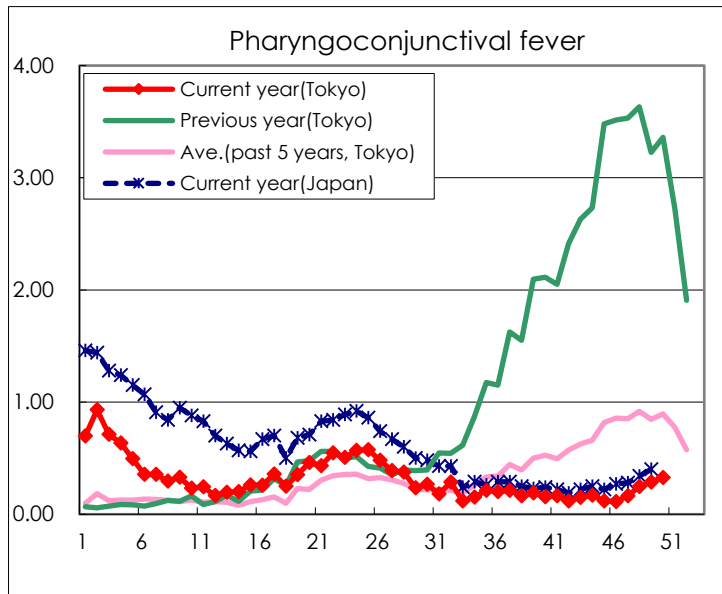
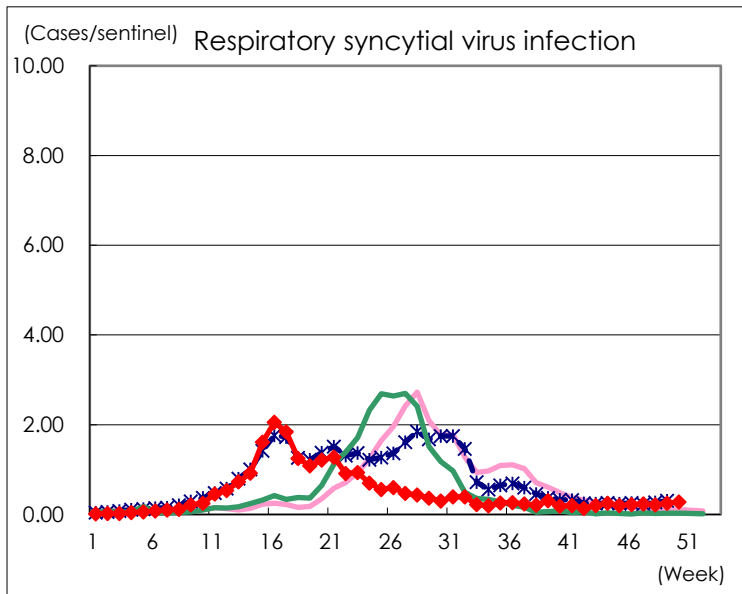
Category	Diseases	Tokyo				
		47th	48th	49th	50th	Cum 2024
V	Amebiasis	1		3	2	99
	Viral hepatitis(excluding hepatitis A and E)			4		41
	CRE infection	5	5	11	2	198
	Acute Flaccid Paralysis (excluding Acute poliomyelitis)		1			5
	Acute encephalitis(excluding JE and WNE)	3	1	2	2	46
	Cryptosporidiosis					14
	Creutzfeldt-Jakob disease		1			10
	Severe invasive streptococcal infections(TSLS)	2	2	7	2	237
	Acquired immunodeficiency syndrome (AIDS)	6	8	5	3	276
	Giardiasis	1			1	15
	Invasive <i>Haemophilus influenzae</i> disease	2	4	2		67
	Invasive meningococcal disease					10
	Invasive pneumococcal disease	6	9	6	8	254
	Varicella (limited to hospitalized case)		4	2	1	65
	Congenital rubella syndrome					
	Syphilis	69	63	80	72	3,631
	Disseminated cryptococcosis				1	20
	Tetanus				1	3
	Vancomycin-resistant <i>S. aureus</i> infection					
	Vancomycin-resistant <i>Enterococcus</i> infection					7
	Pertussis	21	17	15	17	358
	Rubella					1
Measles					10	
MDRA infection					1	

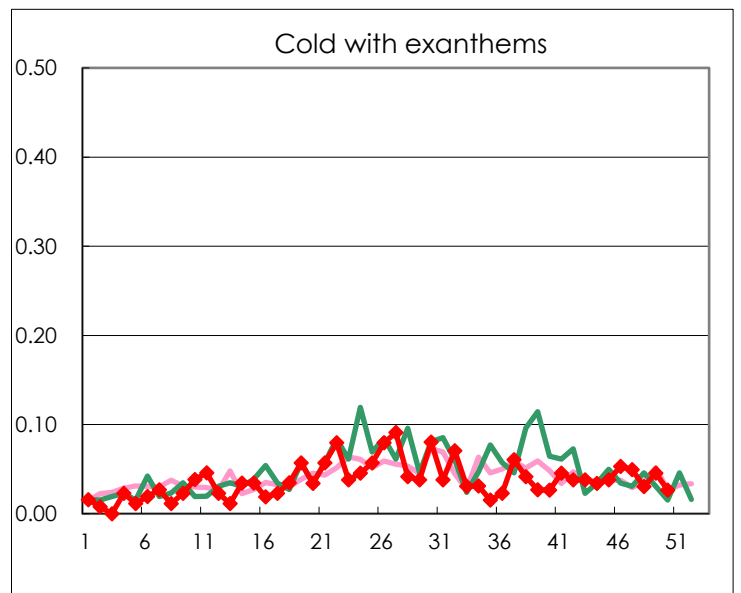
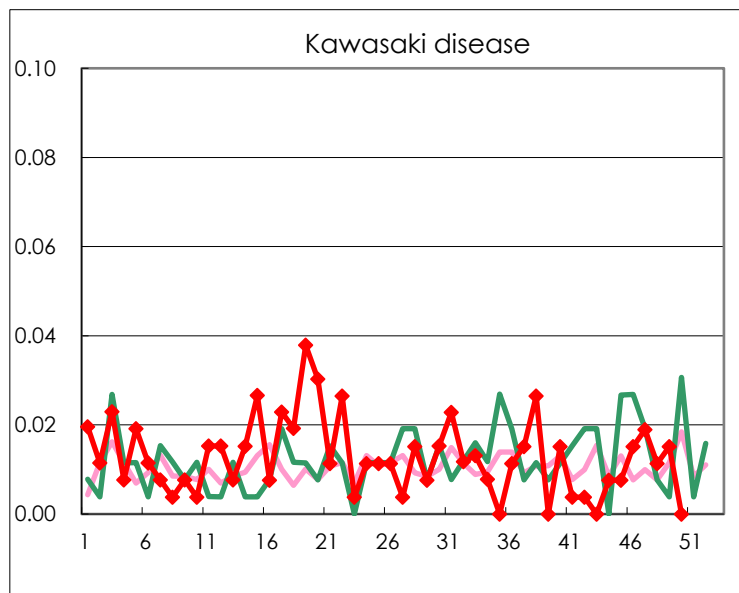
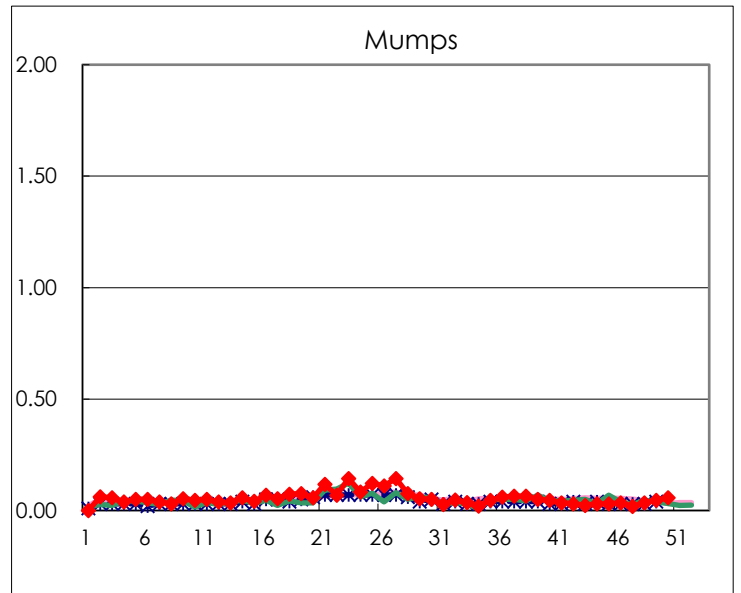
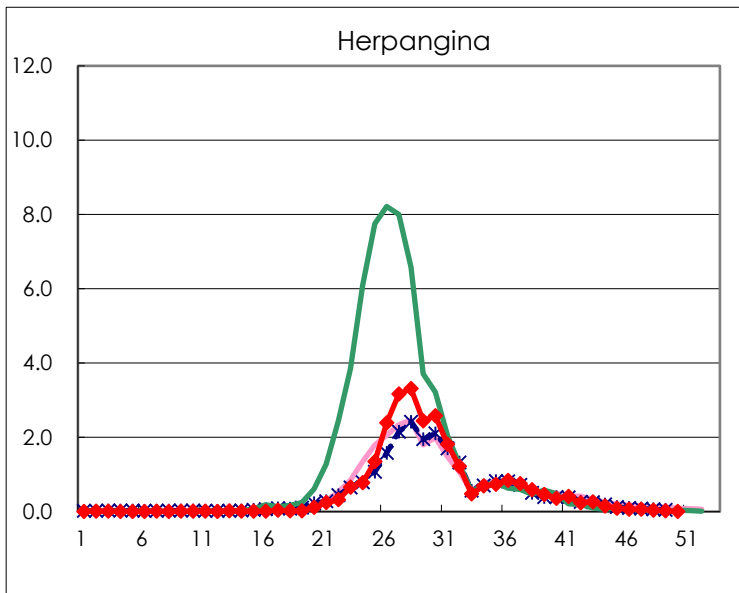
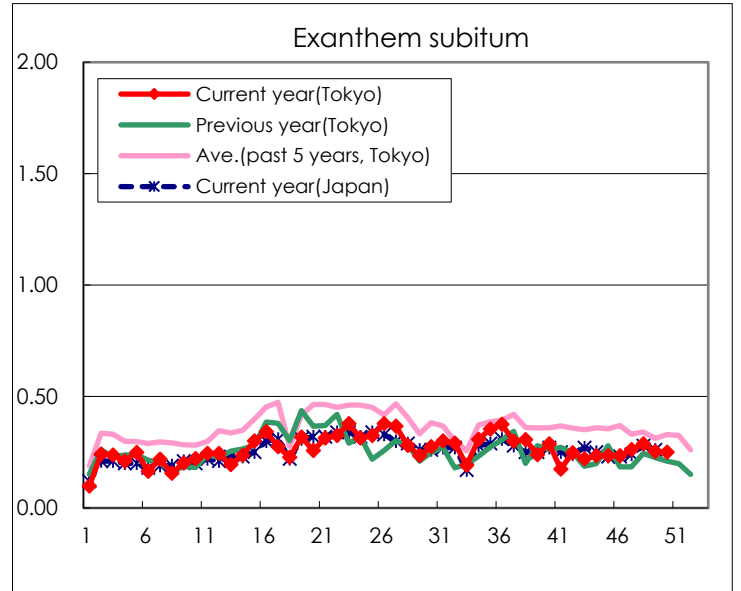
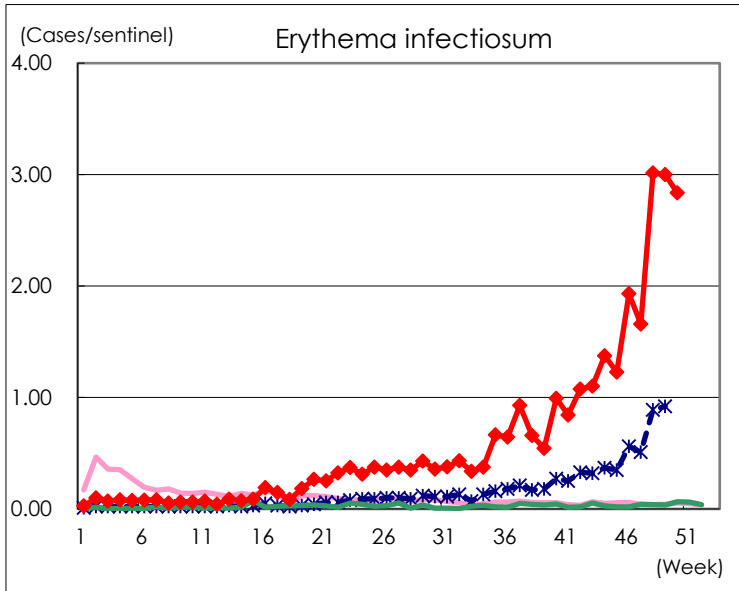
Number of patients with the diseases to be reported
by the designated clinics and hospitals

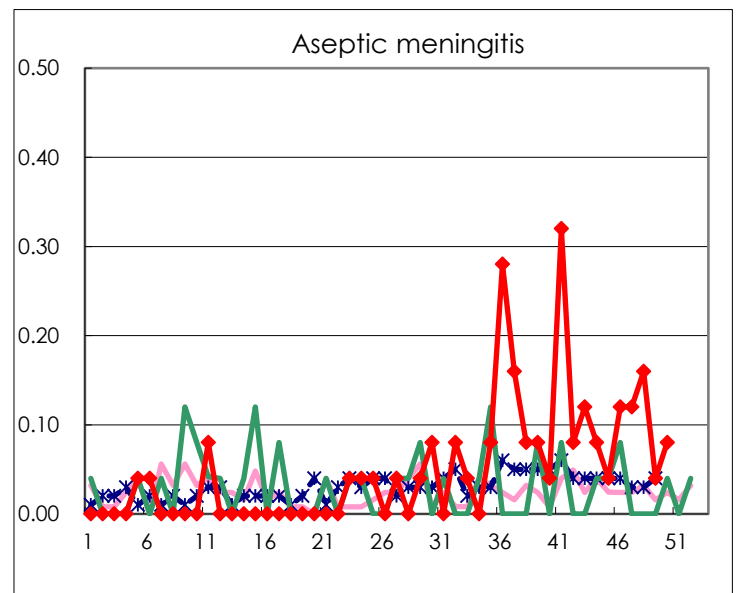
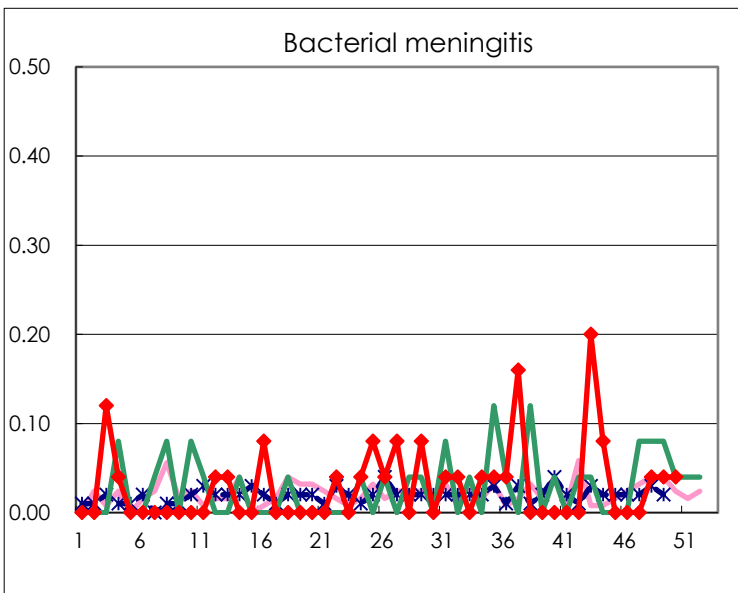
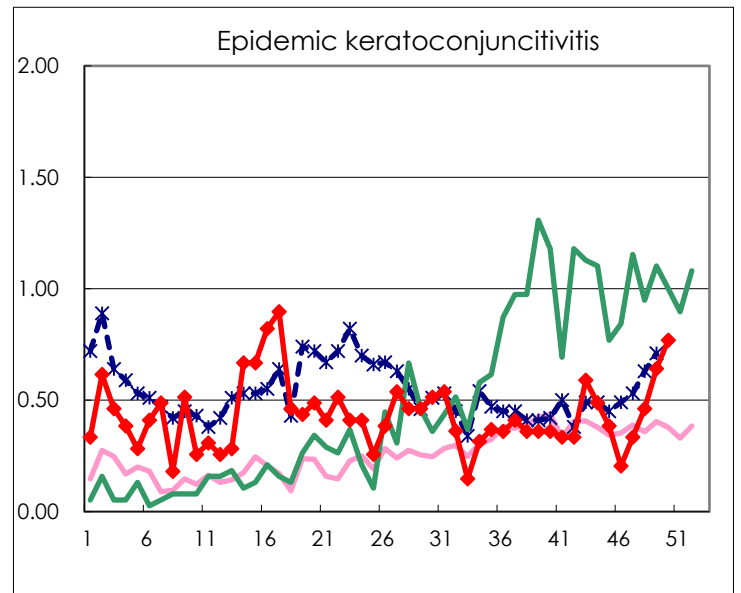
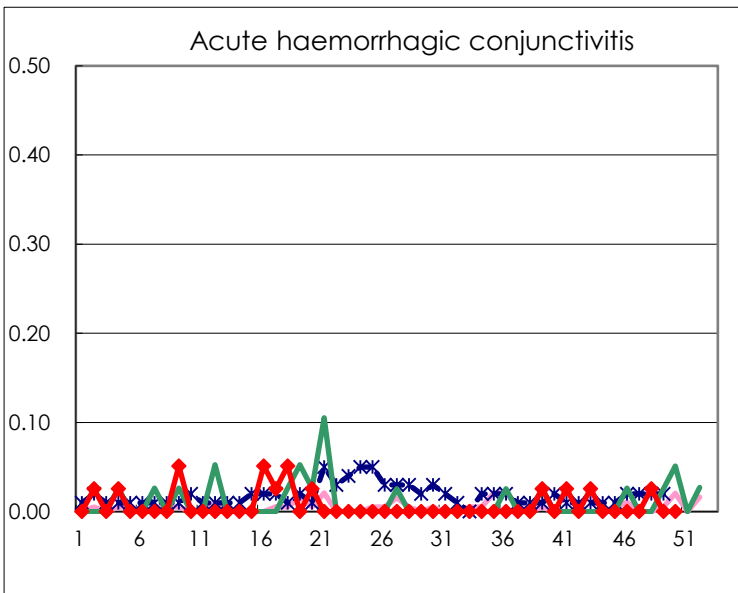
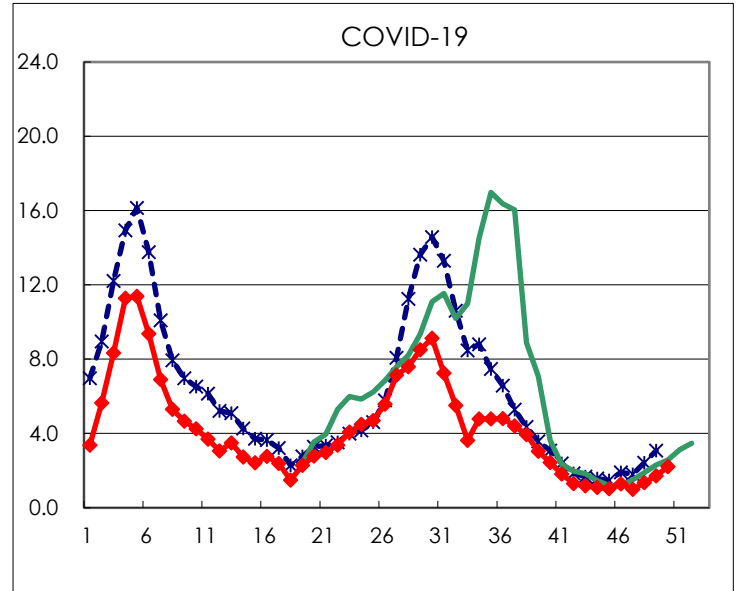
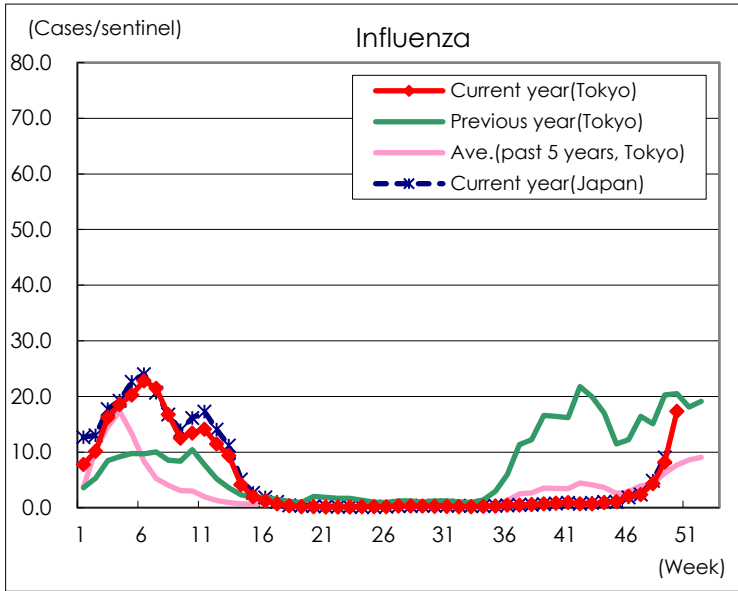
Diseases	Tokyo				
	47th	48th	49th	50th	/sentinel
Respiratory syncytial virus infection	62	57	66	74	0.28
Pharyngoconjunctival fever	43	65	76	86	0.33
Group A streptococcal pharyngitis	534	696	759	726	2.75
Infectious gastroenteritis	861	1,186	1,372	1,530	5.80
Chickenpox	55	92	94	115	0.44
Hand, foot, and mouth disease	830	703	454	277	1.05
Erythema infectiosum	438	796	792	749	2.84
Exanthem subitum	69	76	67	66	0.25
Herpangina	17	10	5	2	0.01
Mumps	5	9	12	15	0.06
Kawasaki disease	5	3	4		
Cold with exanthems	13	8	12	7	0.03
Influenza	1,000	1,807	3,425	7,256	17.36
COVID-19	415	566	719	924	2.21
Acute hemorrhagic conjunctivitis		1			
Epidemic keratoconjunctivitis	13	18	25	30	0.77
Bacterial meningitis		1	1	1	0.04
Aseptic meningitis	3	4	1	2	0.08
<i>Mycoplasma pneumoniae</i>	107	70	81	63	2.52
Chlamydial pneumonia (excluding <i>psittacosis</i>)		1			
Infectious gastroenteritis (only by Rotavirus)		2	1	1	0.04
Influenza-Associated Hospitalizations	16	18	37	97	3.88
COVID-19-Associated Hospitalizations	51	69	81	79	3.16

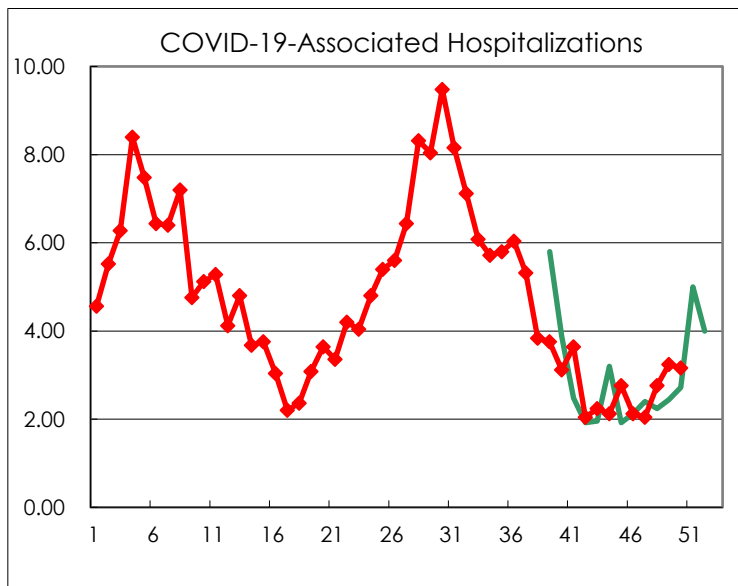
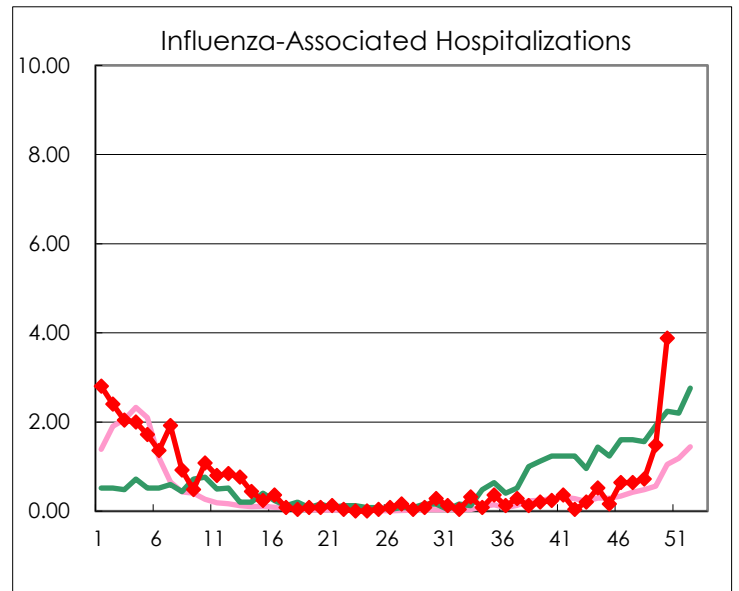
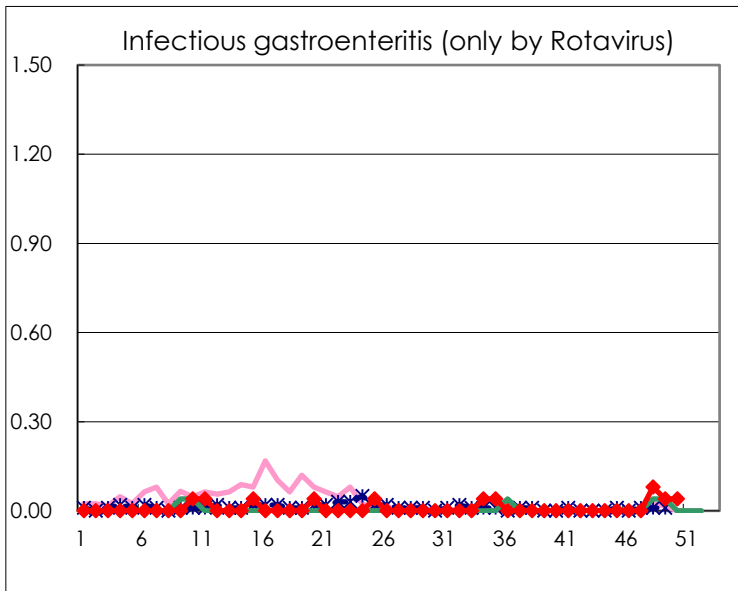
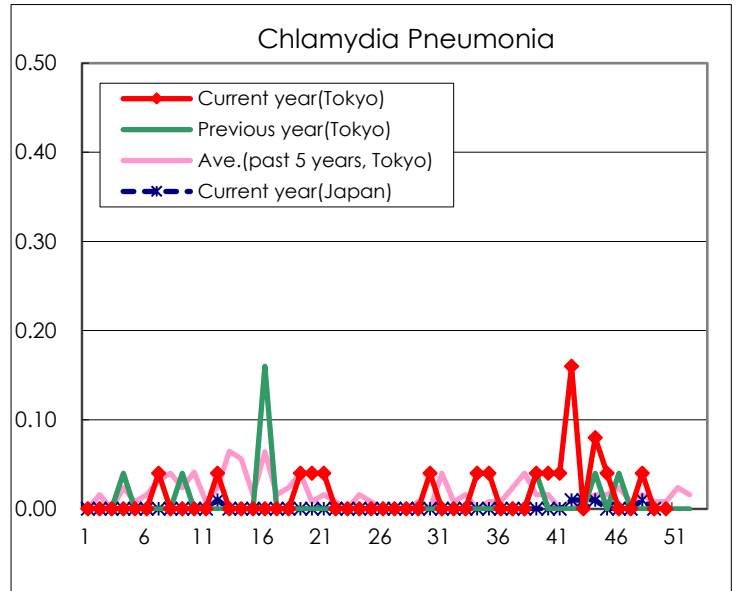
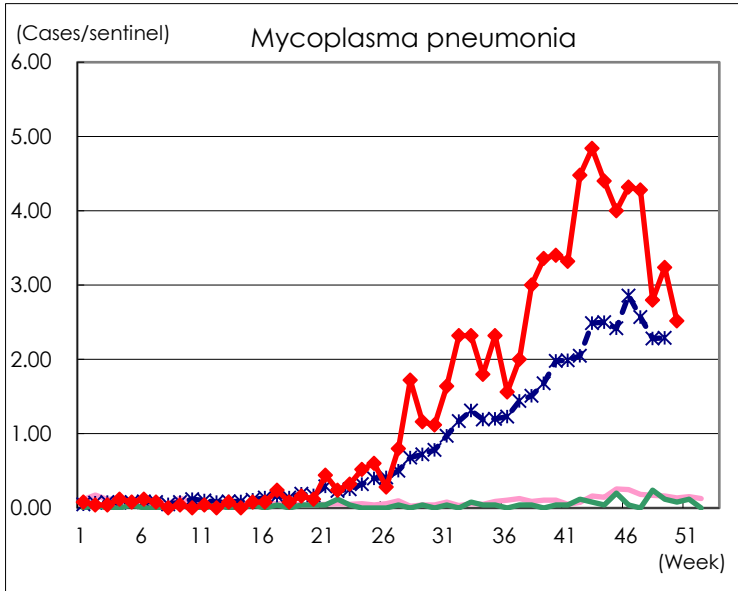
(Blank means 0.)

Disease Trend Graph (weekly reported cases per sentinel in comparison)









Number of sentinel facilities for weekly reporting		
Types of sentinels	Number of sentinels	Sentinels having reported
Pediatric	264	264
Influenza COVID-19	419	418
Ophthalmic	39	39
Specially-designated	25	25