

2024年12月26日 / 51号
12月16日 - 12月22日

东京传染病监控系统

所有医生均必须上报的传染病

医生必须向卫生所通报发生该疾病。卫生所则向東京都传染病信息中心报告个别案例。

定点医疗机构上报的传染病

由定点诊所或医院每周向卫生所上报来访患者数量。卫生所则向東京都传染病信息中心报告患者总数。東京都内约有500家定点诊所与医院。

東京都健康安全研究中心

TEL:81-3-3363-3213 FAX:81-3-5332-7365

e-mail:tmiph@section.metro.tokyo.jp

URL:idscc.tmiph.metro.tokyo.lg.jp/

全数掌握对象疾病 上报数量

类别	疾病	Diseases	东京				
			第48周	第49周	第50周	第51周	2024年累计
I	埃博拉出血热	Ebola hemorrhagic fever					
	克里米亚 - 刚果出血热	Crimean-Congo hemorrhagic fever					
	天花	Smallpox					
	南美出血热	South American hemorrhagic fever					
	鼠疫	Plague					
	马尔堡出血热	Marburg disease					
	拉萨热	Lassa fever					
II	脊髓灰质炎 (小儿麻痹)	Acute poliomyelitis					
	结核病	Tuberculosis	56	46	40	41	2,101
	白喉	Diphtheria					
	严重急性呼吸系统综合征 (SARS)	Severe Acute Respiratory Syndrome (SARS)					
	中东呼吸综合征	Middle East Respiratory Syndrome (MERS)					
	禽流感 (H5N1)	Avian influenza H5N1					
	禽流感 (H7N9)	Avian influenza H7N9					
III	霍乱	Cholera					2
	细菌性痢疾	Shigellosis		1	1		25
	肠道出血性大肠杆菌感染症	Enterohemorrhagic Escherichia coli infection	6	10	1	6	468
	伤寒	Typhoid fever			1		7
	副伤寒	Paratyphoid fever				1	4
IV	E型肝炎	Hepatitis E	1	1	1	2	134
	西尼罗热	West Nile fever					
	A型肝炎	Hepatitis A			1	1	21
	棘球蚴病	Echinococcosis					1
	Mpox	Mpox					14
	黄热病	Yellow fever					
	鹦鹉热	Psittacosis					
	鄂木斯克出血热	Omsk hemorrhagic fever					
	回归热	Relapsing fever					
	夸赛纳森林病 (Kysanur forest disease)	Kysanur forest disease					
	Q型流感	Q fever					
	狂犬病	Rabies					
	球孢子菌病	Coccidioidomycosis					2
	兹卡病毒感染症	Zika virus infection					
	发热伴血小板减少综合征	Severe Fever with Thrombocytopenia Syndrome					
	肾综合征出血热	Hemorrhagic fever with renal syndrome					
	西部马脑炎	Western equine encephalitis					
	蜱媒脑炎	Tick-borne encephalitis					
	炭疽病	Anthrax					
	屈公病	Chikungunya fever	1				5
	恙虫病	Scrub typhus (Tsumugamushi disease)			1	2	5
	登革热	Dengue fever		2		2	68
	东部马脑炎	Eastern equine encephalitis					
	禽流感 (除H5N1、H7N9以外)	Avian influenza (excluding H5N1 and H7N9)					
	立百病毒感染症	Nipah virus infection					
	日本红斑热	Japanese spotted fever					
	日本脑炎	Japanese encephalitis	1				1
	汉坦病毒肺综合征	Hantavirus pulmonary syndrome					
	猴疱疹	Herpes B virus infection					
	马鼻疽	Glanders					
	布鲁氏杆菌病	Brucellosis					
	委内瑞拉马脑炎 (Venezuelan equine encephalitis)	Venezuelan equine encephalitis					
	亨德拉病毒感染症	Hendra virus infection					
	斑疹伤寒	Epidemic typhus					
	肉毒杆菌中毒	Botulism					
	疟疾	Malaria					10
	兔热病	Tularemia					
	莱姆病	Lyme disease					1
	丽沙病毒感染症	Lyssavirus infection (excluding rabies)					
	裂谷热	Rift valley fever					
类鼻疽	Melioidosis						
退伍军人症	Legionellosis	5	8	2	2	259	
钩端螺旋体病	Leptospirosis					5	
落基山斑疹热	Rocky mountain spotted fever						

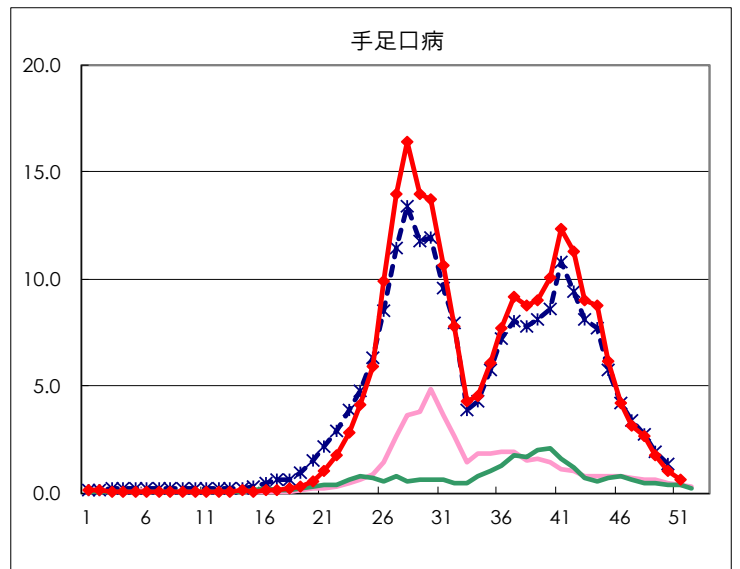
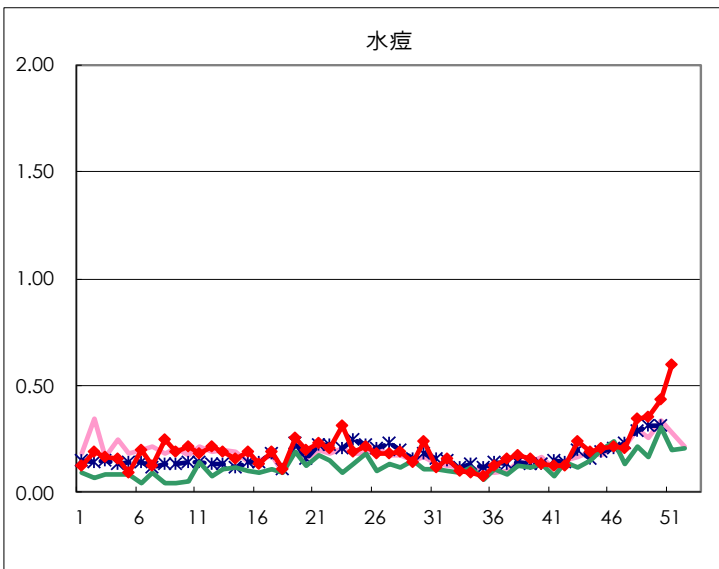
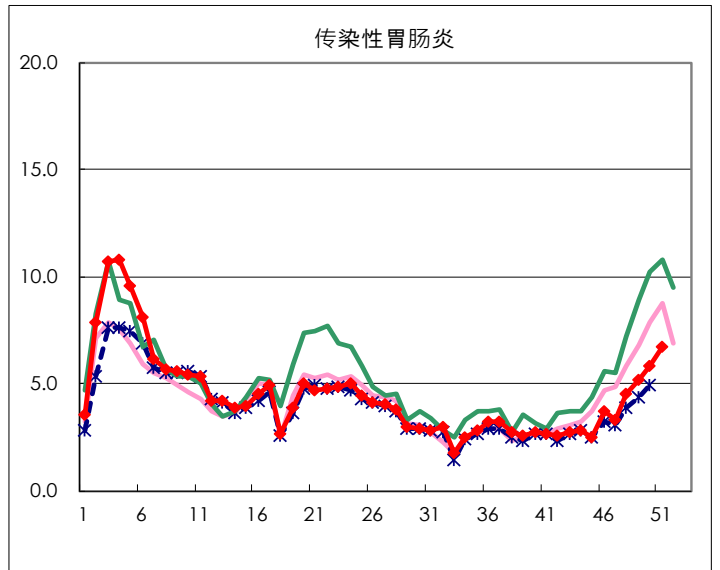
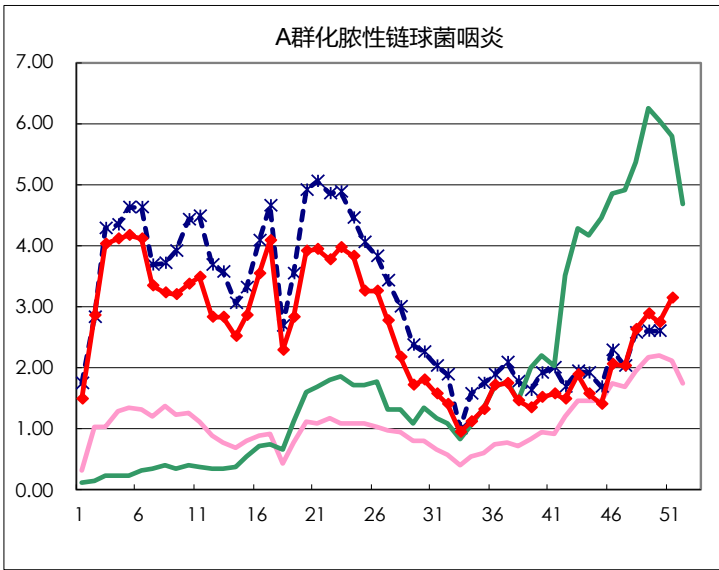
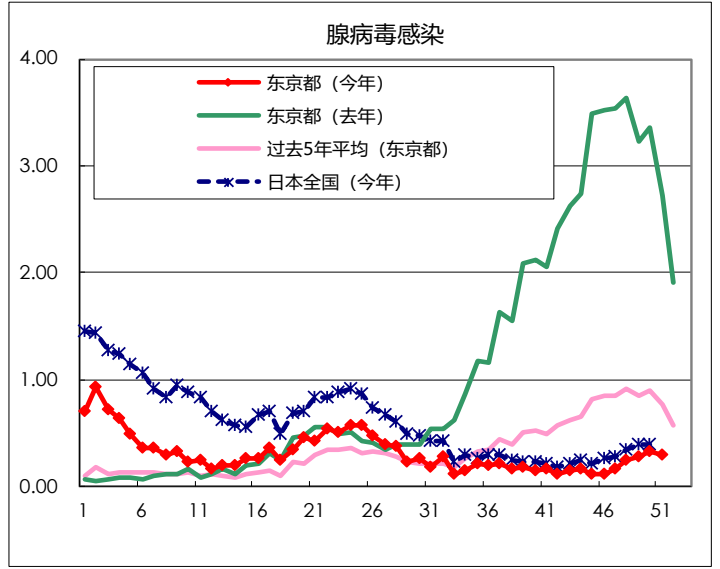
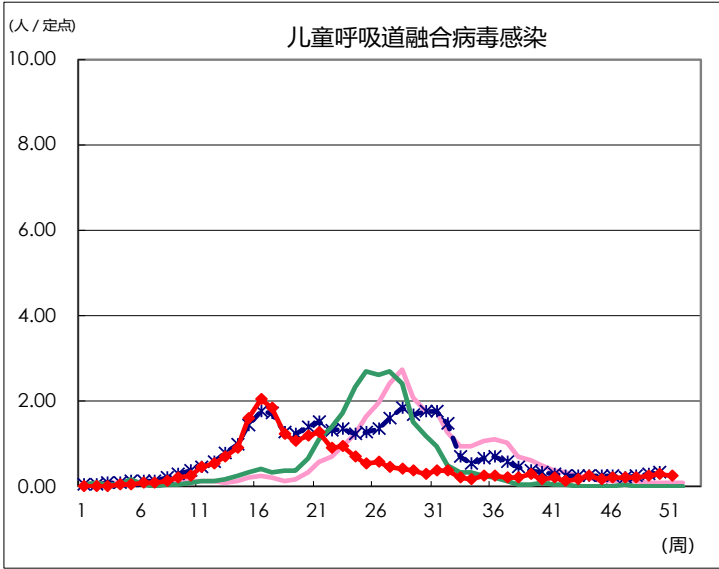
类别	疾病	Diseases	东京				
			第48周	第49周	第50周	第51周	2024年累计
V	阿米巴痢疾	Amebiasis		3	2		99
	病毒性肝炎 (除A型、E型以外)	Viral hepatitis (excluding hepatitis A and E)		4		1	42
	CRE infection	CRE infection	5	11	2	1	199
	Acute Flaccid Paralysis (excluding Acute poliomyelitis)	Acute Flaccid Paralysis (excluding Acute poliomyelitis)	1				5
	急性脑炎	Acute encephalitis (excluding JE and WNE)	1	2	2	4	50
	隐孢子虫症	Cryptosporidiosis					14
	库贾氏病	Creutzfeldt-Jakob disease	1				10
	酿脓链球菌 (Streptococcus pyogenes) 感染症	Severe invasive streptococcal infections (TSLs)	2	7	3	2	240
	后天免疫缺陷综合症	Acquired immunodeficiency syndrome (AIDS)	8	5	3	6	282
	贾第虫病	Giardiasis			1		15
	侵袭性嗜血杆菌感染症	Invasive <i>Haemophilus influenzae</i> disease	4	2		1	68
	侵袭性脑膜炎感染症	Invasive meningococcal disease					10
	侵袭性肺炎链球菌感染症	Invasive pneumococcal disease	9	6	10	11	267
	水痘 (仅限住院病例)	Varicella (limited to hospitalized case)	4	2	1	1	66
	先天性德国麻疹综合症	Congenital rubella syndrome					
	梅毒	Syphilis	63	81	77	43	3,680
	播散性隐球菌症	Disseminated cryptococcosis			1		20
	破伤风	Tetanus			1		3
	万古霉素耐药金黄色葡萄球菌 (Vancomycin-resistant <i>Staphylococcus aureus</i> , VRSA) 感染症	Vancomycin-resistant <i>S. aureus</i> infection					
	万古霉素抗性肠球菌 (Vancomycin-Resistant Enterococci, VRE) 感染症	Vancomycin-resistant Enterococcus infection					7
	百日咳	Pertussis	17	15	17	16	374
德国麻疹	Rubella					1	
麻疹	Measles					10	
抗药性不动杆菌感染症	MDRA infection					1	

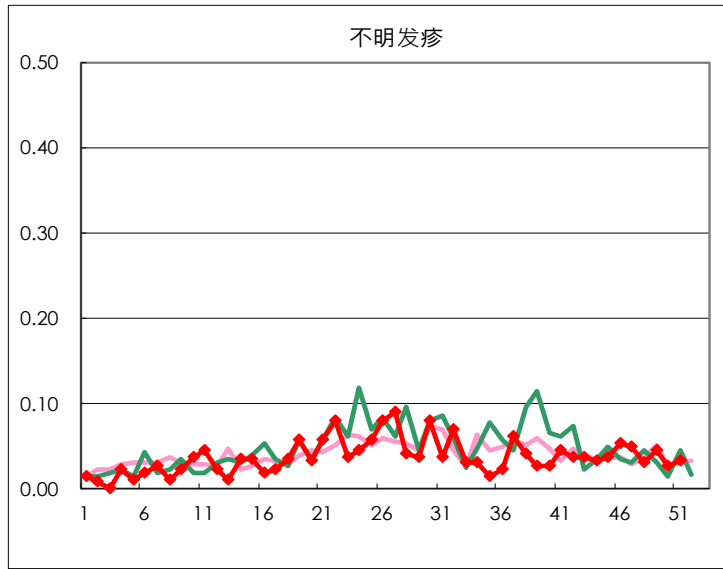
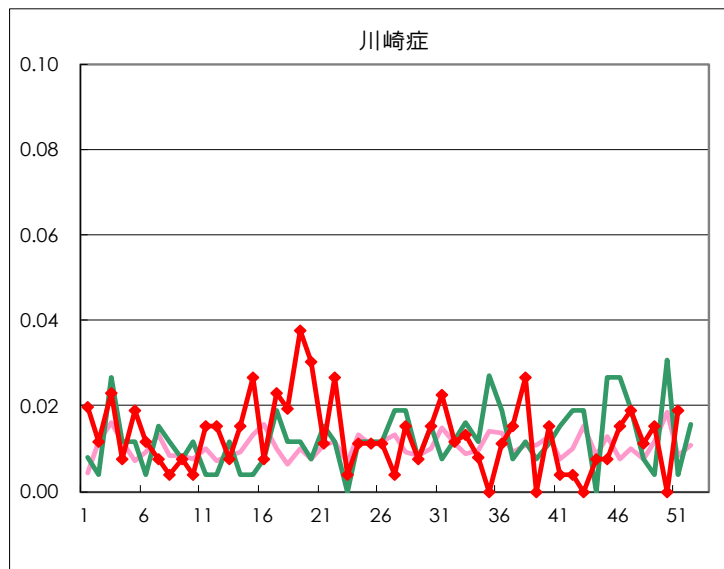
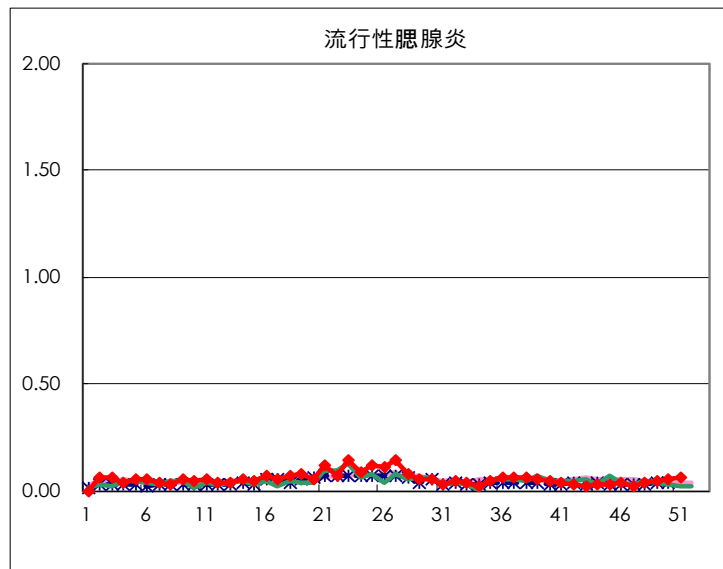
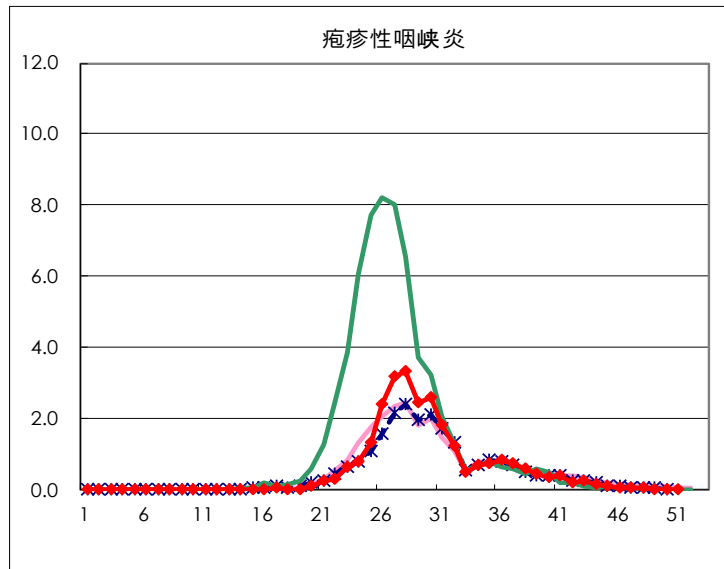
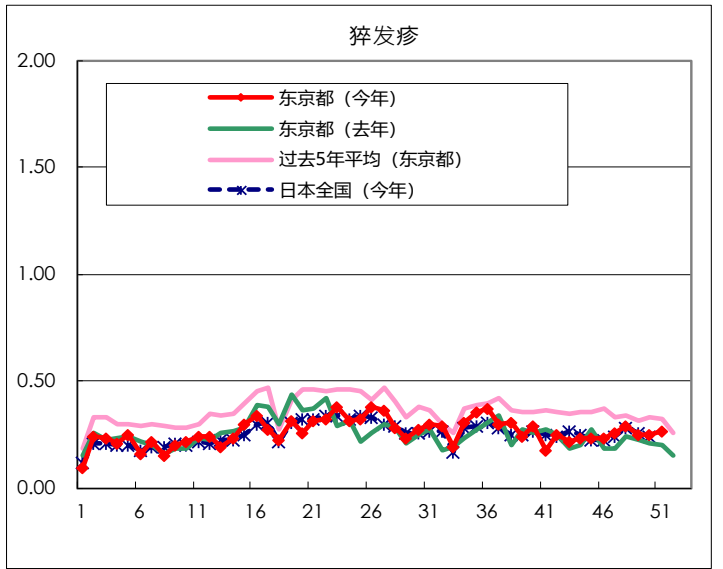
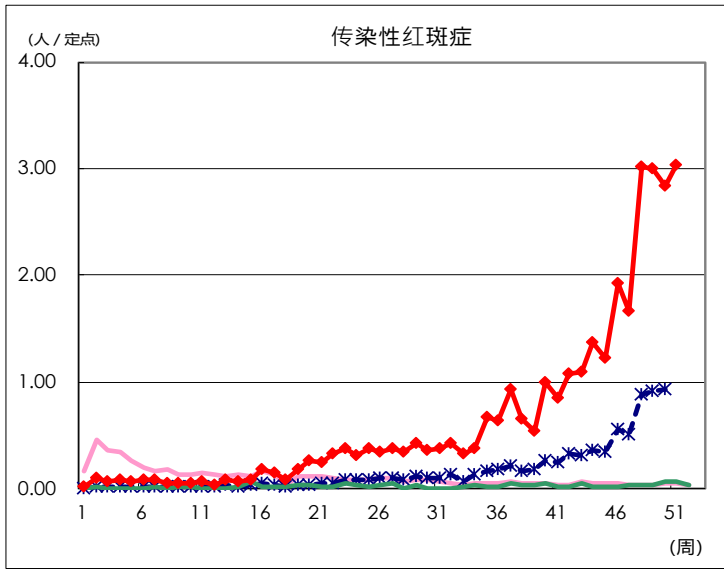
定点掌握对象疾病报告数量

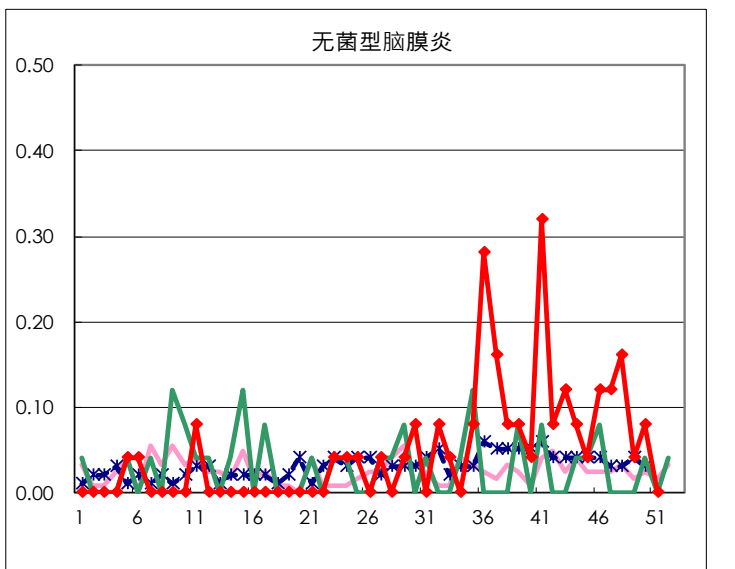
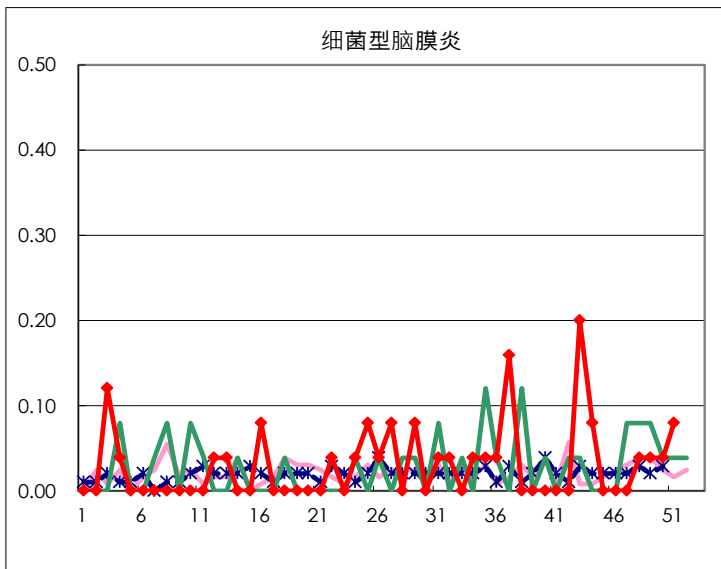
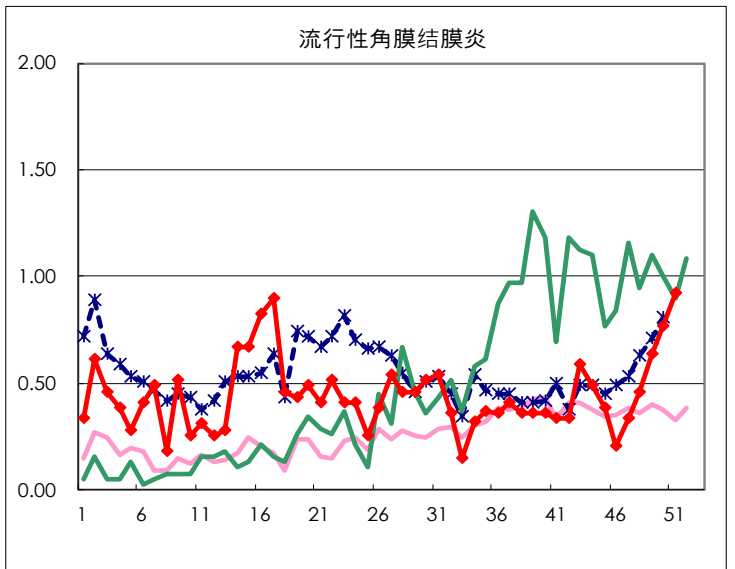
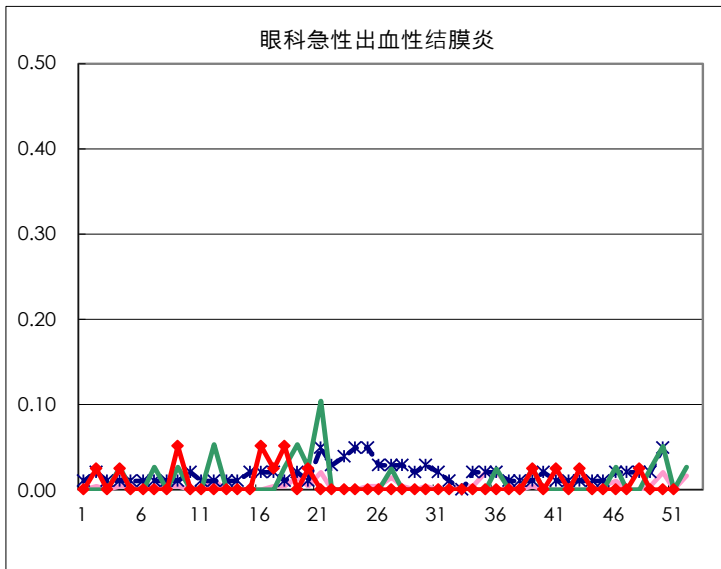
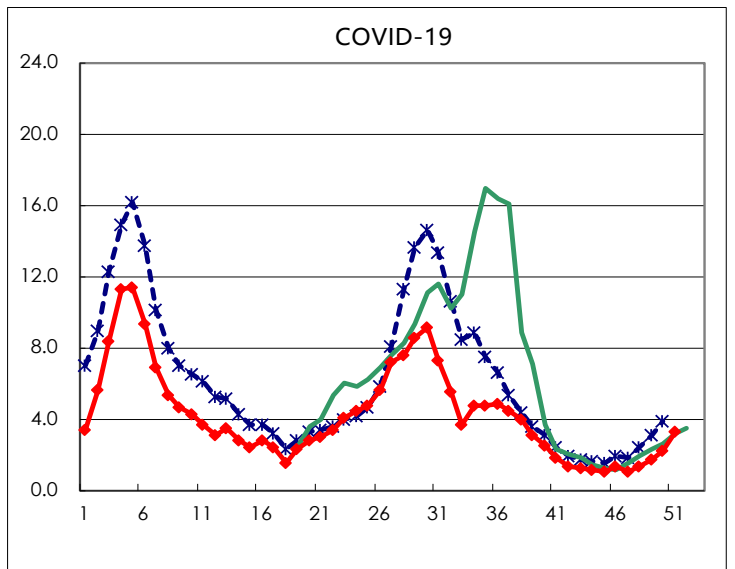
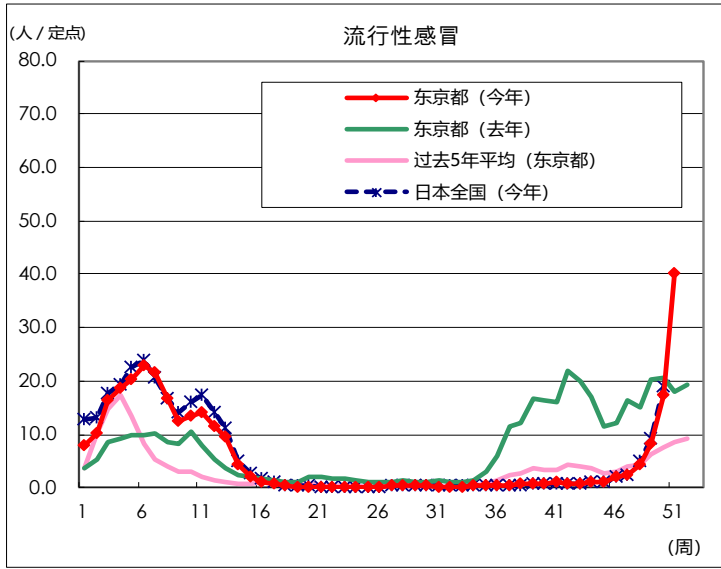
疾病	Diseases	东京				
		第48周	第49周	第50周	第51周	每哨兵
儿童呼吸道融合病毒感染	Respiratory syncytial virus infection	57	66	74	71	0.27
腺病毒感染	Pharyngoconjunctival fever	65	76	86	80	0.30
A群化脓性链球菌咽炎	Group A streptococcal pharyngitis	696	759	726	827	3.13
传染性胃肠炎	Infectious gastroenteritis	1,186	1,372	1,530	1,783	6.75
水痘	Chickenpox	92	94	115	157	0.59
手足口病	Hand, foot, and mouth disease	703	454	277	170	0.64
传染性红斑症	Erythema infectiosum	796	792	749	801	3.03
猝发疹	Exanthem subitum	76	67	66	70	0.27
疱疹性咽峡炎	Herpangina	10	5	2	4	0.02
流行性腮腺炎	Mumps	9	12	15	17	0.06
川崎症	Kawasaki disease	3	4		5	0.02
不明发疹	Cold with exanthems	8	12	7	9	0.03
流行性感胃	Influenza	1,807	3,425	7,256	16,727	40.02
COVID-19	COVID-19	566	719	924	1,379	3.30
眼科急性出血性结膜炎	Acute hemorrhagic conjunctivitis	1				
流行性角膜结膜炎	Epidemic keratoconjunctivitis	18	25	30	36	0.92
细菌型脑膜炎	Bacterial meningitis	1	1	1	2	0.08
无菌型脑膜炎	Aseptic meningitis	4	1	2		
霉浆菌肺炎	Mycoplasma pneumonia	70	81	63	47	1.88
披衣菌肺炎 (除鹦鹉病外)	Chlamydial pneumonia (excluding psittacosis)	1			2	0.08
感染性肠胃炎 (轮状病毒)	Infectious gastroenteritis (only by Rotavirus)	2	1	1	1	0.04
流行性感胃住院	Influenza-Associated Hospitalizations	18	37	97	234	9.36
COVID-19-Associated Hospitalizations	COVID-19-Associated Hospitalizations	69	81	79	96	3.84

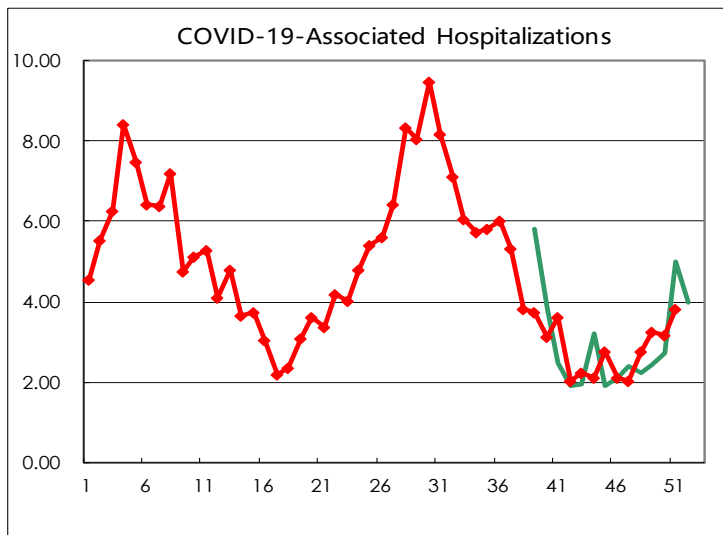
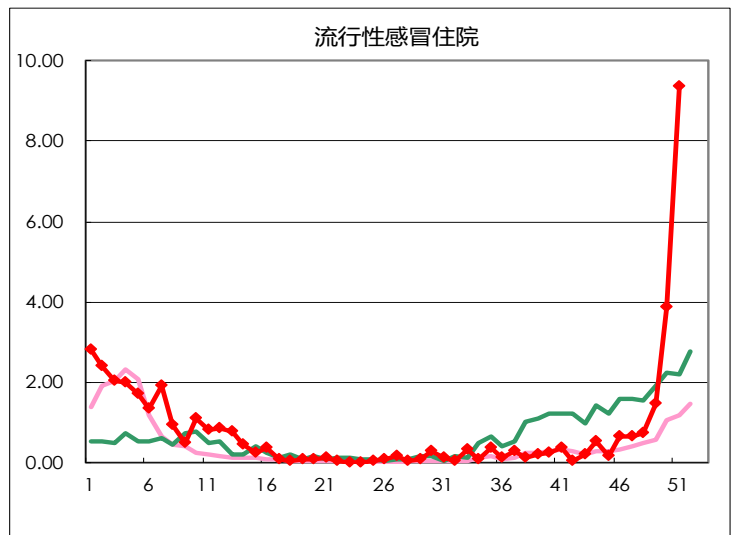
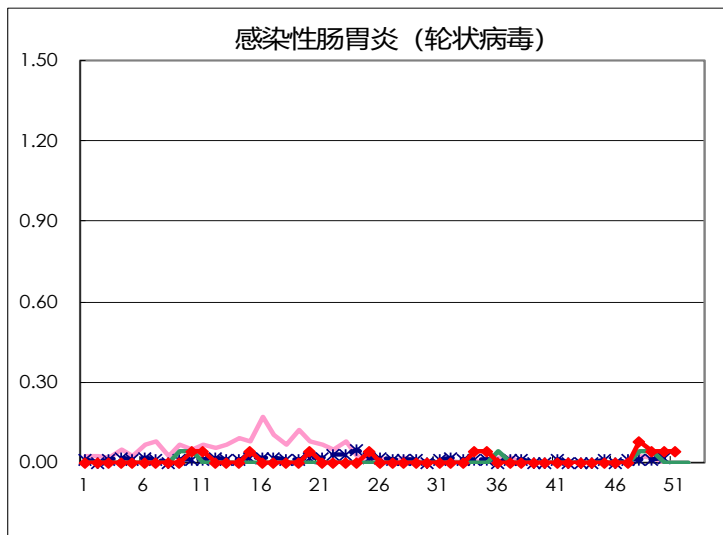
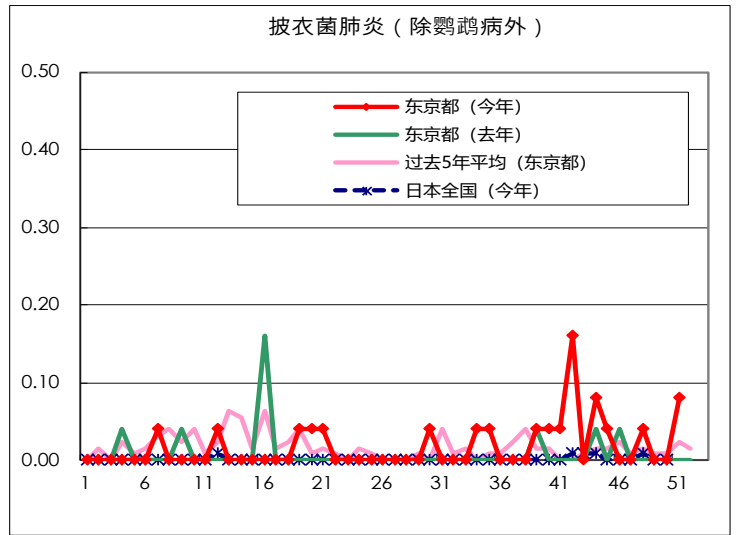
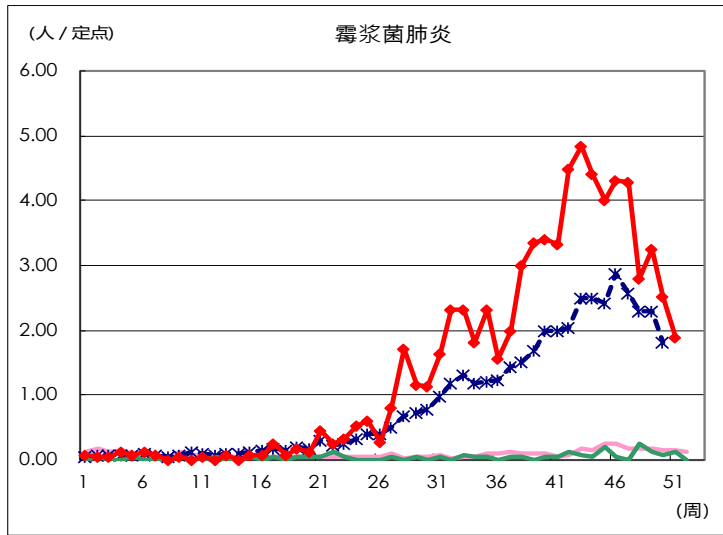
(空白为0)

定点掌握对象疾病在每定点医疗机构的报告数量









每周报告的哨点设施数量

哨点的类型	定点医疗机构数量	报告医疗机构数量
小儿科的	264	264
流行性感冒 COVID-19	419	418
眼科	39	39
专门设计的	25	25