
传染病周报

TOKYO iDWR

東京都传染病信息中心

2025年1月8日 / 52号
12月23日 - 12月29日

东京传染病监控系统

所有医生均必须上报的传染病

医生必须向卫生所通报发生该疾病。卫生所则向東京都传染病信息中心报告个别案例。

定点医疗机构上报的传染病

由定点诊所或医院每周向卫生所上报来访患者数量。卫生所则向東京都传染病信息中心报告患者总数。东京都内约有500家定点诊所与医院。

東京都健康安全研究中心

TEL:81-3-3363-3213 FAX:81-3-5332-7365

e-mail:tmiph@section.metro.tokyo.jp

URL:idsctmiph.metro.tokyo.lg.jp/

全数掌握对象疾病 上报数量

类别	疾病	Diseases	东京				
			第49周	第50周	第51周	第52周	2024年累计
I	埃博拉出血热	Ebola hemorrhagic fever					
	克里米亚 - 刚果出血热	Crimean-Congo hemorrhagic fever					
	天花	Smallpox					
	南美出血热	South American hemorrhagic fever					
	鼠疫	Plague					
	马尔堡出血热	Marburg disease					
II	拉萨热	Lassa fever					
	脊髓灰质炎 (小儿麻痹)	Acute poliomyelitis					
	结核病	Tuberculosis	46	40	41	50	2,150
	白喉	Diphtheria					
	严重急性呼吸系统综合症 (SARS)	Severe Acute Respiratory Syndrome (SARS)					
	中东呼吸综合症	Middle East Respiratory Syndrome (MERS)					
III	禽流感 (H5N1)	Avian influenza H5N1					
	禽流感 (H7N9)	Avian influenza H7N9					
	霍乱	Cholera					2
	细菌性痢疾	Shigellosis	1	1			25
	肠道出血性大肠杆菌感染症	Enterohemorrhagic Escherichia coli infection	10	1	6	3	471
	伤寒	Typhoid fever		1			7
IV	副伤寒	Paratyphoid fever			1		4
	E型肝炎	Hepatitis E	1	1	3	6	141
	西尼罗热	West Nile fever					
	A型肝炎	Hepatitis A		1	1		21
	棘球蚴病	Echinococcosis					1
	Mpox	Mpox					14
	黄热病	Yellow fever					
	鹦鹉热	Psittacosis					
	鄂木斯克出血热	Omsk hemorrhagic fever					
	回归热	Relapsing fever					
	夸赛纳森林病 (Kyananur forest disease)	Kyasanur forest disease					
	Q型流感	Q fever					
	狂犬病	Rabies					
	球孢子菌病	Coccidioidomycosis					2
	兹卡病毒感染症	Zika virus infection					
	发热伴血小板减少综合症	Severe Fever with Thrombocytopenia Syndrome					
	肾综合症出血热	Hemorrhagic fever with renal syndrome					
	西部马脑炎	Western equine encephalitis					
	蜱媒脑炎	Tick-borne encephalitis					
	炭疽病	Anthrax					
	屈公病	Chikungunya fever					5
	恙虫病	Scrub typhus (Tsutsugamushi disease)		1	2		5
	登革热	Dengue fever	2		2	1	69
	东部马脑炎	Eastern equine encephalitis					
	禽流感 (除H5N1、H7N9以外)	Avian influenza (excluding H5N1 and H7N9)					
	立百病毒感染症	Nipah virus infection					
	日本红斑热	Japanese spotted fever					
	日本脑炎	Japanese encephalitis					1
	汉坦病毒肺综合症	Hantavirus pulmonary syndrome					
	猴疱疹	Herpes B virus infection					
	马鼻疽	Glanders					
	布鲁氏杆菌病	Brucellosis					
委内瑞拉马脑炎 (Venezuelan equine encephalitis)	Venezuelan equine encephalitis						
亨德拉病毒感染症	Hendra virus infection						
斑疹伤寒	Epidemic typhus						
肉毒杆菌中毒	Botulism						
疟疾	Malaria					10	
兔热病	Tularemia						
莱姆病	Lyme disease					1	
丽莎病毒感染症	Lyssavirus infection (excluding rabies)						
裂谷热	Rift valley fever						
类鼻疽	Melioidosis						
退伍军人症	Legionellosis	8	2	2	1	260	
钩端螺旋体病	Leptospirosis					5	
落基山斑疹热	Rocky mountain spotted fever						

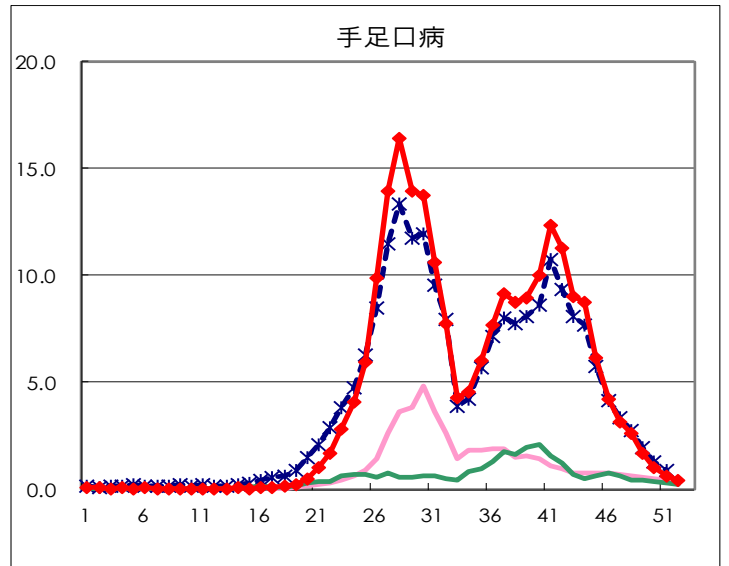
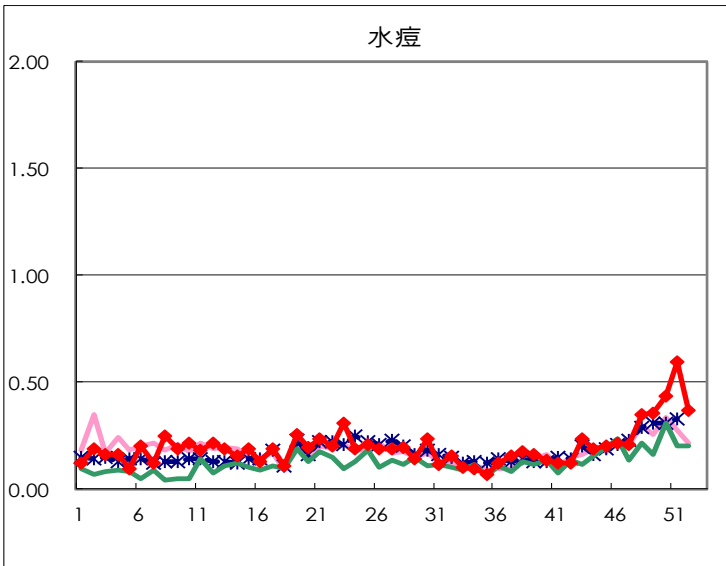
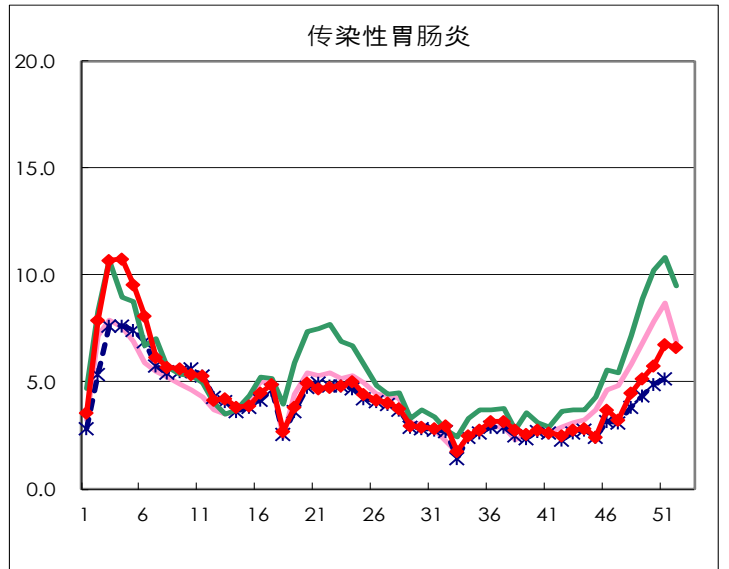
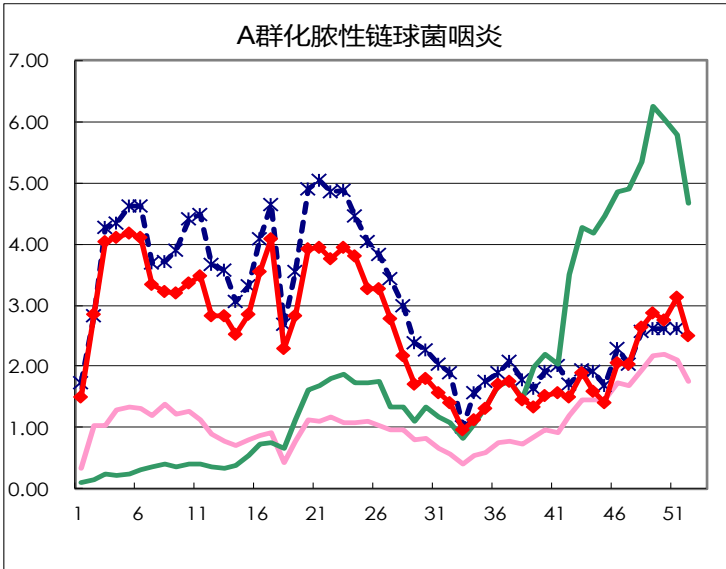
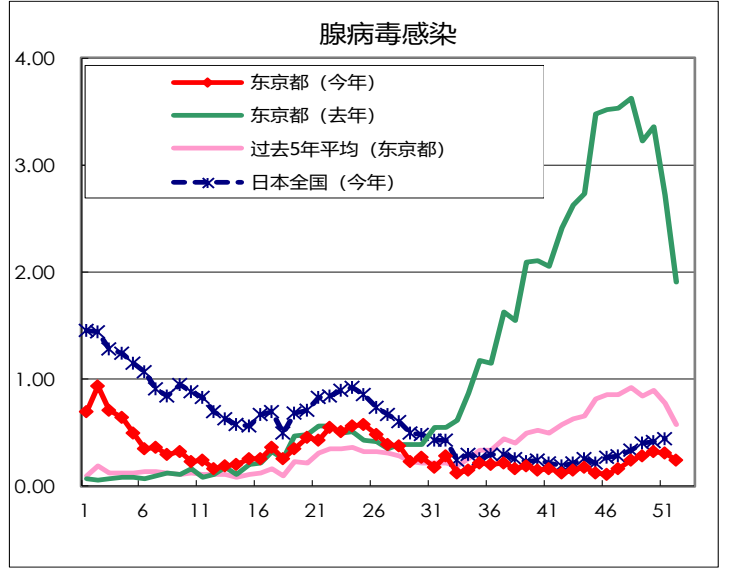
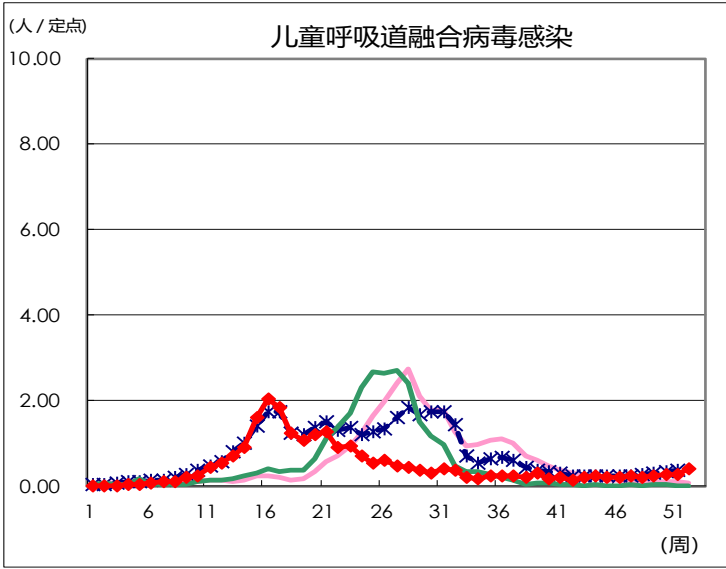
类别	疾病	Diseases	东京				
			第49周	第50周	第51周	第52周	2024年累计
V	阿米巴痢疾	Amebiasis	3	2		3	102
	病毒性肝炎 (除A型、E型以外)	Viral hepatitis (excluding hepatitis A and E)	4		1		42
	CRE infection	CRE infection	11	2	3	7	208
	Acute Flaccid Paralysis (excluding Acute poliomyelitis)	Acute Flaccid Paralysis (excluding Acute poliomyelitis)					5
	急性脑炎	Acute encephalitis (excluding JE and WNE)	2	2	4	4	54
	隐孢子虫病	Cryptosporidiosis					14
	库贾氏病	Creutzfeldt-Jakob disease					11
	酿脓链球菌 (Streptococcus pyogenes) 感染症	Severe invasive streptococcal infections (TSLs)	7	3	3	4	245
	后天免疫缺陷综合症	Acquired immunodeficiency syndrome (AIDS)	5	3	7	6	289
	贾第虫病	Giardiasis		1			15
	侵袭性嗜血杆菌感染症	Invasive <i>Haemophilus influenzae</i> disease	2		1	2	70
	侵袭性脑膜炎感染症	Invasive meningococcal disease					10
	侵袭性肺炎链球菌感染症	Invasive pneumococcal disease	6	11	11	12	280
	水痘 (仅限住院病例)	Varicella (limited to hospitalized case)	2	1	1	1	67
	先天性德国麻疹综合症	Congenital rubella syndrome					
	梅毒	Syphilis	82	77	53	56	3,748
	播散性隐球菌症	Disseminated cryptococcosis		1			20
	破伤风	Tetanus		1			3
	万古霉素耐药金黄色葡萄球菌 (Vancomycin-resistant <i>Staphylococcus aureus</i> , VRSA) 感染症	Vancomycin-resistant <i>S. aureus</i> infection					
	万古霉素抗性肠球菌 (Vancomycin-Resistant Enterococci, VRE) 感染症	Vancomycin-resistant Enterococcus infection					7
百日咳	Pertussis	15	17	16	21	395	
德国麻疹	Rubella					1	
麻疹	Measles					10	
抗药性不动杆菌感染症	MDRA infection					1	

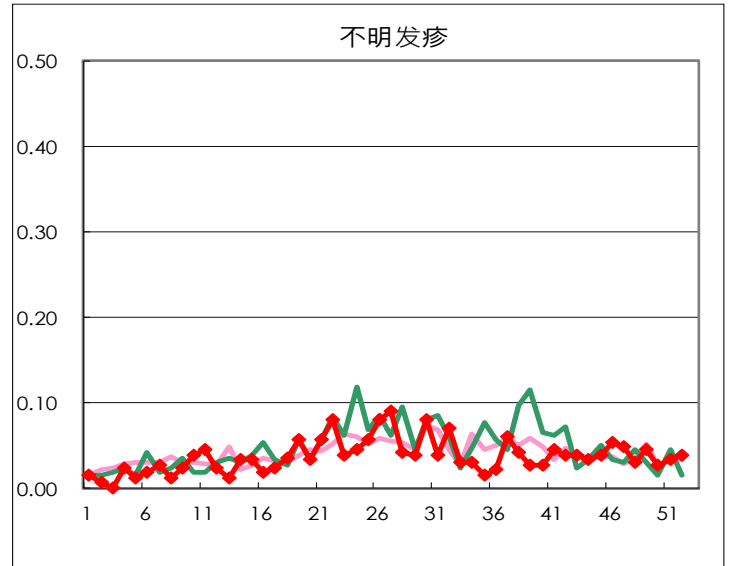
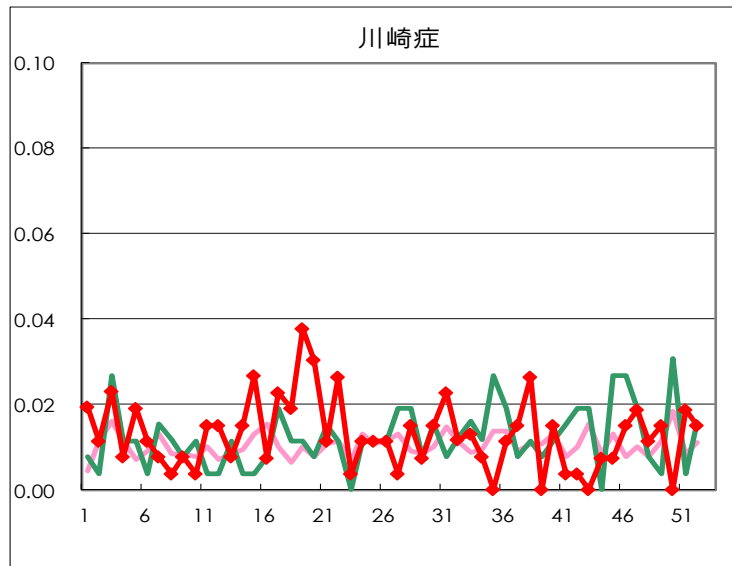
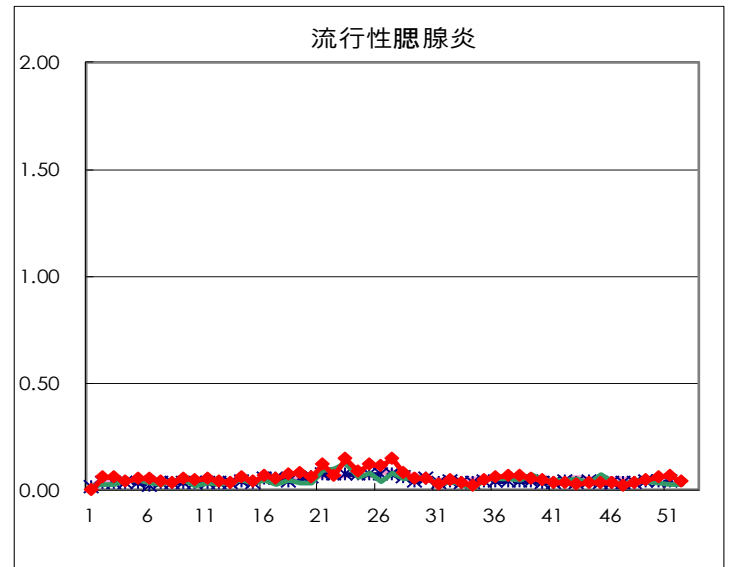
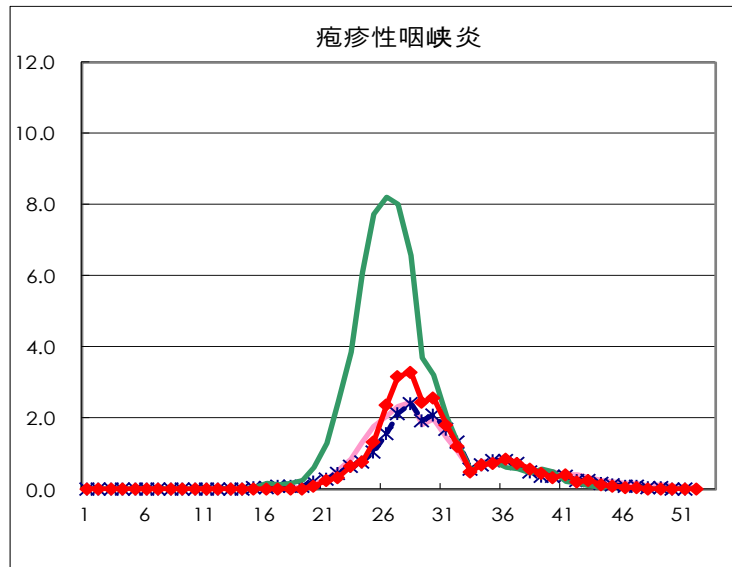
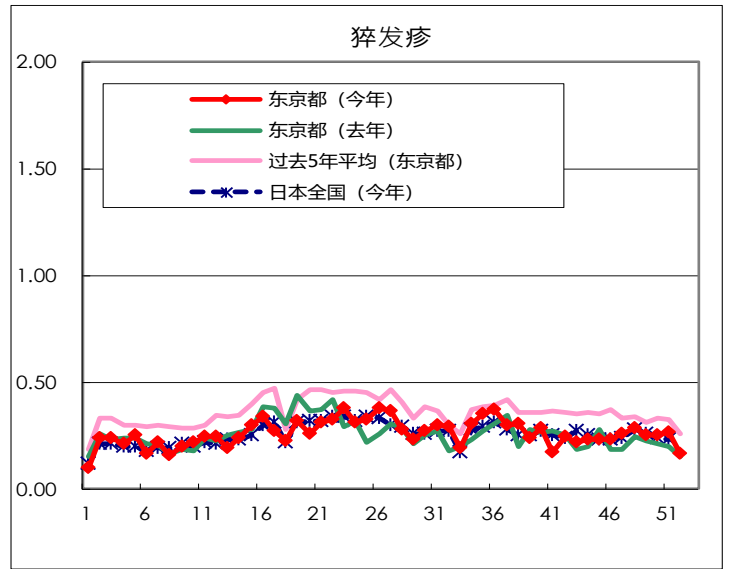
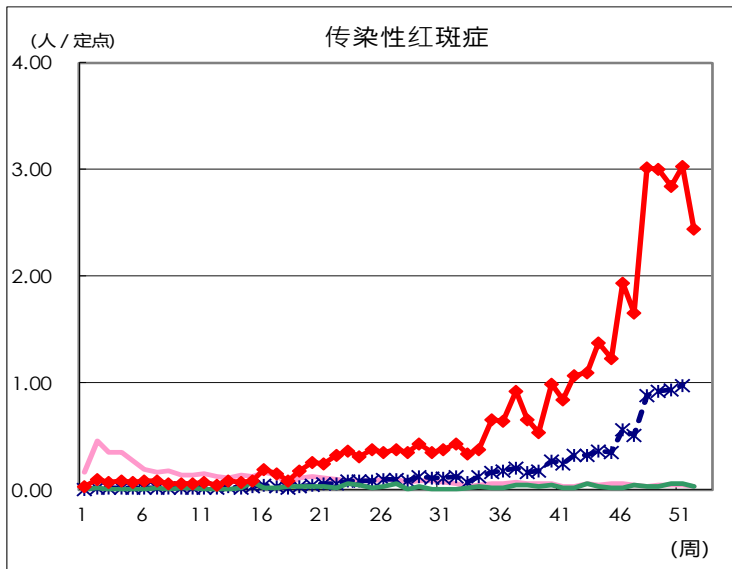
定点掌握对象疾病报告数量

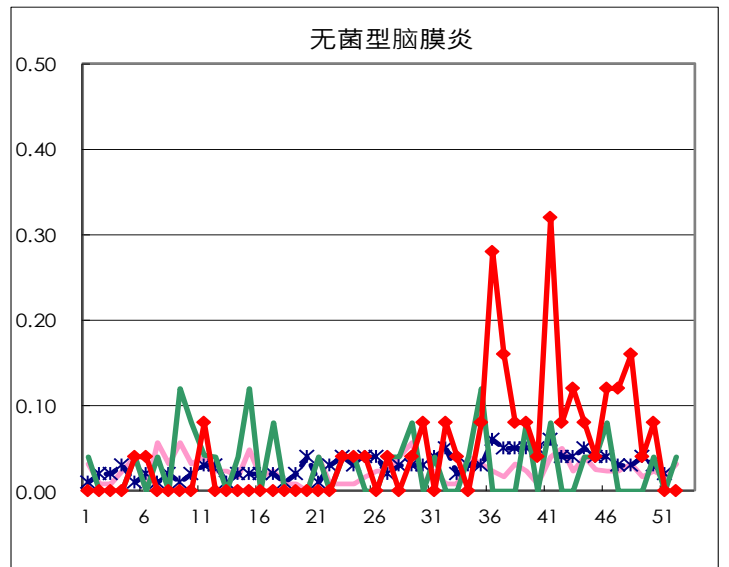
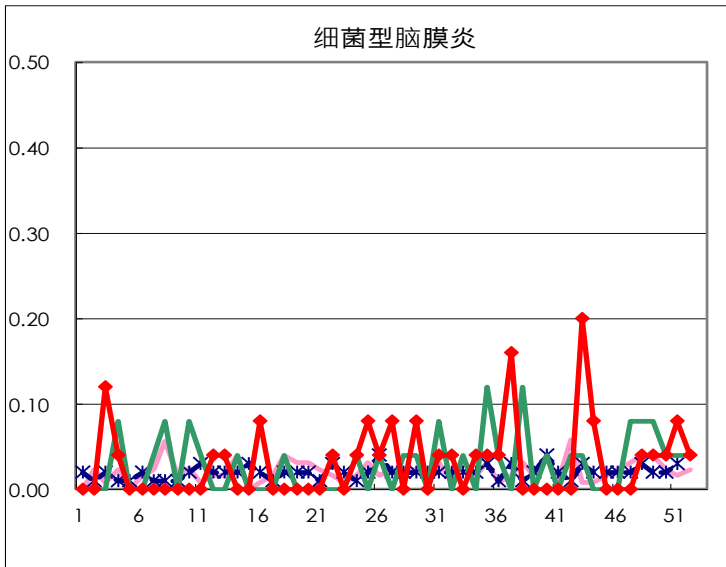
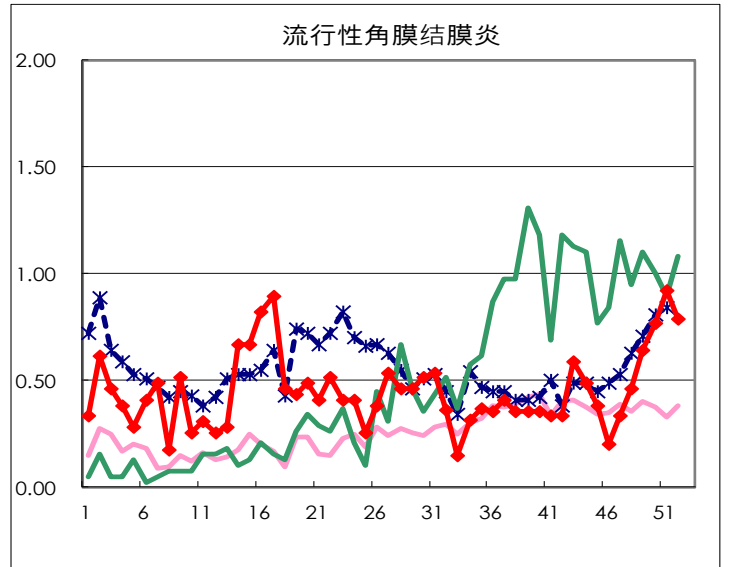
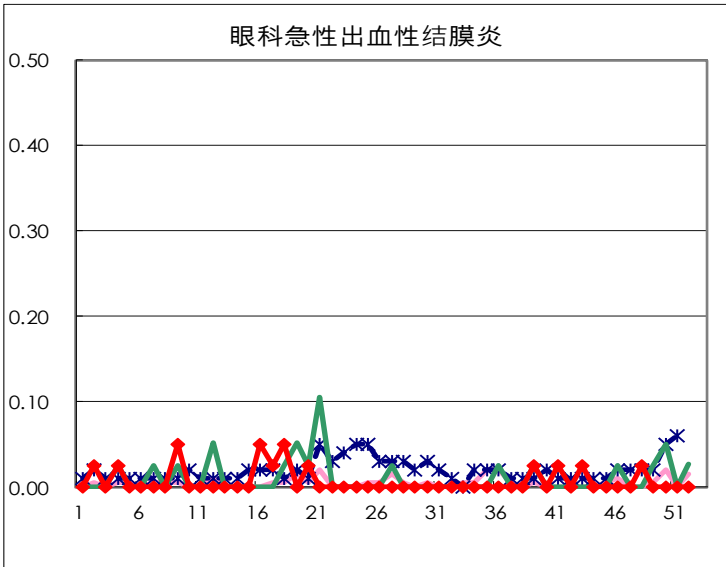
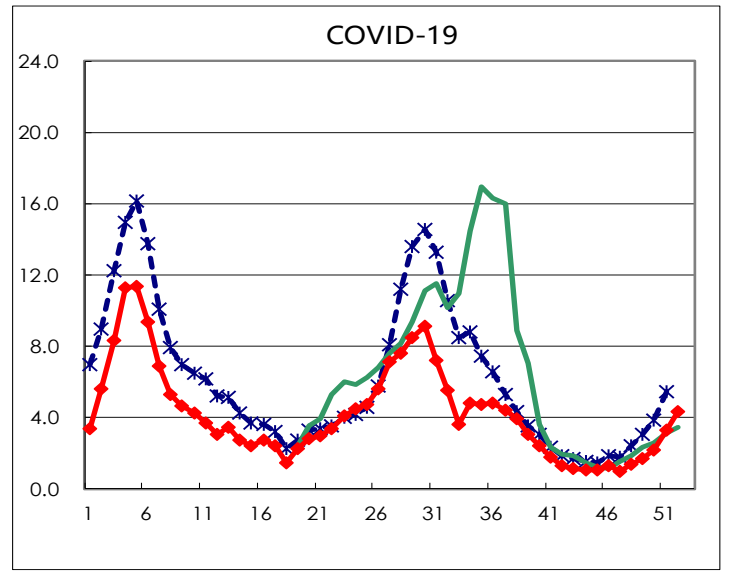
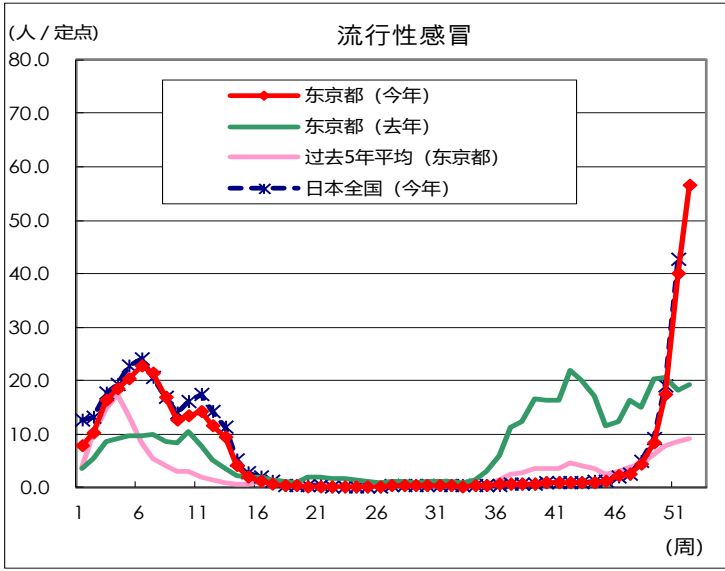
疾病	Diseases	东京				
		第49周	第50周	第51周	第52周	每哨兵
儿童呼吸道融合病毒感染	Respiratory syncytial virus infection	66	74	71	105	0.40
腺病毒感染	Pharyngoconjunctival fever	76	86	80	65	0.25
A群化脓性链球菌咽炎	Group A streptococcal pharyngitis	759	726	827	659	2.50
传染性胃肠炎	Infectious gastroenteritis	1,372	1,530	1,783	1,747	6.62
水痘	Chickenpox	94	115	157	97	0.37
手足口病	Hand, foot, and mouth disease	454	277	170	115	0.44
传染性红斑症	Erythema infectiosum	792	749	801	645	2.44
猝发疹	Exanthem subitum	67	66	70	43	0.16
疱疹性咽峡炎	Herpangina	5	2	4	3	0.01
流行性腮腺炎	Mumps	12	15	17	11	0.04
川崎症	Kawasaki disease	4		5	4	0.02
不明发疹	Cold with exanthems	12	7	9	10	0.04
流行性感冒	Influenza	3,425	7,256	16,727	23,625	56.52
COVID-19	COVID-19	719	924	1,379	1,809	4.33
眼科急性出血性结膜炎	Acute hemorrhagic conjunctivitis					
流行性角膜炎	Epidemic keratoconjunctivitis	25	30	36	30	0.79
细菌型脑膜炎	Bacterial meningitis	1	1	2	1	0.04
无细菌型脑膜炎	Aseptic meningitis	1	2			
霉浆菌肺炎	Mycoplasma pneumonia	81	63	47	43	1.72
披衣菌肺炎 (除鹦鹉病外)	Chlamydial pneumonia (excluding psittacosis)			2		
感染性肠胃炎 (轮状病毒)	Infectious gastroenteritis (only by Rotavirus)	1	1	1	3	0.12
流行性感冒住院	Influenza-Associated Hospitalizations	37	97	234	305	12.20
COVID-19-Associated Hospitalizations	COVID-19-Associated Hospitalizations	81	79	96	126	5.04

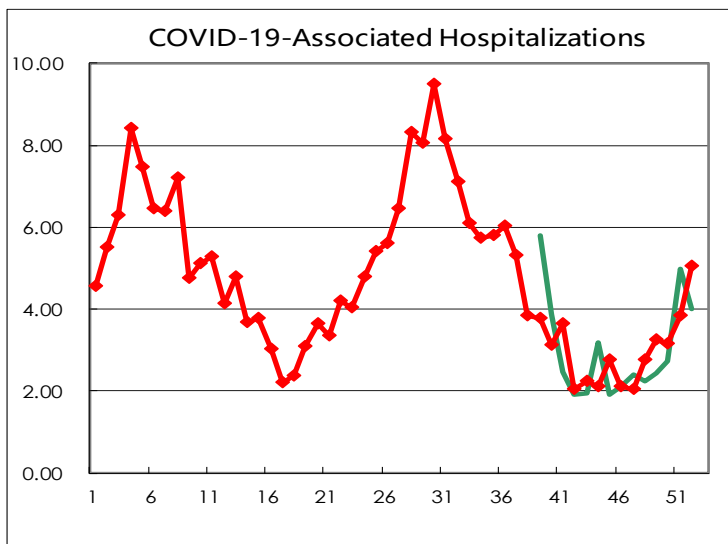
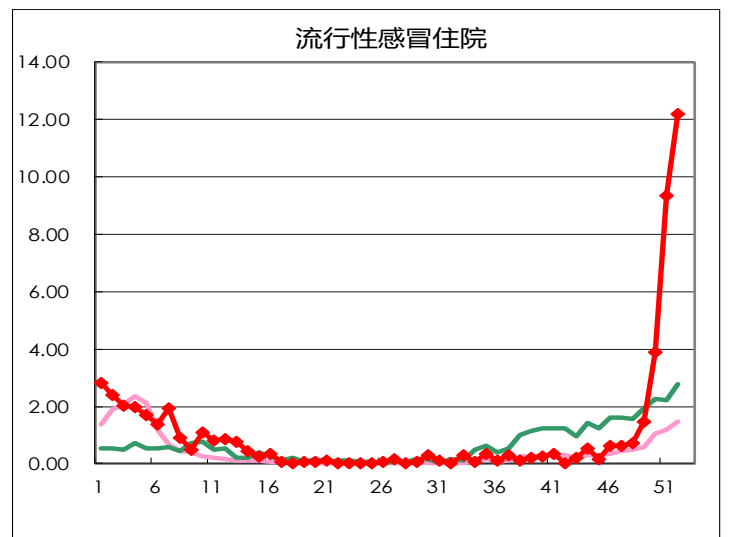
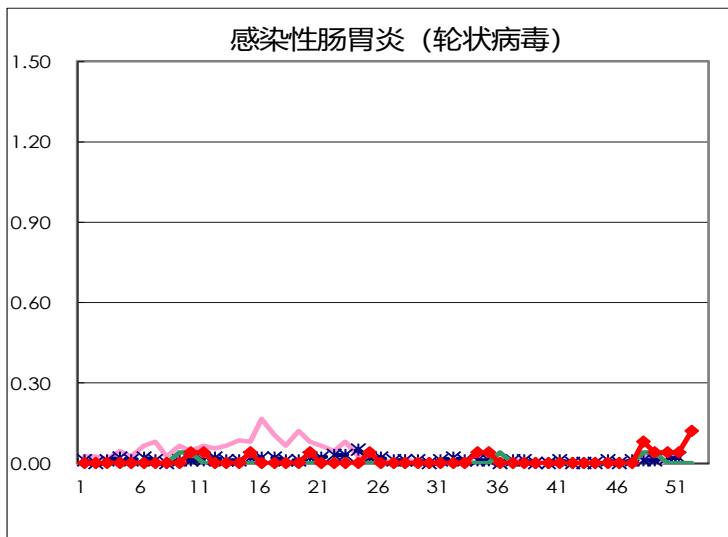
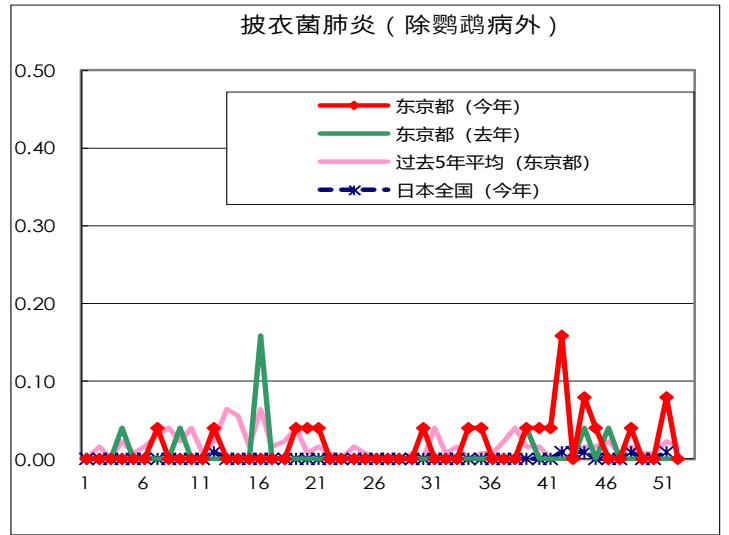
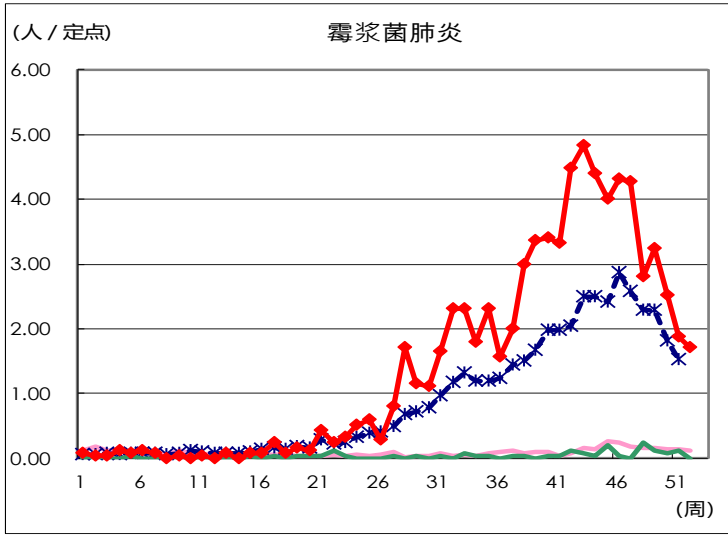
(空白为0)

定点掌握对象疾病在每定点医疗机构的报告数量









每周报告的哨点设施数量

哨兵的类型	定点医疗机构数量	报告医疗机构数量
小儿科的	264	264
流行性感冒 COVID-19	419	418
眼科	39	38
专门设计的	25	25