
INFECTIOUS DISEASES WEEKLY REPORT

TOKYO **iDWR**

Tokyo Metropolitan Infectious Disease Surveillance Center

8 January 2025 / Number 52
(12/23 ~ 12/29)

Surveillance System in Tokyo, Japan

The infectious diseases which all physicians must report
All physicians must report to health centers the incidence of the diseases which are shown at page one. Health centers electronically report the individual cases to Tokyo Metropolitan Infectious Disease Surveillance Center.

The infectious diseases required to be reported by the sentinels
The numbers of patients who visit the sentinel clinics or hospitals during a week are reported to health centers in Tokyo. And they electronically report the numbers to Tokyo Metropolitan Infectious Disease Surveillance Center. We have about 500 sentinel clinics and hospitals in Tokyo.

Tokyo Metropolitan Institute of Public Health

TEL:81-3-3363-3213 FAX:81-3-5332-7365

e-mail:tmiph@section.metro.tokyo.jp

URL:idsc.tmiph.metro.tokyo.lg.jp/

Number of patients with the diseases which all physicians must report

Category	Diseases	Tokyo				
		49th	50th	51st	52nd	Cum 2024
I	Ebola hemorrhagic fever					
	Crimean-Congo hemorrhagic fever					
	Smallpox					
	South American hemorrhagic fever					
	Plague					
	Marburg disease					
	Lassa fever					
II	Acute poliomyelitis					
	Tuberculosis	46	40	41	50	2,150
	Diphtheria					
	Severe Acute Respiratory Syndrome(SARS)					
	Middle East Respiratory Syndrome (MERS)					
	Avian influenza H5N1					
	Avian influenza H7N9					
III	Cholera					2
	Shigellosis	1	1			25
	Enterohemorrhagic Escherichia coli infection	10	1	6	3	471
	Typhoid fever		1			7
	Paratyphoid fever			1		4
IV	Hepatitis E	1	1	3	6	141
	West Nile fever					
	Hepatitis A		1	1		21
	Echinococcosis					1
	Mpox					14
	Yellow fever					
	Psittacosis					
	Omsk hemorrhagic fever					
	Relapsing fever					
	Kyasanur forest disease					
	Q fever					
	Rabies					
	Coccidioidomycosis					2
	Zika virus infection					
	Severe Fever with Thrombocytopenia Syndrome					
	Hemorrhagic fever with renal syndrome					
	Western equine encephalitis					
	Tick-borne encephalitis					
	Anthrax					
	Chikungunya fever					5
	Scrub typhus(Tsutsugamushi disease)		1	2		5
	Dengue fever	2		2	1	69
	Eastern equine encephalitis					
	Avian influenza (excluding H5N1 and H7N9)					
	Nipah virus infection					
	Japanese spotted fever					
	Japanese encephalitis					1
	Hantavirus pulmonary syndrome					
	Herpes B virus infection					
	Glanders					
	Brucellosis					
	Venezuelan equine encephalitis					
	Hendra virus infection					
Epidemic typhus						
Botulism						
Malaria					10	
Tularemia						
Lyme disease					1	
Lyssavirus infection(excluding rabies)						
Rift valley fever						
Melioidosis						
Legionellosis	8	2	2	1	260	
Leptospirosis					5	
Rocky mountain spotted fever						

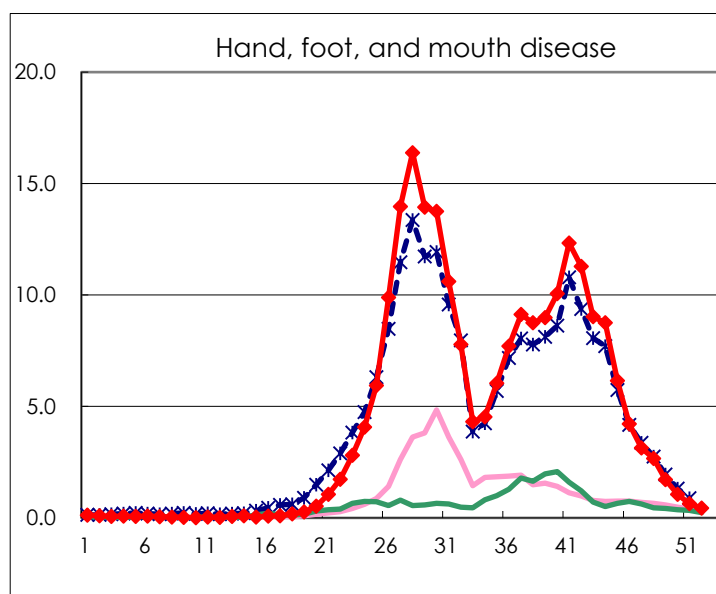
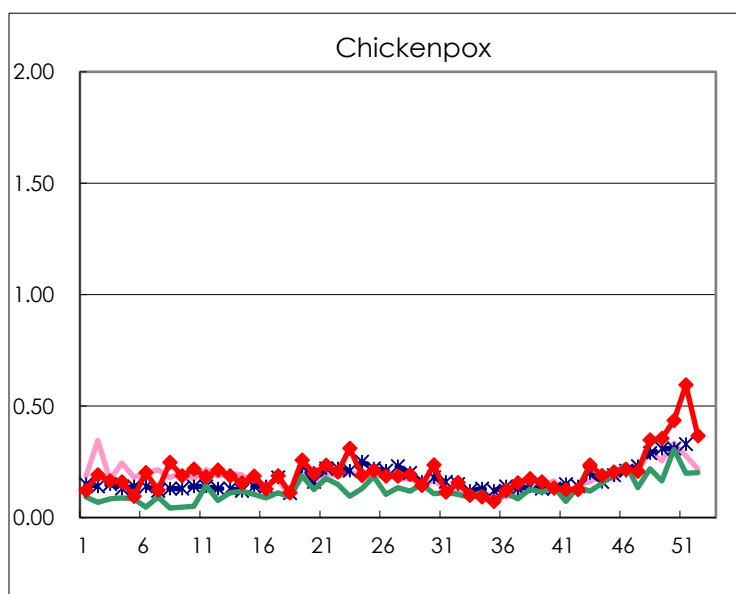
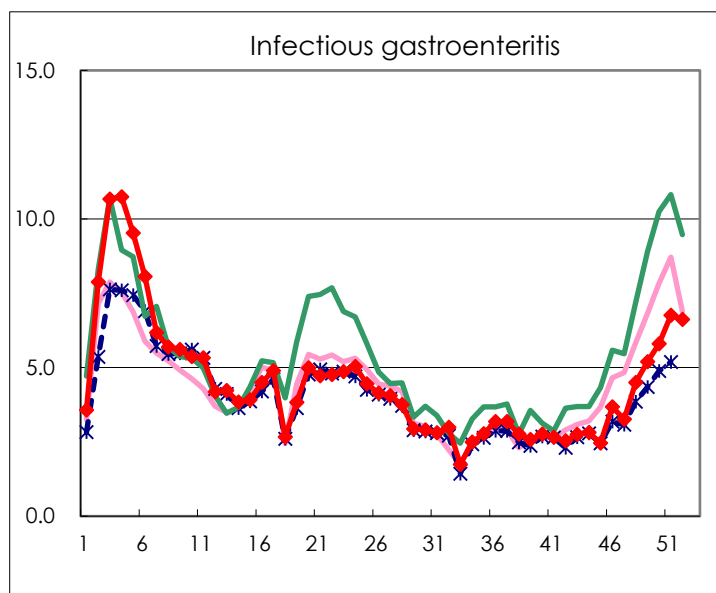
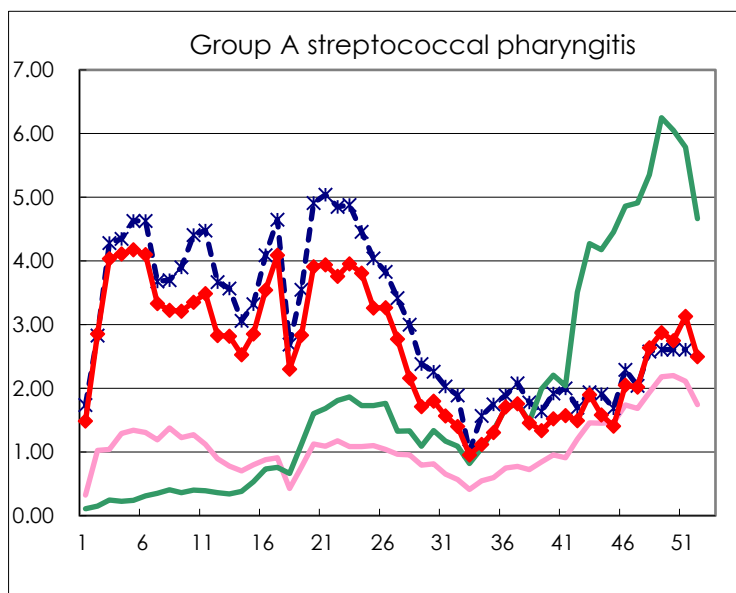
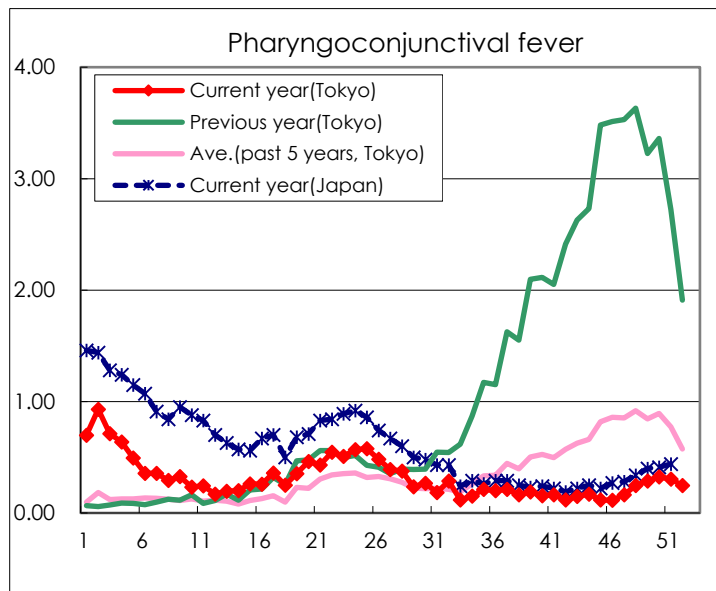
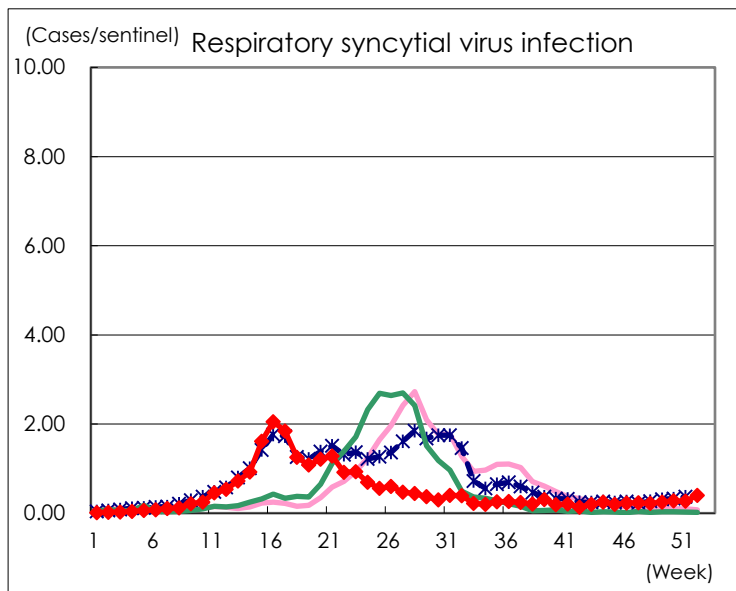
Category	Diseases	Tokyo				
		49th	50th	51st	52nd	Cum 2024
V	Amebiasis	3	2		3	102
	Viral hepatitis(excluding hepatitis A and E)	4		1		42
	CRE infection	11	2	3	7	208
	Acute Flaccid Paralysis (excluding Acute poliomyelitis)					5
	Acute encephalitis(excluding JE and WNE)	2	2	4	4	54
	Cryptosporidiosis					14
	Creutzfeldt-Jakob disease					11
	Severe invasive streptococcal infections(TSLS)	7	3	3	4	245
	Acquired immunodeficiency syndrome (AIDS)	5	3	7	6	289
	Giardiasis		1			15
	Invasive <i>Haemophilus influenzae</i> disease	2		1	2	70
	Invasive meningococcal disease					10
	Invasive pneumococcal disease	6	11	11	12	280
	Varicella (limited to hospitalized case)	2	1	1	1	67
	Congenital rubella syndrome					
	Syphilis	82	77	53	56	3,748
	Disseminated cryptococcosis		1			20
	Tetanus		1			3
	Vancomycin-resistant <i>S. aureus</i> infection					
	Vancomycin-resistant Enterococcus infection					7
	Pertussis	15	17	16	21	395
	Rubella					1
	Measles					10
MDRA infection					1	

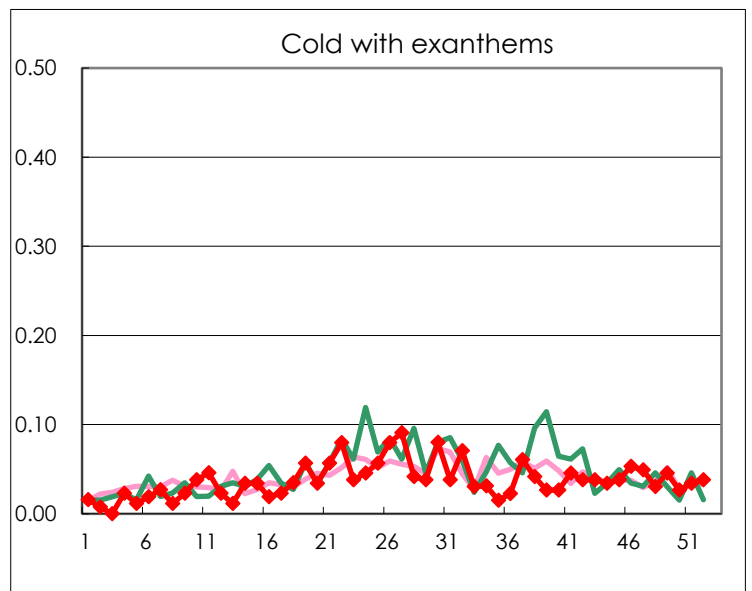
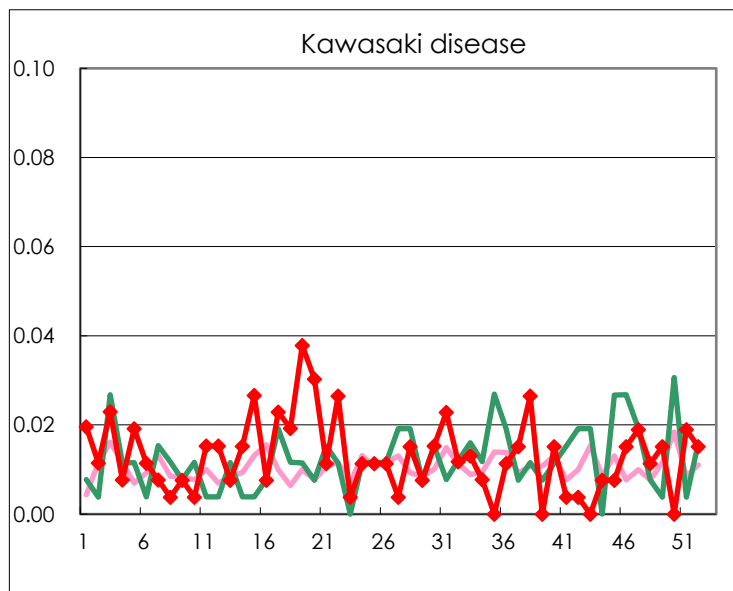
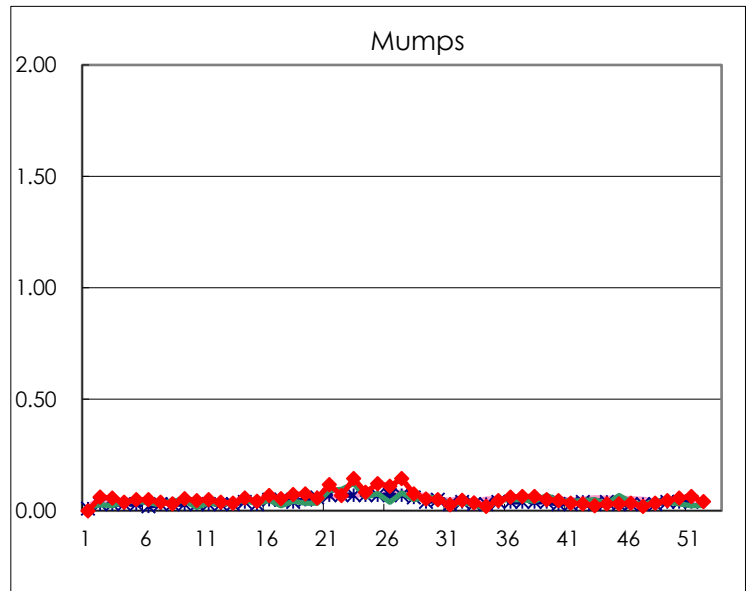
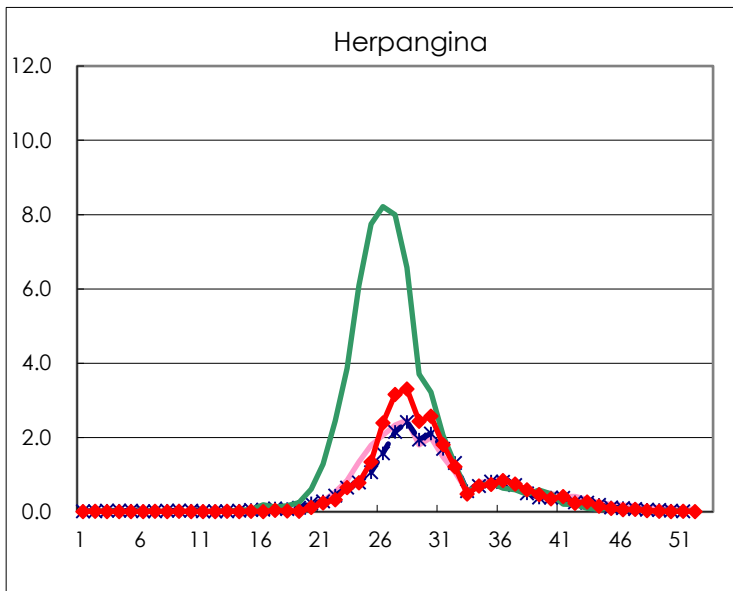
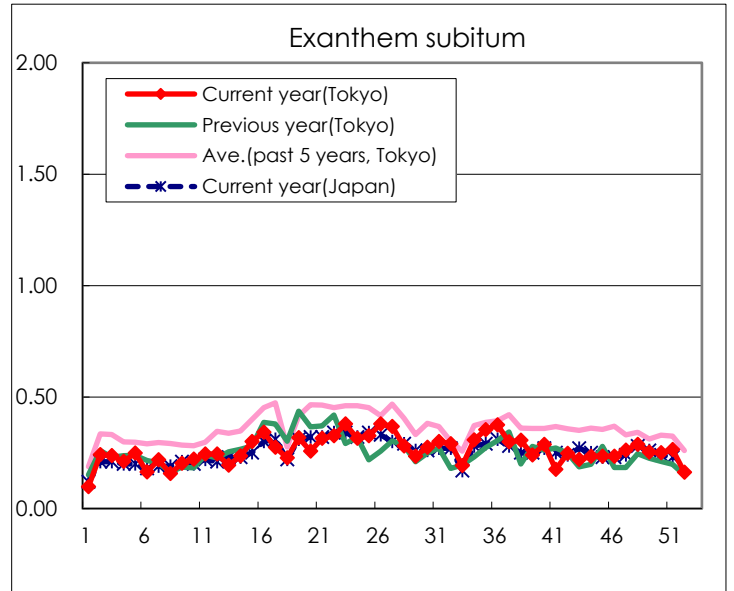
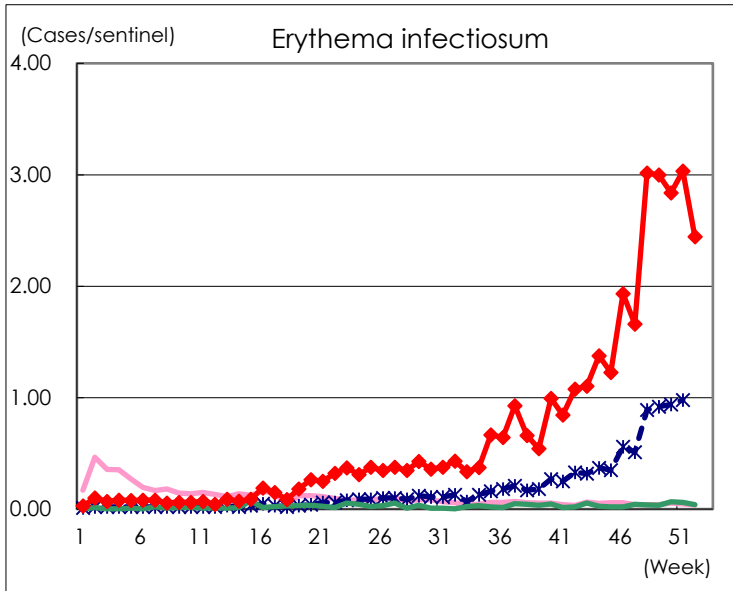
Number of patients with the diseases to be reported
by the designated clinics and hospitals

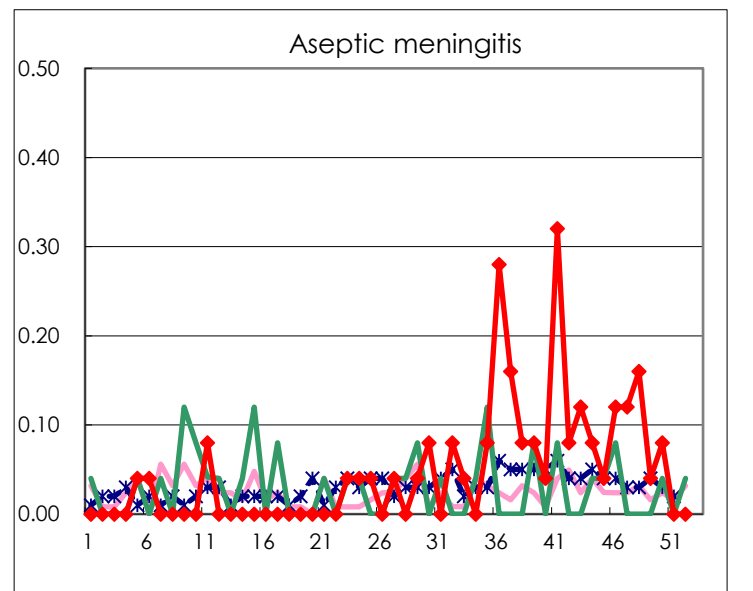
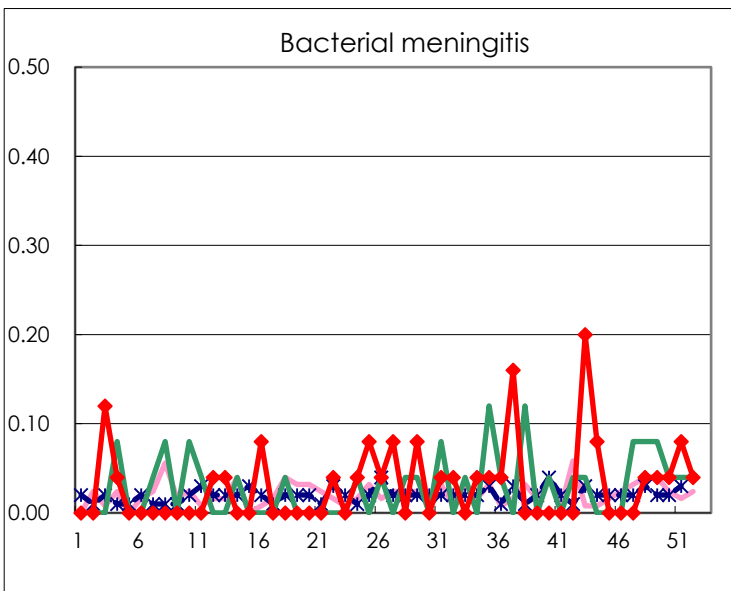
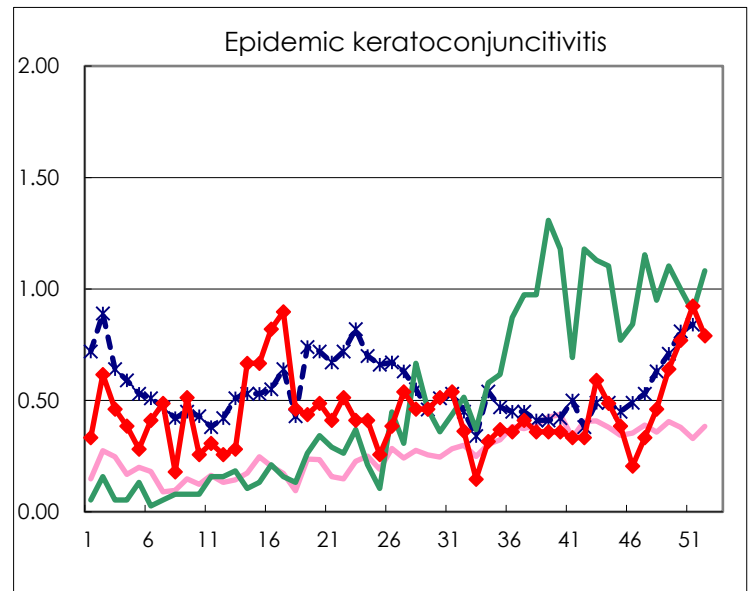
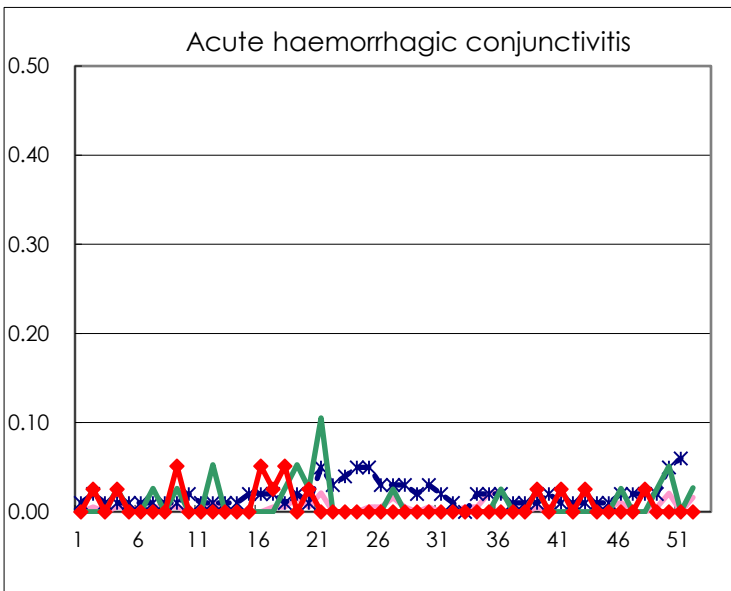
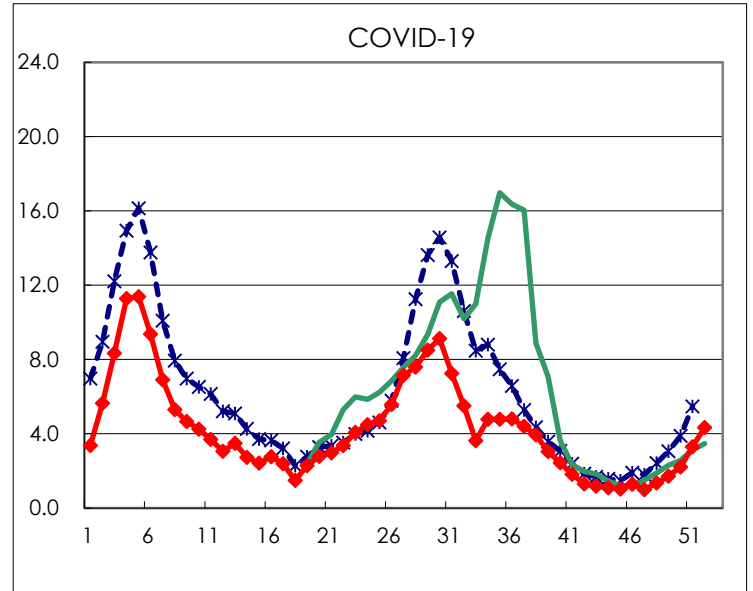
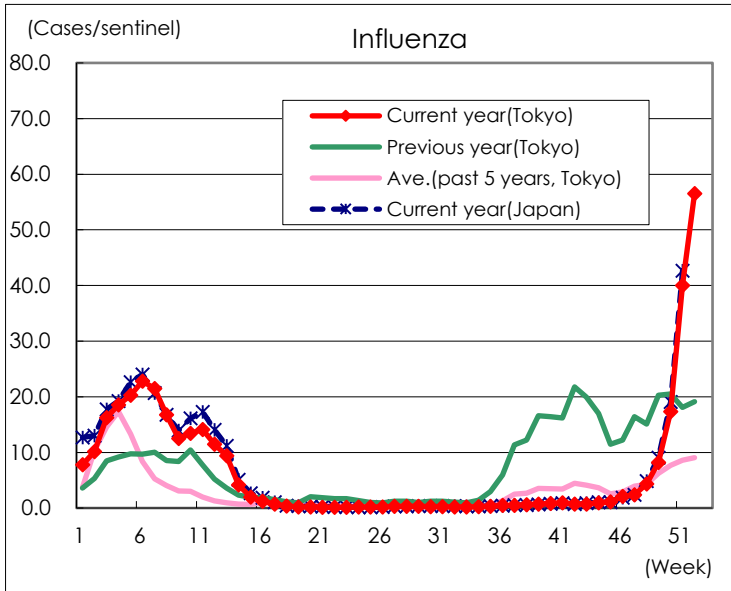
Diseases	Tokyo					
	49th	50th	51st	52nd	/sentinel	
Respiratory syncytial virus infection	66	74	71	105	0.40	
Pharyngoconjunctival fever	76	86	80	65	0.25	
Group A streptococcal pharyngitis	759	726	827	659	2.50	
Infectious gastroenteritis	1,372	1,530	1,783	1,747	6.62	
Chickenpox	94	115	157	97	0.37	
Hand, foot, and mouth disease	454	277	170	115	0.44	
Erythema infectiosum	792	749	801	645	2.44	
Exanthem subitum	67	66	70	43	0.16	
Herpangina	5	2	4	3	0.01	
Mumps	12	15	17	11	0.04	
Kawasaki disease	4		5	4	0.02	
Cold with exanthems	12	7	9	10	0.04	
Influenza	3,425	7,256	16,727	23,625	56.52	
COVID-19	719	924	1,379	1,809	4.33	
Acute hemorrhagic conjunctivitis						
Epidemic keratoconjunctivitis	25	30	36	30	0.79	
Bacterial meningitis	1	1	2	1	0.04	
Aseptic meningitis	1	2				
Mycoplasma pneumonia	81	63	47	43	1.72	
Chlamydial pneumonia (excluding psittacosis)			2			
Infectious gastroenteritis (only by Rotavirus)	1	1	1	3	0.12	
Influenza-Associated Hospitalizations	37	97	234	305	12.20	
COVID-19-Associated Hospitalizations	81	79	96	126	5.04	

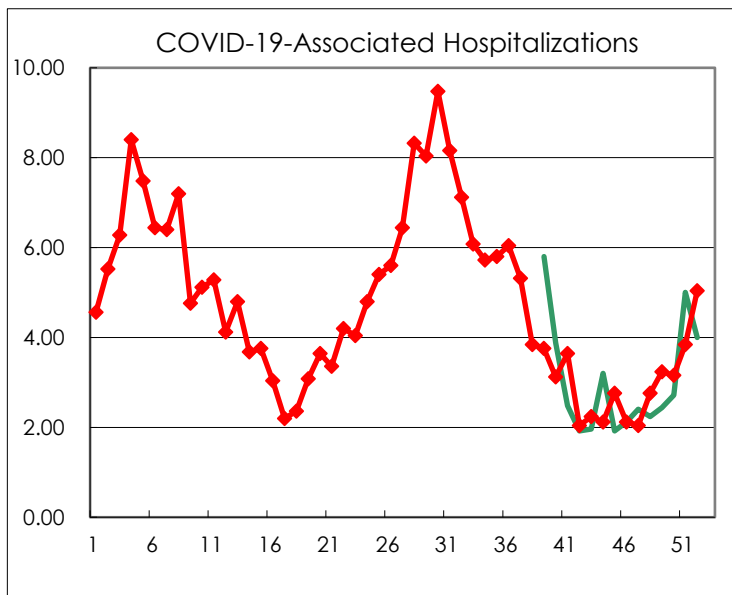
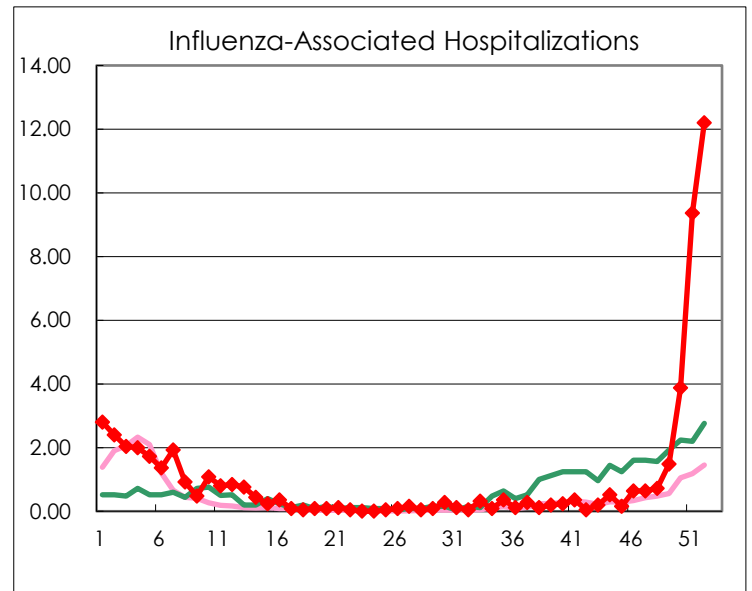
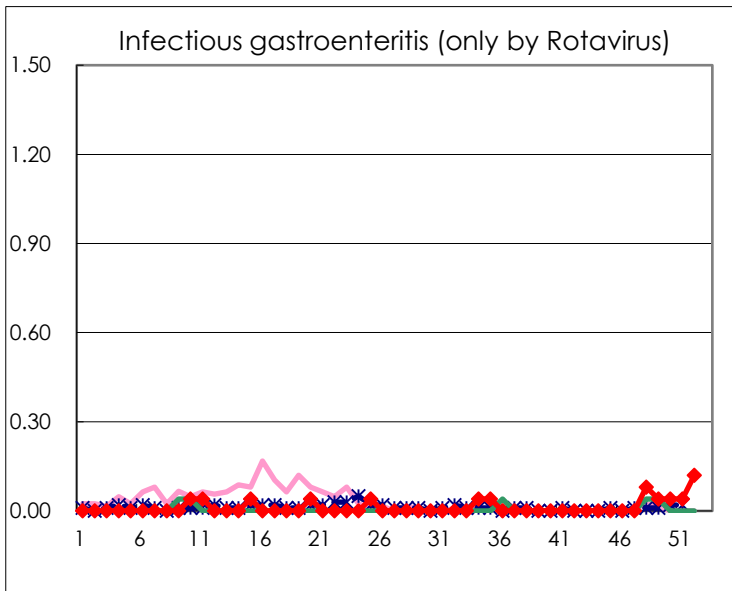
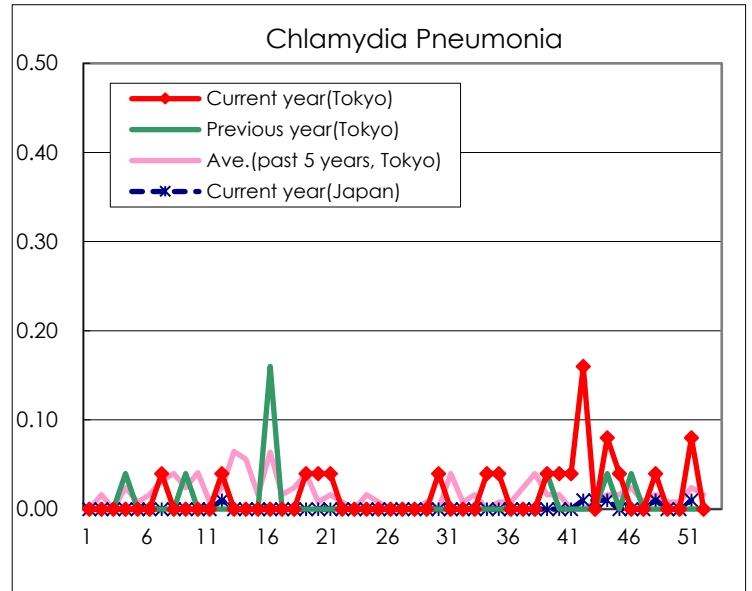
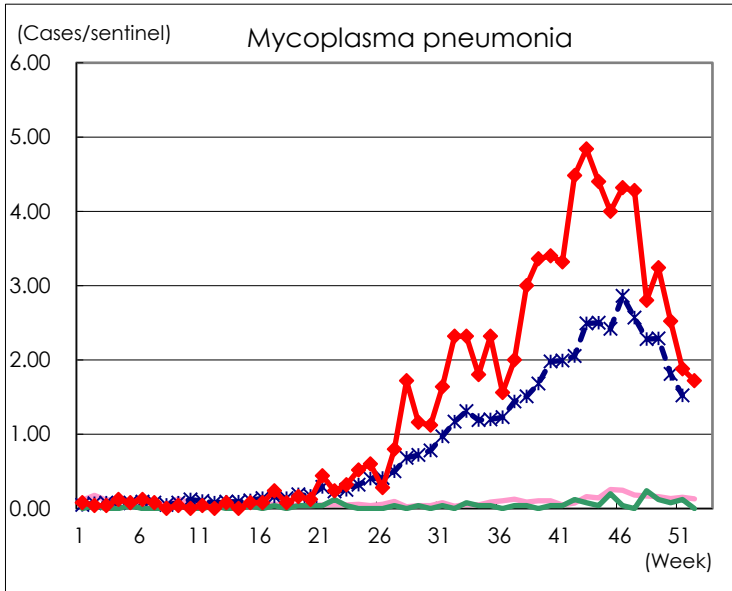
(Blank means 0.)

Disease Trend Graph (weekly reported cases per sentinel in comparison)









Number of sentinel facilities for weekly reporting		
Types of sentinels	Number of sentinels	Sentinels having reported
Pediatric	264	264
Influenza COVID-19	419	418
Ophthalmic	39	38
Specially-designated	25	25