
INFECTIOUS DISEASES WEEKLY REPORT

TOKYO iDWR

Tokyo Metropolitan Infectious Disease Surveillance Center

21 March 2025 / Number 11
(3/10 ~ 3/16)

Surveillance System in Tokyo, Japan

The infectious diseases which all physicians must report
All physicians must report to health centers the incidence of the diseases which are shown at page one. Health centers electronically report the individual cases to Tokyo Metropolitan Infectious Disease Surveillance Center.

The infectious diseases required to be reported by the sentinels
The numbers of patients who visit the sentinel clinics or hospitals during a week are reported to health centers in Tokyo. And they electronically report the numbers to Tokyo Metropolitan Infectious Disease Surveillance Center. We have about 500 sentinel clinics and hospitals in Tokyo.

Tokyo Metropolitan Institute of Public Health

TEL:81-3-3363-3213 FAX:81-3-5332-7365

e-mail:tmiph@section.metro.tokyo.jp

URL:idsctmiph.metro.tokyo.lg.jp/

Number of patients with the diseases which all physicians must report

Category	Diseases	Tokyo				
		8th	9th	10th	11th	Cum 2024
I	Ebola hemorrhagic fever					
	Crimean-Congo hemorrhagic fever					
	Smallpox					
	South American hemorrhagic fever					
	Plague					
	Marburg disease					
	Lassa fever					
II	Acute poliomyelitis					
	Tuberculosis	42	37	29	38	371
	Diphtheria					
	Severe Acute Respiratory Syndrome(SARS)					
	Middle East Respiratory Syndrome (MERS)					
	Avian influenza H5N1					
III	Avian influenza H7N9					
	Cholera					
	Shigellosis				1	2
	Enterohemorrhagic Escherichia coli infection	6	1	1	2	23
	Typhoid fever					1
Paratyphoid fever						
IV	Hepatitis E	1	3	4	2	23
	West Nile fever					
	Hepatitis A			1		3
	Echinococcosis					1
	Mpox					
	Yellow fever					
	Psittacosis			1		1
	Omsk hemorrhagic fever					
	Relapsing fever					
	Kyasanur forest disease					
	Q fever					
	Rabies					
	Coccidioidomycosis					
	Zika virus infection					
	Severe Fever with Thrombocytopenia Syndrome					
	Hemorrhagic fever with renal syndrome					
	Western equine encephalitis					
	Tick-borne encephalitis					
	Anthrax					
	Chikungunya fever					
	Scrub typhus(Tsutsugamushi disease)					3
	Dengue fever	1	1	5		15
	Eastern equine encephalitis					
	Avian influenza (excluding H5N1 and H7N9)					
	Nipah virus infection					
	Japanese spotted fever					
	Japanese encephalitis					
	Hantavirus pulmonary syndrome					
	Herpes B virus infection					
	Glanders					
	Brucellosis					
	Venezuelan equine encephalitis					
	Hendra virus infection					
Epidemic typhus						
Botulism						
Malaria					2	
Tularemia						
Lyme disease						
Lyssavirus infection(excluding rabies)						
Rift valley fever						
Melioidosis						
Legionellosis		2	2	5	32	
Leptospirosis						
Rocky mountain spotted fever						

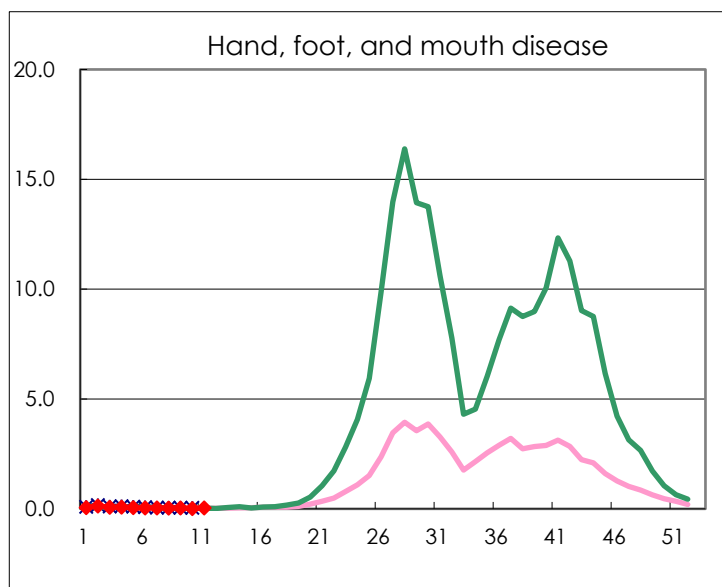
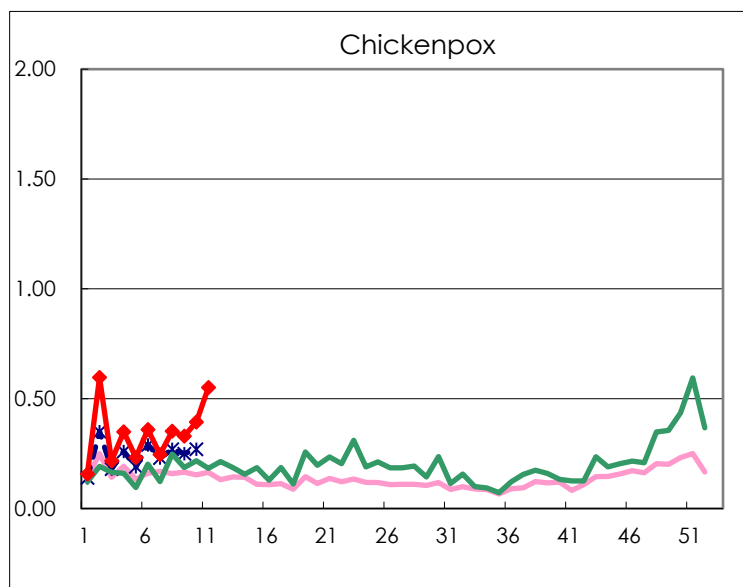
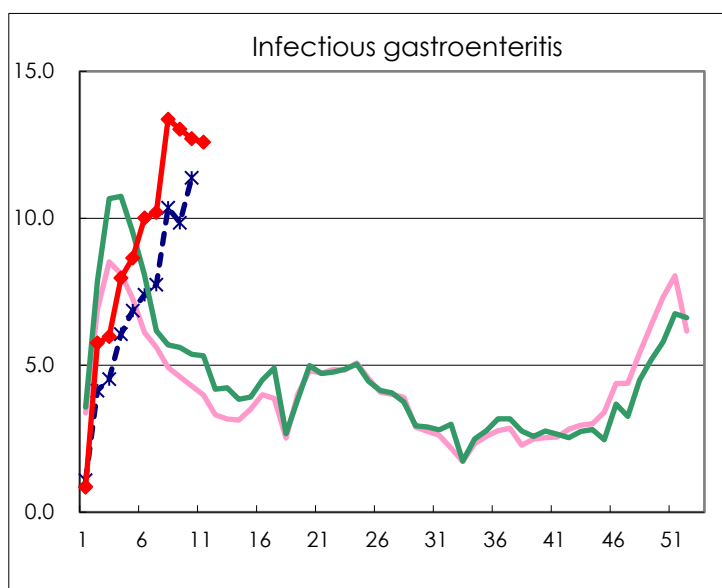
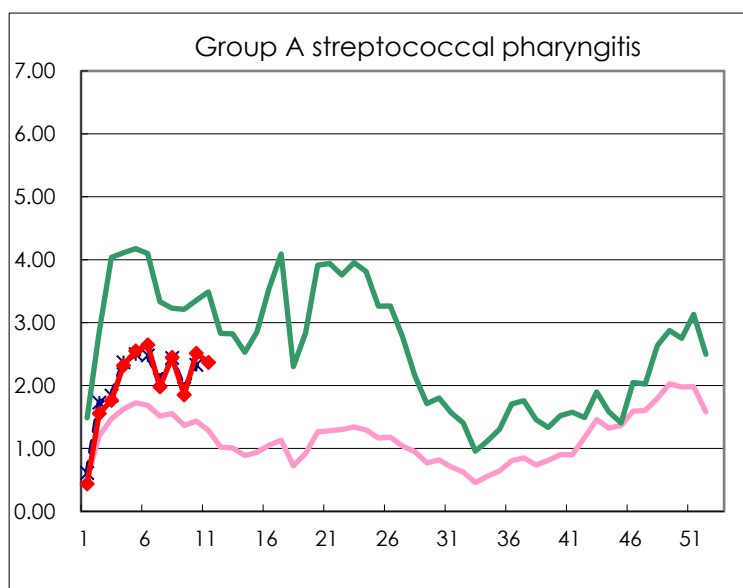
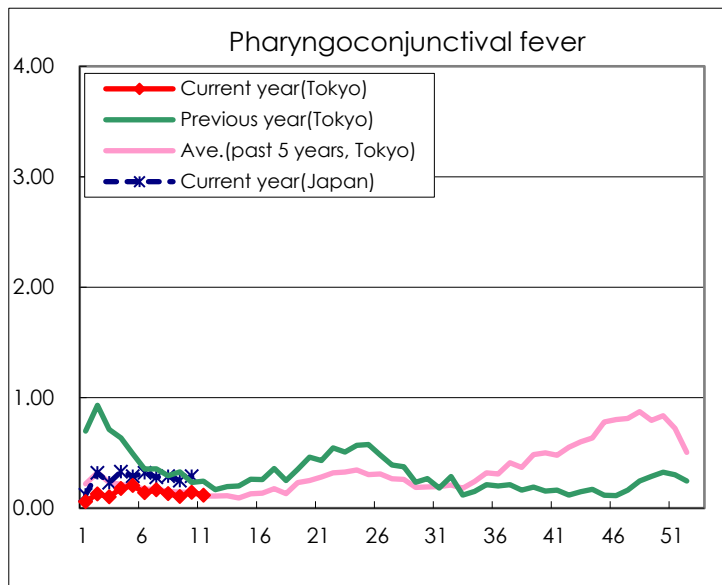
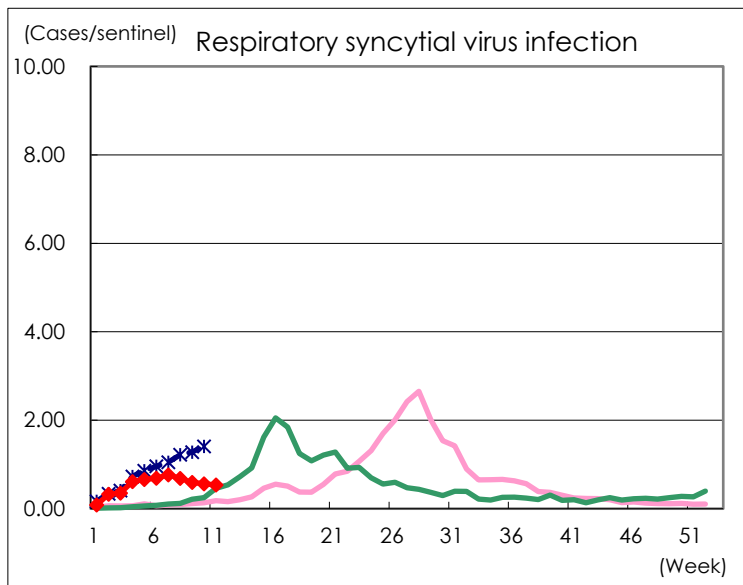
Category	Diseases	Tokyo				
		8th	9th	10th	11th	Cum 2024
V	Amebiasis		3	3	3	21
	Viral hepatitis(excluding hepatitis A and E)	1	1	3		12
	CRE infection	4	6	6	5	39
	Acute Flaccid Paralysis (excluding Acute poliomyelitis)					
	Acute encephalitis(excluding JE and WNE)	1			1	16
	Cryptosporidiosis				1	2
	Creutzfeldt-Jakob disease	1				1
	Severe invasive streptococcal infections(TSLS)	5	1	3	3	33
	Acquired immunodeficiency syndrome (AIDS)	4	2	6	3	45
	Giardiasis					2
	Invasive <i>Haemophilus influenzae</i> disease		4	1		16
	Invasive meningococcal disease			1		3
	Invasive pneumococcal disease	10	3	6	9	119
	Varicella (limited to hospitalized case)	1	1	3	5	20
	Congenital rubella syndrome					
	Syphilis	81	75	73	71	722
	Disseminated cryptococcosis					6
	Tetanus			2	1	4
	Vancomycin-resistant <i>S. aureus</i> infection					
	Vancomycin-resistant <i>Enterococcus</i> infection					3
Pertussis	32	31	24	42	267	
Rubella					2	
Measles				2	3	
MDRA infection						

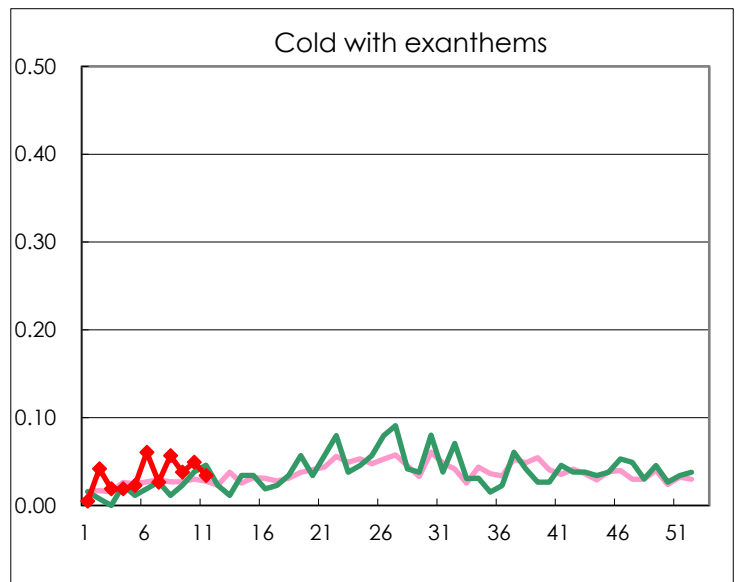
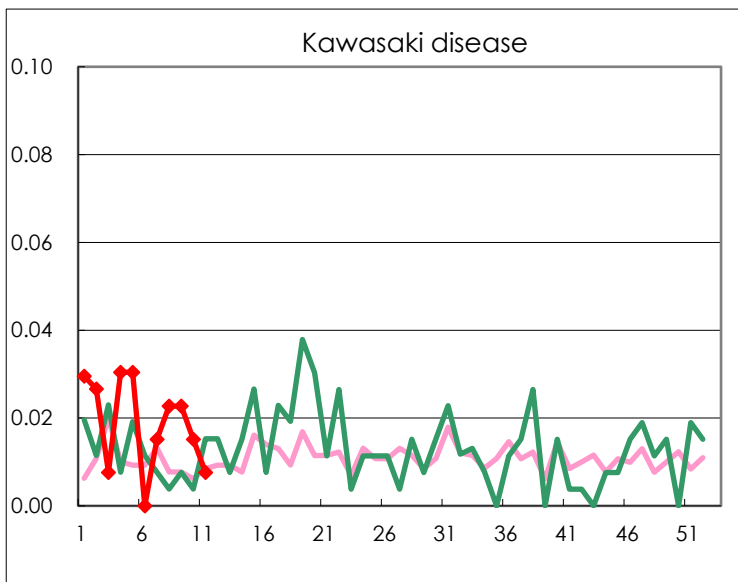
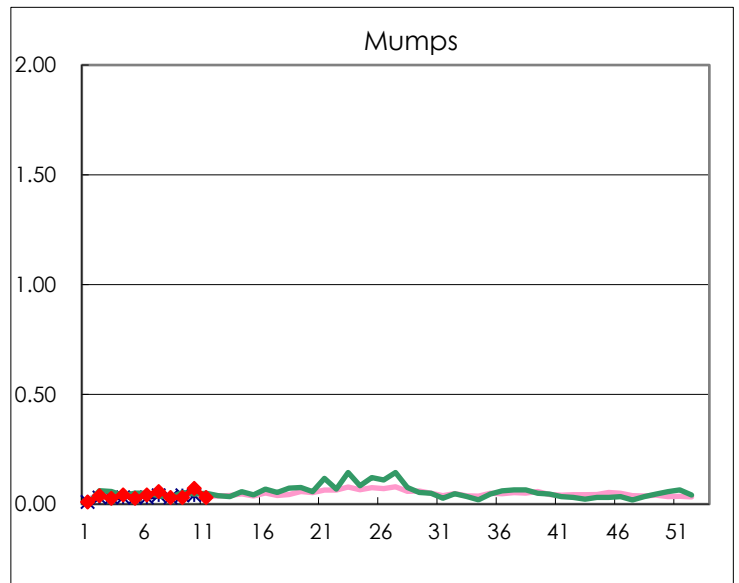
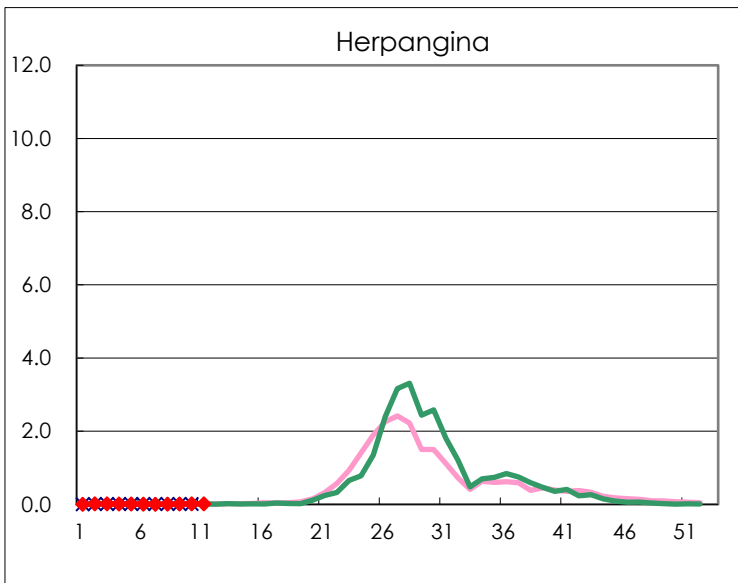
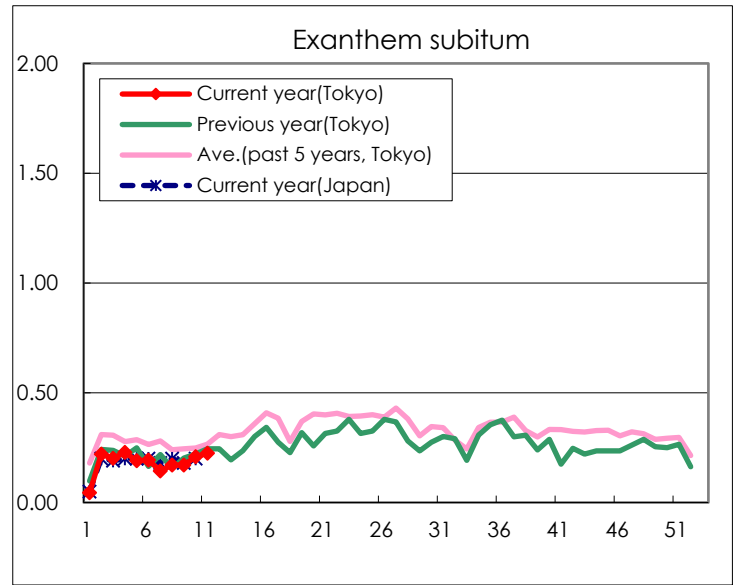
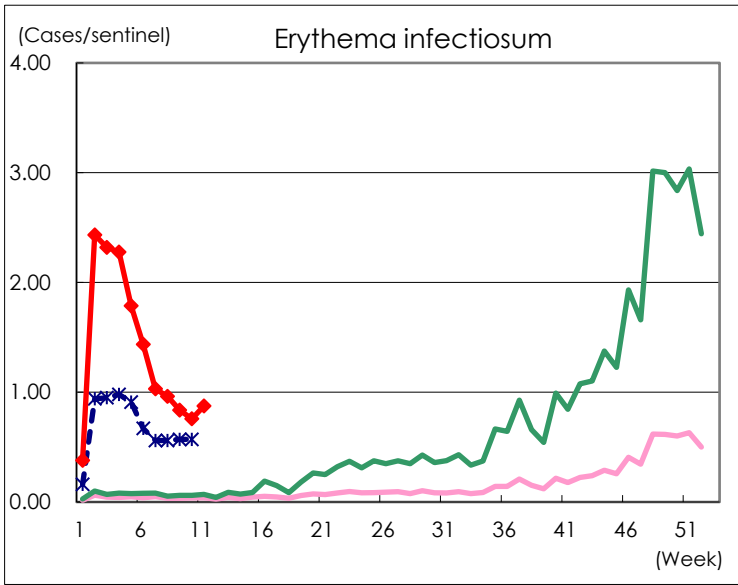
Number of patients with the diseases to be reported
by the designated clinics and hospitals

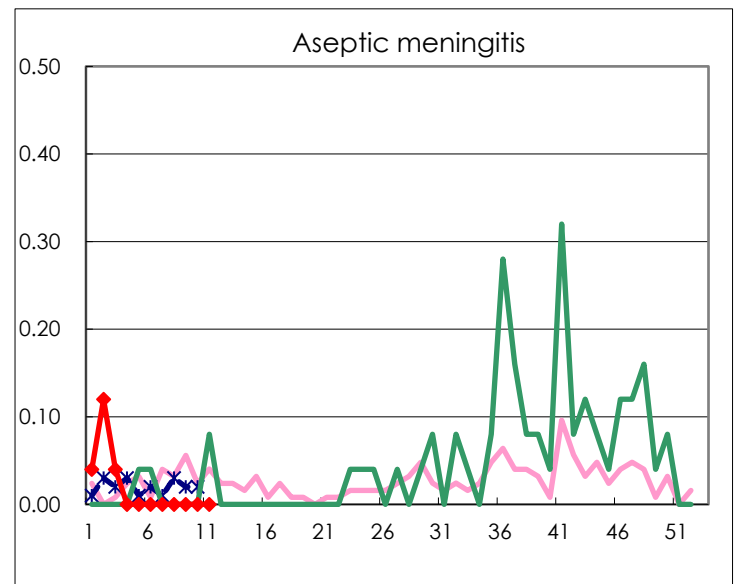
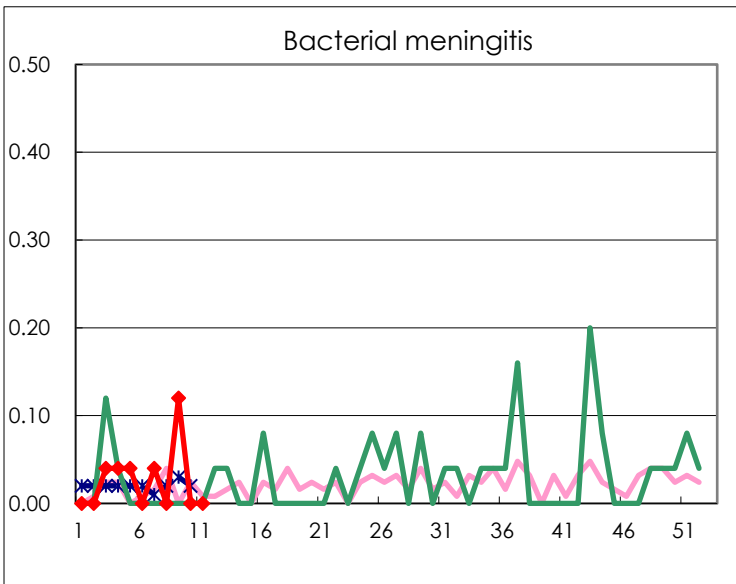
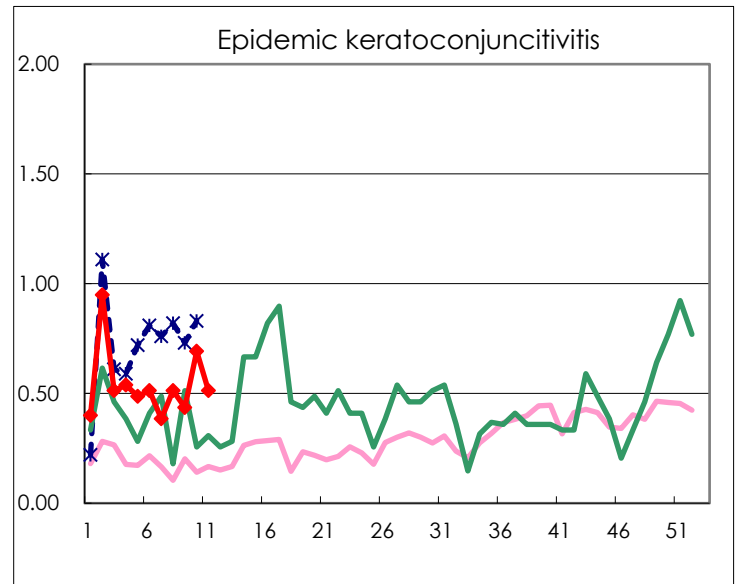
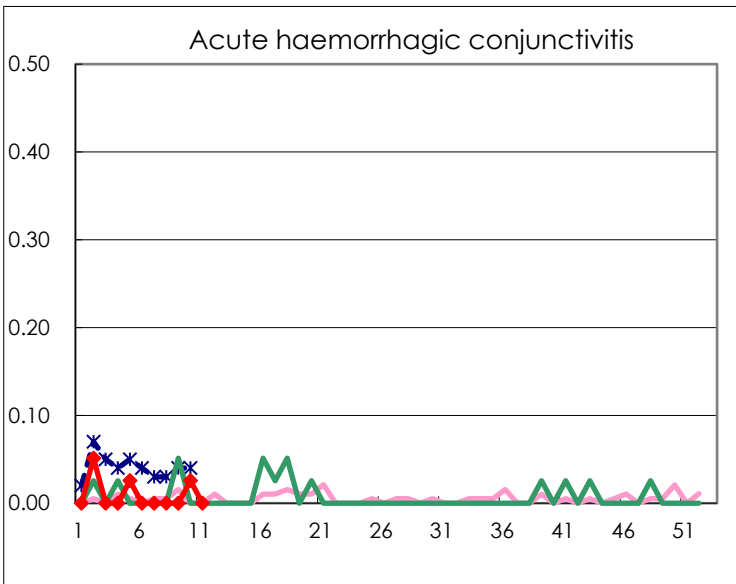
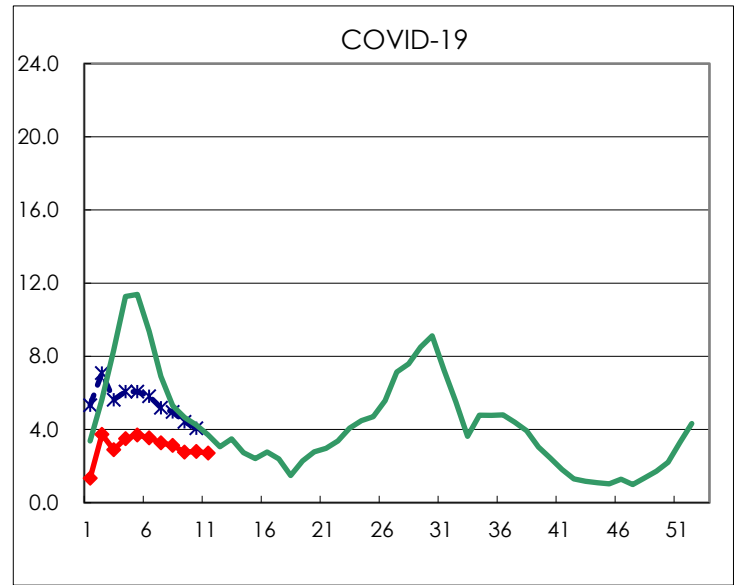
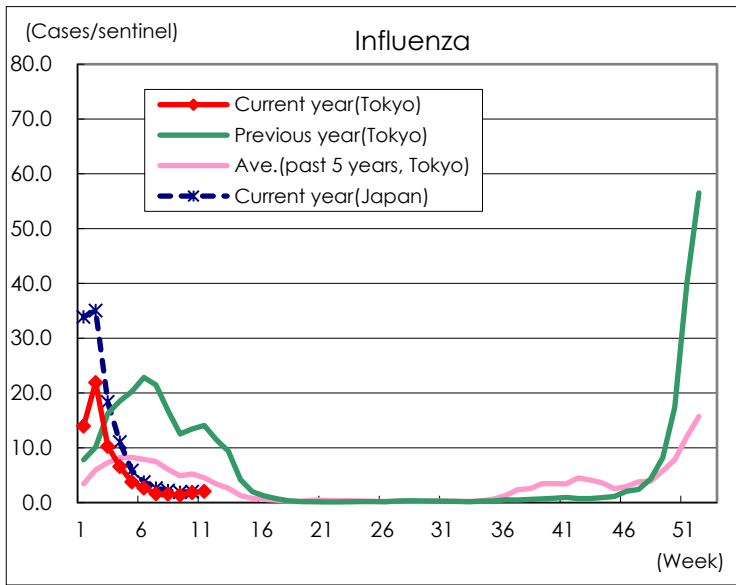
Diseases	Tokyo				
	8th	9th	10th	11th	/sentinel
Respiratory syncytial virus infection	181	157	149	141	0.54
Pharyngoconjunctival fever	35	28	38	31	0.12
Group A streptococcal pharyngitis	646	489	663	623	2.37
Infectious gastroenteritis	3,530	3,441	3,357	3,312	12.59
Chickenpox	93	87	104	145	0.55
Hand, foot, and mouth disease	9	12	4	12	0.05
Erythema infectiosum	254	221	200	230	0.87
Exanthem subitum	45	45	55	59	0.22
Herpangina	1	2	3	4	0.02
Mumps	8	8	19	8	0.03
Kawasaki disease	6	6	4	2	0.01
Cold with exanthems	15	10	13	9	0.03
Influenza	658	589	772	865	2.07
COVID-19	1,314	1,158	1,173	1,133	2.71
Acute hemorrhagic conjunctivitis			1		
Epidemic keratoconjunctivitis	20	17	27	20	0.51
Bacterial meningitis		3			
Aseptic meningitis					
<i>Mycoplasma pneumoniae</i>	8	4	5	3	0.12
Chlamydial pneumonia (excluding psittacosis)	1			1	0.04
Infectious gastroenteritis (only by Rotavirus)	9	12	8	7	0.28
Influenza-Associated Hospitalizations	11	11	8	8	0.32
COVID-19-Associated Hospitalizations	102	137	85	79	3.16

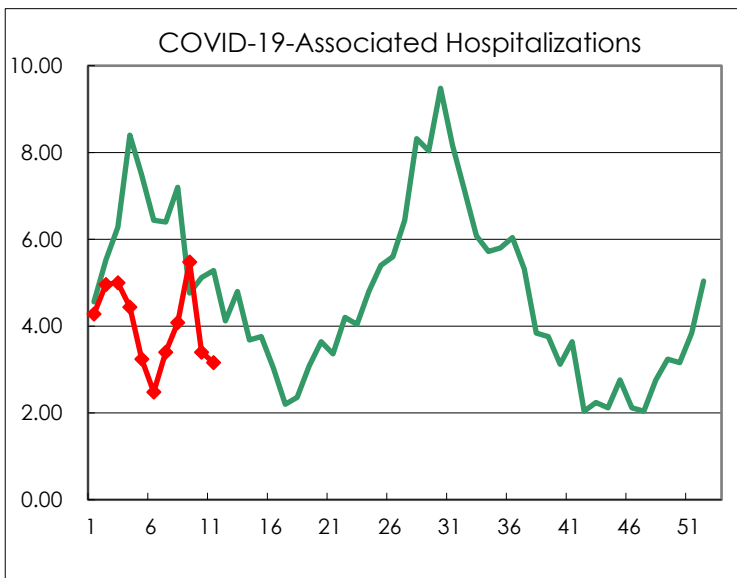
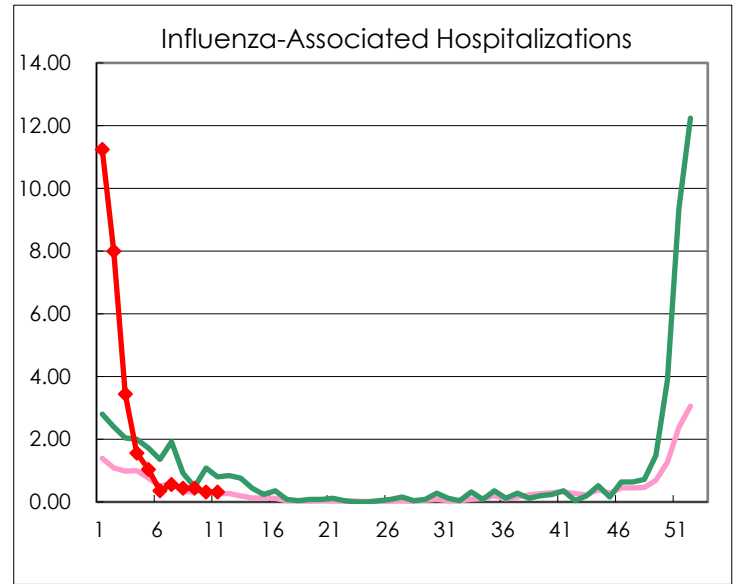
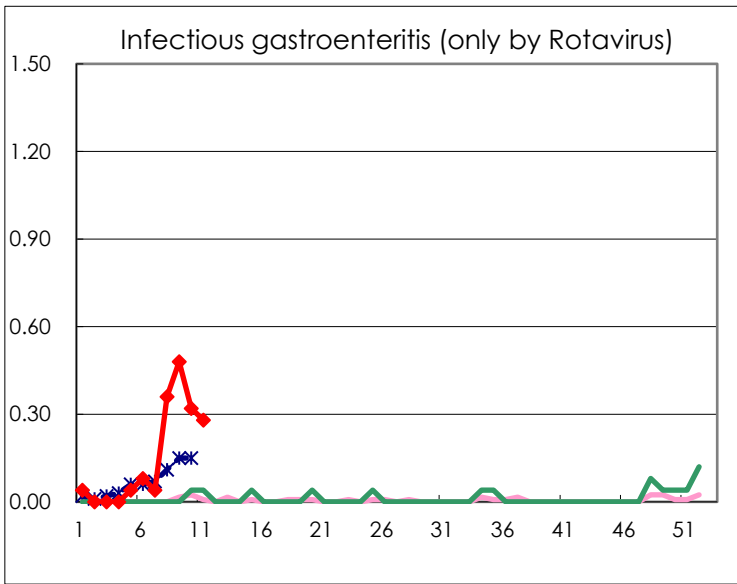
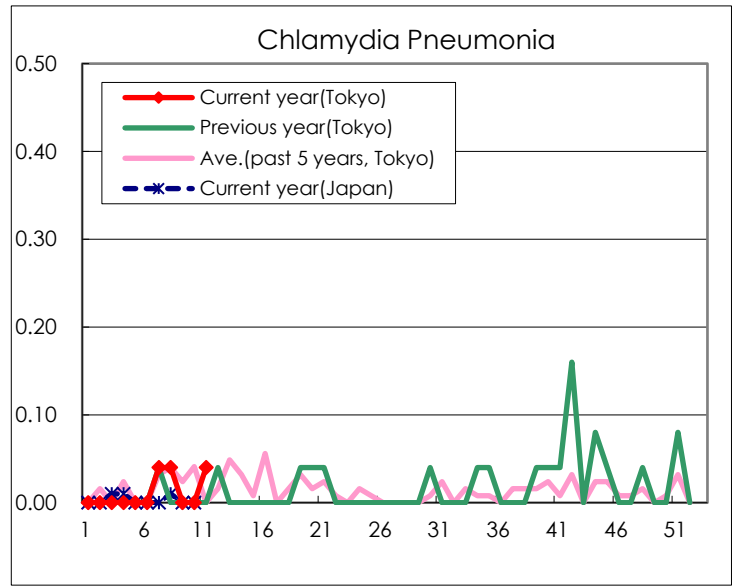
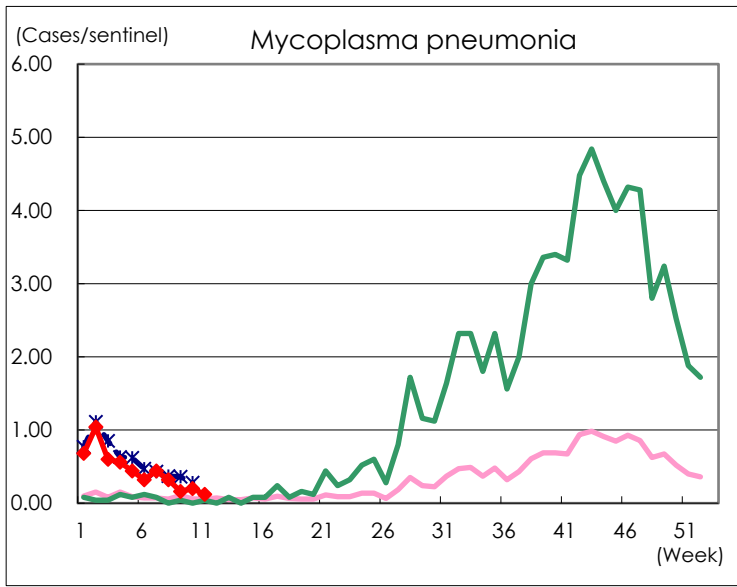
(Blank means 0.)

Disease Trend Graph (weekly reported cases per sentinel in comparison)









Number of sentinel facilities for weekly reporting		
Types of sentinels	Number of sentinels	Sentinels having reported
Pediatric	264	263
Influenza COVID-19	419	418
Ophthalmic	39	39
Specially-designated	25	25