

---

INFECTIOUS DISEASES WEEKLY REPORT

# TOKYO IDWR

Tokyo Metropolitan Infectious Disease Surveillance Center

**21 March 2025 / Number 12**  
**( 3/17 ~ 3/23 )**

## Surveillance System in Tokyo, Japan

The infectious diseases which all physicians must report  
All physicians must report to health centers the incidence of the diseases which are shown at page one. Health centers electronically report the individual cases to Tokyo Metropolitan Infectious Disease Surveillance Center.

The infectious diseases required to be reported by the sentinels  
The numbers of patients who visit the sentinel clinics or hospitals during a week are reported to health centers in Tokyo. And they electronically report the numbers to Tokyo Metropolitan Infectious Disease Surveillance Center. We have about 500 sentinel clinics and hospitals in Tokyo.

Tokyo Metropolitan Institute of Public Health

TEL:81-3-3363-3213 FAX:81-3-5332-7365

e-mail:tmiph@section.metro.tokyo.jp

URL:idsc.tmiph.metro.tokyo.lg.jp/

---

Number of patients with the diseases which all physicians must report

Category	Diseases	Tokyo				
		9th	10th	11th	12th	Cum 2024
I	Ebola hemorrhagic fever					
	Crimean-Congo hemorrhagic fever					
	Smallpox					
	South American hemorrhagic fever					
	Plague					
	Marburg disease					
	Lassa fever					
II	Acute poliomyelitis					
	Tuberculosis	37	29	38	22	393
	Diphtheria					
	Severe Acute Respiratory Syndrome(SARS)					
	Middle East Respiratory Syndrome (MERS)					
	Avian influenza H5N1					
Avian influenza H7N9						
III	Cholera					
	Shigellosis			1	1	3
	Enterohemorrhagic Escherichia coli infection	1	1	2	6	29
	Typhoid fever					1
	Paratyphoid fever					
IV	Hepatitis E	3	4	2	1	24
	West Nile fever					
	Hepatitis A		1			3
	Echinococcosis					1
	Mpox					
	Yellow fever					
	Psittacosis		1			1
	Omsk hemorrhagic fever					
	Relapsing fever					
	Kyasanur forest disease					
	Q fever					
	Rabies					
	Coccidioidomycosis					
	Zika virus infection					
	Severe Fever with Thrombocytopenia Syndrome					
	Hemorrhagic fever with renal syndrome					
	Western equine encephalitis					
	Tick-borne encephalitis					
	Anthrax					
	Chikungunya fever					
	Scrub typhus(Tsutsugamushi disease)					3
	Dengue fever	1	5		1	16
	Eastern equine encephalitis					
	Avian influenza (excluding H5N1 and H7N9)					
	Nipah virus infection					
	Japanese spotted fever					
	Japanese encephalitis					
	Hantavirus pulmonary syndrome					
	Herpes B virus infection					
	Glanders					
	Brucellosis					
	Venezuelan equine encephalitis					
Hendra virus infection						
Epidemic typhus						
Botulism						
Malaria					2	
Tularemia						
Lyme disease						
Lyssavirus infection(excluding rabies)						
Rift valley fever						
Melioidosis						
Legionellosis	2	2	6	6	39	
Leptospirosis						
Rocky mountain spotted fever						

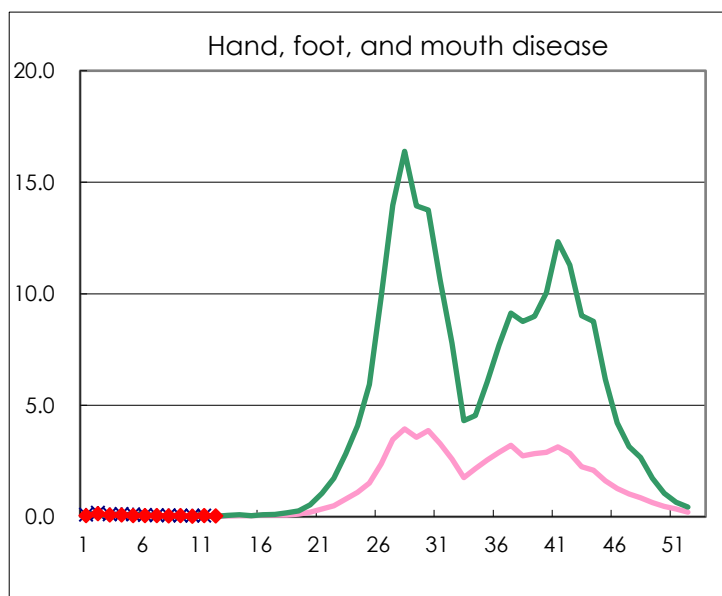
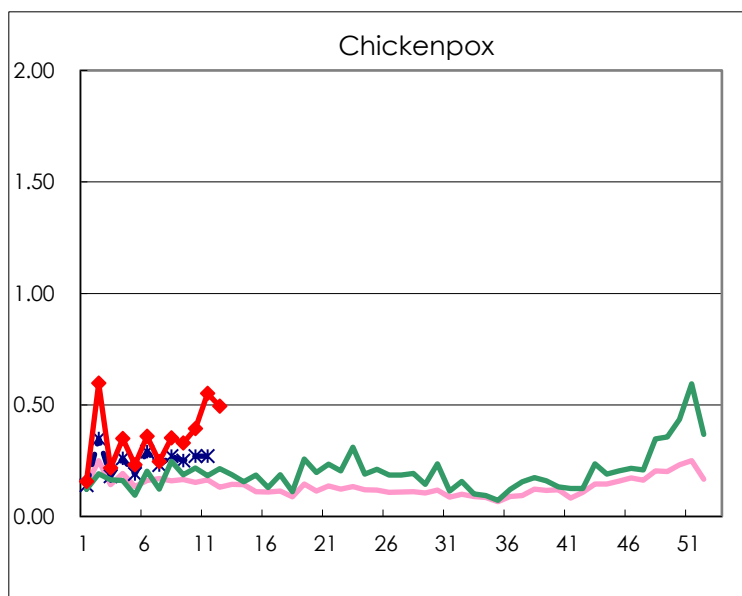
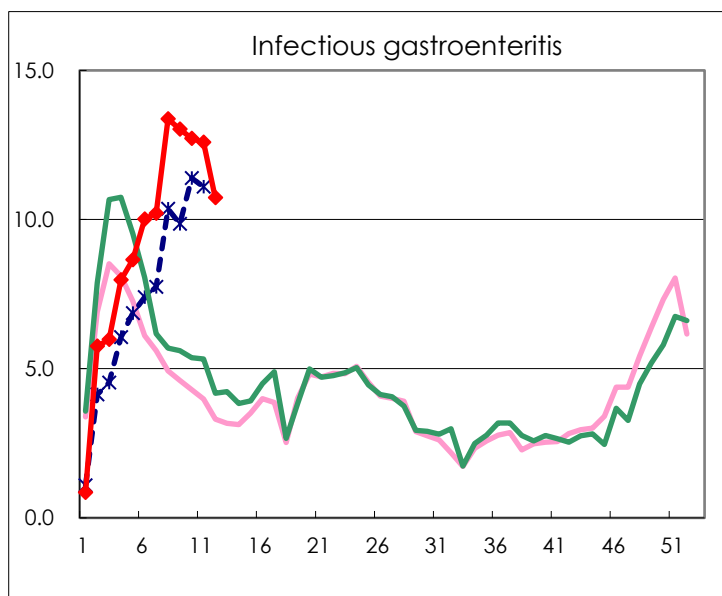
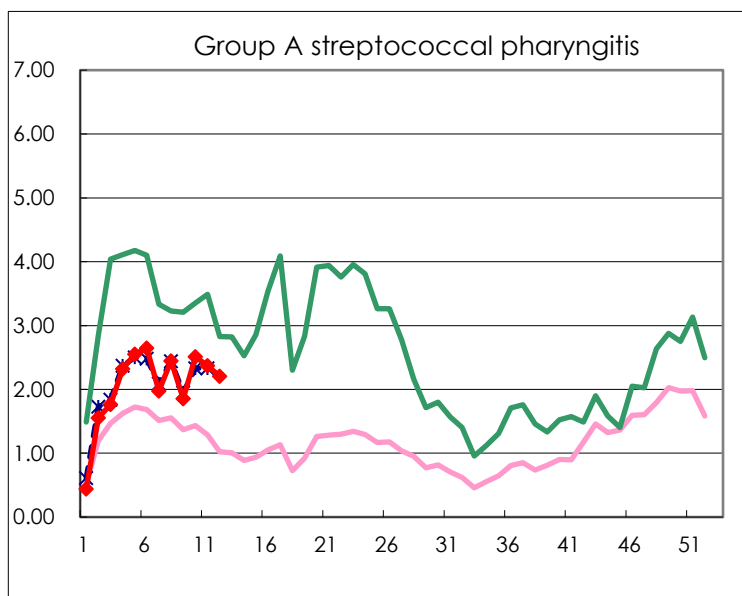
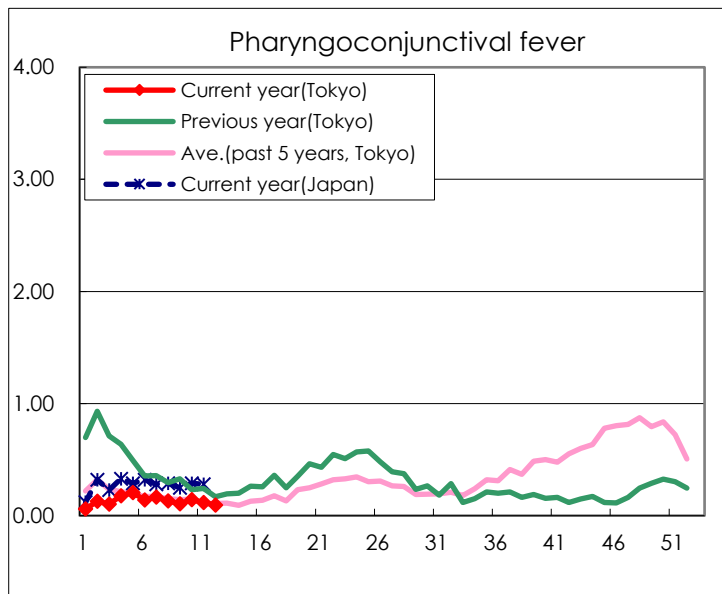
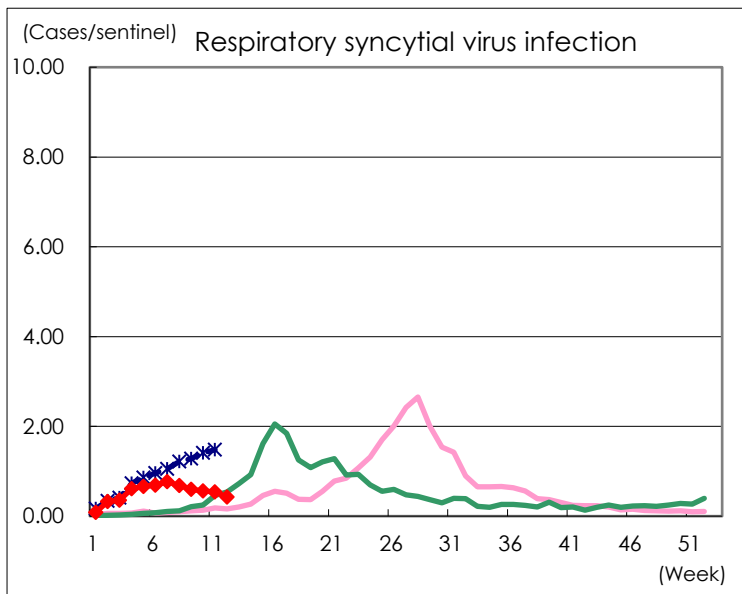
Category	Diseases	Tokyo				
		9th	10th	11th	12th	Cum 2024
V	Amebiasis	3	3	3		21
	Viral hepatitis(excluding hepatitis A and E)	1	3		1	13
	CRE infection	6	6	5	6	45
	Acute Flaccid Paralysis (excluding Acute poliomyelitis)					
	Acute encephalitis(excluding JE and WNE)			1	1	17
	Cryptosporidiosis			1		2
	Creutzfeldt-Jakob disease					1
	Severe invasive streptococcal infections(TSLS)	1	3	3	2	35
	Acquired immunodeficiency syndrome (AIDS)	2	6	4	6	52
	Giardiasis					2
	Invasive <i>Haemophilus influenzae</i> disease	4	1		1	17
	Invasive meningococcal disease		1			3
	Invasive pneumococcal disease	3	6	9	9	128
	Varicella (limited to hospitalized case)	1	3	5	1	21
	Congenital rubella syndrome					
	Syphilis	75	74	77	72	801
	Disseminated cryptococcosis					6
	Tetanus		2	1		4
	Vancomycin-resistant <i>S. aureus</i> infection					
	Vancomycin-resistant <i>Enterococcus</i> infection					3
	Pertussis	31	24	42	33	300
Rubella					2	
Measles			2	2	5	
MDRA infection						

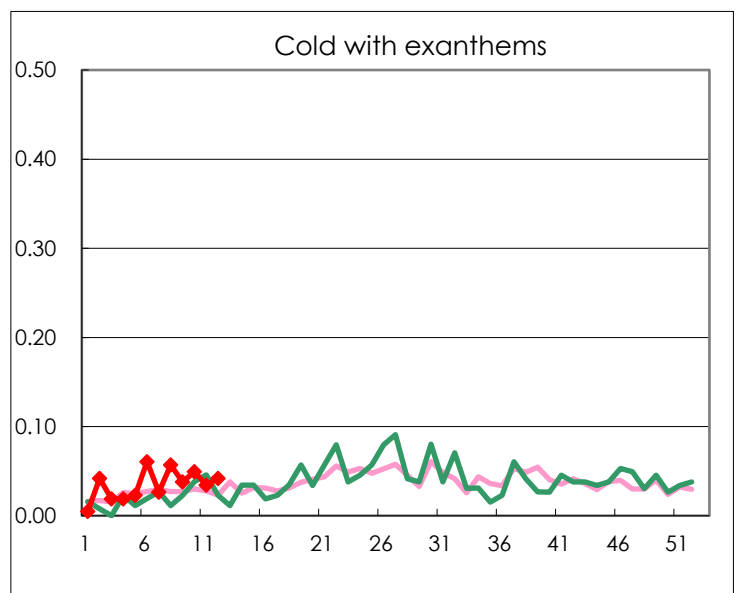
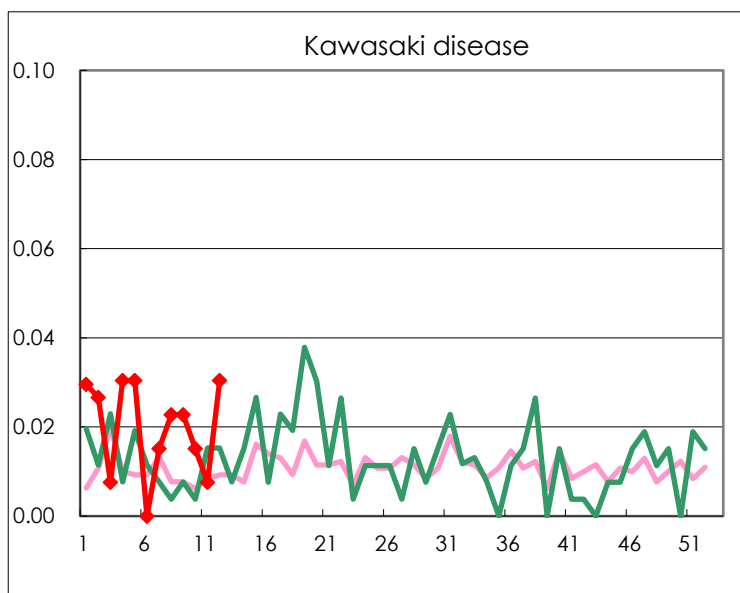
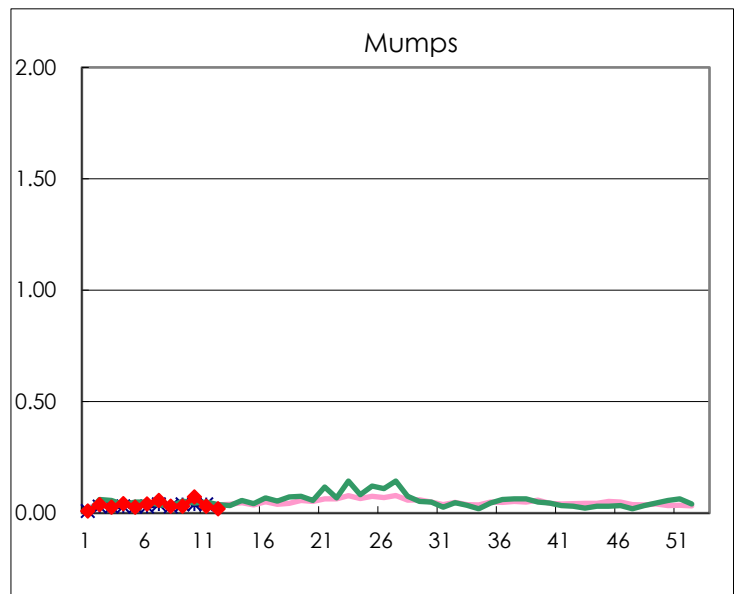
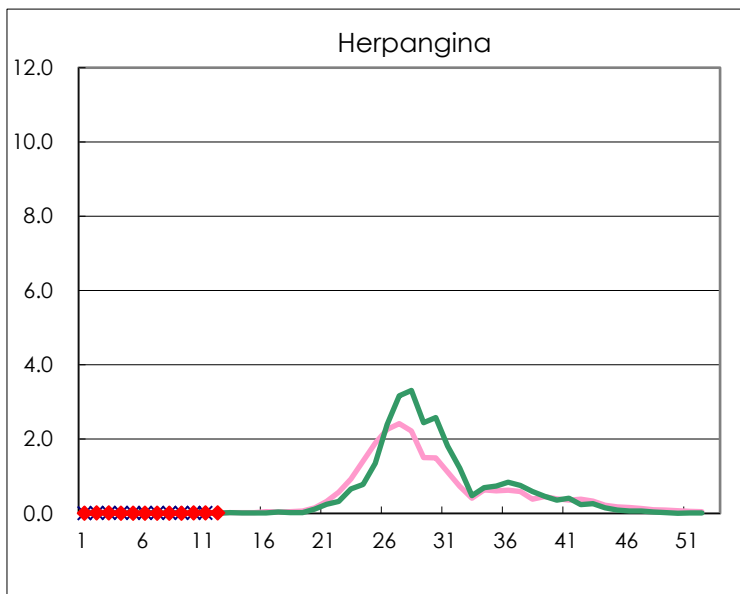
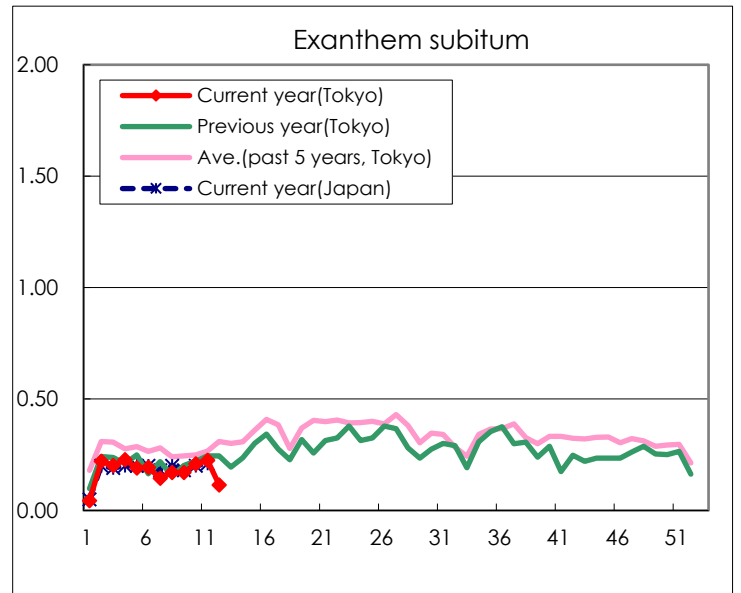
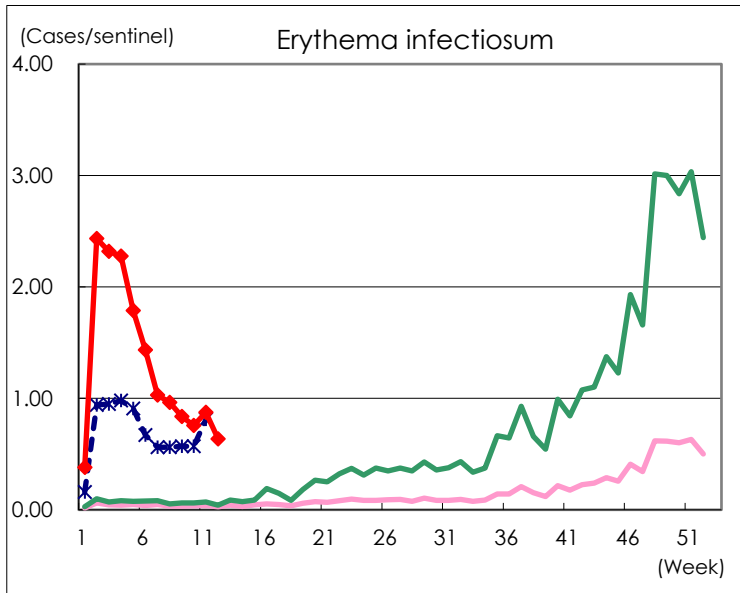
Number of patients with the diseases to be reported  
by the designated clinics and hospitals

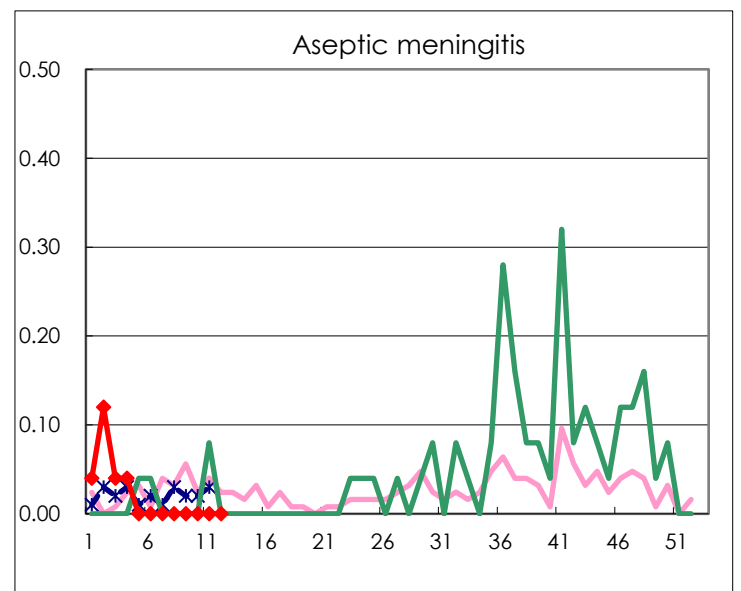
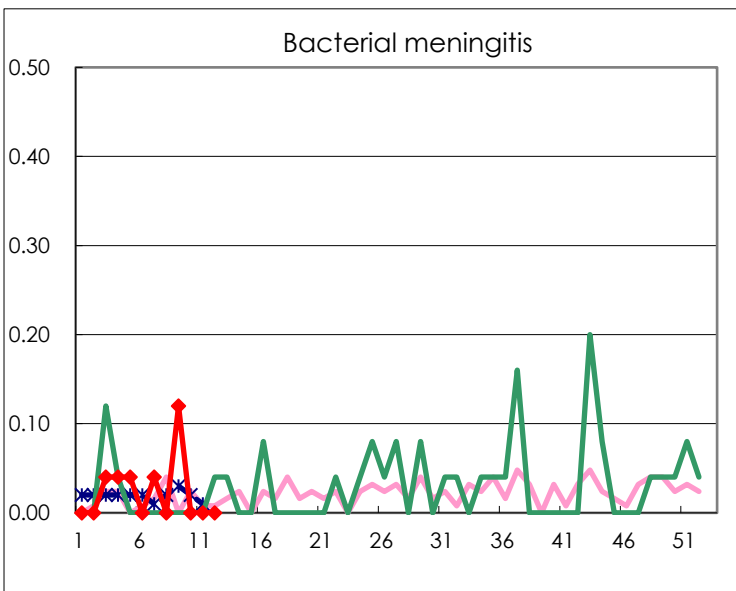
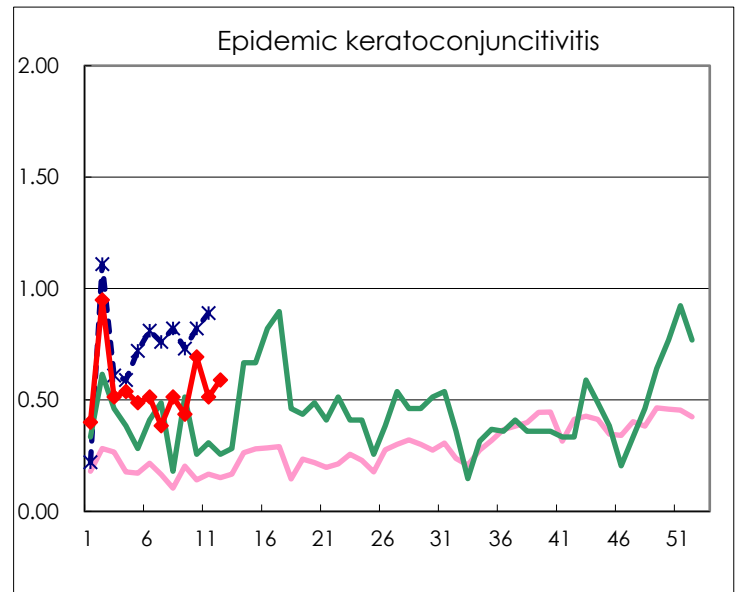
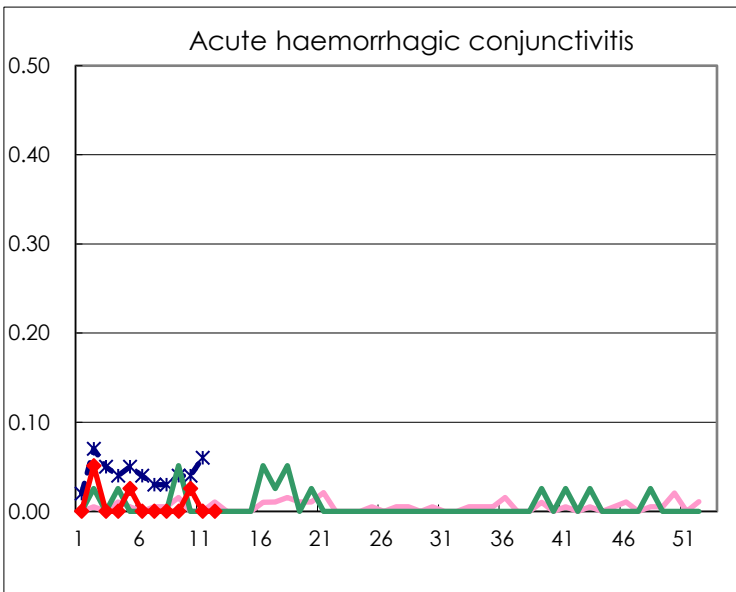
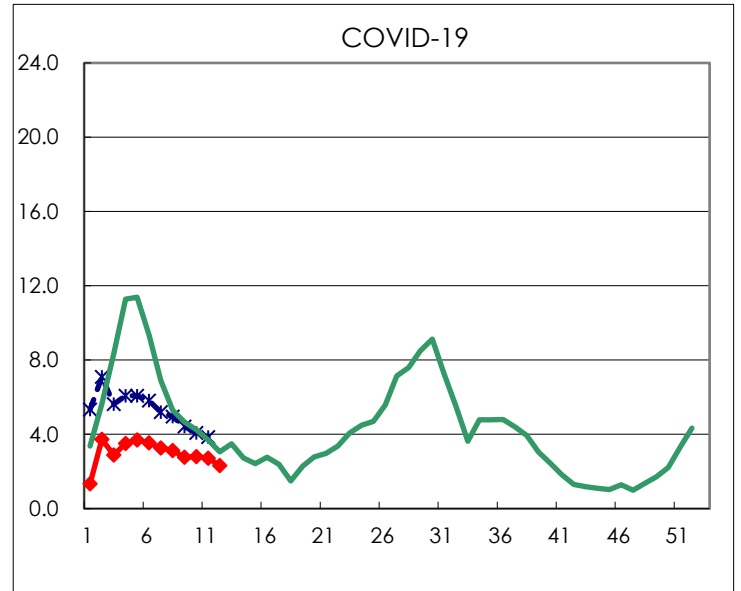
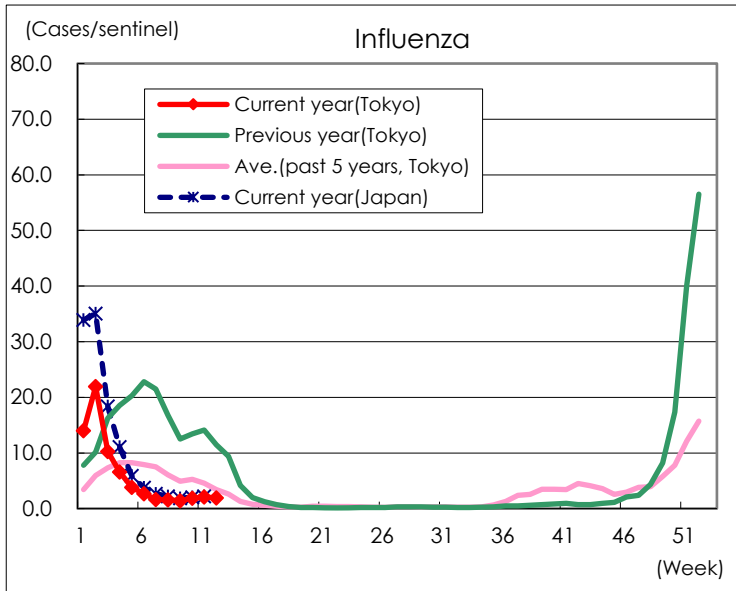
Diseases	Tokyo				
	9th	10th	11th	12th	/sentinel
Respiratory syncytial virus infection	157	149	141	112	0.43
Pharyngoconjunctival fever	28	38	31	25	0.10
Group A streptococcal pharyngitis	489	663	623	580	2.21
Infectious gastroenteritis	3,441	3,357	3,312	2,823	10.73
Chickenpox	87	104	145	130	0.49
Hand, foot, and mouth disease	12	4	12	10	0.04
Erythema infectiosum	221	200	230	167	0.63
Exanthem subitum	45	55	59	30	0.11
Herpangina	2	3	4	3	0.01
Mumps	8	19	8	5	0.02
Kawasaki disease	6	4	2	8	0.03
Cold with exanthems	10	13	9	11	0.04
Influenza	589	772	865	810	1.94
COVID-19	1,158	1,173	1,133	966	2.31
Acute hemorrhagic conjunctivitis		1			
Epidemic keratoconjunctivitis	17	27	20	23	0.59
Bacterial meningitis	3				
Aseptic meningitis					
<i>Mycoplasma pneumoniae</i>	4	5	3	2	0.08
Chlamydial pneumonia (excluding psittacosis)			1	1	0.04
Infectious gastroenteritis (only by Rotavirus)	12	8	7	9	0.36
Influenza-Associated Hospitalizations	11	8	8	12	0.48
COVID-19-Associated Hospitalizations	137	85	79	68	2.72

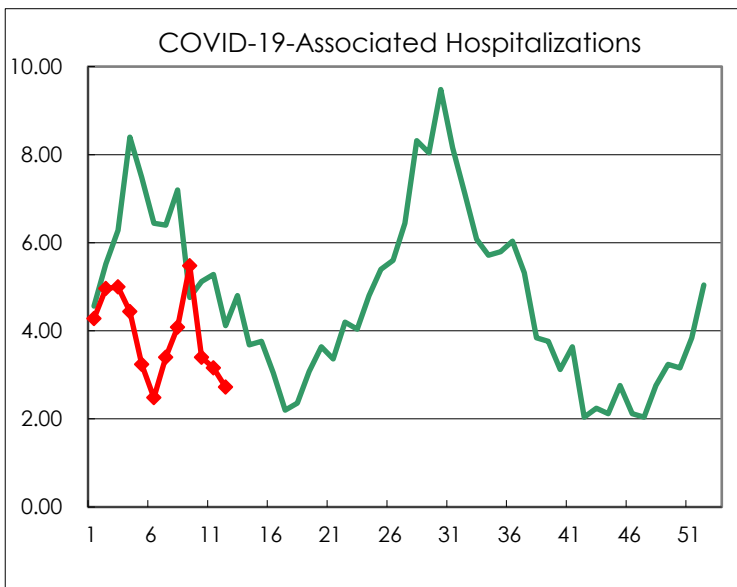
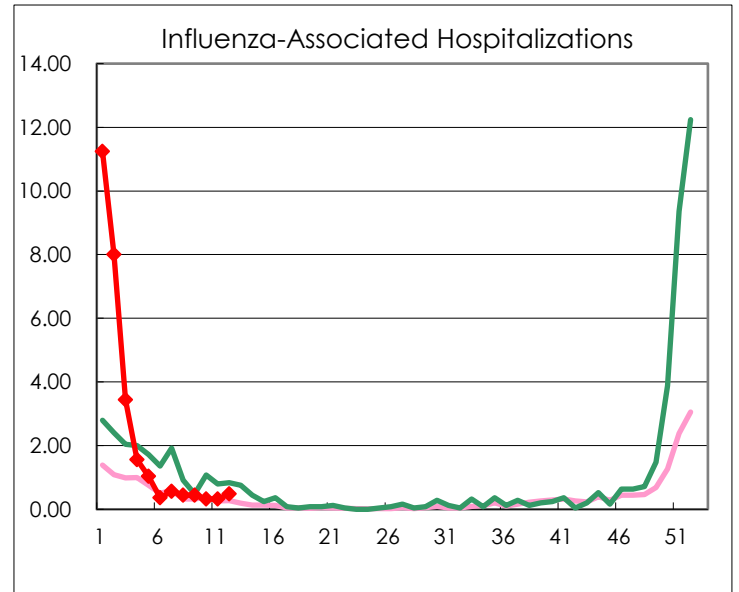
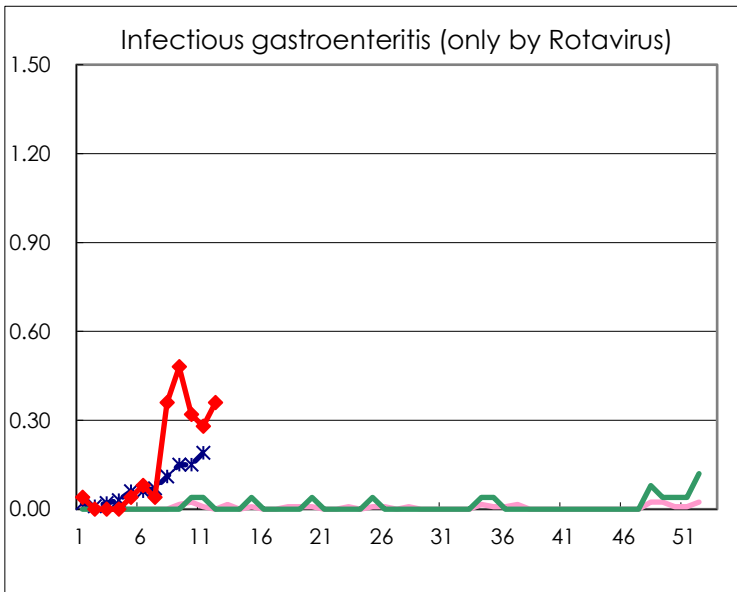
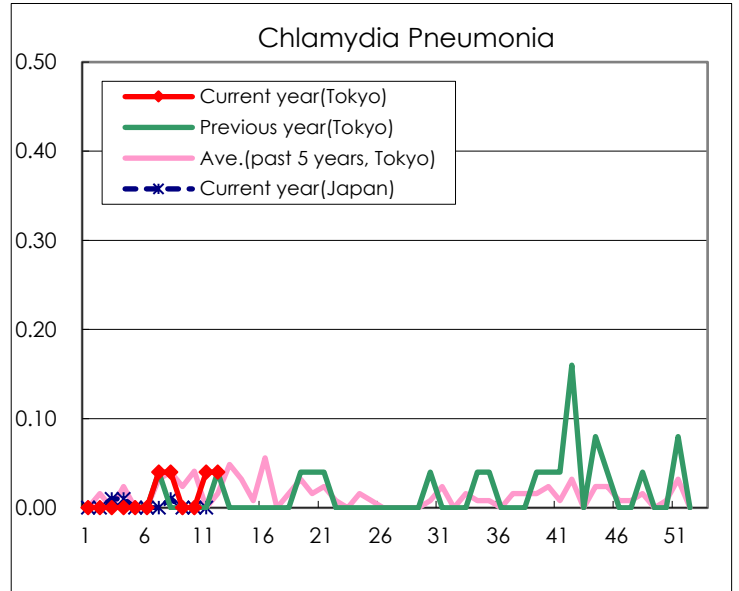
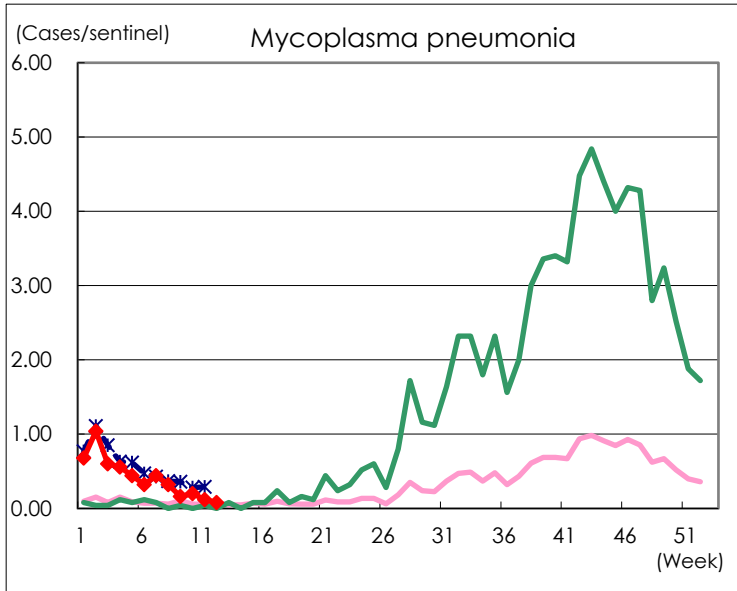
(Blank means 0.)

# Disease Trend Graph (weekly reported cases per sentinel in comparison)









Number of sentinel facilities for weekly reporting		
Types of sentinels	Number of sentinels	Sentinels having reported
Pediatric	264	263
Influenza COVID-19	419	418
Ophthalmic	39	39
Specially-designated	25	25