
INFECTIOUS DISEASES WEEKLY REPORT

TOKYO iDWR

Tokyo Metropolitan Infectious Disease Surveillance Center

5 March 2026 / Number 9
(2/23 ~ 3/1)

Surveillance System in Tokyo, Japan

The infectious diseases which all physicians must report
All physicians must report to health centers the incidence of the diseases which are shown at page one. Health centers electronically report the individual cases to Tokyo Metropolitan Infectious Disease Surveillance Center.

The infectious diseases required to be reported by the sentinels
The numbers of patients who visit the sentinel clinics or hospitals during a week are reported to health centers in Tokyo. And they electronically report the numbers to Tokyo Metropolitan Infectious Disease Surveillance Center. We have about 500 sentinel clinics and hospitals in Tokyo.

Tokyo Metropolitan Institute of Public Health

TEL:81-3-3363-3213 FAX:81-3-5332-7365

e-mail:tmiph@section.metro.tokyo.jp

URL:idsc.tmiph.metro.tokyo.lg.jp/

Number of patients with the diseases which all physicians must report

Category	Diseases	Tokyo				
		6th	7th	8th	9th	Cum 2026
I	Ebola hemorrhagic fever					
	Crimean-Congo hemorrhagic fever					
	Smallpox					
	South American hemorrhagic fever					
	Plague					
	Marburg disease					
	Lassa fever					
II	Acute poliomyelitis					
	Tuberculosis	55	38	36	26	308
	Diphtheria					
	Severe Acute Respiratory Syndrome(SARS)					
	Middle East Respiratory Syndrome (MERS)					
	Avian influenza H5N1					
	Avian influenza H7N9					
III	Cholera					
	Shigellosis			1		5
	Enterohemorrhagic Escherichia coli infection	2	8	4	2	36
	Typhoid fever					2
	Paratyphoid fever					1
IV	Hepatitis E	8	3	1	2	30
	West Nile fever					
	Hepatitis A		1	1		4
	Echinococcosis					
	Mpox	5	3	1	1	18
	Yellow fever					
	Psittacosis					
	Omsk hemorrhagic fever					
	Relapsing fever					
	Kyasanur forest disease					
	Q fever					
	Rabies					
	Coccidioidomycosis					
	Zika virus infection					
	Severe Fever with Thrombocytopenia Syndrome					
	Hemorrhagic fever with renal syndrome					
	Western equine encephalitis					
	Tick-borne encephalitis					
	Anthrax					
	Chikungunya fever					
	Scrub typhus(Tsutsugamushi disease)					
	Dengue fever	1		1		5
	Eastern equine encephalitis					
	Avian influenza (excluding H5N1 and H7N9)					
	Nipah virus infection					
	Japanese spotted fever					
	Japanese encephalitis					
	Hantavirus pulmonary syndrome					
	Herpes B virus infection					
	Glanders					
	Brucellosis					
	Venezuelan equine encephalitis					
	Hendra virus infection					
Epidemic typhus						
Botulism						
Malaria						
Tularemia						
Lyme disease						
Lyssavirus infection(excluding rabies)						
Rift valley fever						
Melioidosis						
Legionellosis	4	6	3	4	31	
Leptospirosis					1	
Rocky mountain spotted fever						

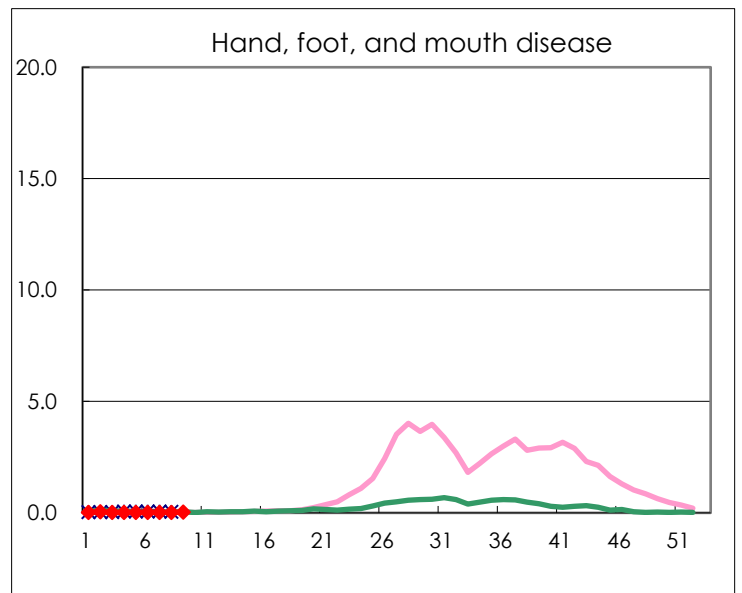
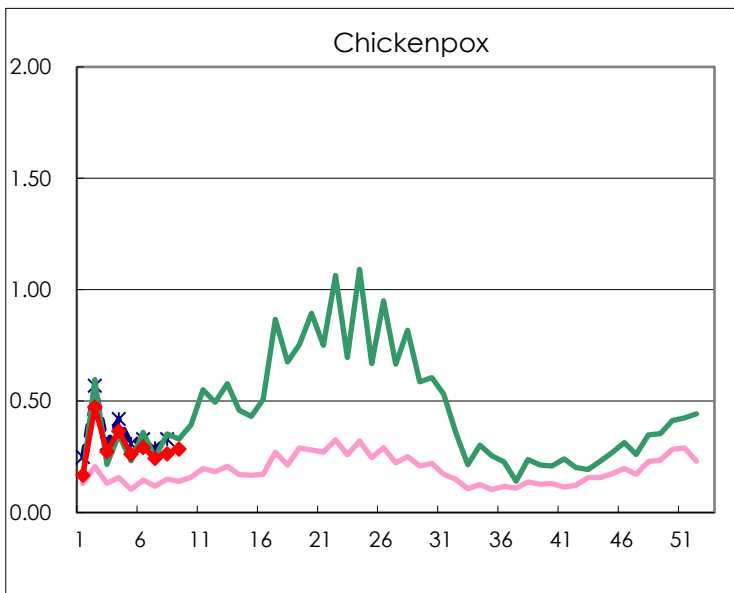
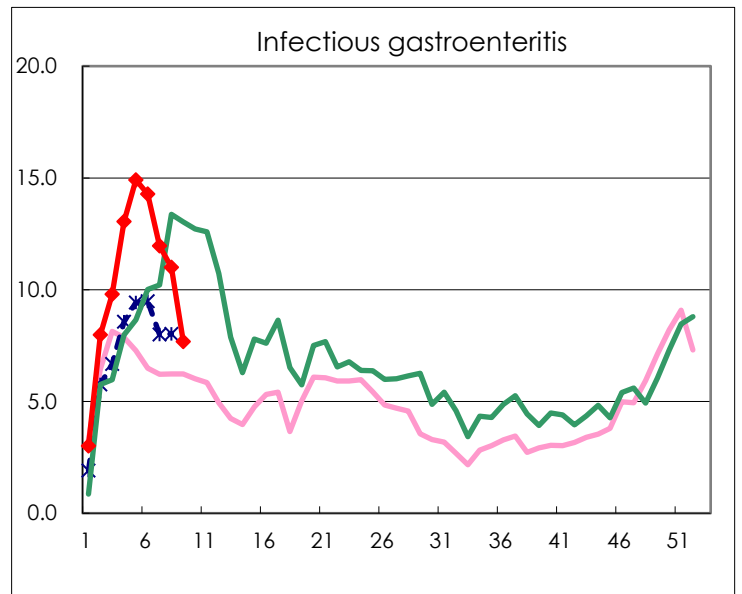
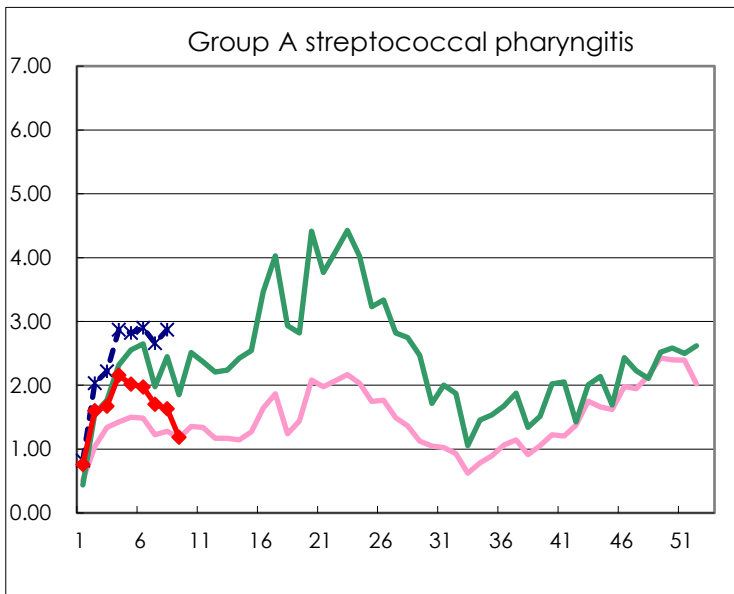
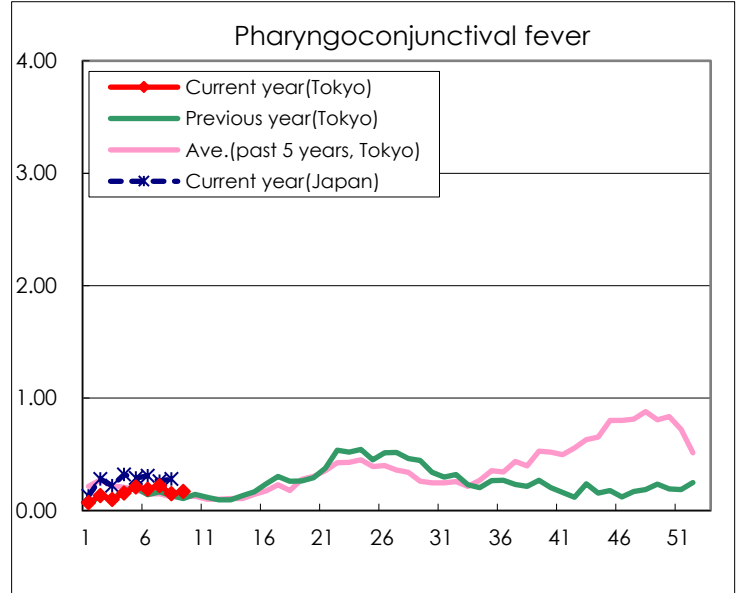
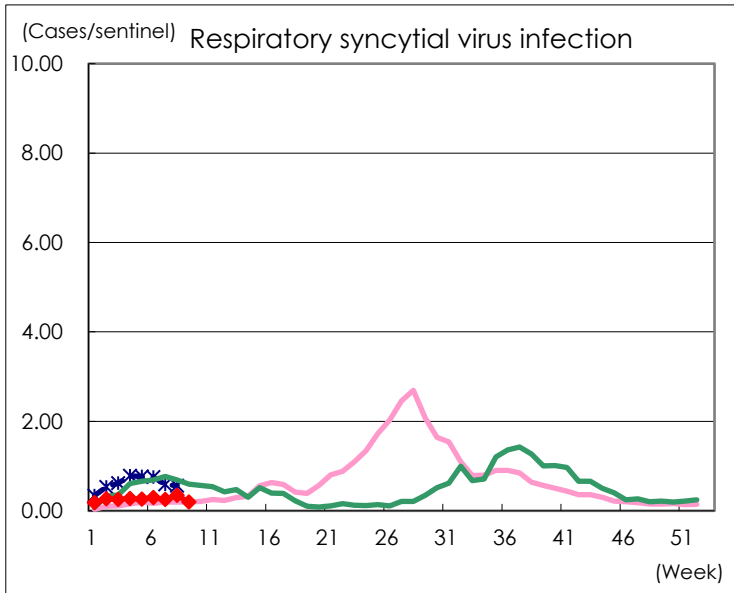
Category	Diseases	Tokyo				
		6th	7th	8th	9th	Cum 2026
V	Amebiasis	2	4	2		16
	Viral hepatitis(excluding hepatitis A and E)			2	2	9
	CRE infection	2	5	3	1	17
	Acute Flaccid Paralysis (excluding Acute poliomyelitis)	1				5
	Acute encephalitis(excluding JE and WNE)		2		1	4
	Cryptosporidiosis					1
	Creutzfeldt-Jakob disease	1		1		3
	Severe invasive streptococcal infections(TSLS)	6	2	4	3	30
	Acquired immunodeficiency syndrome (AIDS)	4	9	7	3	52
	Giardiasis	2				3
	Invasive <i>Haemophilus influenzae</i> disease	2	2	2	4	14
	Invasive meningococcal disease	1				1
	Invasive pneumococcal disease	7	7	9	8	58
	Varicella (limited to hospitalized case)	1	1	1		16
	Congenital rubella syndrome					
	Syphilis	57	62	47	46	451
	Disseminated cryptococcosis	1	1	1		6
	Tetanus		1			3
	Vancomycin-resistant <i>S. aureus</i> infection					
	Vancomycin-resistant <i>Enterococcus</i> infection	1				2
	Pertussis	18	10	15	11	195
	Rubella					1
	Measles	3		1	3	10
MDRA infection						

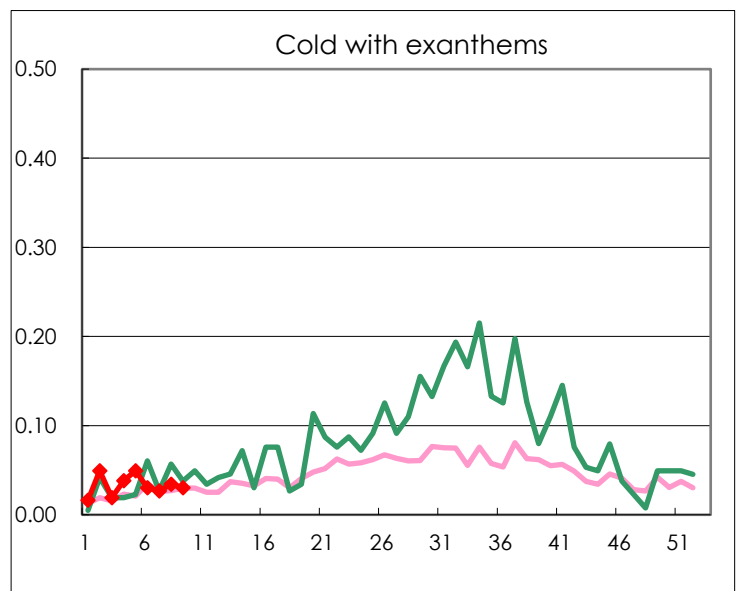
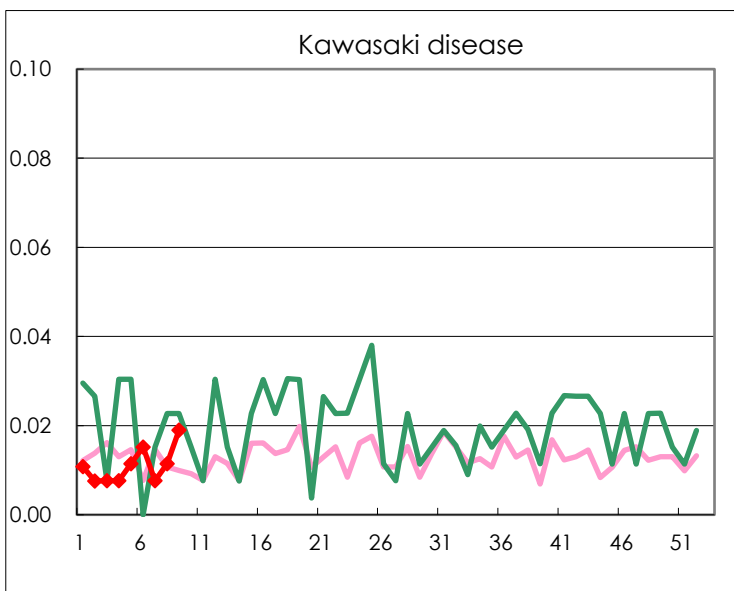
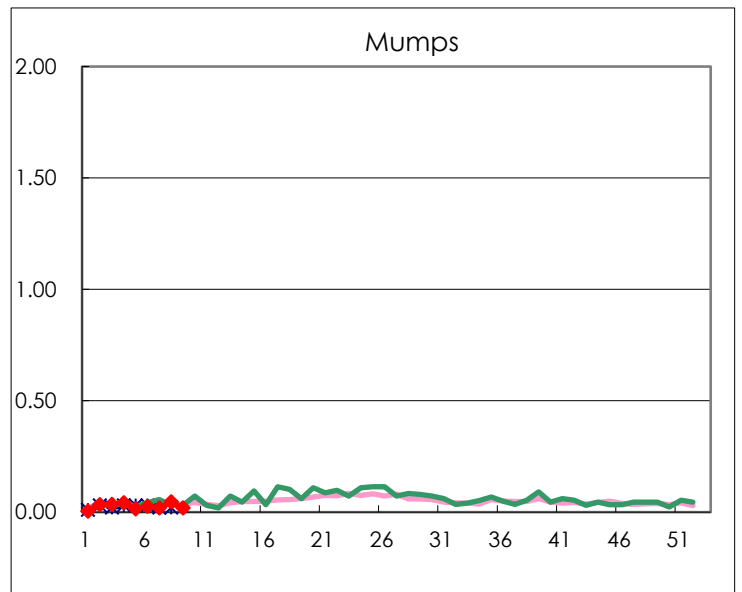
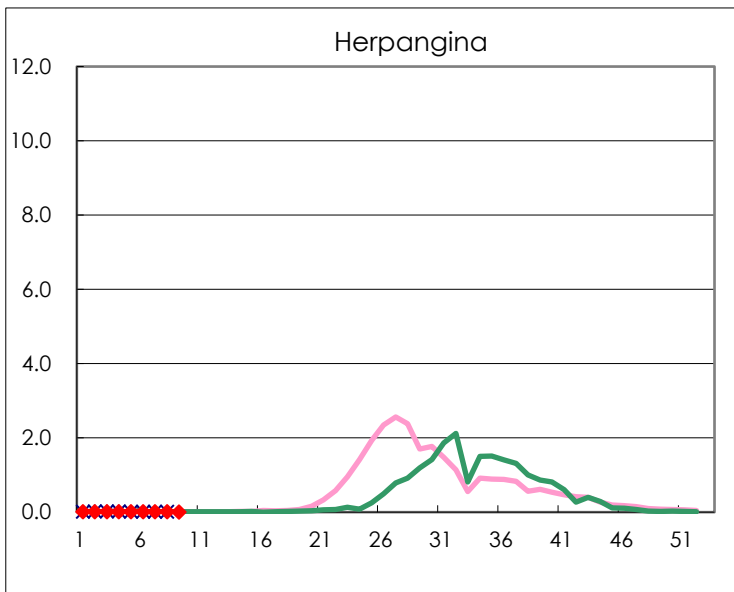
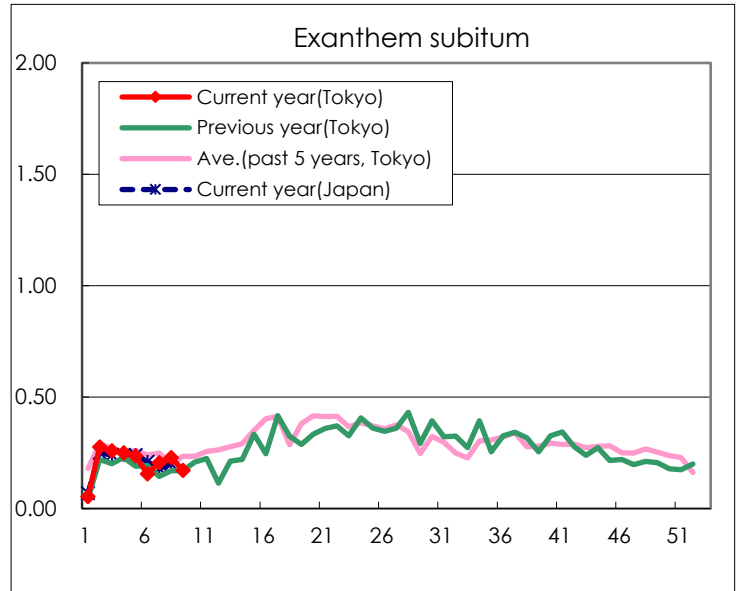
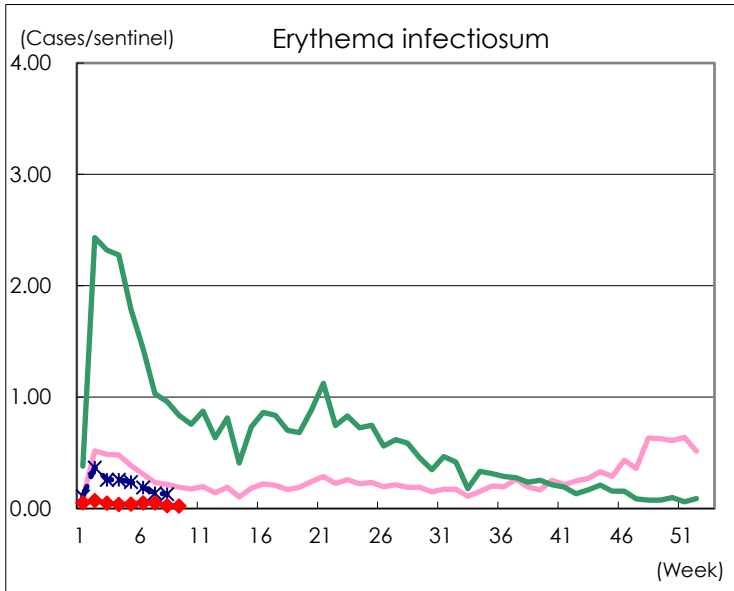
Number of patients with the diseases to be reported
by the designated clinics and hospitals

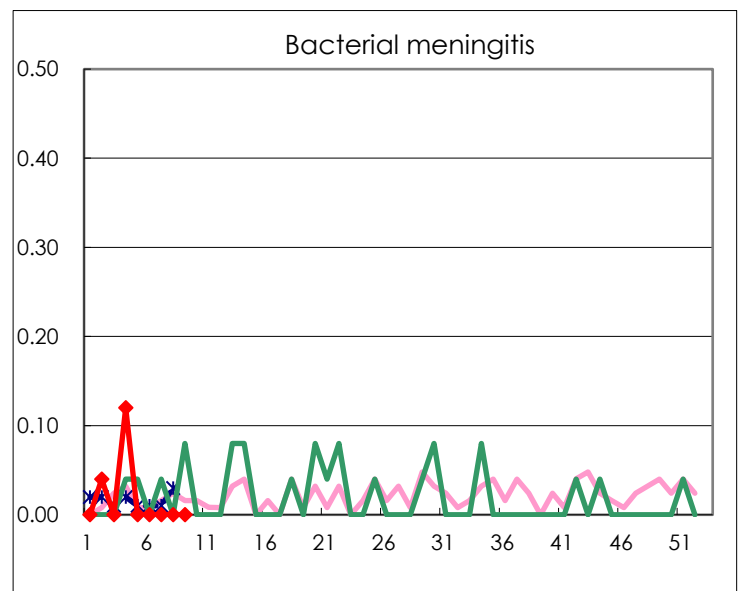
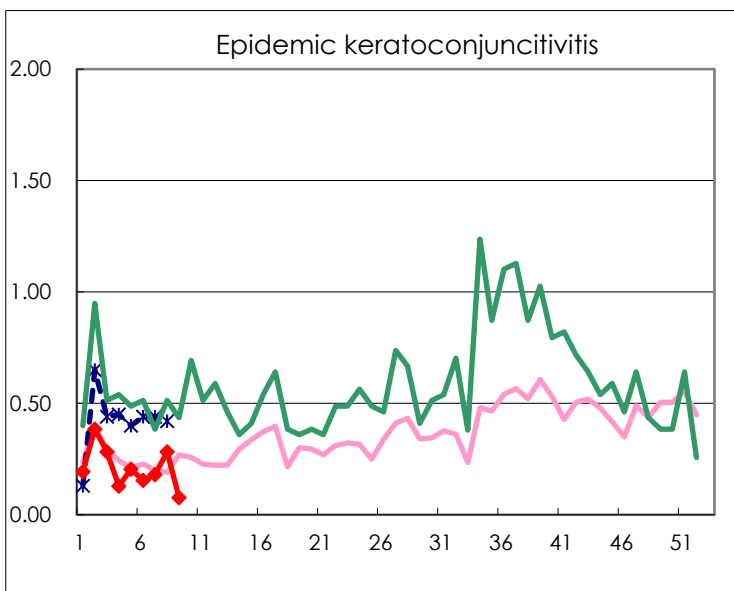
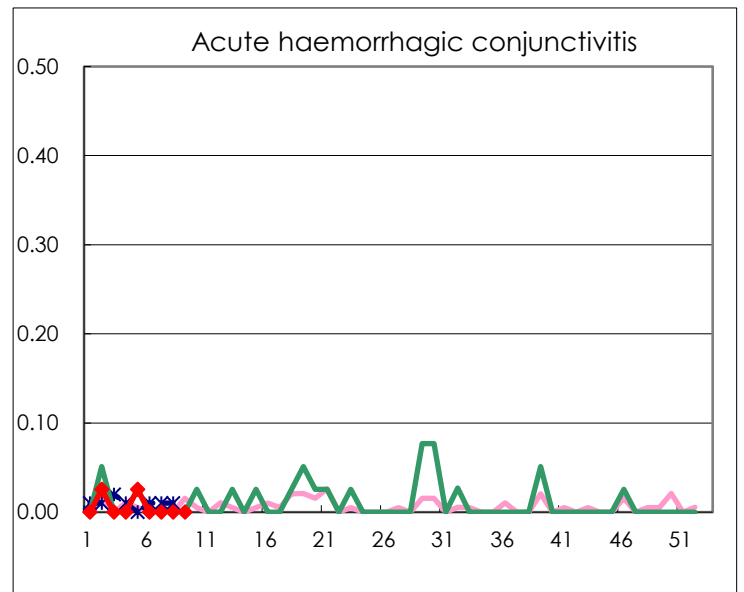
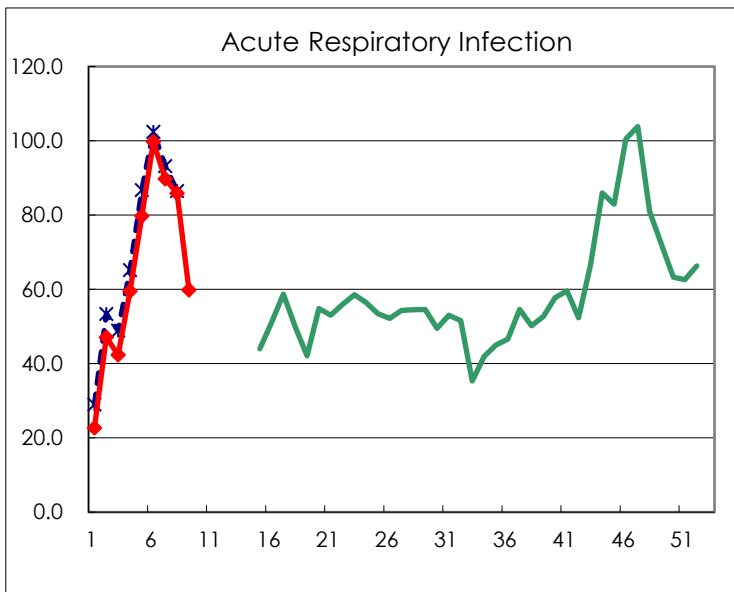
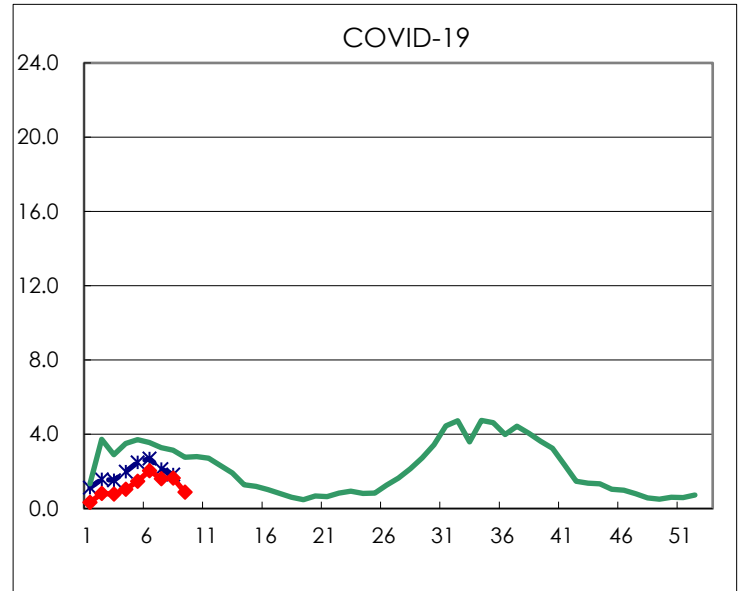
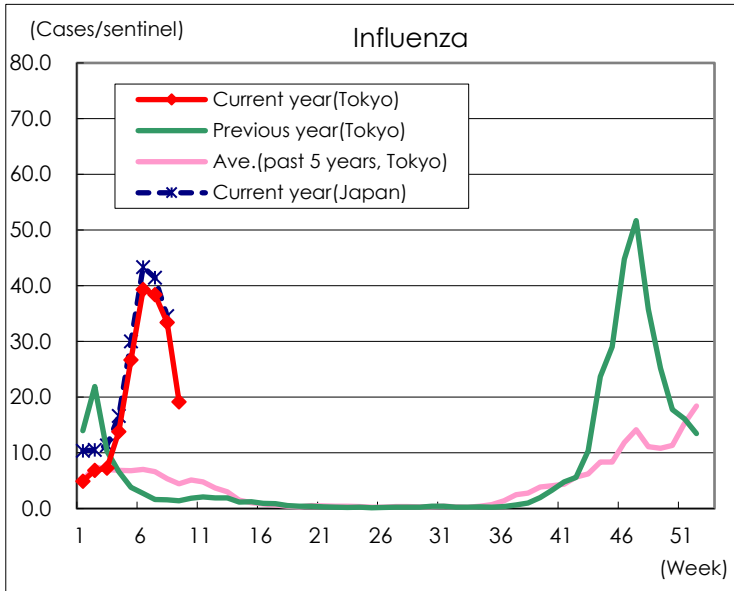
Diseases	Tokyo				
	6th	7th	8th	9th	/sentinel
Respiratory syncytial virus infection	78	66	90	51	0.19
Pharyngoconjunctival fever	50	58	39	45	0.17
Group A streptococcal pharyngitis	519	448	427	311	1.18
Infectious gastroenteritis	3,756	3,145	2,880	2,019	7.68
Chickenpox	77	64	69	75	0.29
Hand, foot, and mouth disease	7	7	4	11	0.04
Erythema infectiosum	14	14	7	6	0.02
Exanthem subitum	41	54	60	45	0.17
Herpangina	3	2	2		
Mumps	7	5	12	5	0.02
Kawasaki disease	4	2	3	5	0.02
Cold with exanthems	8	7	9	8	0.03
Influenza	16,393	16,051	13,932	8,016	19.18
COVID-19	853	669	686	373	0.89
Acute Respiratory Infection	41,579	37,529	35,825	25,025	59.87
Acute hemorrhagic conjunctivitis					
Epidemic keratoconjunctivitis	6	7	11	3	0.08
Bacterial meningitis					
Aseptic meningitis			1		
Mycoplasma pneumonia	7		3	4	0.16
Chlamydial pneumonia (excluding psittacosis)	3		2	2	0.08
Infectious gastroenteritis (only by Rotavirus)		2	7	5	0.20
Influenza-Associated Hospitalizations	70	64	56	43	1.72
COVID-19-Associated Hospitalizations	55	54	29	31	1.24

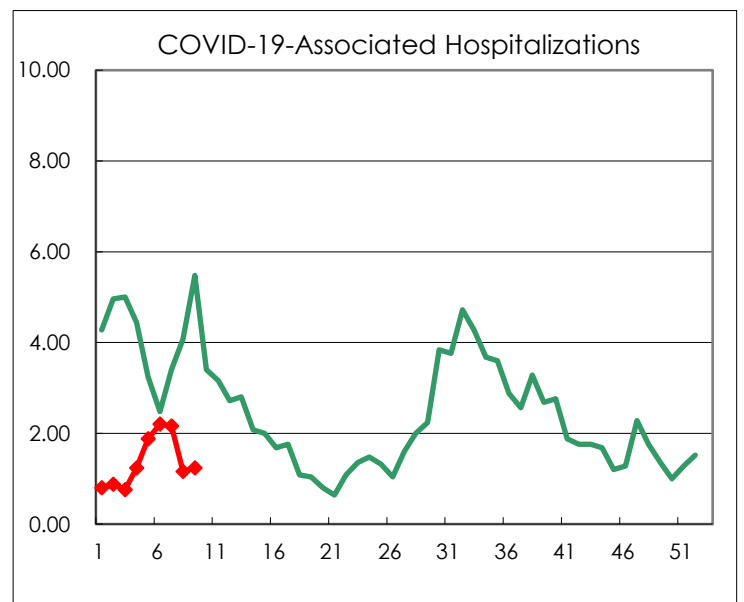
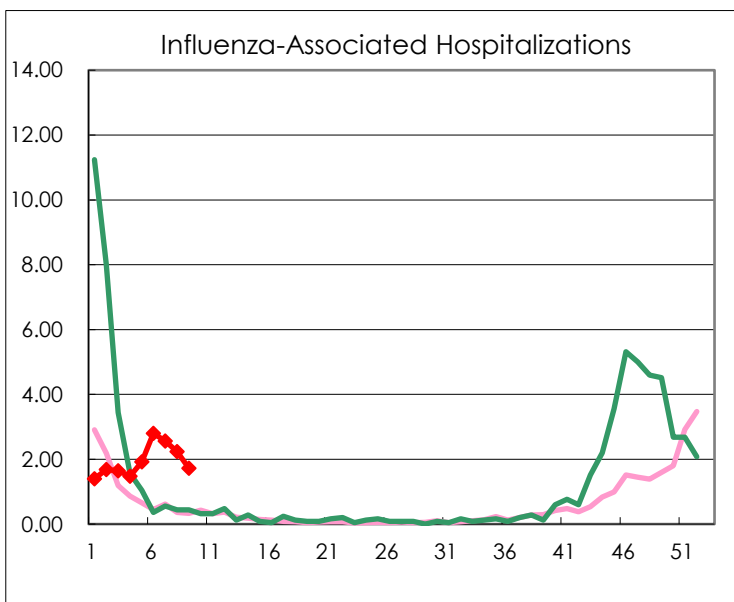
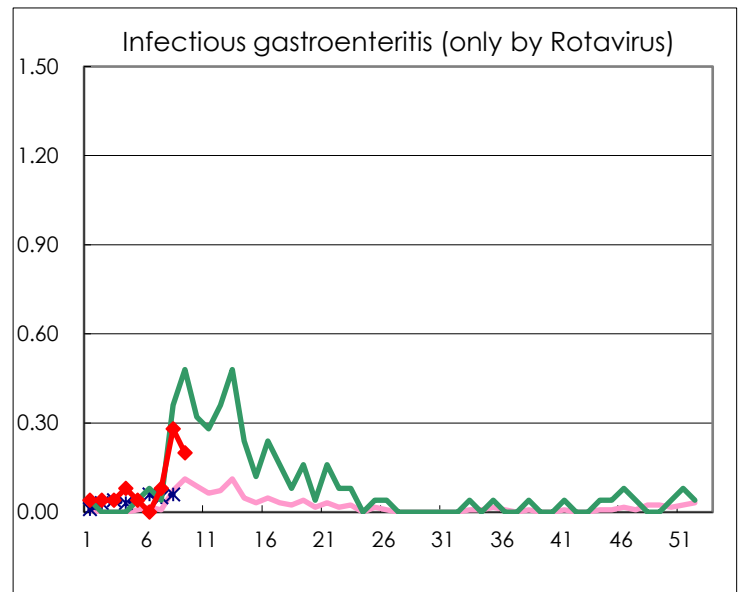
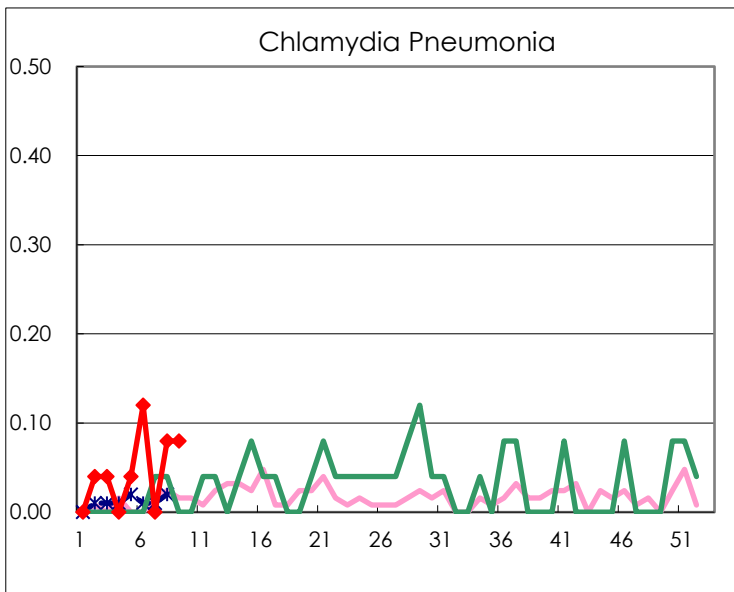
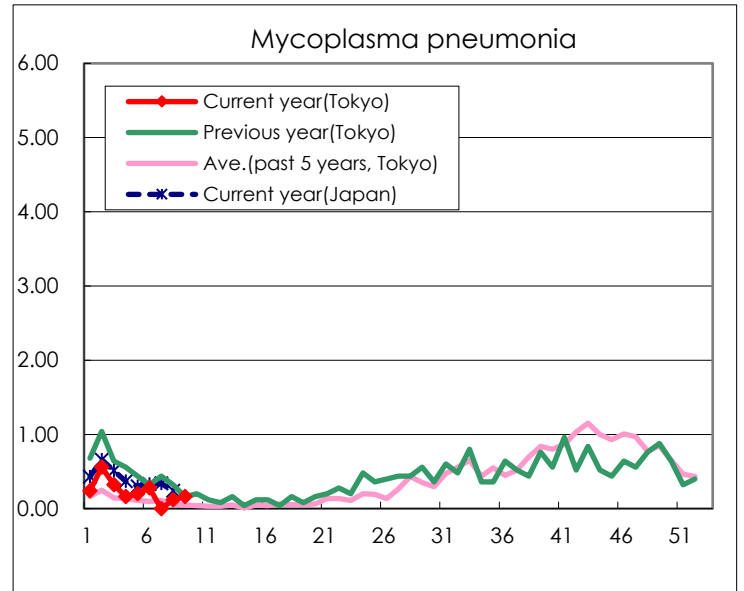
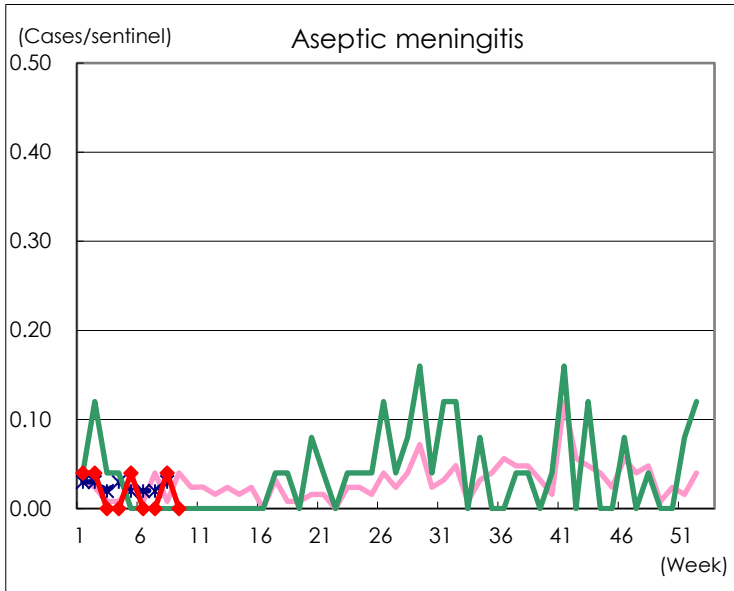
(Blank means 0.)

Disease Trend Graph (weekly reported cases per sentinel in comparison)









Number of sentinel facilities for weekly reporting		
Types of sentinels	Number of sentinels	Sentinels having reported
Pediatric	264	263
Acute Respiratory Infection	419	418
Ophthalmic	39	39
Specially- designated	25	25