
INFECTIOUS DISEASES WEEKLY REPORT

TOKYO iDWR

Tokyo Metropolitan Infectious Disease Surveillance Center

19 March 2026 / Number 11
(3/9 ~ 3/15)

Surveillance System in Tokyo, Japan

The infectious diseases which all physicians must report
All physicians must report to health centers the incidence of the diseases which are shown at page one. Health centers electronically report the individual cases to Tokyo Metropolitan Infectious Disease Surveillance Center.

The infectious diseases required to be reported by the sentinels
The numbers of patients who visit the sentinel clinics or hospitals during a week are reported to health centers in Tokyo. And they electronically report the numbers to Tokyo Metropolitan Infectious Disease Surveillance Center. We have about 500 sentinel clinics and hospitals in Tokyo.

Tokyo Metropolitan Institute of Public Health

TEL:81-3-3363-3213 FAX:81-3-5332-7365

e-mail:tmiph@section.metro.tokyo.jp

URL:idsc.tmiph.metro.tokyo.lg.jp/

Number of patients with the diseases which all physicians must report

Category	Diseases	Tokyo				
		8th	9th	10th	11th	Cum 2026
I	Ebola hemorrhagic fever					
	Crimean-Congo hemorrhagic fever					
	Smallpox					
	South American hemorrhagic fever					
	Plague					
	Marburg disease					
	Lassa fever					
II	Acute poliomyelitis					
	Tuberculosis	37	28	39	37	386
	Diphtheria					
	Severe Acute Respiratory Syndrome(SARS)					
	Middle East Respiratory Syndrome (MERS)					
	Avian influenza H5N1					
	Avian influenza H7N9					
III	Cholera					
	Shigellosis	1		2		7
	Enterohemorrhagic Escherichia coli infection	4	2		4	40
	Typhoid fever					2
	Paratyphoid fever					1
IV	Hepatitis E	1	2	1	3	34
	West Nile fever					
	Hepatitis A	1		1		5
	Echinococcosis					
	Mpox	1	1	2	3	24
	Yellow fever					
	Psittacosis					
	Omsk hemorrhagic fever					
	Relapsing fever					
	Kyasanur forest disease					
	Q fever					
	Rabies					
	Coccidioidomycosis					
	Zika virus infection					
	Severe Fever with Thrombocytopenia Syndrome					
	Hemorrhagic fever with renal syndrome					
	Western equine encephalitis					
	Tick-borne encephalitis					
	Anthrax					
	Chikungunya fever					
	Scrub typhus(Tsutsugamushi disease)					
	Dengue fever	1		1	1	7
	Eastern equine encephalitis					
	Avian influenza (excluding H5N1 and H7N9)					
	Nipah virus infection					
	Japanese spotted fever					
	Japanese encephalitis					
	Hantavirus pulmonary syndrome					
	Herpes B virus infection					
	Glanders					
	Brucellosis					
	Venezuelan equine encephalitis					
	Hendra virus infection					
	Epidemic typhus					
	Botulism					
	Malaria					
	Tularemia					
	Lyme disease					
	Lyssavirus infection(excluding rabies)					
	Rift valley fever					
Melioidosis						
Legionellosis	3	4	2		33	
Leptospirosis					1	
Rocky mountain spotted fever						

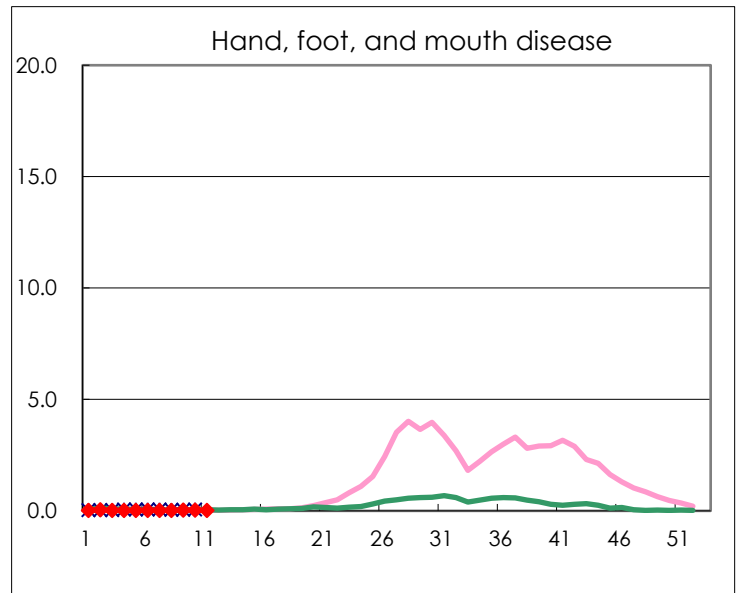
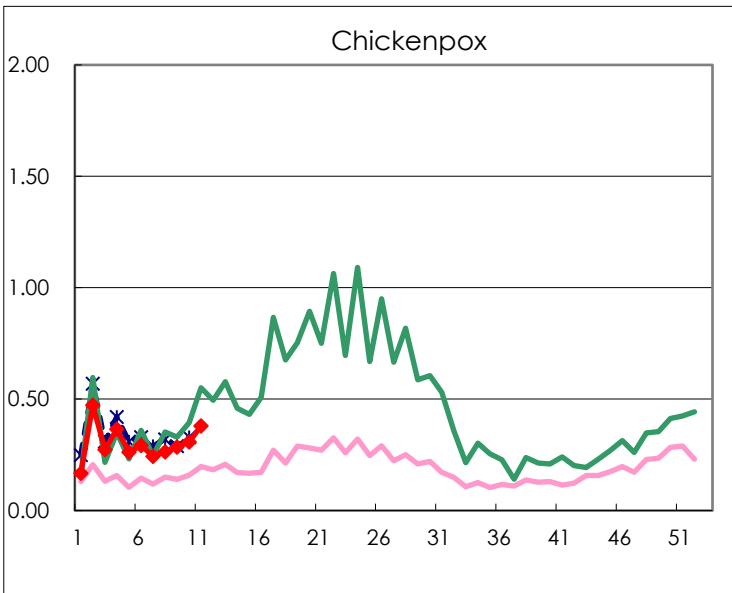
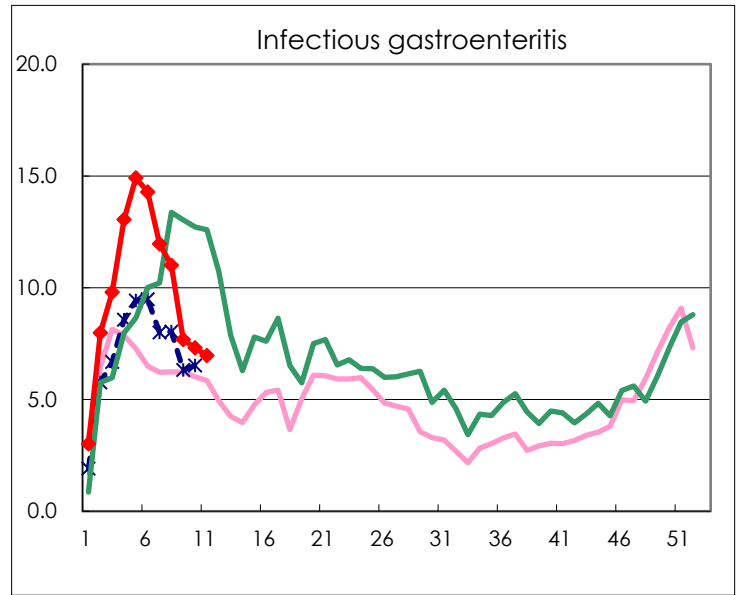
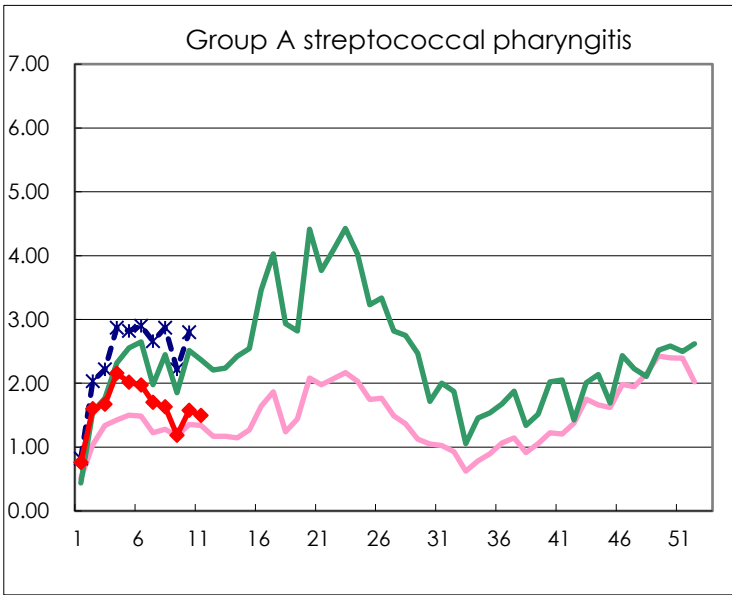
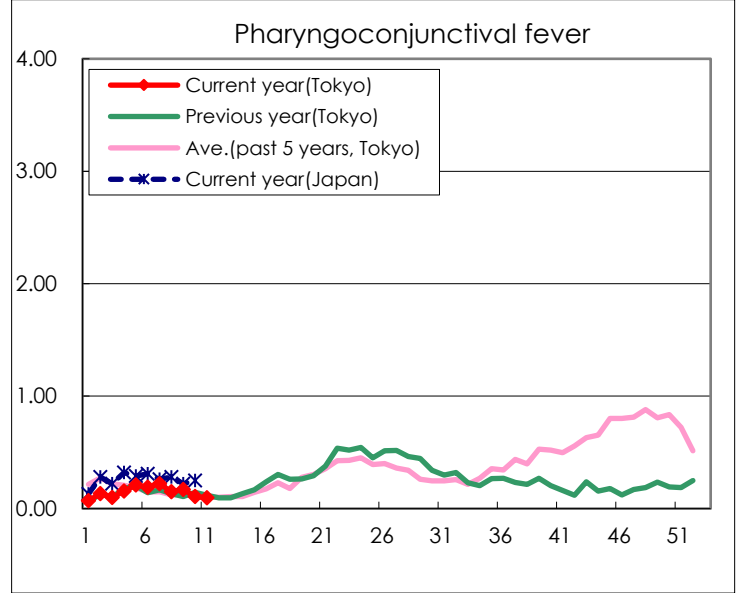
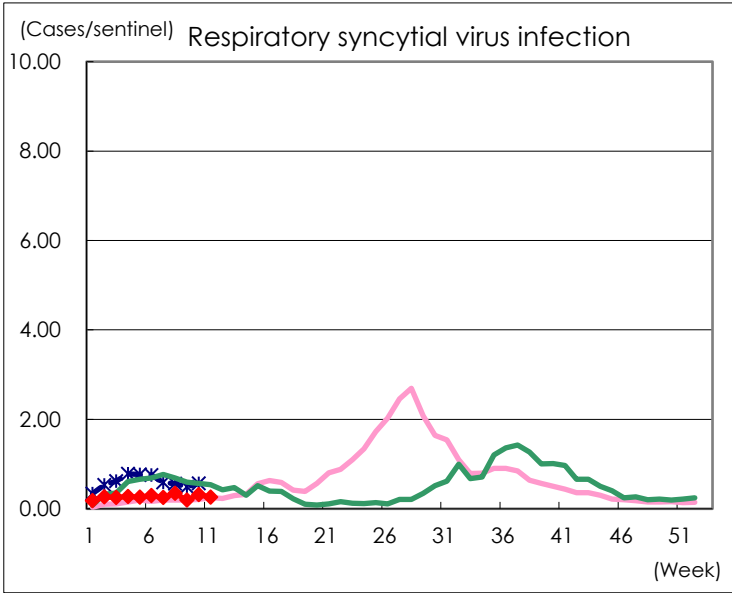
Category	Diseases	Tokyo				
		8th	9th	10th	11th	Cum 2026
V	Amebiasis	2		5	3	24
	Viral hepatitis(excluding hepatitis A and E)	2	2	1		10
	CRE infection	3	1	2	1	20
	Acute Flaccid Paralysis (excluding Acute poliomyelitis)					5
	Acute encephalitis(excluding JE and WNE)		1	1		5
	Cryptosporidiosis					1
	Creutzfeldt-Jakob disease	1		1		4
	Severe invasive streptococcal infections(TSLS)	4	3	3	1	34
	Acquired immunodeficiency syndrome (AIDS)	7	3	6	6	64
	Giardiasis					3
	Invasive <i>Haemophilus influenzae</i> disease	2	4		4	18
	Invasive meningococcal disease					1
	Invasive pneumococcal disease	9	8	5	5	68
	Varicella (limited to hospitalized case)	1		2	1	19
	Congenital rubella syndrome					
	Syphilis	47	48	53	41	547
	Disseminated cryptococcosis	1		1		7
	Tetanus					3
	Vancomycin-resistant <i>S. aureus</i> infection					
	Vancomycin-resistant <i>Enterococcus</i> infection				1	3
	Pertussis	15	11	10	13	218
	Rubella					1
Measles	1	3	10	12	32	
MDRA infection						

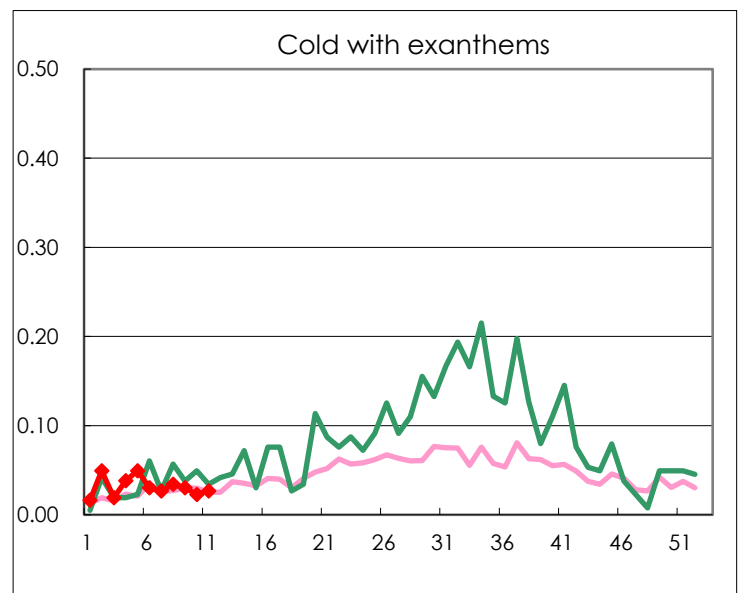
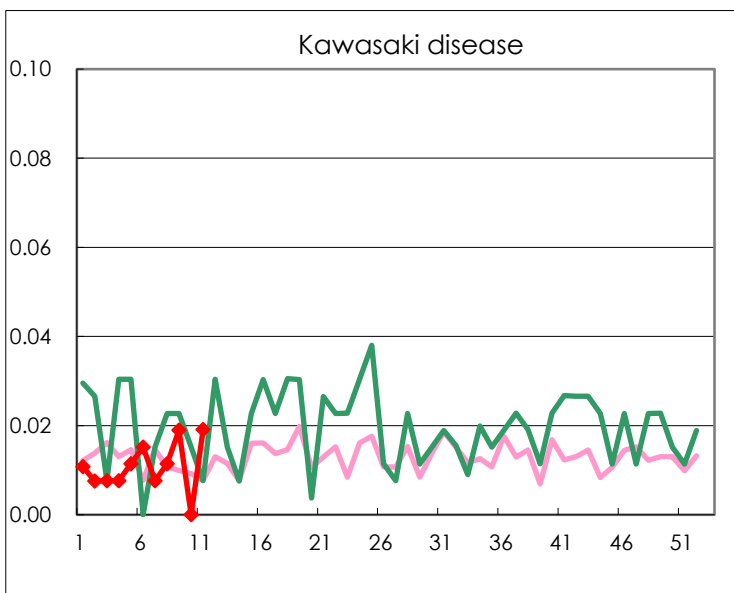
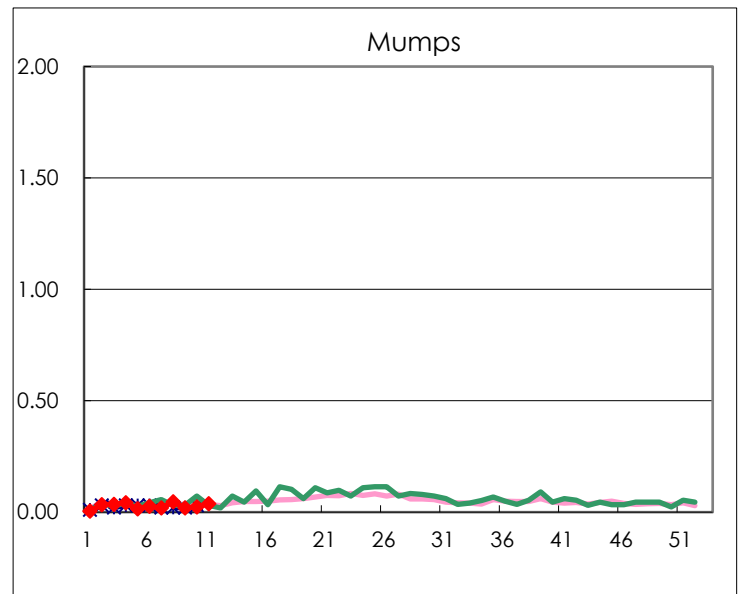
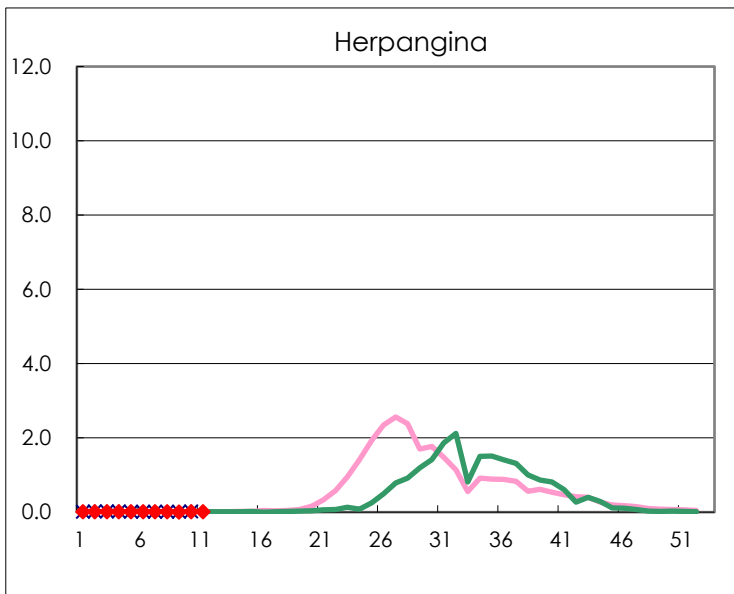
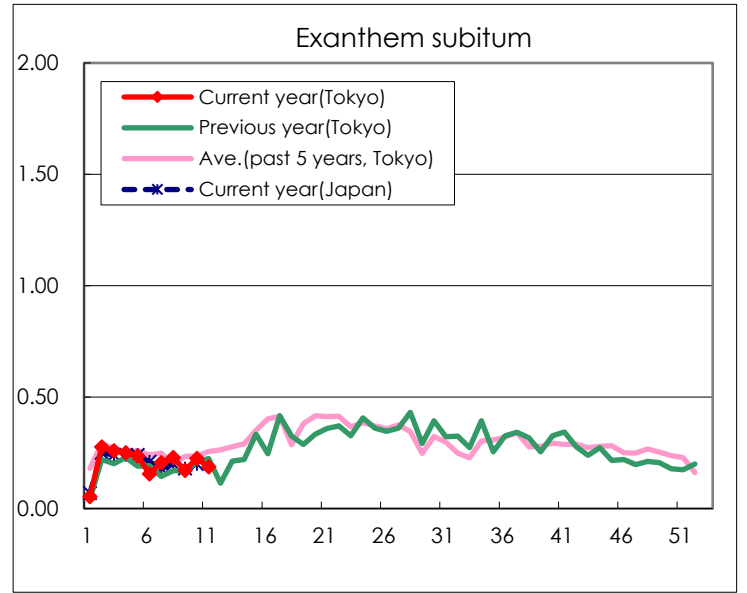
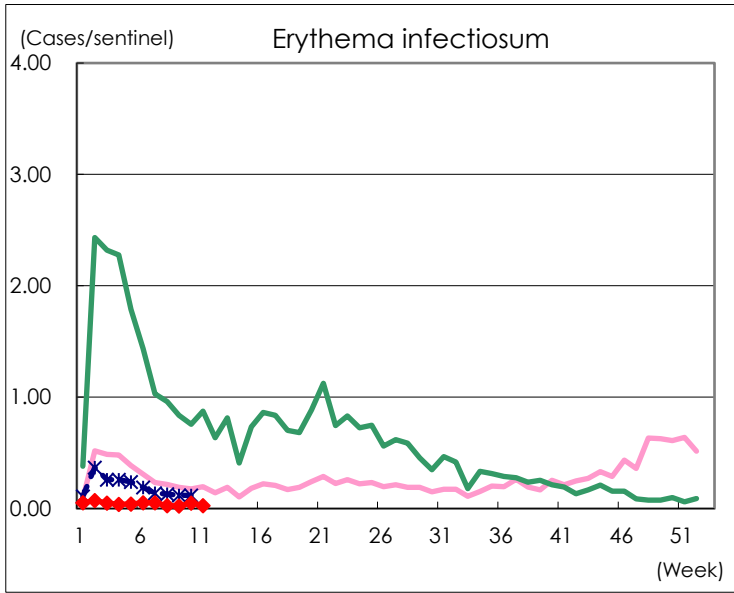
Number of patients with the diseases to be reported
by the designated clinics and hospitals

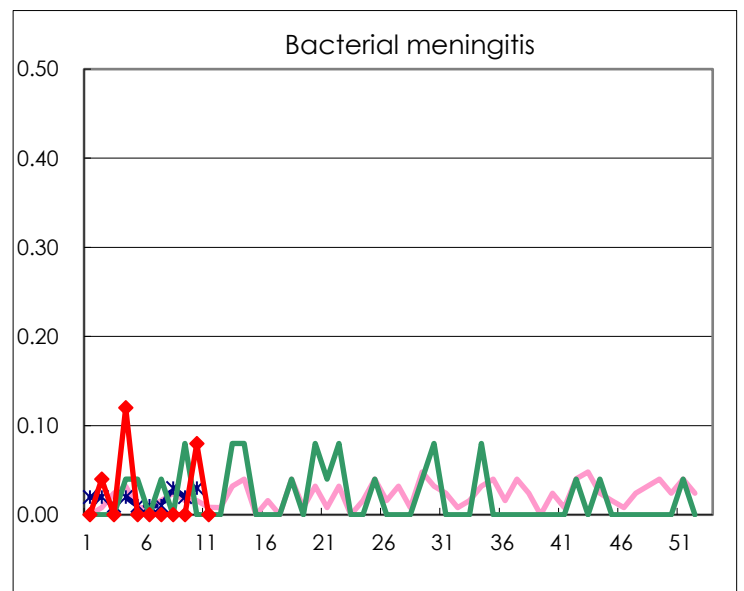
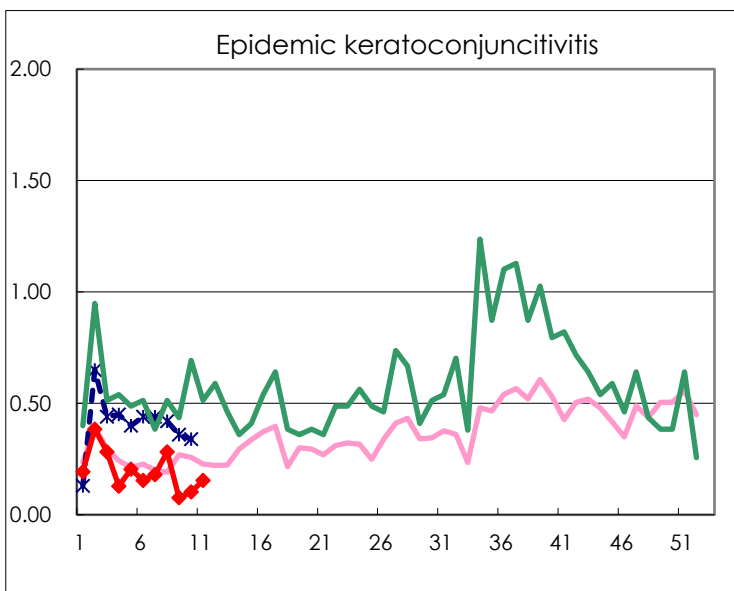
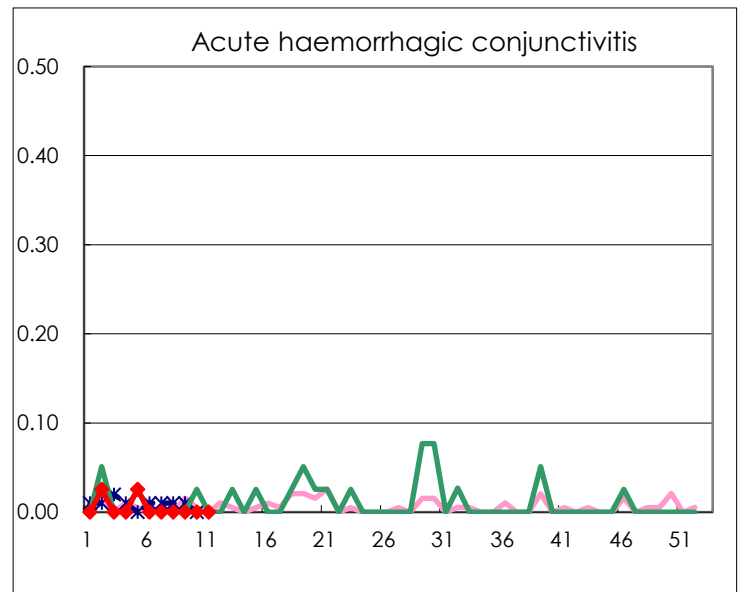
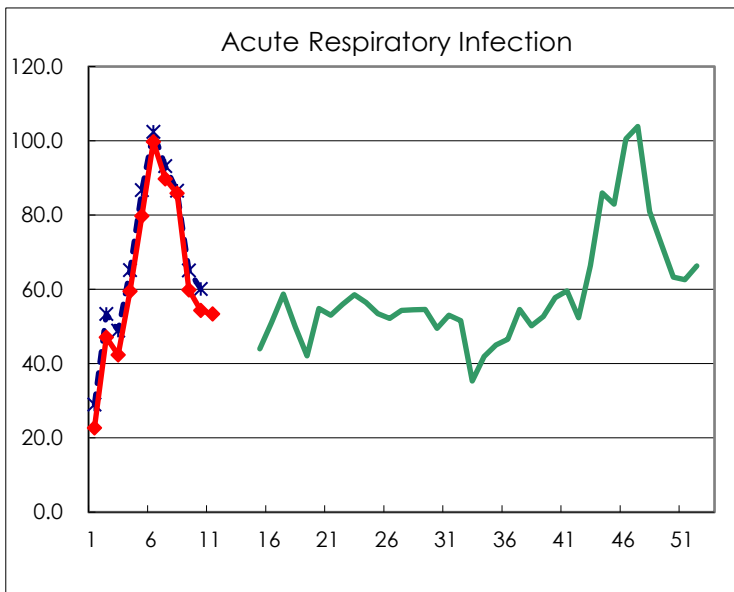
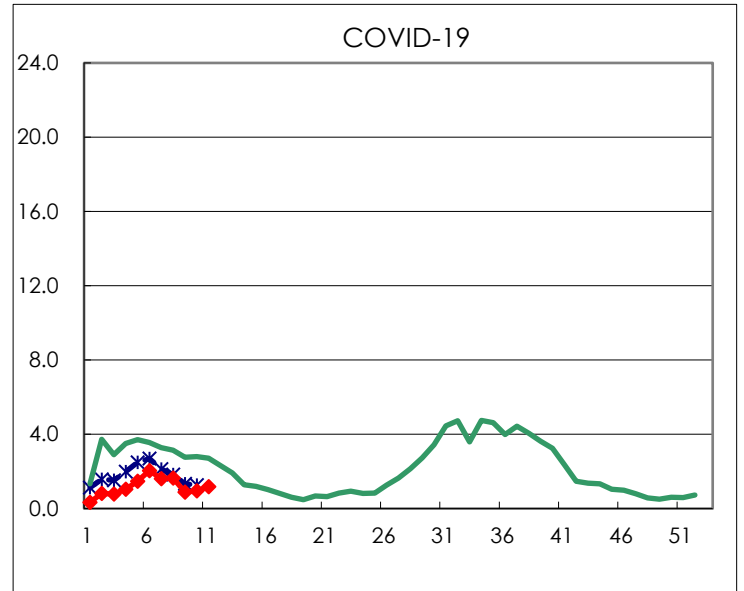
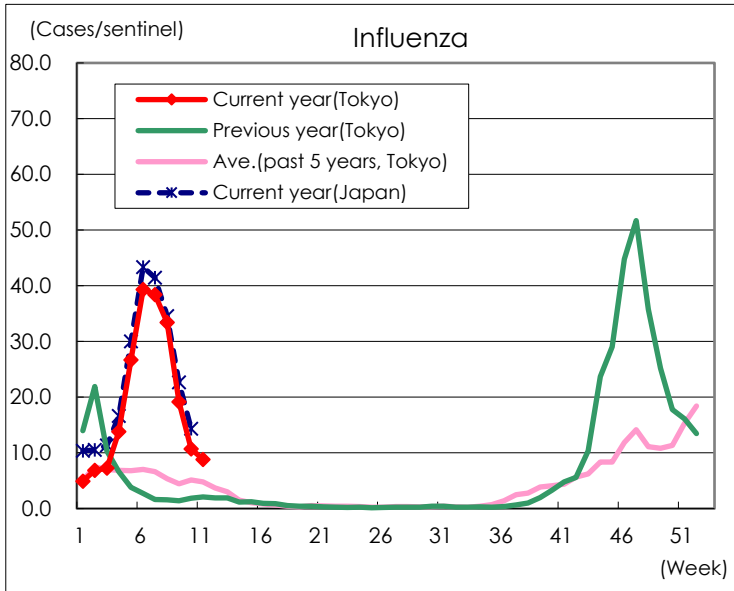
Diseases	Tokyo				
	8th	9th	10th	11th	/sentinel
Respiratory syncytial virus infection	90	51	84	68	0.26
Pharyngoconjunctival fever	39	45	28	25	0.10
Group A streptococcal pharyngitis	427	311	415	391	1.50
Infectious gastroenteritis	2,880	2,019	1,923	1,815	6.95
Chickenpox	69	75	81	99	0.38
Hand, foot, and mouth disease	4	11	8	6	0.02
Erythema infectiosum	7	6	13	7	0.03
Exanthem subitum	60	45	59	49	0.19
Herpangina	2		3	3	0.01
Mumps	12	5	6	10	0.04
Kawasaki disease	3	5		5	0.02
Cold with exanthems	9	8	6	7	0.03
Influenza	13,932	8,016	4,466	3,660	8.80
COVID-19	686	373	397	493	1.19
Acute Respiratory Infection	35,825	25,025	22,719	22,208	53.38
Acute hemorrhagic conjunctivitis					
Epidemic keratoconjunctivitis	11	3	4	6	0.15
Bacterial meningitis			2		
Aseptic meningitis	1			1	0.04
Mycoplasma pneumonia	3	4	2	2	0.08
Chlamydial pneumonia (excluding psittacosis)	2	2			
Infectious gastroenteritis (only by Rotavirus)	7	5	4	2	0.08
Influenza-Associated Hospitalizations	56	43	19	18	0.72
COVID-19-Associated Hospitalizations	29	31	23	25	1.00

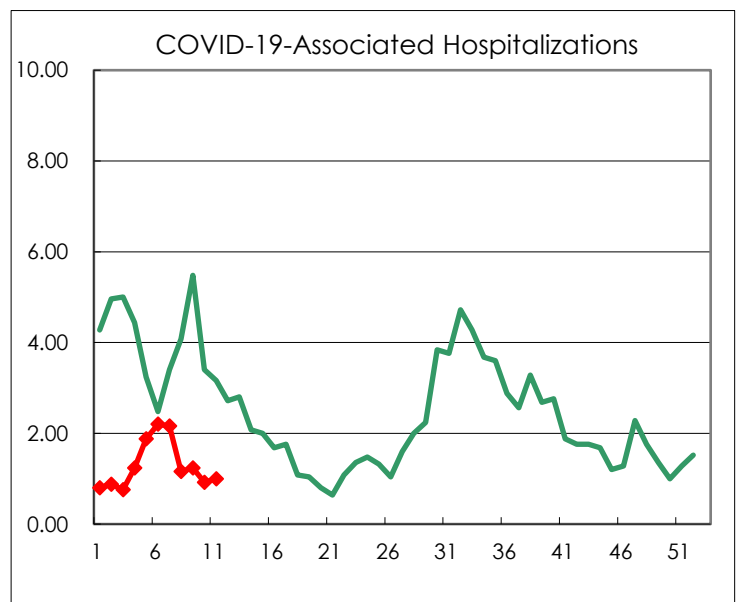
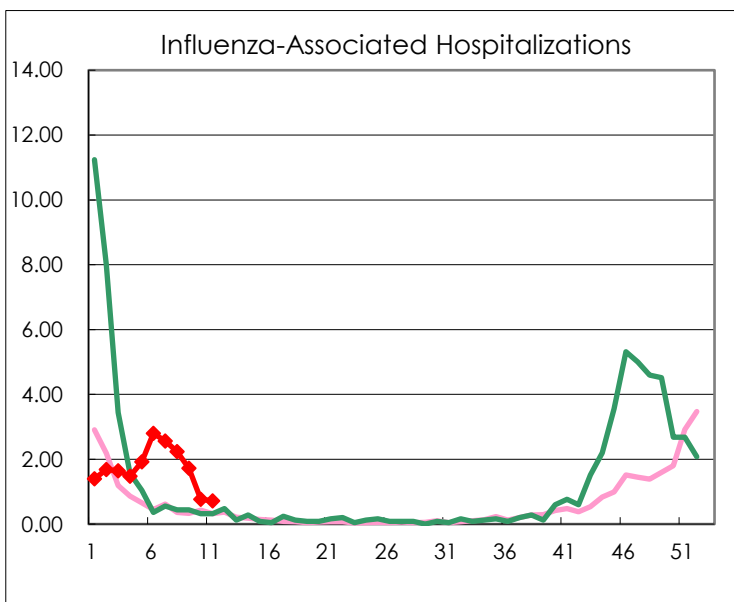
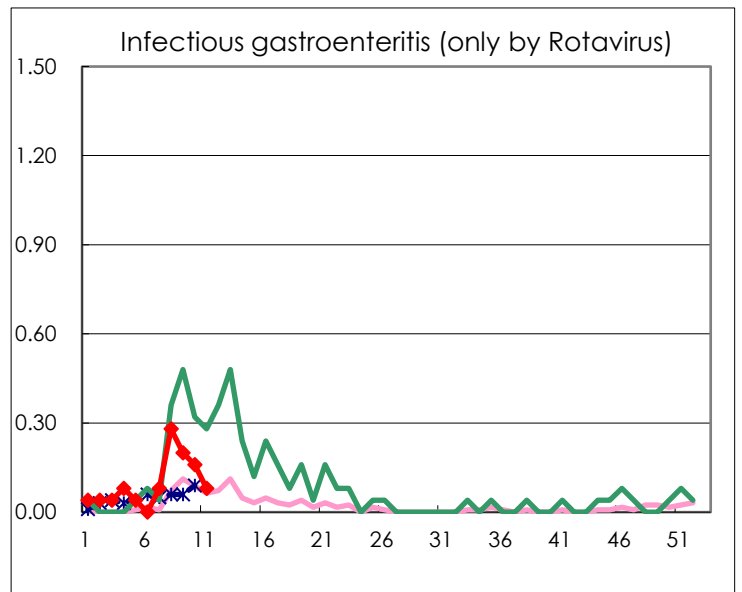
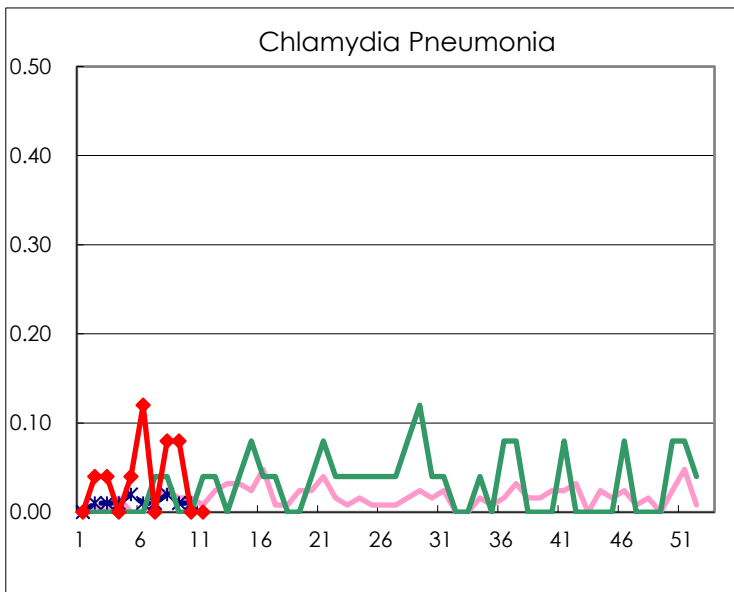
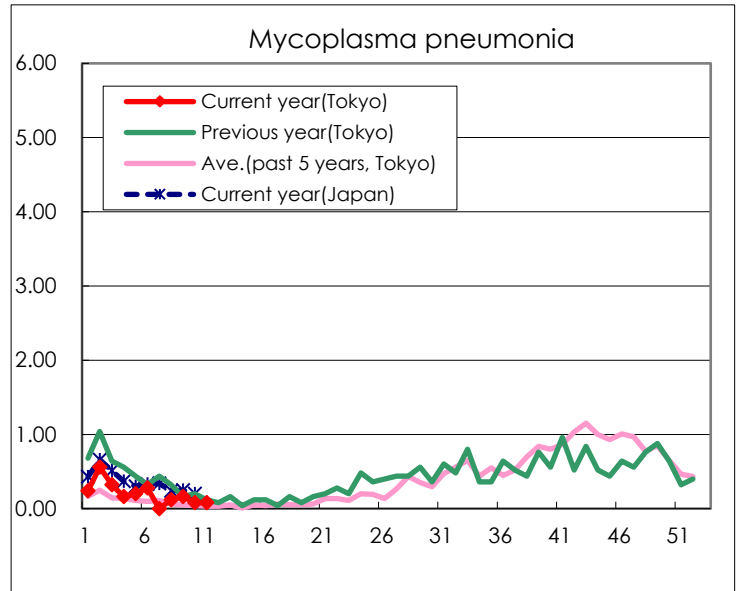
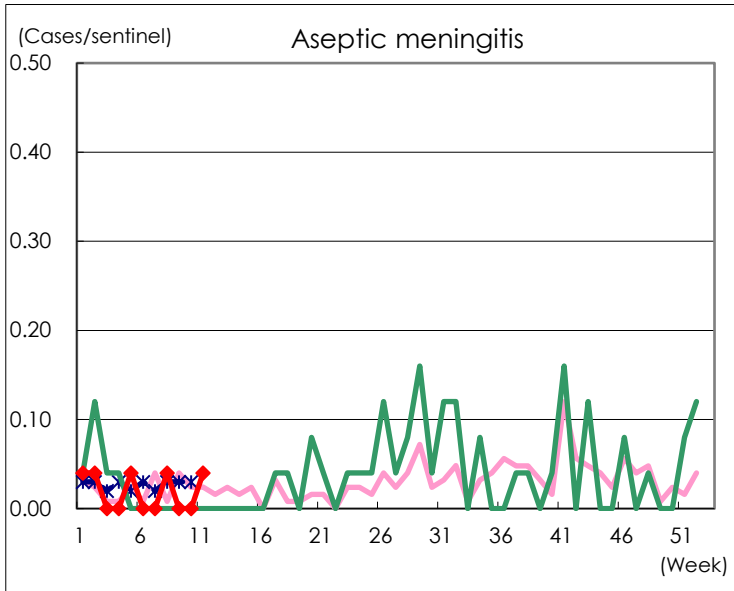
(Blank means 0.)

Disease Trend Graph (weekly reported cases per sentinel in comparison)









Number of sentinel facilities for weekly reporting		
Types of sentinels	Number of sentinels	Sentinels having reported
Pediatric	264	261
Acute Respiratory Infection	419	416
Ophthalmic	39	39
Specially- designated	25	25