
INFECTIOUS DISEASES WEEKLY REPORT

TOKYO iDWR

Tokyo Metropolitan Infectious Disease Surveillance Center

9 April 2026 / Number 14
(3/30 ~ 4/5)

Surveillance System in Tokyo, Japan

The infectious diseases which all physicians must report
All physicians must report to health centers the incidence of the diseases which are shown at page one. Health centers electronically report the individual cases to Tokyo Metropolitan Infectious Disease Surveillance Center.

The infectious diseases required to be reported by the sentinels
The numbers of patients who visit the sentinel clinics or hospitals during a week are reported to health centers in Tokyo. And they electronically report the numbers to Tokyo Metropolitan Infectious Disease Surveillance Center. We have about 500 sentinel clinics and hospitals in Tokyo.

Tokyo Metropolitan Institute of Public Health
TEL:81-3-3363-3213 FAX:81-3-5332-7365
e-mail:tmiph@section.metro.tokyo.jp
URL:idsc.tmiph.metro.tokyo.lg.jp/

Number of patients with the diseases which all physicians must report

Category	Diseases	Tokyo				
		11th	12th	13th	14th	Cum 2026
I	Ebola hemorrhagic fever					
	Crimean-Congo hemorrhagic fever					
	Smallpox					
	South American hemorrhagic fever					
	Plague					
	Marburg disease					
	Lassa fever					
II	Acute poliomyelitis					
	Tuberculosis	37	33	43	42	504
	Diphtheria					
	Severe Acute Respiratory Syndrome(SARS)					
	Middle East Respiratory Syndrome (MERS)					
	Avian influenza H5N1					
III	Avian influenza H7N9					
	Cholera					
	Shigellosis		1			8
	Enterohemorrhagic Escherichia coli infection	4	2	3	4	49
	Typhoid fever					2
IV	Paratyphoid fever					1
	Hepatitis E	3	1	3		38
	West Nile fever					
	Hepatitis A		2	4	1	12
	Echinococcosis					
	Mpox	3	2	1	3	30
	Yellow fever					
	Psittacosis					
	Omsk hemorrhagic fever					
	Relapsing fever					
	Kyasanur forest disease					
	Q fever					
	Rabies					
	Coccidioidomycosis					
	Zika virus infection					
	Severe Fever with Thrombocytopenia Syndrome					
	Hemorrhagic fever with renal syndrome					
	Western equine encephalitis					
	Tick-borne encephalitis					
	Anthrax					
	Chikungunya fever					
	Scrub typhus(Tsutsugamushi disease)					
	Dengue fever	1			1	8
	Eastern equine encephalitis					
	Avian influenza (excluding H5N1 and H7N9)					
	Nipah virus infection					
	Japanese spotted fever					
	Japanese encephalitis					
	Hantavirus pulmonary syndrome					
	Herpes B virus infection					
	Glanders					
	Brucellosis					
	Venezuelan equine encephalitis					
	Hendra virus infection					
Epidemic typhus						
Botulism						
Malaria			1		2	
Tularemia						
Lyme disease						
Lyssavirus infection(excluding rabies)						
Rift valley fever						
Melioidosis						
Legionellosis		2	1	2	38	
Leptospirosis					1	
Rocky mountain spotted fever						

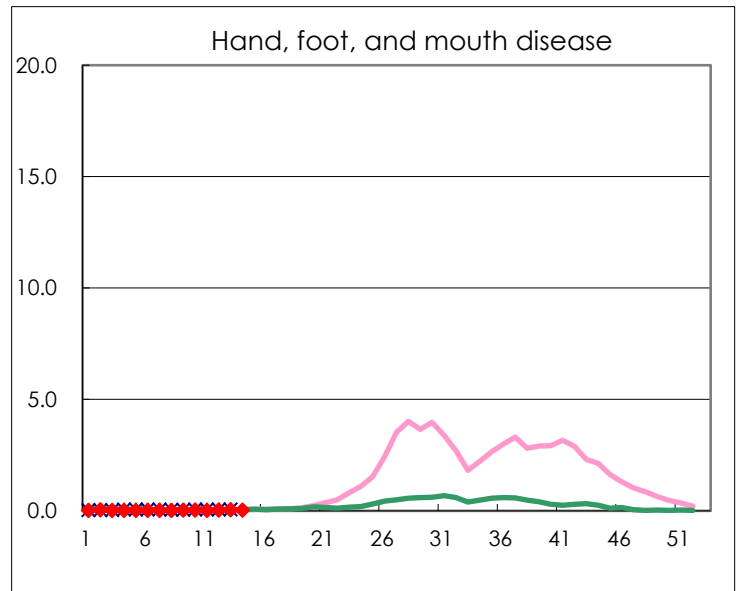
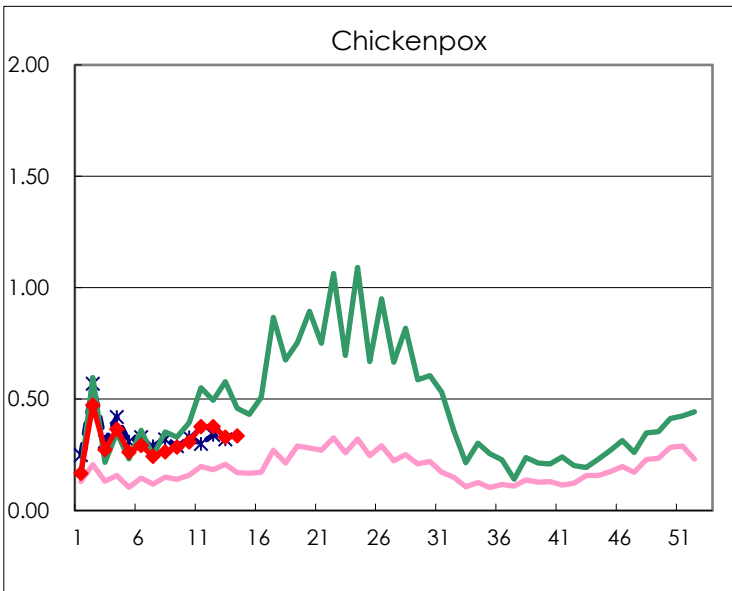
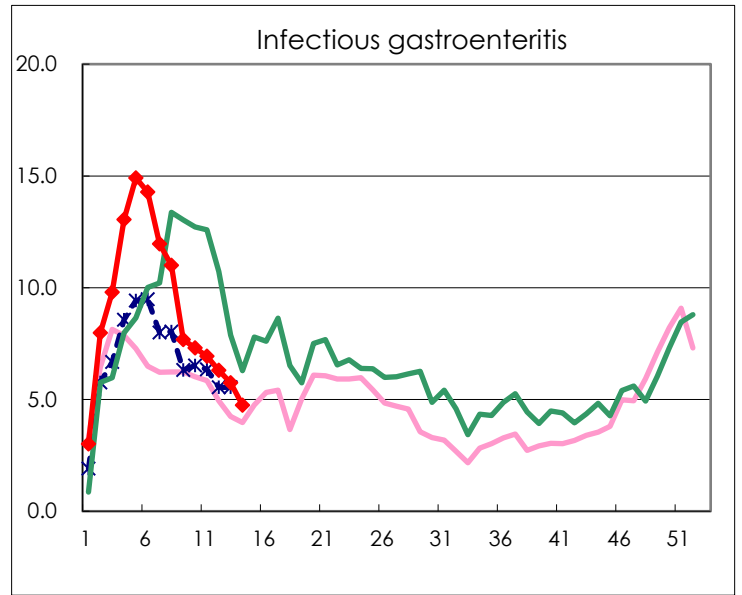
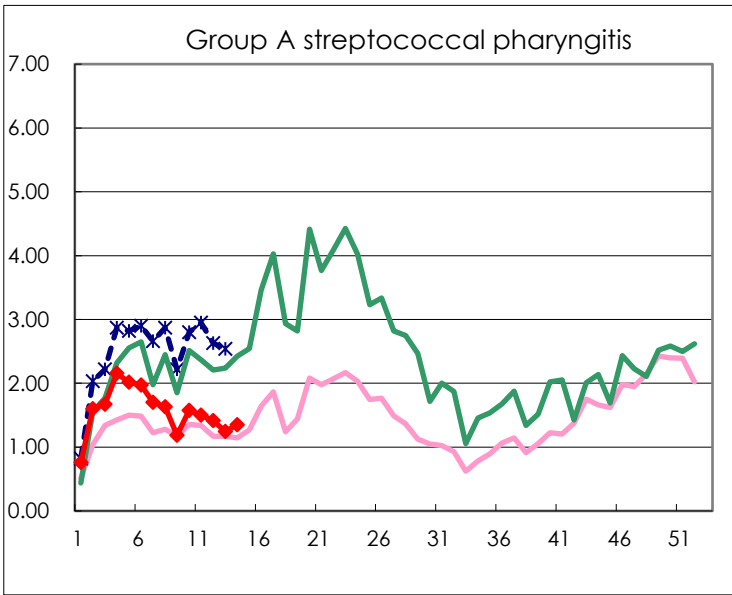
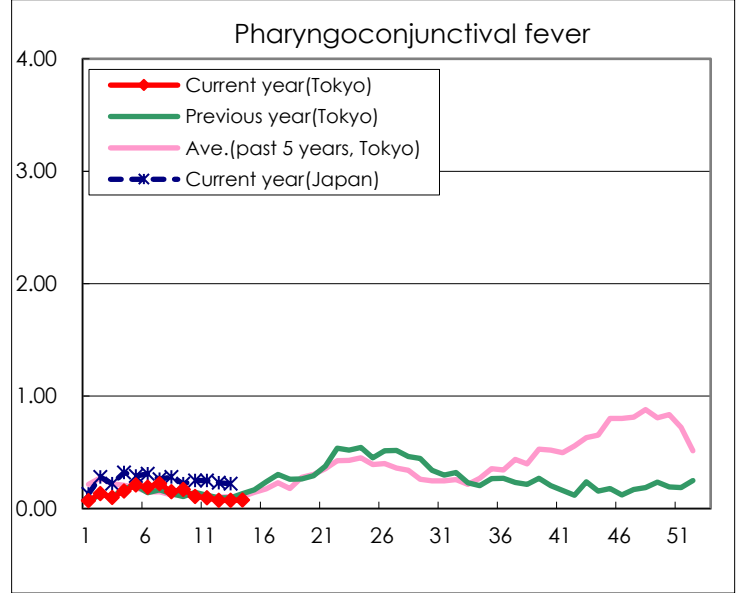
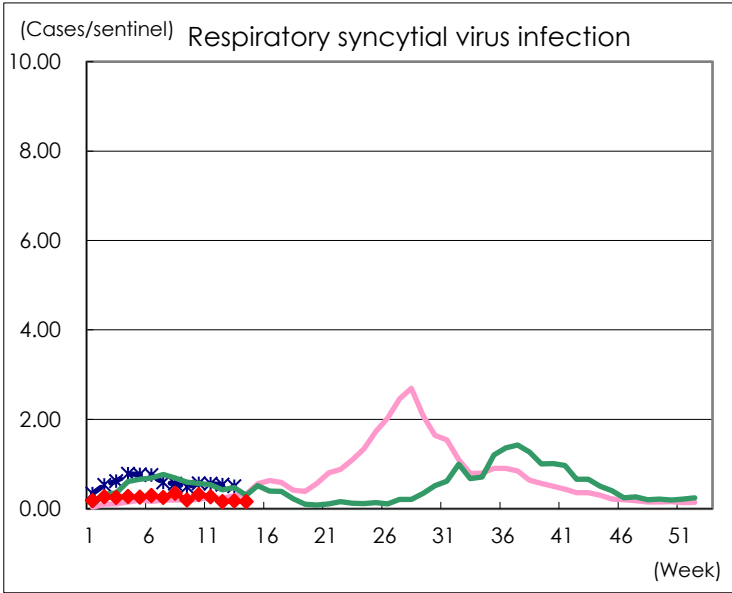
Category	Diseases	Tokyo				
		11th	12th	13th	14th	Cum 2026
V	Amebiasis	3	2	1	3	30
	Viral hepatitis(excluding hepatitis A and E)				2	12
	CRE infection	2	4		2	27
	Acute Flaccid Paralysis (excluding Acute poliomyelitis)					5
	Acute encephalitis(excluding JE and WNE)			2		7
	Cryptosporidiosis					1
	Creutzfeldt-Jakob disease					4
	Severe invasive streptococcal infections(TSLS)	1	2	2	3	41
	Acquired immunodeficiency syndrome (AIDS)	6	4	5	4	77
	Giardiasis					3
	Invasive <i>Haemophilus influenzae</i> disease	4	2	1		21
	Invasive meningococcal disease					1
	Invasive pneumococcal disease	6	7	9	7	92
	Varicella (limited to hospitalized case)	1	4	2	3	28
	Congenital rubella syndrome					
	Syphilis	42	46	47	51	692
	Disseminated cryptococcosis			1		8
	Tetanus					3
	Vancomycin-resistant <i>S. aureus</i> infection					
	Vancomycin-resistant <i>Enterococcus</i> infection	1		1		4
	Pertussis	13	10	5	11	244
	Rubella					1
	Measles	12	8	8	23	71
MDRA infection						

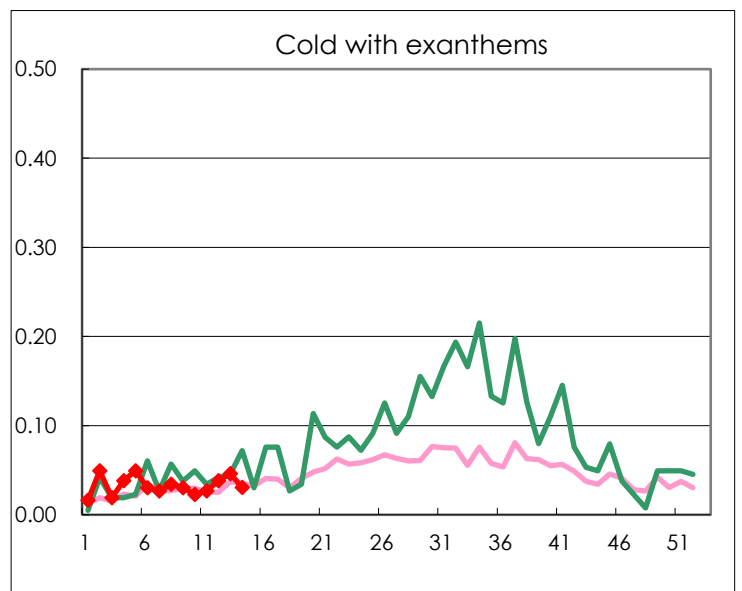
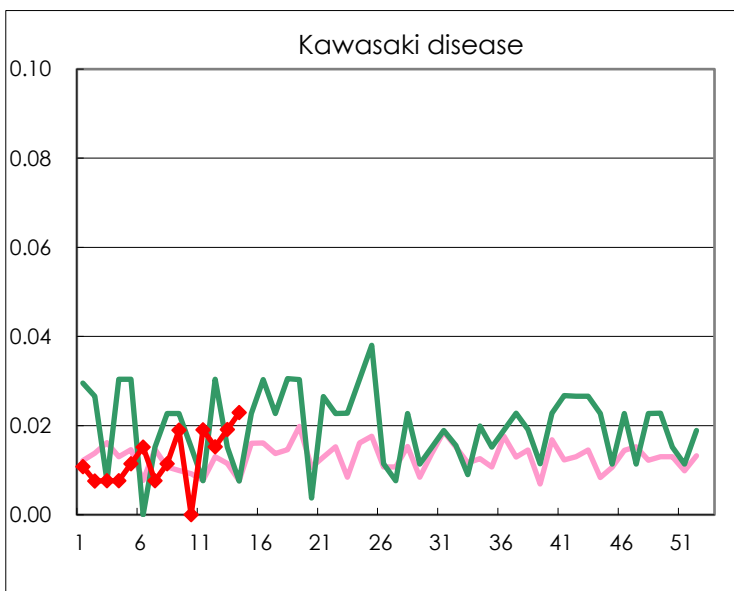
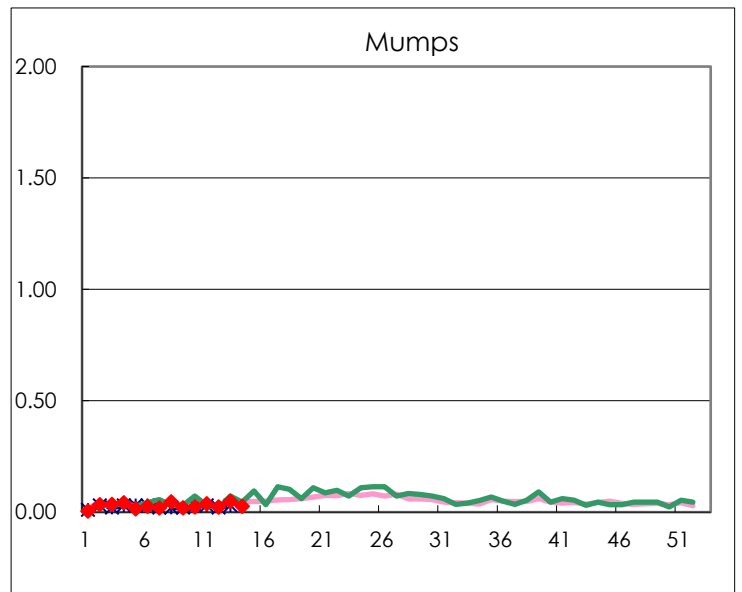
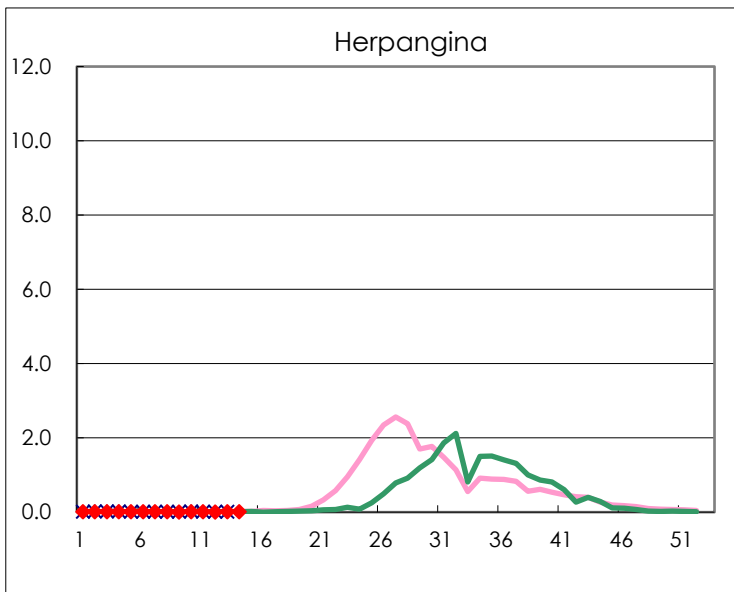
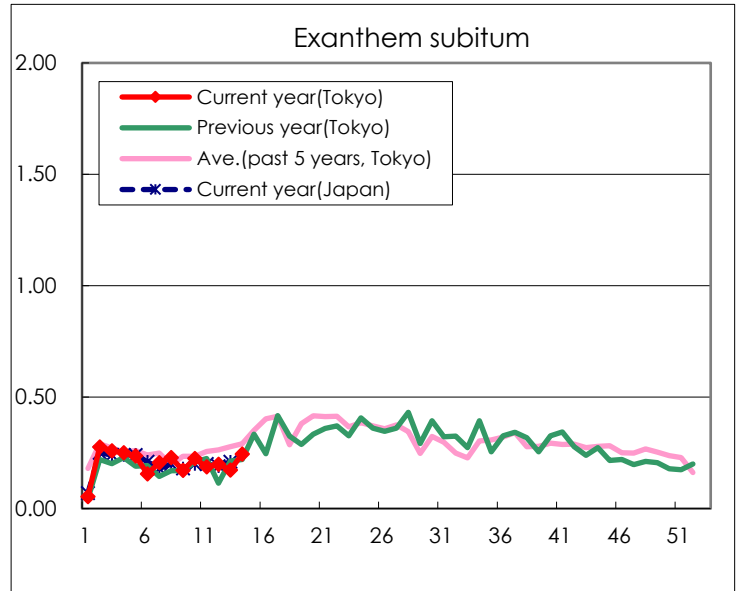
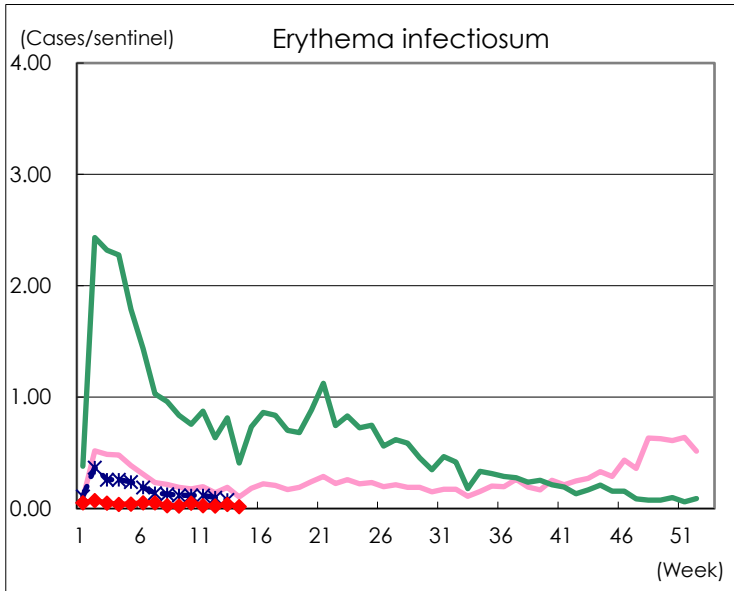
Number of patients with the diseases to be reported
by the designated clinics and hospitals

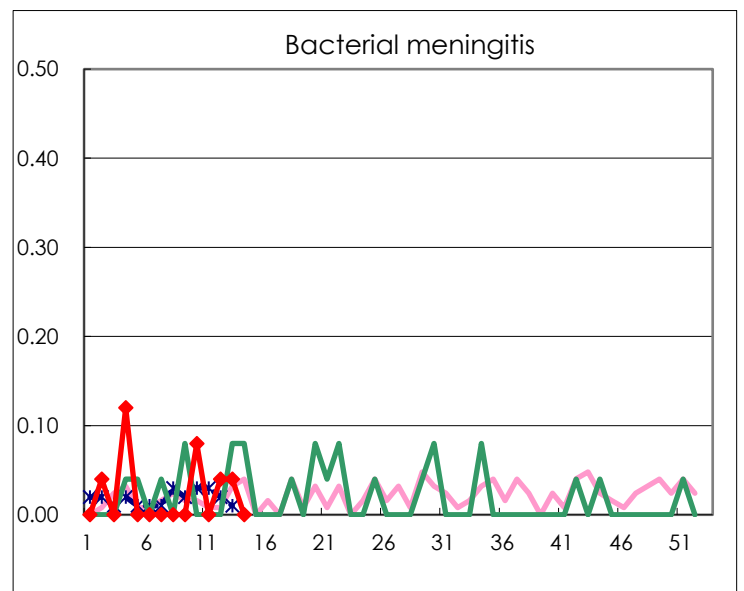
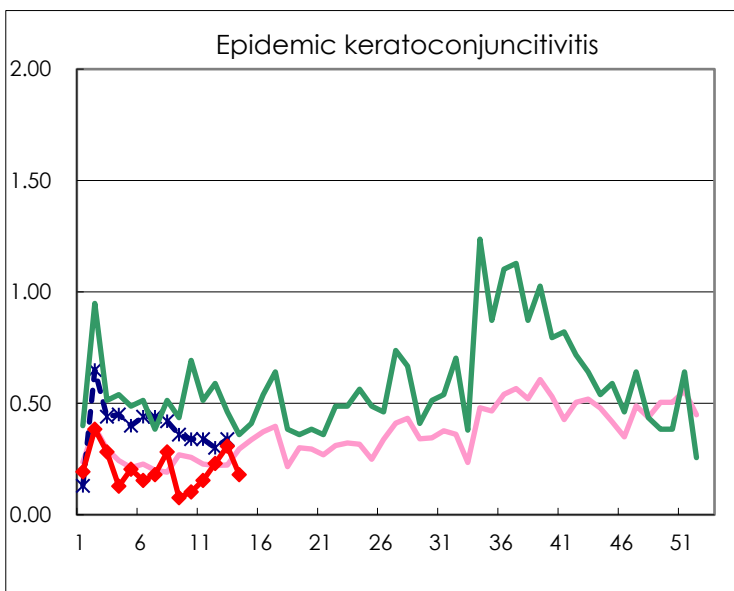
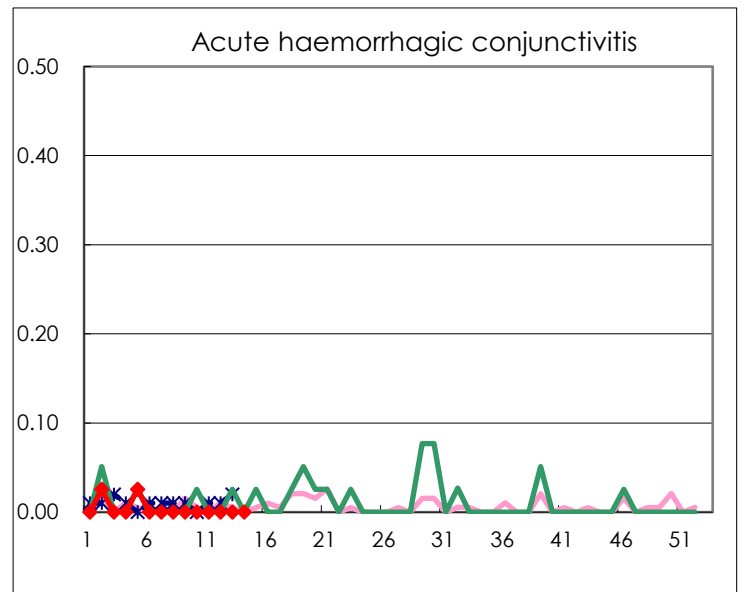
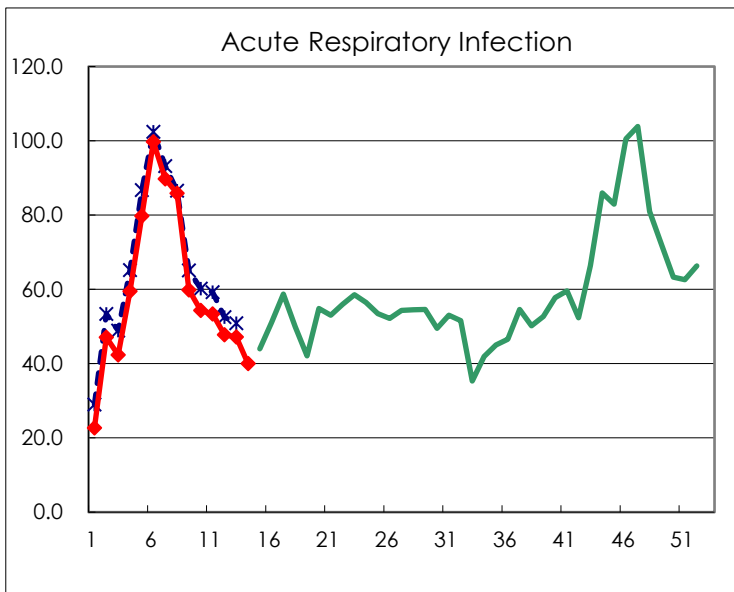
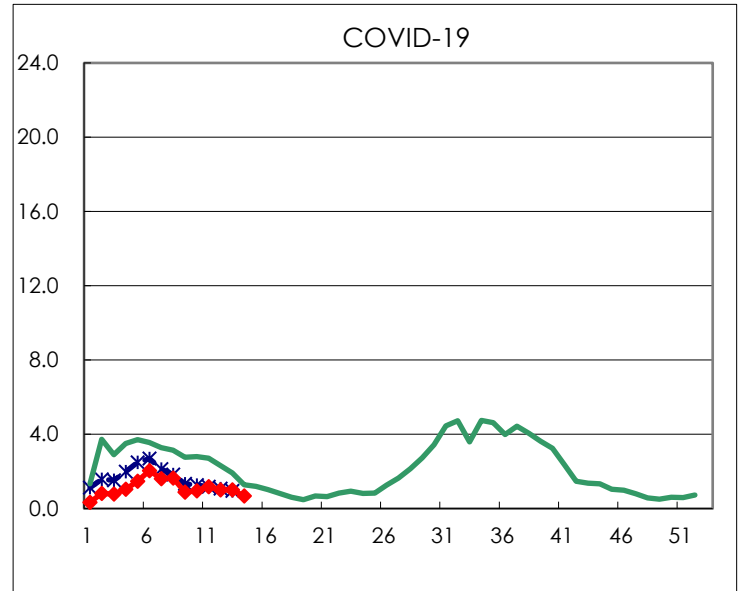
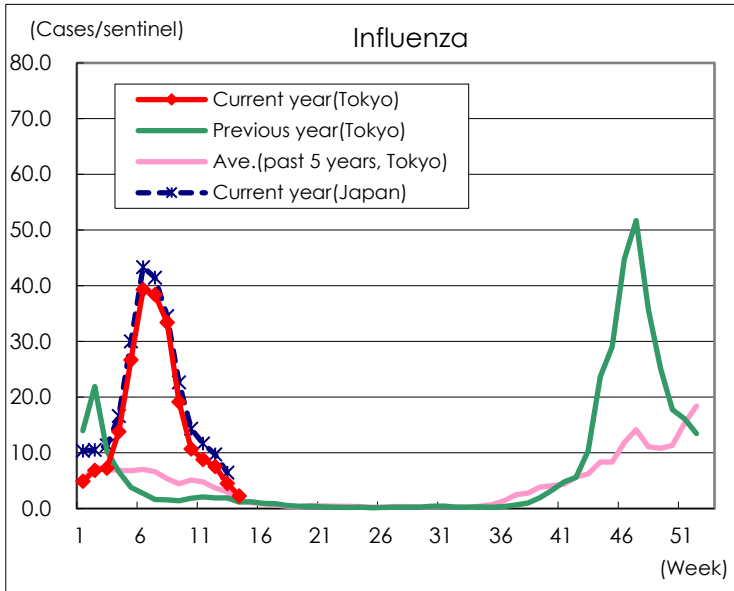
Diseases	Tokyo				
	11th	12th	13th	14th	/sentinel
Respiratory syncytial virus infection	69	42	46	42	0.16
Pharyngoconjunctival fever	25	19	19	20	0.08
Group A streptococcal pharyngitis	393	371	325	354	1.35
Infectious gastroenteritis	1,818	1,652	1,499	1,242	4.74
Chickenpox	99	99	86	88	0.34
Hand, foot, and mouth disease	6	9	13	9	0.03
Erythema infectiosum	7	6	10	5	0.02
Exanthem subitum	49	52	45	64	0.24
Herpangina	3		2	2	0.01
Mumps	10	6	13	7	0.03
Kawasaki disease	5	4	5	6	0.02
Cold with exanthems	7	10	12	8	0.03
Influenza	3,679	3,158	1,863	939	2.25
COVID-19	493	416	421	279	0.67
Acute Respiratory Infection	22,268	19,917	19,606	16,676	39.99
Acute hemorrhagic conjunctivitis					
Epidemic keratoconjunctivitis	6	9	12	7	0.18
Bacterial meningitis		1	1		
Aseptic meningitis	1	1	1	1	0.04
Mycoplasma pneumonia	2	1	3	2	0.08
Chlamydial pneumonia (excluding psittacosis)		1	1	1	0.04
Infectious gastroenteritis (only by Rotavirus)	2	5	5	7	0.28
Influenza-Associated Hospitalizations	18	17	12		
COVID-19-Associated Hospitalizations	25	15	20	14	0.56

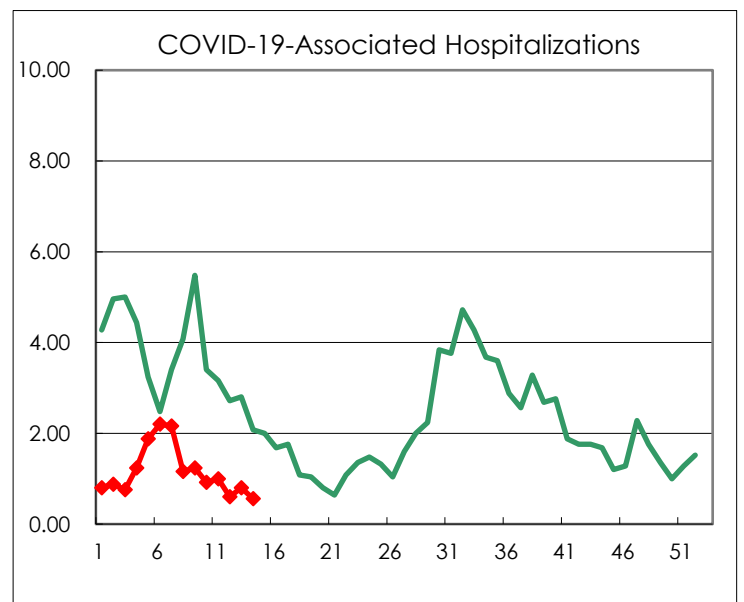
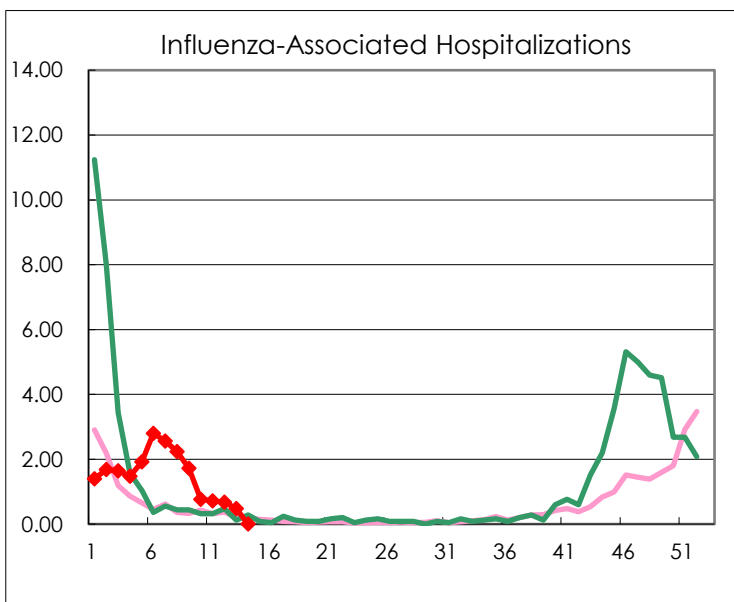
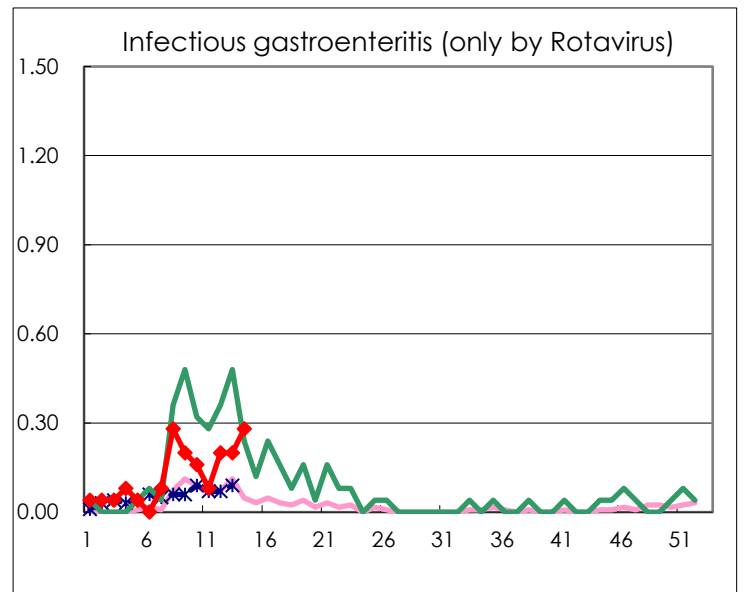
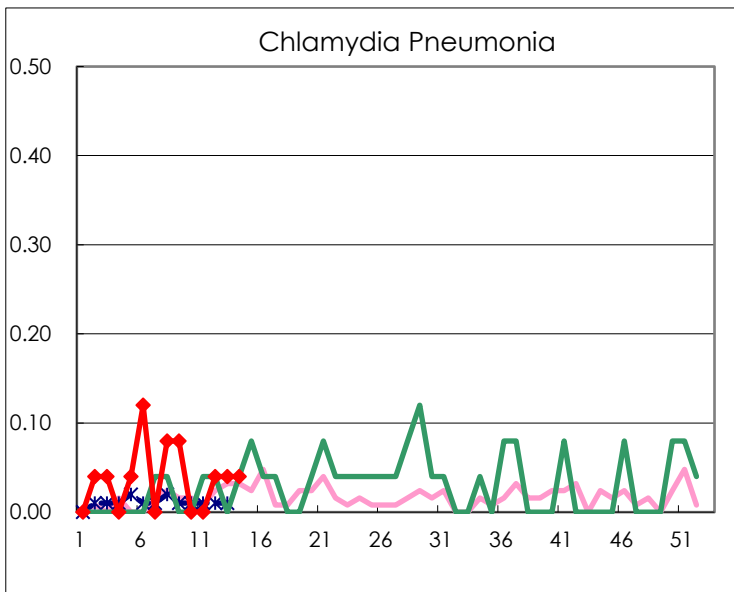
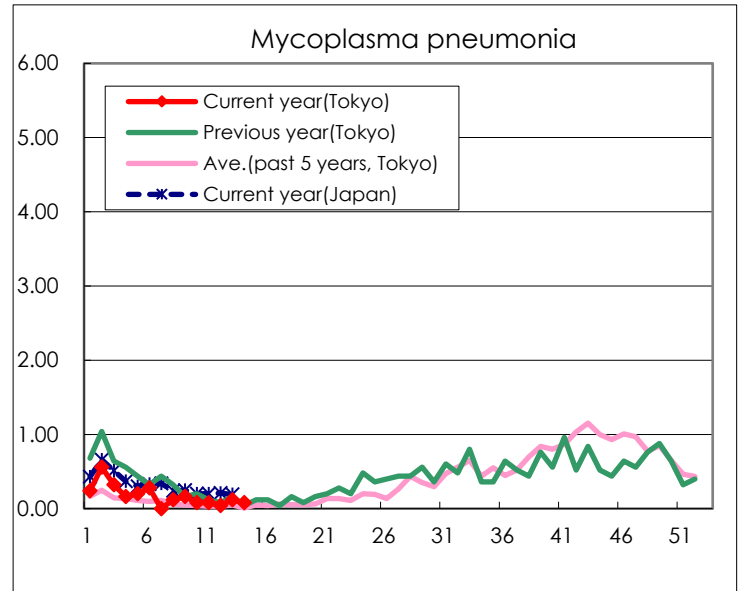
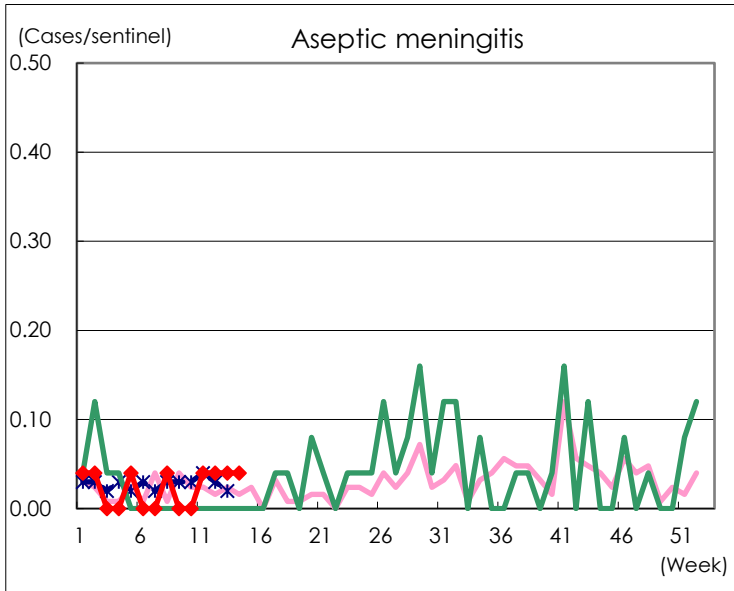
(Blank means 0.)

Disease Trend Graph (weekly reported cases per sentinel in comparison)









Number of sentinel facilities for weekly reporting		
Types of sentinels	Number of sentinels	Sentinels having reported
Pediatric	264	262
Acute Respiratory Infection	419	417
Ophthalmic	39	39
Specially- designated	25	25