
INFECTIOUS DISEASES WEEKLY REPORT

TOKYO iDWR

Tokyo Metropolitan Infectious Disease Surveillance Center

4 June 2026 / Number 22
(5/25 ~ 5/31)

Surveillance System in Tokyo, Japan

The infectious diseases which all physicians must report
All physicians must report to health centers the incidence of the diseases which are shown at page one. Health centers electronically report the individual cases to Tokyo Metropolitan Infectious Disease Surveillance Center.

The infectious diseases required to be reported by the sentinels
The numbers of patients who visit the sentinel clinics or hospitals during a week are reported to health centers in Tokyo. And they electronically report the numbers to Tokyo Metropolitan Infectious Disease Surveillance Center. We have about 500 sentinel clinics and hospitals in Tokyo.

Tokyo Metropolitan Institute of Public Health

TEL:81-3-3363-3213 FAX:81-3-5332-7365

e-mail:tmiph@section.metro.tokyo.jp

URL:idsc.tmiph.metro.tokyo.lg.jp/

Number of patients with the diseases which all physicians must report

Category	Diseases	Tokyo				
		19th	20th	21st	22nd	Cum 2026
I	Ebola hemorrhagic fever					
	Crimean-Congo hemorrhagic fever					
	Smallpox					
	South American hemorrhagic fever					
	Plague					
	Marburg disease					
	Lassa fever					
II	Acute poliomyelitis					
	Tuberculosis	19	41	47	37	865
	Diphtheria					
	Severe Acute Respiratory Syndrome(SARS)					
	Middle East Respiratory Syndrome (MERS)					
	Avian influenza H5N1					
Avian influenza H7N9						
III	Cholera					
	Shigellosis		3	1		12
	Enterohemorrhagic Escherichia coli infection		2	6	7	79
	Typhoid fever	1		1	1	6
	Paratyphoid fever					1
IV	Hepatitis E	1	6	6	3	72
	West Nile fever					
	Hepatitis A	1	5	5	3	35
	Echinococcosis					
	Mpox	4	3	3	2	55
	Yellow fever					
	Psittacosis					
	Omsk hemorrhagic fever					
	Relapsing fever					
	Kyasanur forest disease					
	Q fever					
	Rabies					
	Coccidioidomycosis			1		2
	Zika virus infection					
	Severe Fever with Thrombocytopenia Syndrome					1
	Hemorrhagic fever with renal syndrome					
	Western equine encephalitis					
	Tick-borne encephalitis					
	Anthrax					
	Chikungunya fever					
	Scrub typhus(Tsutsugamushi disease)					
	Dengue fever		1			9
	Eastern equine encephalitis					
	Avian influenza (excluding H5N1 and H7N9)					
	Nipah virus infection					
	Japanese spotted fever					
	Japanese encephalitis					
	Hantavirus pulmonary syndrome					
	Herpes B virus infection					
	Glanders					
	Brucellosis					
	Venezuelan equine encephalitis					
	Hendra virus infection					
Epidemic typhus						
Botulism						
Malaria					3	
Tularemia						
Lyme disease						
Lyssavirus infection(excluding rabies)						
Rift valley fever						
Melioidosis						
Legionellosis	1	3	4	2	53	
Leptospirosis	1				2	
Rocky mountain spotted fever						

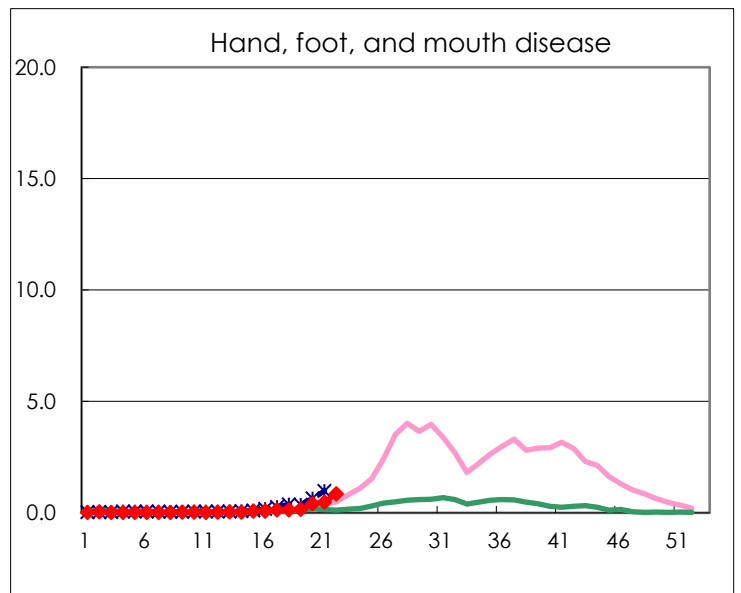
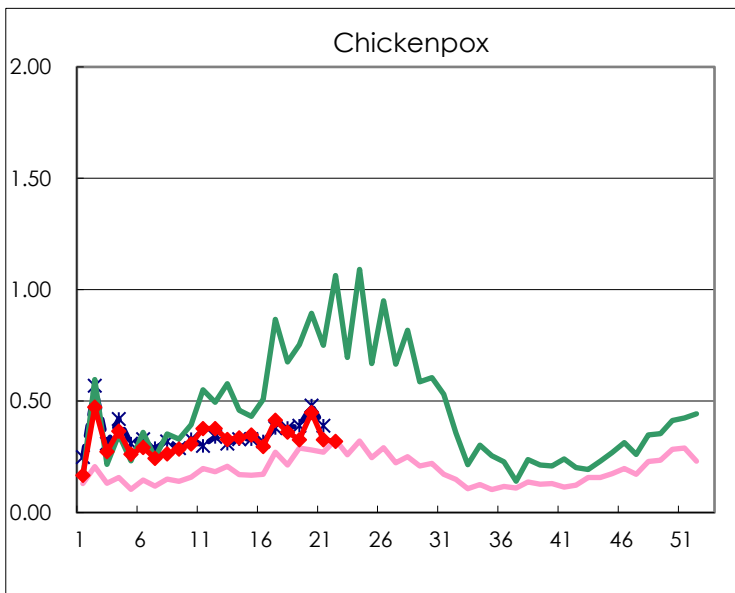
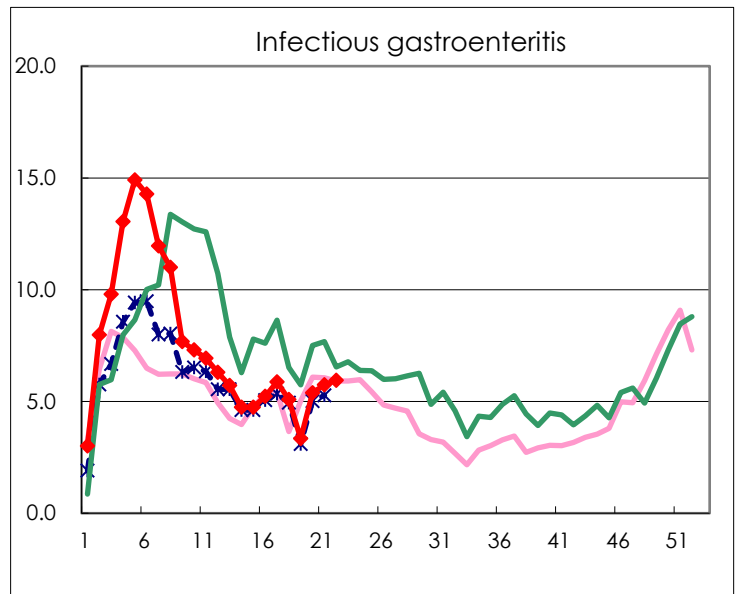
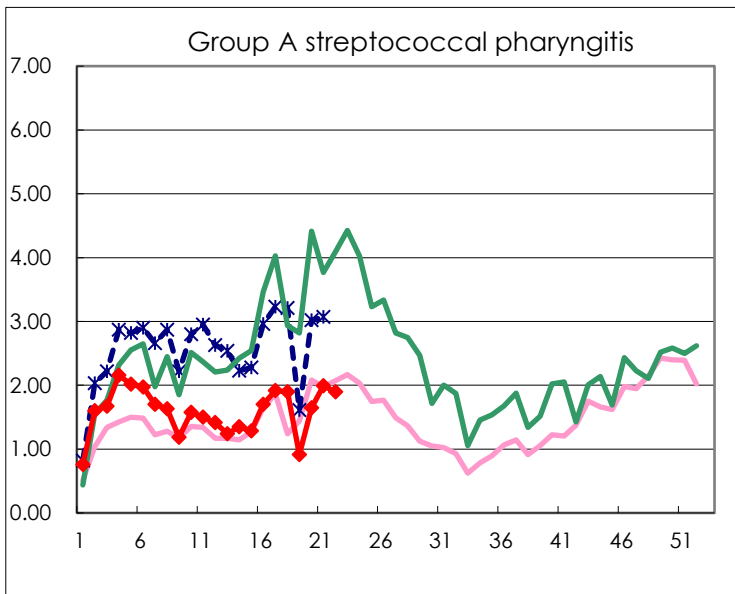
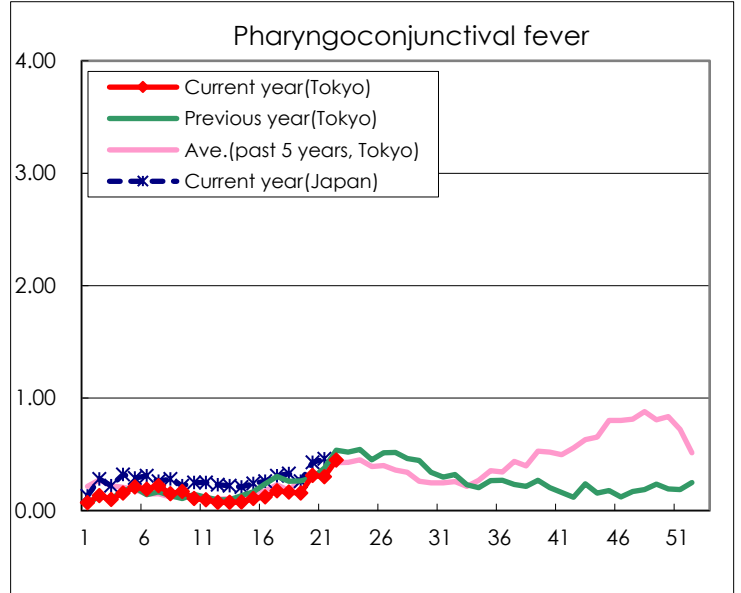
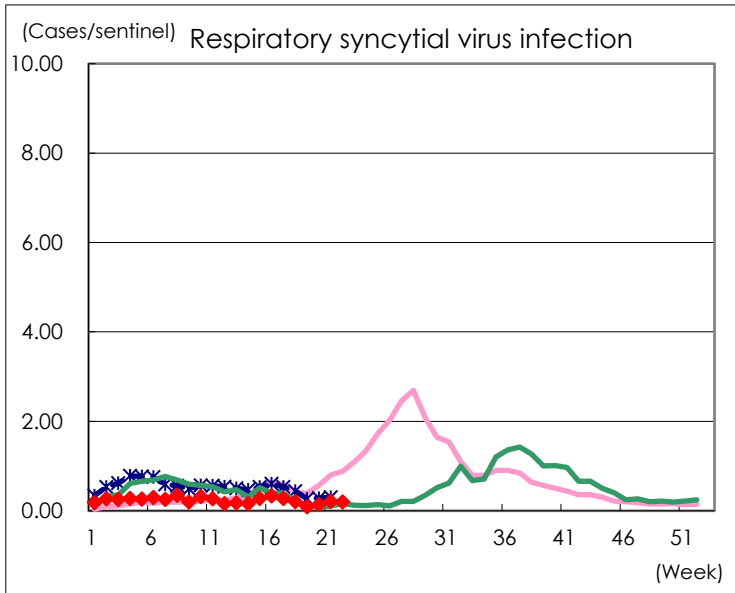
Category	Diseases	Tokyo				
		19th	20th	21st	22nd	Cum 2026
V	Amebiasis	2		2	2	43
	Viral hepatitis(excluding hepatitis A and E)			2	2	18
	CRE infection		5	5	2	51
	Acute Flaccid Paralysis (excluding Acute poliomyelitis)					5
	Acute encephalitis(excluding JE and WNE)		1		1	13
	Cryptosporidiosis					1
	Creutzfeldt-Jakob disease	1	1		1	8
	Severe invasive streptococcal infections(TSLS)	1	3	4		56
	Acquired immunodeficiency syndrome (AIDS)	3	2	8	5	115
	Giardiasis				1	7
	Invasive <i>Haemophilus influenzae</i> disease	1	4	3	2	36
	Invasive meningococcal disease			1		3
	Invasive pneumococcal disease	9	10	8	7	154
	Varicella (limited to hospitalized case)	1	1	4	4	47
	Congenital rubella syndrome					
	MDRP infection		1	1		10
	Syphilis	30	73	54	65	1,129
	Disseminated cryptococcosis			1		10
	Tetanus		1			4
	Vancomycin-resistant <i>S. aureus</i> infection					
	Vancomycin-resistant <i>Enterococcus</i> infection		1			5
	Pertussis	16	25	15	18	374
	Rubella					1
Measles	9	10	8	7	260	
MDRA infection						

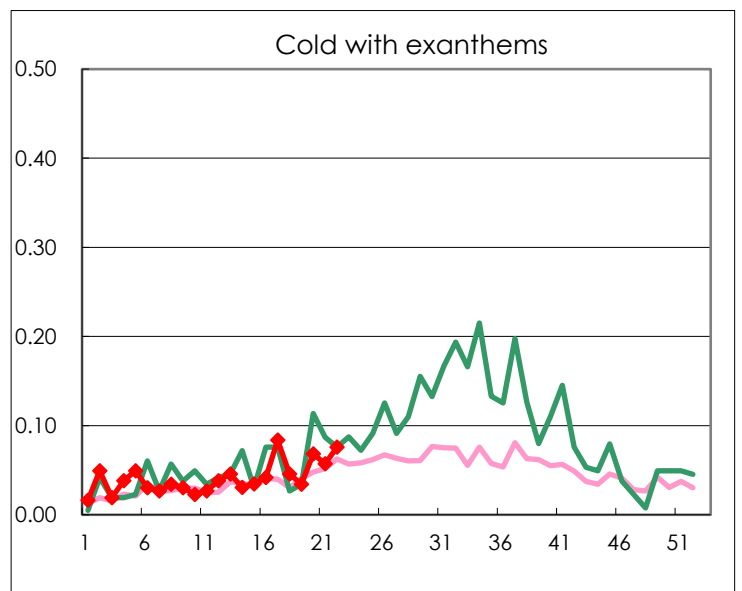
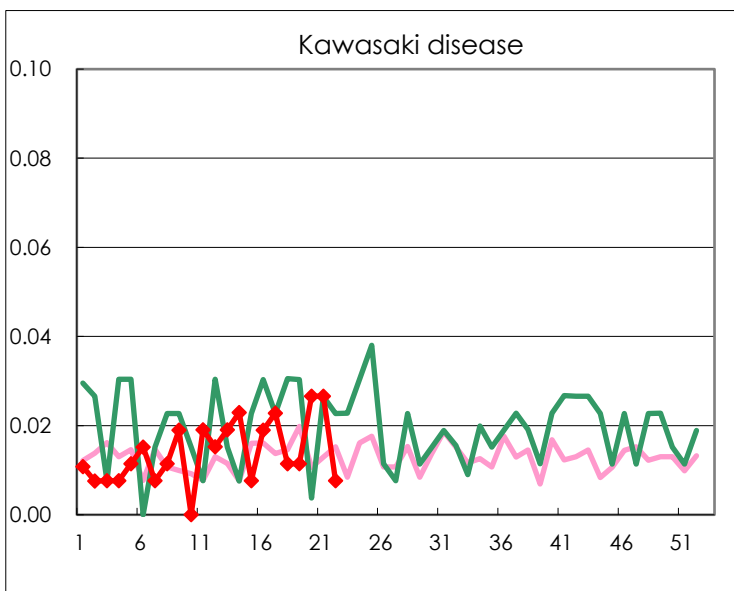
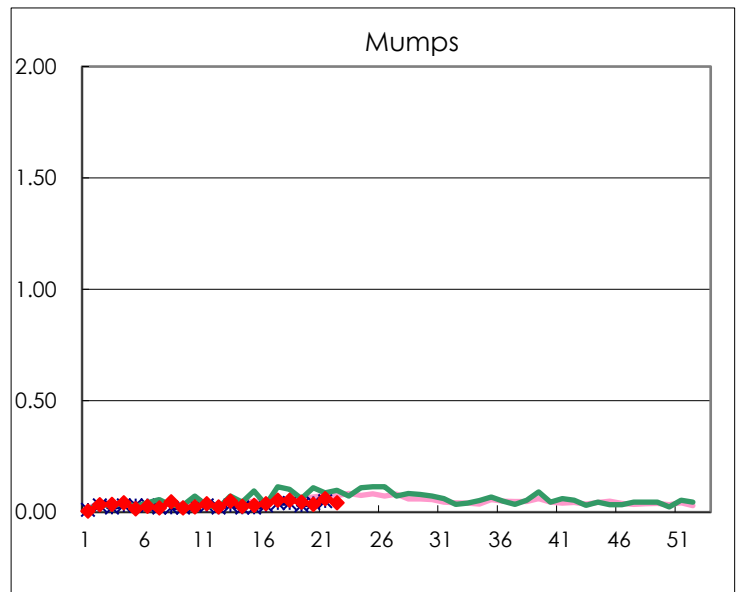
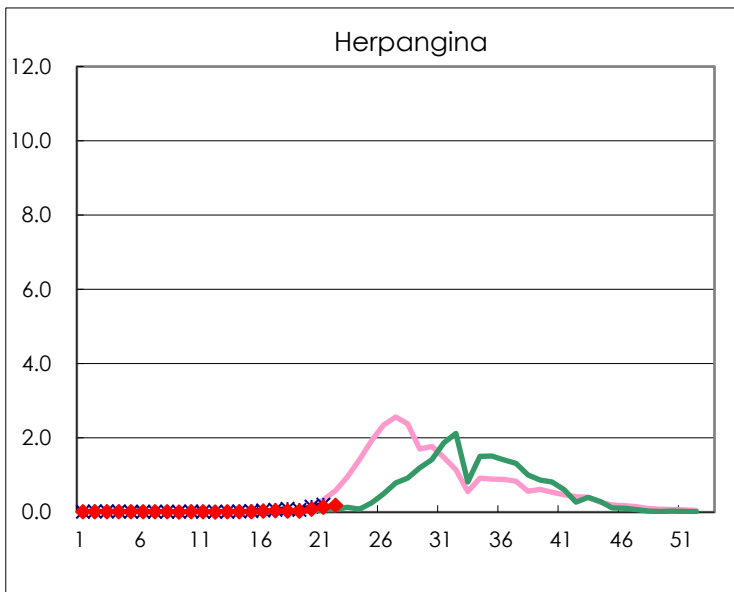
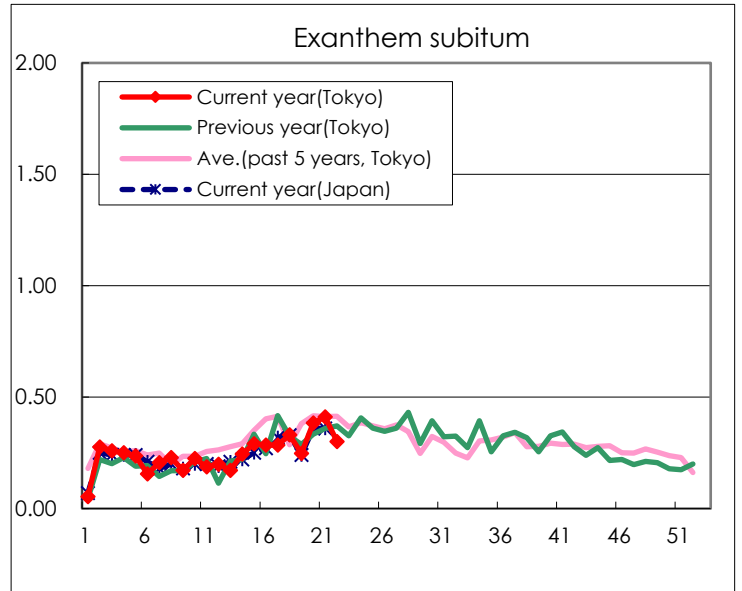
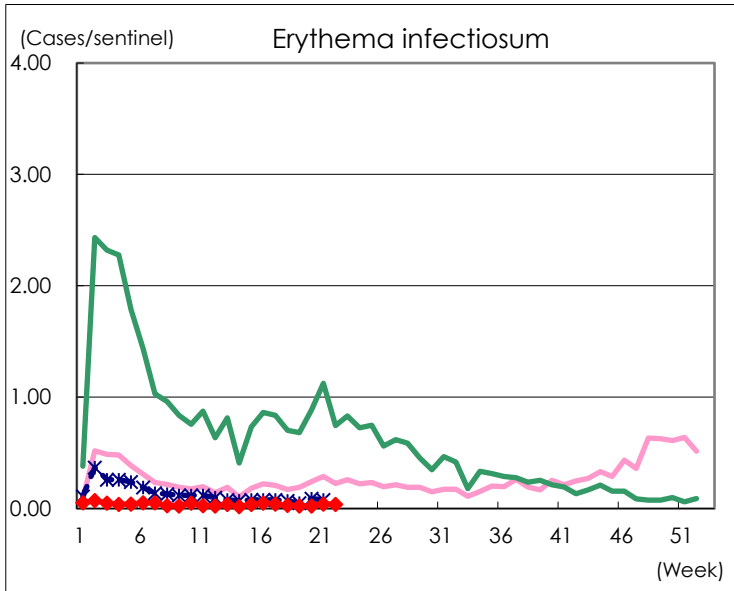
Number of patients with the diseases to be reported
by the designated clinics and hospitals

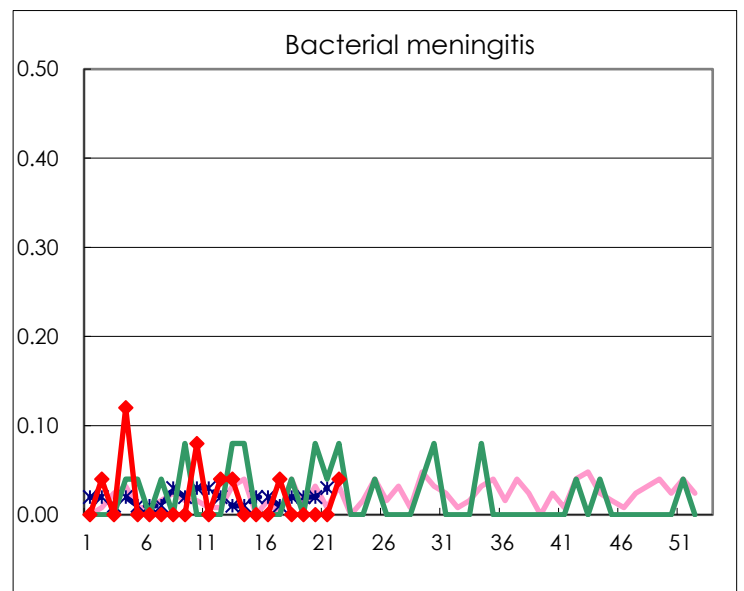
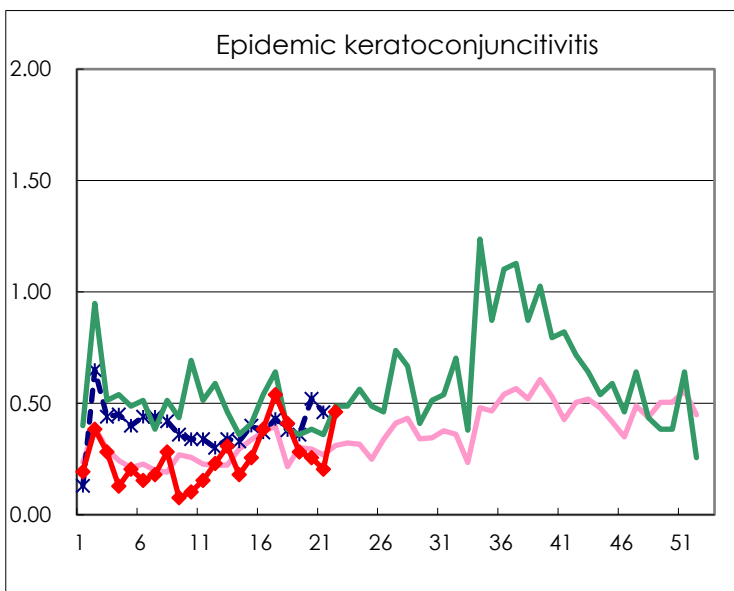
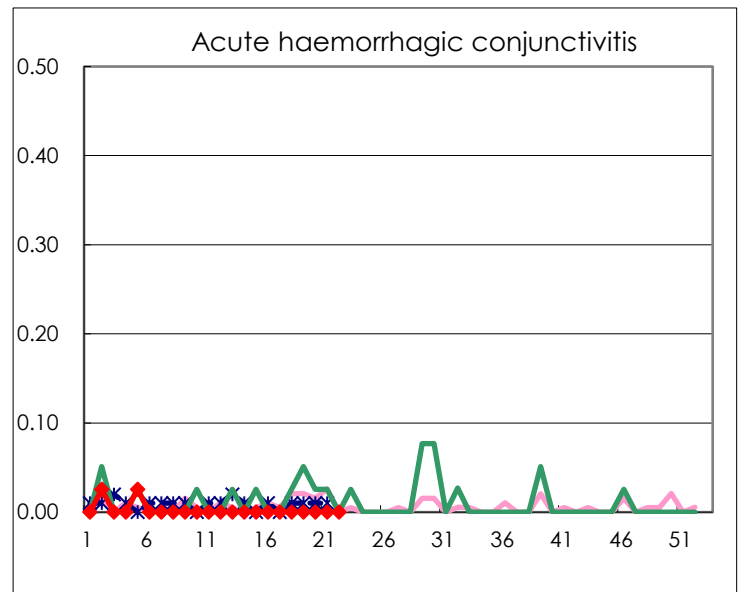
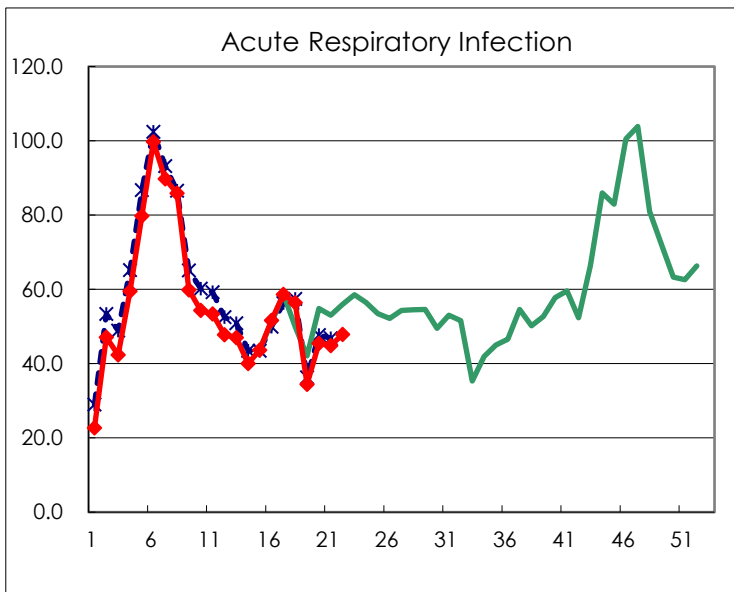
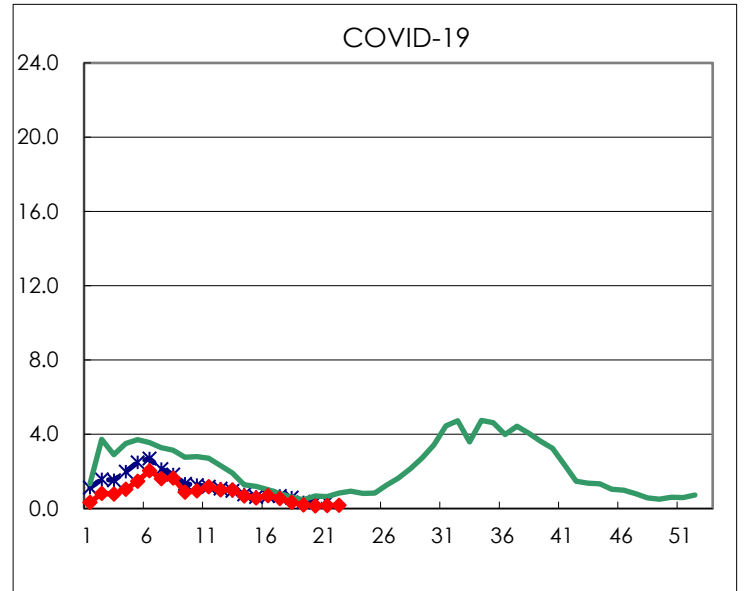
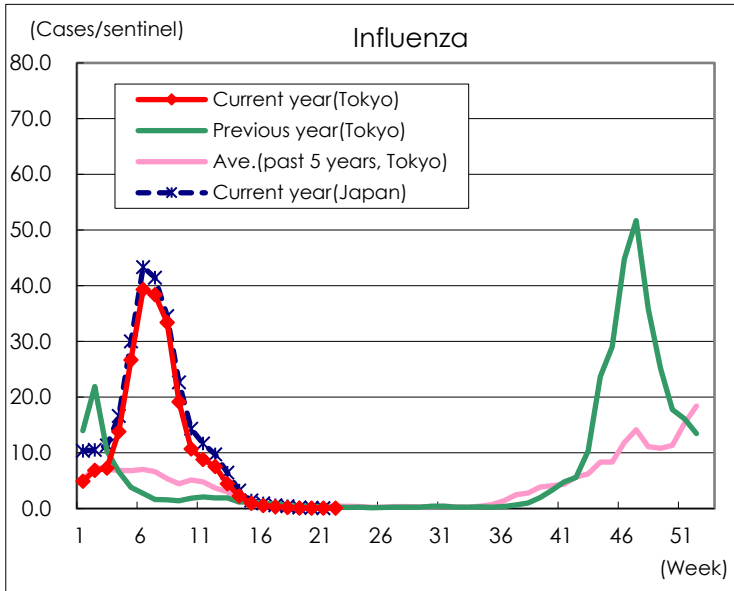
Diseases	Tokyo				
	19th	20th	21st	22nd	/sentinel
Respiratory syncytial virus infection	23	37	55	52	0.20
Pharyngoconjunctival fever	41	82	79	118	0.45
Group A streptococcal pharyngitis	241	433	524	499	1.90
Infectious gastroenteritis	878	1,416	1,512	1,565	5.95
Chickenpox	86	118	86	84	0.32
Hand, foot, and mouth disease	43	109	128	225	0.86
Erythema infectiosum	6	6	11	10	0.04
Exanthem subitum	65	101	108	79	0.30
Herpangina	7	22	34	49	0.19
Mumps	12	9	16	11	0.04
Kawasaki disease	3	7	7	2	0.01
Cold with exanthems	9	18	15	20	0.08
Influenza	30	33	24	26	0.06
COVID-19	78	62	64	71	0.17
Acute Respiratory Infection	14,400	19,000	18,758	19,993	47.83
Acute hemorrhagic conjunctivitis					
Epidemic keratoconjunctivitis	11	10	8	18	0.46
Bacterial meningitis				1	0.04
Aseptic meningitis		2	5		
Mycoplasma pneumonia	3	2	1	2	0.08
Chlamydial pneumonia (excluding psittacosis)		2	1	1	0.04
Infectious gastroenteritis (only by Rotavirus)	3	2	3	1	0.04
Influenza-Associated Hospitalizations		1	3		
COVID-19-Associated Hospitalizations	5	10	9	5	0.20

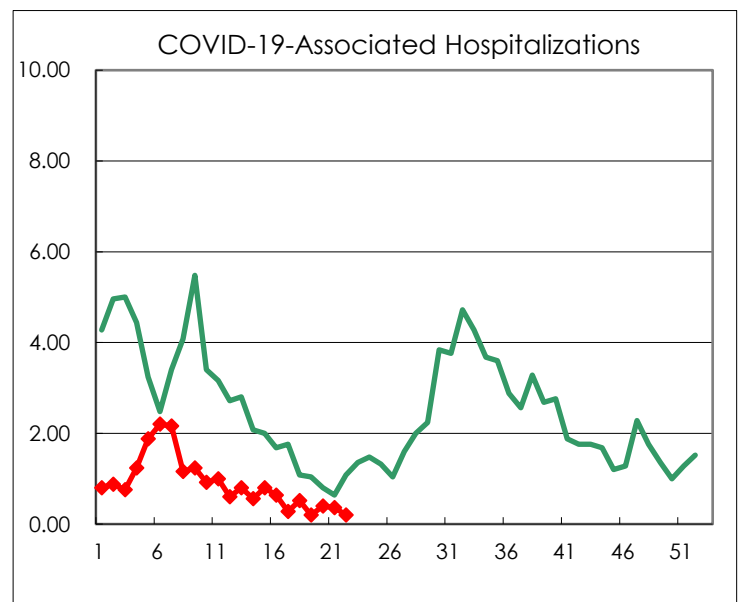
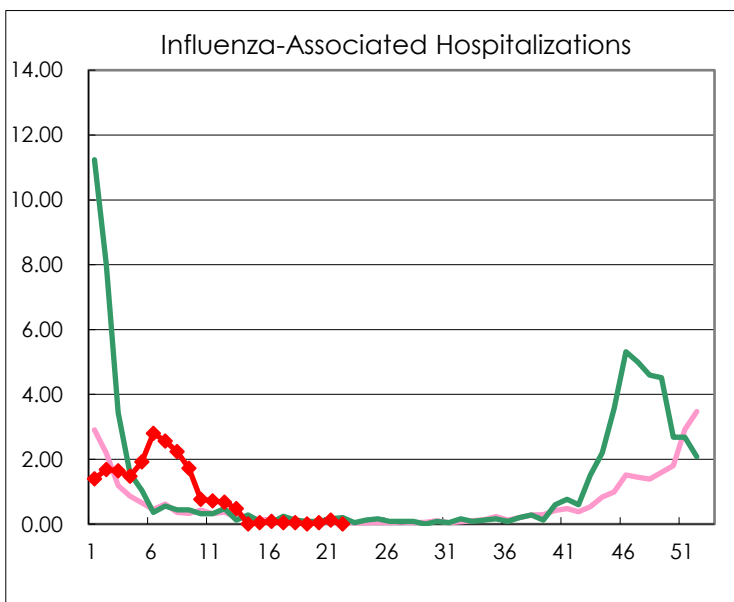
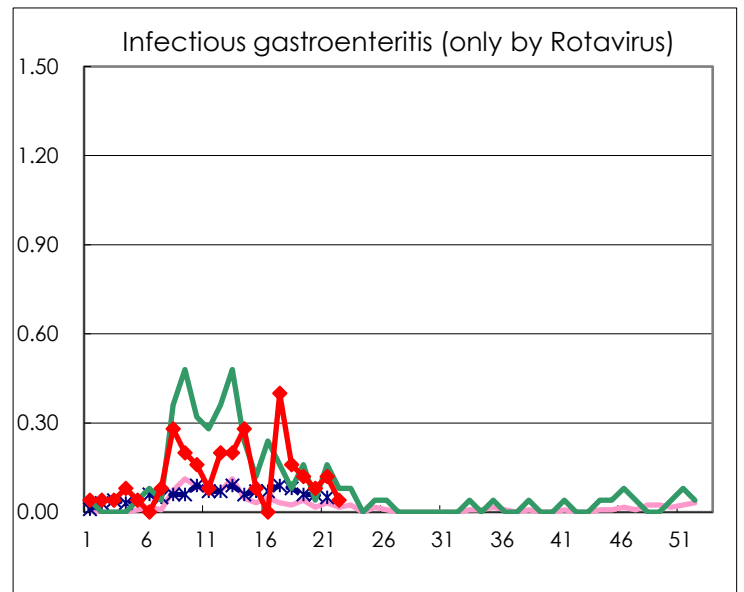
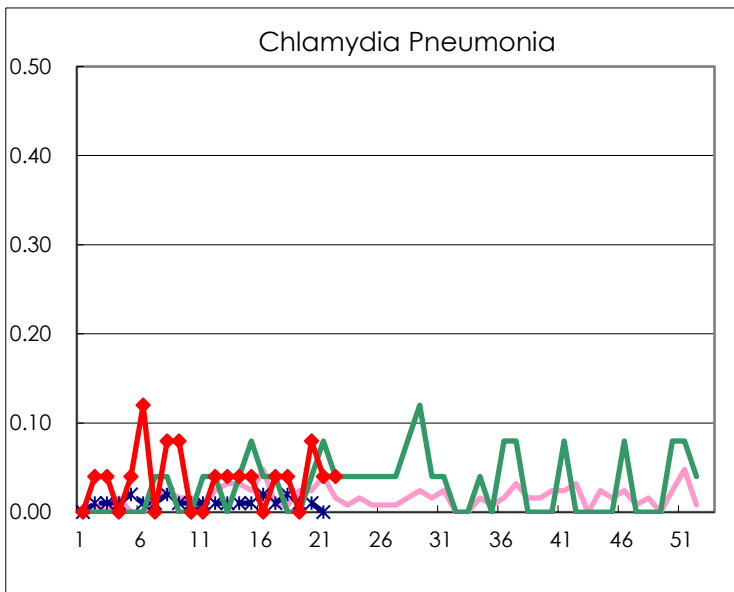
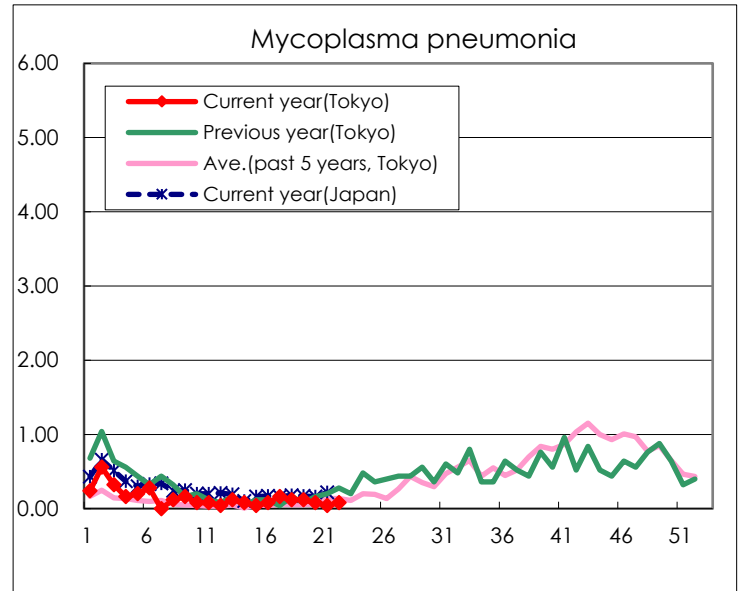
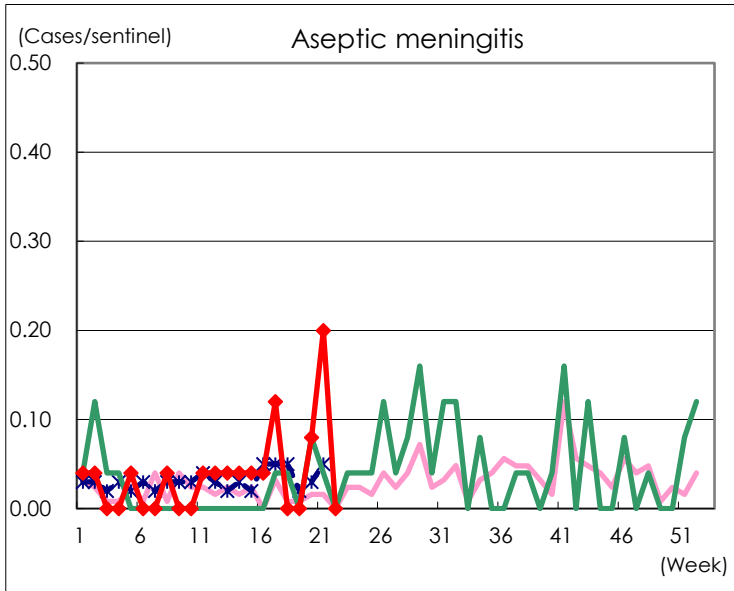
(Blank means 0.)

Disease Trend Graph (weekly reported cases per sentinel in comparison)









Number of sentinel facilities for weekly reporting		
Types of sentinels	Number of sentinels	Sentinels having reported
Pediatric	264	263
Acute Respiratory Infection	419	418
Ophthalmic	39	39
Specially- designated	25	25