

---

INFECTIOUS DISEASES WEEKLY REPORT

TOKYO IDWR

Tokyo Metropolitan Infectious Disease Surveillance Center

**11 June 2026 / Number 23**  
**( 6/1 ~ 6/7 )**

## Surveillance System in Tokyo, Japan

The infectious diseases which all physicians must report  
All physicians must report to health centers the incidence of the diseases which are shown at page one. Health centers electronically report the individual cases to Tokyo Metropolitan Infectious Disease Surveillance Center.

The infectious diseases required to be reported by the sentinels  
The numbers of patients who visit the sentinel clinics or hospitals during a week are reported to health centers in Tokyo. And they electronically report the numbers to Tokyo Metropolitan Infectious Disease Surveillance Center. We have about 500 sentinel clinics and hospitals in Tokyo.

Tokyo Metropolitan Institute of Public Health

TEL:81-3-3363-3213 FAX:81-3-5332-7365

e-mail:tmiph@section.metro.tokyo.jp

URL:idsc.tmiph.metro.tokyo.lg.jp/

---

Number of patients with the diseases which all physicians must report

Category	Diseases	Tokyo				
		20th	21st	22nd	23rd	Cum 2026
I	Ebola hemorrhagic fever					
	Crimean-Congo hemorrhagic fever					
	Smallpox					
	South American hemorrhagic fever					
	Plague					
	Marburg disease					
	Lassa fever					
II	Acute poliomyelitis					
	Tuberculosis	41	46	38	43	909
	Diphtheria					
	Severe Acute Respiratory Syndrome(SARS)					
	Middle East Respiratory Syndrome (MERS)					
	Avian influenza H5N1					
III	Avian influenza H7N9					
	Cholera					
	Shigellosis	3	1		1	13
	Enterohemorrhagic Escherichia coli infection	2	6	7	14	93
	Typhoid fever		1	1		6
IV	Paratyphoid fever					1
	Hepatitis E	6	6	3	6	78
	West Nile fever					
	Hepatitis A	5	5	3	3	38
	Echinococcosis					
	Mpox	3	3	2	1	56
	Yellow fever					
	Psittacosis					
	Omsk hemorrhagic fever					
	Relapsing fever					
	Kyasanur forest disease					
	Q fever					
	Rabies					
	Coccidioidomycosis		1			2
	Zika virus infection					
	Severe Fever with Thrombocytopenia Syndrome					1
	Hemorrhagic fever with renal syndrome					
	Western equine encephalitis					
	Tick-borne encephalitis					
	Anthrax					
	Chikungunya fever				1	1
	Scrub typhus(Tsutsugamushi disease)					
	Dengue fever	1			1	10
	Eastern equine encephalitis					
	Avian influenza (excluding H5N1 and H7N9)					
	Nipah virus infection					
	Japanese spotted fever					
	Japanese encephalitis					
	Hantavirus pulmonary syndrome					
	Herpes B virus infection					
	Glanders					
	Brucellosis					
	Venezuelan equine encephalitis					
	Hendra virus infection					
	Epidemic typhus					
	Botulism					
	Malaria					3
Tularemia						
Lyme disease						
Lyssavirus infection(excluding rabies)						
Rift valley fever						
Melioidosis						
Legionellosis	3	4	2	4	57	
Leptospirosis					2	
Rocky mountain spotted fever						

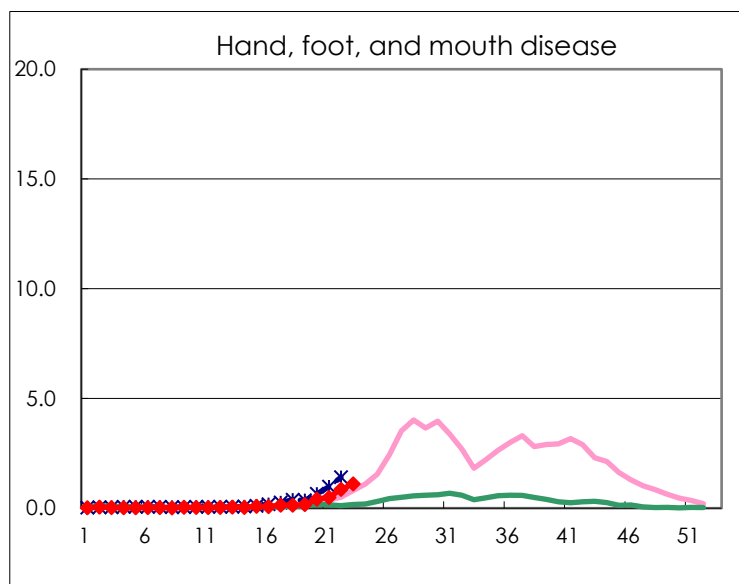
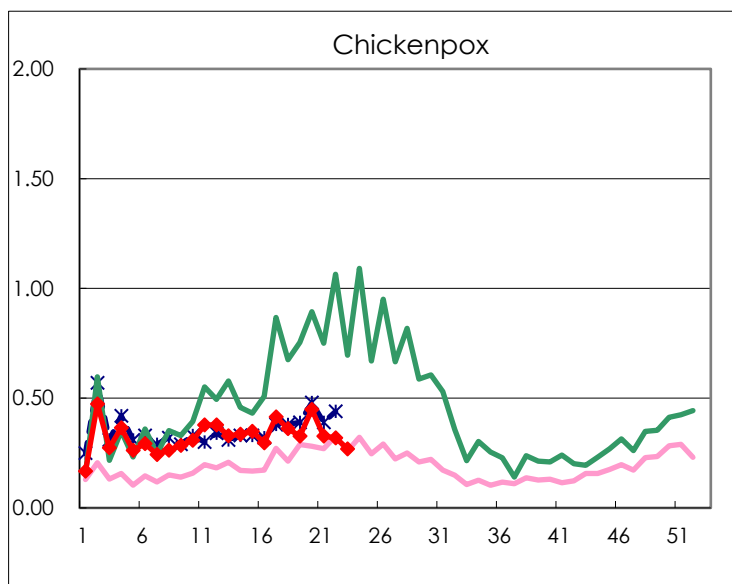
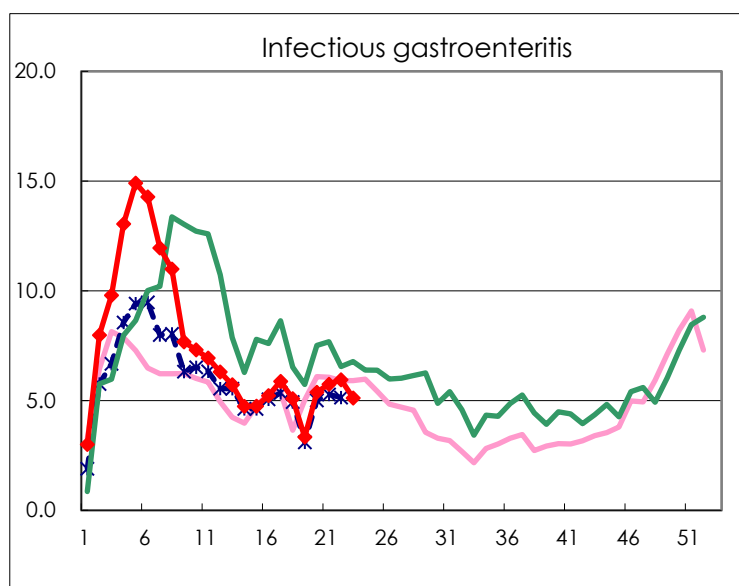
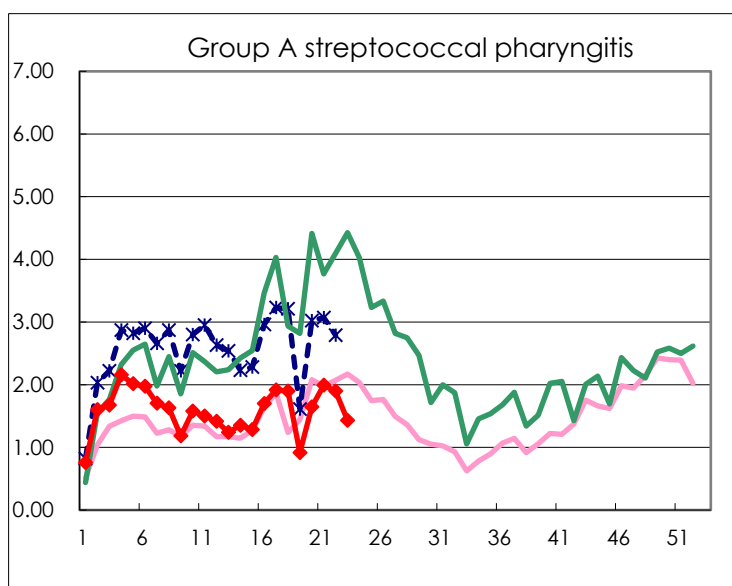
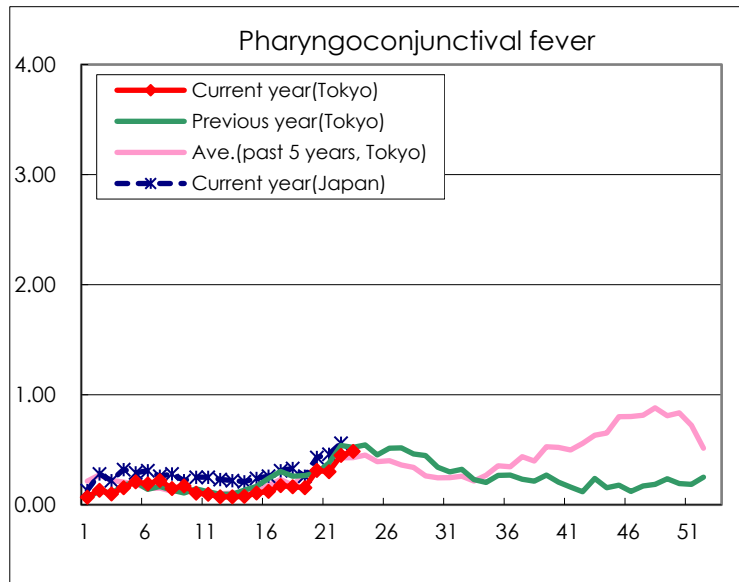
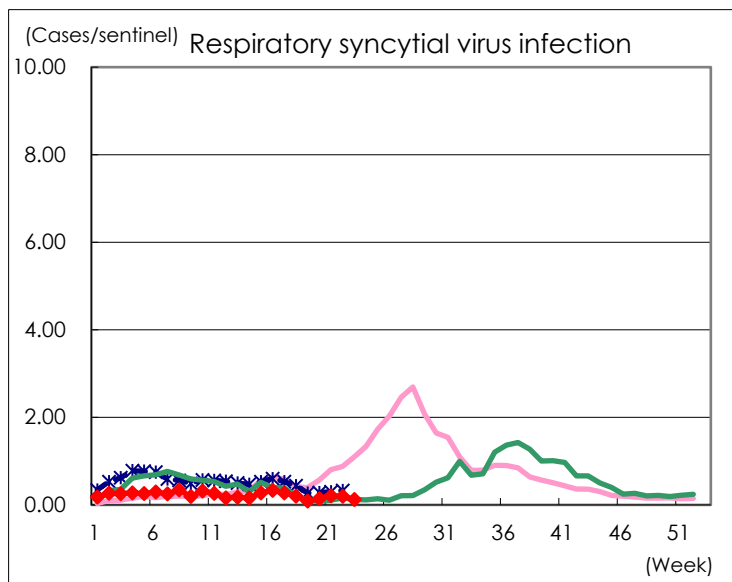
Category	Diseases	Tokyo				Cum 2026
		20th	21st	22nd	23rd	
V	Amebiasis		2	2	1	44
	Viral hepatitis(excluding hepatitis A and E)		2	2	2	20
	CRE infection	5	5	2	1	52
	Acute Flaccid Paralysis (excluding Acute poliomyelitis)					5
	Acute encephalitis(excluding JE and WNE)	1		1	5	18
	Cryptosporidiosis					1
	Creutzfeldt-Jakob disease	1		1		8
	Severe invasive streptococcal infections(TSLs)	3	4		2	58
	Acquired immunodeficiency syndrome (AIDS)	2	8	5	4	119
	Giardiasis			1		7
	Invasive <i>Haemophilus influenzae</i> disease	4	3	2	2	38
	Invasive meningococcal disease		1			3
	Invasive pneumococcal disease	10	8	7	4	158
	Varicella (limited to hospitalized case)	1	4	4	4	51
	Congenital rubella syndrome					
	MDRP infection	1	1	1		11
	Syphilis	73	56	65	64	1,195
	Disseminated cryptococcosis		1			10
	Tetanus	1				4
	Vancomycin-resistant <i>S. aureus</i> infection					
	Vancomycin-resistant <i>Enterococcus</i> infection	1				5
	Pertussis	25	16	18	22	397
	Rubella					1
Measles	10	8	7		260	
MDRA infection					1	

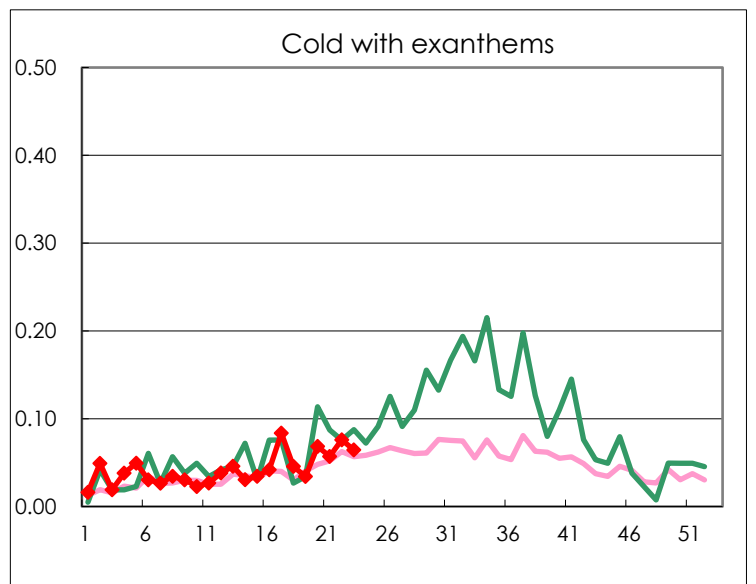
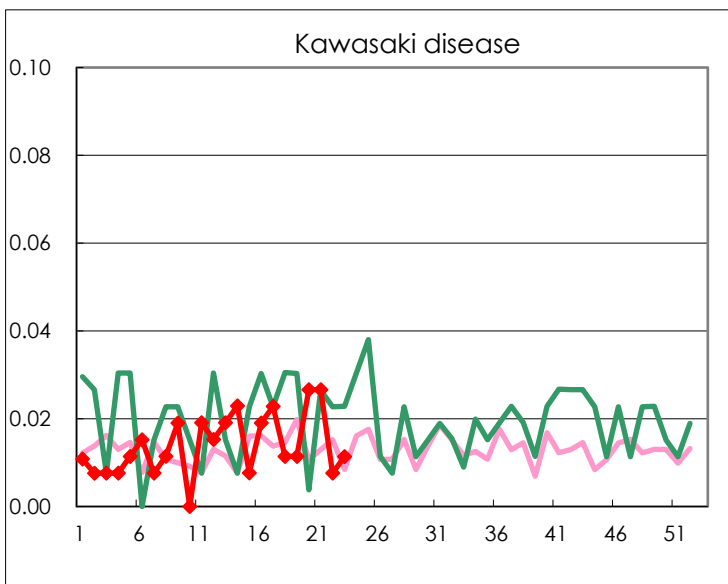
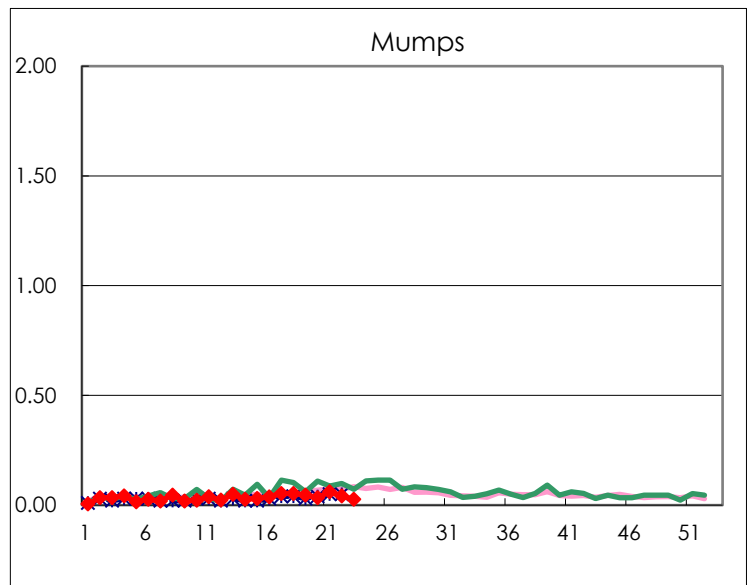
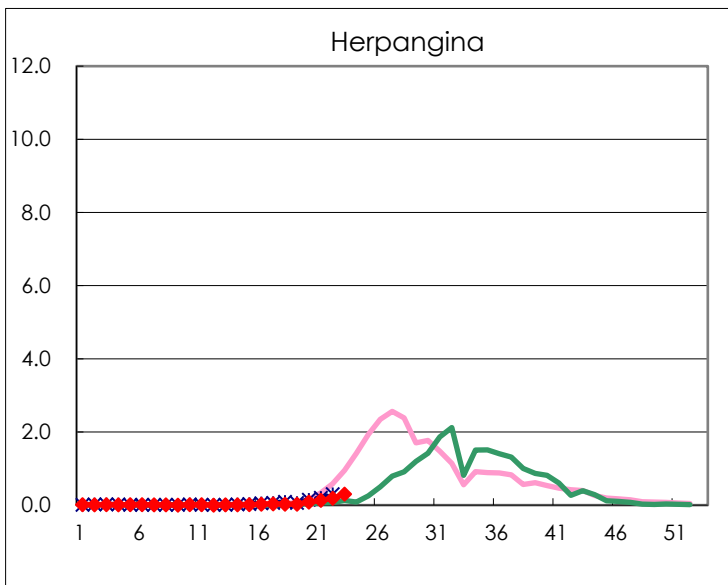
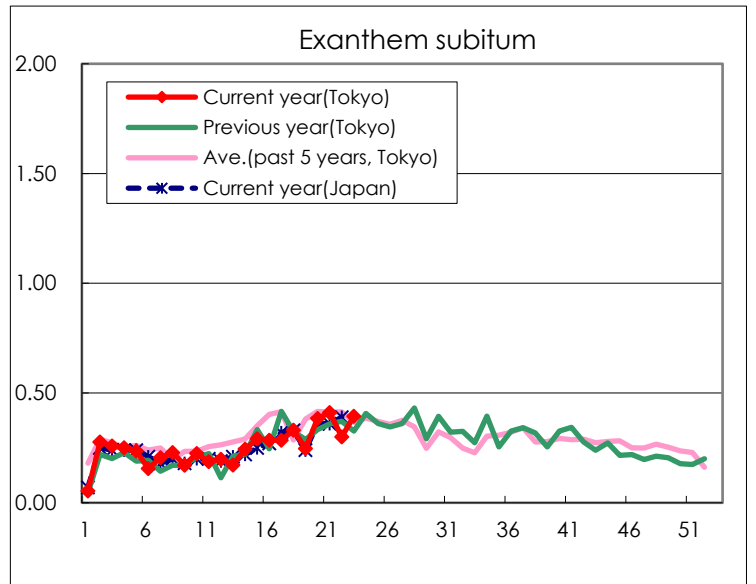
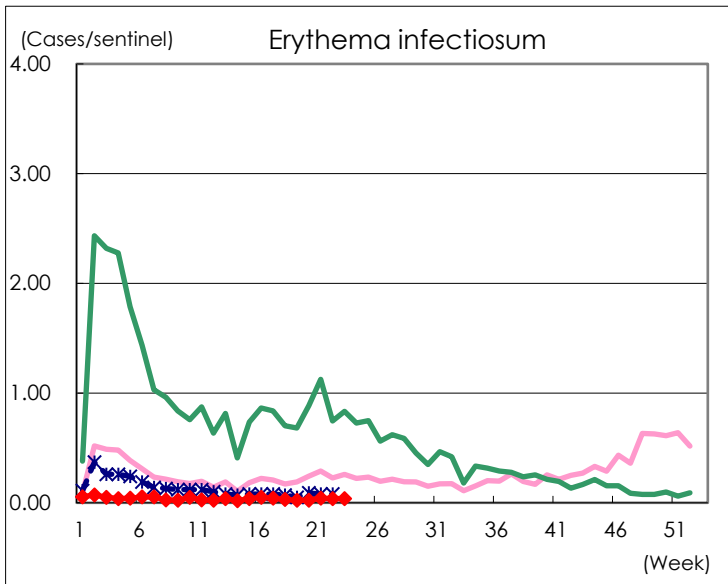
Number of patients with the diseases to be reported  
by the designated clinics and hospitals

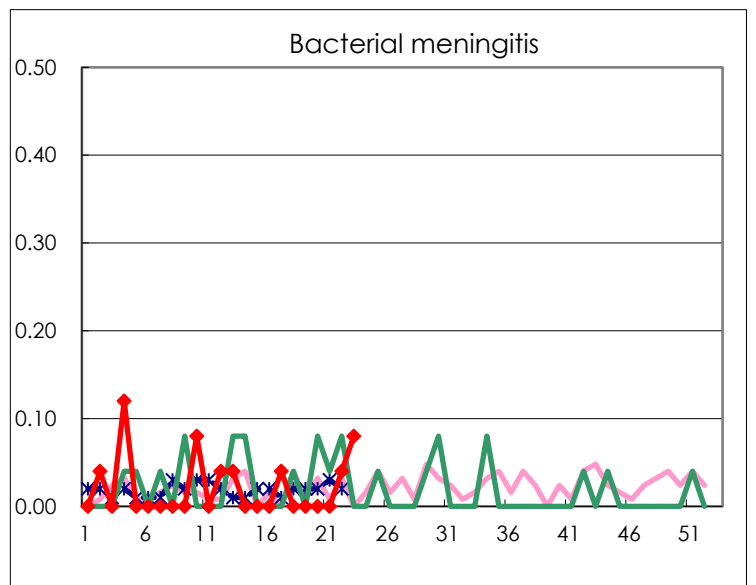
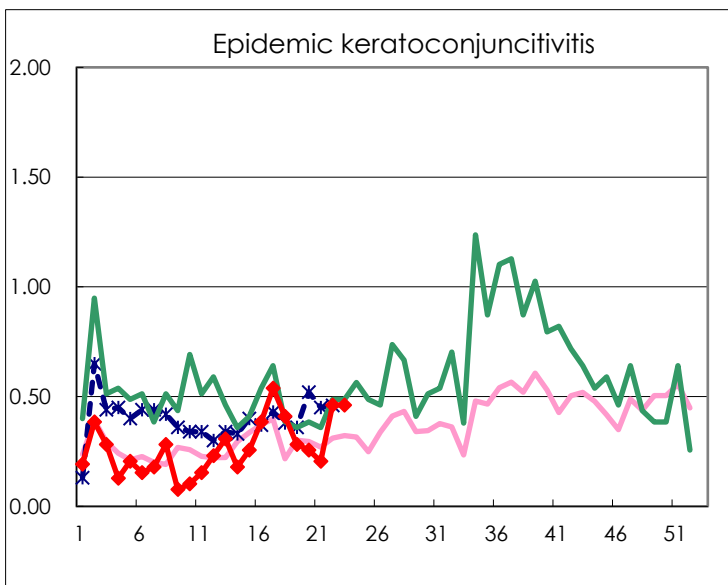
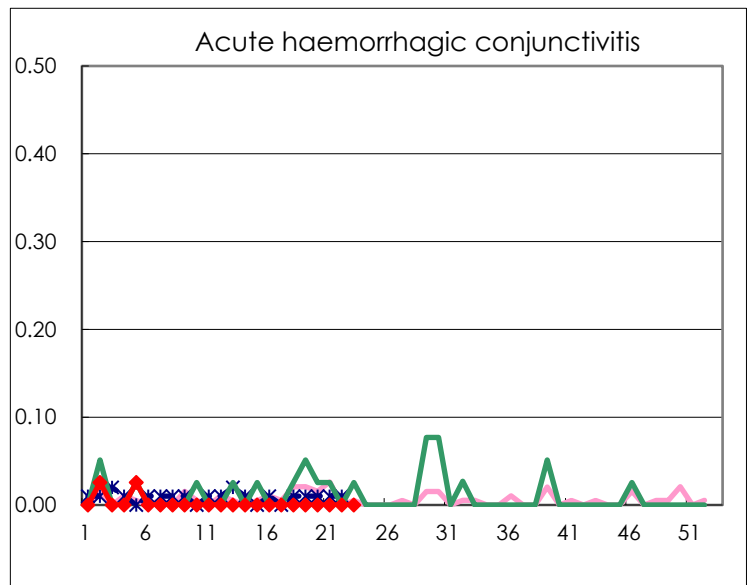
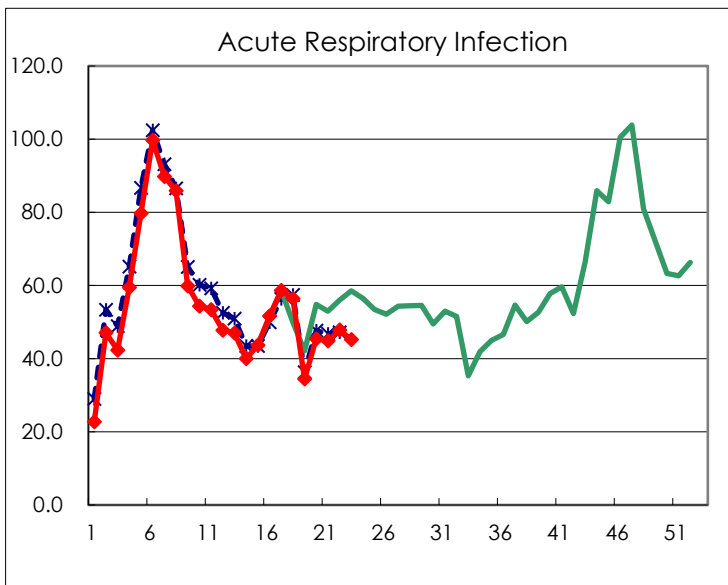
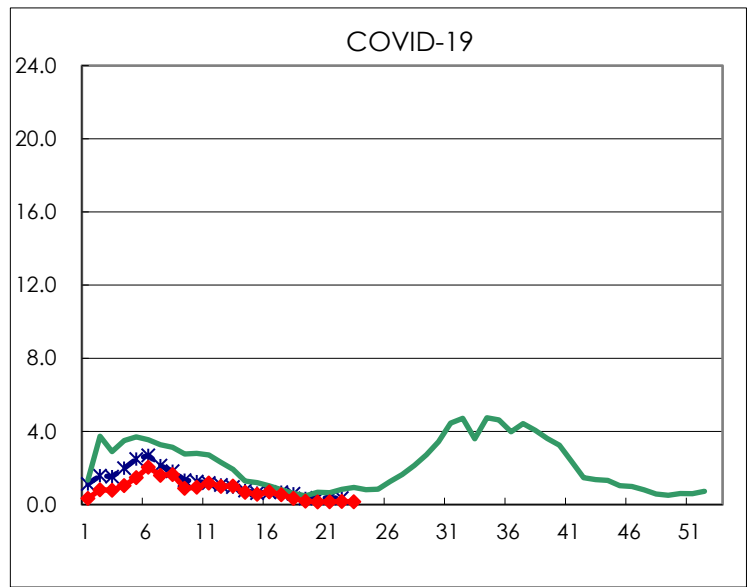
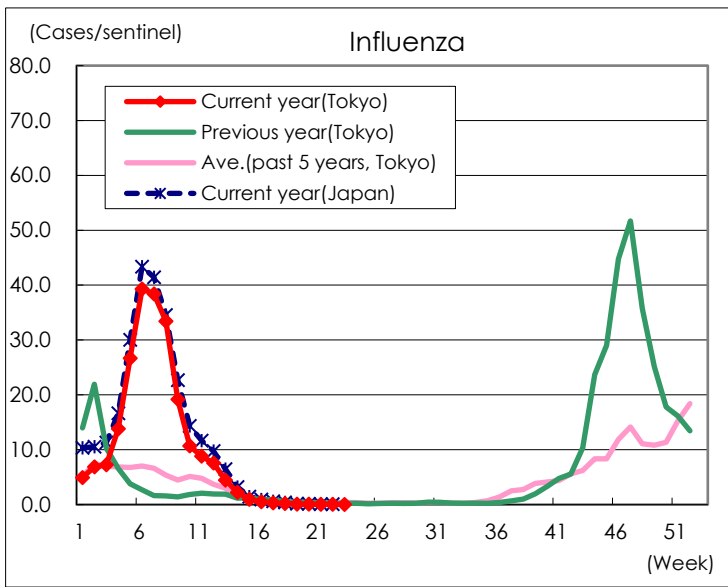
Diseases	Tokyo				
	20th	21st	22nd	23rd	/sentinel
Respiratory syncytial virus infection	37	55	52	33	0.13
Pharyngoconjunctival fever	82	79	118	128	0.48
Group A streptococcal pharyngitis	433	524	499	378	1.43
Infectious gastroenteritis	1,416	1,512	1,565	1,352	5.12
Chickenpox	118	86	84	71	0.27
Hand, foot, and mouth disease	109	128	225	291	1.10
Erythema infectiosum	6	11	10	10	0.04
Exanthem subitum	101	108	79	104	0.39
Herpangina	22	34	49	80	0.30
Mumps	9	16	11	7	0.03
Kawasaki disease	7	7	2	3	0.01
Cold with exanthems	18	15	20	17	0.06
Influenza	33	24	26	14	0.03
COVID-19	62	64	71	66	0.16
Acute Respiratory Infection	19,000	18,758	19,993	18,943	45.21
Acute hemorrhagic conjunctivitis					
Epidemic keratoconjunctivitis	10	8	18	18	0.46
Bacterial meningitis			1	2	0.08
Aseptic meningitis	2	5		3	0.12
<i>Mycoplasma pneumoniae</i>	2	1	2	4	0.16
Chlamydial pneumonia (excluding psittacosis)	2	1	1	1	0.04
Infectious gastroenteritis (only by Rotavirus)	2	3	1		
Influenza-Associated Hospitalizations	1	3			
COVID-19-Associated Hospitalizations	10	9	5	10	0.40

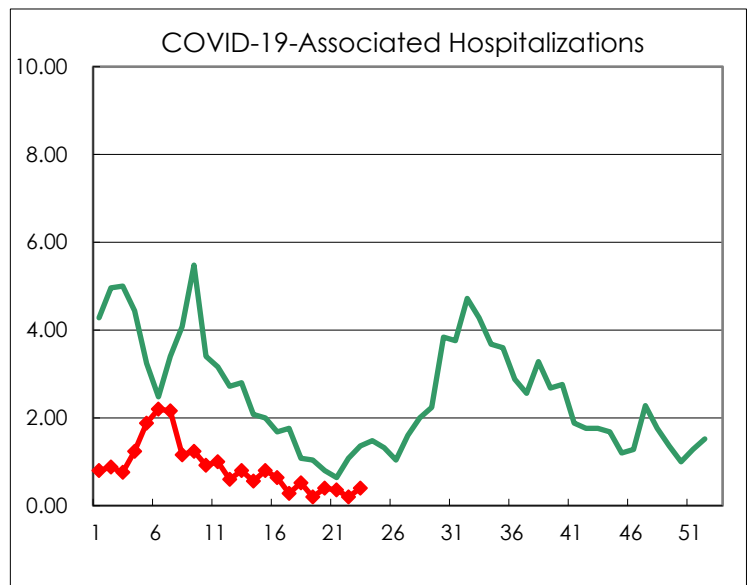
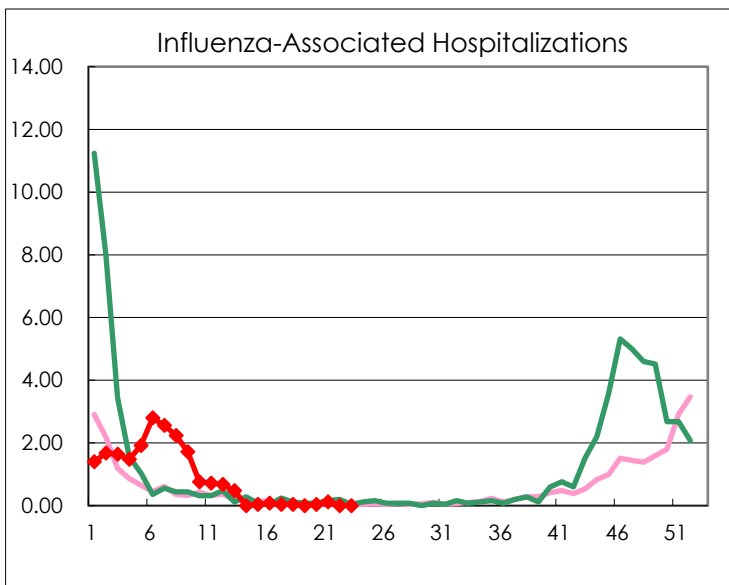
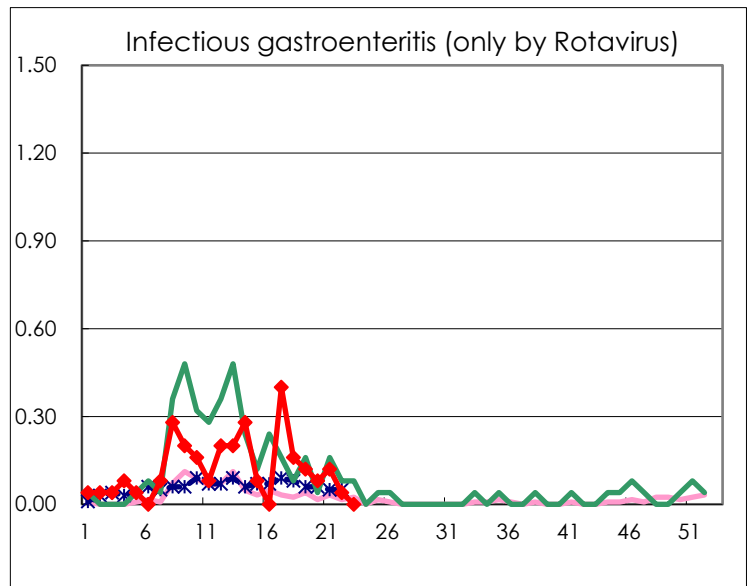
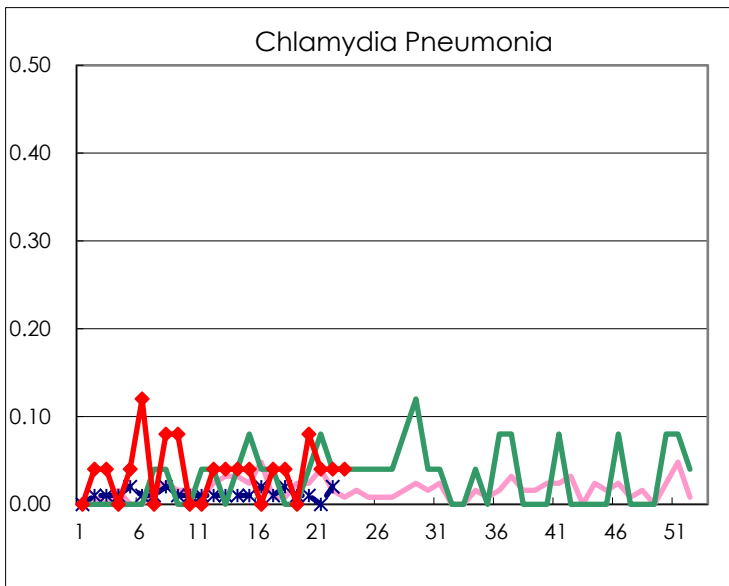
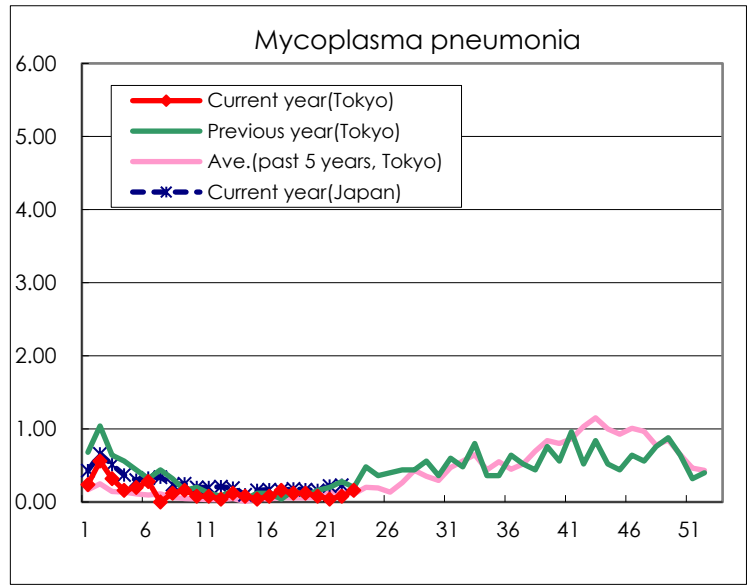
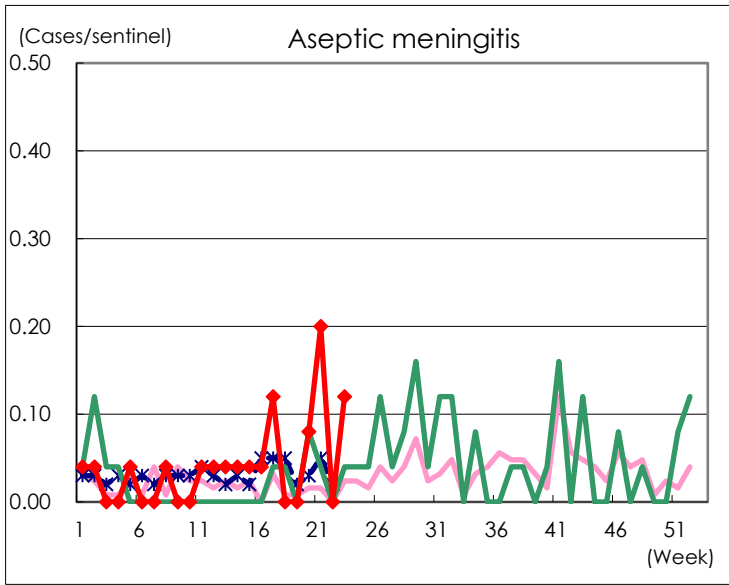
( Blank means 0. )

# Disease Trend Graph (weekly reported cases per sentinel in comparison)









Number of sentinel facilities for weekly reporting		
Types of sentinels	Number of sentinels	Sentinels having reported
Pediatric	264	264
Acute Respiratory Infection	419	419
Ophthalmic	39	39
Specially-designated	25	25