

---

INFECTIOUS DISEASES WEEKLY REPORT

# TOKYO IDWR

Tokyo Metropolitan Infectious Disease Surveillance Center

**25 June 2026 / Number 25**  
**( 6/15 ~ 6/21 )**

## Surveillance System in Tokyo, Japan

The infectious diseases which all physicians must report  
All physicians must report to health centers the incidence of the diseases which are shown at page one. Health centers electronically report the individual cases to Tokyo Metropolitan Infectious Disease Surveillance Center.

The infectious diseases required to be reported by the sentinels  
The numbers of patients who visit the sentinel clinics or hospitals during a week are reported to health centers in Tokyo. And they electronically report the numbers to Tokyo Metropolitan Infectious Disease Surveillance Center. We have about 500 sentinel clinics and hospitals in Tokyo.

Tokyo Metropolitan Institute of Public Health

TEL:81-3-3363-3213 FAX:81-3-5332-7365

e-mail:tmiph@section.metro.tokyo.jp

URL:idsc.tmiph.metro.tokyo.lg.jp/

---

Number of patients with the diseases which all physicians must report

Category	Diseases	Tokyo				
		22nd	23rd	24th	25th	Cum 2026
I	Ebola hemorrhagic fever					
	Crimean-Congo hemorrhagic fever					
	Smallpox					
	South American hemorrhagic fever					
	Plague					
	Marburg disease					
	Lassa fever					
II	Acute poliomyelitis					
	Tuberculosis	38	44	37	32	978
	Diphtheria					
	Severe Acute Respiratory Syndrome(SARS)					
	Middle East Respiratory Syndrome (MERS)					
	Avian influenza H5N1					
III	Avian influenza H7N9					
	Cholera					
	Shigellosis		1		1	14
	Enterohemorrhagic Escherichia coli infection	9	14	19	11	126
	Typhoid fever	1				6
IV	Paratyphoid fever					1
	Hepatitis E	3	7	6	2	87
	West Nile fever					
	Hepatitis A	3	3	1	6	45
	Echinococcosis					
	Mpox	2	1	1	2	59
	Yellow fever					
	Psittacosis					
	Omsk hemorrhagic fever					
	Relapsing fever					
	Kyasanur forest disease					
	Q fever					
	Rabies					
	Coccidioidomycosis					2
	Zika virus infection					
	Severe Fever with Thrombocytopenia Syndrome					1
	Hemorrhagic fever with renal syndrome					
	Western equine encephalitis					
	Tick-borne encephalitis					
	Anthrax					
	Chikungunya fever		1			1
	Scrub typhus(Tsutsugamushi disease)					
	Dengue fever		1	1		11
	Eastern equine encephalitis					
	Avian influenza (excluding H5N1 and H7N9)					
	Nipah virus infection					
	Japanese spotted fever			1		1
	Japanese encephalitis					
	Hantavirus pulmonary syndrome					
	Herpes B virus infection					
	Glanders					
	Brucellosis					
	Venezuelan equine encephalitis					
	Hendra virus infection					
	Epidemic typhus					
	Botulism					
	Malaria				1	4
	Tularemia					
Lyme disease						
Lyssavirus infection(excluding rabies)						
Rift valley fever						
Melioidosis						
Legionellosis	2	4	5	6	68	
Leptospirosis					2	
Rocky mountain spotted fever						

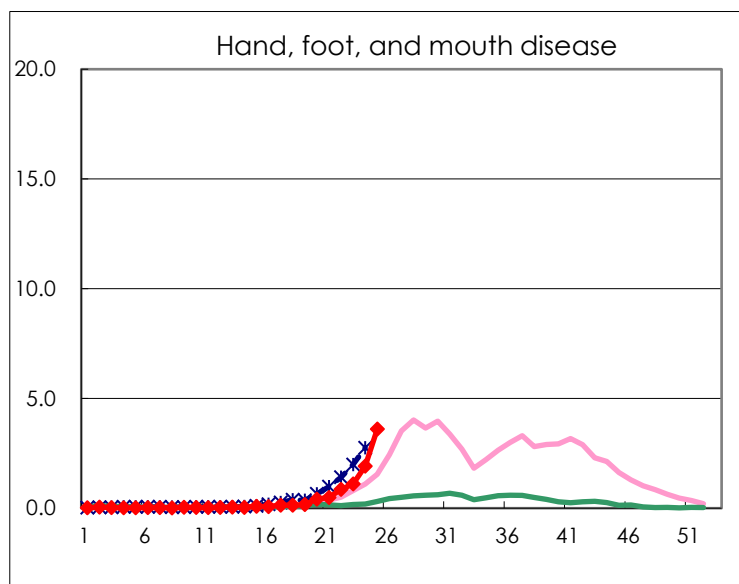
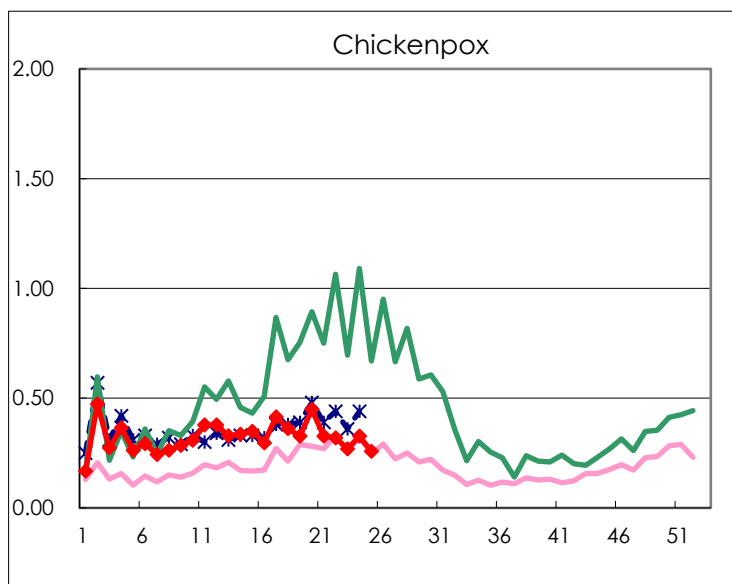
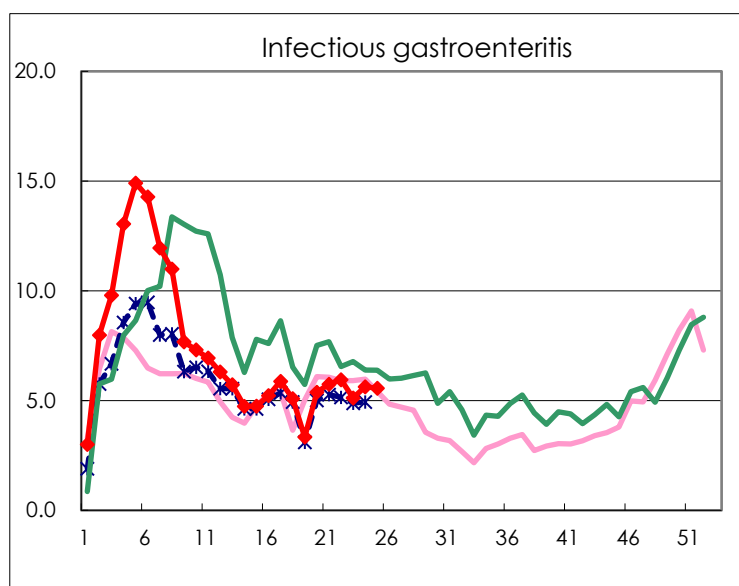
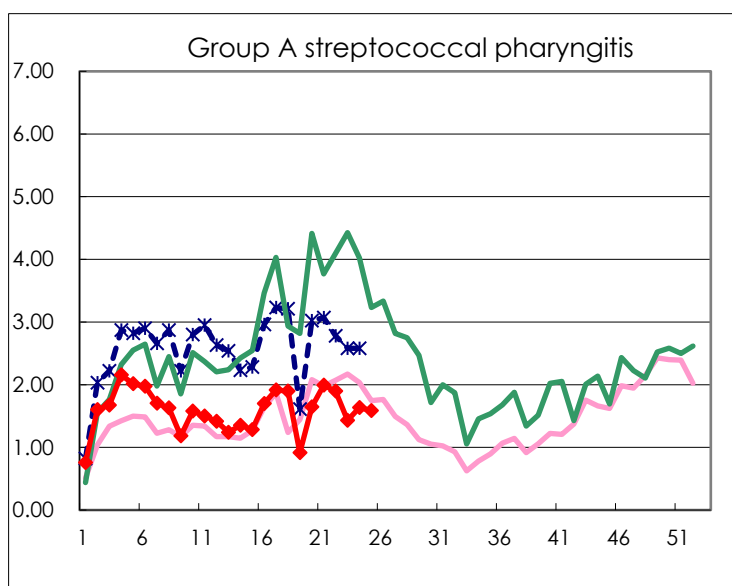
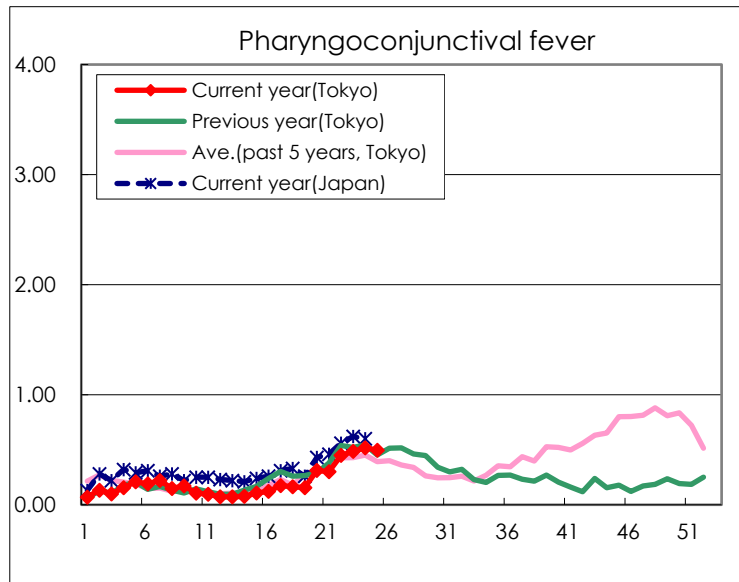
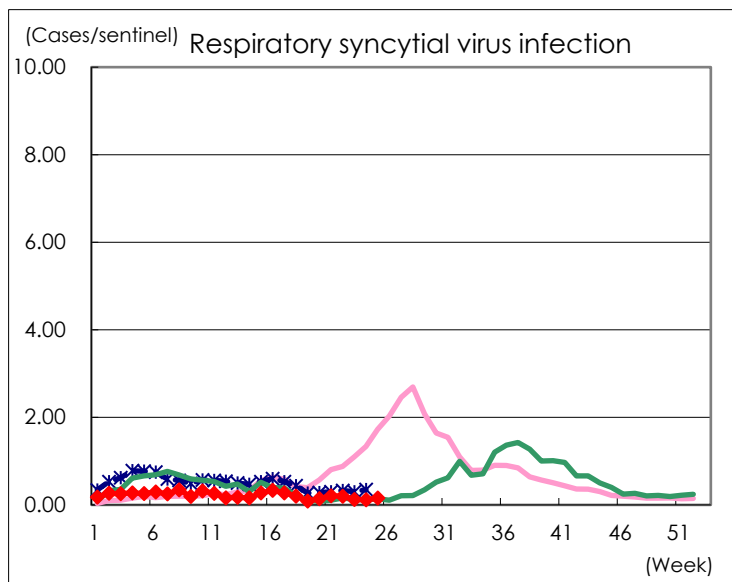
Category	Diseases	Tokyo				
		22nd	23rd	24th	25th	Cum 2026
V	Amebiasis	2	1	3	1	48
	Viral hepatitis(excluding hepatitis A and E)	2	2	1	1	22
	CRE infection	2	1	2	4	58
	Acute Flaccid Paralysis (excluding Acute poliomyelitis)			1		6
	Acute encephalitis(excluding JE and WNE)	1	5		1	19
	Cryptosporidiosis					1
	Creutzfeldt-Jakob disease	1				8
	Severe invasive streptococcal infections(TSLs)		2	2	4	64
	Acquired immunodeficiency syndrome (AIDS)	5	4	6	7	132
	Giardiasis	1				7
	Invasive <i>Haemophilus influenzae</i> disease	2	2	1	2	41
	Invasive meningococcal disease			1	1	5
	Invasive pneumococcal disease	7	4	7	2	167
	Varicella (limited to hospitalized case)	4	4	3	5	59
	Congenital rubella syndrome					
	MDRP infection	1		1	1	13
	Syphilis	66	66	48	64	1,310
	Disseminated cryptococcosis				1	11
	Tetanus					4
	Vancomycin-resistant <i>S. aureus</i> infection					
	Vancomycin-resistant <i>Enterococcus</i> infection					5
	Pertussis	18	23	16	17	431
	Rubella					1
Measles	7			2	262	
MDRA infection			1		2	

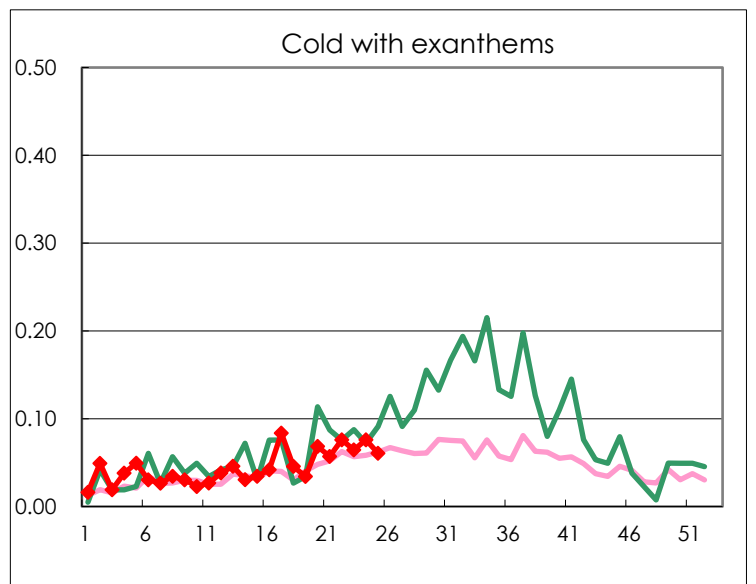
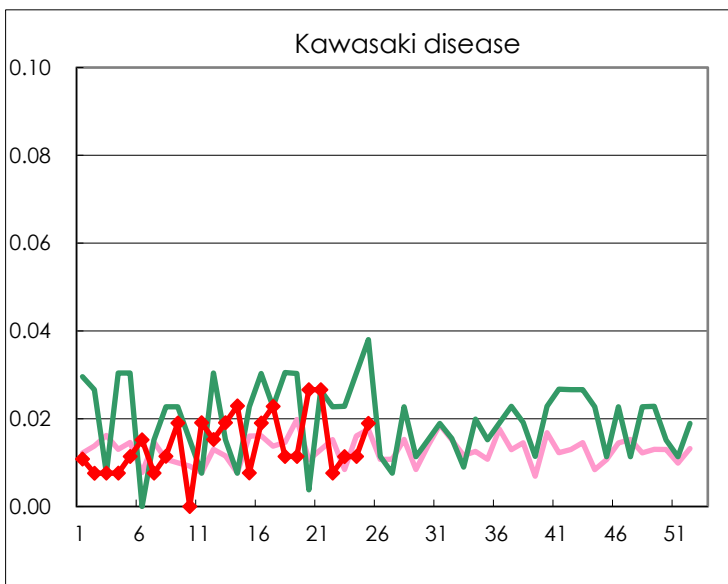
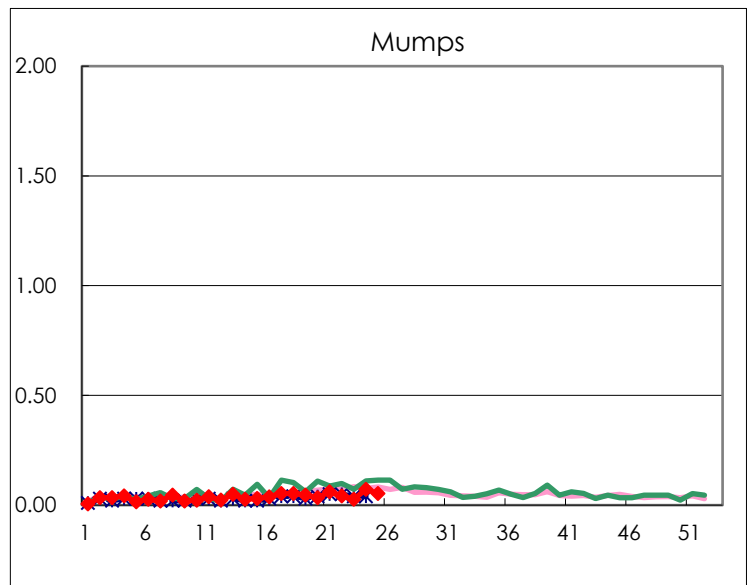
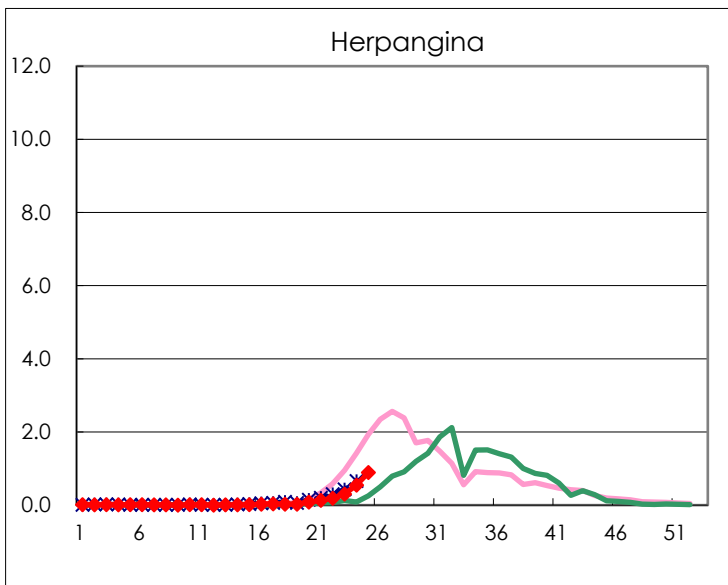
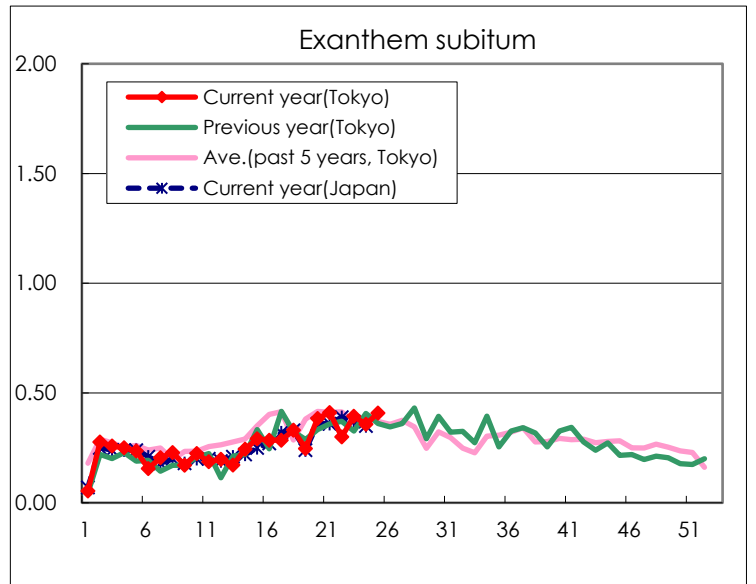
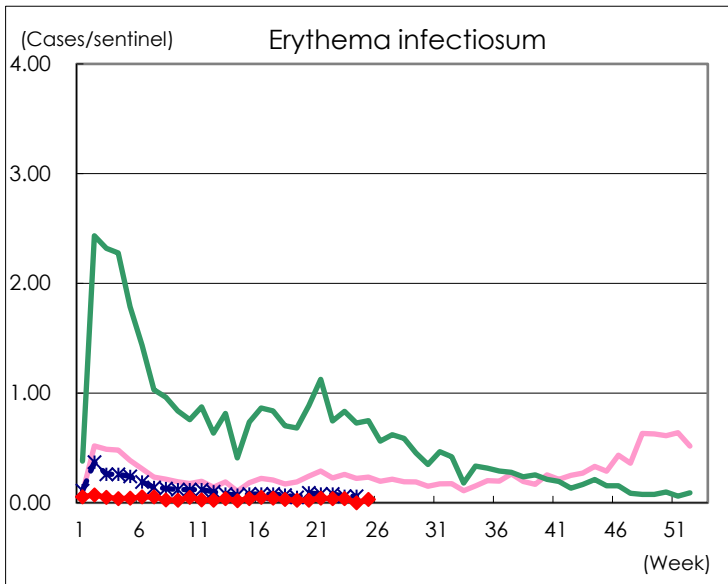
Number of patients with the diseases to be reported  
by the designated clinics and hospitals

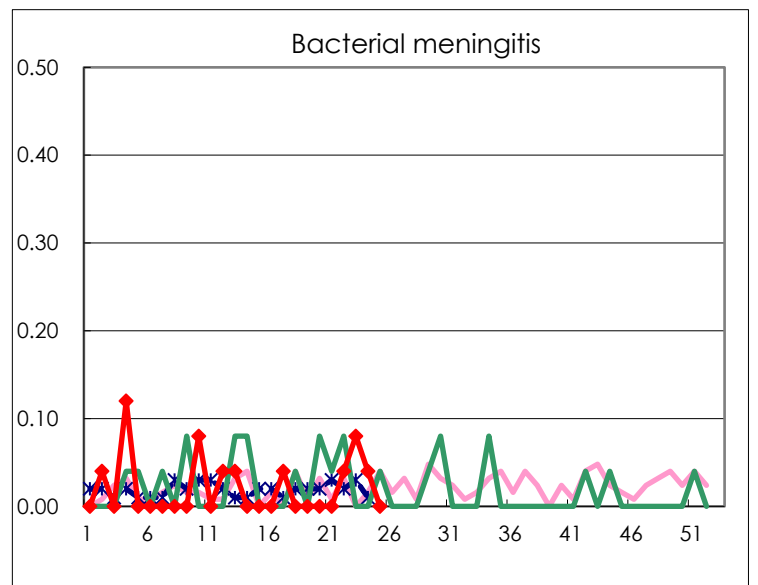
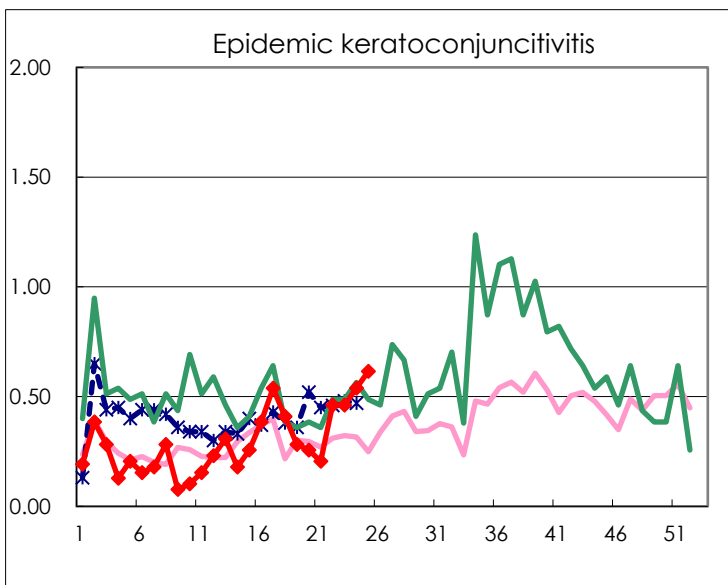
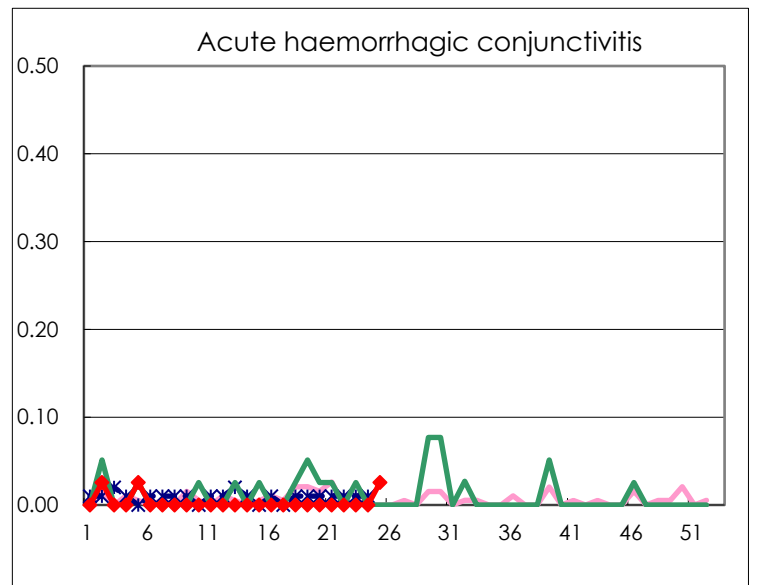
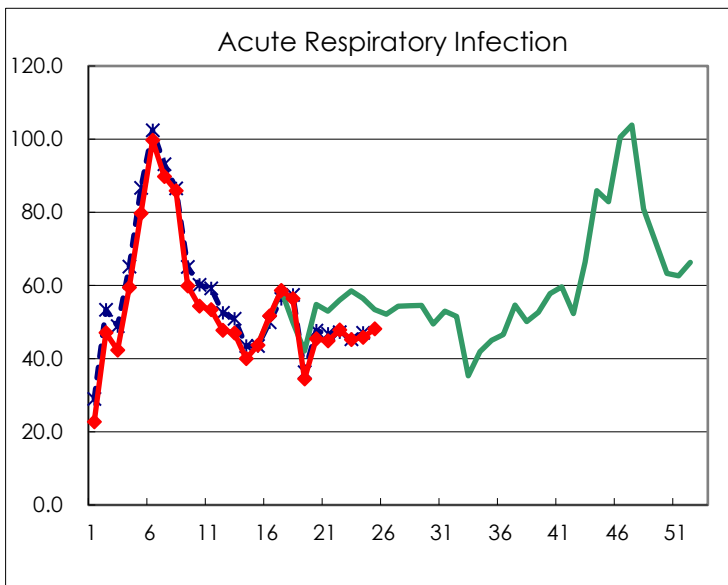
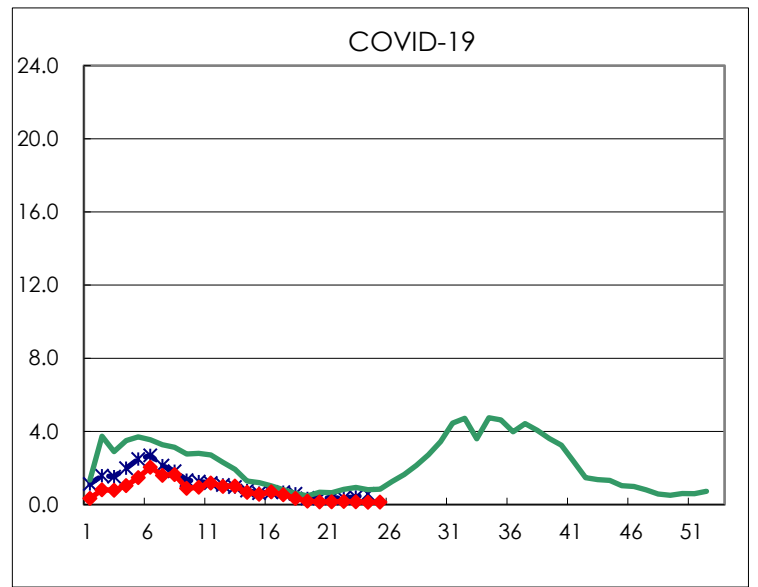
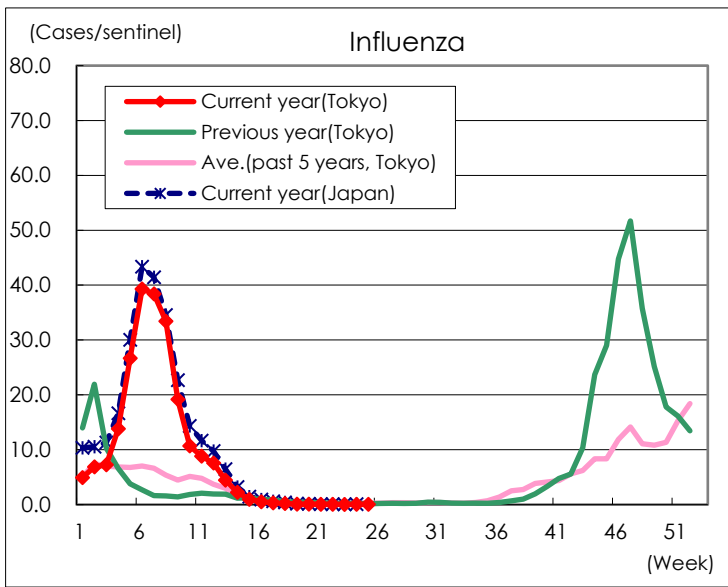
Diseases	Tokyo				
	22nd	23rd	24th	25th	/sentinel
Respiratory syncytial virus infection	52	33	31	41	0.16
Pharyngoconjunctival fever	118	128	136	131	0.50
Group A streptococcal pharyngitis	499	378	430	419	1.59
Infectious gastroenteritis	1,565	1,352	1,481	1,468	5.56
Chickenpox	84	71	86	68	0.26
Hand, foot, and mouth disease	225	291	504	951	3.60
Erythema infectiosum	10	10		8	0.03
Exanthem subitum	79	104	94	108	0.41
Herpangina	49	80	144	235	0.89
Mumps	11	7	19	14	0.05
Kawasaki disease	2	3	3	5	0.02
Cold with exanthems	20	17	20	16	0.06
Influenza	26	14	25	24	0.06
COVID-19	71	66	54	57	0.14
Acute Respiratory Infection	19,993	18,943	19,155	20,120	48.13
Acute hemorrhagic conjunctivitis				1	0.03
Epidemic keratoconjunctivitis	18	18	21	24	0.62
Bacterial meningitis	1	2	1		
Aseptic meningitis		3			
<i>Mycoplasma pneumoniae</i>	2	4	4	3	0.12
Chlamydial pneumonia (excluding psittacosis)	1	1			
Infectious gastroenteritis (only by Rotavirus)	1		3	1	0.04
Influenza-Associated Hospitalizations					
COVID-19-Associated Hospitalizations	5	10	6	8	0.32

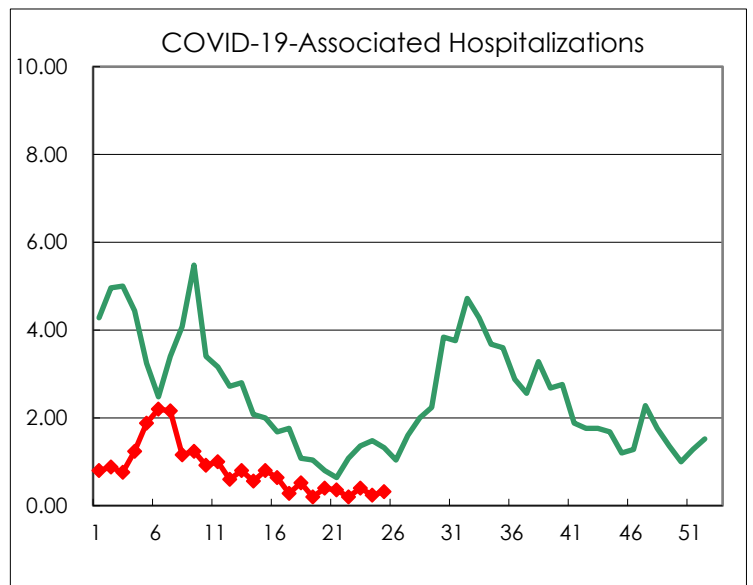
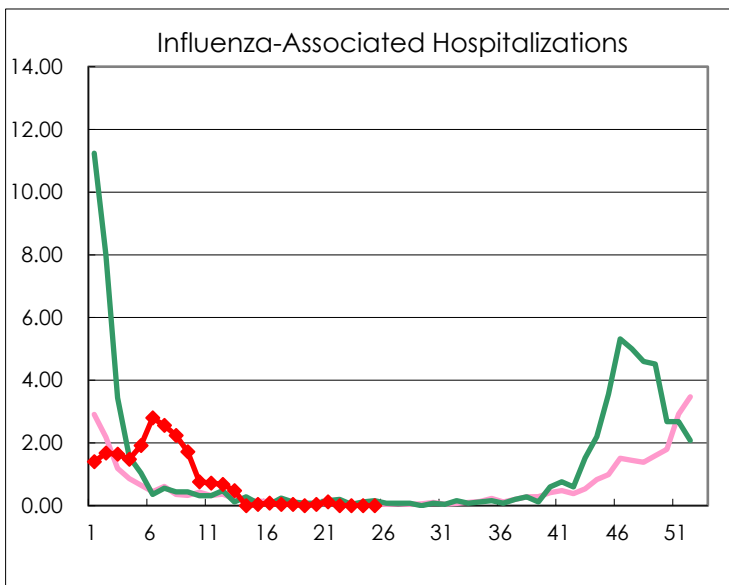
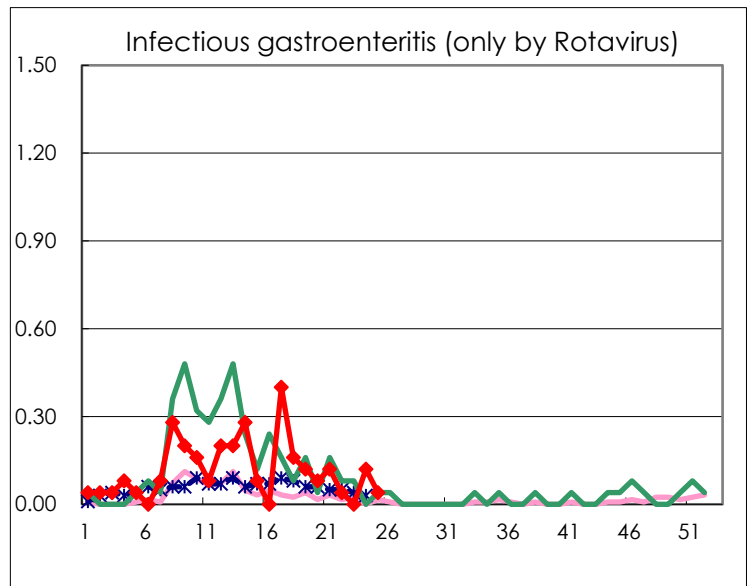
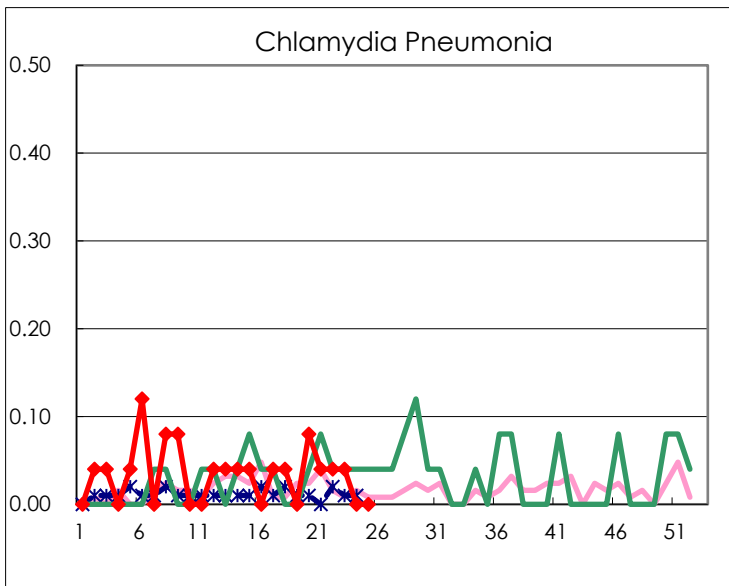
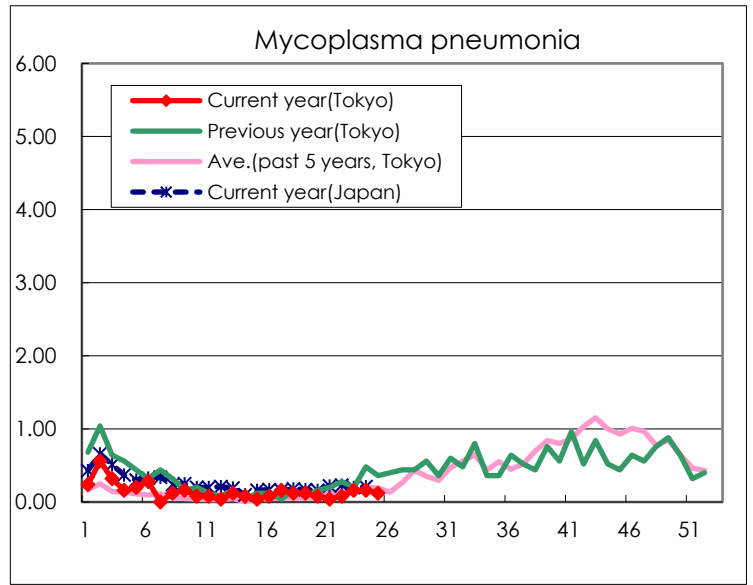
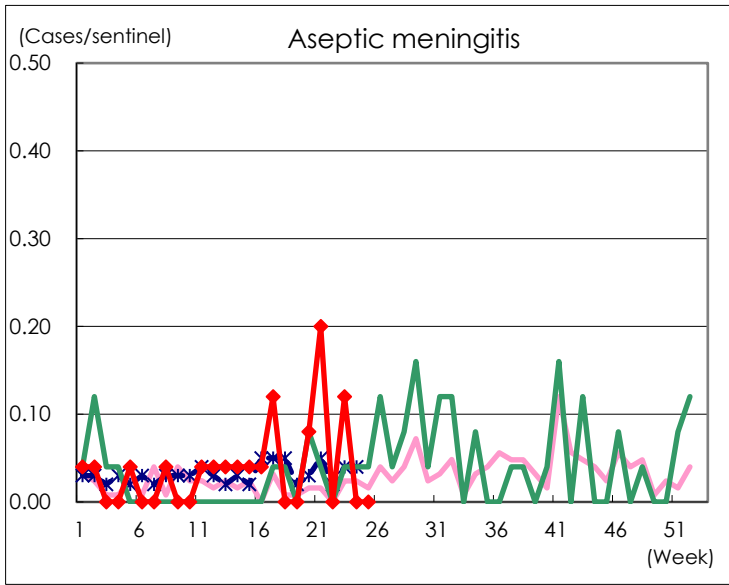
( Blank means 0. )

# Disease Trend Graph (weekly reported cases per sentinel in comparison)









Number of sentinel facilities for weekly reporting		
Types of sentinels	Number of sentinels	Sentinels having reported
Pediatric	264	264
Acute Respiratory Infection	419	418
Ophthalmic	39	39
Specially-designated	25	25