

---

INFECTIOUS DISEASES WEEKLY REPORT

# TOKYO IDWR

Tokyo Metropolitan Infectious Disease Surveillance Center

**2 July 2026 / Number 26**  
**( 6/22 ~ 6/28 )**

## Surveillance System in Tokyo, Japan

The infectious diseases which all physicians must report  
All physicians must report to health centers the incidence of the diseases which are shown at page one. Health centers electronically report the individual cases to Tokyo Metropolitan Infectious Disease Surveillance Center.

The infectious diseases required to be reported by the sentinels  
The numbers of patients who visit the sentinel clinics or hospitals during a week are reported to health centers in Tokyo. And they electronically report the numbers to Tokyo Metropolitan Infectious Disease Surveillance Center. We have about 500 sentinel clinics and hospitals in Tokyo.

Tokyo Metropolitan Institute of Public Health  
TEL:81-3-3363-3213 FAX:81-3-5332-7365  
e-mail:tmiph@section.metro.tokyo.jp  
URL:idsc.tmiph.metro.tokyo.lg.jp/

---

Number of patients with the diseases which all physicians must report

Category	Diseases	Tokyo				
		23rd	24th	25th	26th	Cum 2026
I	Ebola hemorrhagic fever					
	Crimean-Congo hemorrhagic fever					
	Smallpox					
	South American hemorrhagic fever					
	Plague					
	Marburg disease					
	Lassa fever					
II	Acute poliomyelitis					
	Tuberculosis	52	40	36	28	1,030
	Diphtheria					
	Severe Acute Respiratory Syndrome(SARS)					
	Middle East Respiratory Syndrome (MERS)					
	Avian influenza H5N1					
	Avian influenza H7N9					
III	Cholera					
	Shigellosis	1		1		13
	Enterohemorrhagic Escherichia coli infection	14	19	11	13	139
	Typhoid fever				1	7
	Paratyphoid fever					1
IV	Hepatitis E	7	6	2	2	89
	West Nile fever					
	Hepatitis A	3	1	6	5	50
	Echinococcosis					
	Mpox	1	1	2	5	64
	Yellow fever					
	Psittacosis					
	Omsk hemorrhagic fever					
	Relapsing fever					
	Kyasanur forest disease					
	Q fever					
	Rabies					
	Coccidioidomycosis					2
	Zika virus infection					
	Severe Fever with Thrombocytopenia Syndrome					1
	Hemorrhagic fever with renal syndrome					
	Western equine encephalitis					
	Tick-borne encephalitis					
	Anthrax					
	Chikungunya fever	1				1
	Scrub typhus(Tsutsugamushi disease)					
	Dengue fever	1	1		2	13
	Eastern equine encephalitis					
	Avian influenza (excluding H5N1 and H7N9)					
	Nipah virus infection					
	Japanese spotted fever		1			1
	Japanese encephalitis					
	Hantavirus pulmonary syndrome					
	Herpes B virus infection					
	Glanders					
	Brucellosis					
	Venezuelan equine encephalitis					
	Hendra virus infection					
	Epidemic typhus					
Botulism						
Malaria			1		4	
Tularemia						
Lyme disease						
Lyssavirus infection(excluding rabies)						
Rift valley fever						
Melioidosis						
Legionellosis	4	5	6	4	72	
Leptospirosis					2	
Rocky mountain spotted fever						

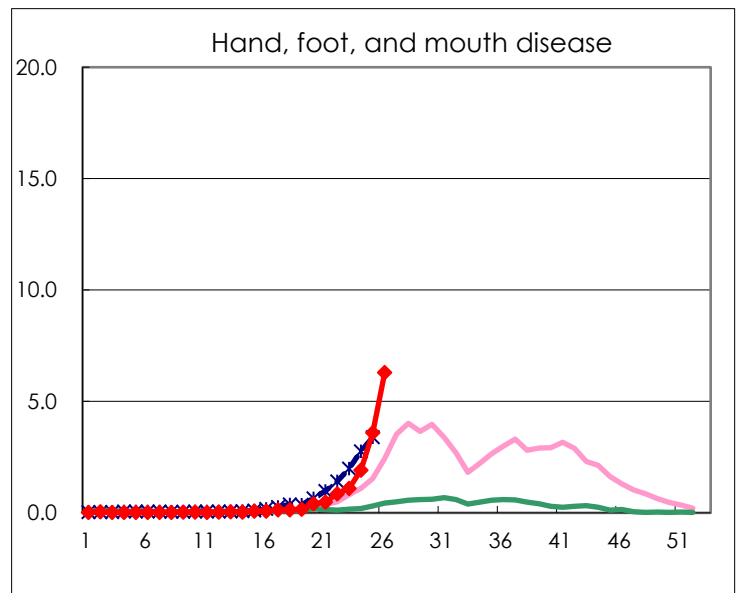
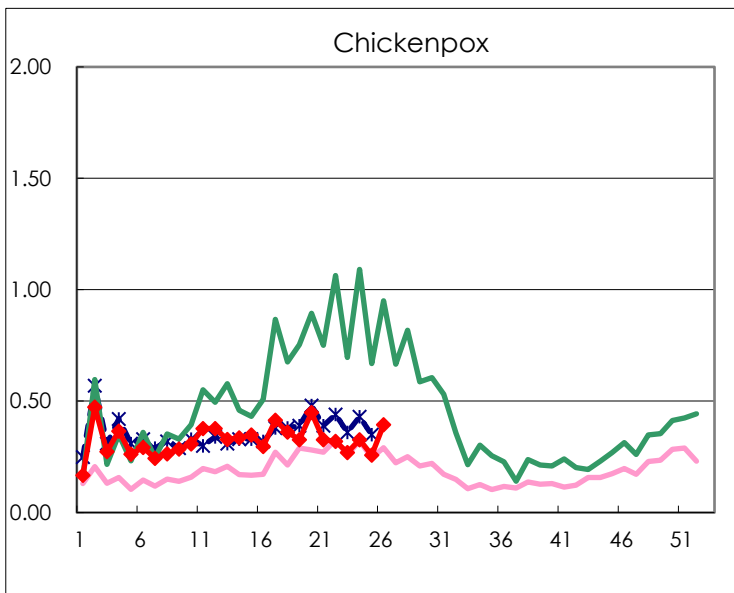
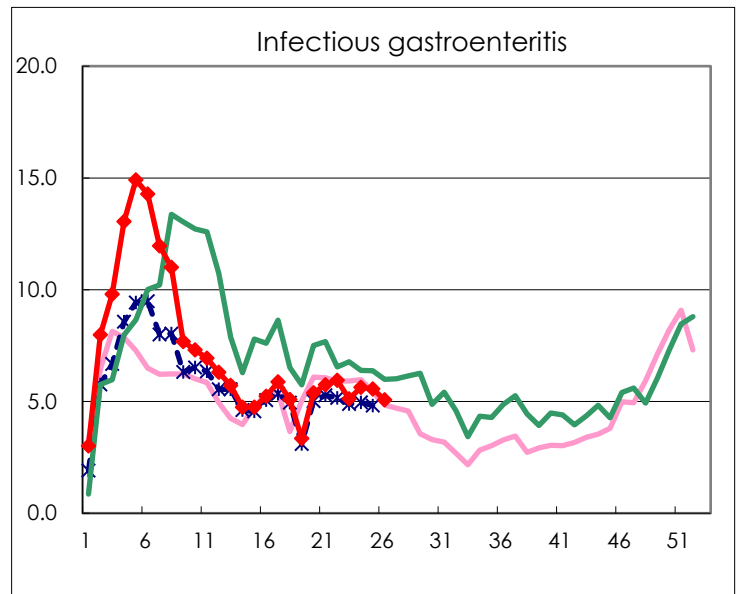
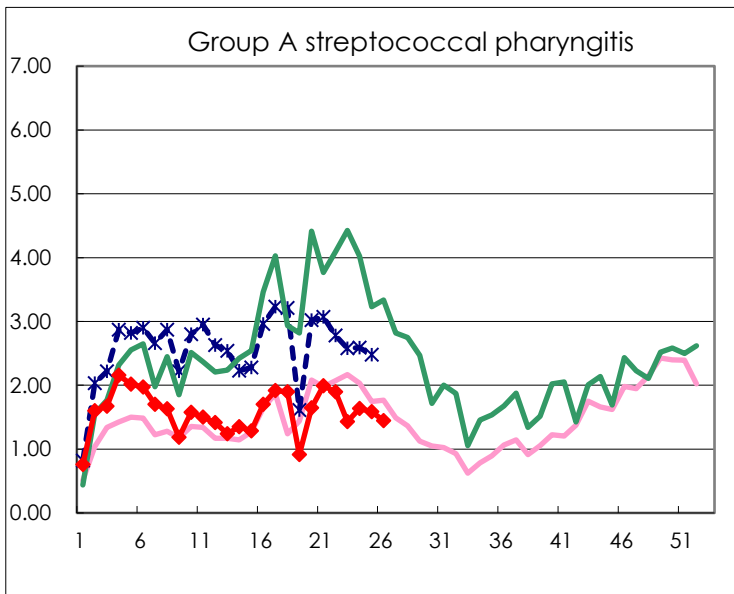
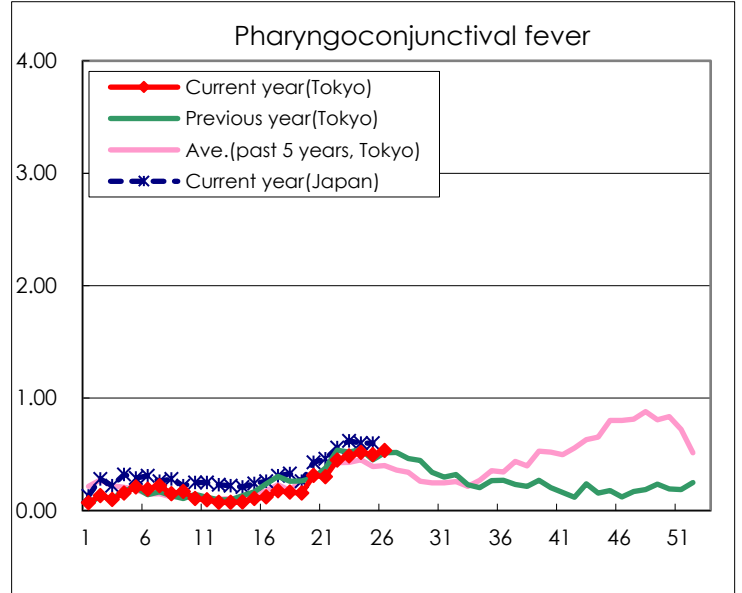
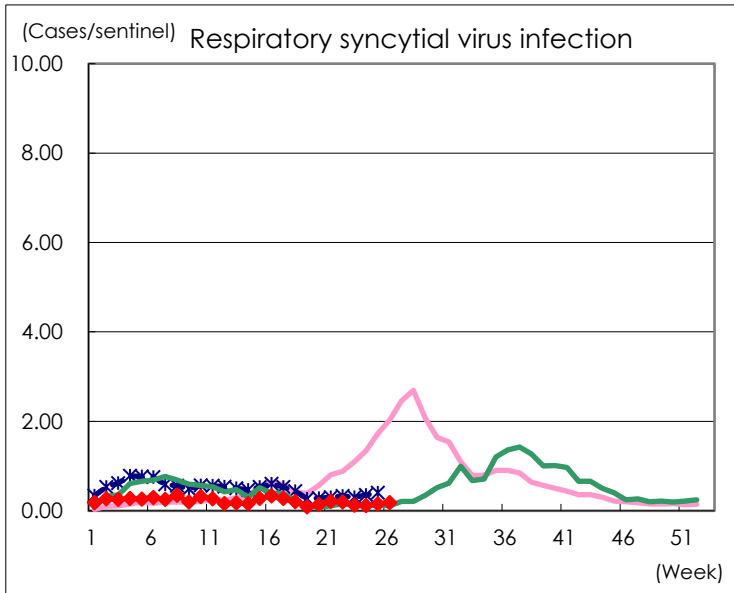
Category	Diseases	Tokyo				
		23rd	24th	25th	26th	Cum 2026
V	Amebiasis	1	3	1	2	50
	Viral hepatitis(excluding hepatitis A and E)	2	1	1	1	23
	CRE infection	1	2	4	5	63
	Acute Flaccid Paralysis (excluding Acute poliomyelitis)		1			6
	Acute encephalitis(excluding JE and WNE)	5		1	1	20
	Cryptosporidiosis					1
	Creutzfeldt-Jakob disease					8
	Severe invasive streptococcal infections(TSLS)	2	2	4	3	67
	Acquired immunodeficiency syndrome (AIDS)	4	6	7	4	136
	Giardiasis					7
	Invasive <i>Haemophilus influenzae</i> disease	2	1	3	1	43
	Invasive meningococcal disease		1	1		5
	Invasive pneumococcal disease	4	7	2	5	172
	Varicella (limited to hospitalized case)	4	3	5	3	62
	Congenital rubella syndrome					
	MDRP infection		1	1	1	14
	Syphilis	66	48	66	50	1,362
	Disseminated cryptococcosis			1		11
	Tetanus					4
	Vancomycin-resistant <i>S. aureus</i> infection					
	Vancomycin-resistant <i>Enterococcus</i> infection					5
	Pertussis	23	16	17	12	443
	Rubella					1
Measles			2	2	264	
MDRA infection		1		1	3	

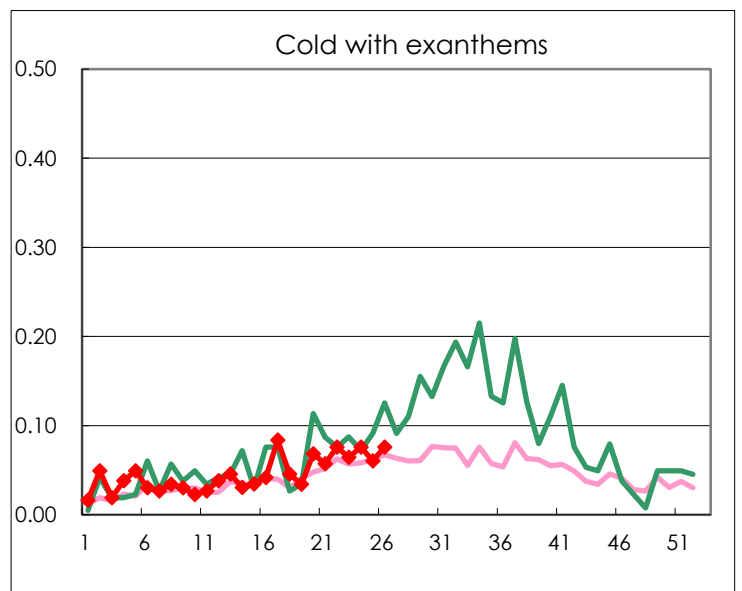
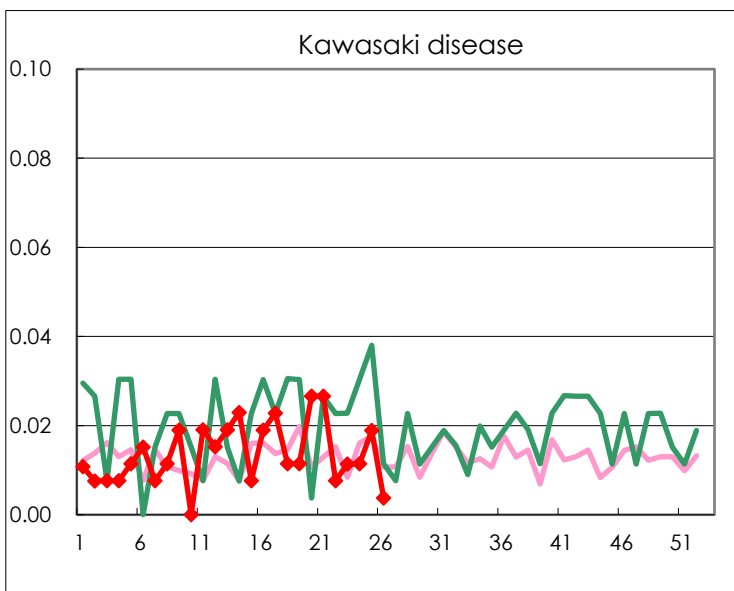
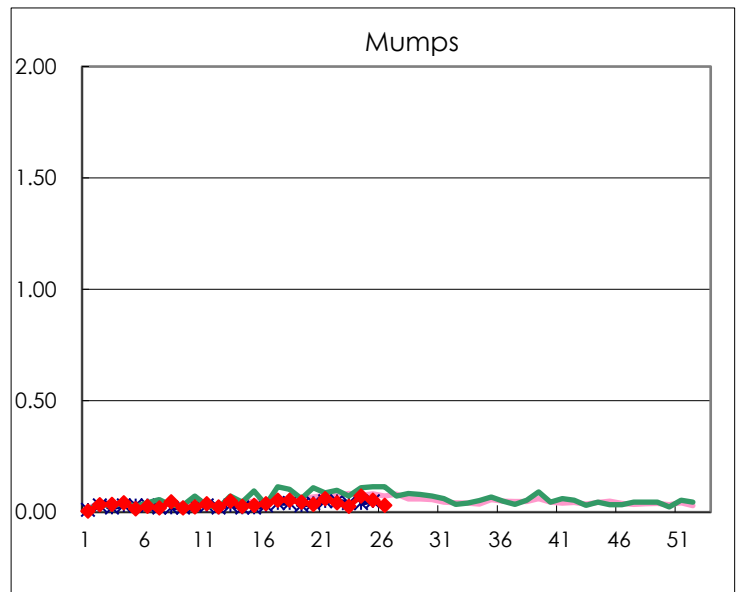
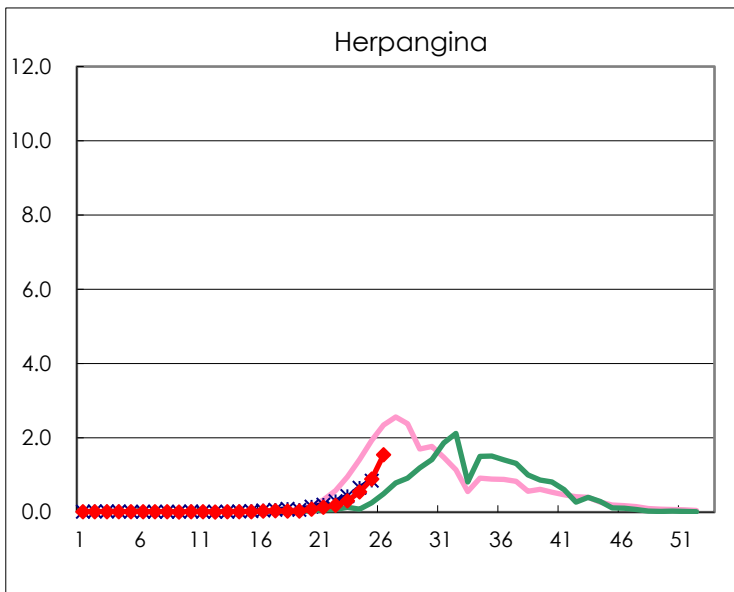
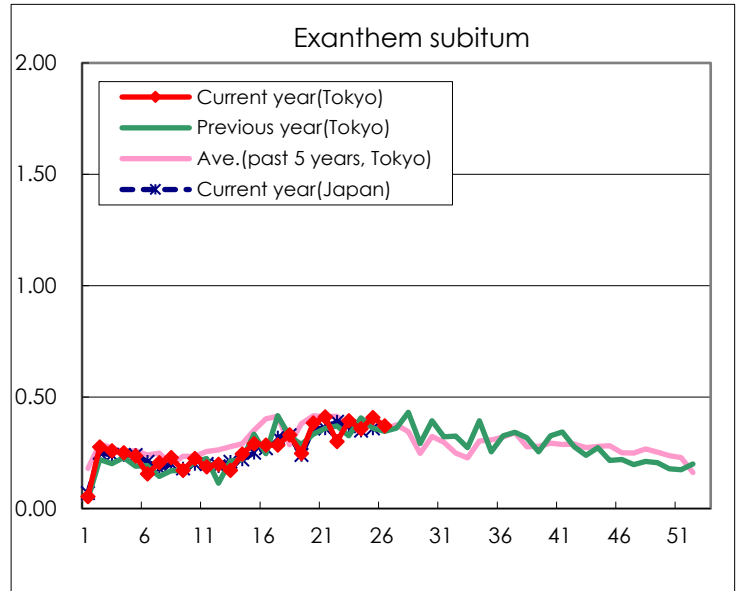
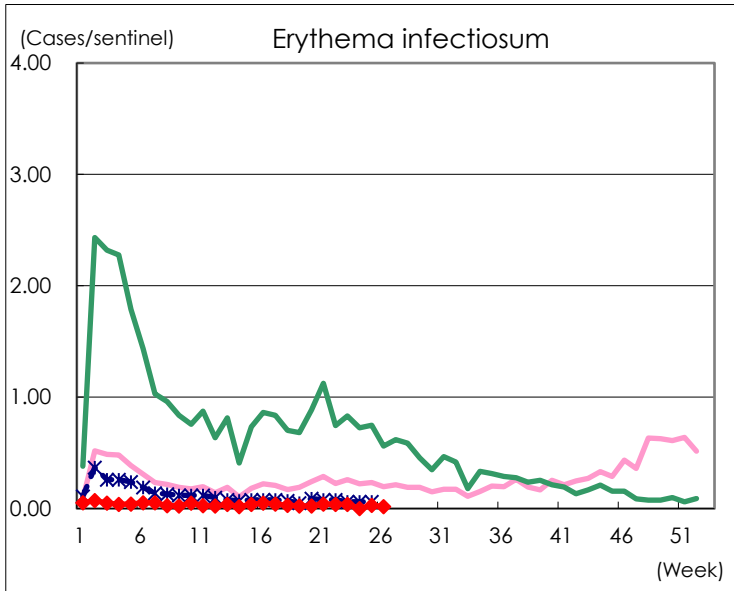
Number of patients with the diseases to be reported  
by the designated clinics and hospitals

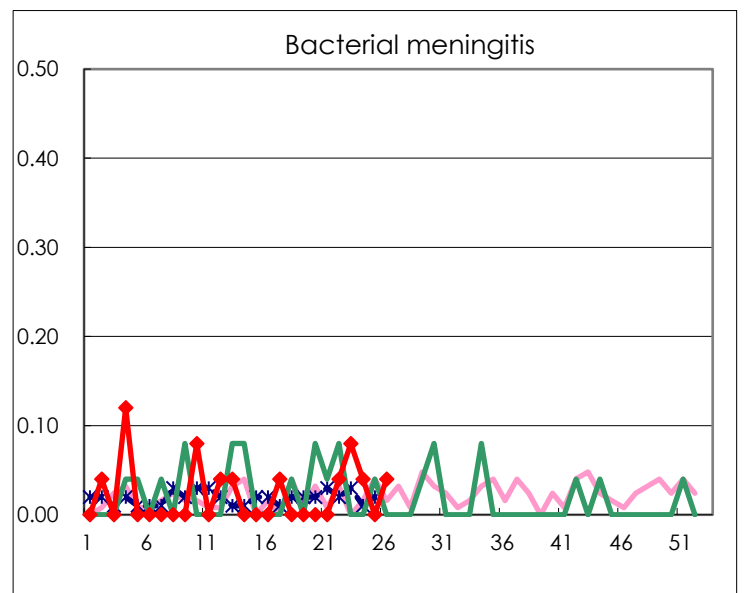
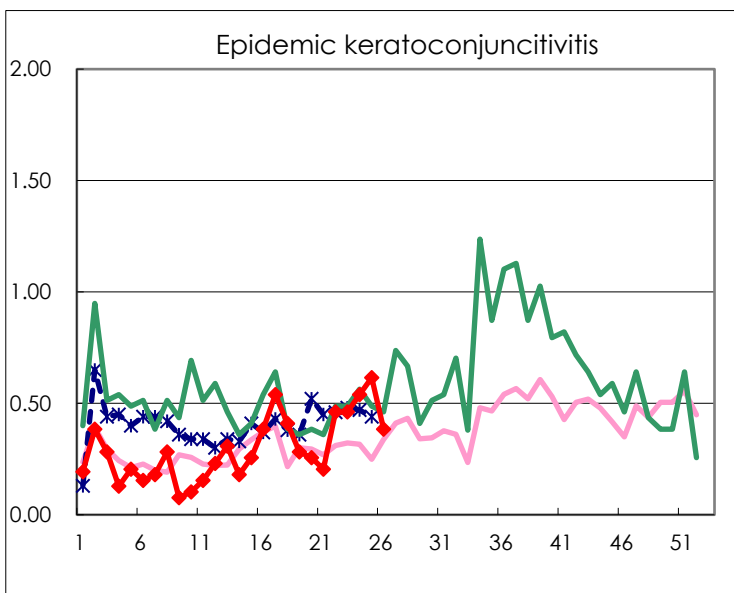
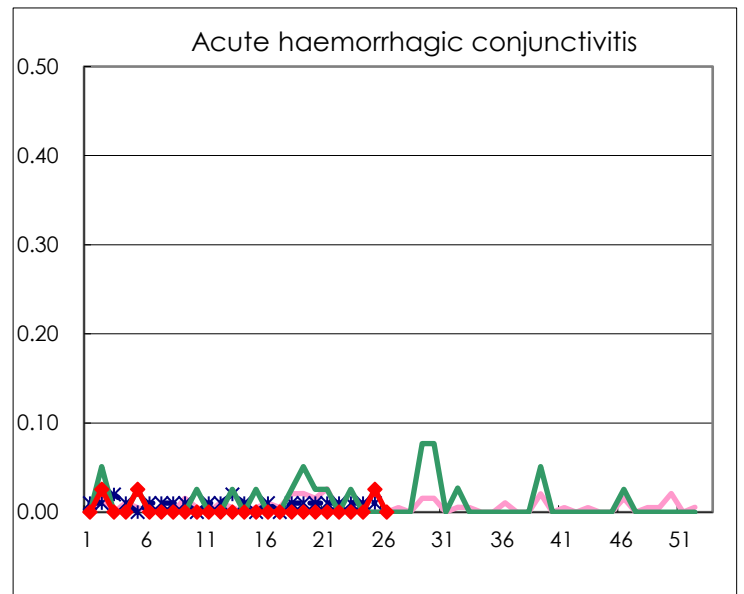
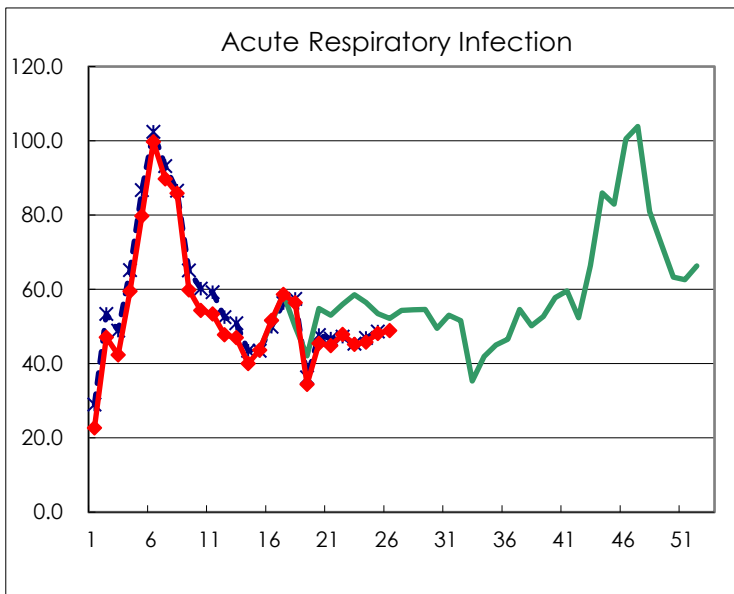
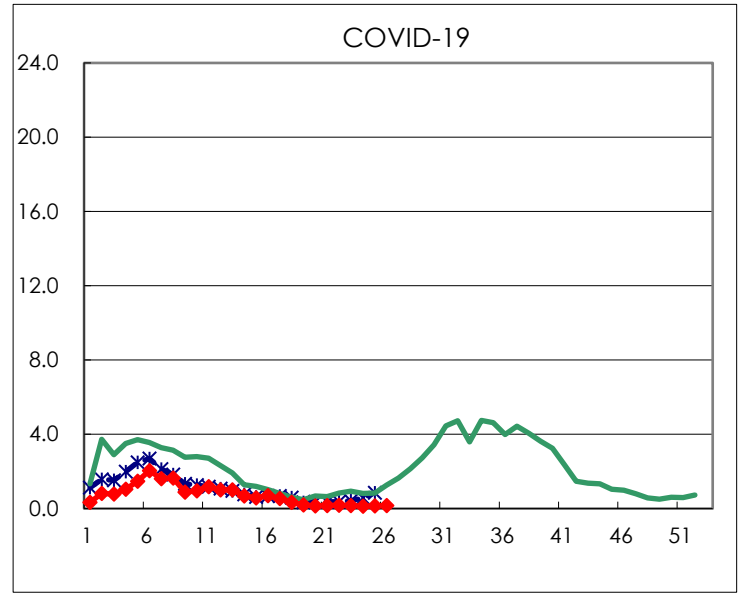
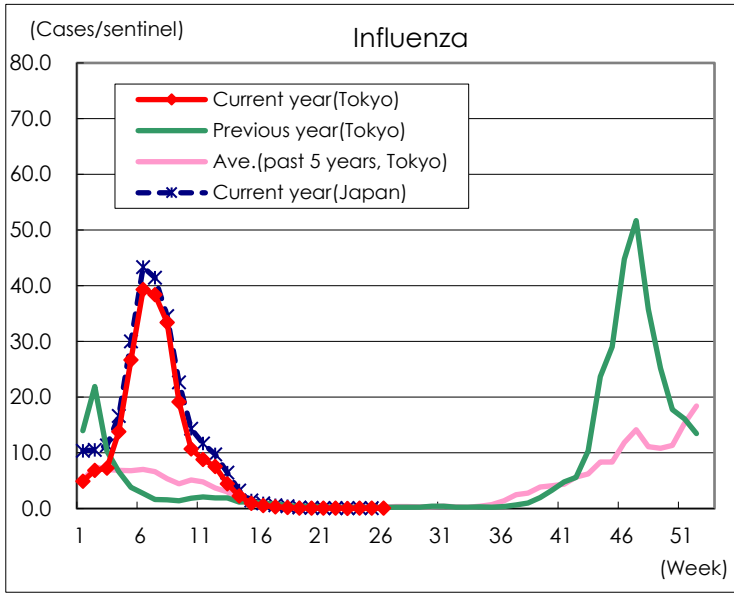
Diseases	Tokyo				
	23rd	24th	25th	26th	/sentinel
Respiratory syncytial virus infection	33	31	41	48	0.18
Pharyngoconjunctival fever	128	136	131	141	0.53
Group A streptococcal pharyngitis	378	430	419	382	1.45
Infectious gastroenteritis	1,352	1,481	1,468	1,339	5.07
Chickenpox	71	86	68	104	0.39
Hand, foot, and mouth disease	291	504	951	1,664	6.30
Erythema infectiosum	10		8	5	0.02
Exanthem subitum	104	94	108	98	0.37
Herpangina	80	144	235	409	1.55
Mumps	7	19	14	8	0.03
Kawasaki disease	3	3	5	1	0.00
Cold with exanthems	17	20	16	20	0.08
Influenza	14	25	24	23	0.06
COVID-19	66	54	57	67	0.16
Acute Respiratory Infection	18,943	19,155	20,121	20,431	48.88
Acute hemorrhagic conjunctivitis			1		
Epidemic keratoconjunctivitis	18	21	24	15	0.38
Bacterial meningitis	2	1		1	0.04
Aseptic meningitis	3			3	0.12
Mycoplasma pneumonia	4	4	3	2	0.08
Chlamydial pneumonia (excluding psittacosis)	1				
Infectious gastroenteritis (only by Rotavirus)		3	1	1	0.04
Influenza-Associated Hospitalizations					
COVID-19-Associated Hospitalizations	10	6	8	10	0.40

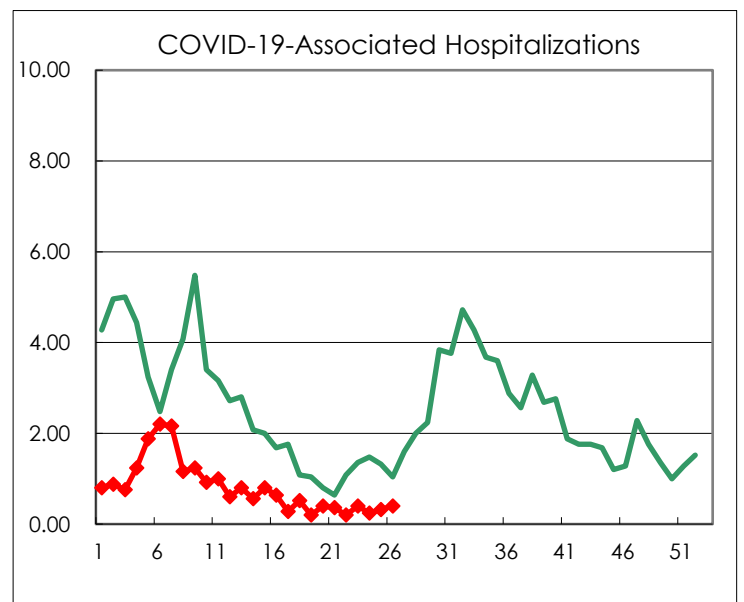
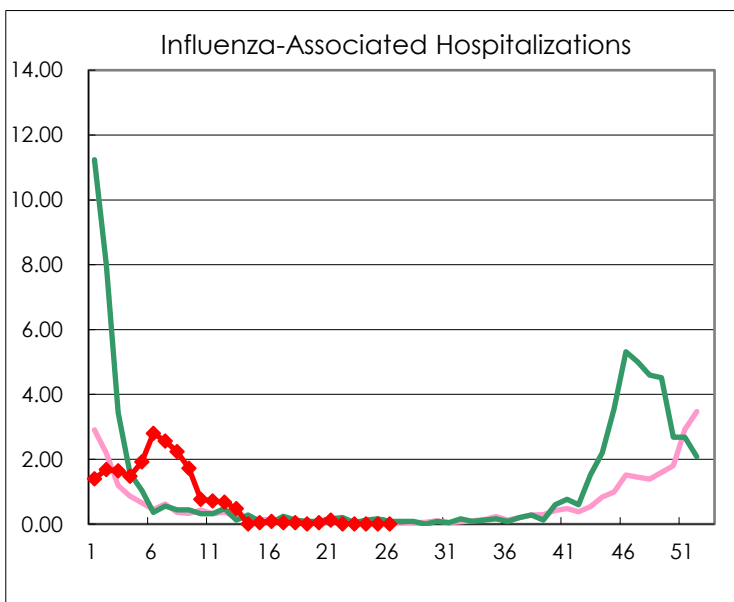
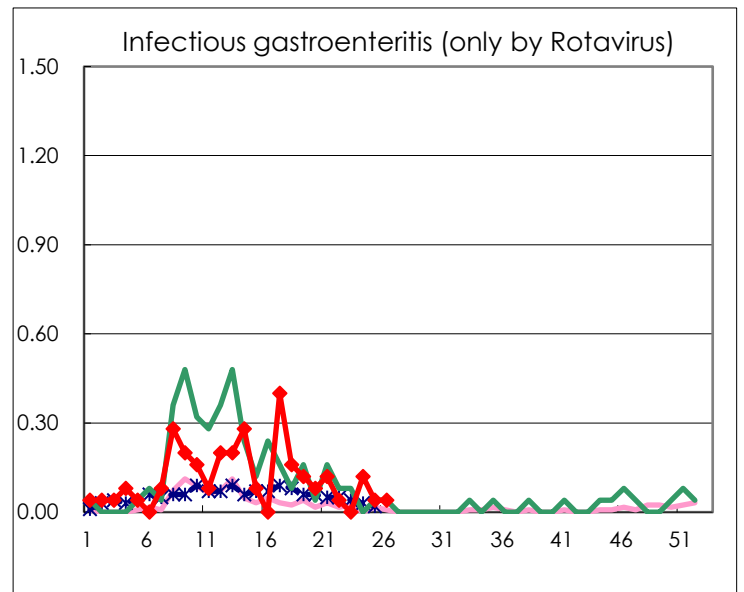
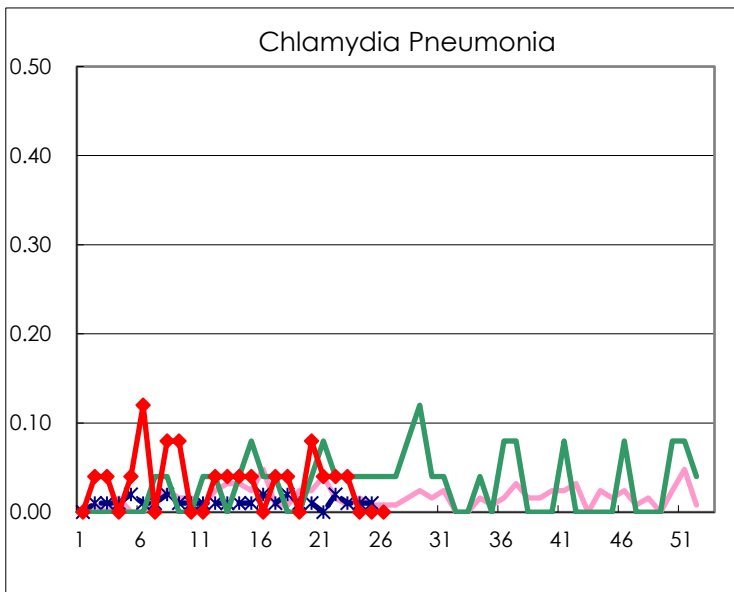
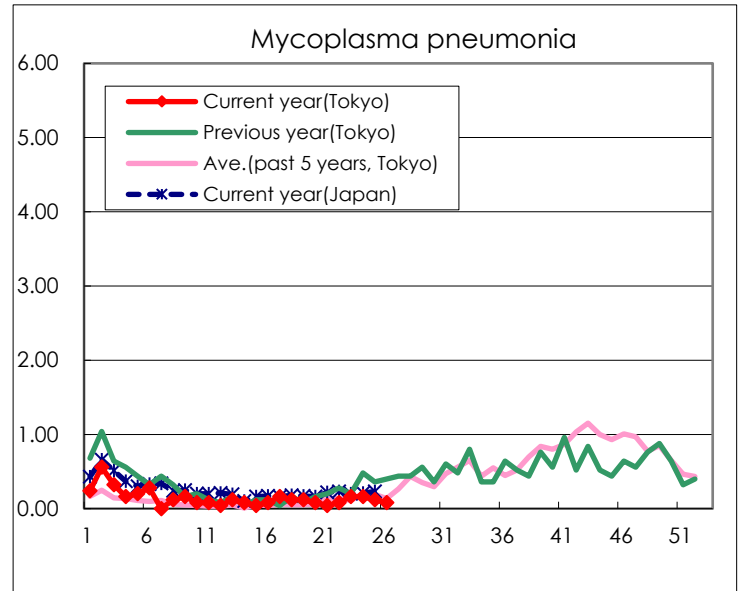
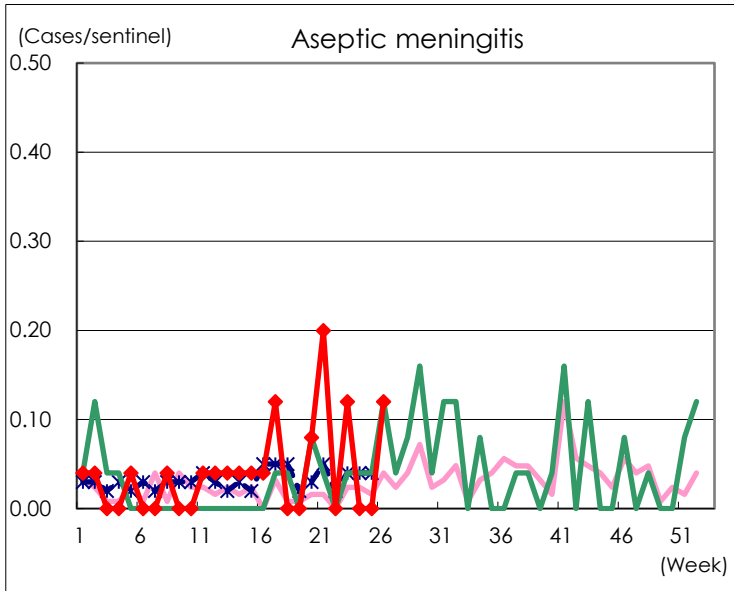
(Blank means 0.)

# Disease Trend Graph (weekly reported cases per sentinel in comparison)









Number of sentinel facilities for weekly reporting		
Types of sentinels	Number of sentinels	Sentinels having reported
Pediatric	264	264
Acute Respiratory Infection	419	418
Ophthalmic	39	39
Specially- designated	25	25